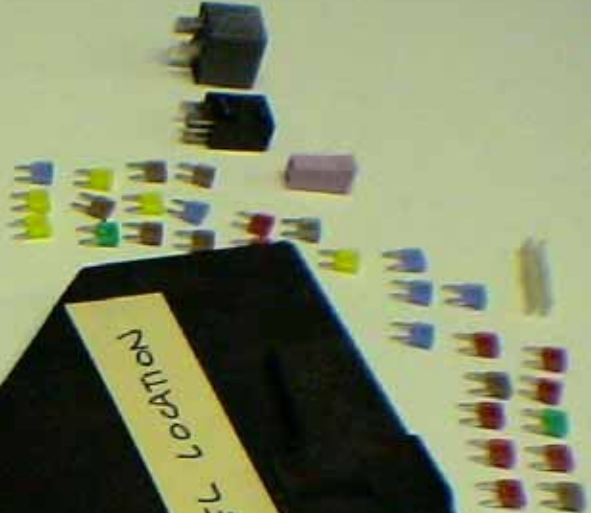
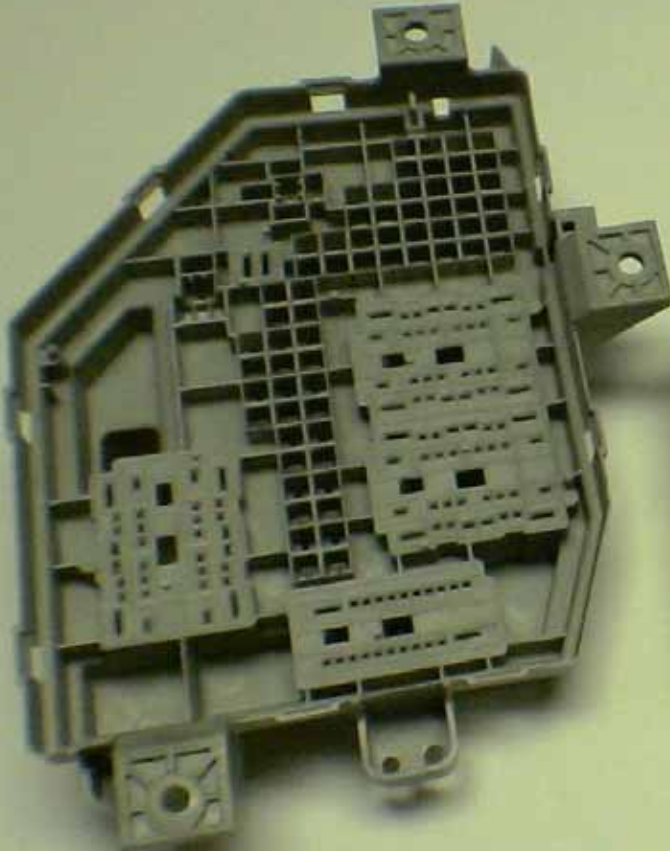
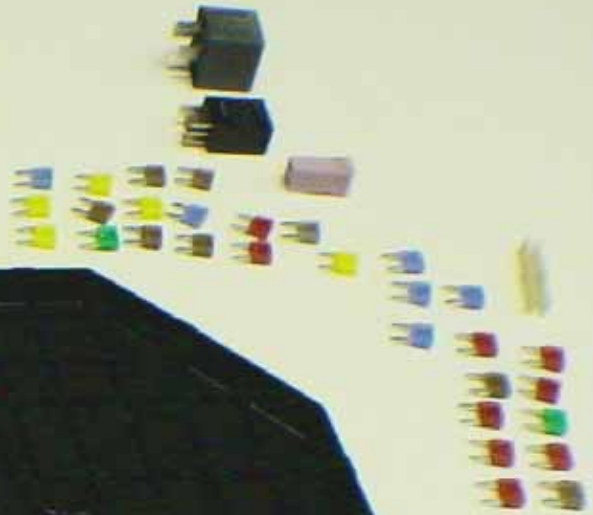
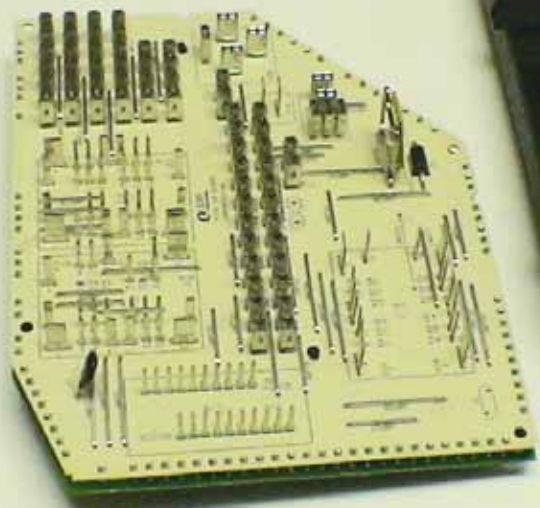
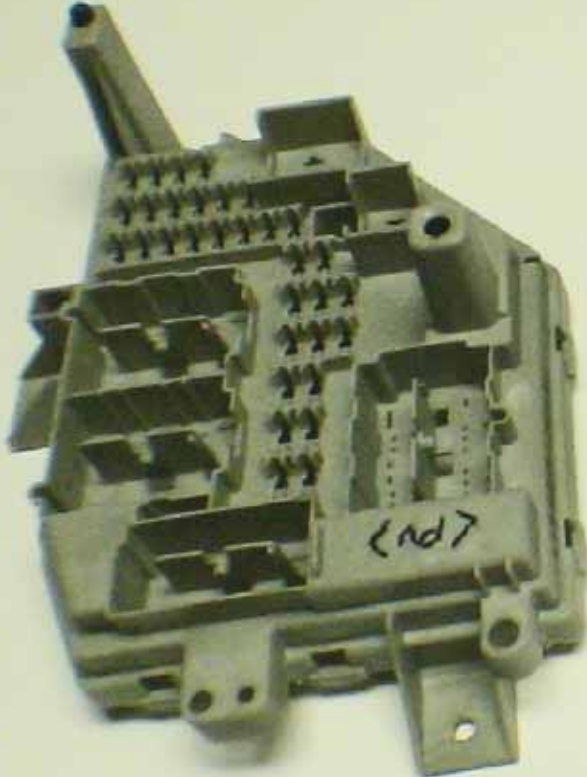


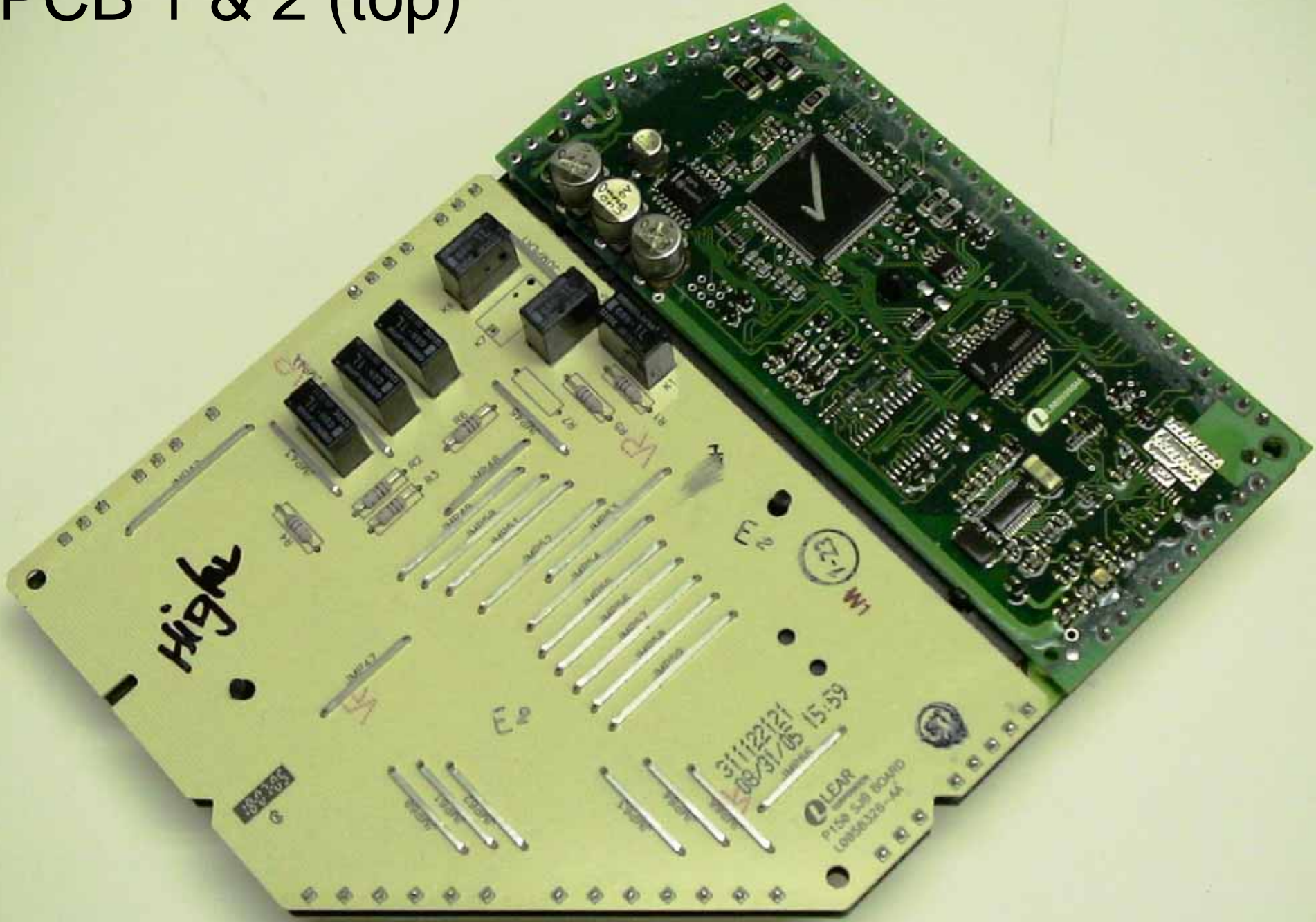
# DUT Apart (top)

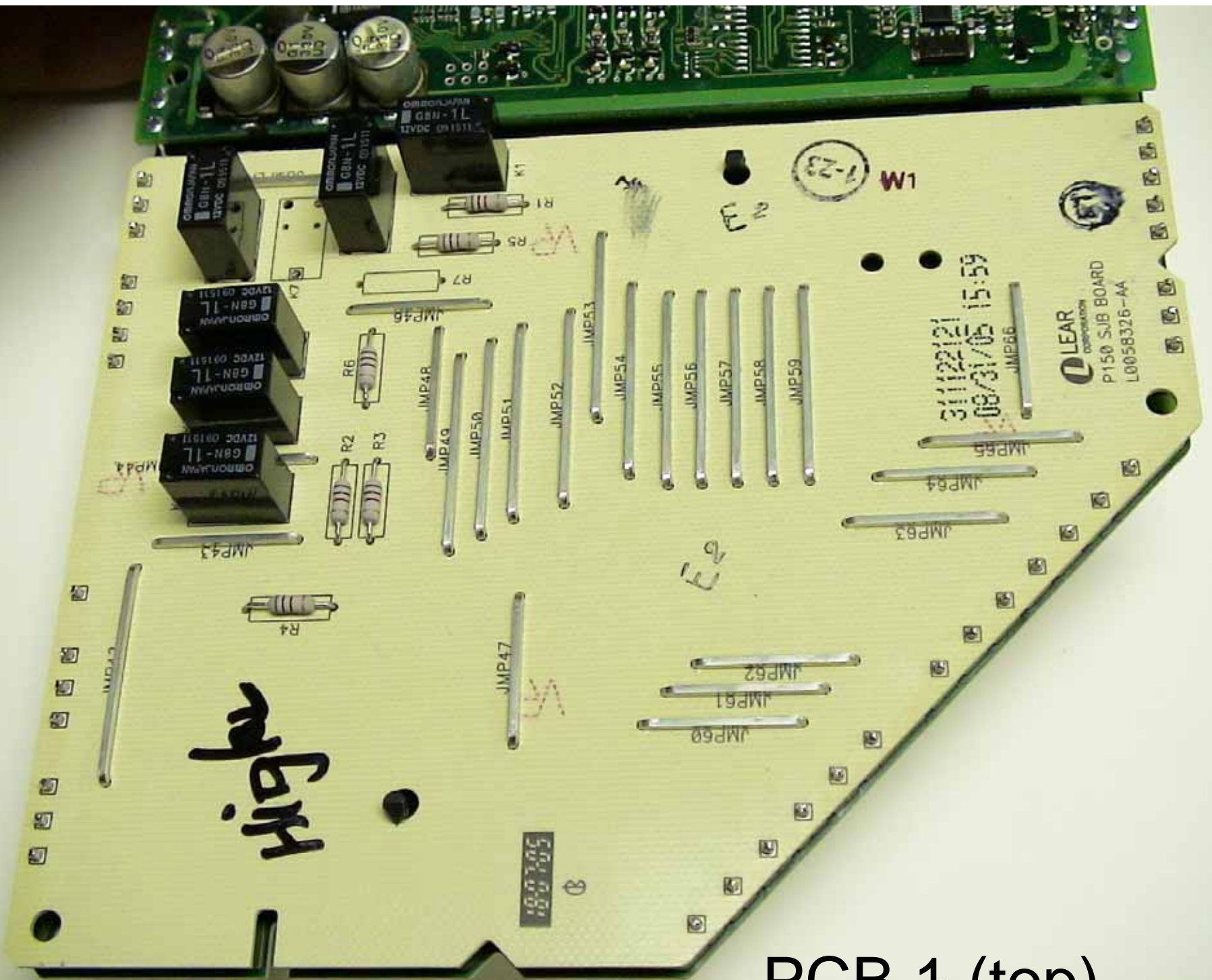


# DUT Apart (bottom)



# PCB 1 & 2 (top)





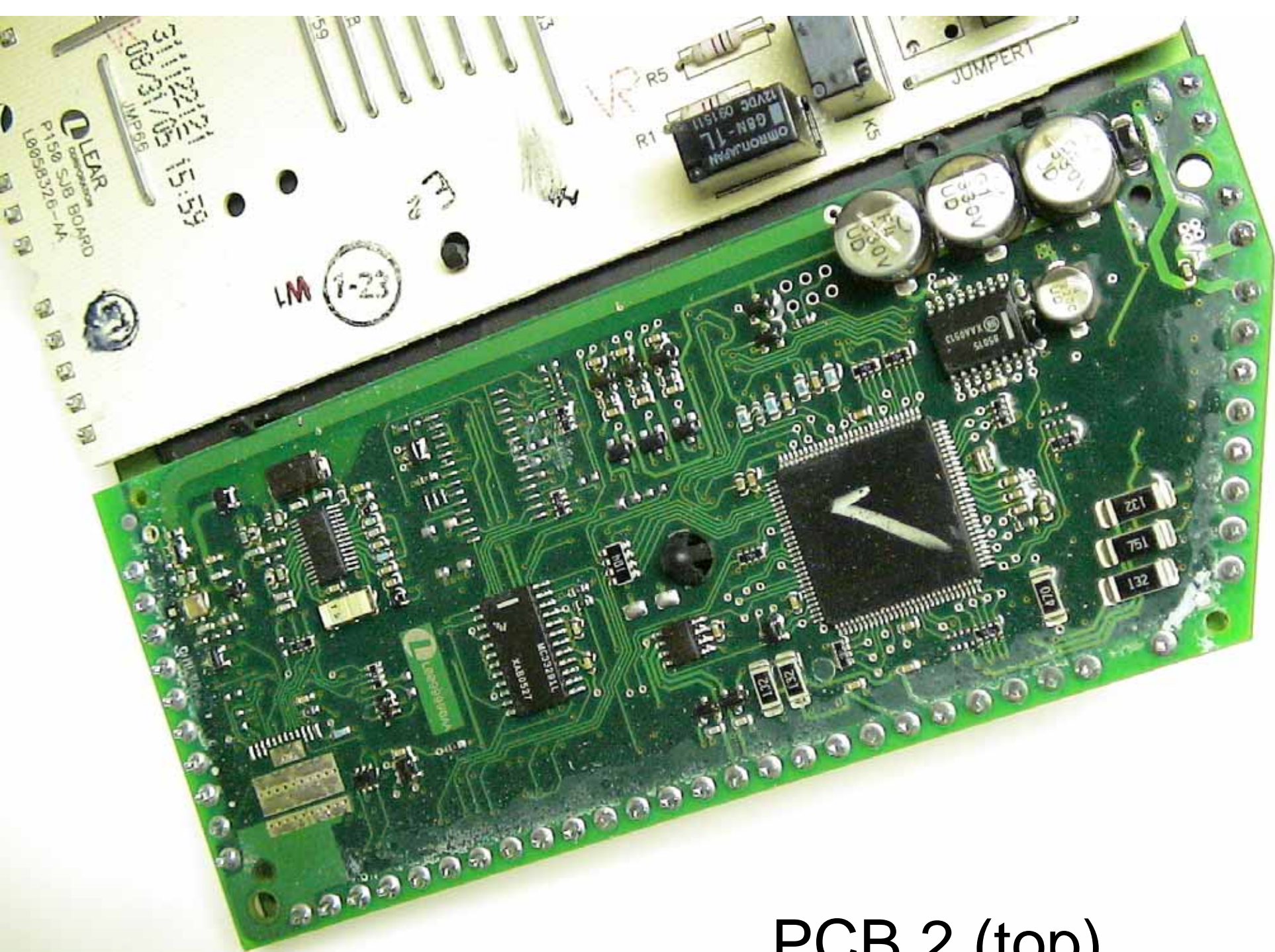
Higher

3/11/22/21  
09/31/05 15:59

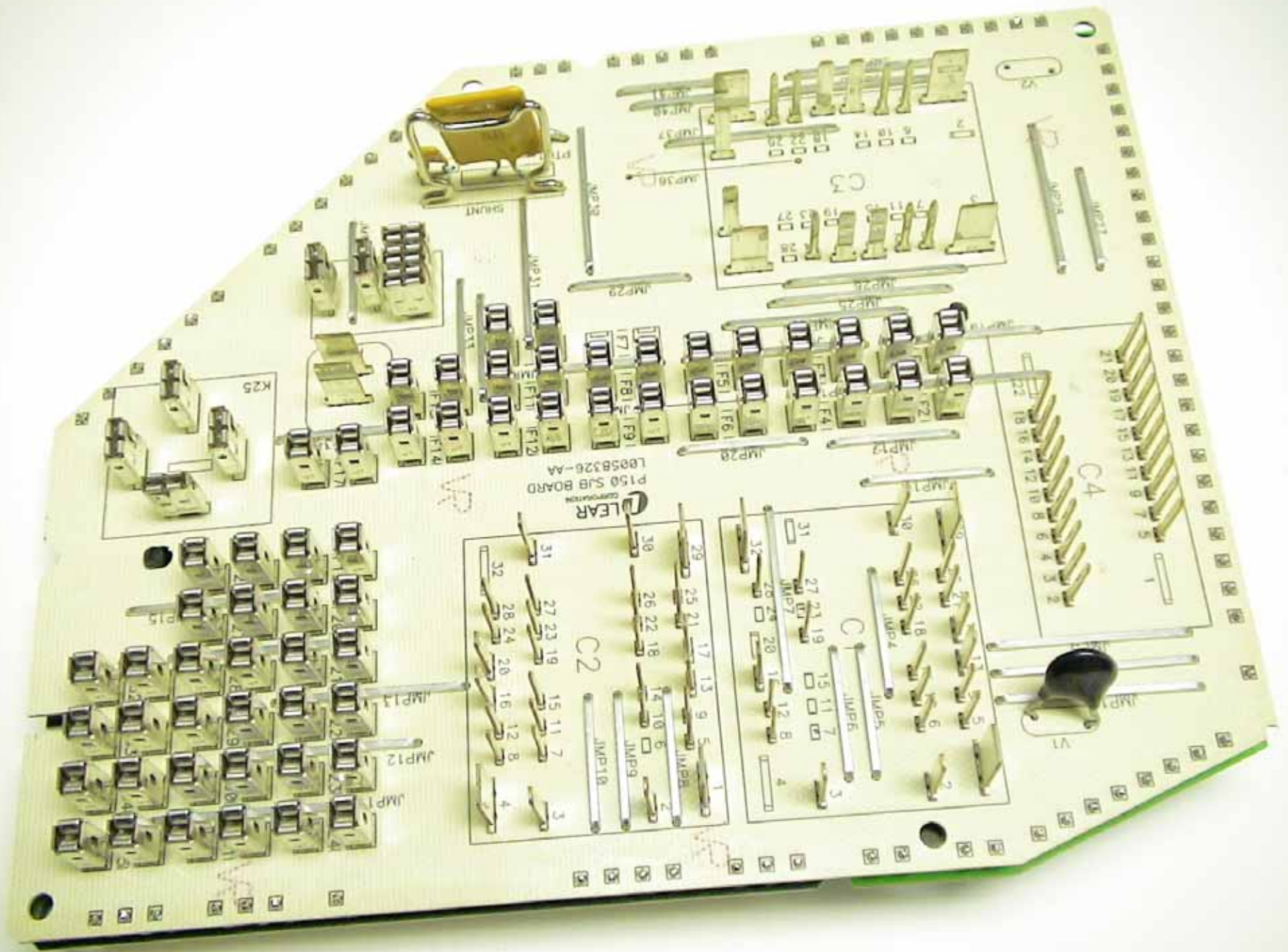
1-23  
LM

LEAR CORPORATION  
P150 SUB BOARD  
L0058326-AA

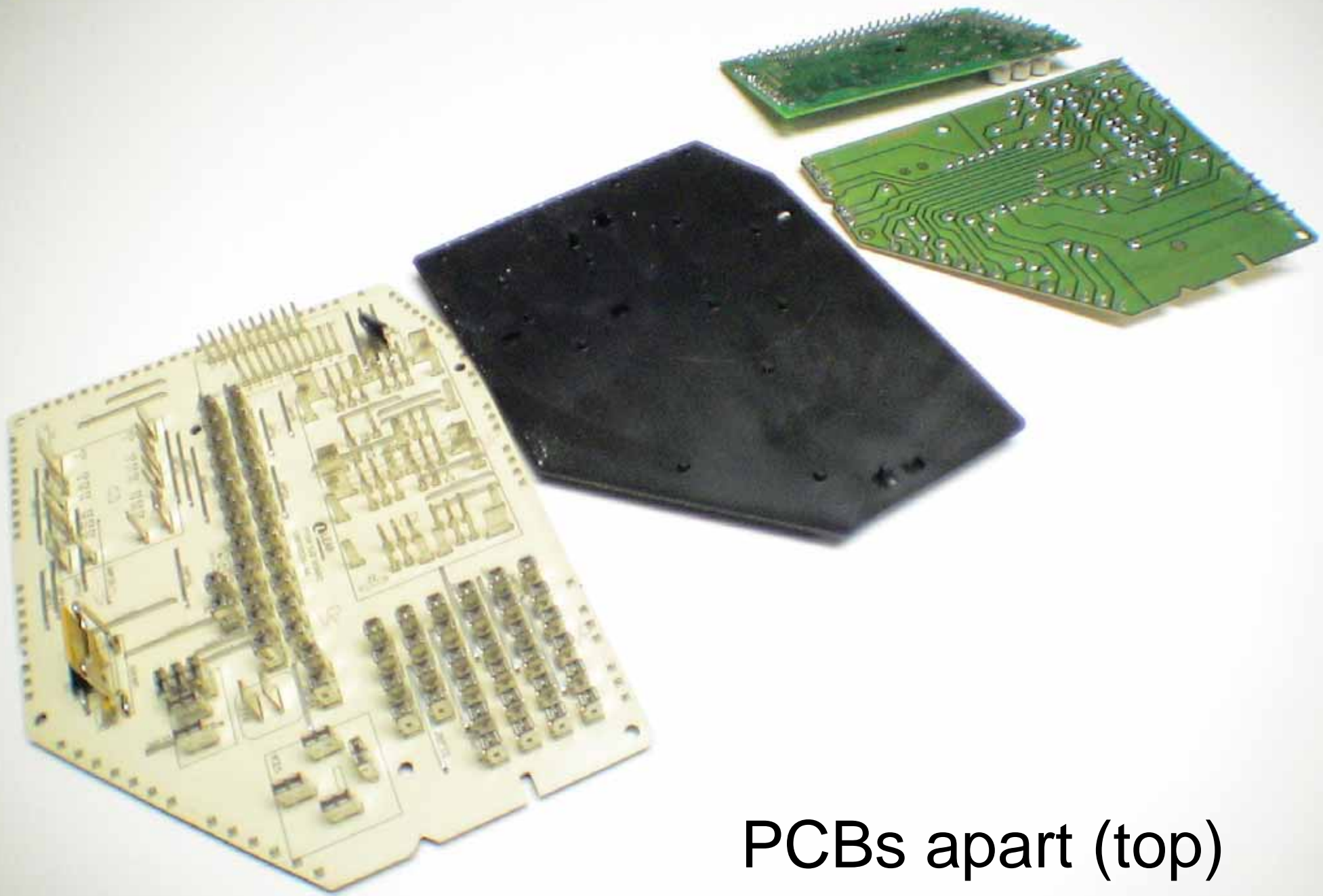
PCB 1 (top)



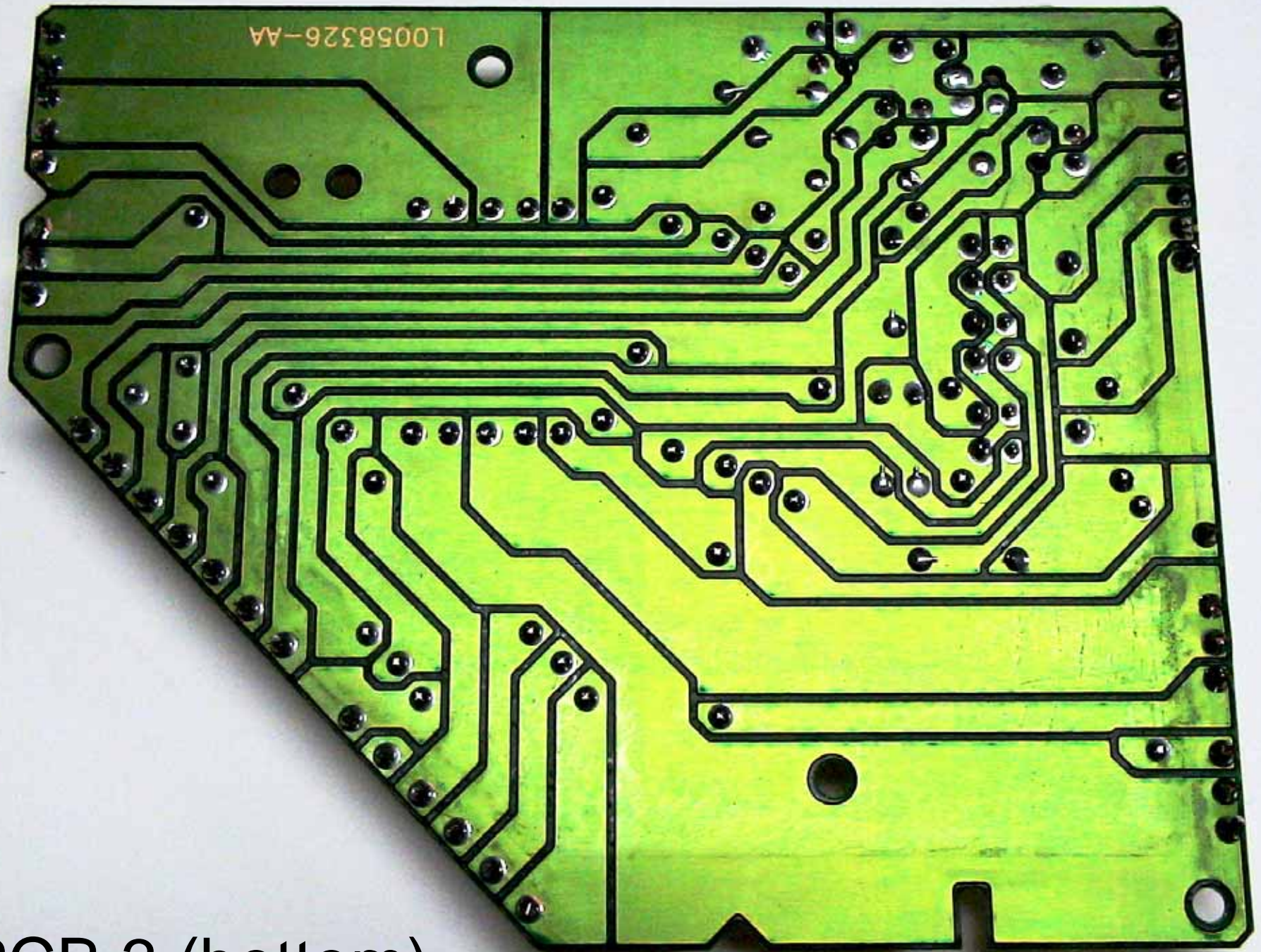
PCB 2 (top)



PCB 3 (top)

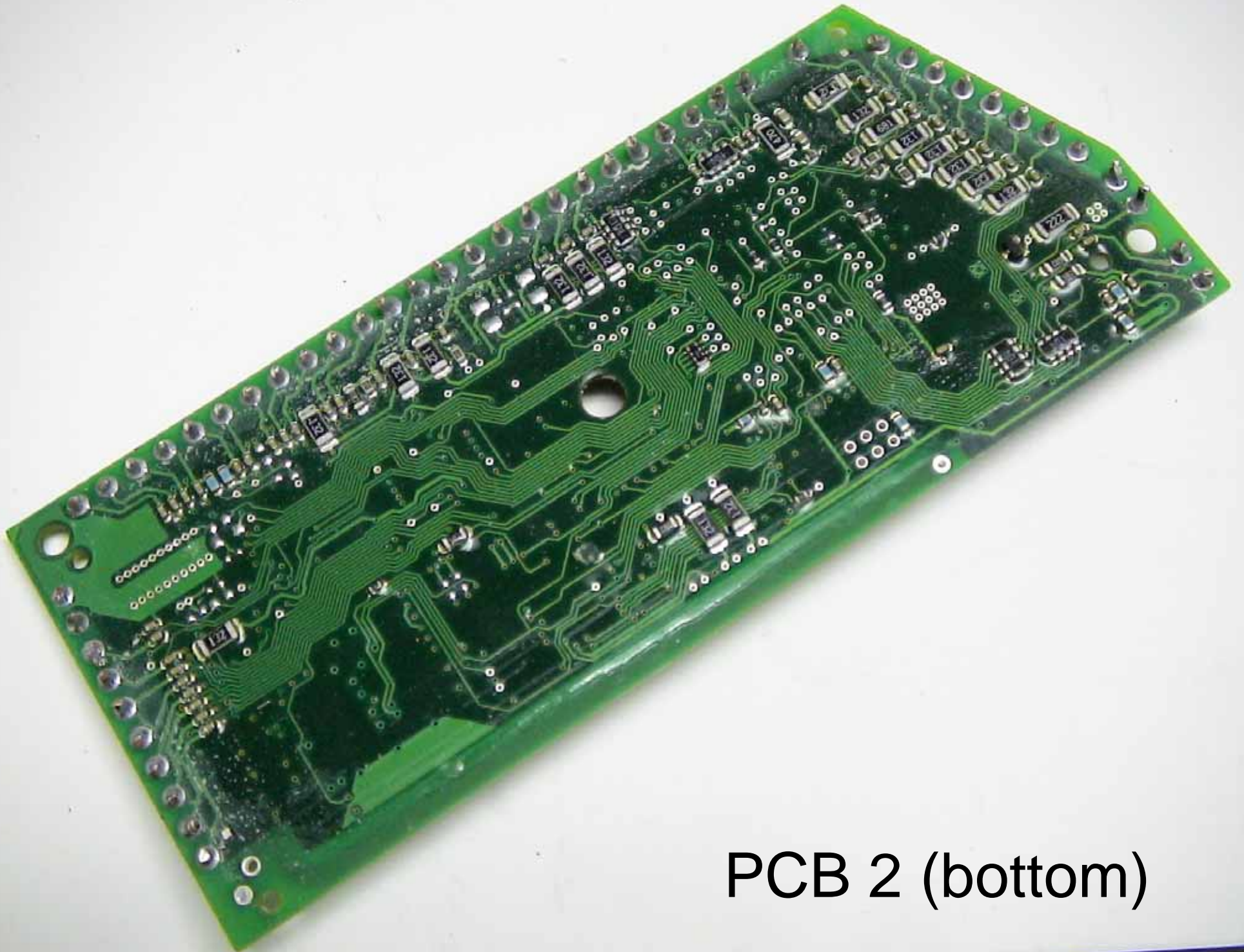


PCBs apart (top)

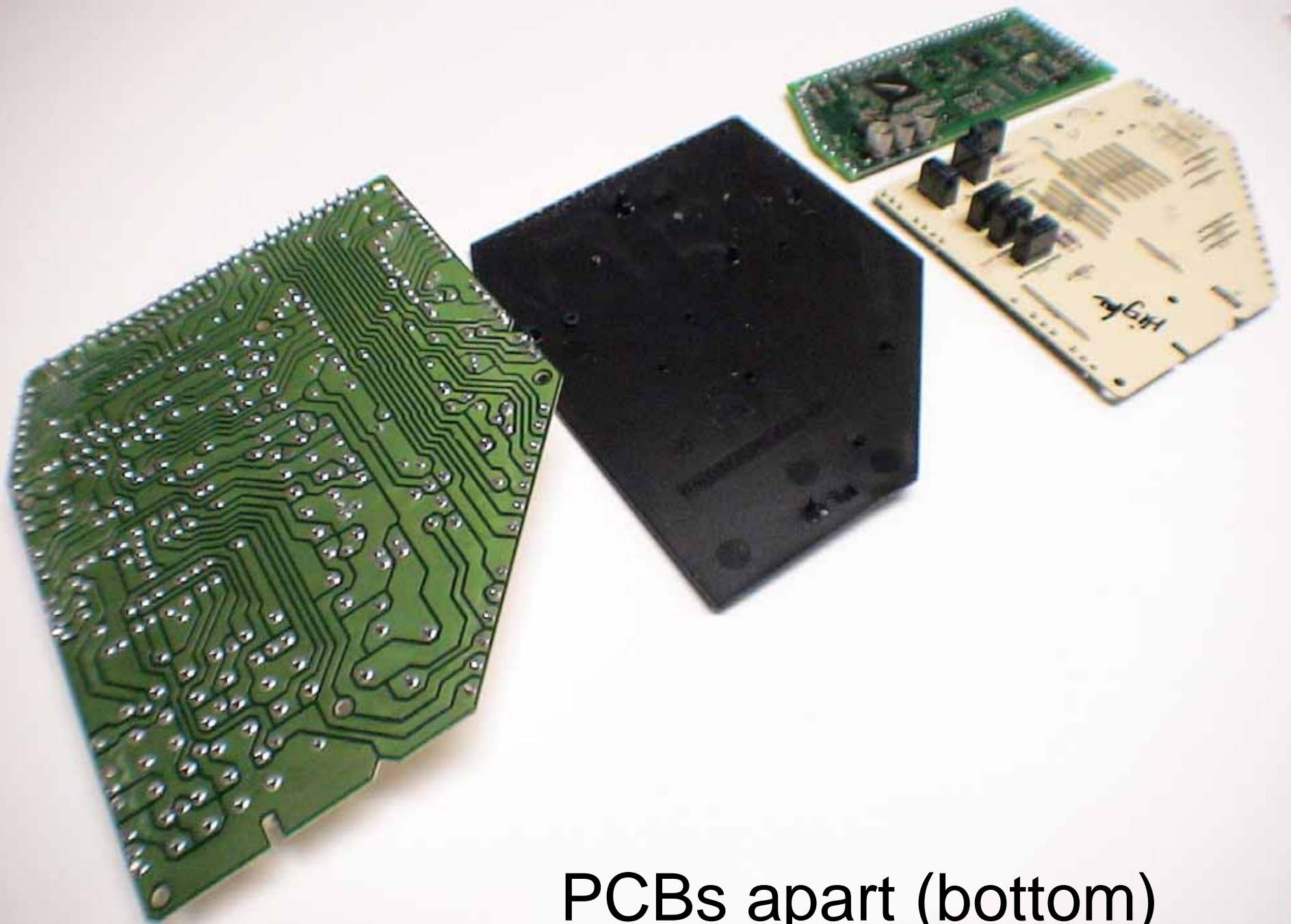


PCB 3 (bottom)

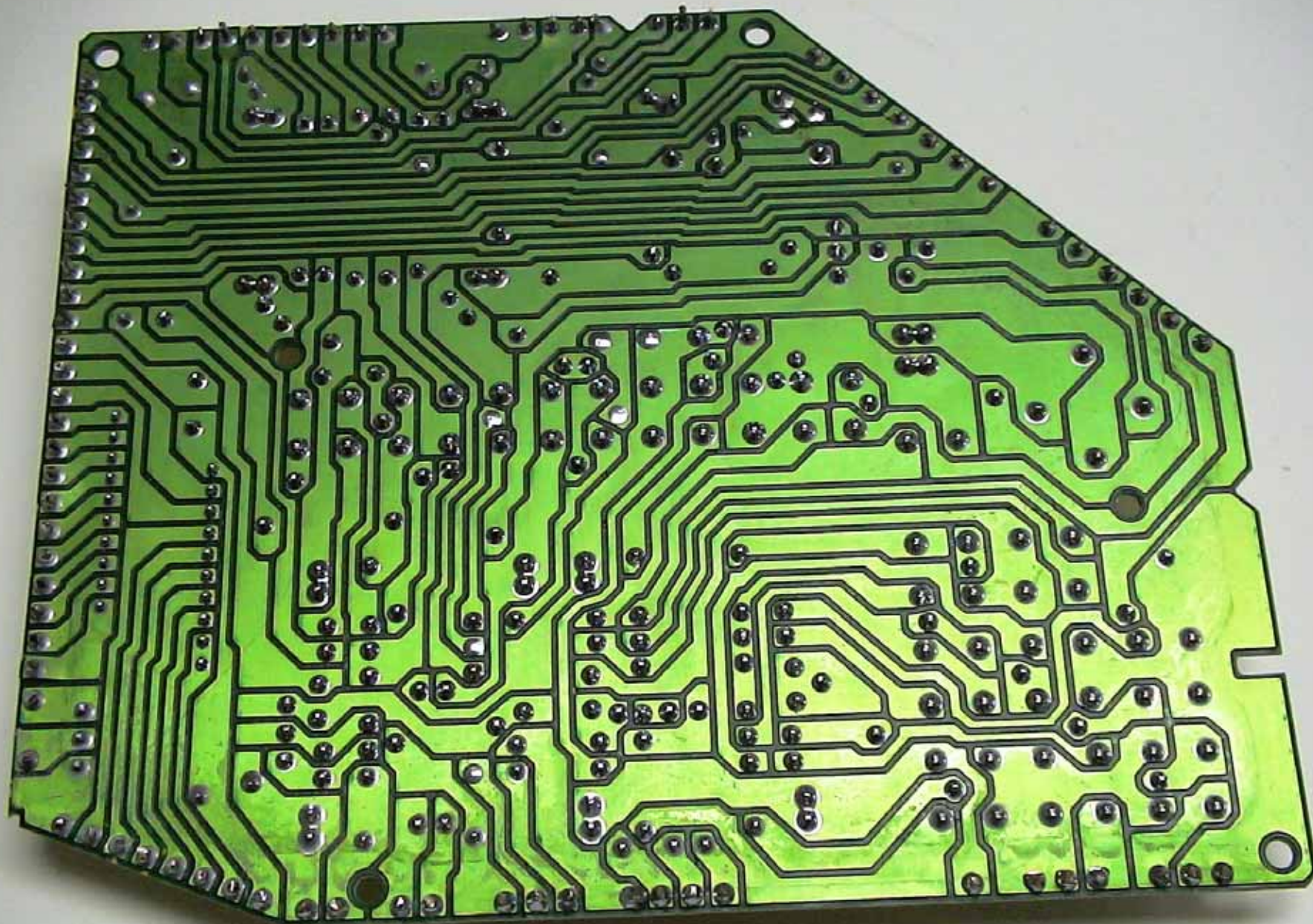




PCB 2 (bottom)

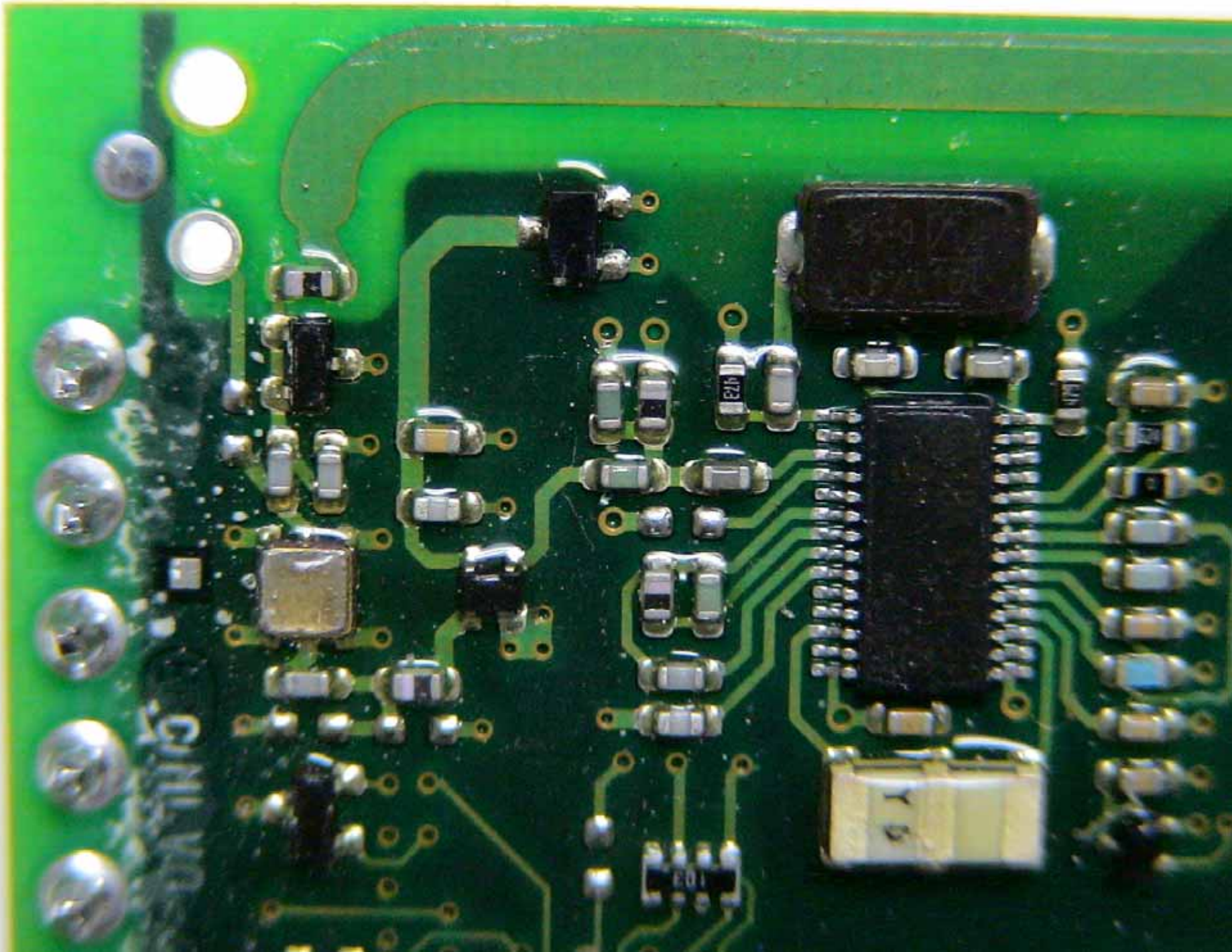


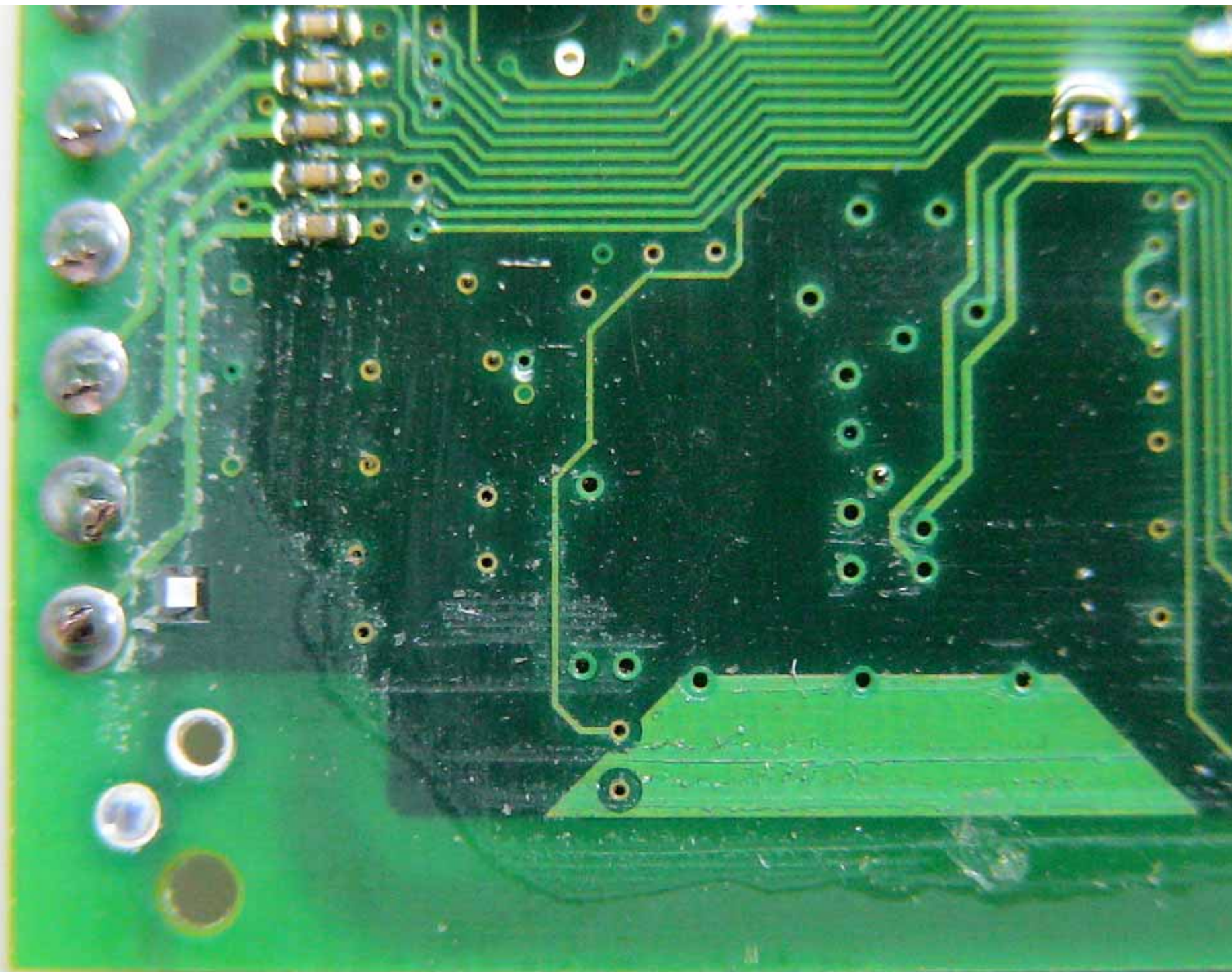
PCBs apart (bottom)



PCB 1 (bottom)

# RF section, PCB 2 (top)





RF section, PCB 2 (bottom)