



FreeWave
CRAIUS

Connect only to a NEC Class 2 Circuit. For Hazardous Locations: Class 1, Division 2, Groups A, B, C, & D.

RS232 RS485

Model #: LRS400S-C1-U

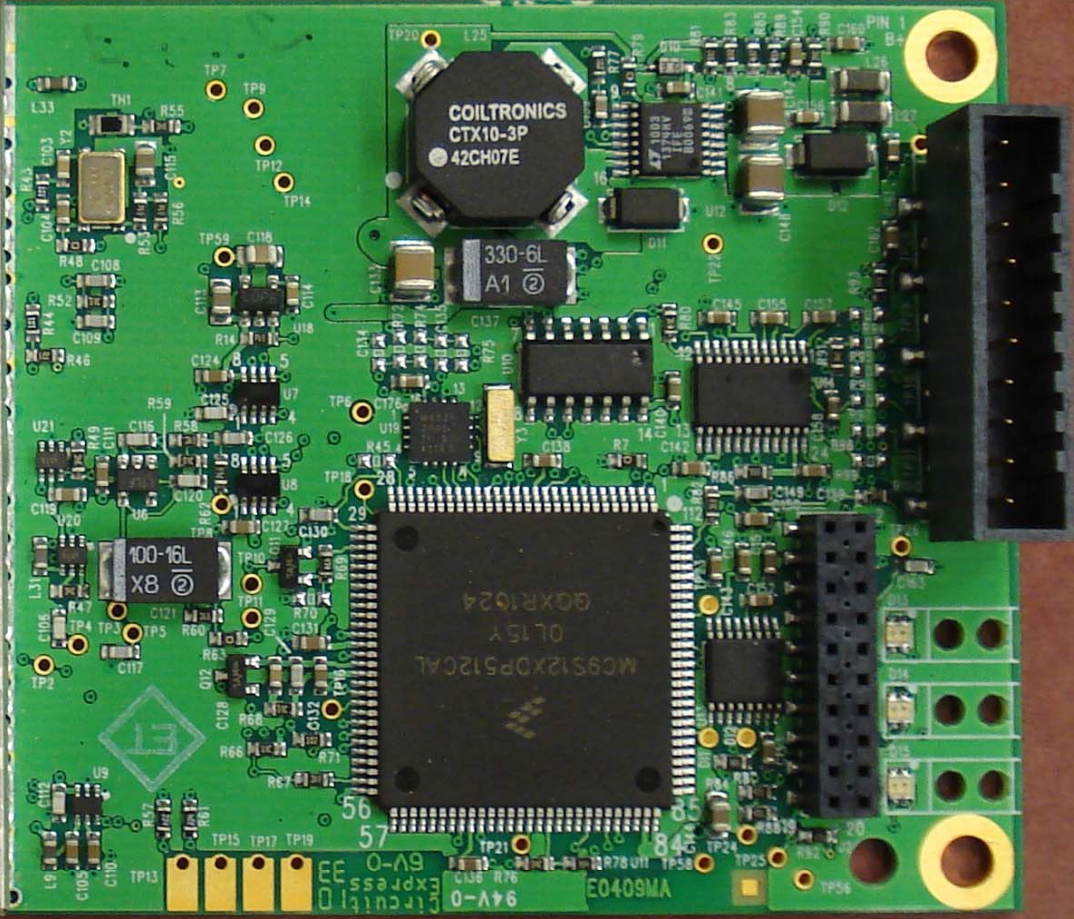
Serial #: 455-3668

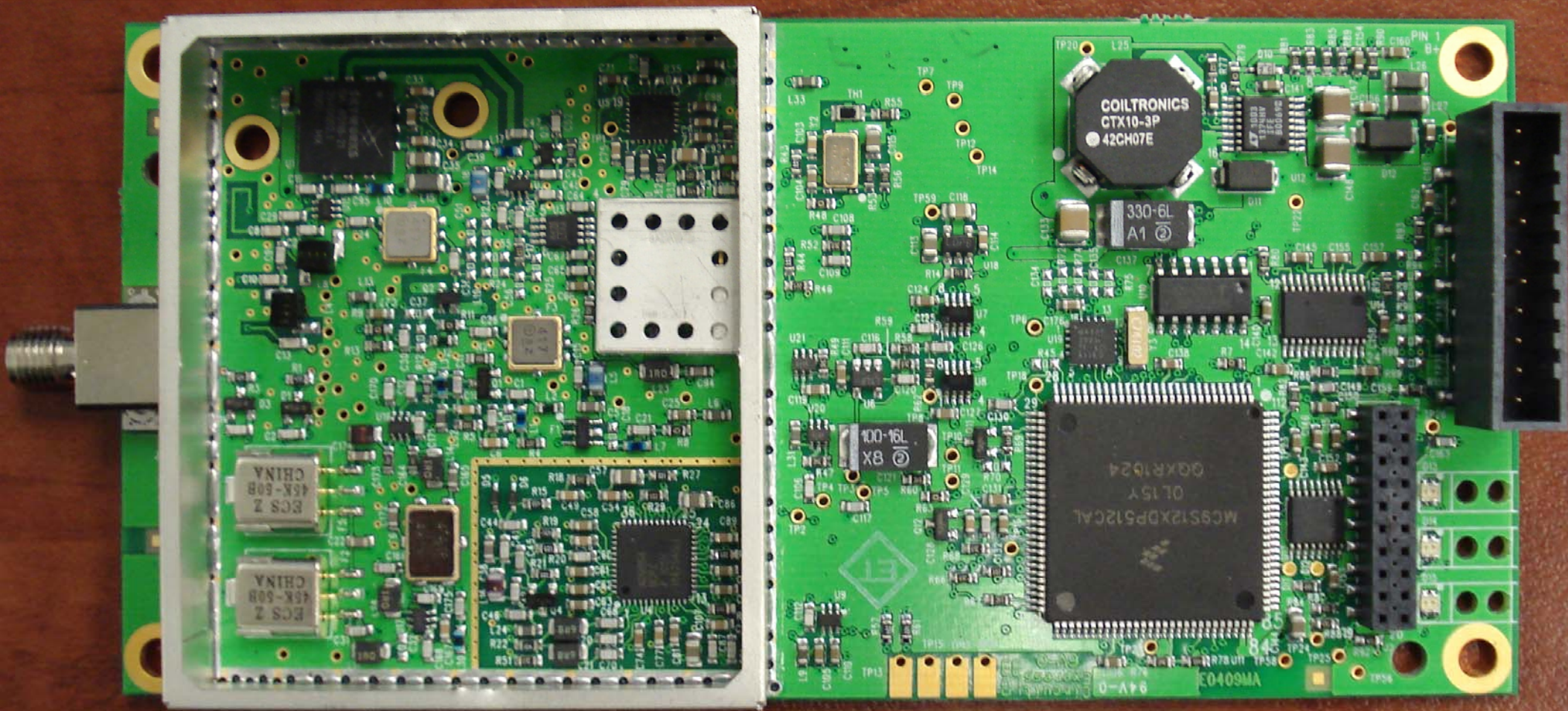
FCC ID: KNY-1293514195135

Canada: 2329B-LRS400

FreeWave Technologies, Inc. Boulder, CO 80301.

This device complies with Part 15 of the FCC Rules. Operation is subject to the following two conditions: 1) This device may not cause harmful interference, and 2) this device must accept any interference received, including interference that may cause undesired operation.







455-3668
E4L1C