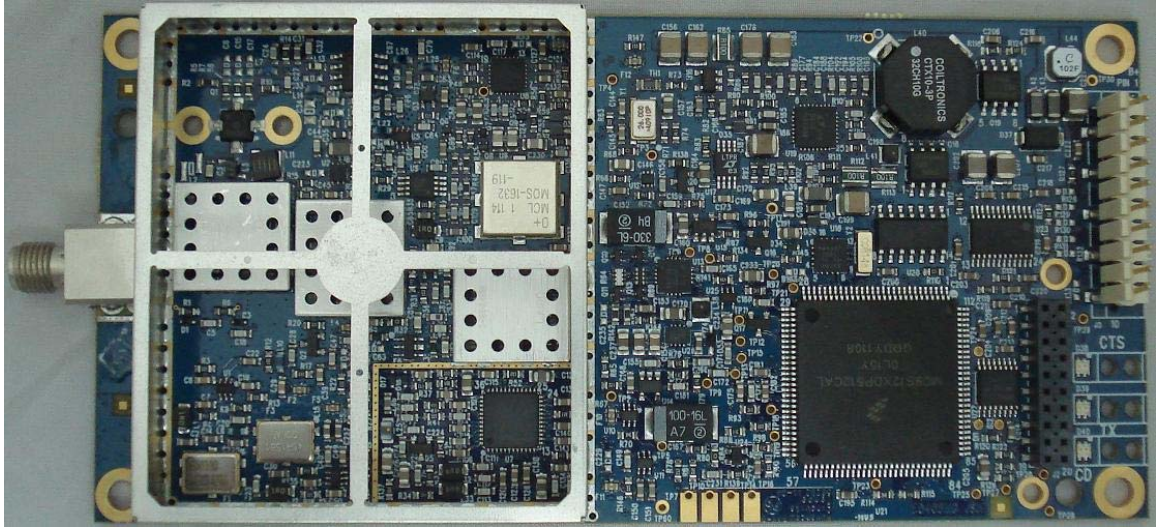




LSR455-EU-C, Label



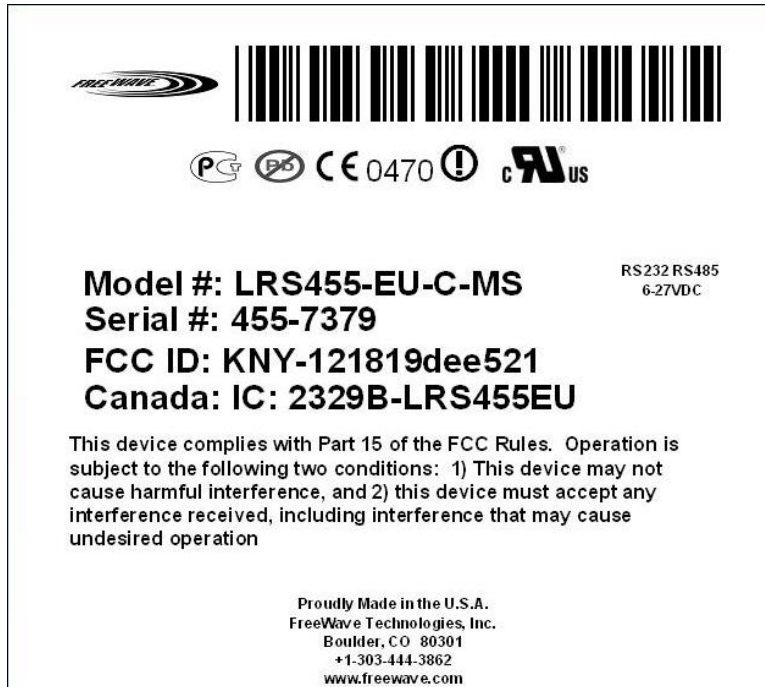
LSR455-EU-C, Bottom



LSR455-EU-C, Top No Shield



LSR455-EU-C, Top w/ Shield



LRS455-EU-C-MS is identical assembly except the RF connector is MCX instead of SMA.

-----



LRS455-EU-CE, Label



LRS455-EU-C Top (Enclosure)



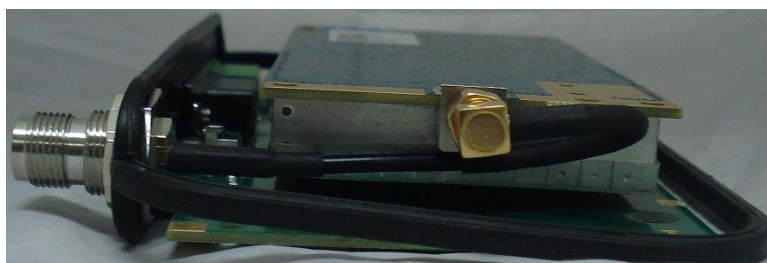
LRS455-EU-C Front (Enclosure)



LRS455-EU-C Bottom (Enclosure)



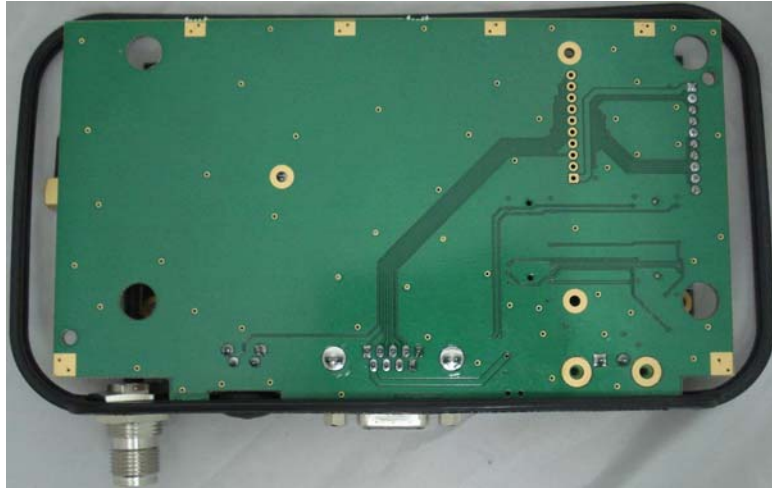
LRS455-EU-C Top board stack (Enclosure)



LRS455-EU-C Side 1 board stack (Enclosure)



LRS455-EU-C Side 2 board stack (Enclosure)



LRS455-EU-C Bottom board stack (Enclosure)

-----

LRS455-EU-CW will be a waterproof version of the LRS455-EU-CE. The front panel will change to accommodate waterproof connectors; however, this has not yet been designed.