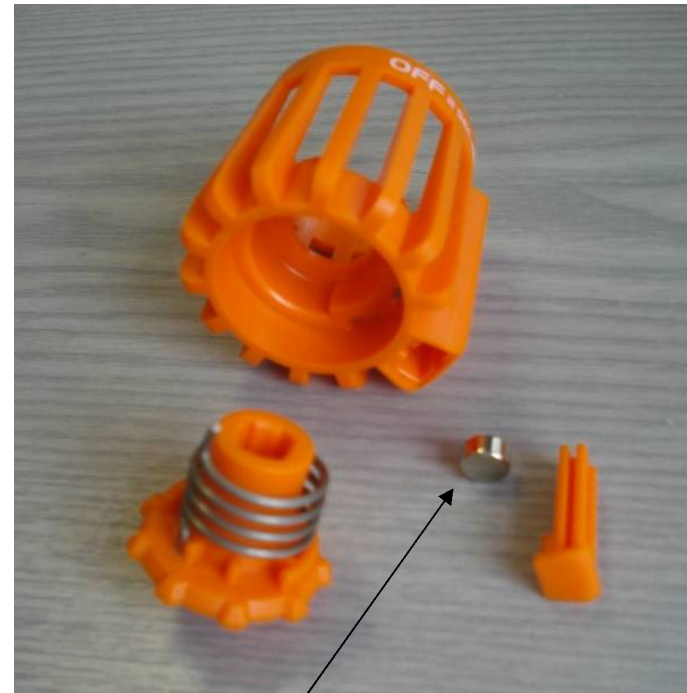
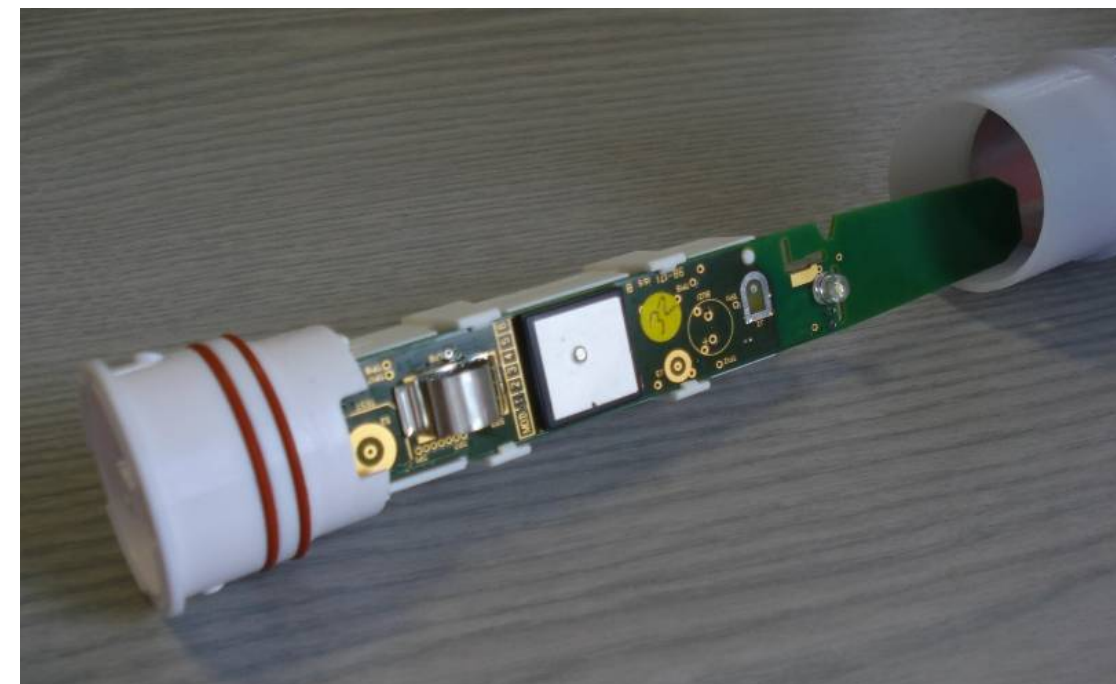
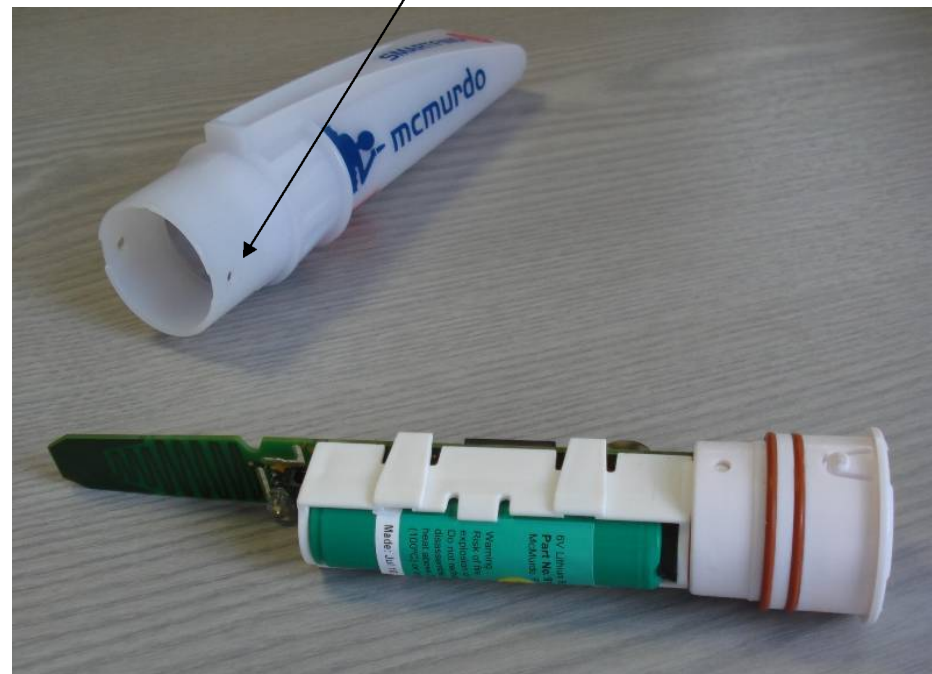




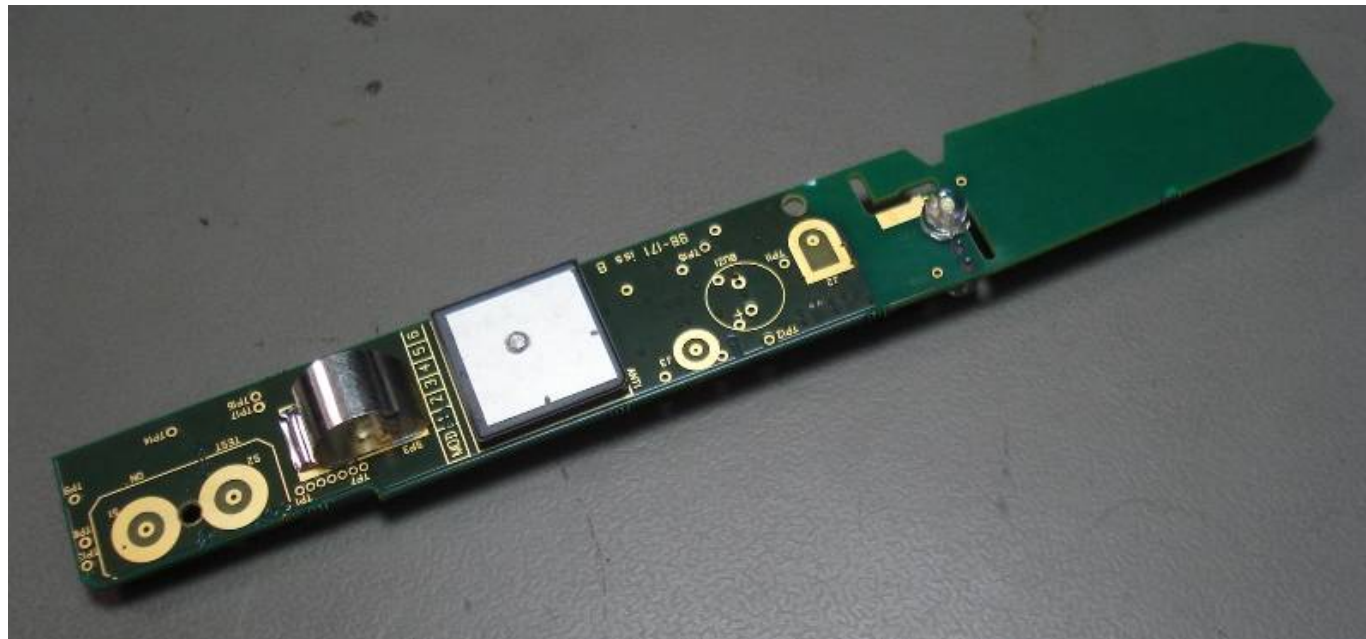
lugs in the End Cap locate to holes in the Radome



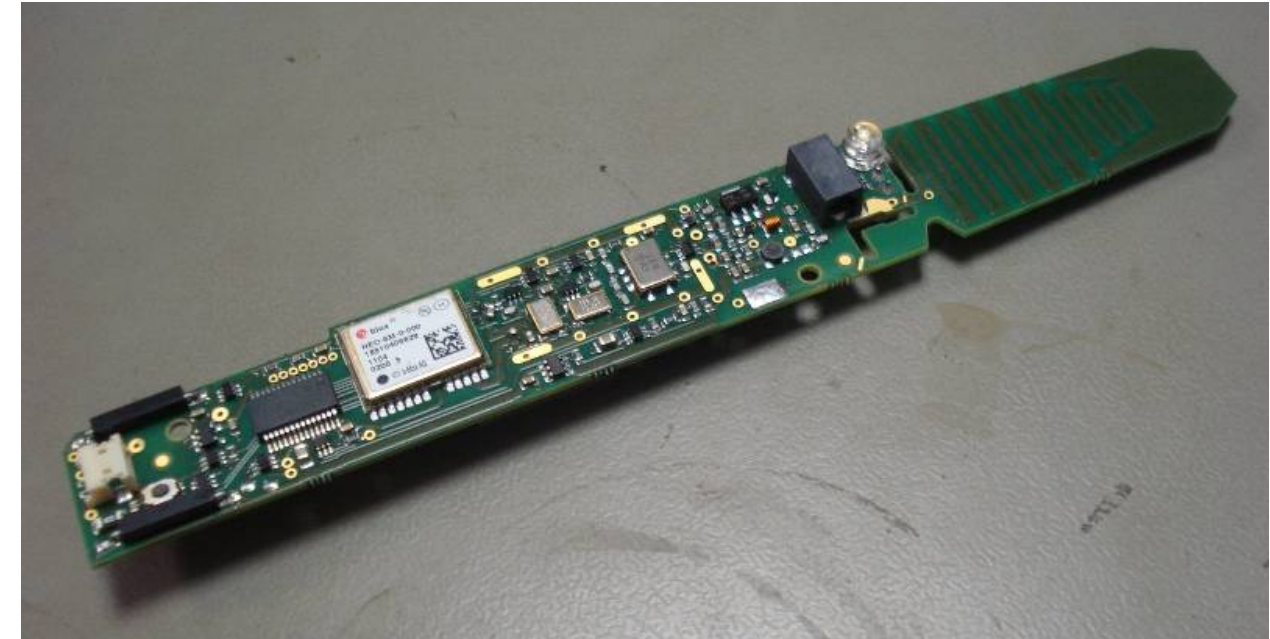
the magnet is potted into the Switch Ring to prevent corrosion



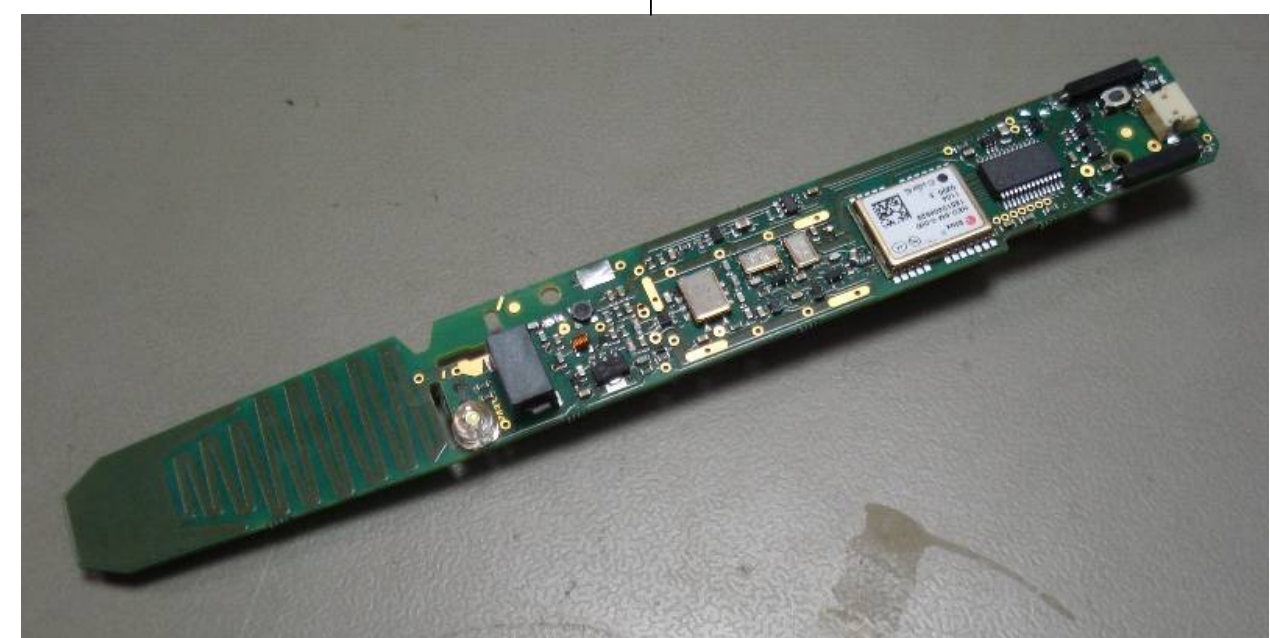
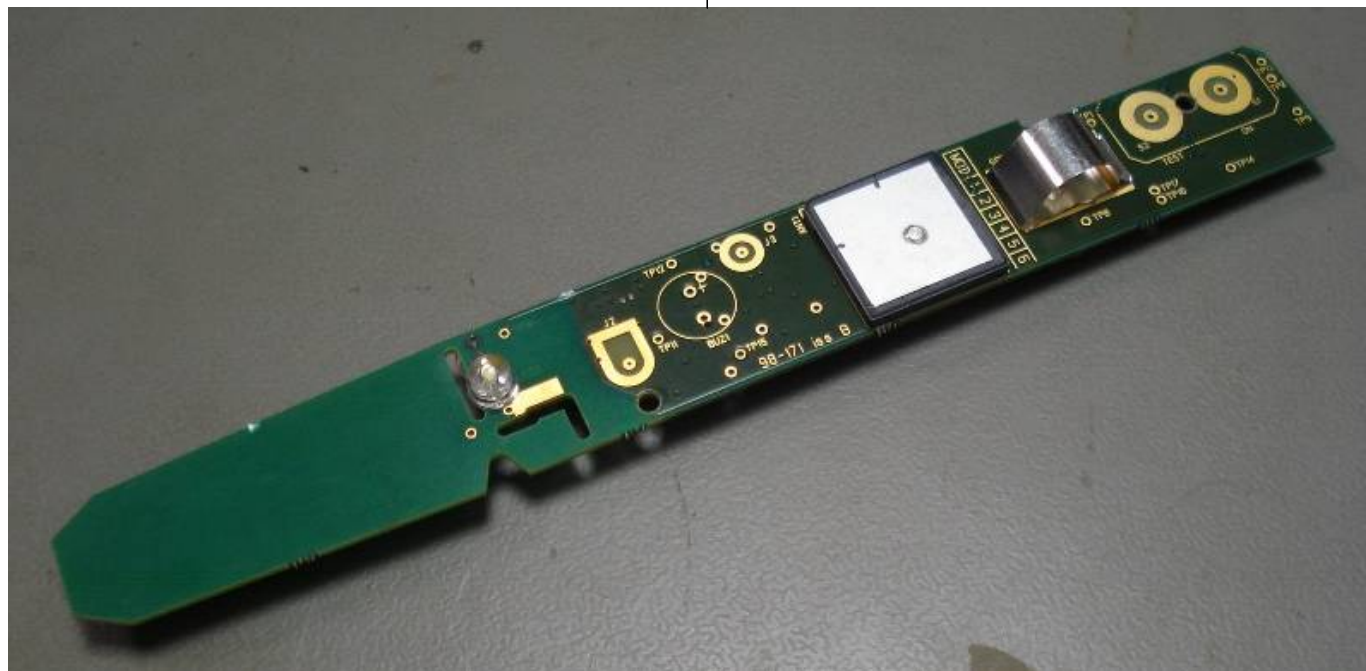


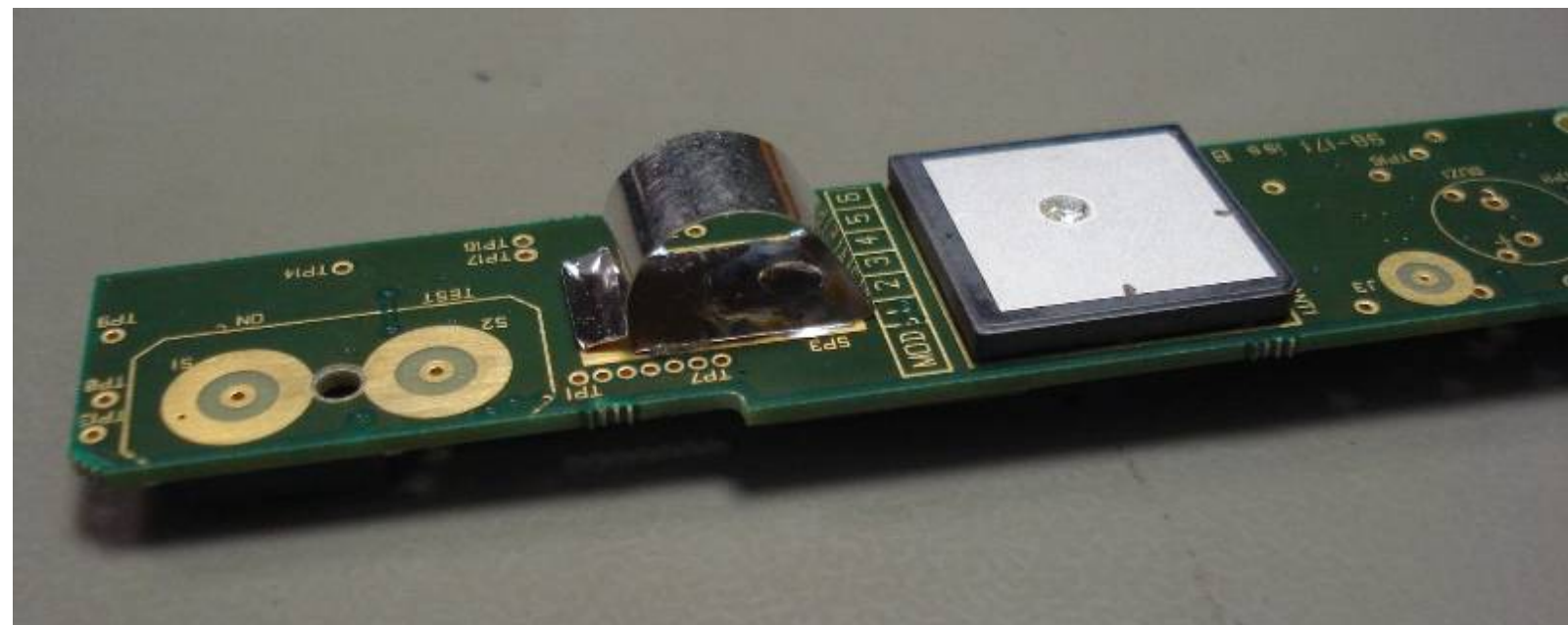
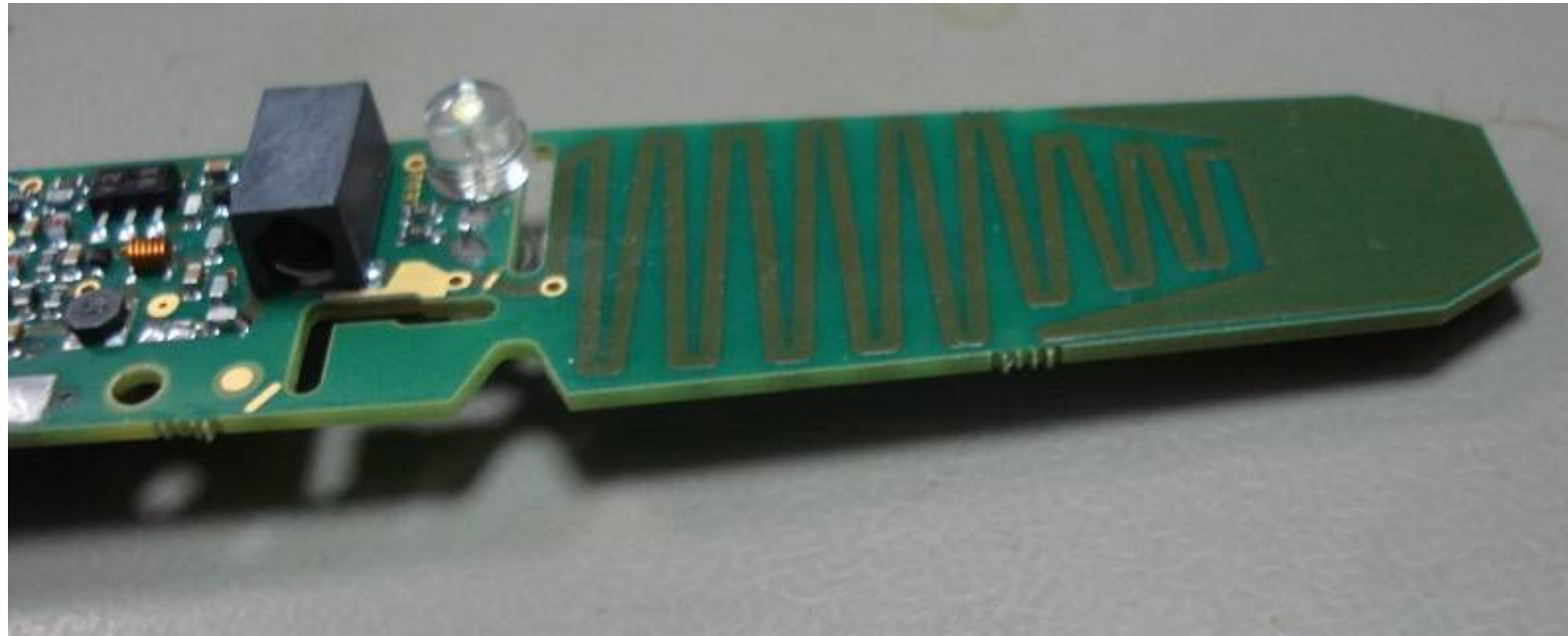


PCB  
rear side



PCB  
component side







Below is a graphical summary of the differences between the electronics of the two devices which make up the Z500 product family:

**Z501:**

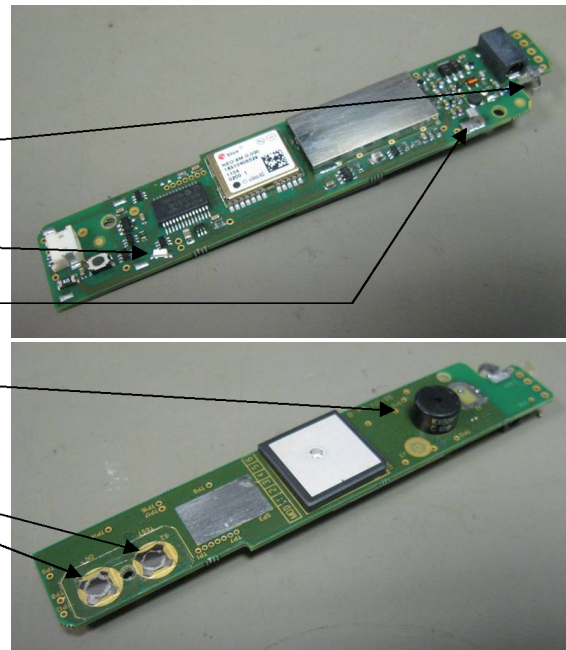
... the PCB antenna is cropped  
and replaced by a spring contact

... it has a single LED

... a small Screen contact spring

... a buzzer

... and tactile switches

**Z502:**

... has no buzzer

... a large Screen contact spring

... two LEDs

... and reed switches

