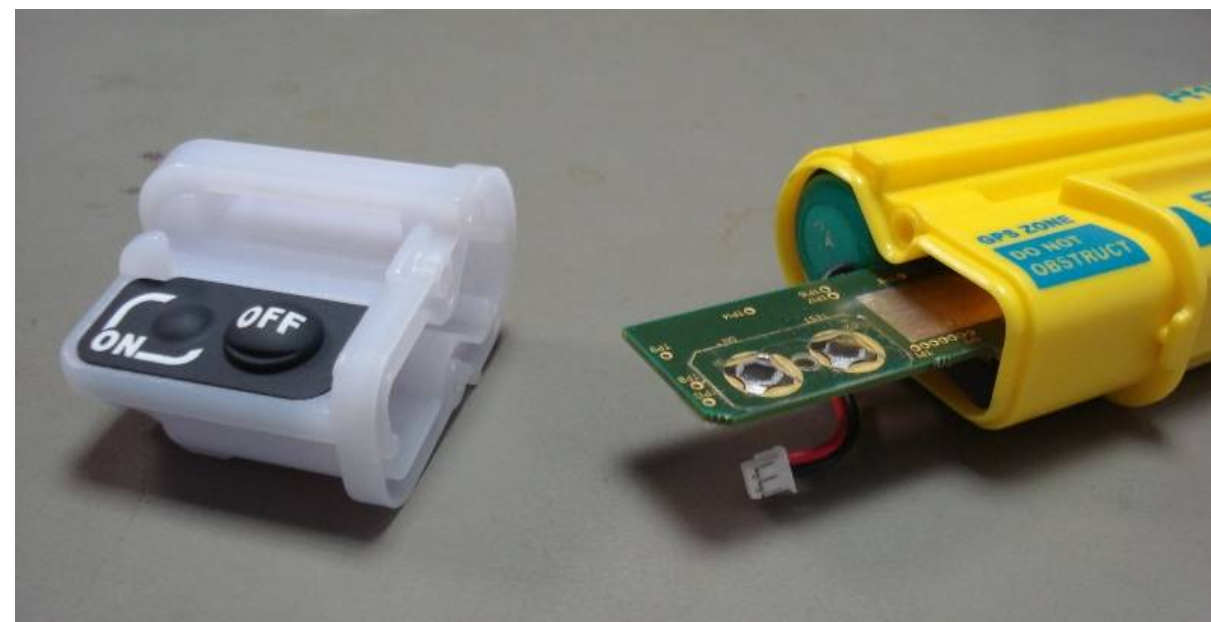
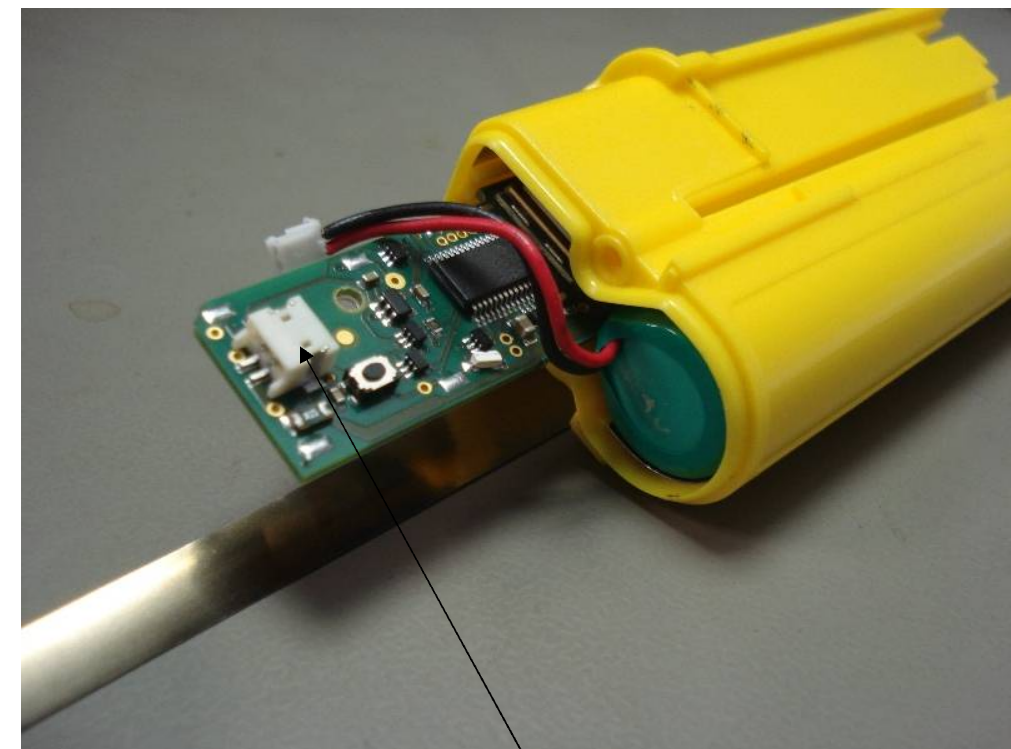
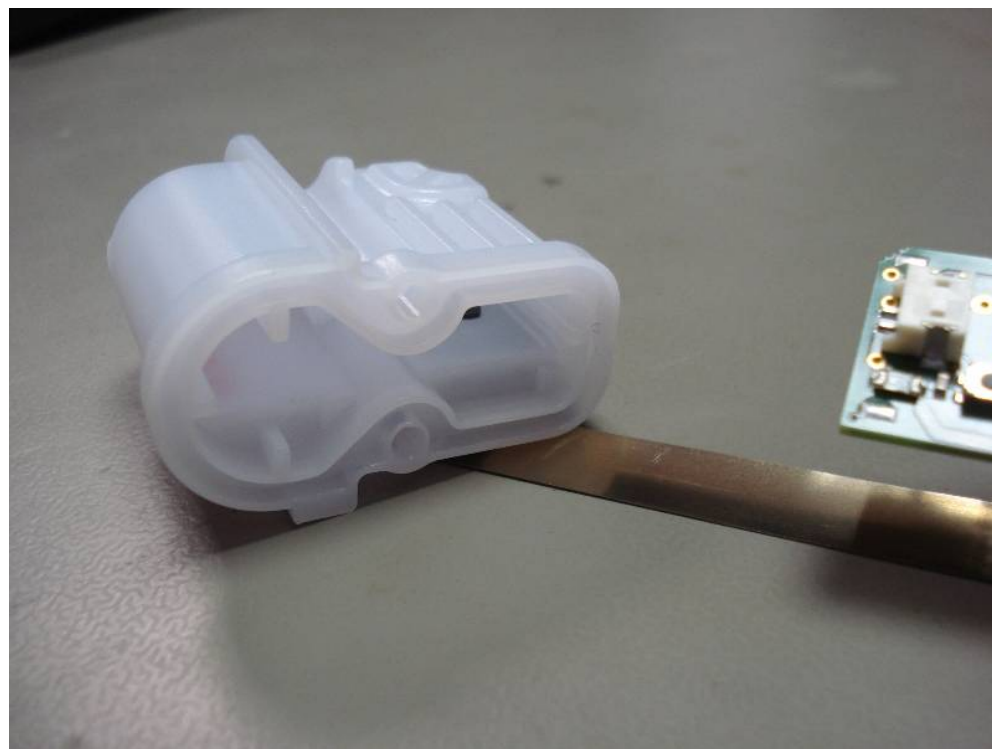
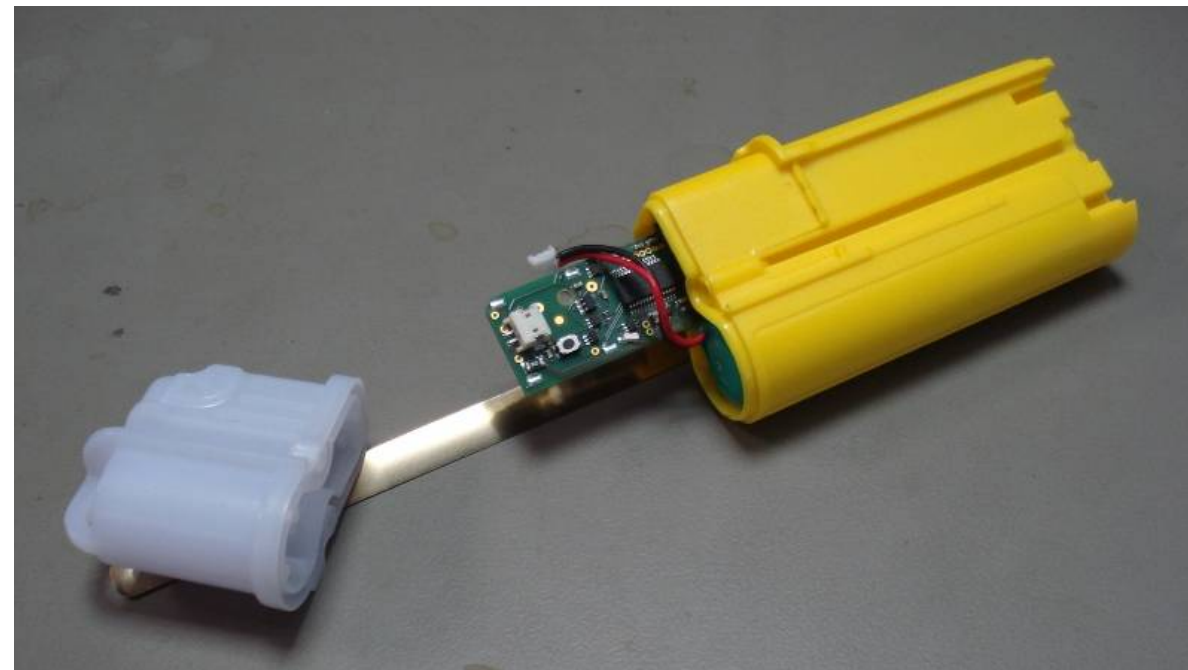


This is a 50 ohm test socket  
not fitted on production units



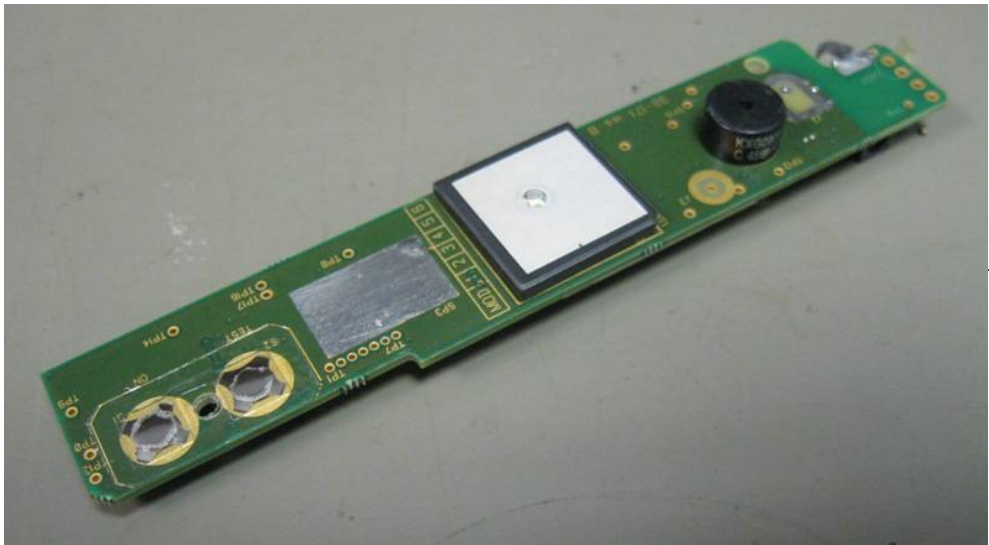
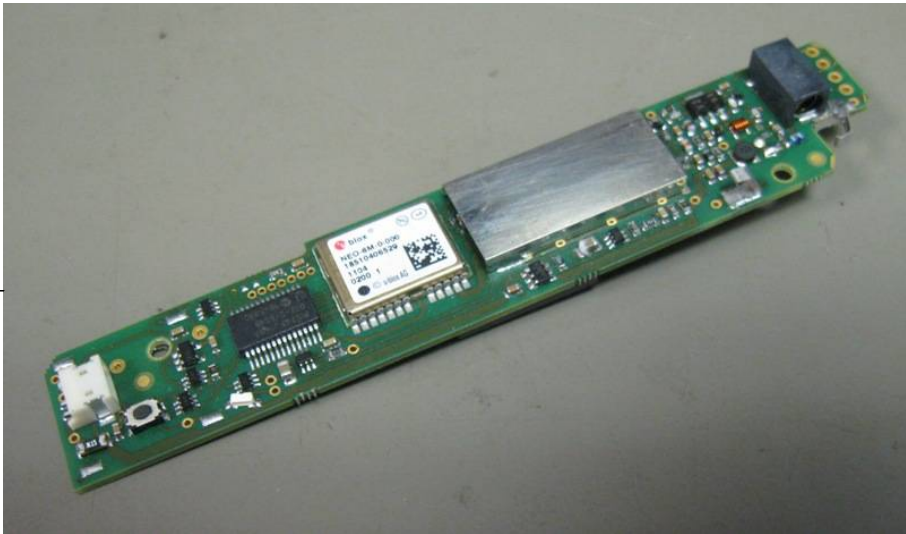


Battery Connector mates here

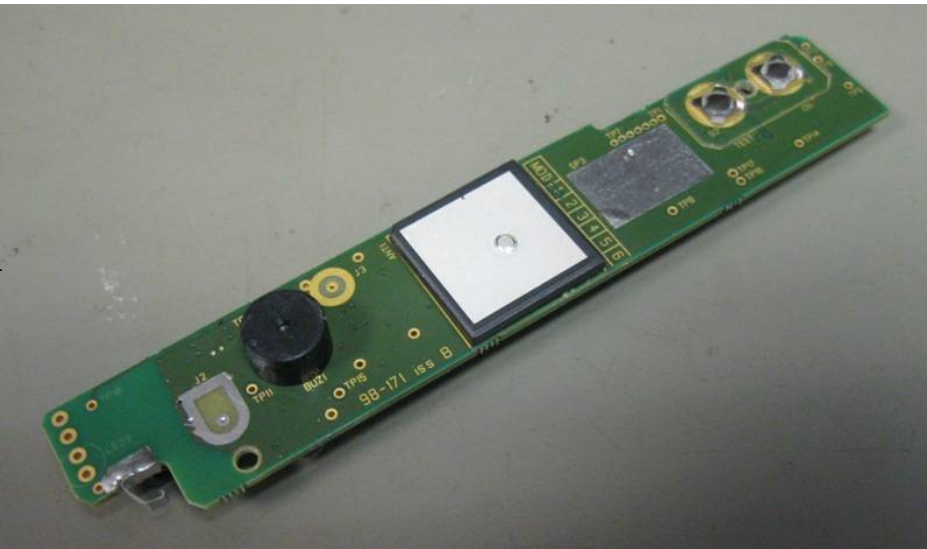




PCB  
component side



PCB  
rear side



Below is a graphical summary of the differences between the electronics of the two devices which make up the Z500 product family:

**Z501:**

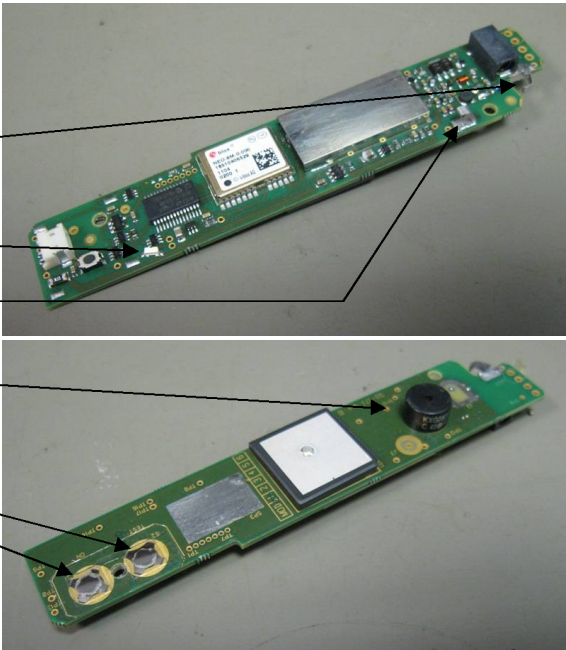
... the PCB antenna is cropped  
and replaced by a spring contact

... it has a single LED

... a small Screen contact spring

... a buzzer

... and tactile switches



**Z502:**

... has no buzzer

... a large Screen contact spring

... two LEDs

... and reed switches

