

1513717.1 Rev2

GPS/GRPS MOTHERBOARD, ST-696

738-02003-001 REV 02
810-02003-001 REV

ANT-A



SIEMENS XT65

RFID MODULE (BASED ON ST-614), ST-696

738-02000-001 REV 01 810-02000-001 REV 01

SIE#018

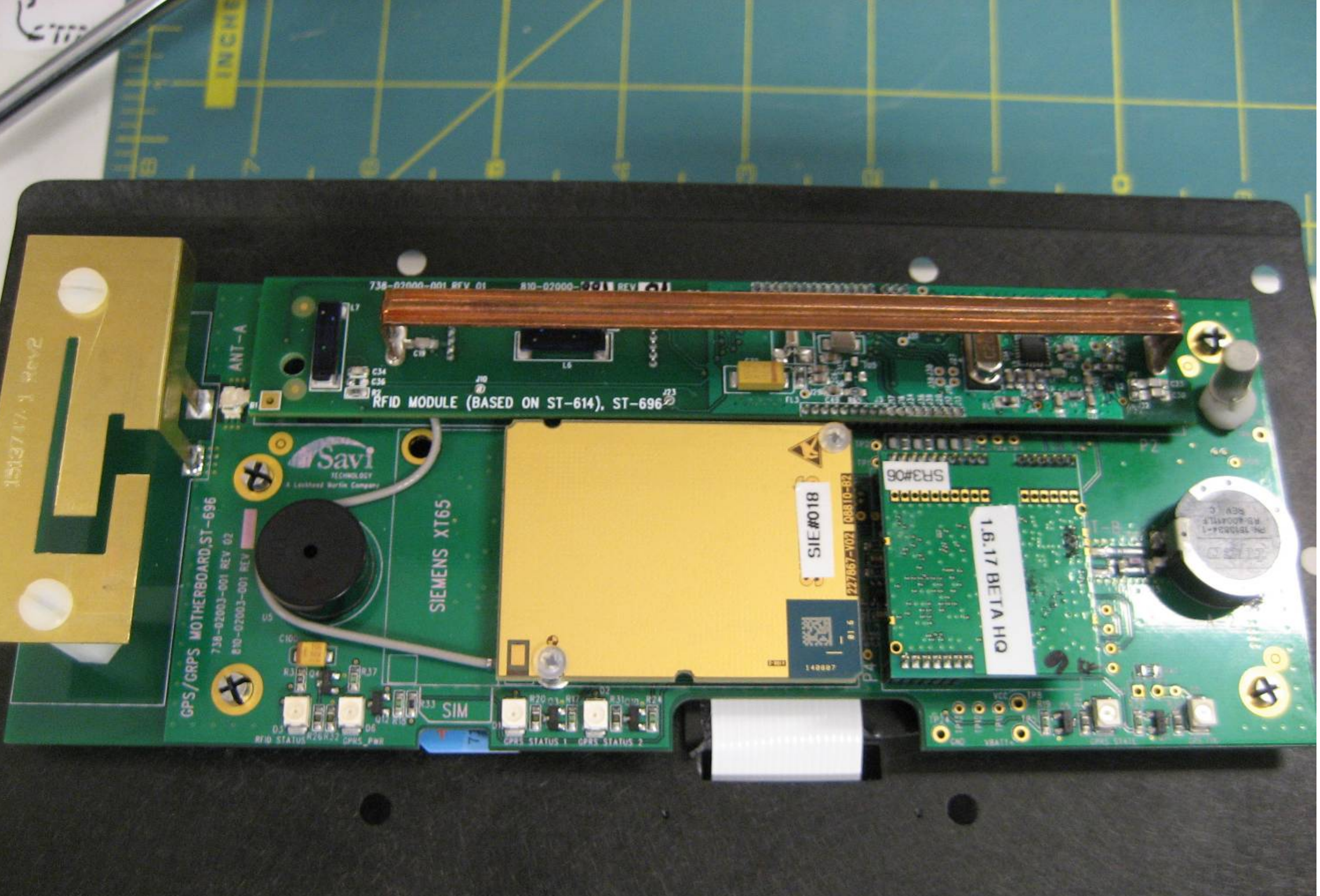
1.6.17 BETA HQ

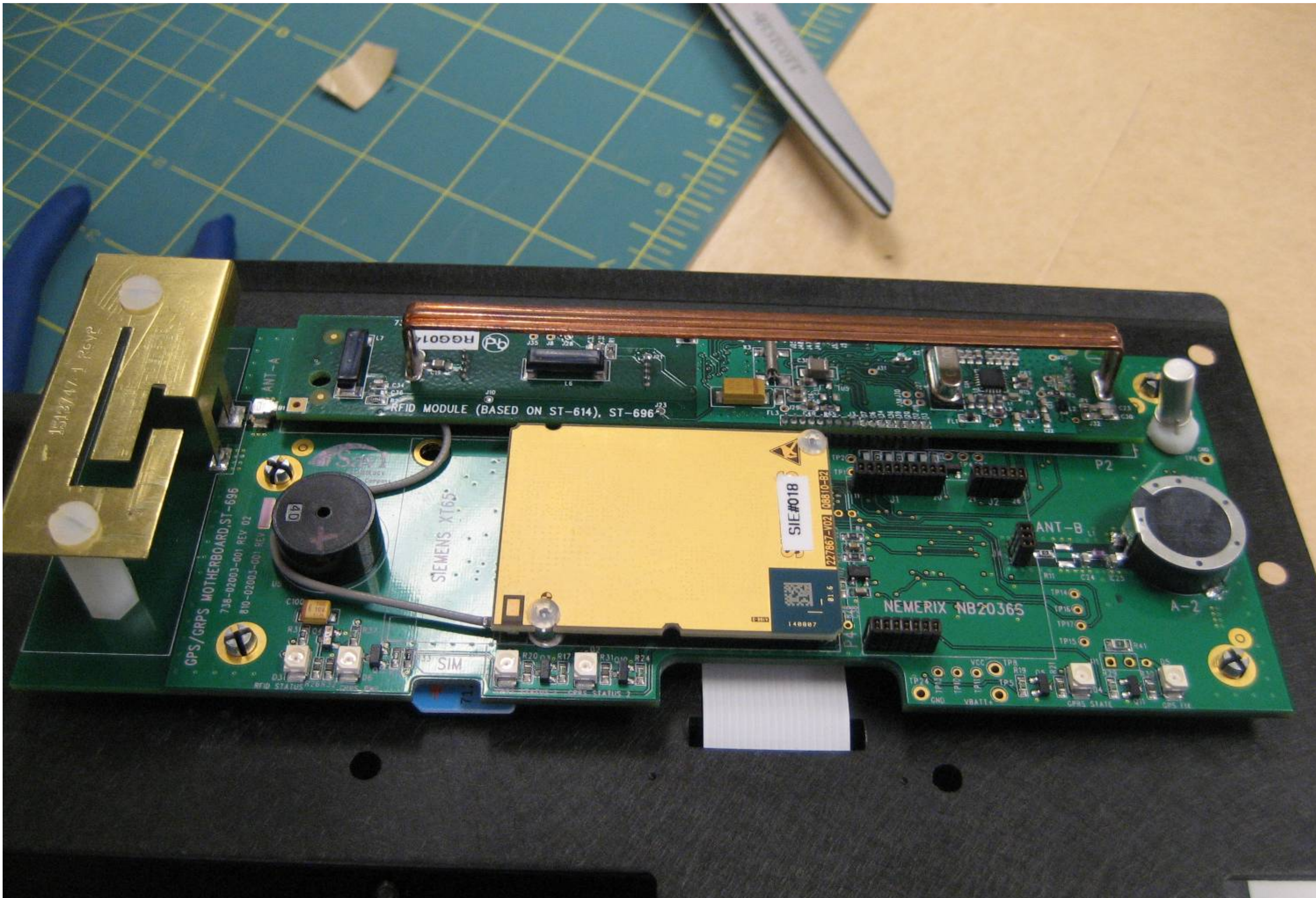
SF3#06



140007

227867-V02 08810-82





GPS/GPRS MOTHERBOARD, ST-696
738-02003-001 REV 02
810-02003-001 REV 01

RFID MODULE (BASED ON ST-614), ST-696

SIEMENS XT65

SIE #018

227867-V02 08810-82

NEMERIX NB20365

SIM

ANT-B

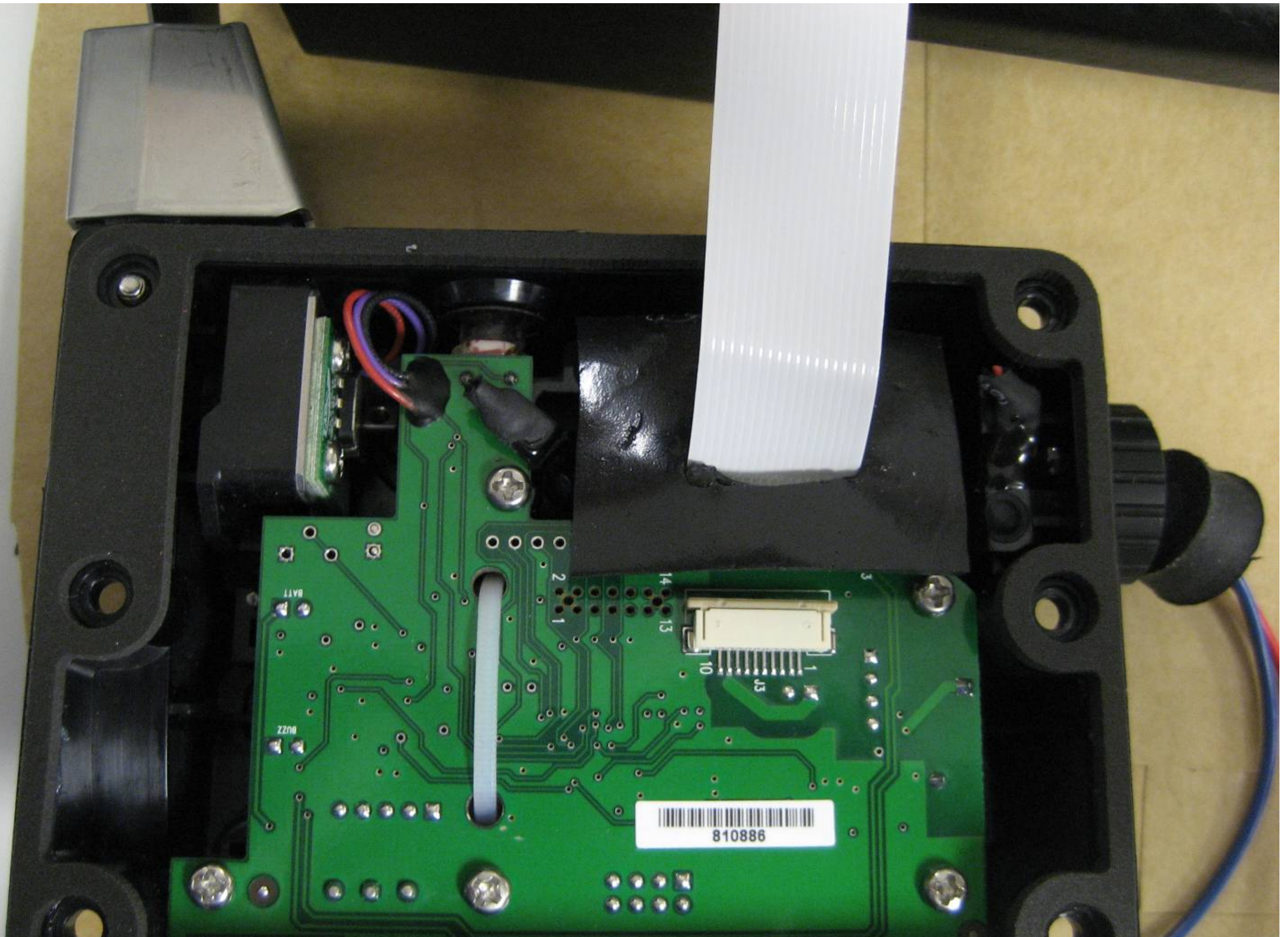
A-2

RFID STATUS

GPRS STATUS

GPRS STATE

GPRS TX



810886

BATT

BUZZ

2

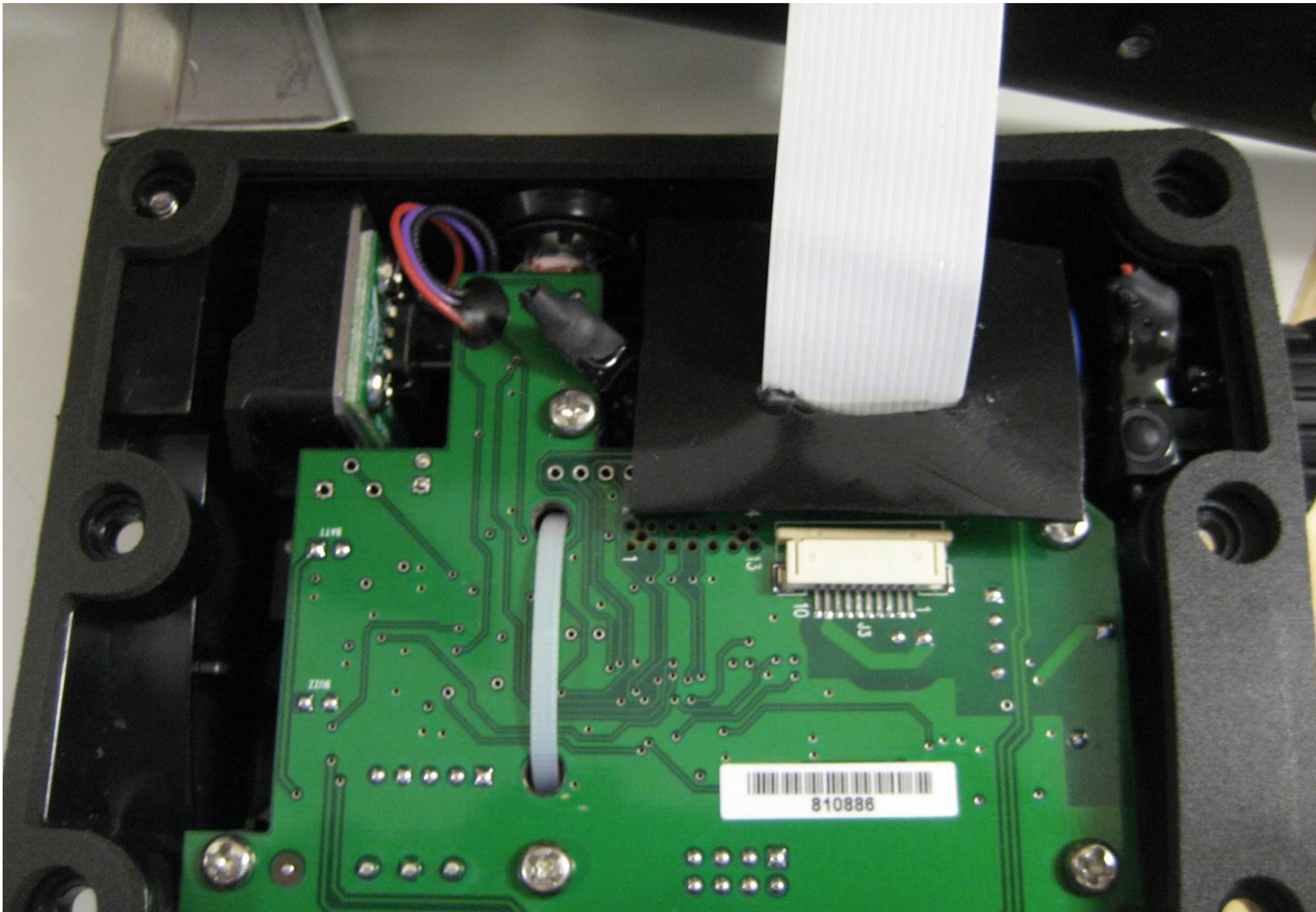
1

14

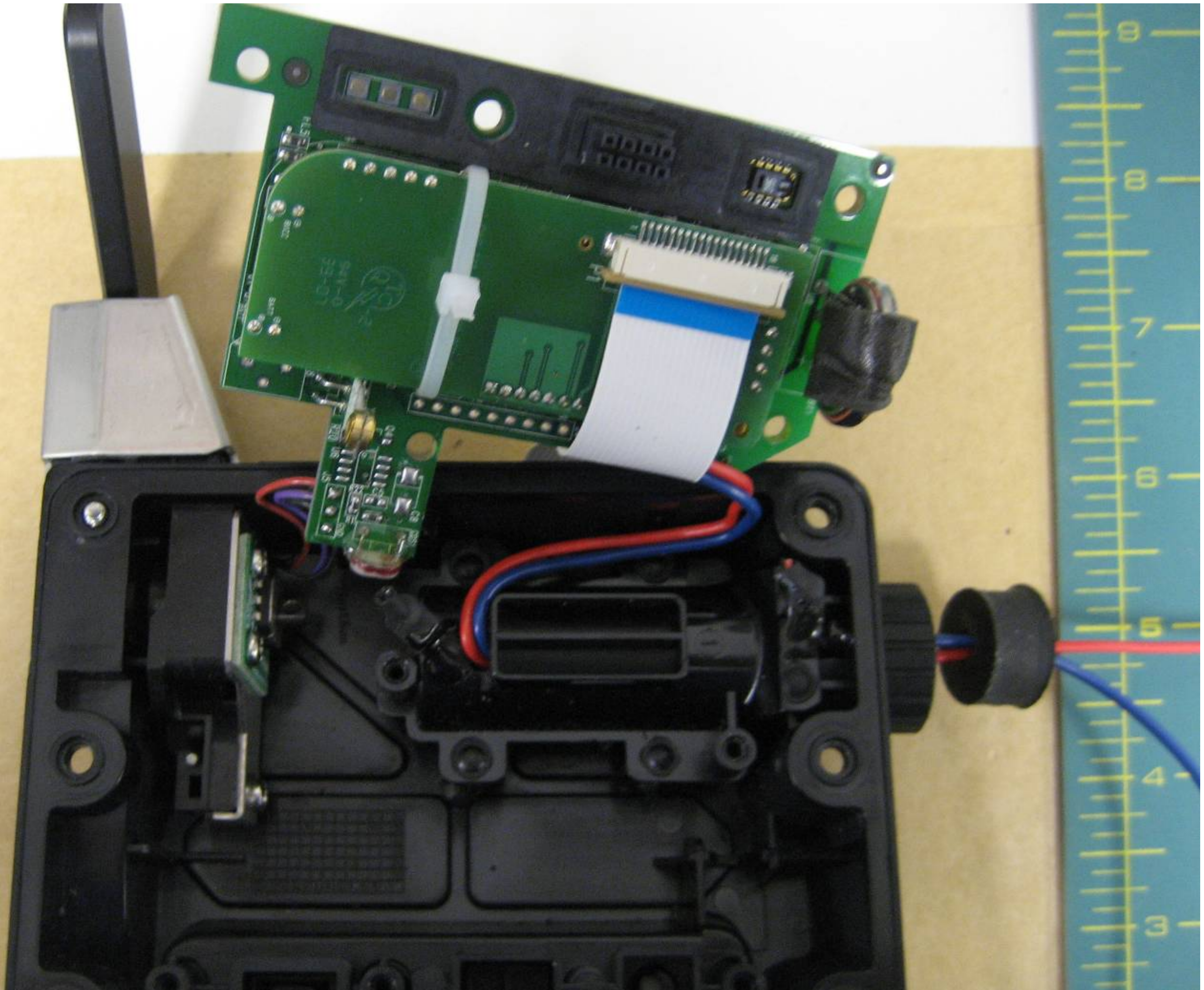
13

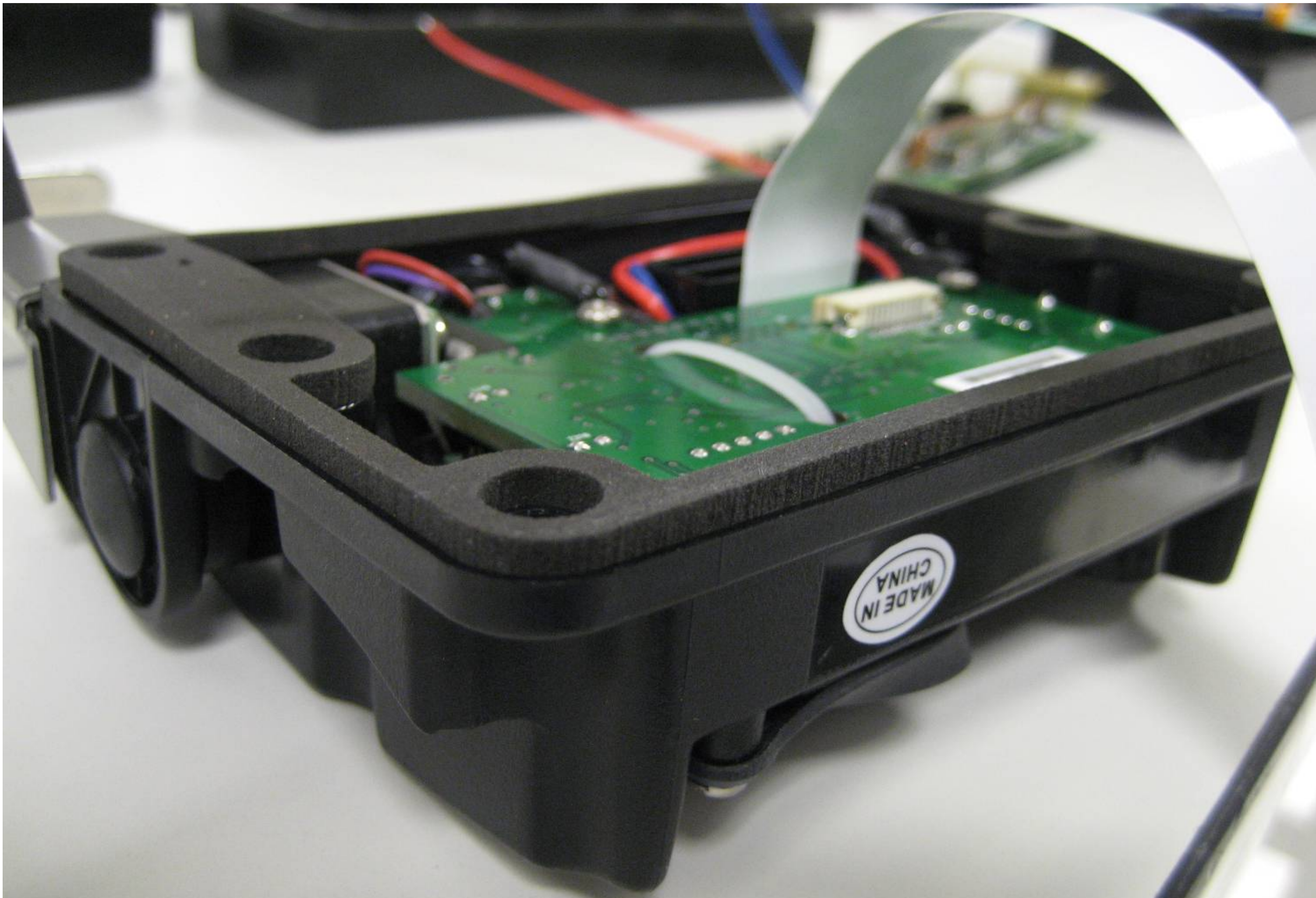
10

J3

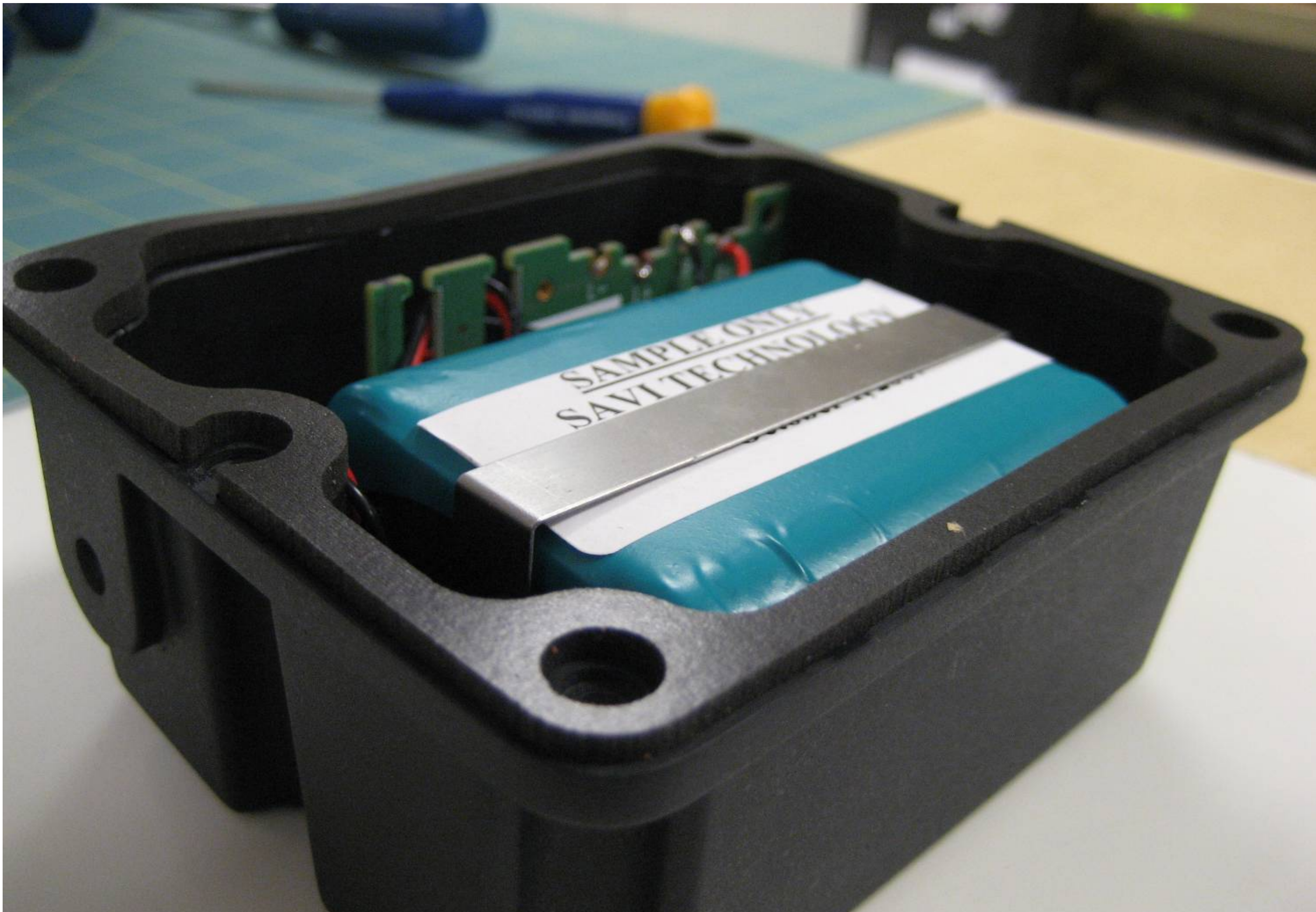


810886

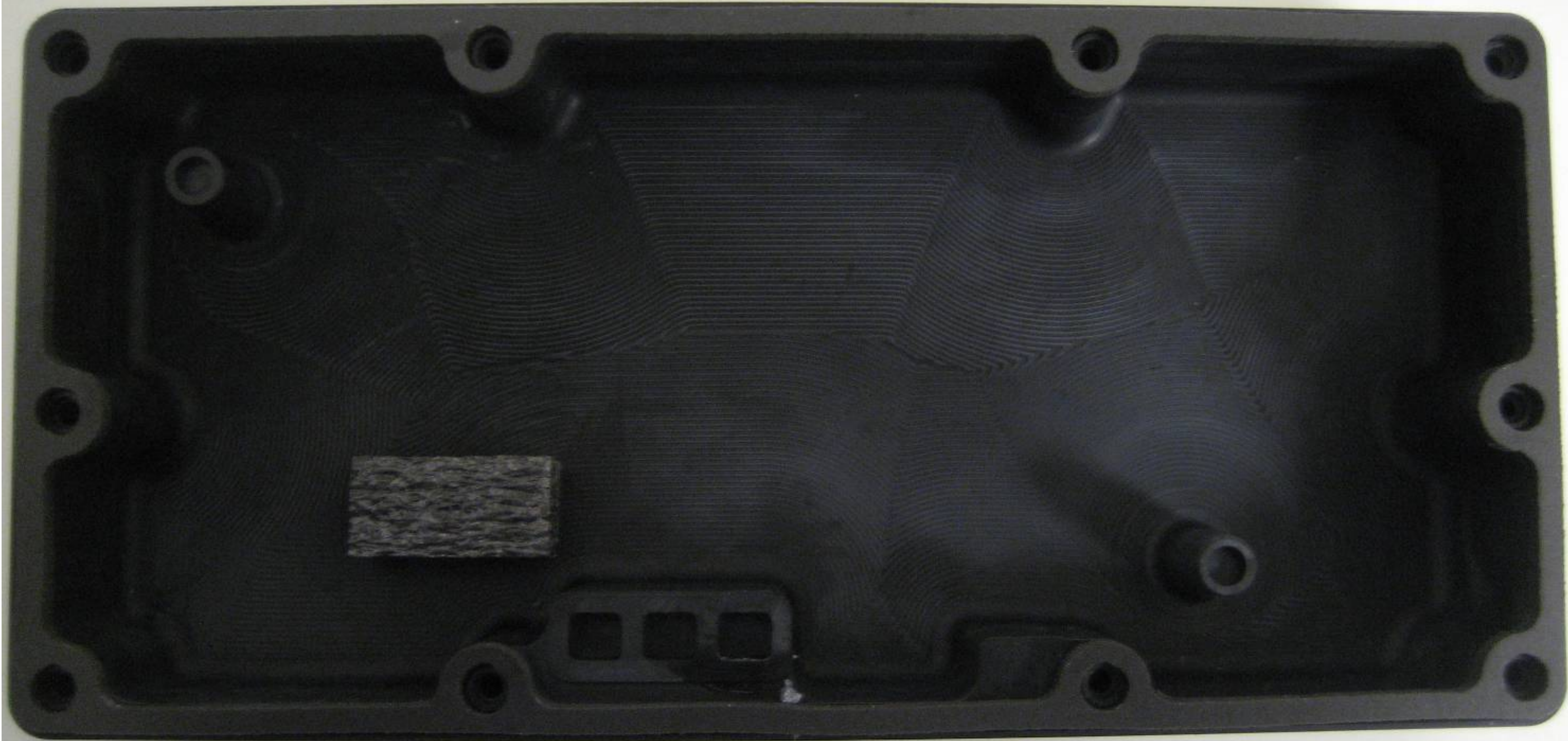




MADE IN CHINA



SAMPLE ONLY
SAVI TECHNOLOGY





15L3747-1 Rev2

GPS/GPRS MOTHERBOARD, ST-696

7.58-02003-001 REV. 02

410-02003-001-001

Savi
SOMMART
A Lucent Networks Company

SIEMENS XT65

SIM

RFID MODULE (BASED ON ST-614), ST-696

7.58-02000-001 REV. 01

810-02000-001 REV. 01

R00015

SIE #01B

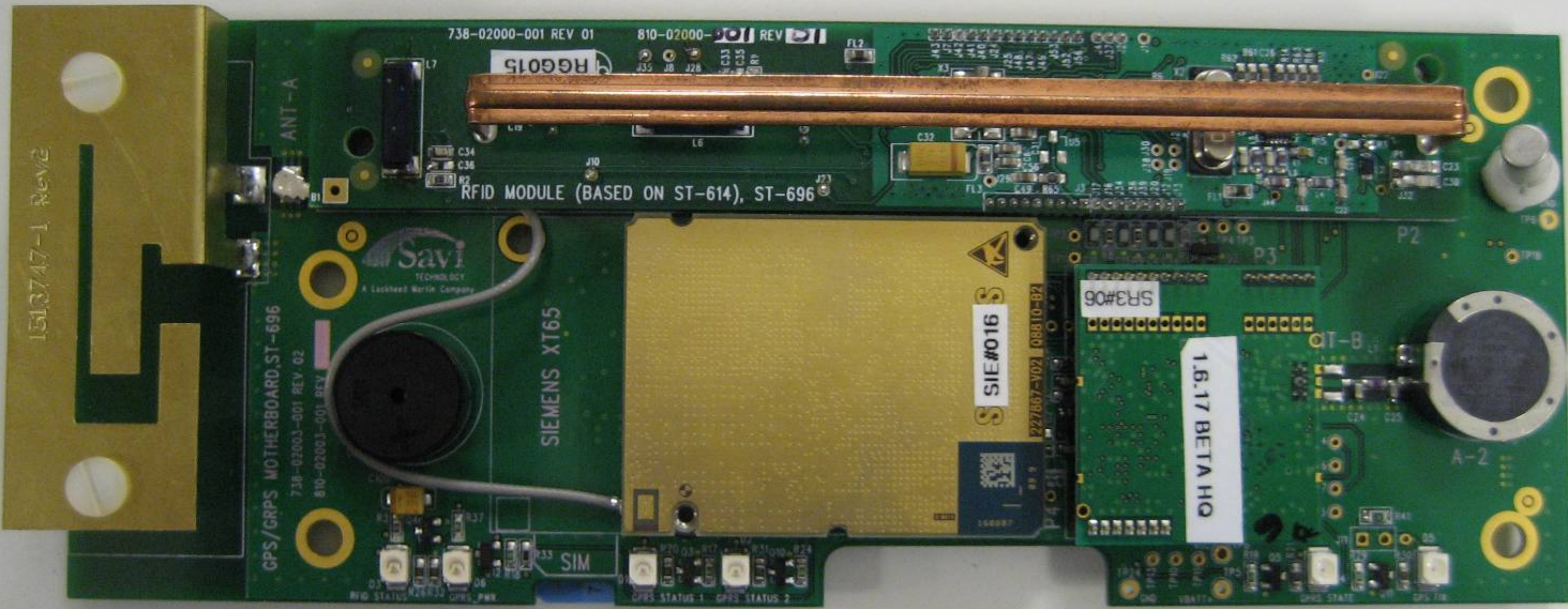
SPG#08

1.6.17 BETA HQ

4

4

A-2



1513747-1 Rev2

GPS/GRPS MOTHERBOARD, ST-696

738-02003-001 REV 02
810-02003-001 REV

Savi
TECHNOLOGY
A Lockheed Martin Company

SIEMENS XT65

738-02000-001 REV 01

810-02000- REV

HG6015

RFID MODULE (BASED ON ST-614), ST-696

SIE#016

227867-Y02 08810-02

SR3#06

1.6.17 BETA HQ

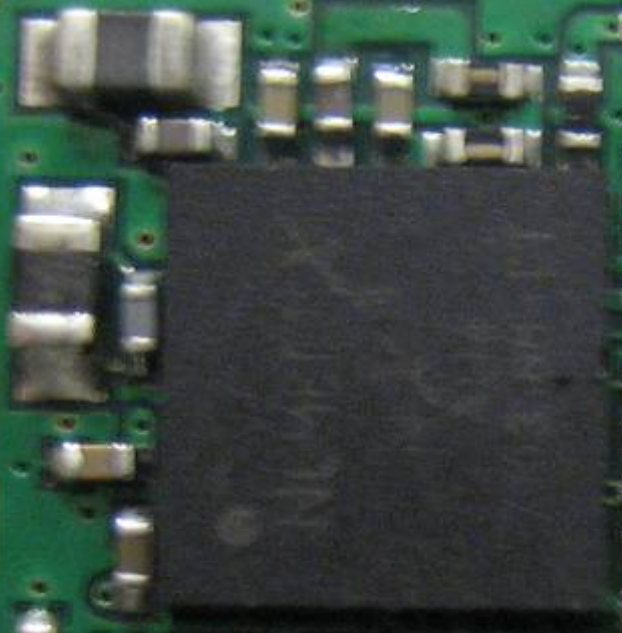
SIM

GRPS STATUS 1 GRPS STATUS 2

A-2

SAMPLE ONLY
SAVI TECHNOLOGY
UR18650F-6

Nemer iX NB2036S V1.1 PPS



A728L

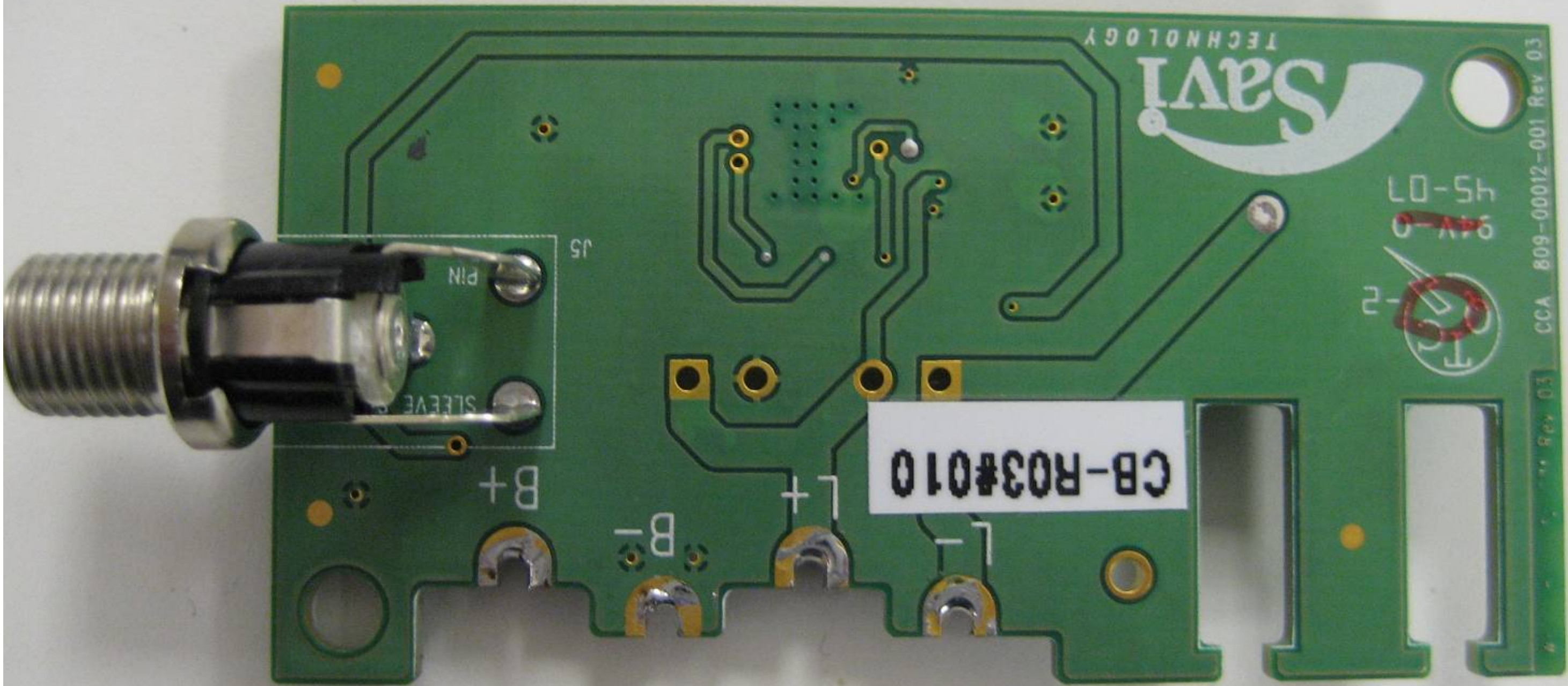
R 5077
1058 5A

4R7



1.6.17 BETA HQ

SR3#06



SAVI

TECHNOLOGY

CB-R03#010

PIN

SLEEVE

B+

B-

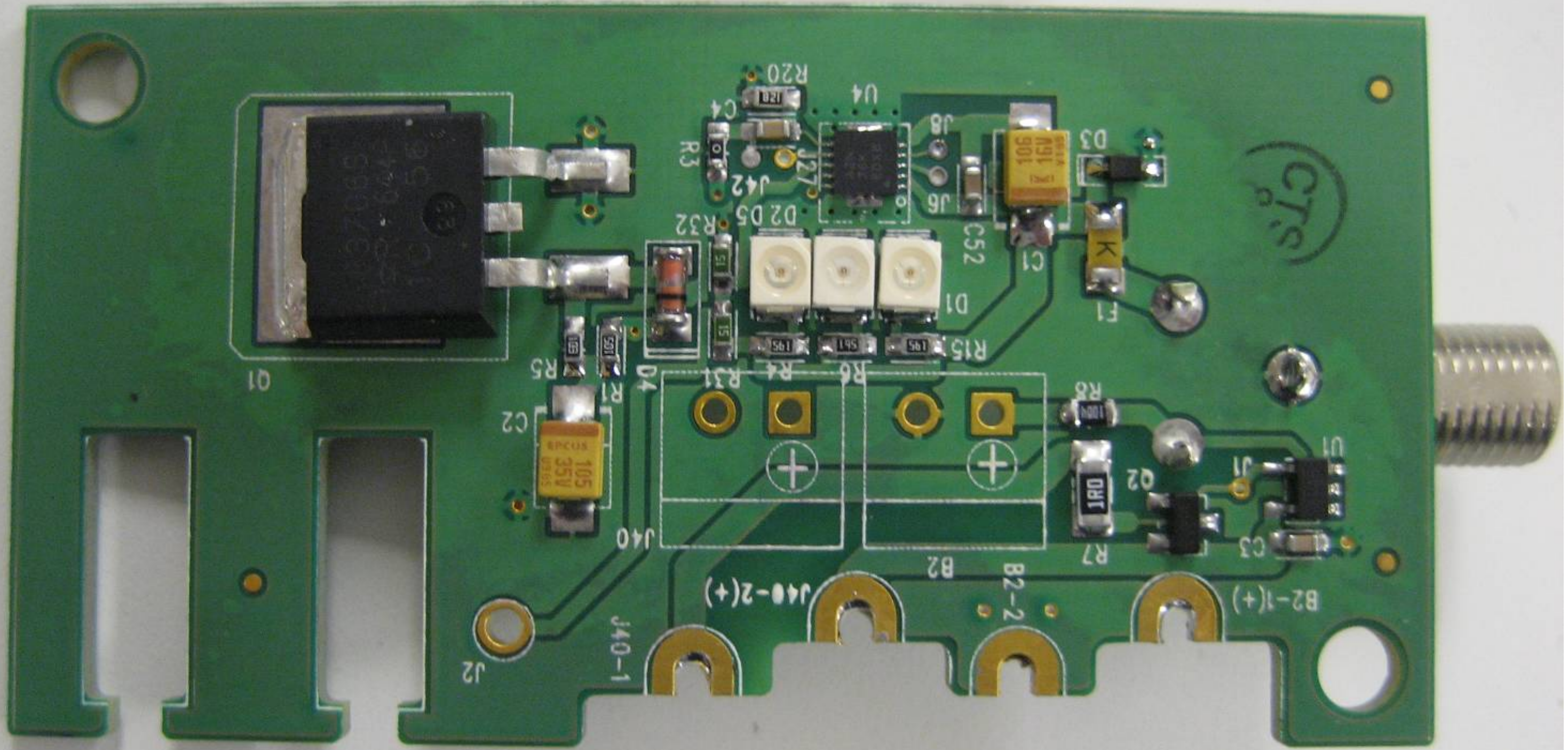
J5

45-01

2

CCA 809-00012-001 Rev 03

Rev 03





at&t
3G
11539845886

GM209F +
0580R6
0.12F 70mS
4.5V
CAP-X
Made in Australia
BAL

ETI
94V-B
43-07

Pb

47
R23 08
R15
C28
R15 R22 26 C37
VCC 09
GND C7

18A11+

AD5709
CRU2
R719
R25
R26
R29
R36
R38
R39
R40
R41
R42
R43
R44
R45
R46
R47
R48
R49
R50
R51
R52
R53
R54
R55
R56
R57
R58
R59
R60
R61
R62
R63
R64
R65
R66
R67
R68
R69
R70
R71
R72
R73
R74
R75
R76
R77
R78
R79
R80
R81
R82
R83
R84
R85
R86
R87
R88
R89
R90
R91
R92
R93
R94
R95
R96
R97
R98
R99
R100

AD5709
CRU2
R719
R25
R26
R29
R36
R38
R39
R40
R41
R42
R43
R44
R45
R46
R47
R48
R49
R50
R51
R52
R53
R54
R55
R56
R57
R58
R59
R60
R61
R62
R63
R64
R65
R66
R67
R68
R69
R70
R71
R72
R73
R74
R75
R76
R77
R78
R79
R80
R81
R82
R83
R84
R85
R86
R87
R88
R89
R90
R91
R92
R93
R94
R95
R96
R97
R98
R99
R100

AD5709
CRU2
R719
R25
R26
R29
R36
R38
R39
R40
R41
R42
R43
R44
R45
R46
R47
R48
R49
R50
R51
R52
R53
R54
R55
R56
R57
R58
R59
R60
R61
R62
R63
R64
R65
R66
R67
R68
R69
R70
R71
R72
R73
R74
R75
R76
R77
R78
R79
R80
R81
R82
R83
R84
R85
R86
R87
R88
R89
R90
R91
R92
R93
R94
R95
R96
R97
R98
R99
R100

AD5709
CRU2
R719
R25
R26
R29
R36
R38
R39
R40
R41
R42
R43
R44
R45
R46
R47
R48
R49
R50
R51
R52
R53
R54
R55
R56
R57
R58
R59
R60
R61
R62
R63
R64
R65
R66
R67
R68
R69
R70
R71
R72
R73
R74
R75
R76
R77
R78
R79
R80
R81
R82
R83
R84
R85
R86
R87
R88
R89
R90
R91
R92
R93
R94
R95
R96
R97
R98
R99
R100

TCBS 930880-88355-B200-1

MADE IN GERMANY

CE 0682 ^C ^{SA} _{US}

FCC ID: QIPTC65 IC: 267M-TC65

355632 00 837926 6 V0



ANALOG
DEVICES
AD61020
ABCZ
0734
1248925.1
SINGAPORE

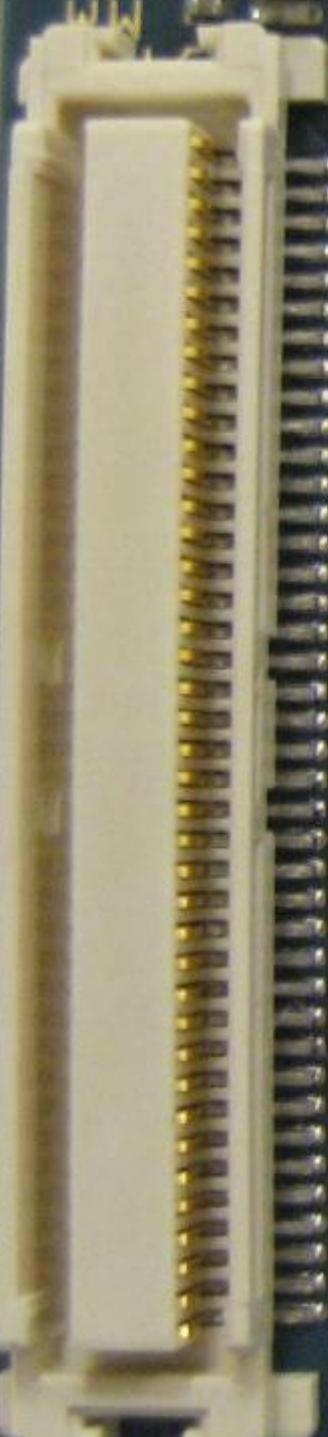
ANALOG
DEVICES
AD61019ABCZ
0733
1239262.1
SINGAPORE

NE8
JA8

M36W0R604
0T12AQ
9934J NS
212 3E 712
MYS



FRB31865
26
781V88





S SIE#016 S



227867-V02 Q8810-B2

160807



89.9

160807



GA1209F
0580R6
0.12F 4.5V
CAP-X
Made in Australia
BAL

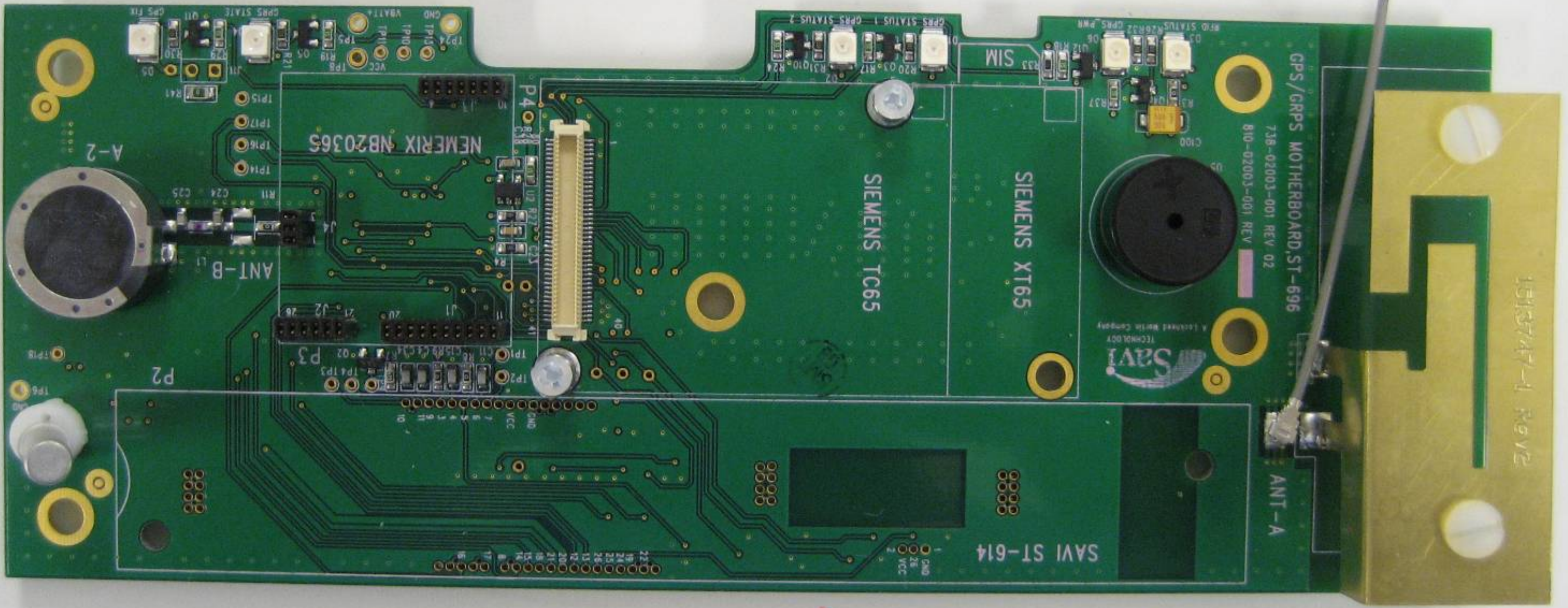
AD0709 #715
AD0709 #715

U6
U7
U8
U9
U10

C17
C18
C19
C20
C21
C22
C23
C24
C25
C26
C27
C28

ETI
94V-B
43-07

Pb



A-2

ANT-B

P2

NEMERIX NB20365

SIEMENS TC65

SIEMENS XT65

GPS/GRPS MOTHERBOARD, ST-696

738-02003-001 REV 02
810-02003-001 REV



SAVI ST-614

ANT-A

1515747-1 REV 2