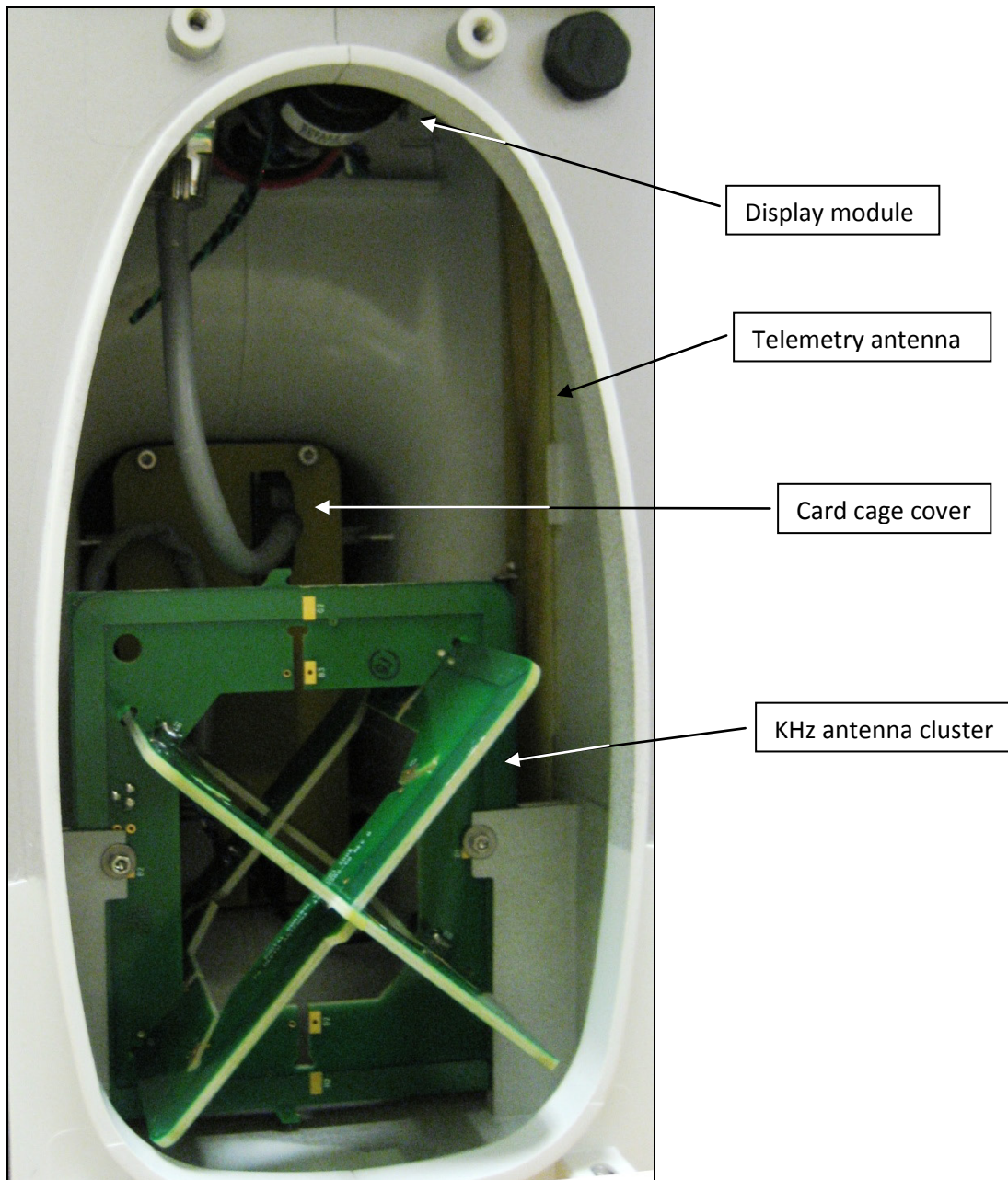
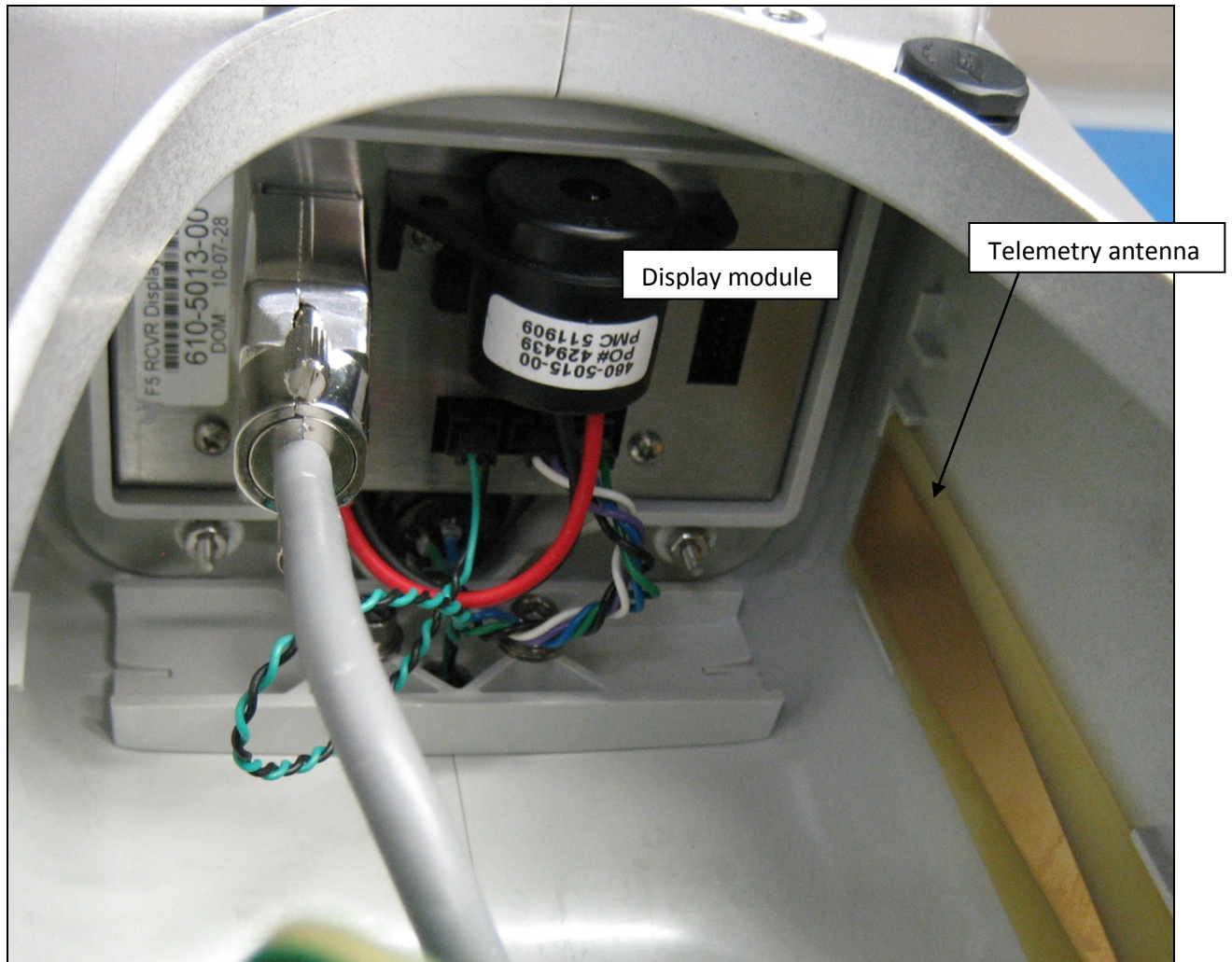


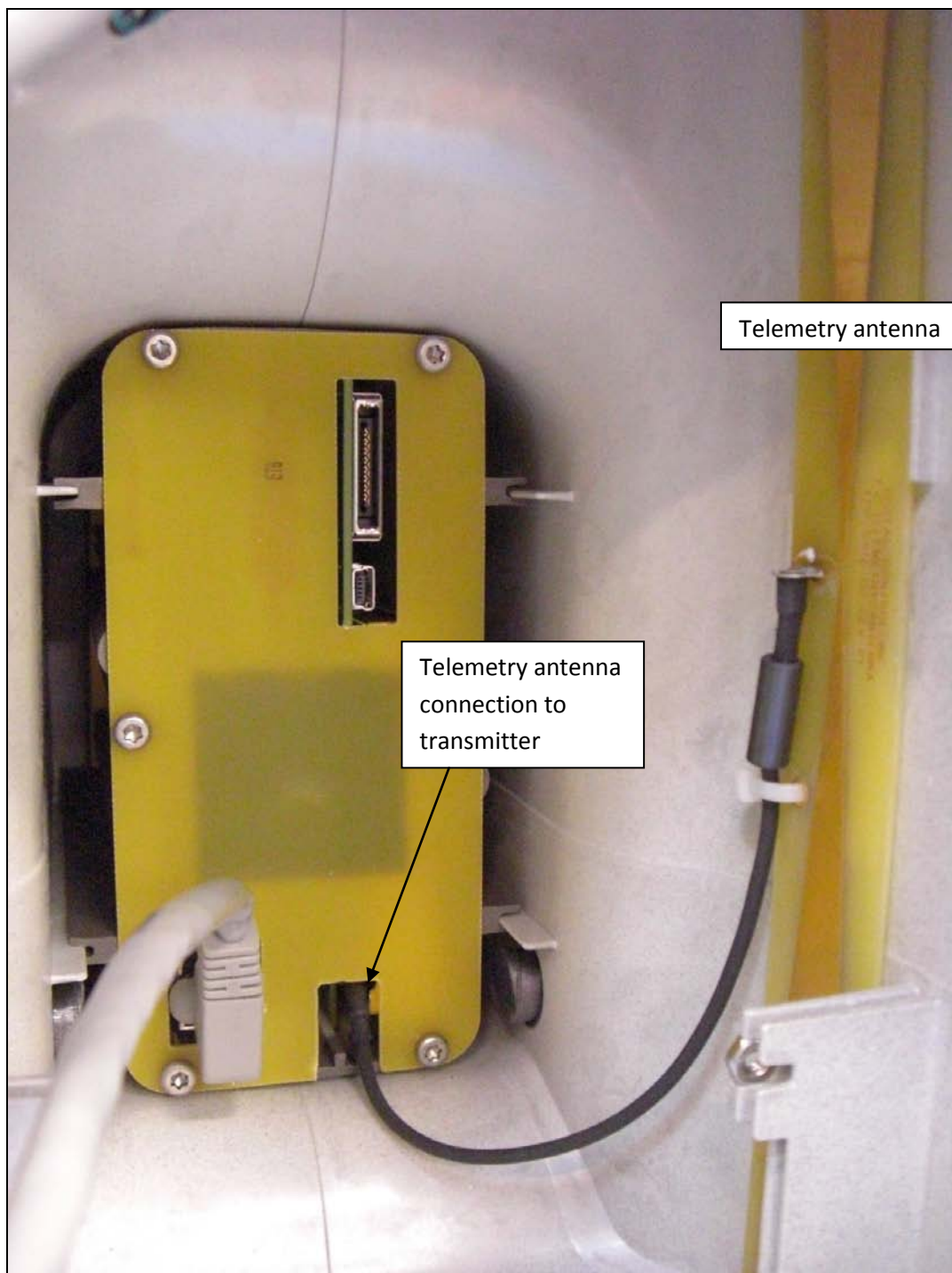
F5 Receiver Internal Photos



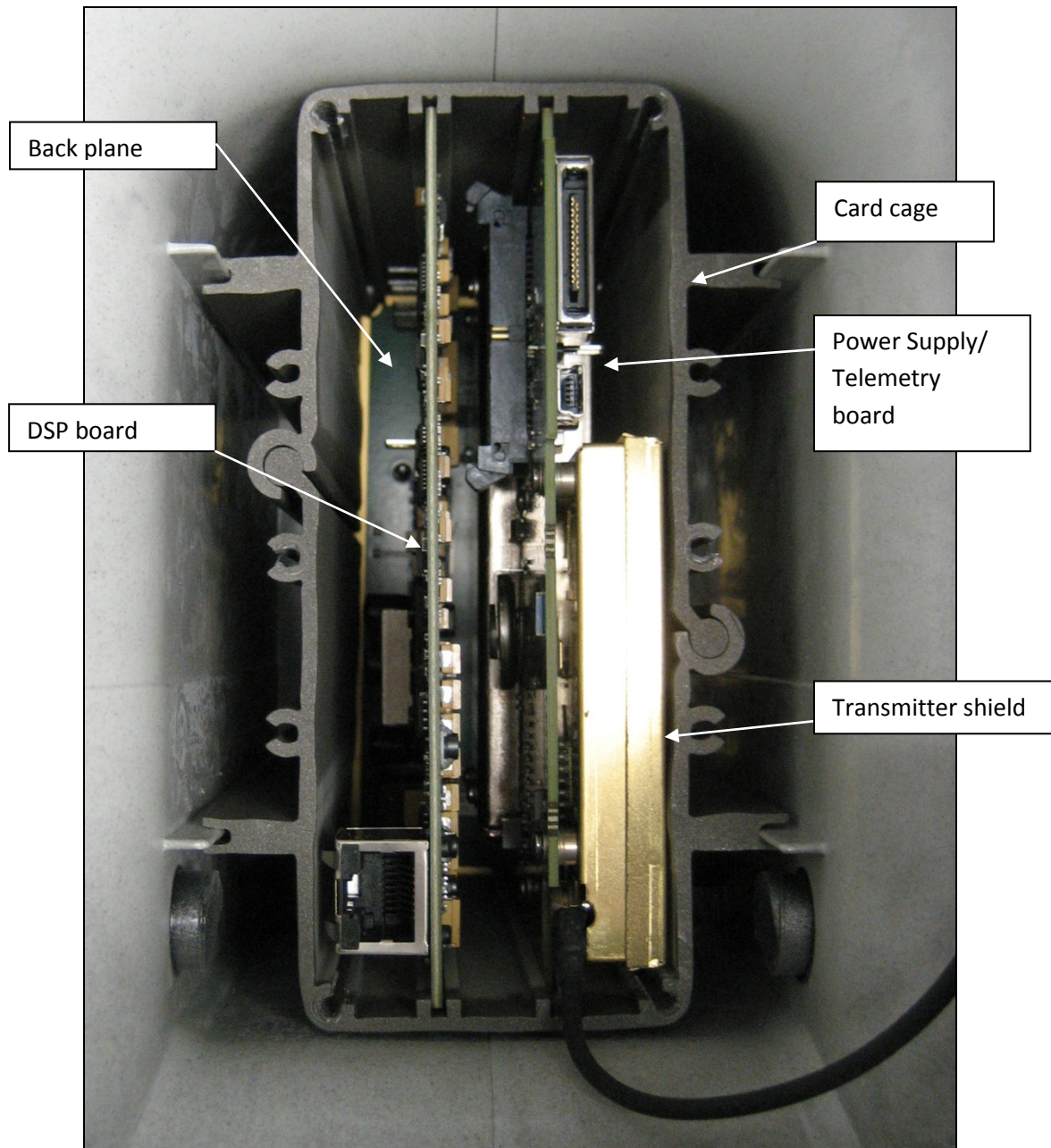
Front Cover Off



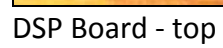
Front cover off showing placement of telemetry antenna and display module



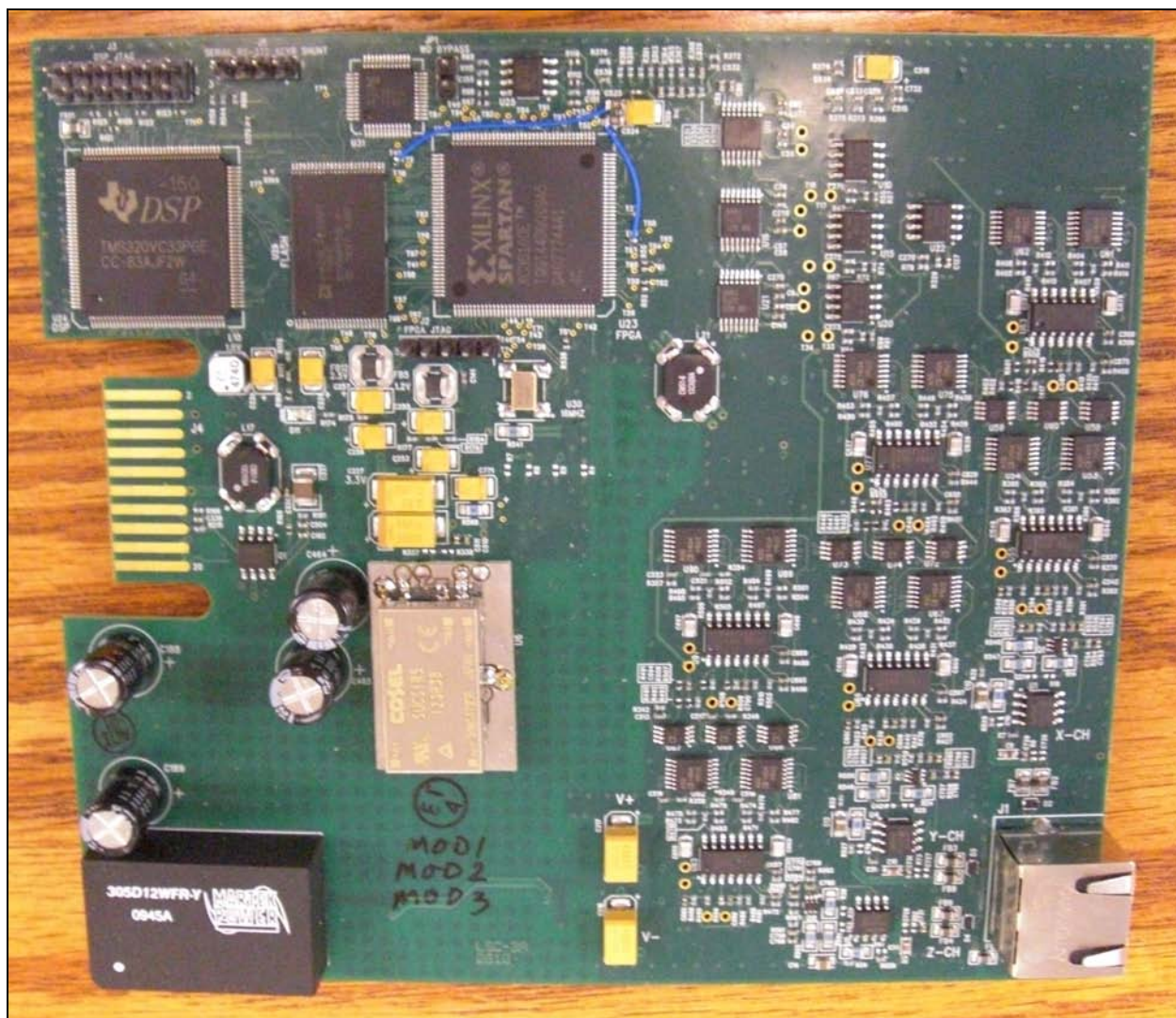
Front cover off showing placement of telemetry antenna and connection to transmitter



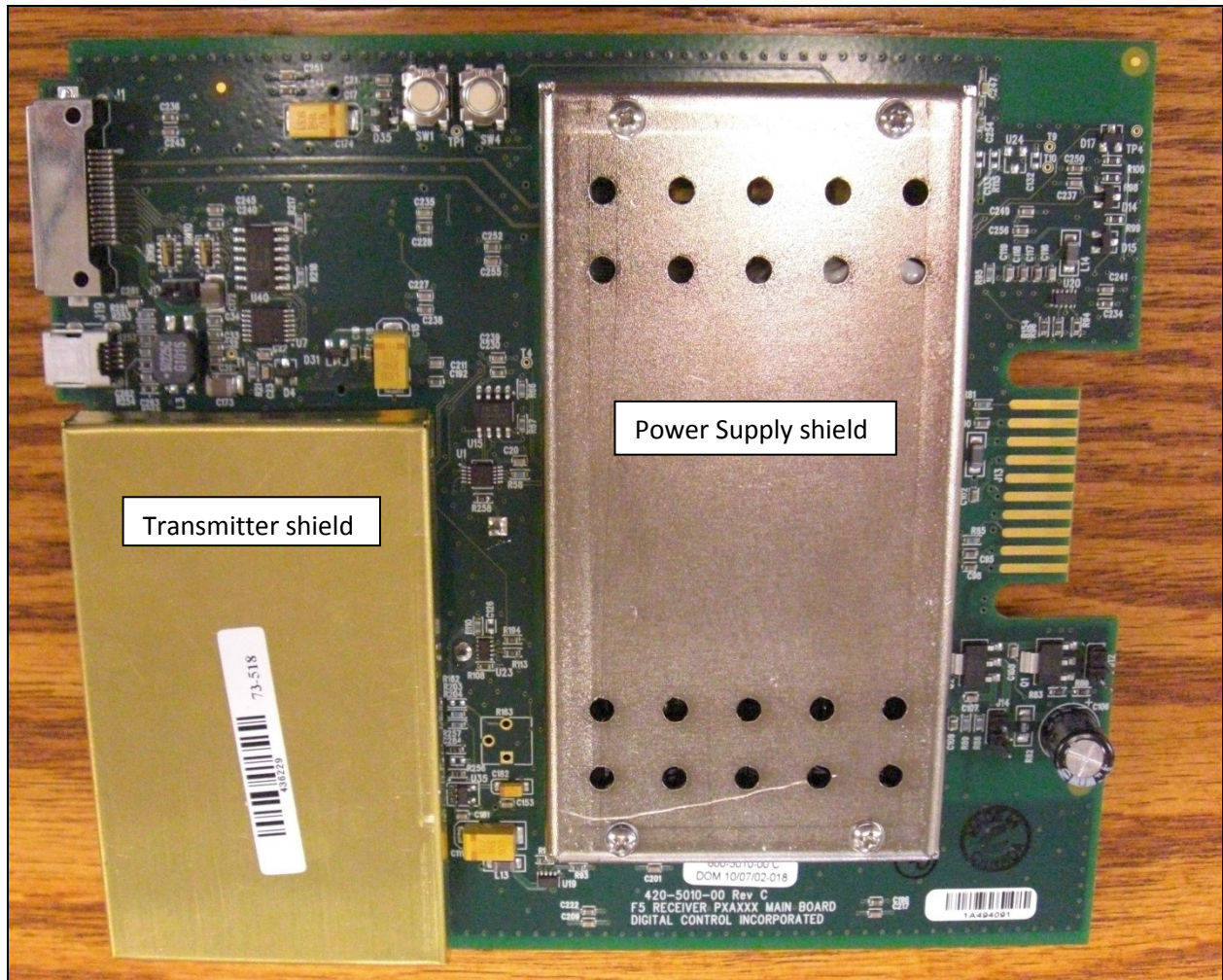
Card cage cover off



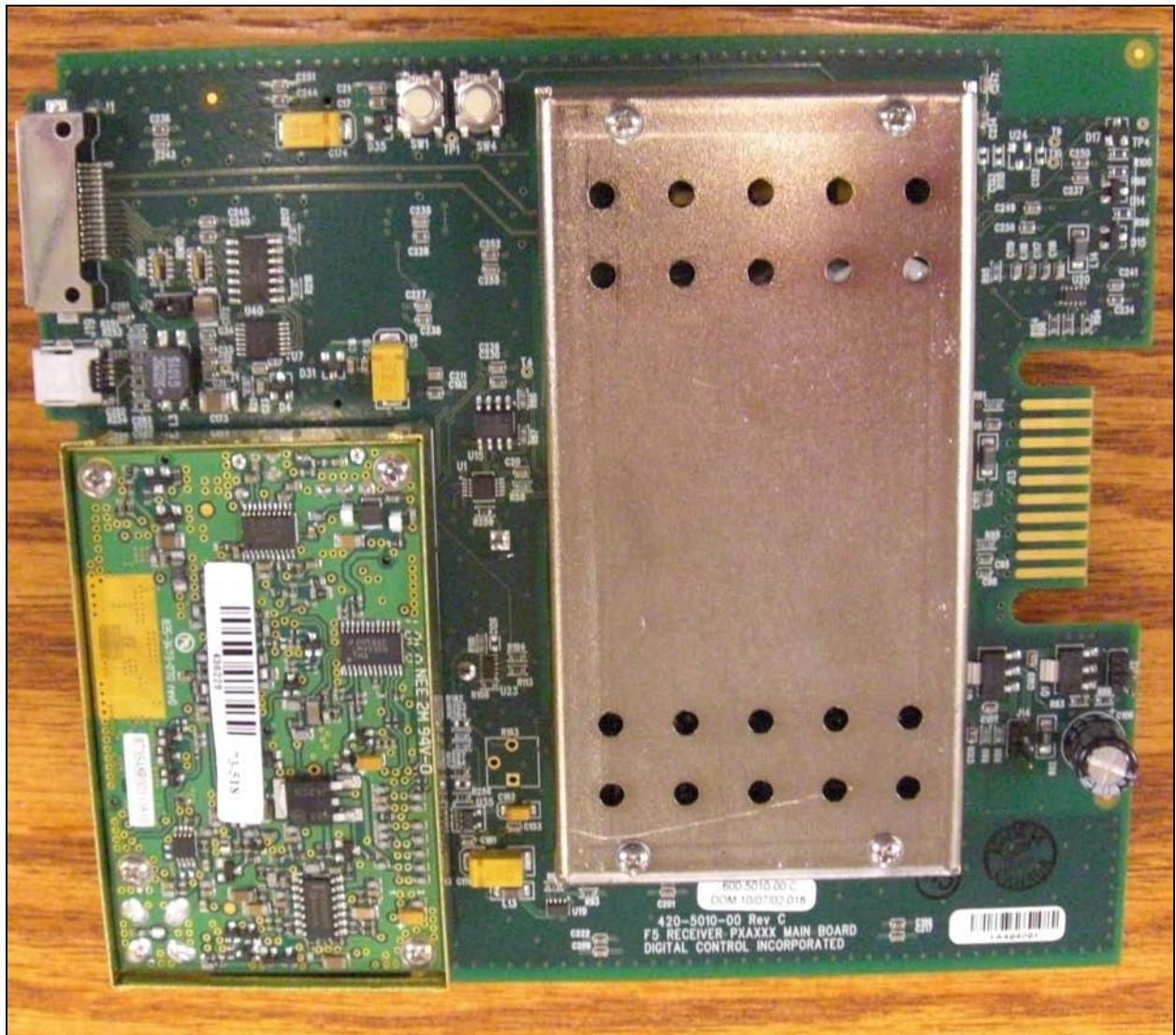
DSP Board - top



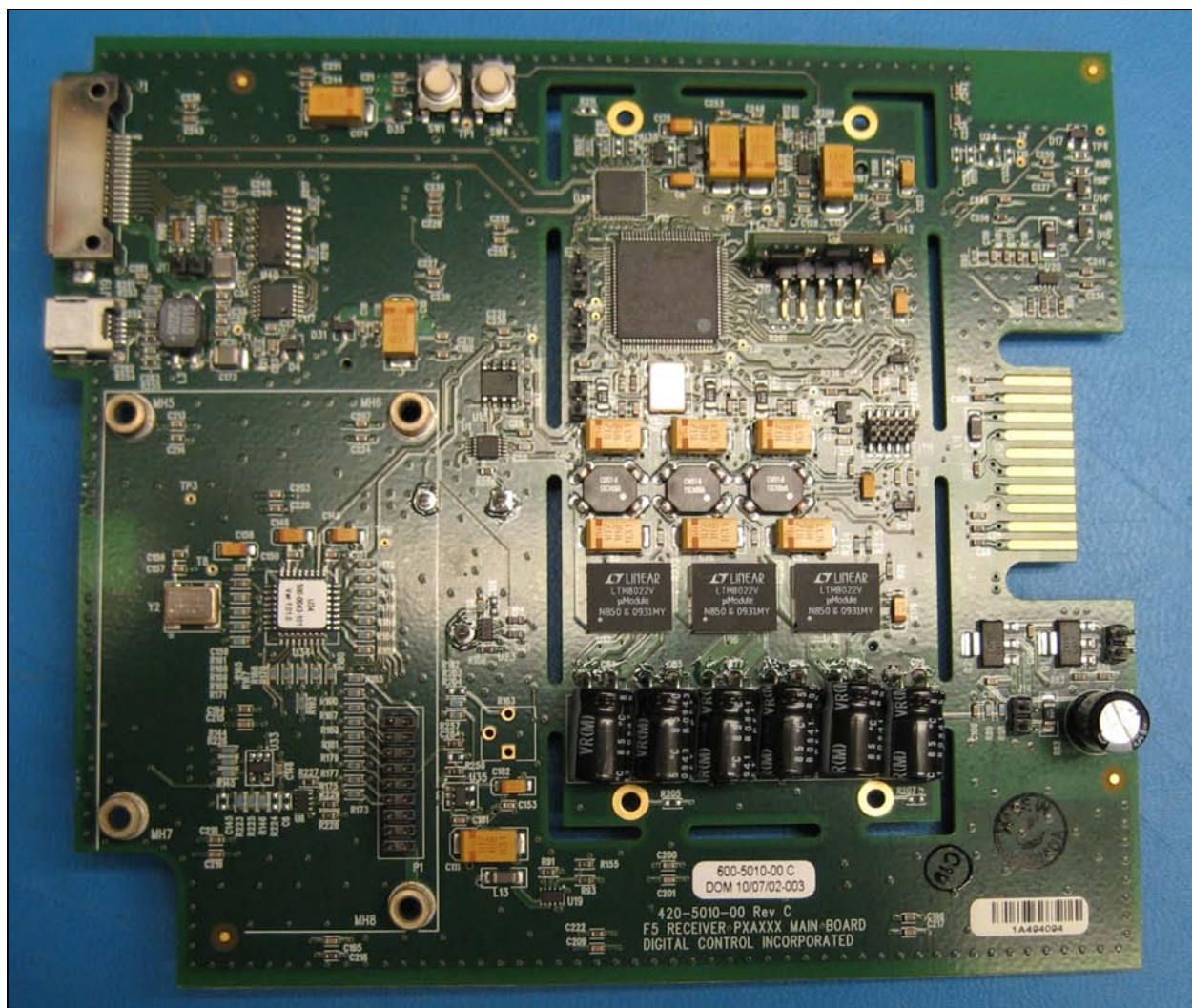
DSP board - bottom



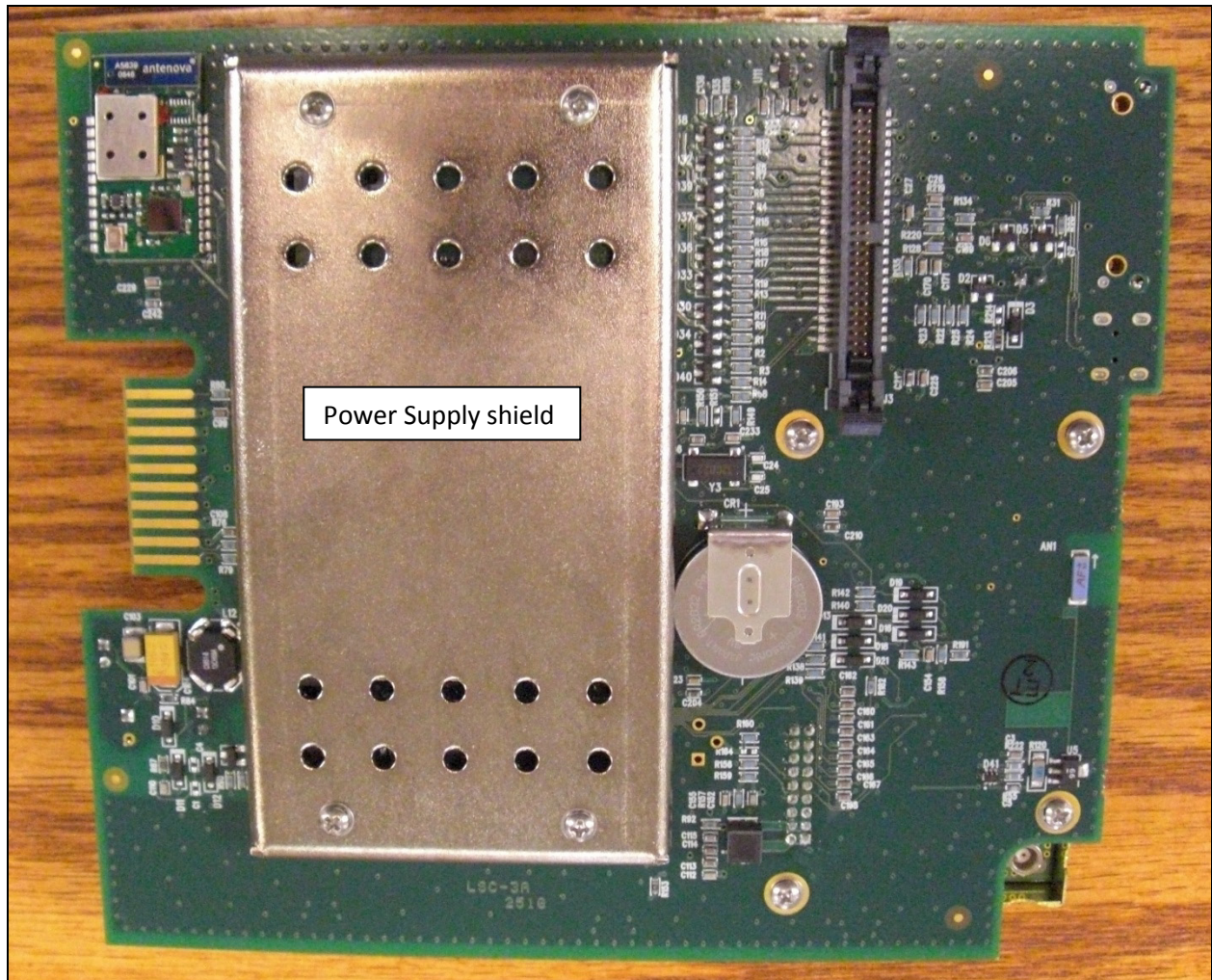
Power supply/telemetry controller board - top



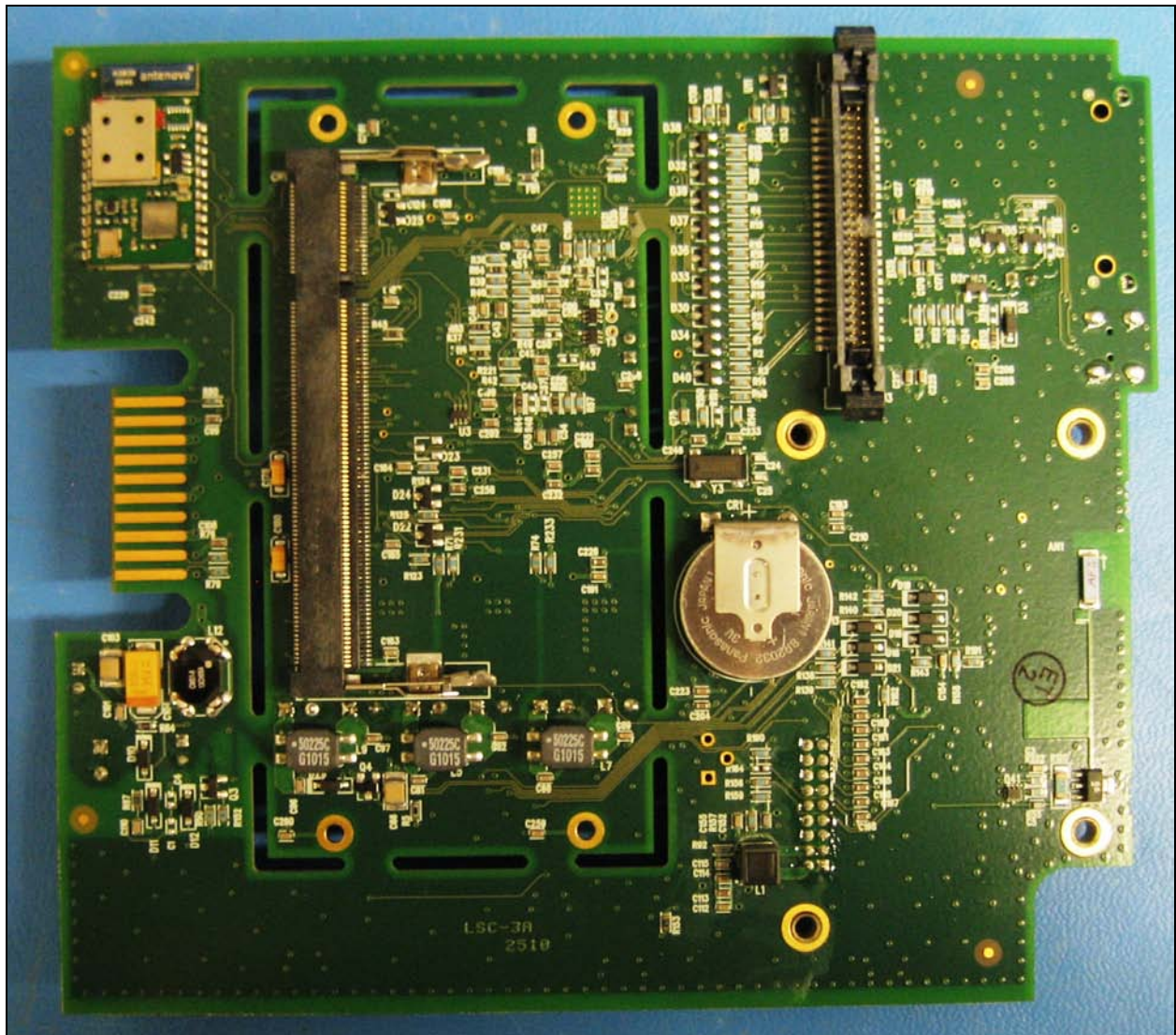
Power supply/telemetry controller board - top with radio shield removed



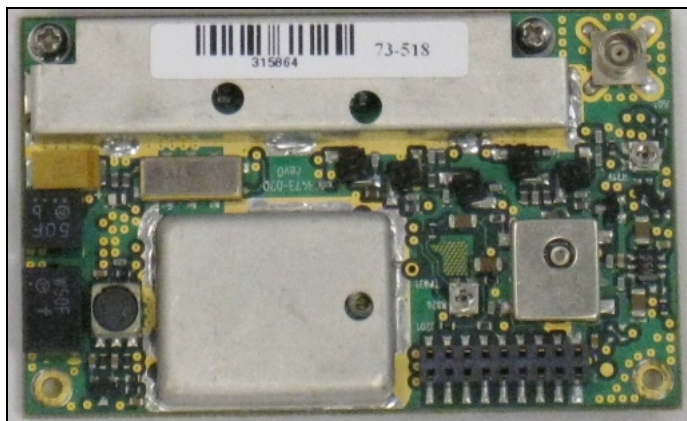
Power supply/telemetry controller board - top with radio and power supply shield removed



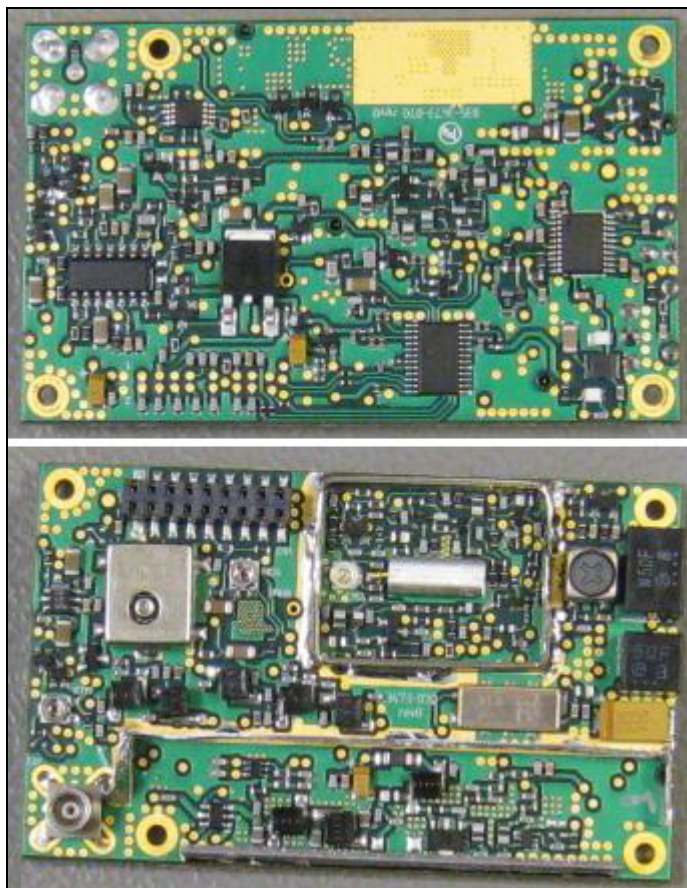
Power Supply/telemetry controller board - bottom



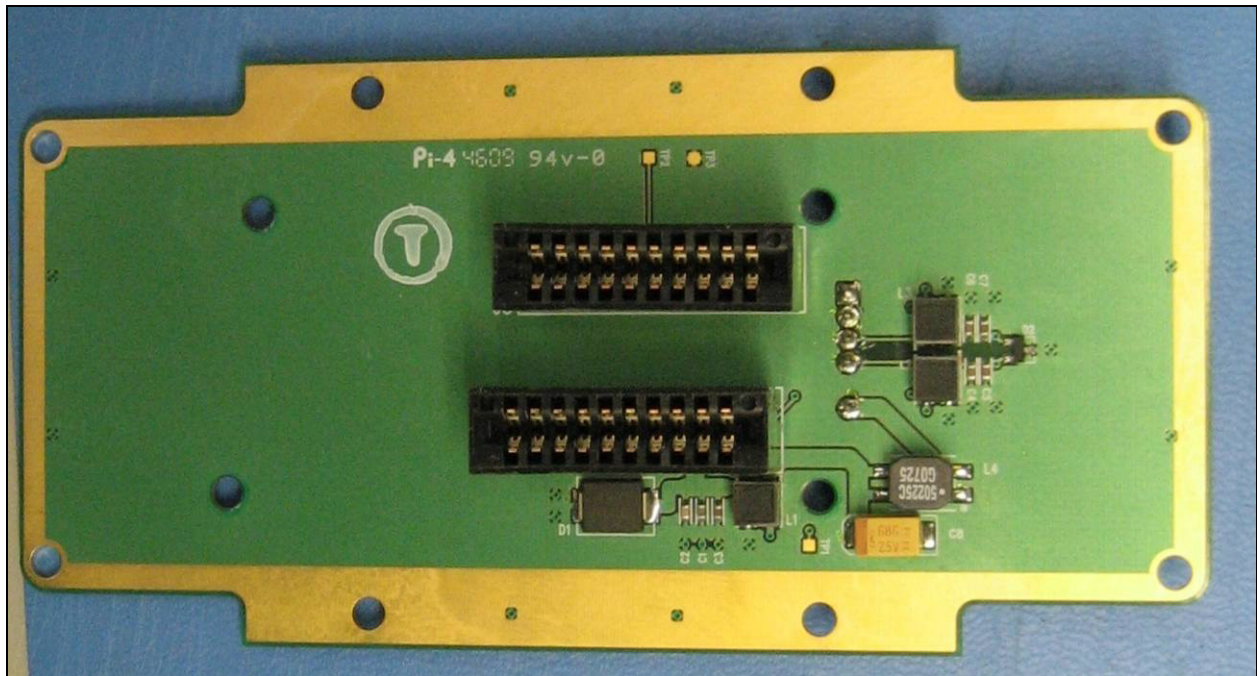
Power Supply/telemetry controller board – bottom power supply shield removed



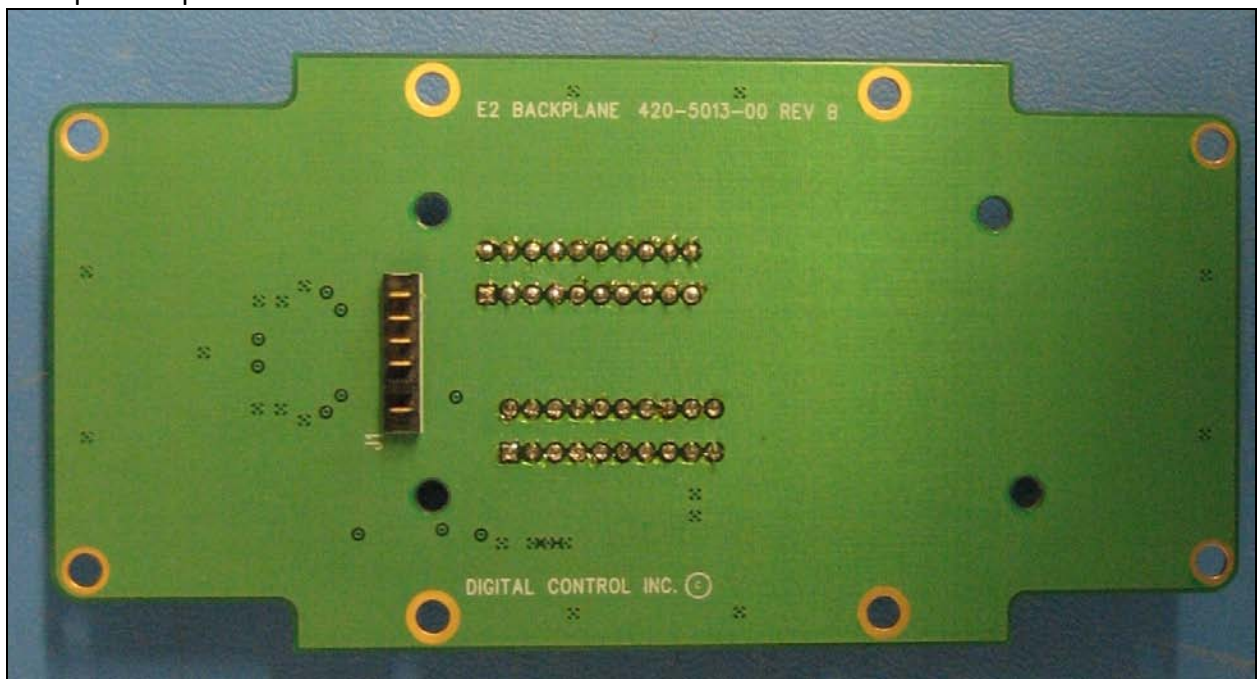
Radio top



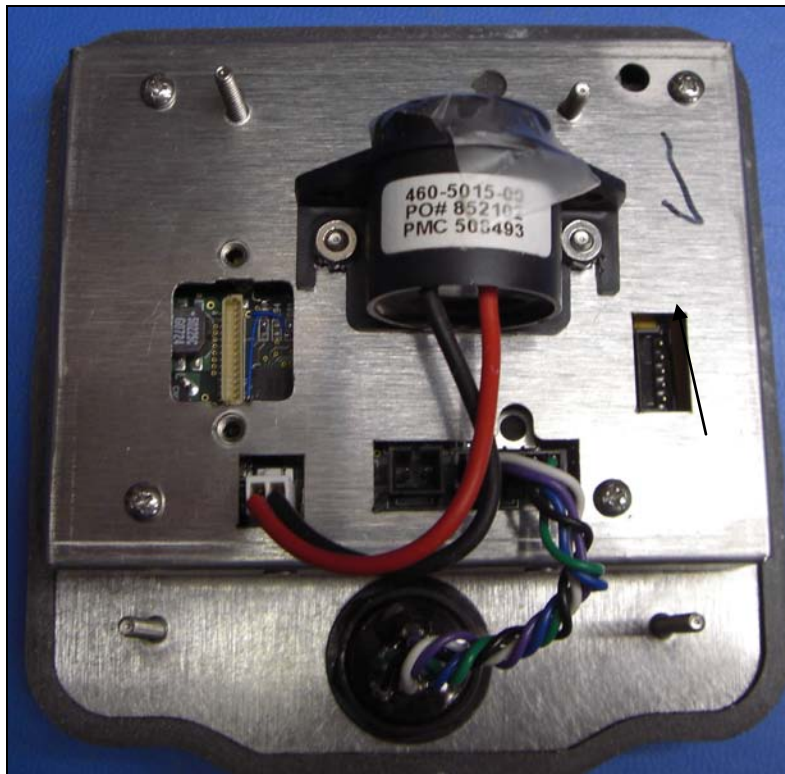
Radio bottom (upper) and top with shields removed (lower)



Back plane top



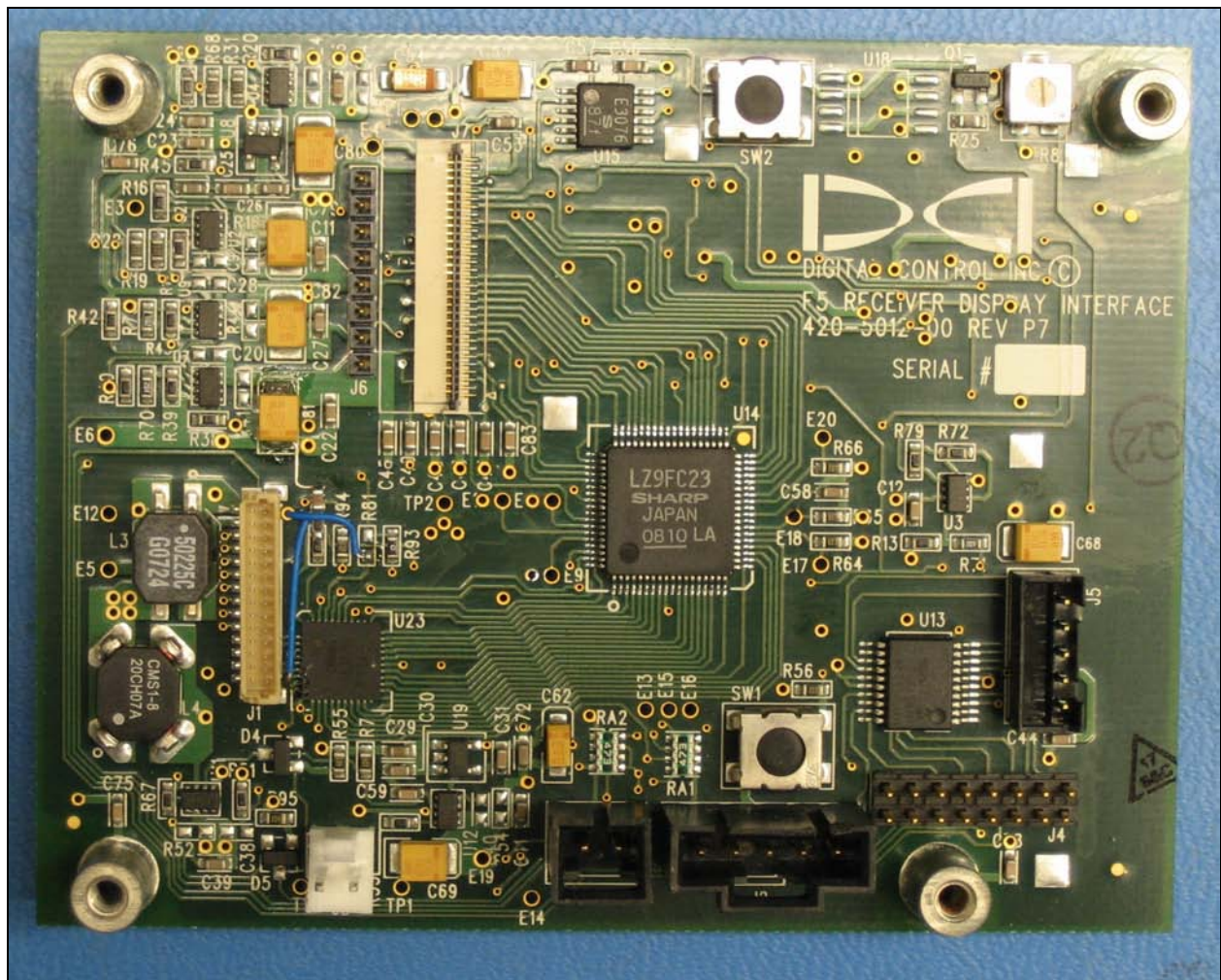
Back plane bottom



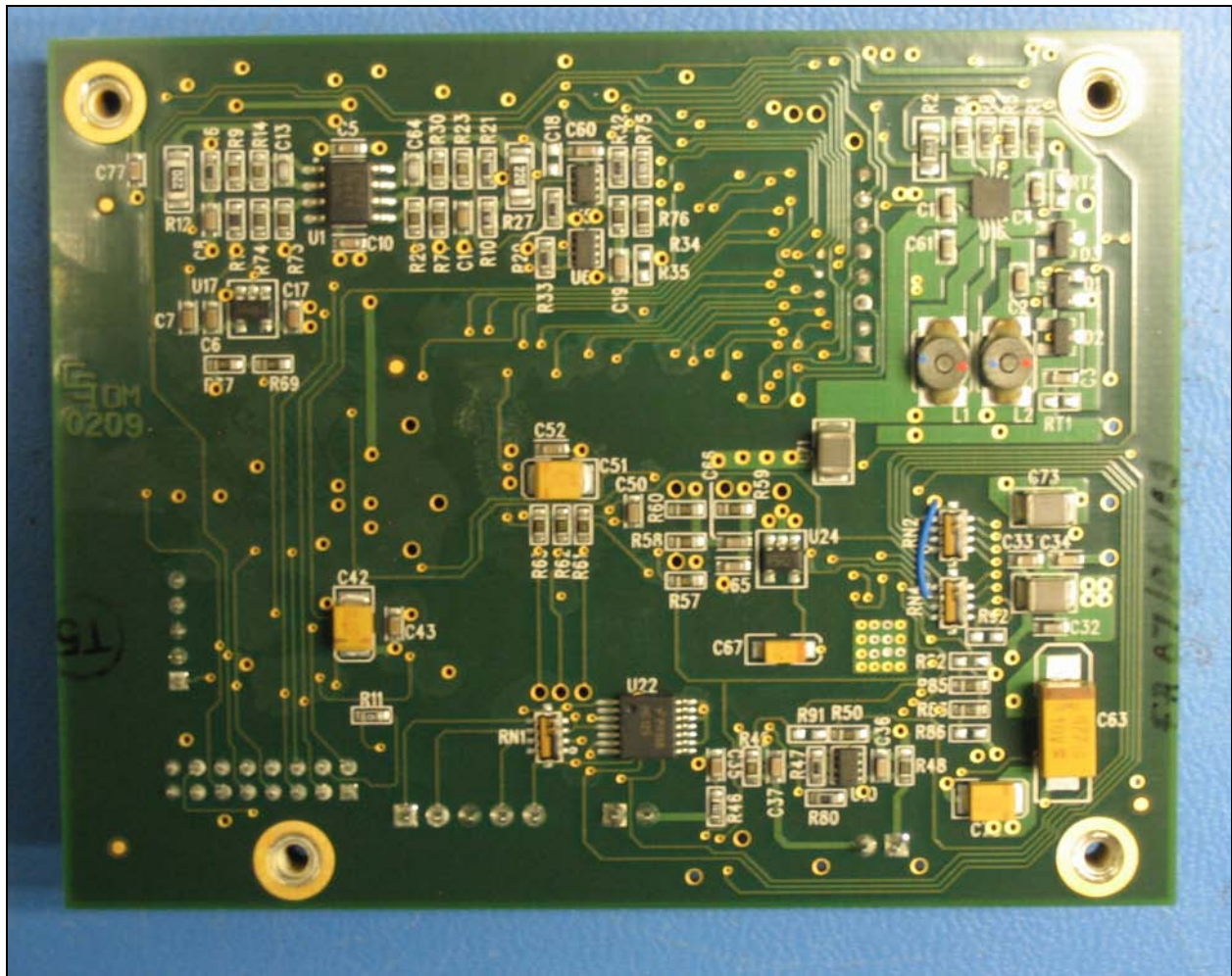
Display assembly



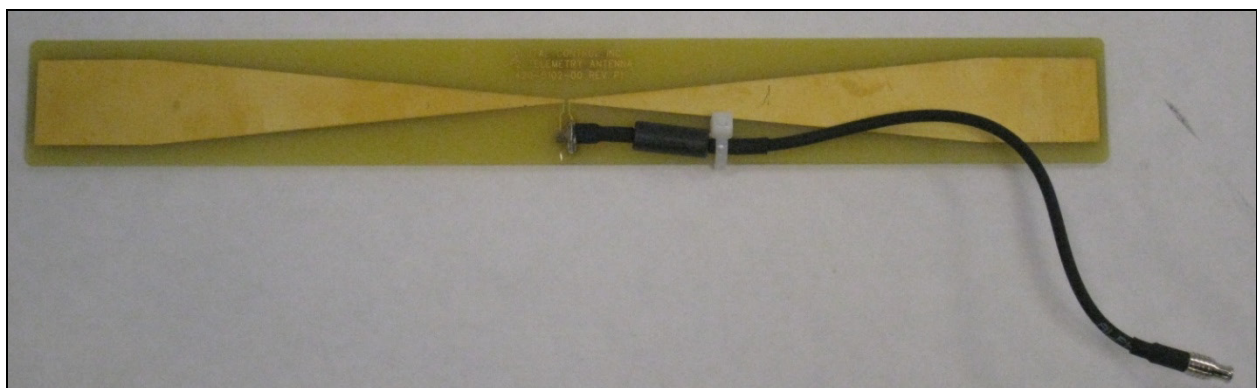
Display assembly cover removed



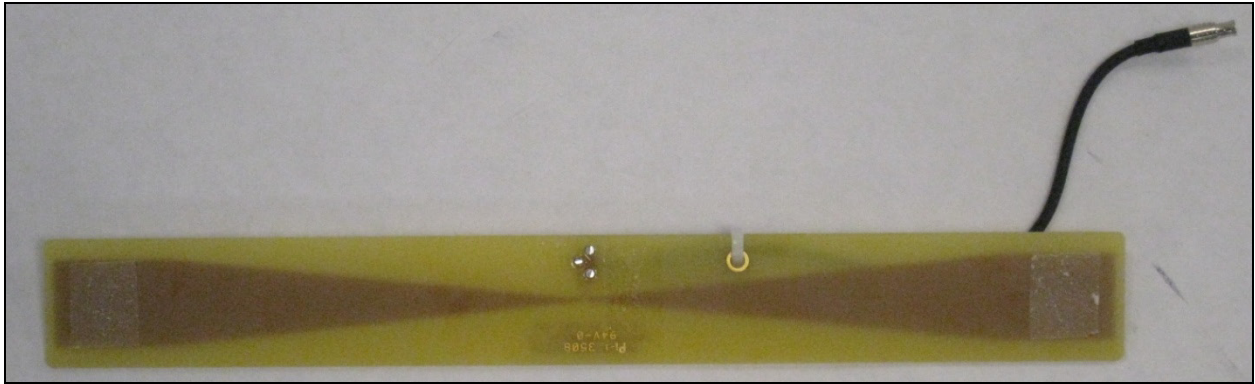
Display board top



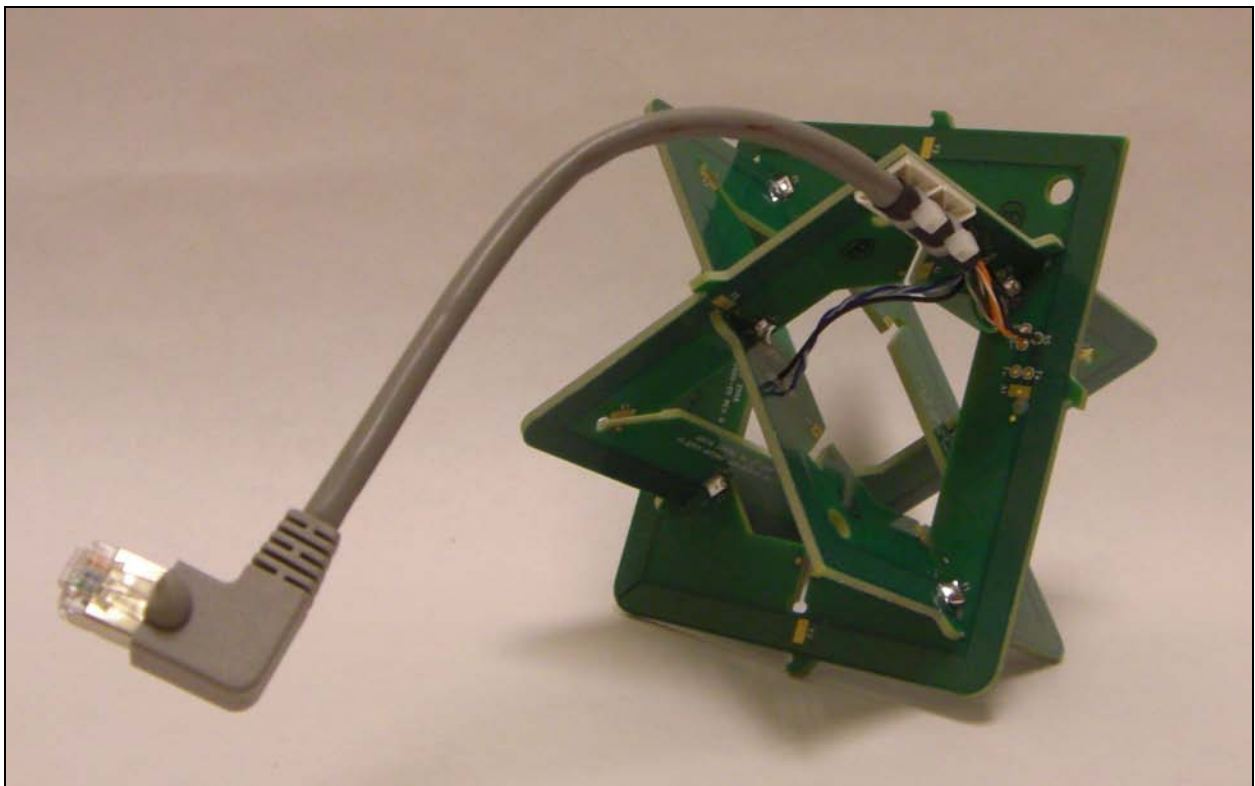
Display board bottom



Telemetry antenna top



Telemetry antenna bottom



KHz receiver antenna cluster