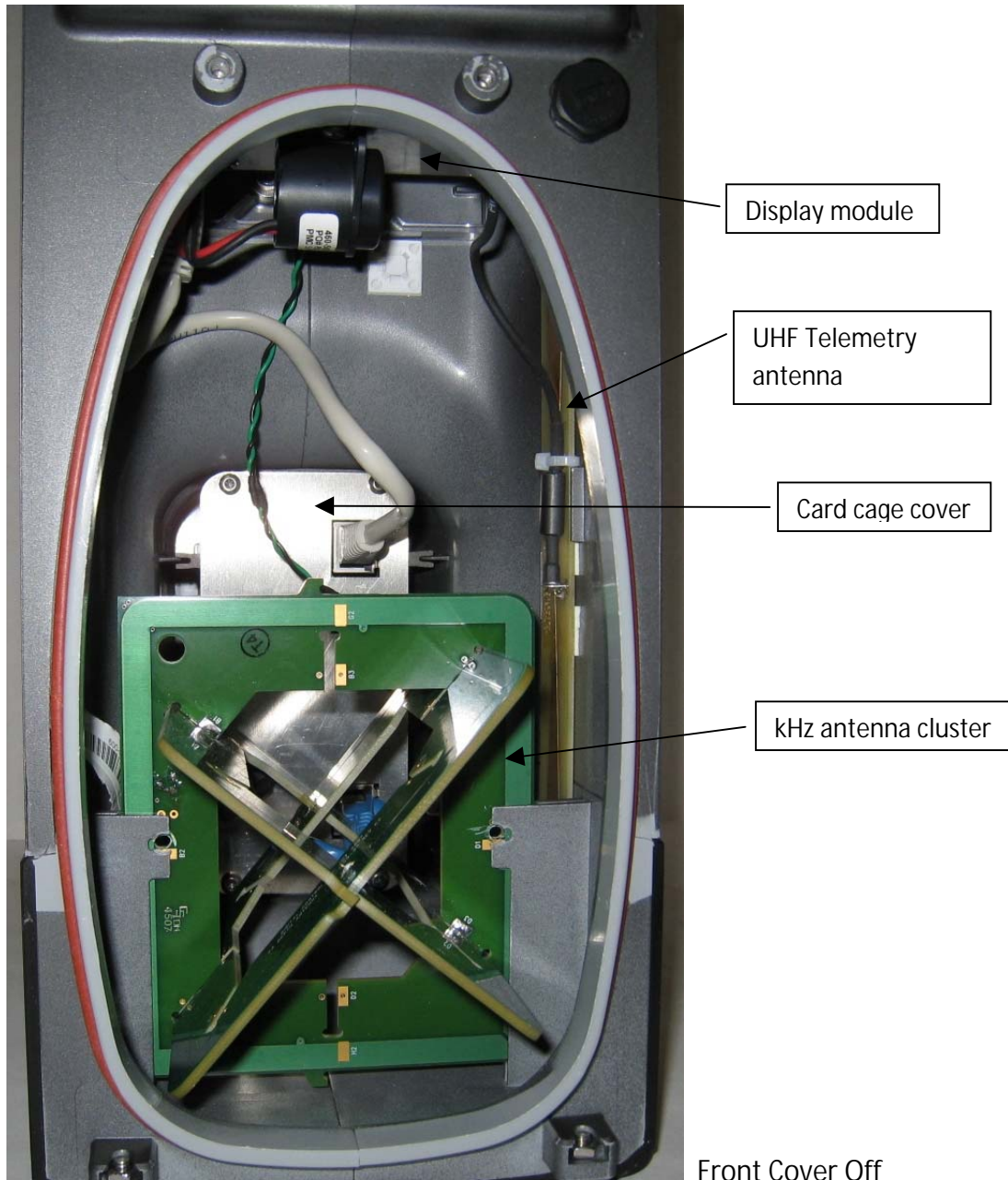
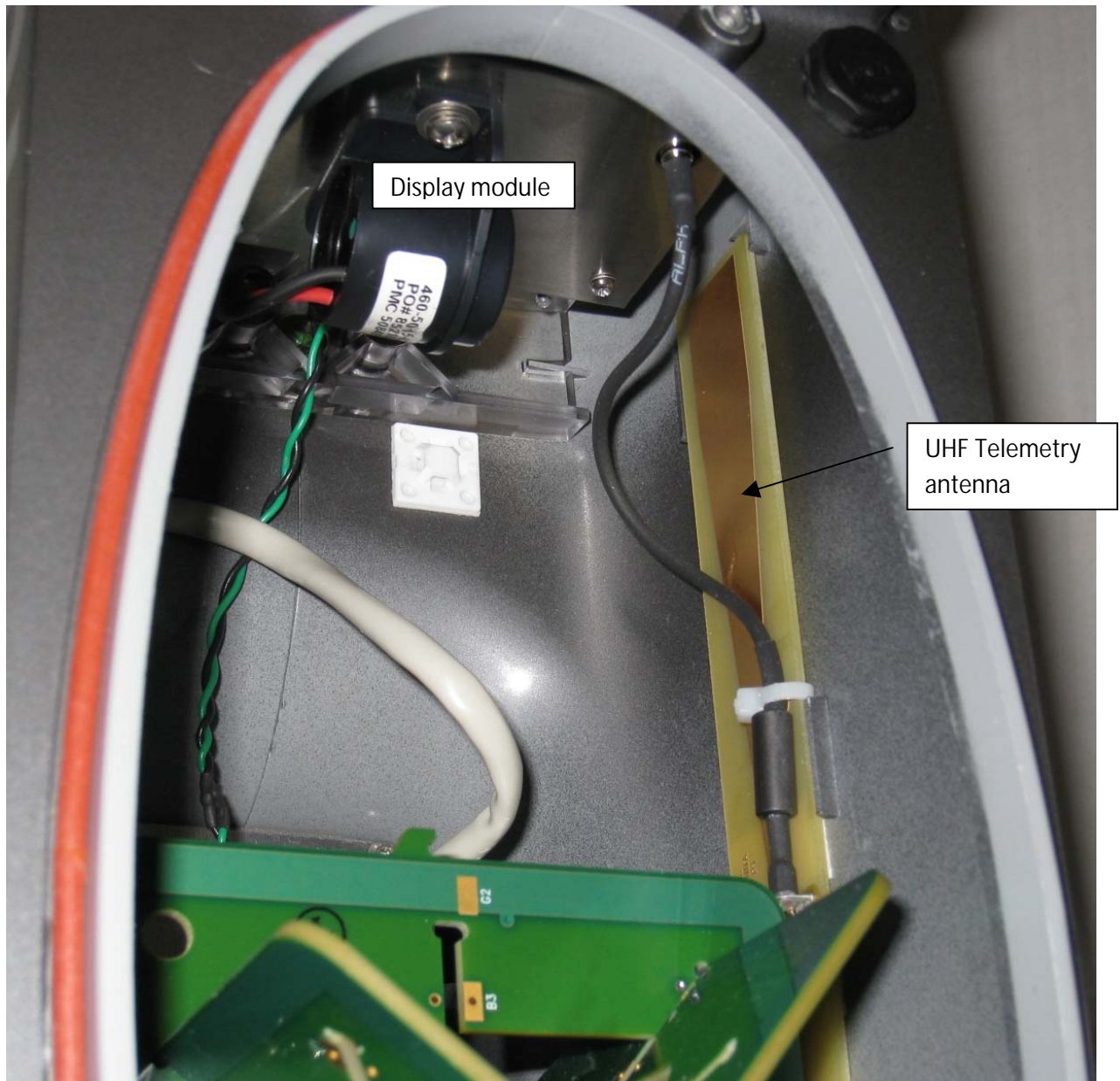
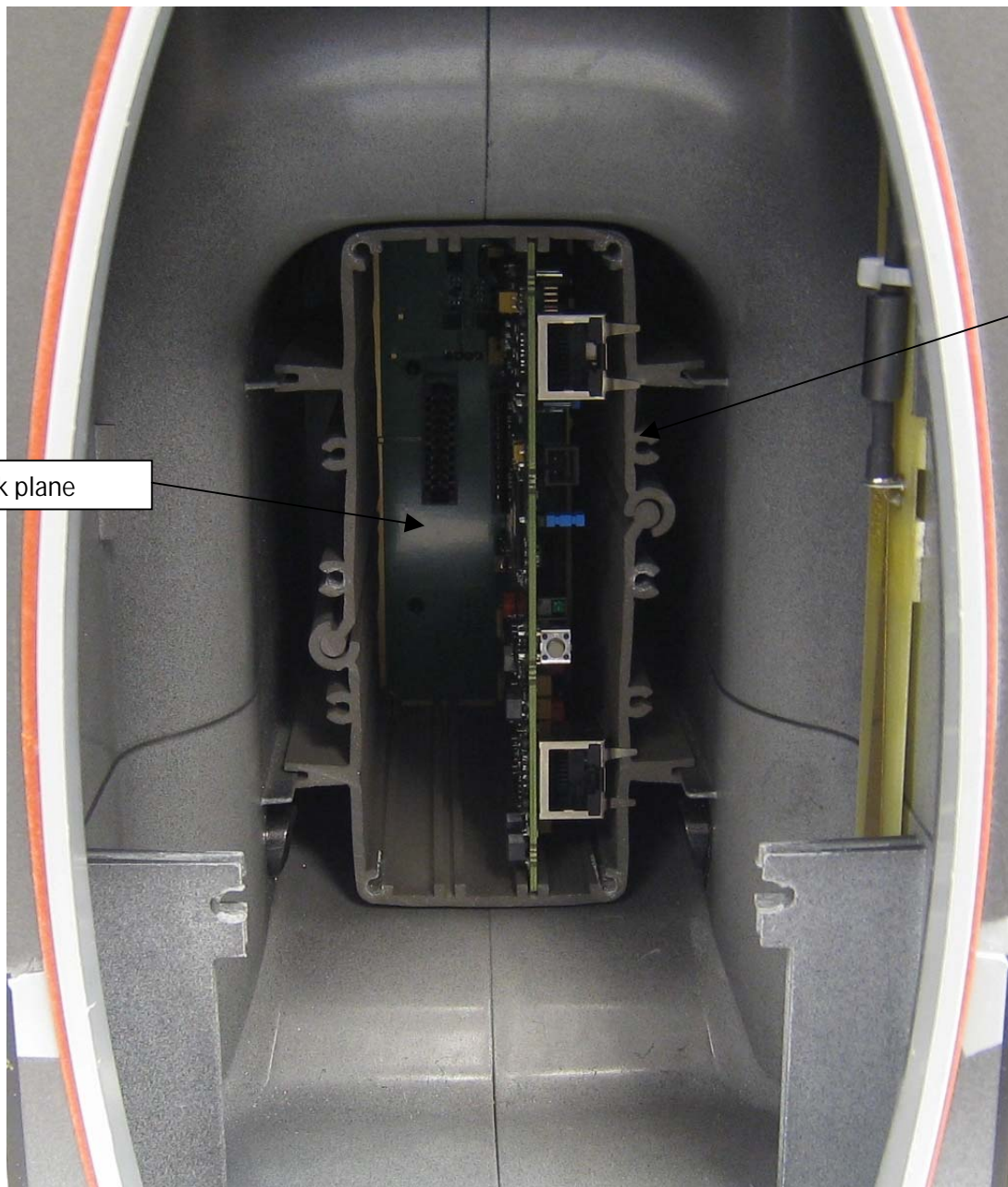


## F2 Receiver Internal Photos





Front cover off showing placement of telemetry antenna and connection to transmitter

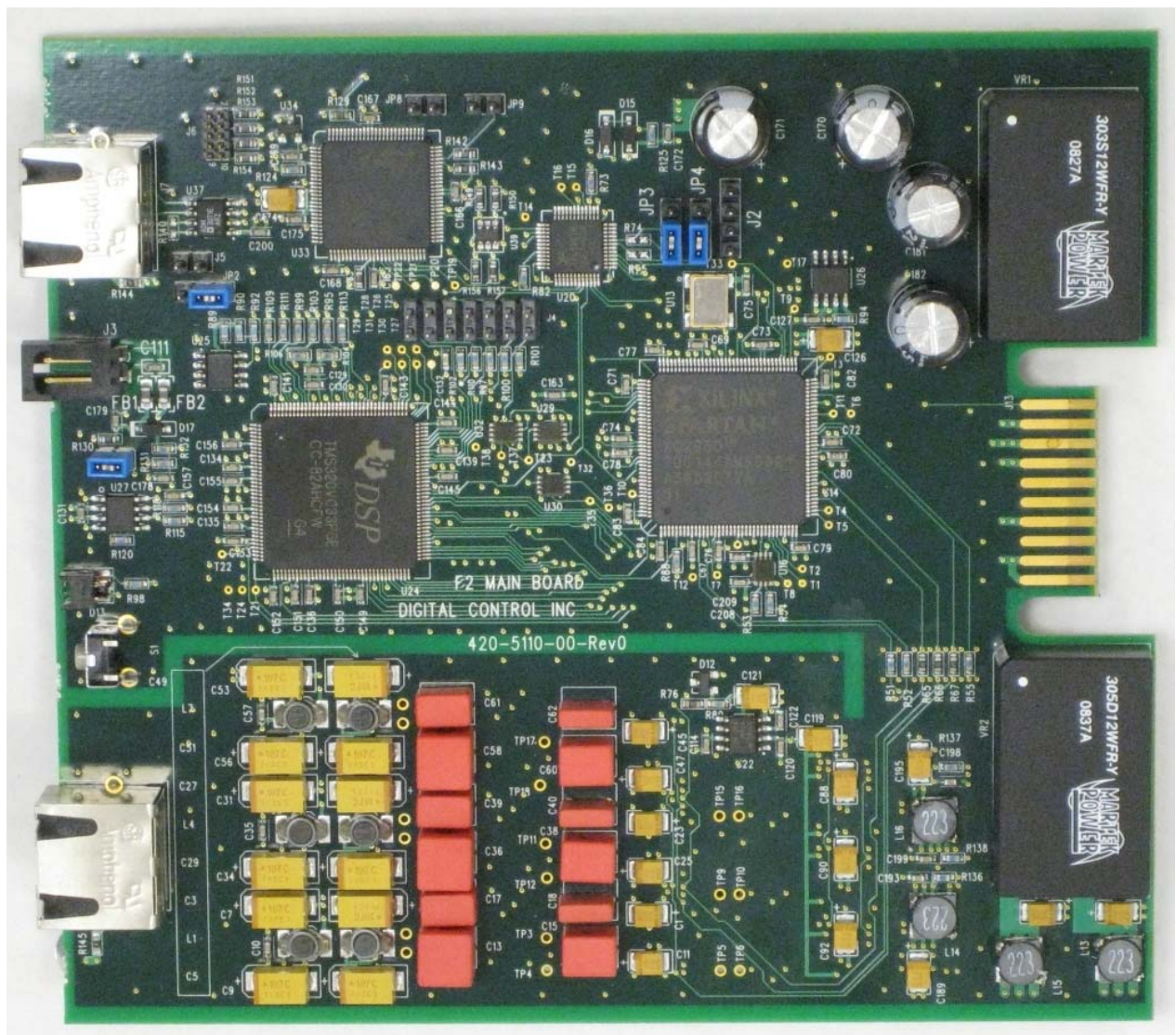


Back plane

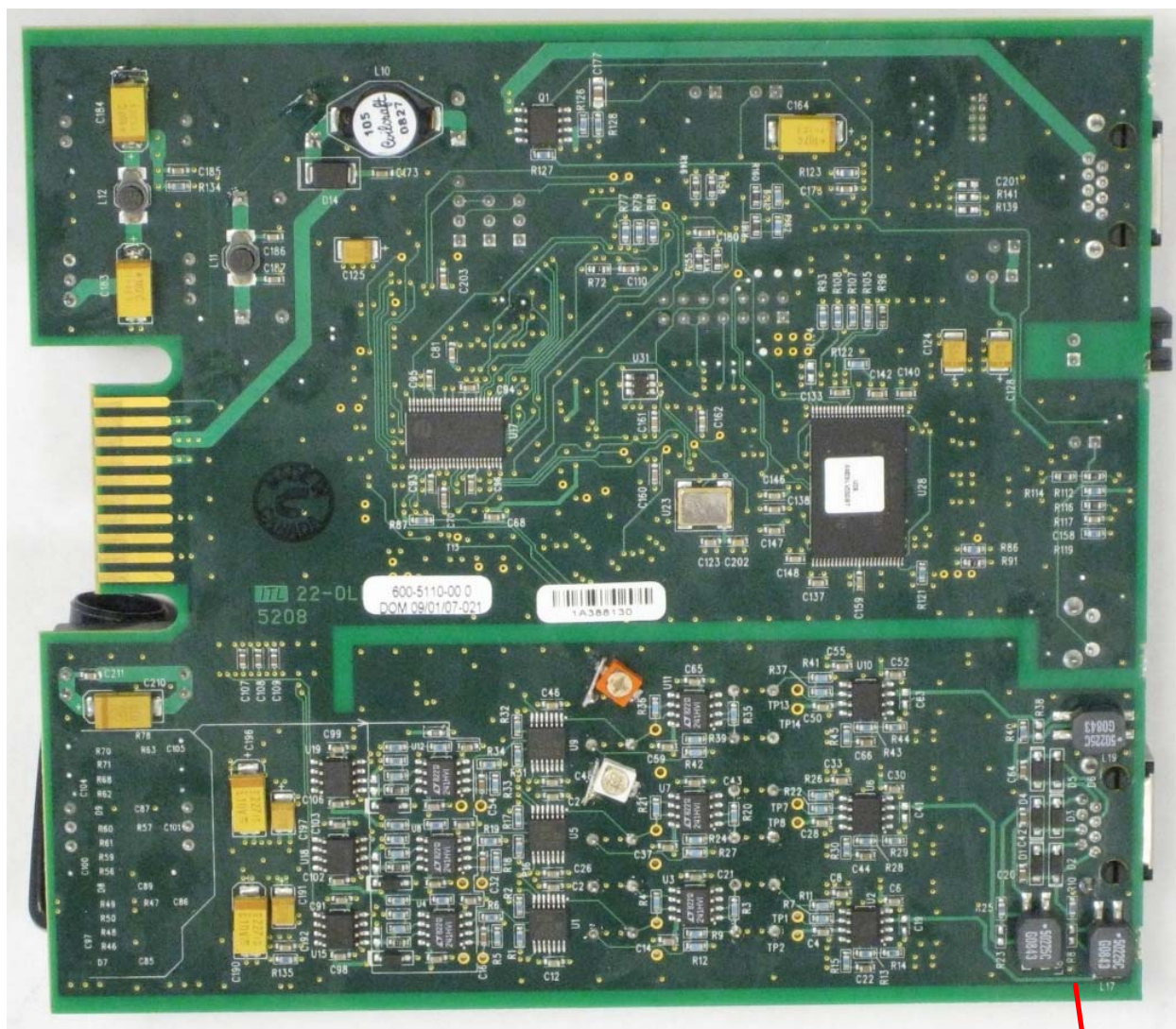
Main board  
card cage

Main board with card cage cover off





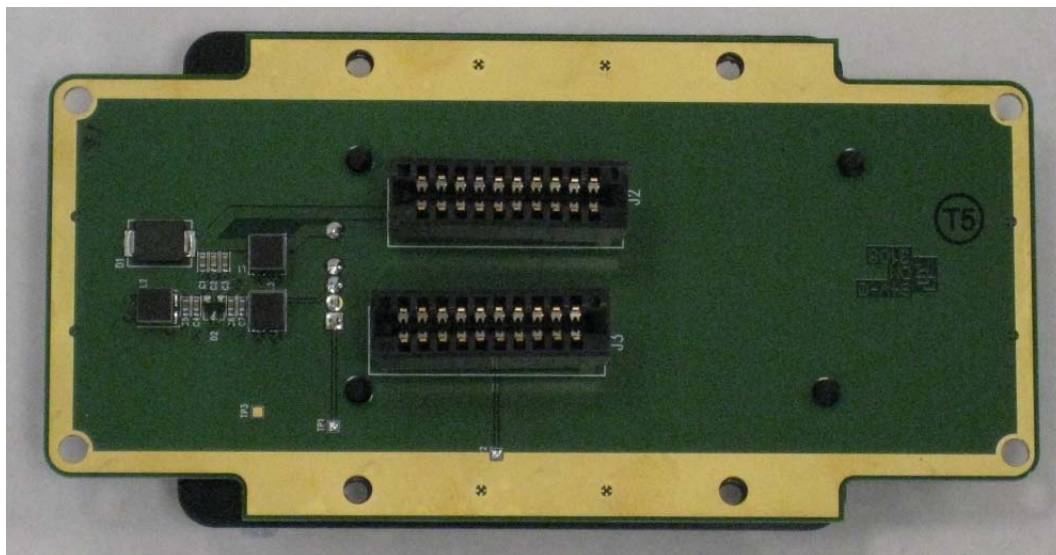
Main board top



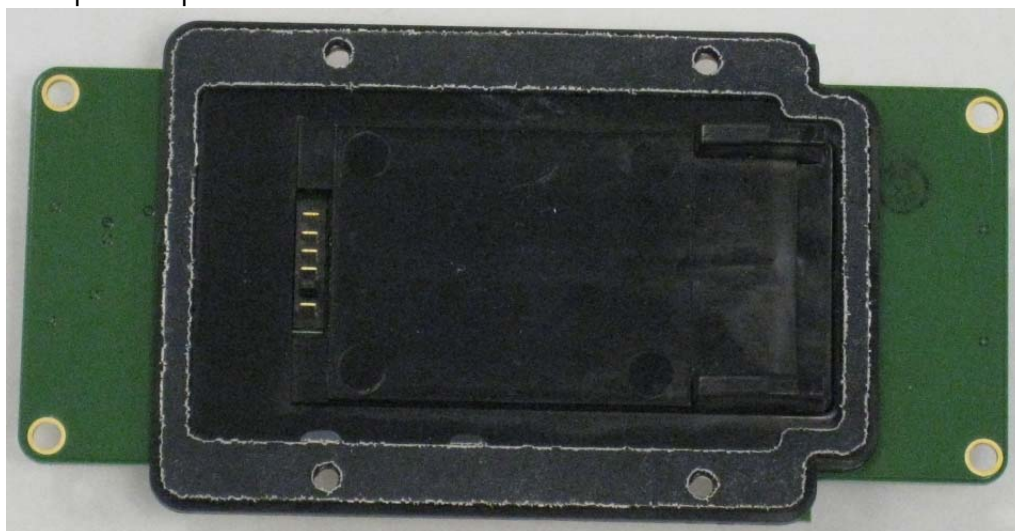
Main board bottom

kHz Receiver

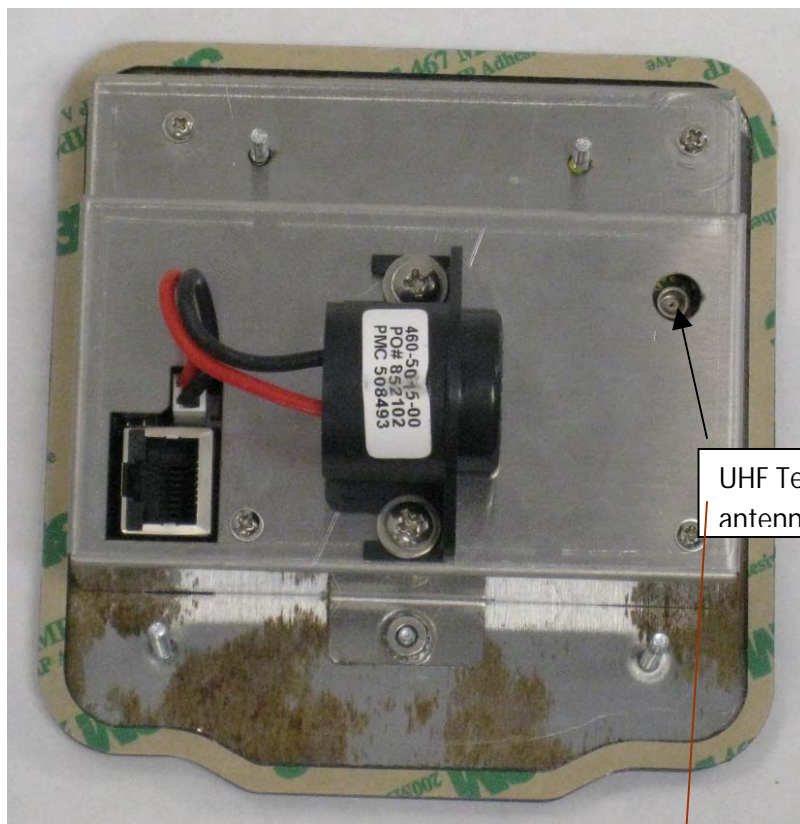




Back plane top



Back plane bottom



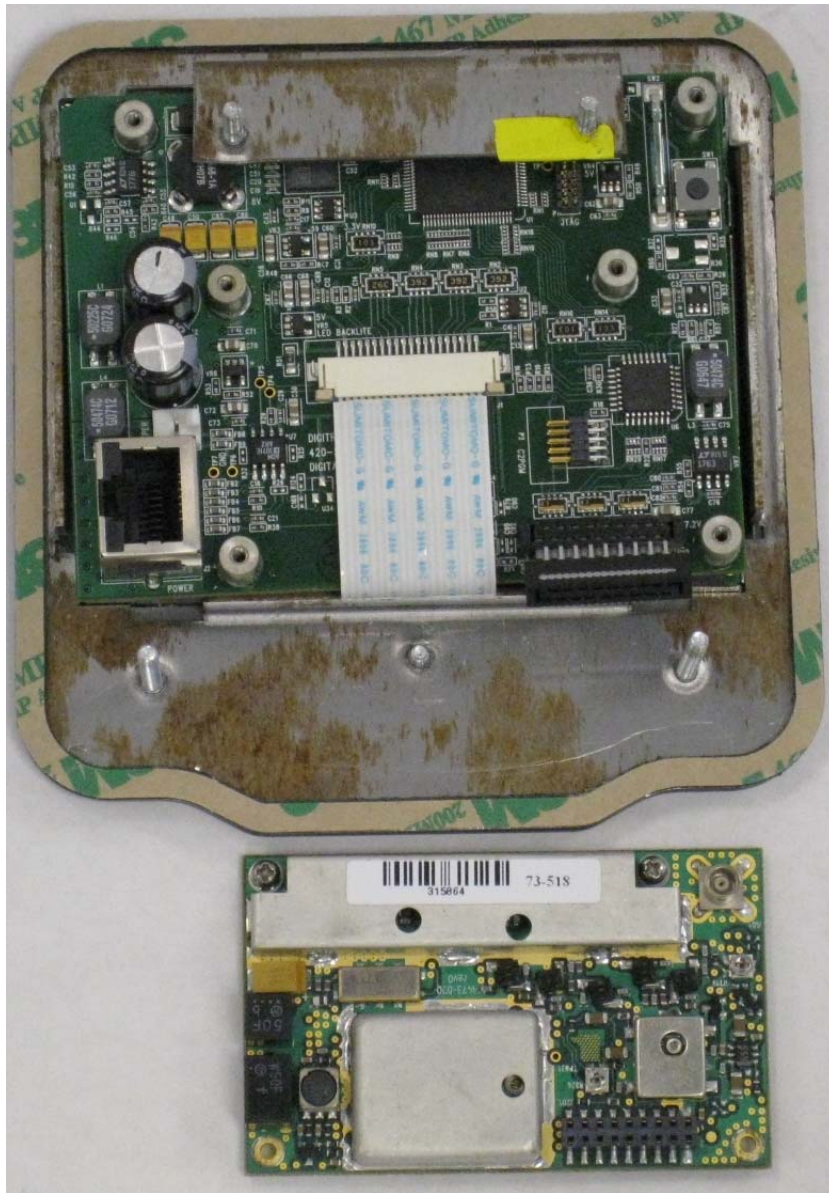
UHF Telemetry  
antenna connector

Display assembly



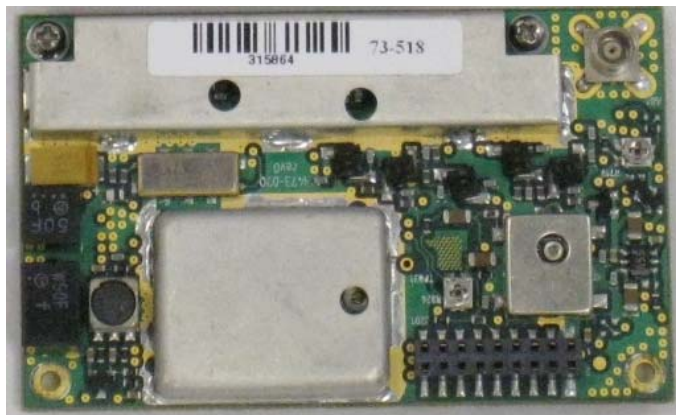
Display assembly cover removed



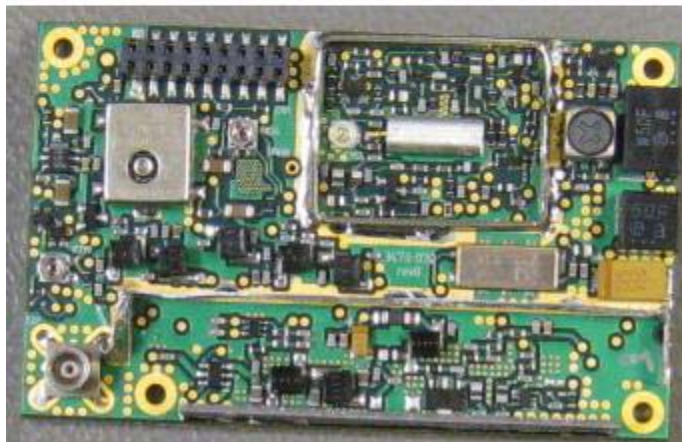
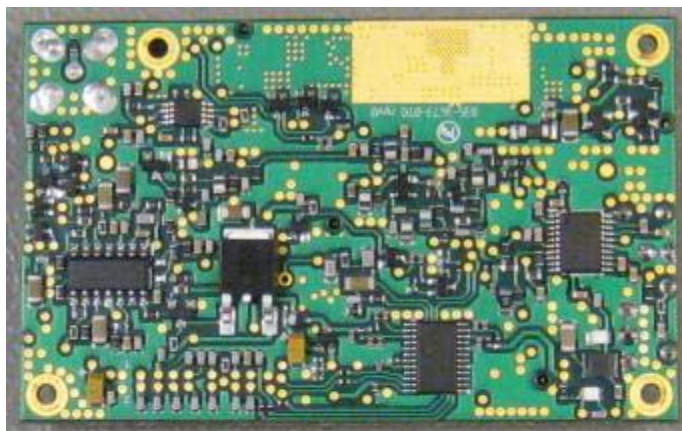


Display assembly radio removed

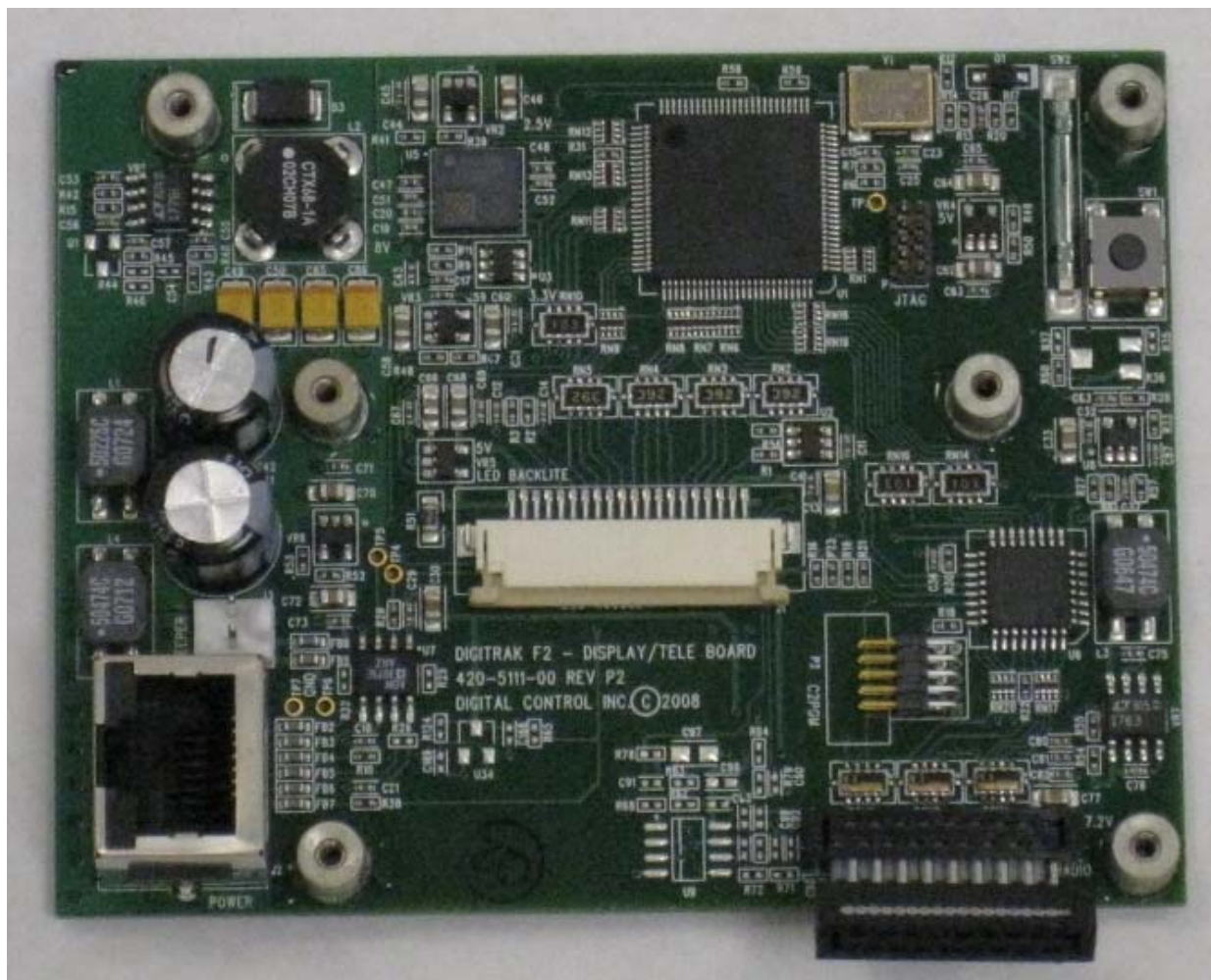




Radio top

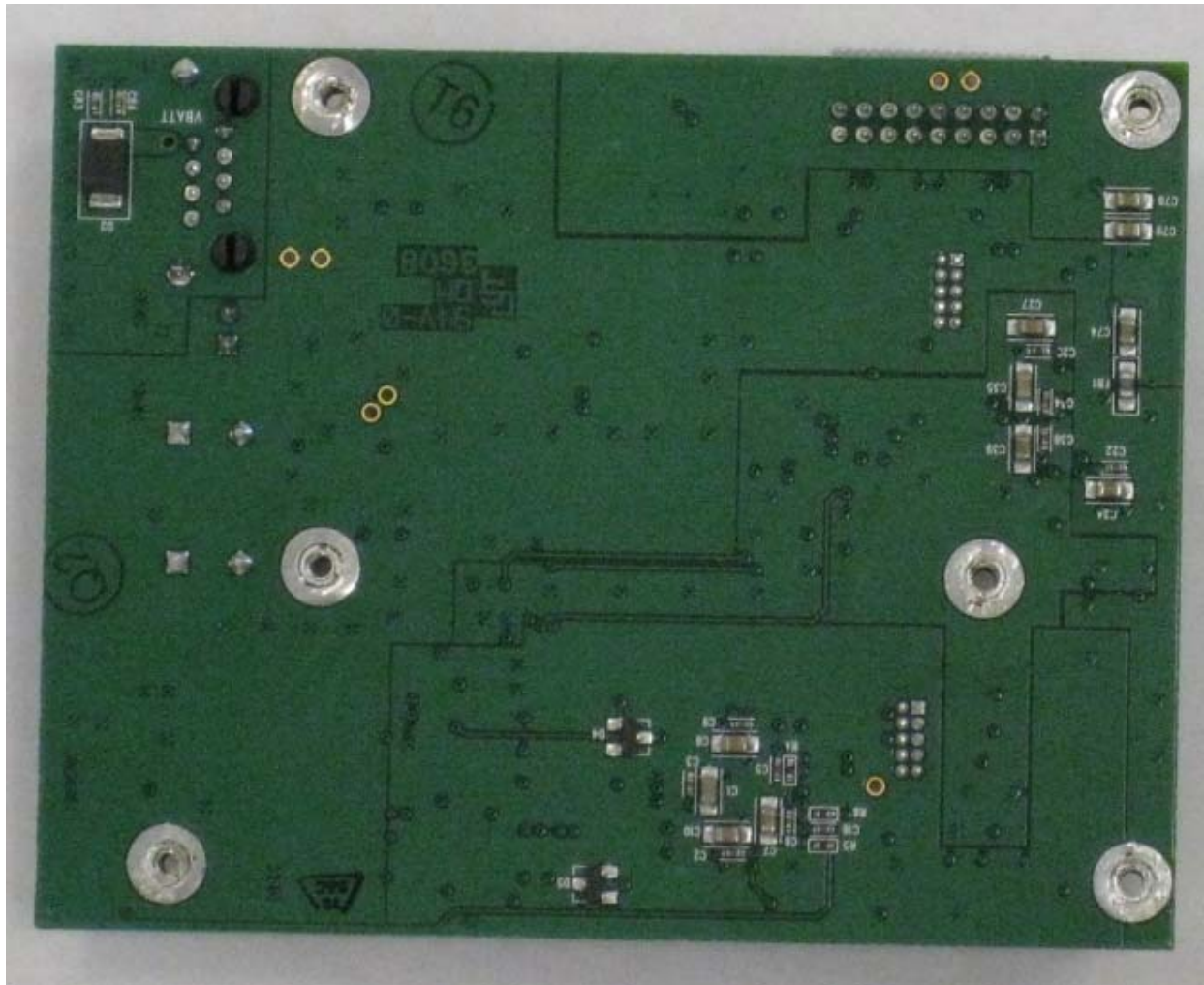


Radio bottom (upper) and top with shields removed (lower)



Display and telemetry controller board top

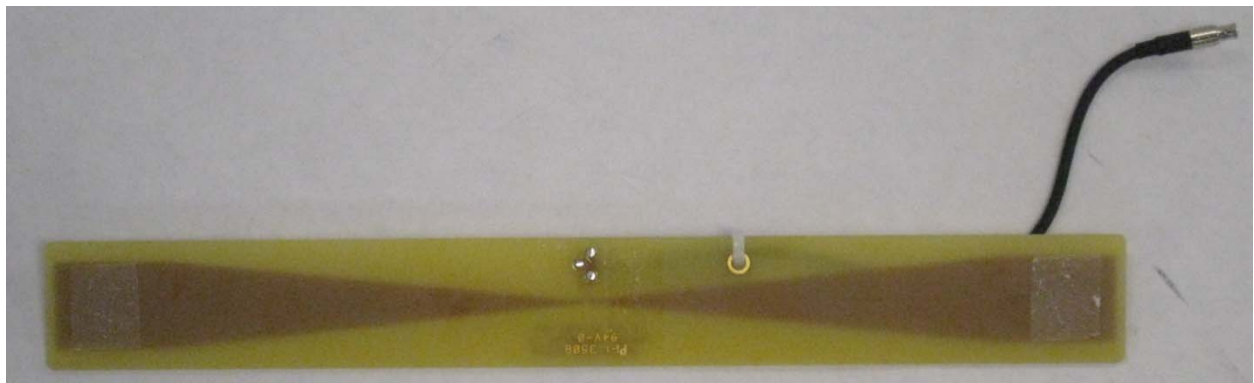




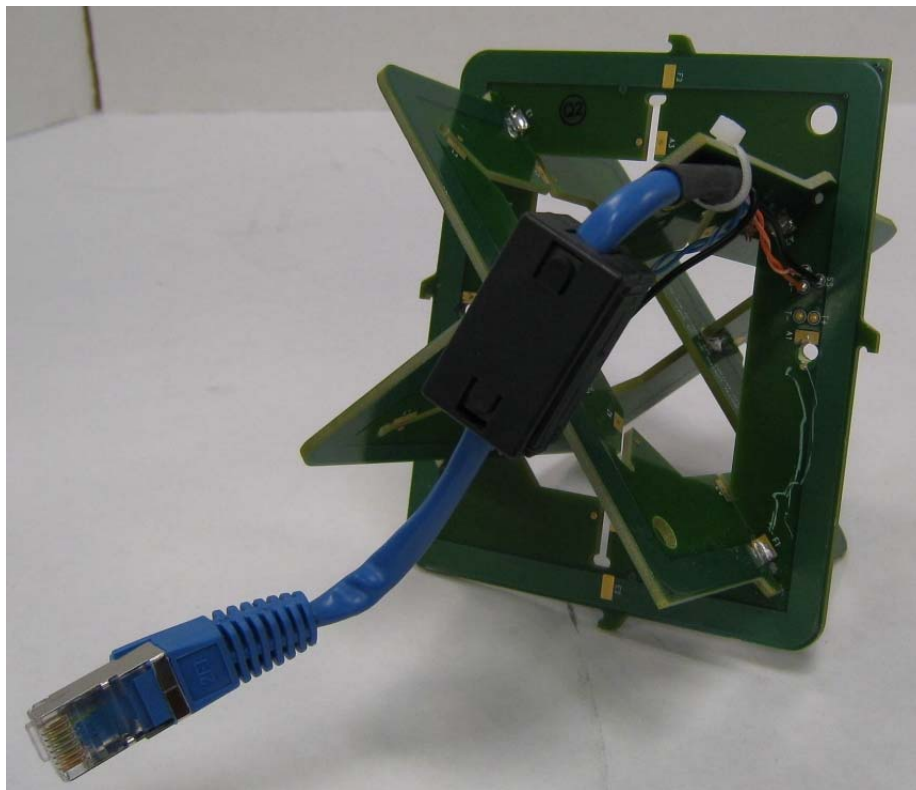
Display and telemetry controller board bottom



UHF Telemetry antenna top



UHF Telemetry antenna bottom



KHz receiver antenna cluster