

EX-03124

TOOLING
RELEASE

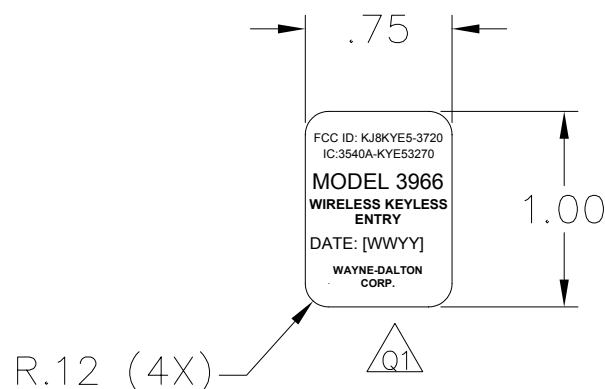
DATE

Q1 REMOVED P/N
TEXT FROM PART
3/20/03 GGC

BY:

①

CHANGES

R & D RELEASE TO
PRODUCT
ENGINEERING

DATE

BY:

②

CHANGES

NOTES:

1. "[WWYY]" IS DATE CODE, WHERE "WW" IS THE WEEK OF THE YEAR 01-52, AND "YY" IS TWO DIGIT YEAR (E.G. 03 FOR 2003).
USED FOR KEYLESS ENTRY NO. KEP3, MODEL 3966

INFORMATION IN THIS DRAWING AND ORAL INFORMATION REGARDING THIS PART OR THE SYSTEM IN WHICH IT IS USED IS CONSIDERED CONFIDENTIAL TO THE WAYNE DALTON CORP. THIS PRINT IS ONLY TO BE USED FOR THE PURPOSES OF QUOTATION AND ANY DISCUSSION OF FUNCTION OF THE PART OR THE SYSTEM IN WHICH THIS PART IS USED IS TO BE WITHIN THE INTERNAL COMMUNICATIONS OF THE QUOTING COMPANY AND WAYNE DALTON CORP.

REFERENCE PART: _____

- ☐ REF PART IS REPLACED IN PRODUCTION & SERVICE
☐ REF PART IS REPLACED EXCEPT FOR SERVICE
☐ REF PART IS ONLY SIMILAR & NOT REPLACED
☐ MAKE THIS PART FROM REFERENCE PART
☐ COMMON TOOLING WITH REFERENCE PART
☐ CHANGE TO REFERENCE PART

FILE NAME
DRWING#REV.DWG3395 ADDISON DRIVE
PENSACOLA, FLORIDA 32514
(850) 474-9890

DRAWN

DATE

NAME

3/05/03

G. CARLTON

CHECKED

APPR.

TOLERANCES
UNLESS SPECIFIED
.0 ±.015
.00 ±.010
.000 ±.005
ANGLE ±1/2°PROJECT
OP/ACCESS/KEP3 5BTNPER UNIT 1
PER YEAR

DECAL, FCC ID, KEP3, 372 MHz, 5-BUTTON

ASSY(S)- EX-03030

MATERIAL: 2.3 MIL WHITE T/C POLYPROPYLENE

FINISH: WHITE BACKING WITH BLACK LETTERS

CODE

PLOT
SCALE

SCALE

SIZE

O

1/1

A

DRAWING NO.

REV

EX-03124

Q1