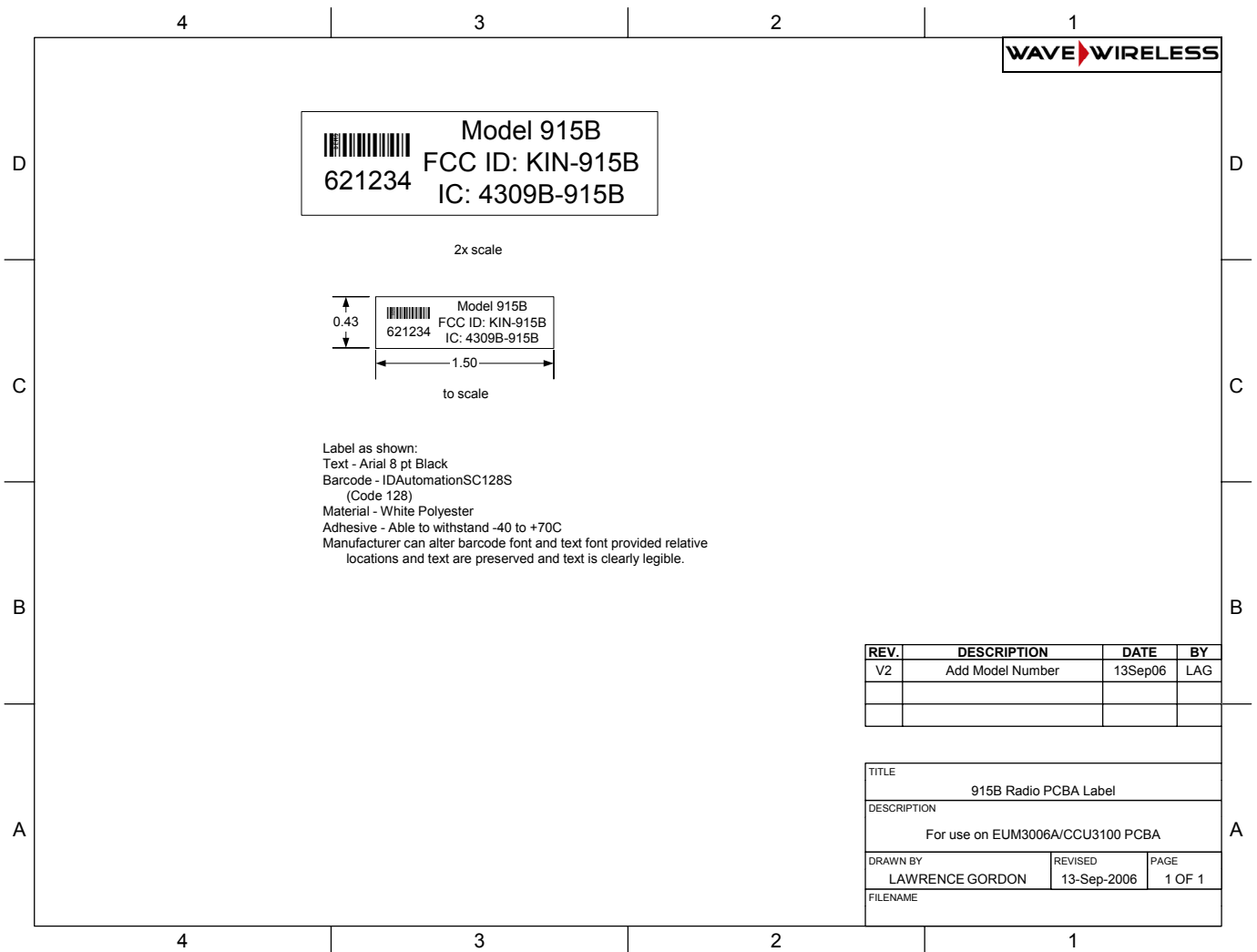


13 Sep 2006

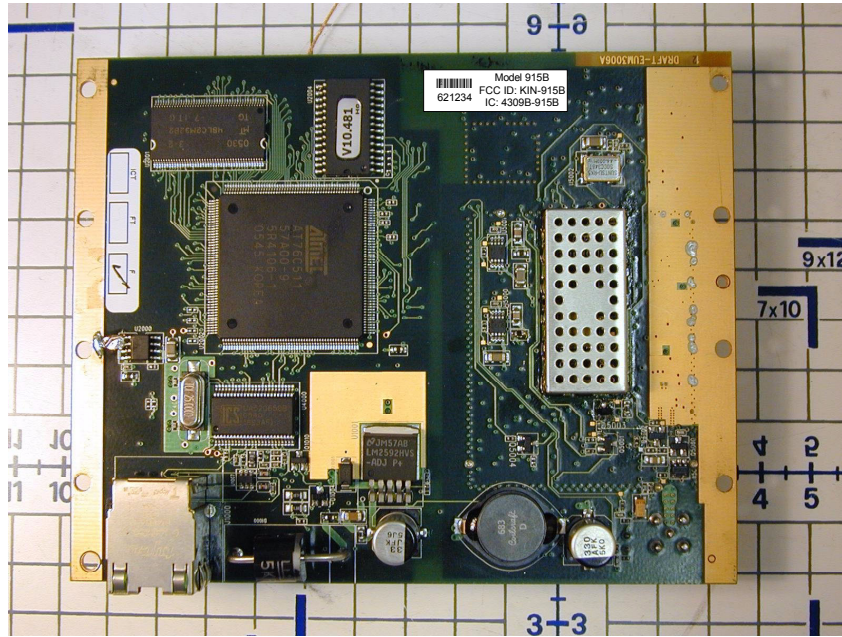
To Whom It May Concern:

Reference: FCC ID "KIN-915B" and IC "4309B-915B" Labeling

The drawing below represents the label for the 915B PCBA (printed circuit board assembly), showing the FCC and Industry Canada IDs. This label will appear on all 915B boards.



The location of the label on the board is left to the manufacturer. The following picture shows a typical placement.





The label shown below is an example of the final product label that could be used for products that contain the 915B radio. Such labels will be prominently displayed on the outside of any product containing the 915B PCBA. In conformance with FCC and IC requirements, the label shows that the final product “Contains” the 915B radio using the FCC and IC identifiers for it.

Note that Wave Wireless Corp has merged with WaveRider Inc., so the WaveRider name and logo can be used for Wave Wireless products. The label below is approximately twice the size of the actual label.



The label is composed of:

MATERIAL - Thermal Transfer Matte Silver Polyester

Label Material: 3M P/N 3M7872

ADHESIVE - Acrylic Adhesive: 3M P/N: #350

LINER - #55 Densified Kraft

Your Truly,

*Lawrence Gordon,*

Senior Technical Design Lead,

Wave Wireless Corporation,

Suite 4, 6110 - 1A St. SW, Calgary, Alta., Canada, T2H 0G3

Tel: (403) 770-1026 or (416) 848-1746,

Office Tel/FAX: (403) 253-5366,

Tel: (403) 616-5668 (cell)