

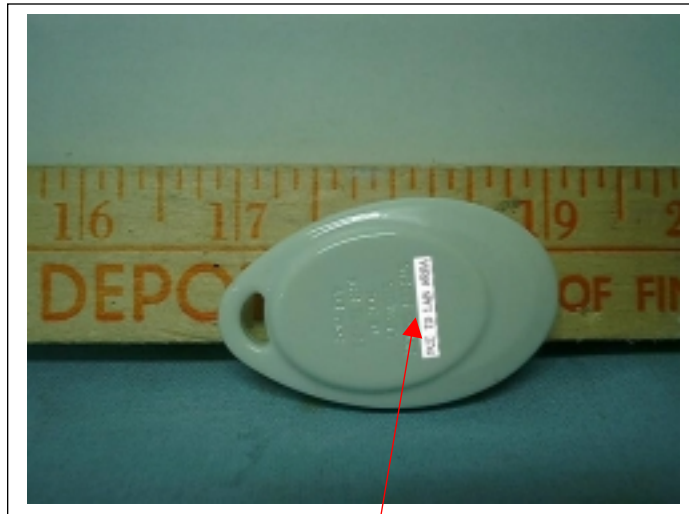
FCC ID LABEL FORMAT AND LOCATION

Applicant: VISION AUTOMOBILE ELECTRONICS INDUSTRIAL CO., LTD.

FCC ID: KFRTX-22-2

FCC ID: KFRTX-22-2

This device complies with part 15 of the FCC Rules. Operation is subject to the following two conditions: (1) This device may not cause harmful interference, and (2) this device must accept any interference received, including interference that may cause undesired operation.



FCC ID LABEL AREA