

### **Federal Communications Commission Statement**

This equipment has been tested and found to comply with the limits for a Class B digital device, pursuant to Part 15 of the FCC Rules. These limits are designed to provide reasonable protection against harmful interference in a residential installation. This equipment generates, uses, and can radiate radio frequency energy and, if not installed and used in accordance with the instruction, may cause harmful interference to radio communications. However, there is no guarantee that interference will not occur in a particular installation. If this equipment does cause harmful interference to radio or television reception, which can be determined by turning the equipment off and on, the user is encouraged to try and correct the interference by one of the following measures:

Reorient or relocate the receiving antenna,

Increase the separation between the equipment and receiver,

Connect the equipment into an outlet on a circuit different from that to which the receiver is connected.

Consult the dealer or an experienced radio/TV technician for help.

This device complies with Part 15 of the FCC Rules. Operation is subject to the following two conditions: (1) this device may not cause harmful interference, and (2) this device must accept any interference received, including interference that may cause undesired operation.

FCC Caution: Any changes or modifications not expressly approved by the party responsible for compliance could void the user's authority to operate this equipment.

### **Limited Warranty**

Vision Guarantees that every wireless garage contact is free from physical defects in material and workmanship under normal usage for one year from the date of purchase. If the product proves defective during this one-year warranty period, Vision will replace it free of charge.

Vision does not issue any refunds. This warranty is extended to the original end user purchase only and is not transferable. This warranty does not apply to: (1) damage to units caused by accident, dropping or abuse in handling, or any negligent usage; (2) units which have been repaired, taken apart, or modified by an unauthorized personnel; (3) units not used in accordance with instruction; (4) damages exceeding the cost of the product; (5) transit damage, initial installation costs, removal cost, or reinstallation cost.



## **Installation & Operation Manual**

**WGC-H2**

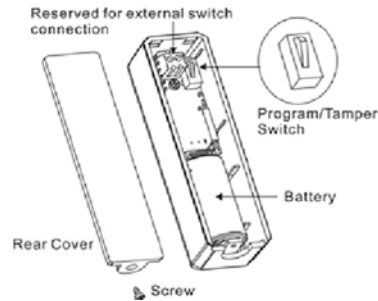
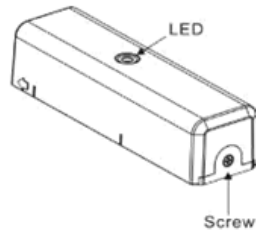
**Wireless Garage Contact**

## Introduction

Thanks for choosing the wireless garage contact of the home security device. This sensor monitors garage when garage is opened and closed.

## Product Description and Specification

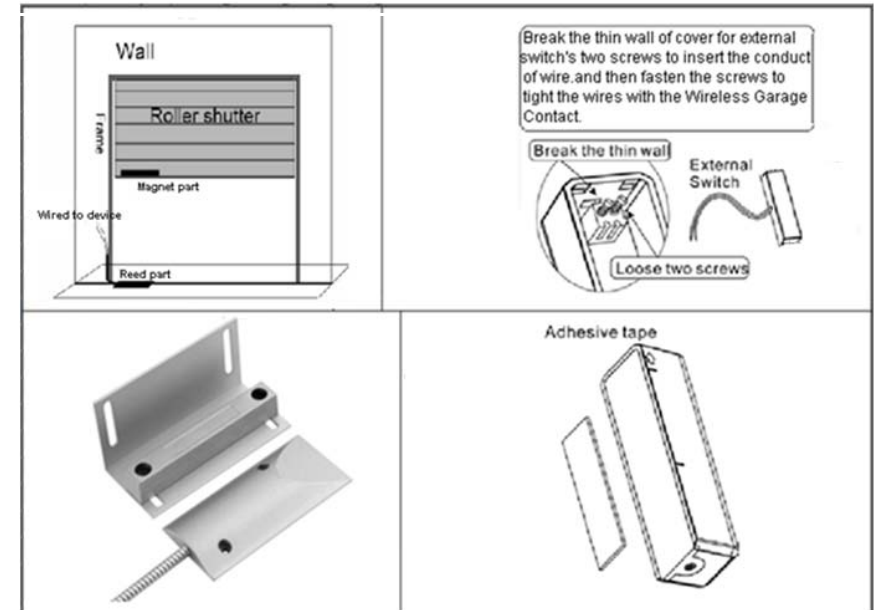
\*\*\* For indoor use only\*\*\*



Specification:	Package Content:
Protocol: 345.5MHz	1pc WGC-H2 sensor
Operating Range: Up to 200 feet line of sight	1pc CR123A Lithium Battery
Operating Temp.: -15°C~ 60°C (5°F ~140°F)	1pc Installation & Operation manual
Battery: Panasonic CR123A * 1PC	

## Installation

1. Unscrew the screw fastening the rear cover.
2. Slide the rear cover down.
3. Using the screws or adhesive tape to affix the rear cover on the frame along the opening edge of garage.
4. Before insert the battery, put home security controller into learning mode. Once put on CR123A battery into the battery compartment and LED will flash 5 times, and WGC-H2 garage contact will automotive included into system.
5. Slide back the rear cover and screw fastening with the front cove.
6. External Switch: You could use an external switch to connect with the WGC-H2 for extending detection. The WGC-H2 has 2 normally closed contact terminals. These can be used for external switch wired contacts. The external switch will send an alarm report by opening the garage.



## Operation

1. Opening the garage to separate the magnet from the sensor will send signal to the controller, and the LED will flash 5 times
2. Normal operation, the LED will not light.
3. The WGC-H2 sensor equipped with tamper switch. If the cover of sensor is removed, the garage contact will report a zone tamper to the controller, and the LED will flash 5 times.
4. If garage contact is in low battery status, it will report a message to controller, and LED will flash slow. Please change the battery.