

PHOTOS OF THE TESTED EUT

Photographs of RF-125 that was originally tested

- Photo 1. Front View of EUT
- Photo 2. Back View of EUT
- Photo 3. Top View of EUT
- Photo 4. Side View of EUT Showing Slide Switch
- Photo 5. Side View of EUT Showing DC Input Port
- Photo 6. Main Board of EUT, PCB Side
- Photo 7. Main Board of EUT, Solder Side

Photographs of EUT (model RF-1010)

- Photo 8. Front View of EUT
- Photo 9. Back View of EUT
- Photo 10. Top View of EUT
- Photo 11. Side View of EUT Showing Slide Switch
- Photo 12. Side View of EUT Showing DC Input Port
- Photo 13. Main Board of EUT, PCB Side
- Photo 14. Main Board of EUT, Solder Side

Photo 6. Main Board of EUT, PCB Side

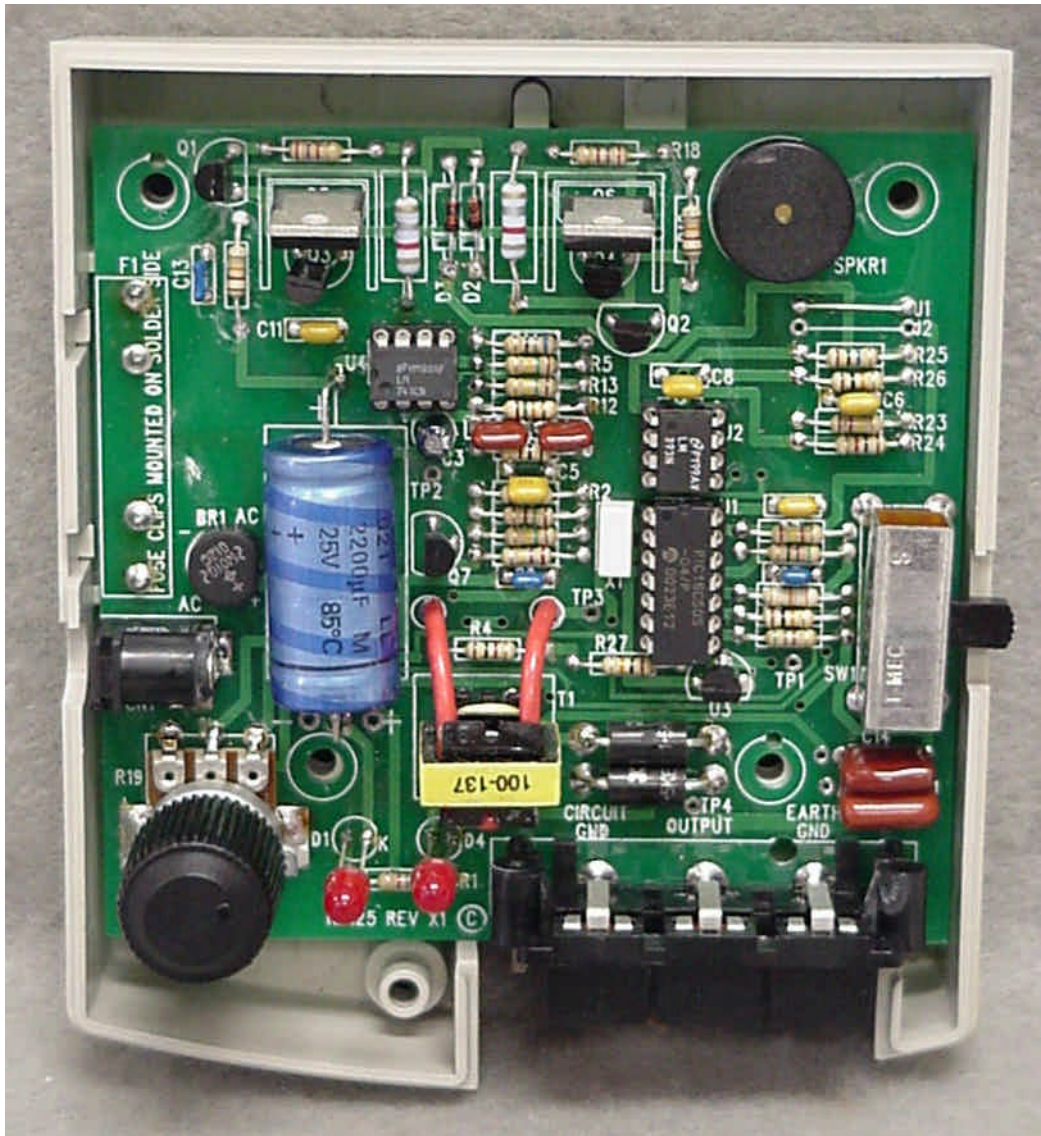


Photo 7. Main Board of EUT, Solder Side

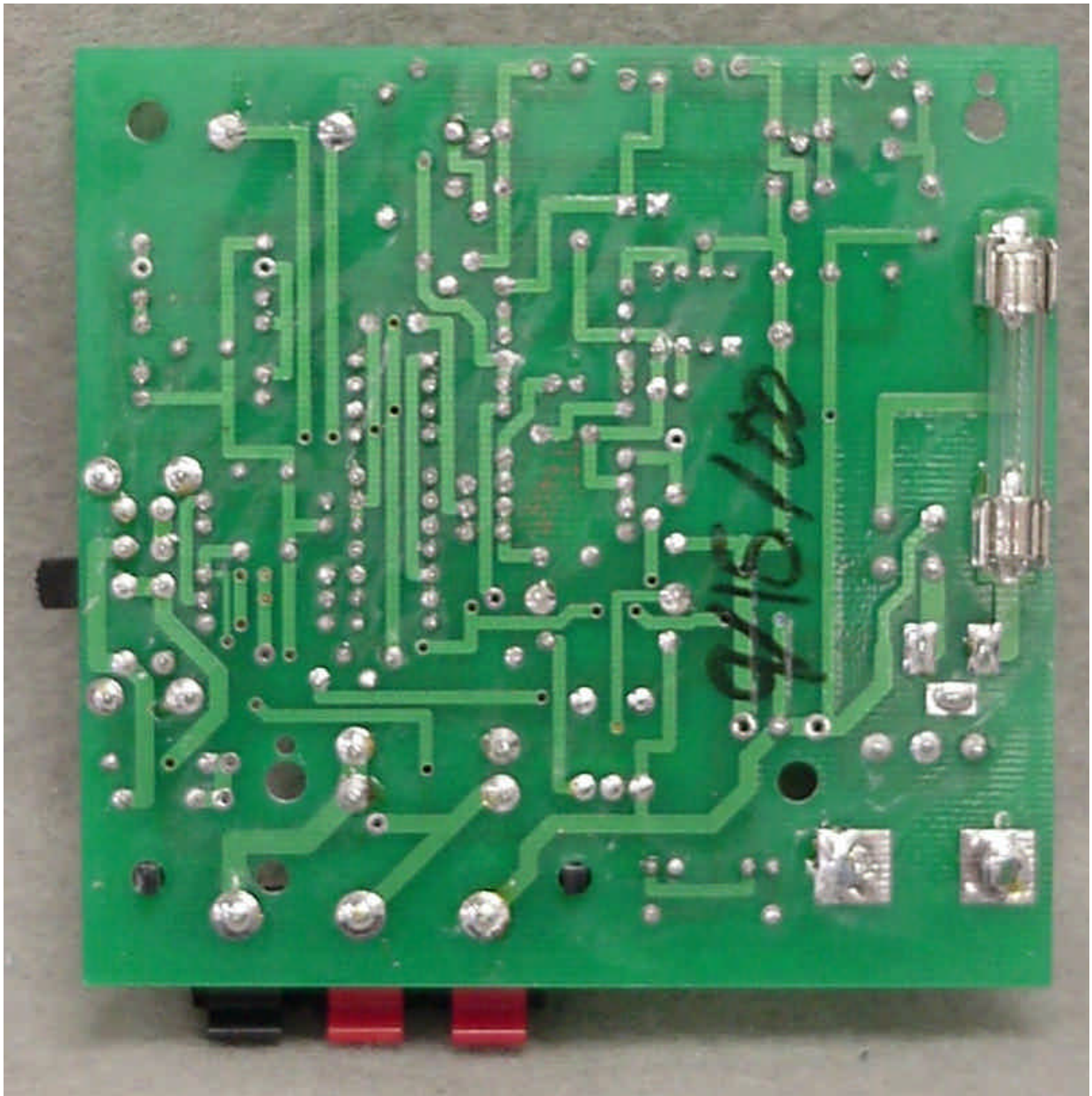


Photo 13. Main Board of EUT, PCB Side

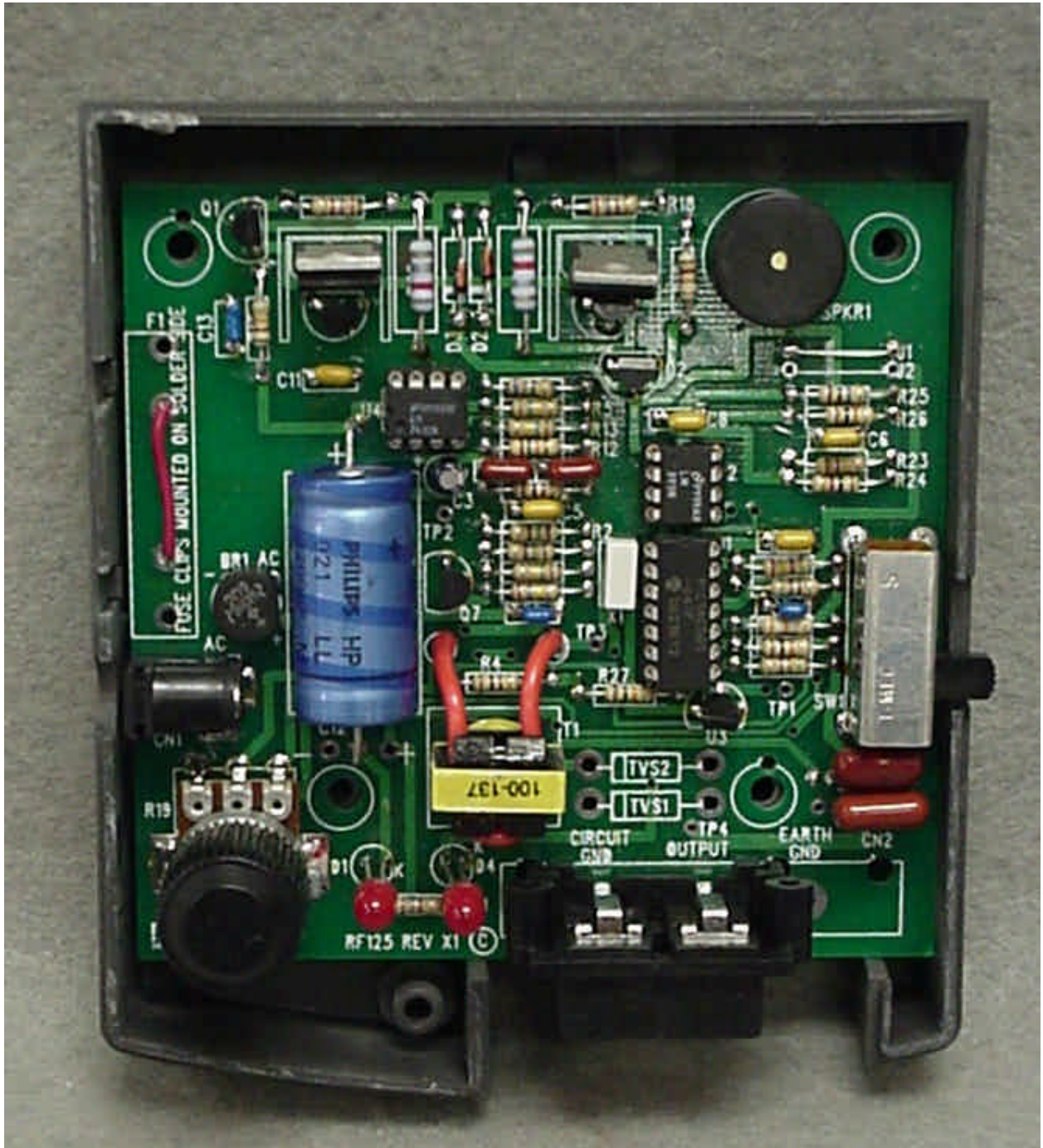


Photo 14. Main Board of EUT, Solder Side

