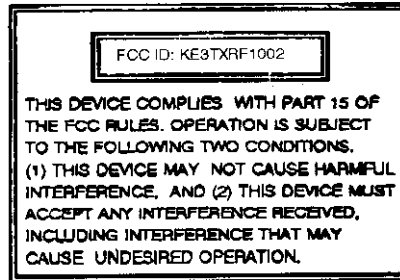


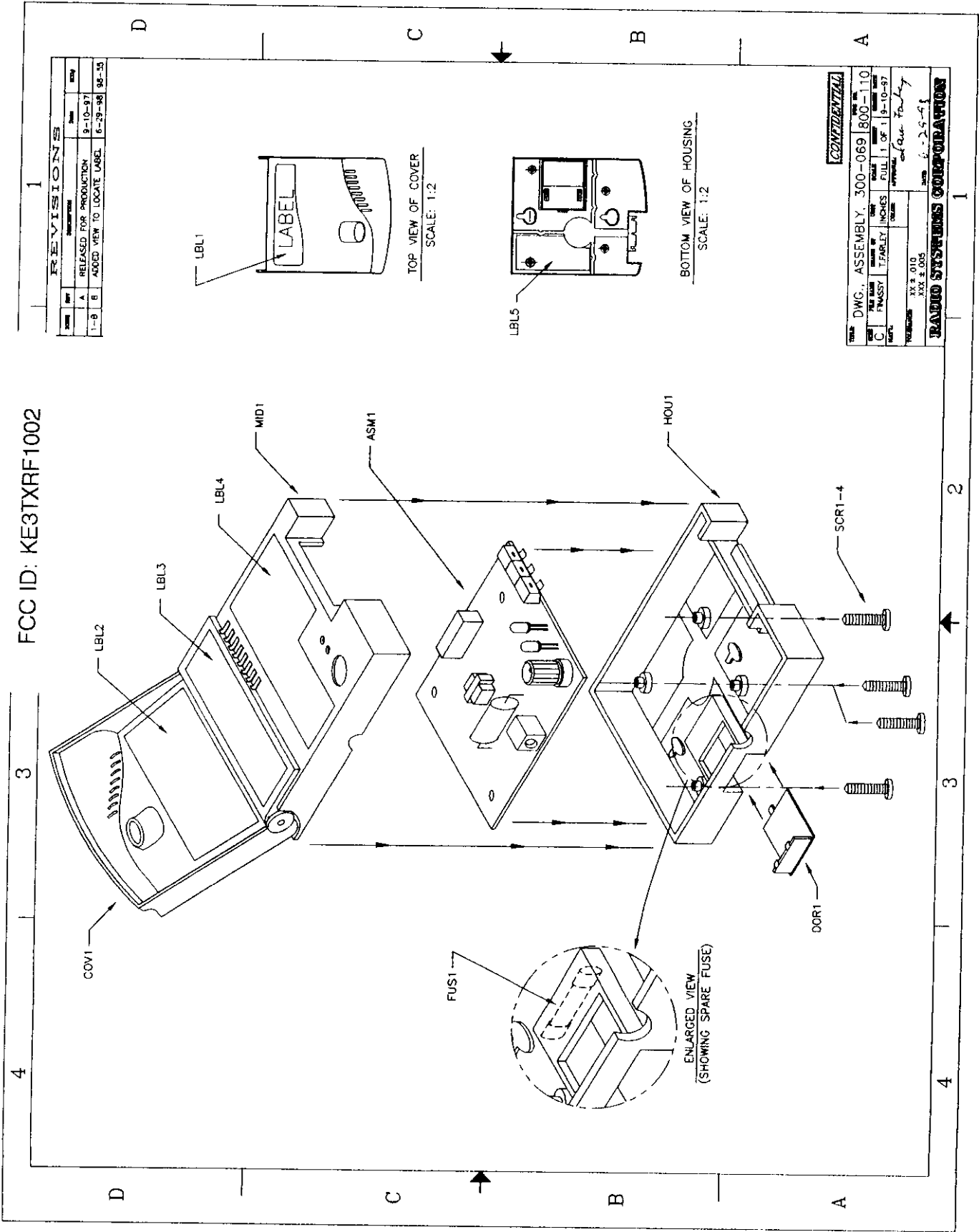
SECTION 3
LABELING INFORMATION

FCC ID: KE3TXRF1002

PRODUCT LABELING (MOST DEVICES)**Figure 1. FCC ID Label****Figure 2. Location of Label on EUT**

Actual size of label is 2.680" by 1.256" and will be placed on BOTTOM HOUSING of product.

**** NOTE: If assembly drawings are available that show the placement of the label on the product, please provide a copy of these to US Tech.**



FCC ID: KE3TXRF1002

2.680"

RF-1002
MFG. Date 7/97 S

PET TRAINING SYSTEM CLASSIFIED BY UNDERWRITERS LABORATORIES INC. AS TO ELECTRIC SHOCK AND FIRE ONLY SM27 FOR USE ONLY WITH THE UNDERGROUND FENCE RF-250, PG-280, PQU-250, AND UL 250 RECEIVERS. Caution: To reduce risk of electric shock, DO NOT REMOVE COVER. Refer to qualified service personnel. Risk of fire Risk of electric shock. Install Transmitter indoors. Do Not expose to rain.
110-120V, 60 Hz AC, 10W Max

This device complies with part 15 of the FCC Rules. Operation is subject to the following two conditions: 1. This device must not cause harmful interference 2. This device must accept any interference received including interference that may cause undesired operation
FCC ID KE3TXRF1002
2/91 212



1.256"

Change to new label include "Fence"

special note:

NOTE: A: MFG Date to be printed sequential by month as per placed sample (7/97)

For Example:

March 1997 = 3/97

April = 4/97

May = 5/97

NOTE B: MFG ID

code letter:

For example:

S= SUGA

W= WHITWAYS

NOTE C:

Do not print box. For placement only.

Note D:

See technical drawing for technical specifications.

Project: RF-1002 label

Description: FCC



RSC PART # 400-232

REVISION # A

RSC File Name: 400-232.cdr (corel ver 5.0)

Material: .008 Rigid white vinyl, .001 Polyester overlamination UL recognized

Date: 1/8/98

Drawn By: JN

Radio Systems Graphics Department

For questions regarding artwork please contact: JuliAnne Nicholson

Colors: PMS: Black

723.697.0205 / or email at: jnicholson@radiosys.com

777-5404