

US Tech Test Report:
Issue Date:
Report Number:
Customer:
Model:
FCC ID:

FCC Part 15.231
August 13, 2013
13-0239
Radio Systems Corporation
PTA00-14295
KE3-PTA14295

INTERNAL PHOTOGRAPHS

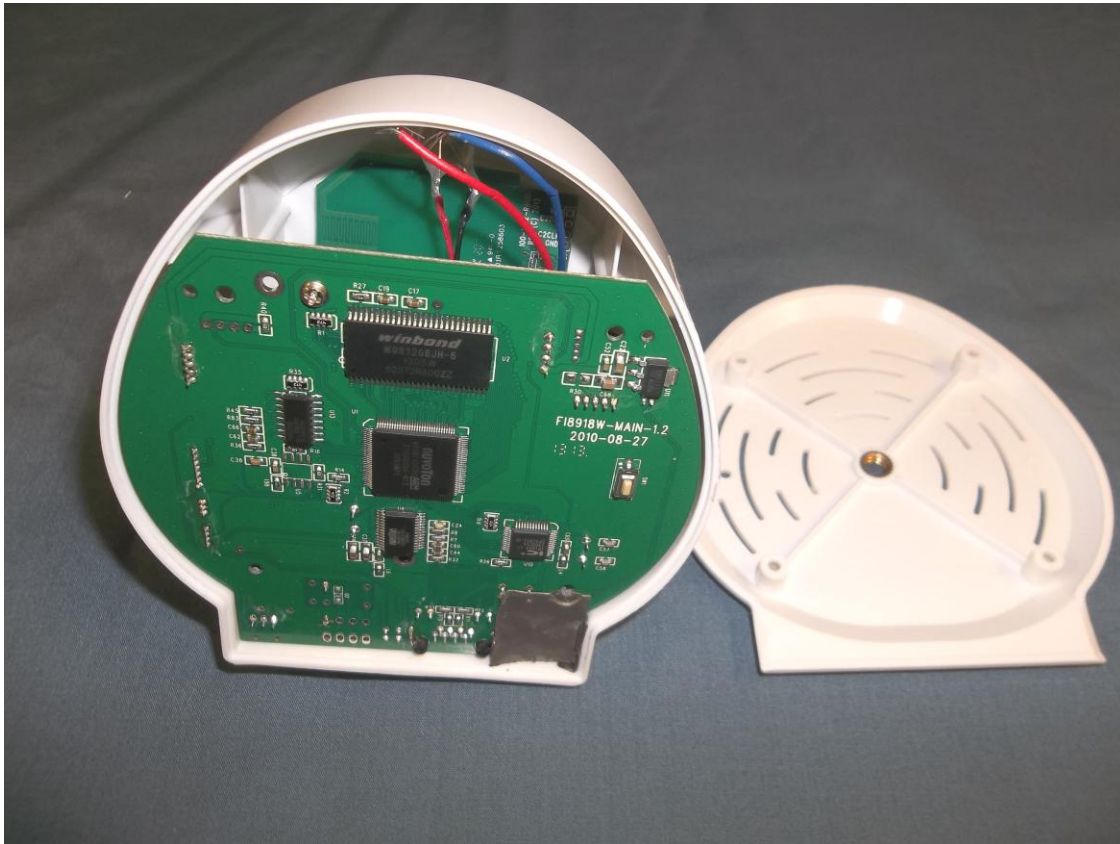


Figure 1. Host Device with Bottom Cover Off

US Tech Test Report:
Issue Date:
Report Number:
Customer:
Model:
FCC ID:

FCC Part 15.231
August 13, 2013
13-0239
Radio Systems Corporation
PTA00-14295
KE3-PTA14295

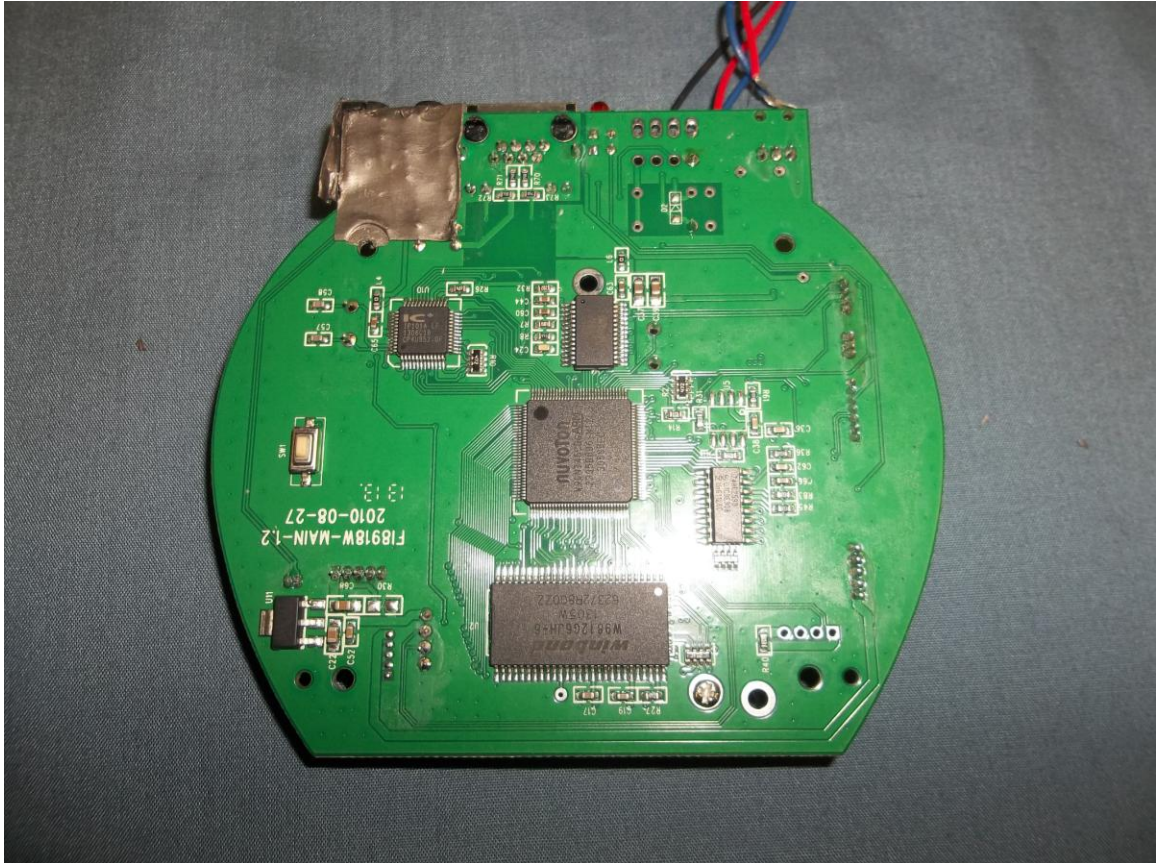


Figure 2. HOST Device PCB, Solder Side

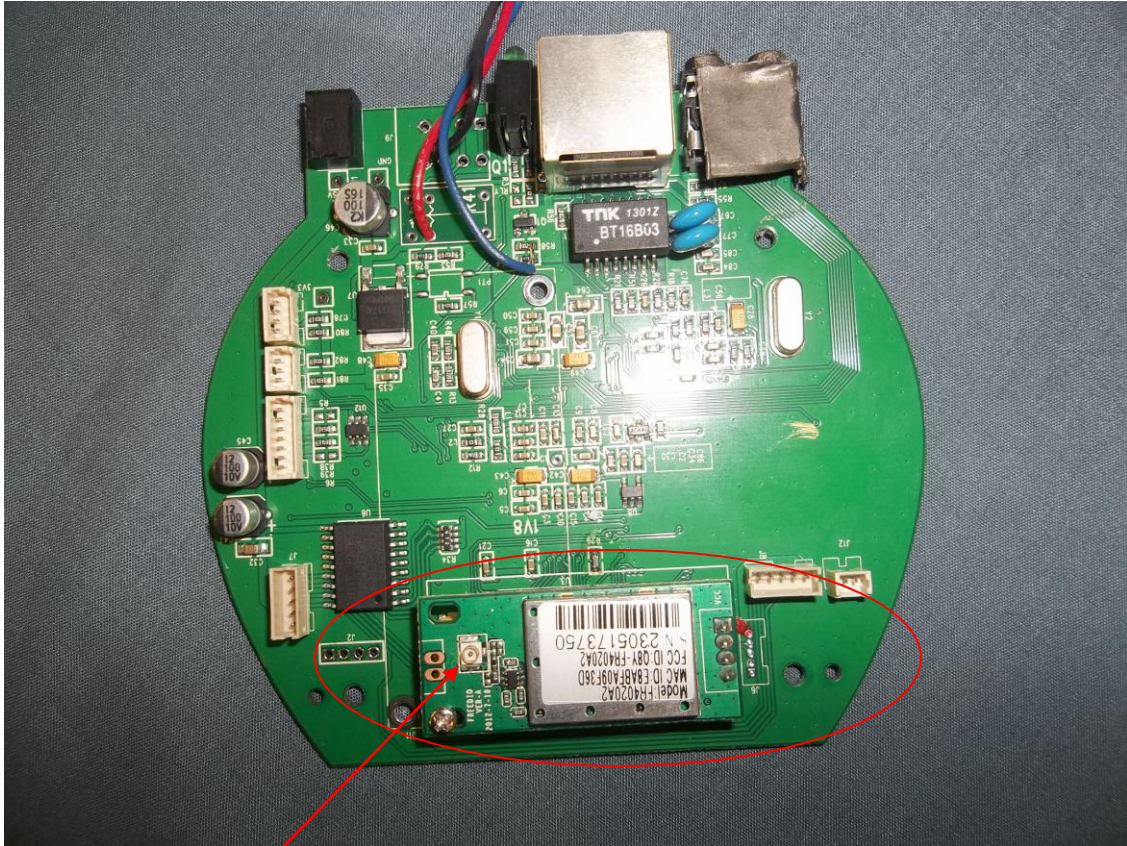


Figure 3. HOST Device PCB, Component Side, with HOST Radio

2.4 GHz radio module FCC ID:
Q8Y-FR4020A2 with u.fl to SMA
connector for external antenna.

US Tech Test Report:
Issue Date:
Report Number:
Customer:
Model:
FCC ID:

FCC Part 15.231
August 13, 2013
13-0239
Radio Systems Corporation
PTA00-14295
KE3-PTA14295

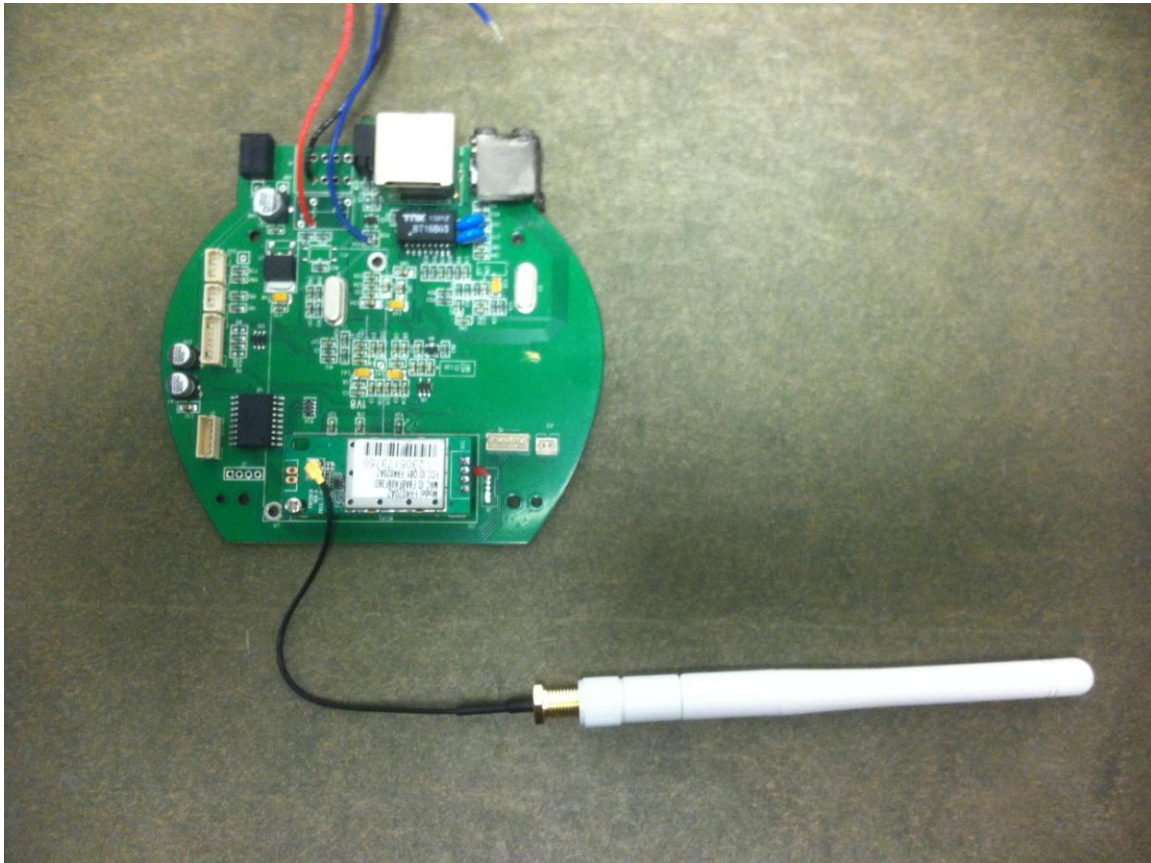
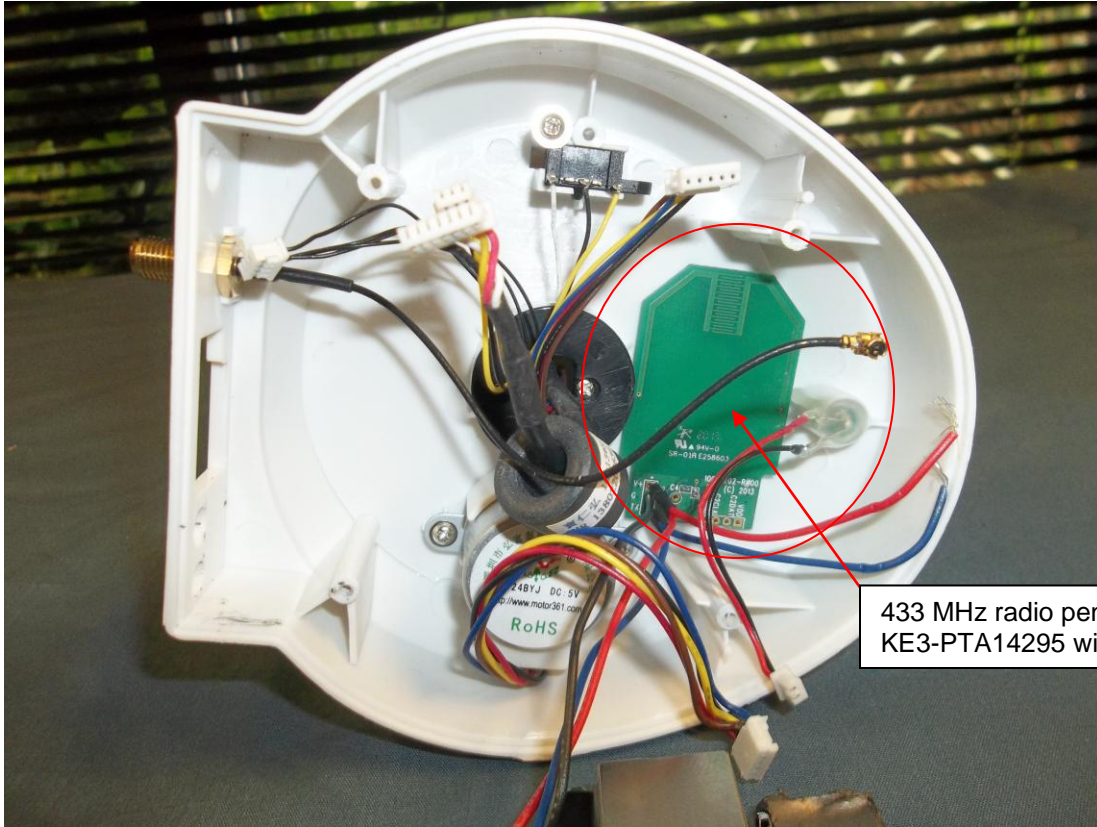


Figure 4. HOST 2.4 GHz Radio with External Antenna Attached



433 MHz radio pending FCC ID:
KE3-PTA14295 with trace antenna

Figure 5. EUT Inside Host

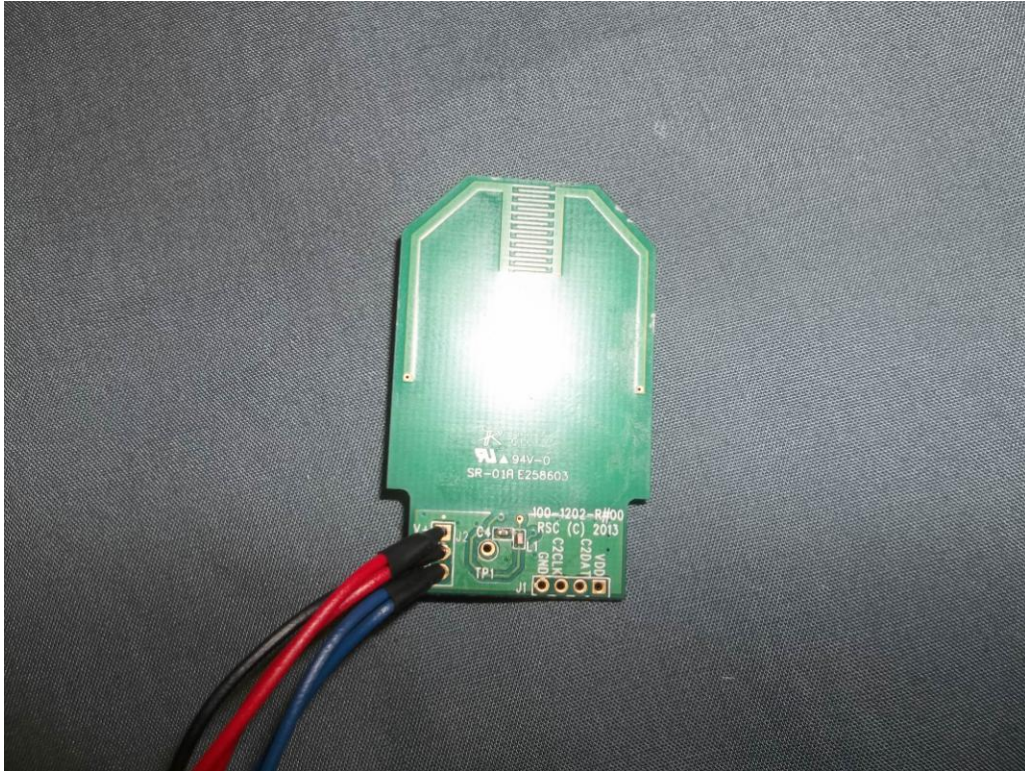


Figure 6. EUT Transmitter Board, Trace Side

US Tech Test Report:
Issue Date:
Report Number:
Customer:
Model:
FCC ID:

FCC Part 15.231
August 13, 2013
13-0239
Radio Systems Corporation
PTA00-14295
KE3-PTA14295



Figure 7. EUT Transmitter Board, Component Side