

US Tech Test Report:
FCC ID:
IC:
Test Report Number:
Issue Date:
Customer:
Model:

FCC Part 15 Certification/ RSS 210
KE3-3003672
2721A-3003672
22-0139
May 20, 2022
Radio Systems Corporation
300-3672

Internal Photographs



Figure 1. EUT Door Frame Open

US Tech Test Report:
FCC ID:
IC:
Test Report Number:
Issue Date:
Customer:
Model:

FCC Part 15 Certification/ RSS 210
KE3-3003672
2721A-3003672
22-0139
May 20, 2022
Radio Systems Corporation
300-3672

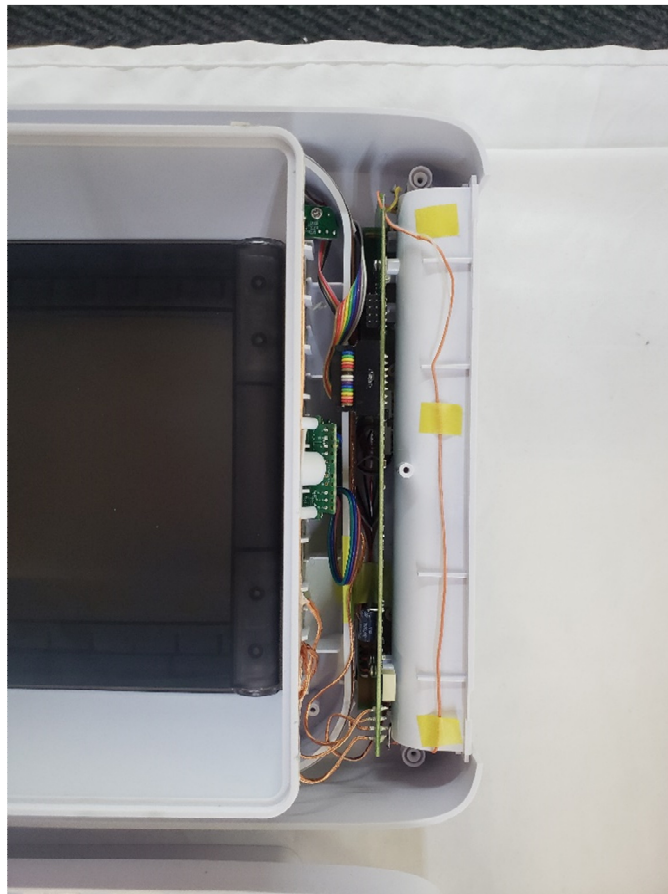


Figure 2. Close up of Board still installed

US Tech Test Report:
FCC ID:
IC:
Test Report Number:
Issue Date:
Customer:
Model:

FCC Part 15 Certification/ RSS 210
KE3-3003672
2721A-3003672
22-0139
May 20, 2022
Radio Systems Corporation
300-3672

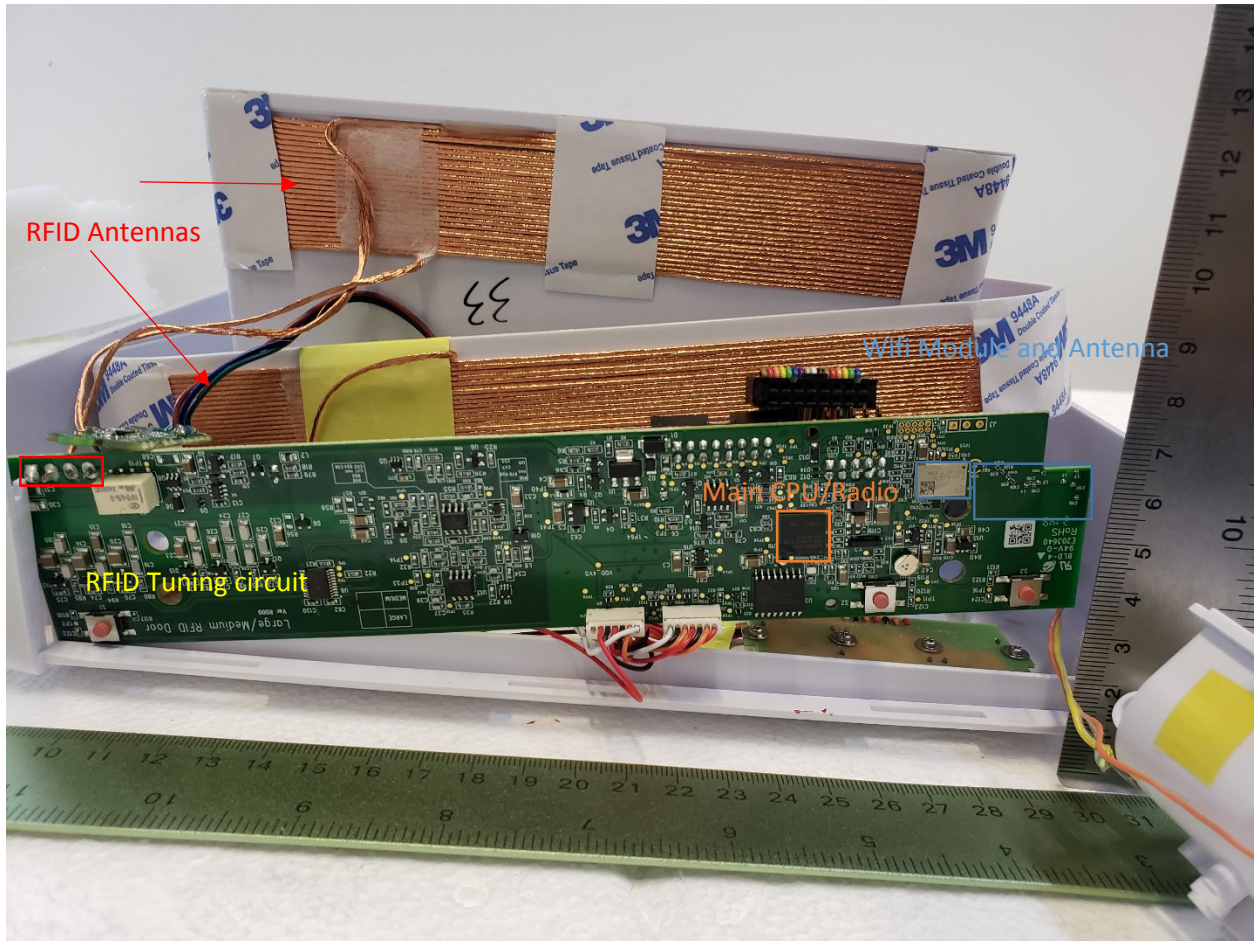


Figure 3. Main PCB Component Side

Note: Coils antenna used for RFID is indicated with RED arrows above.

US Tech Test Report:
FCC ID:
IC:
Test Report Number:
Issue Date:
Customer:
Model:

FCC Part 15 Certification/ RSS 210
KE3-3003672
2721A-3003672
22-0139
May 20, 2022
Radio Systems Corporation
300-3672

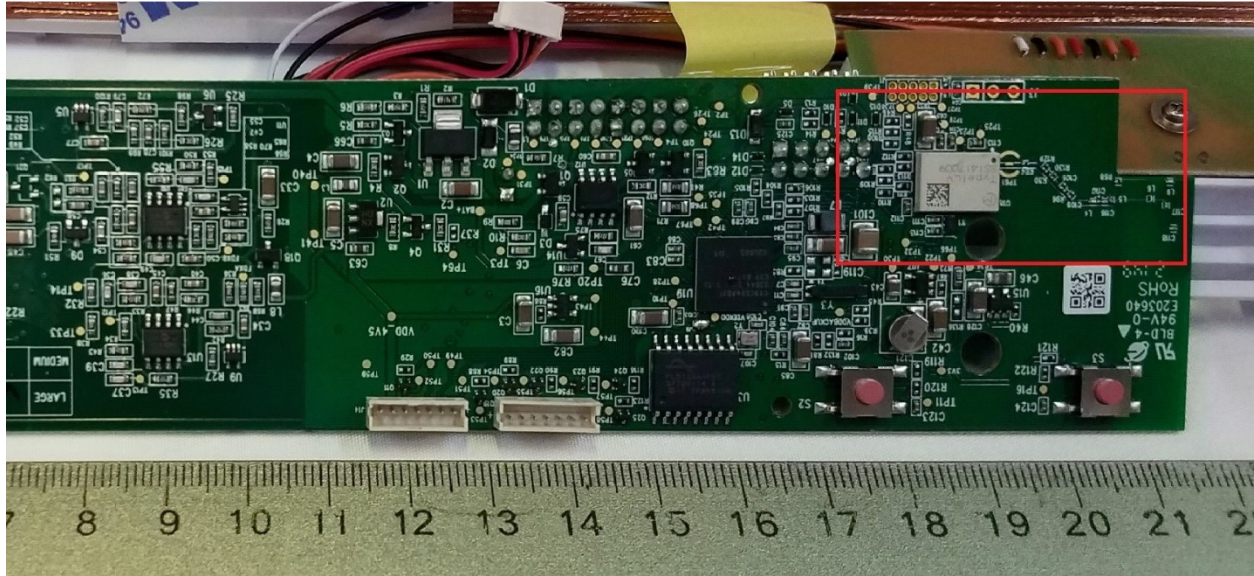


Figure 4. Wi-Fi module and antenna (Close Up)

US Tech Test Report:
FCC ID:
IC:
Test Report Number:
Issue Date:
Customer:
Model:

FCC Part 15 Certification/ RSS 210
KE3-3003672
2721A-3003672
22-0139
May 20, 2022
Radio Systems Corporation
300-3672

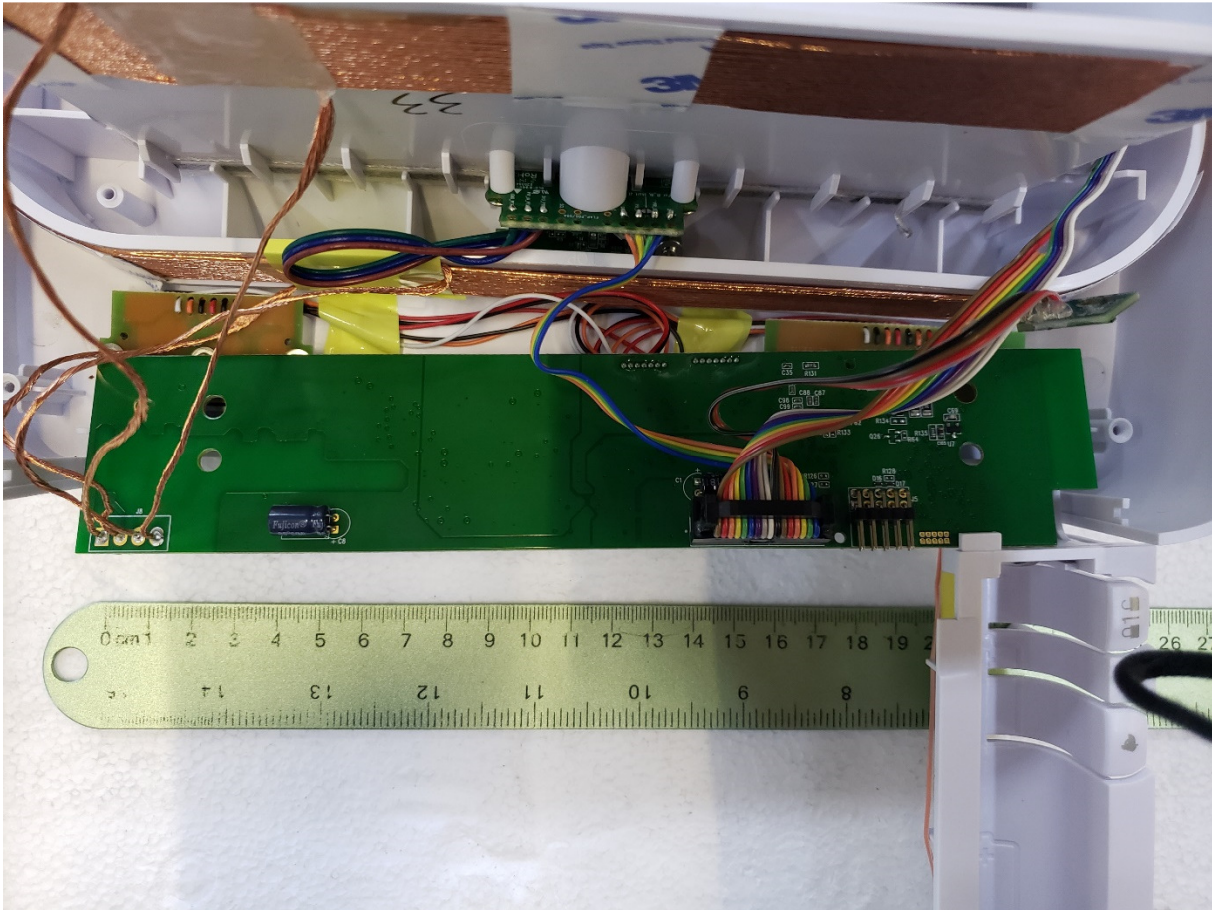


Figure 5. Main PCB back Side

US Tech Test Report:
FCC ID:
IC:
Test Report Number:
Issue Date:
Customer:
Model:

FCC Part 15 Certification/ RSS 210
KE3-3003672
2721A-3003672
22-0139
May 20, 2022
Radio Systems Corporation
300-3672



Figure 6. PIR Sensor PCB front

US Tech Test Report:
FCC ID:
IC:
Test Report Number:
Issue Date:
Customer:
Model:

FCC Part 15 Certification/ RSS 210
KE3-3003672
2721A-3003672
22-0139
May 20, 2022
Radio Systems Corporation
300-3672

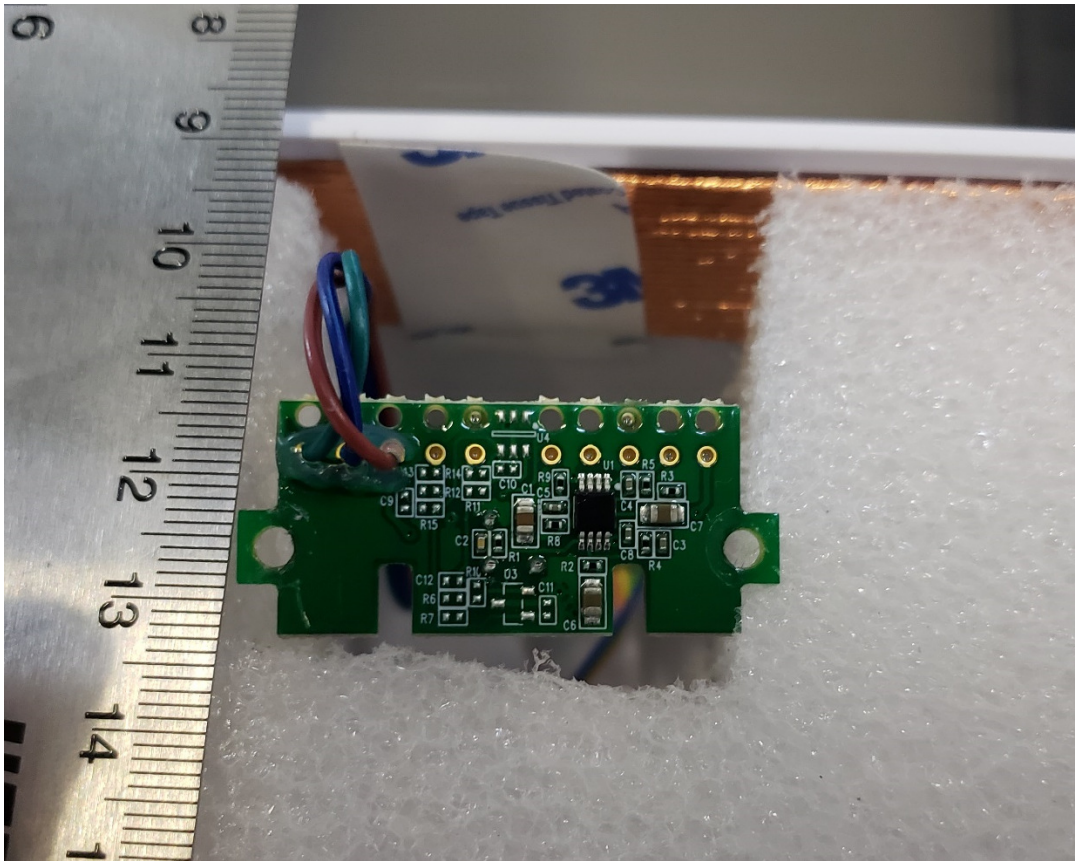


Figure 7. PIR sensor PCB Rear

US Tech Test Report:
FCC ID:
IC:
Test Report Number:
Issue Date:
Customer:
Model:

FCC Part 15 Certification/ RSS 210
KE3-3003672
2721A-3003672
22-0139
May 20, 2022
Radio Systems Corporation
300-3672

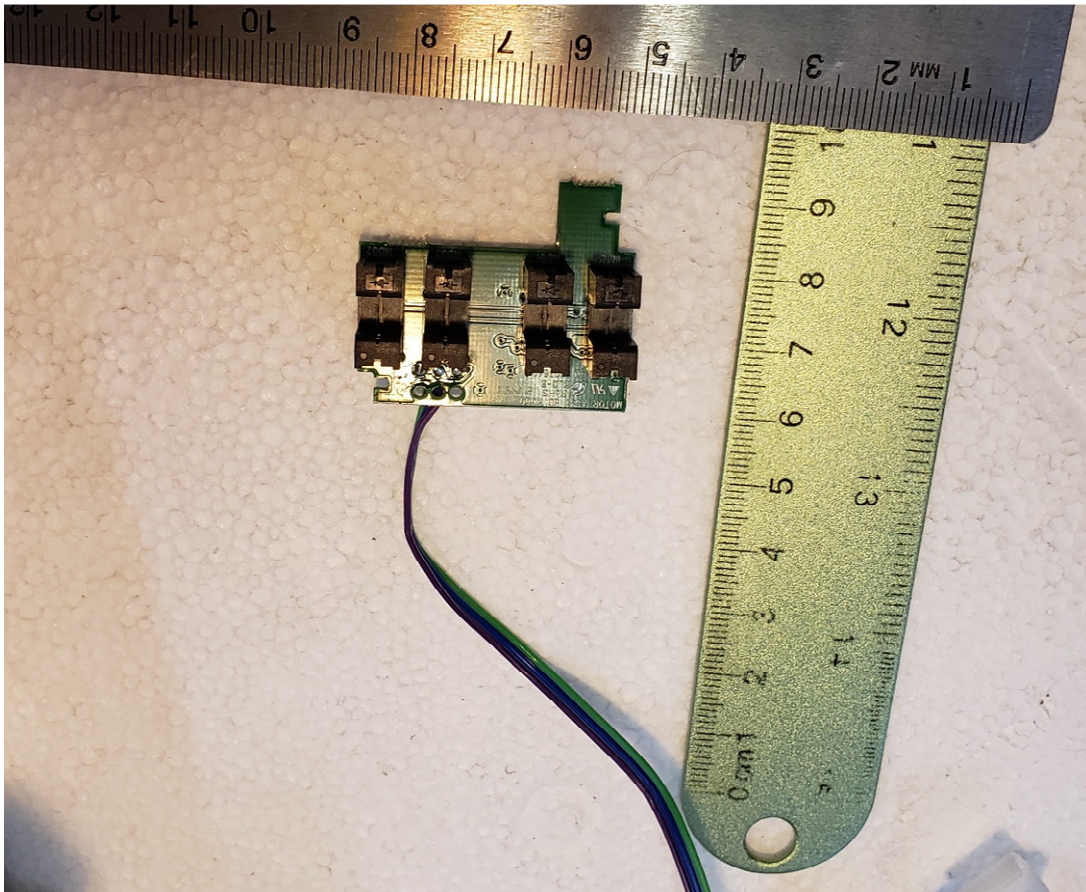


Figure 8. Motor sensor PCB front

US Tech Test Report:
FCC ID:
IC:
Test Report Number:
Issue Date:
Customer:
Model:

FCC Part 15 Certification/ RSS 210
KE3-3003672
2721A-3003672
22-0139
May 20, 2022
Radio Systems Corporation
300-3672

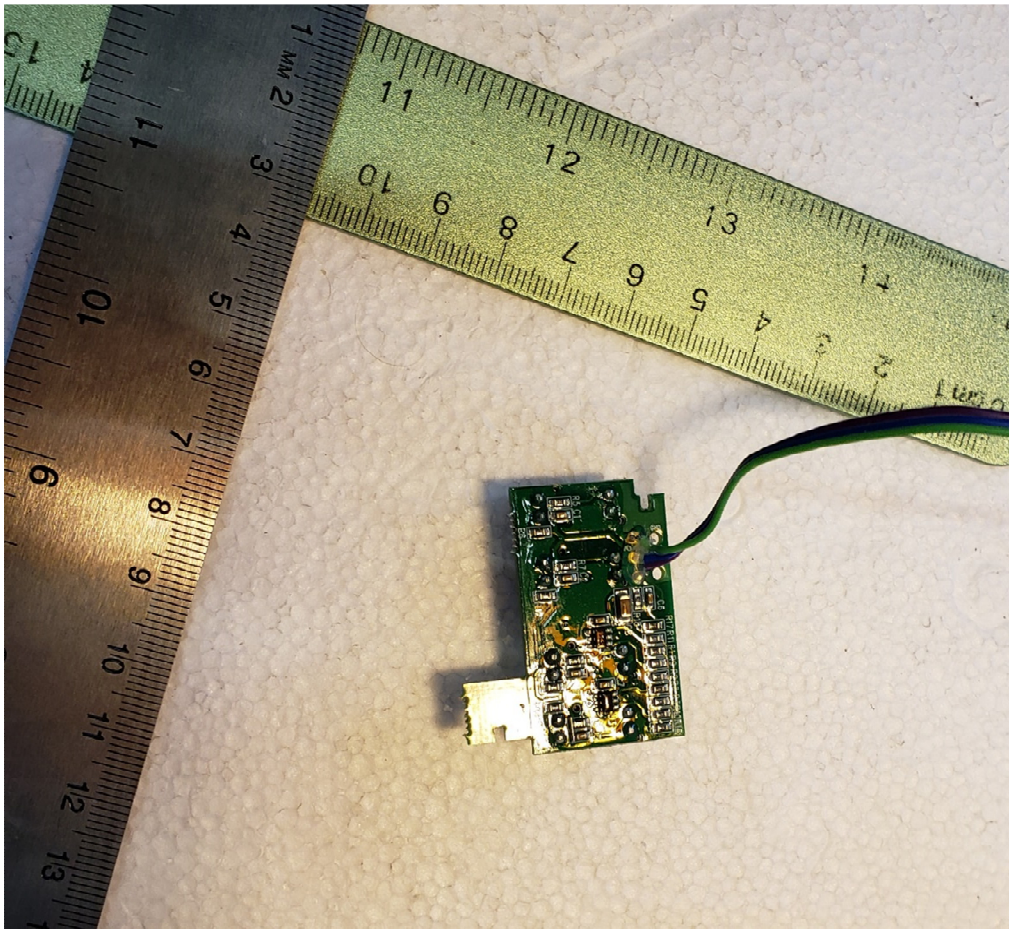


Figure 9. Motor Sensor PCB Rear