

US Tech Test Report:
FCC ID:
IC:
Test Report Number:
Issue Date:
Customer:
Model:

FCC Part 15 Certification/ RSS 210
KE3-3003670
2721A-3003670
22-0144
May 25, 2022
Radio Systems Corporation
300-3670

Internal Photographs

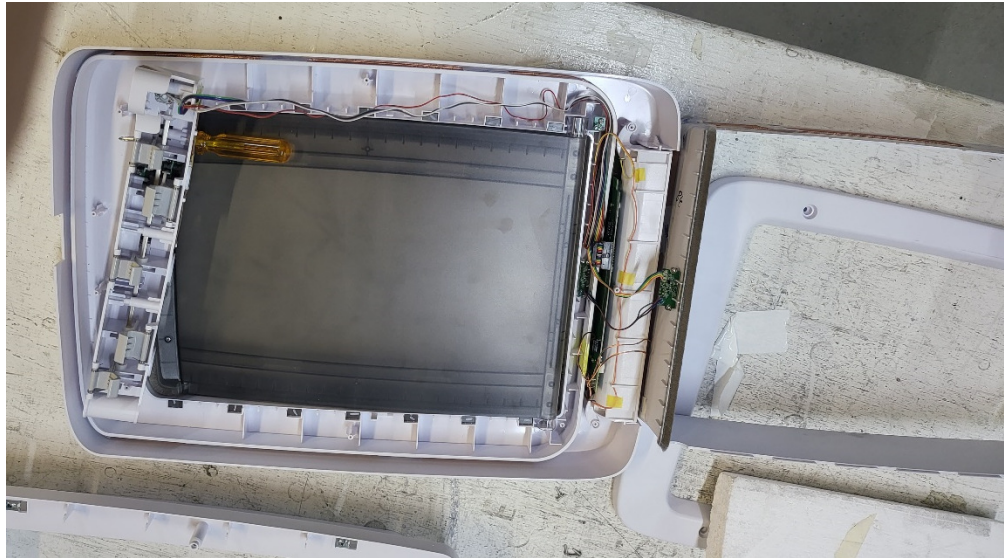


Figure 1. EUT Door Frame Open

US Tech Test Report:
FCC ID:
IC:
Test Report Number:
Issue Date:
Customer:
Model:

FCC Part 15 Certification/ RSS 210
KE3-3003670
2721A-3003670
22-0144
May 25, 2022
Radio Systems Corporation
300-3670



Figure 2. Close up of Board still installed

US Tech Test Report:
FCC ID:
IC:
Test Report Number:
Issue Date:
Customer:
Model:

FCC Part 15 Certification/ RSS 210
KE3-3003670
2721A-3003670
22-0144
May 25, 2022
Radio Systems Corporation
300-3670

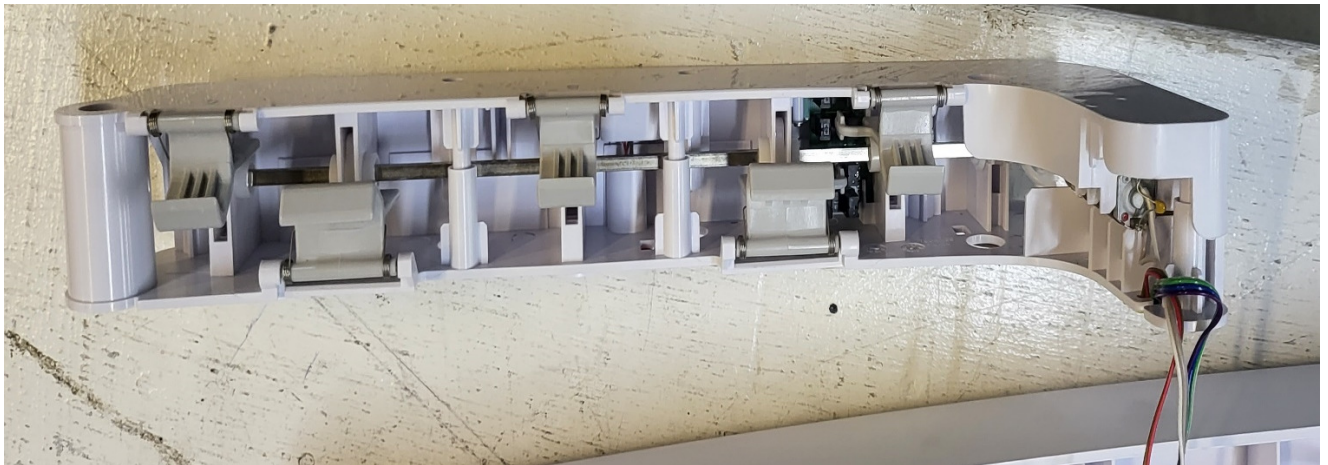


Figure 3. Motor assembly

US Tech Test Report:
FCC ID:
IC:
Test Report Number:
Issue Date:
Customer:
Model:

FCC Part 15 Certification/ RSS 210
KE3-3003670
2721A-3003670
22-0144
May 25, 2022
Radio Systems Corporation
300-3670

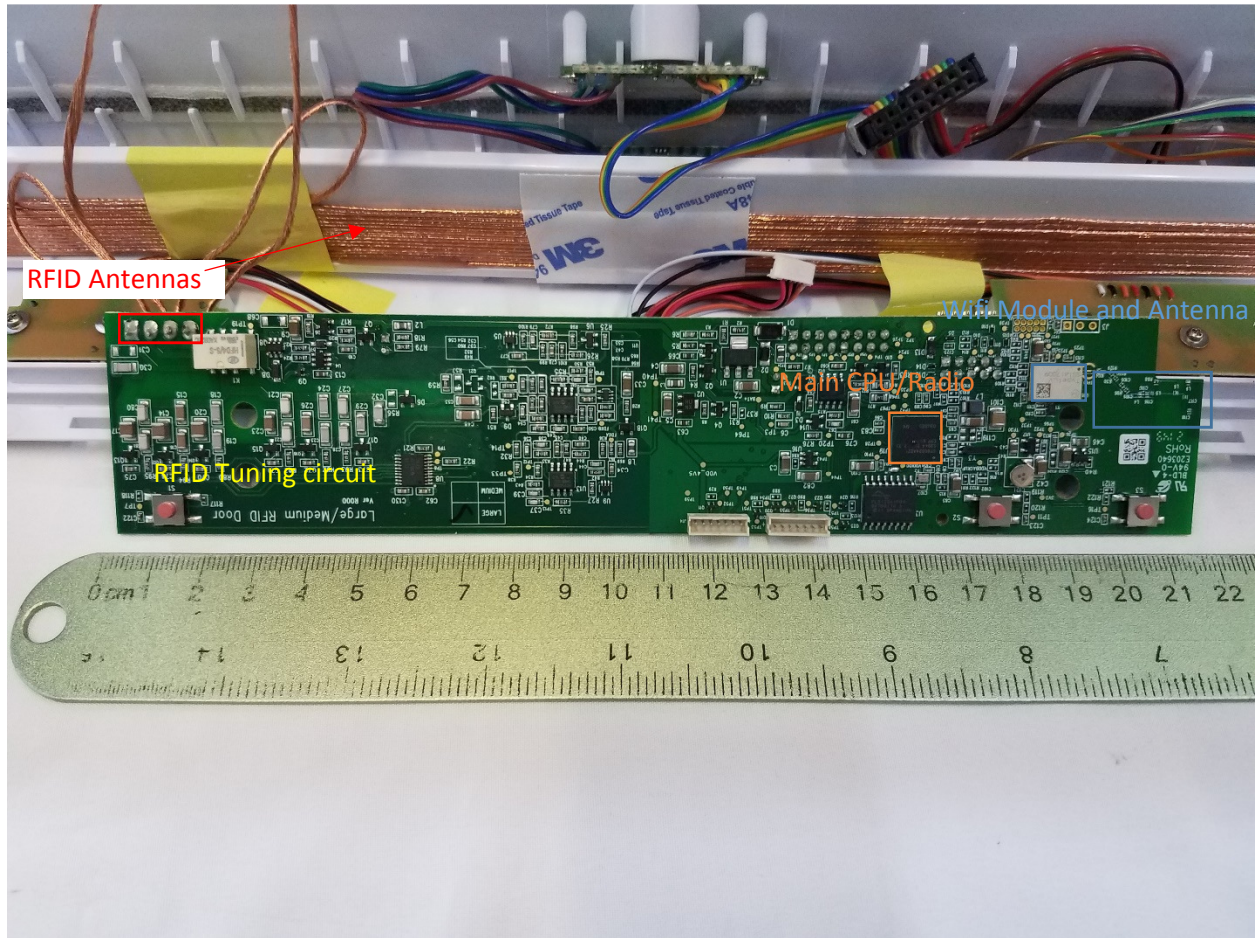


Figure 4. PCB Component Side

US Tech Test Report:
FCC ID:
IC:
Test Report Number:
Issue Date:
Customer:
Model:

FCC Part 15 Certification/ RSS 210
KE3-3003670
2721A-3003670
22-0144
May 25, 2022
Radio Systems Corporation
300-3670

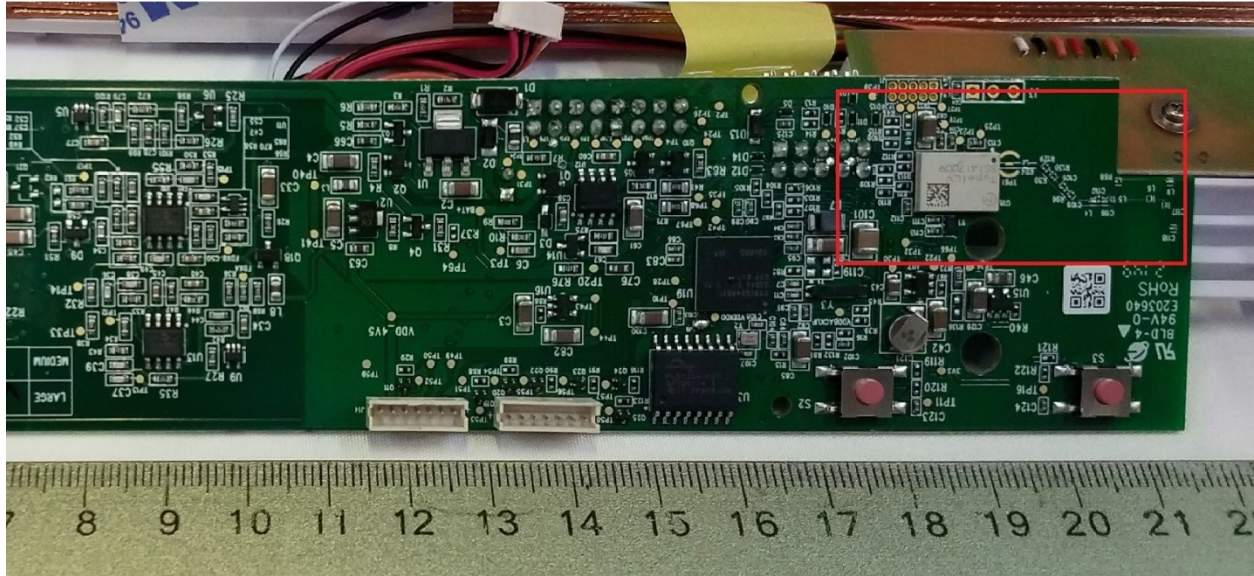
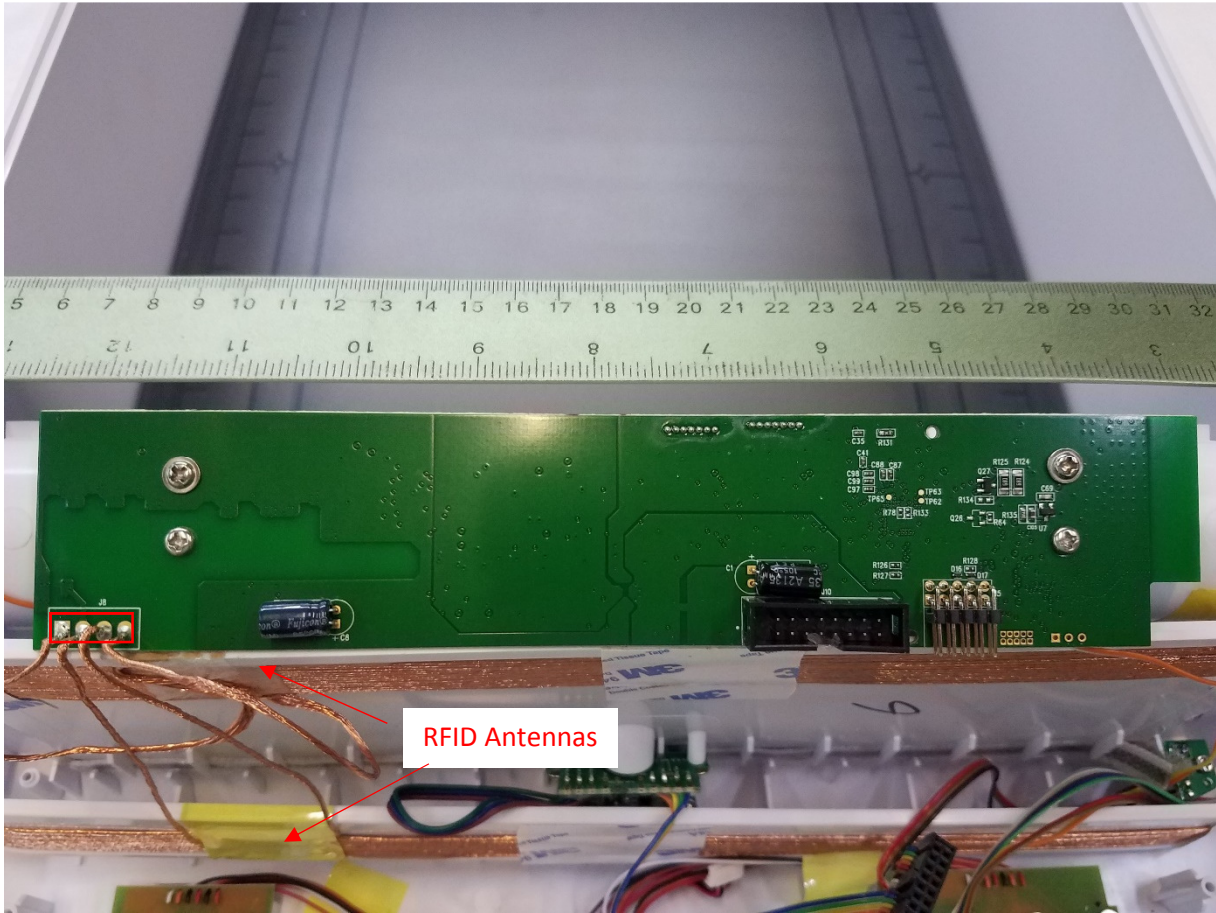


Figure 5. Wi-Fi module and antenna (Close Up)

US Tech Test Report:
FCC ID:
IC:
Test Report Number:
Issue Date:
Customer:
Model:

FCC Part 15 Certification/ RSS 210
KE3-3003670
2721A-3003670
22-0144
May 25, 2022
Radio Systems Corporation
300-3670



US Tech Test Report:
FCC ID:
IC:
Test Report Number:
Issue Date:
Customer:
Model:

FCC Part 15 Certification/ RSS 210
KE3-3003670
2721A-3003670
22-0144
May 25, 2022
Radio Systems Corporation
300-3670

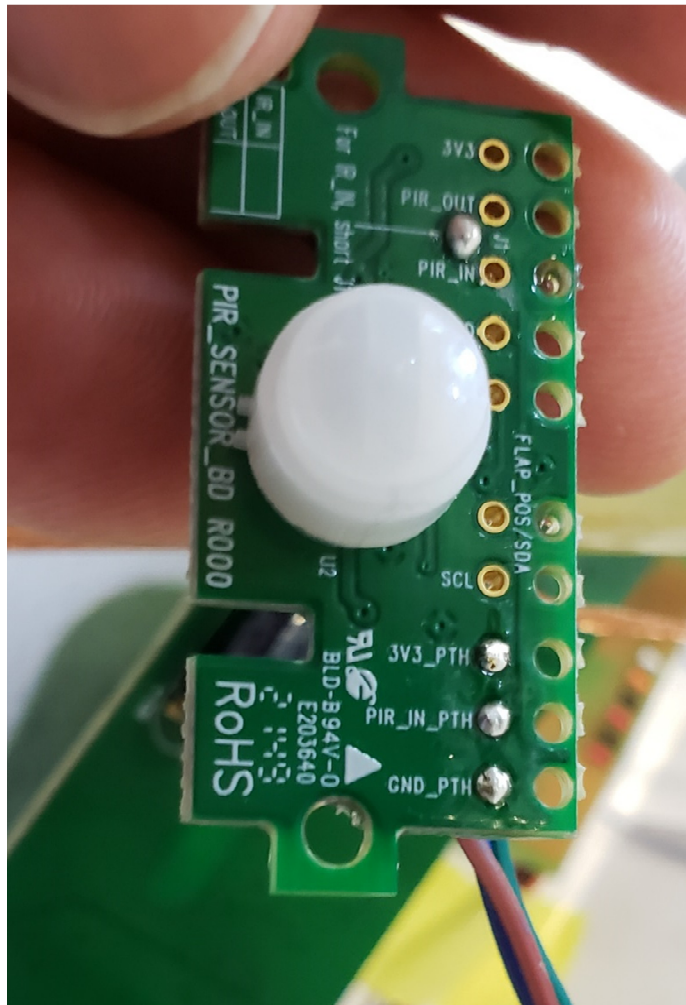


Figure 7. PIR Sensor PCB

US Tech Test Report:
FCC ID:
IC:
Test Report Number:
Issue Date:
Customer:
Model:

FCC Part 15 Certification/ RSS 210
KE3-3003670
2721A-3003670
22-0144
May 25, 2022
Radio Systems Corporation
300-3670

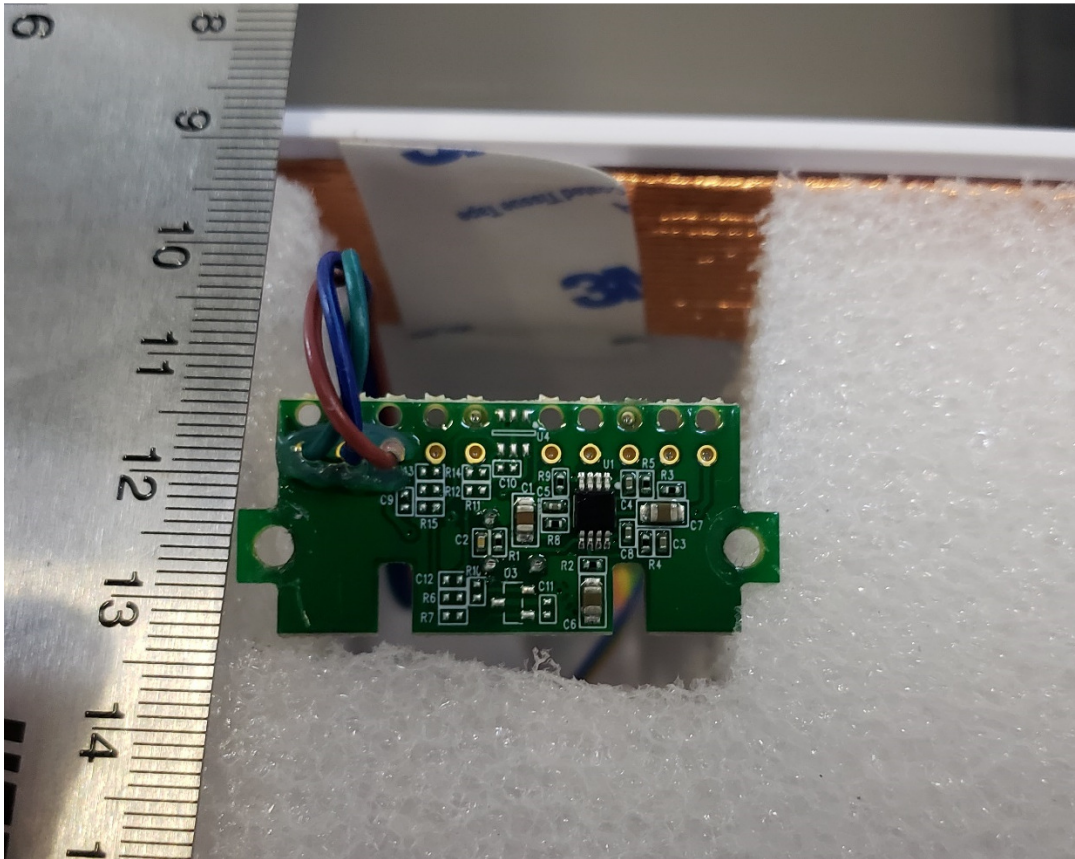


Figure 8. PIR sensor PCB Rear

US Tech Test Report:
FCC ID:
IC:
Test Report Number:
Issue Date:
Customer:
Model:

FCC Part 15 Certification/ RSS 210
KE3-3003670
2721A-3003670
22-0144
May 25, 2022
Radio Systems Corporation
300-3670

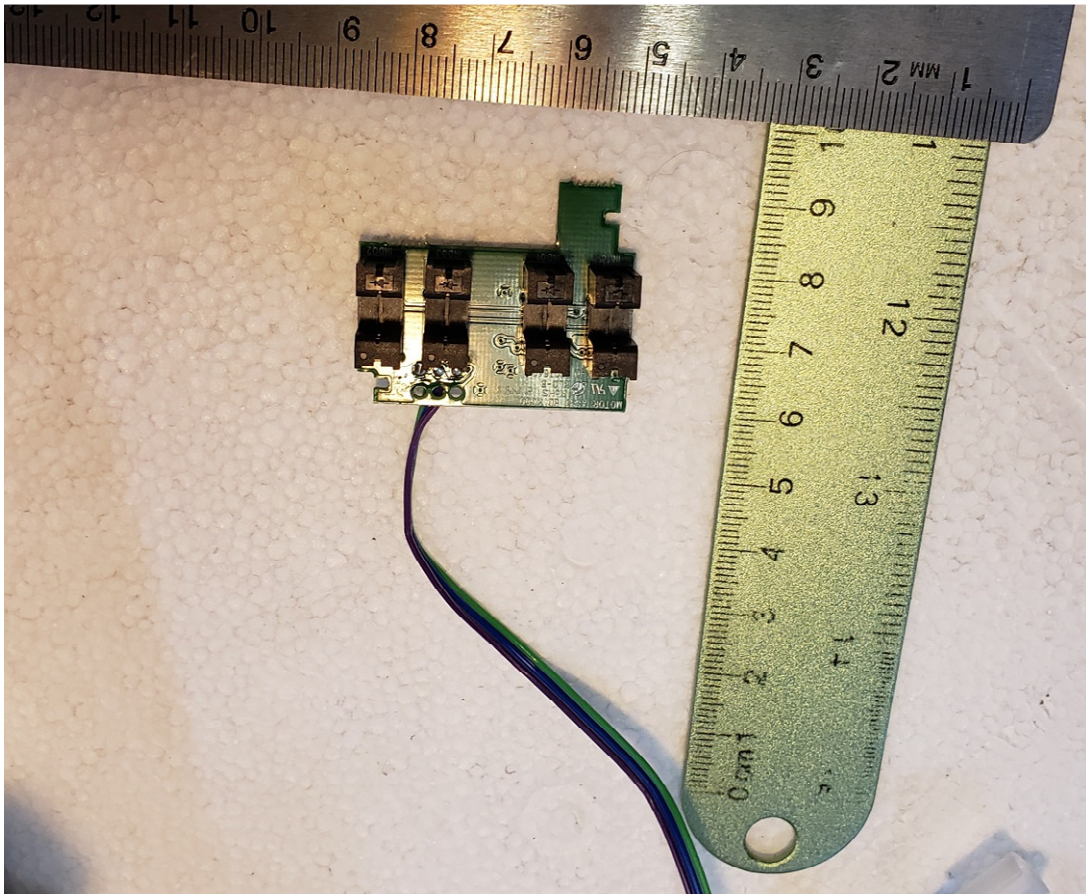


Figure 9. Motor sensor PCB front

US Tech Test Report:
FCC ID:
IC:
Test Report Number:
Issue Date:
Customer:
Model:

FCC Part 15 Certification/ RSS 210
KE3-3003670
2721A-3003670
22-0144
May 25, 2022
Radio Systems Corporation
300-3670

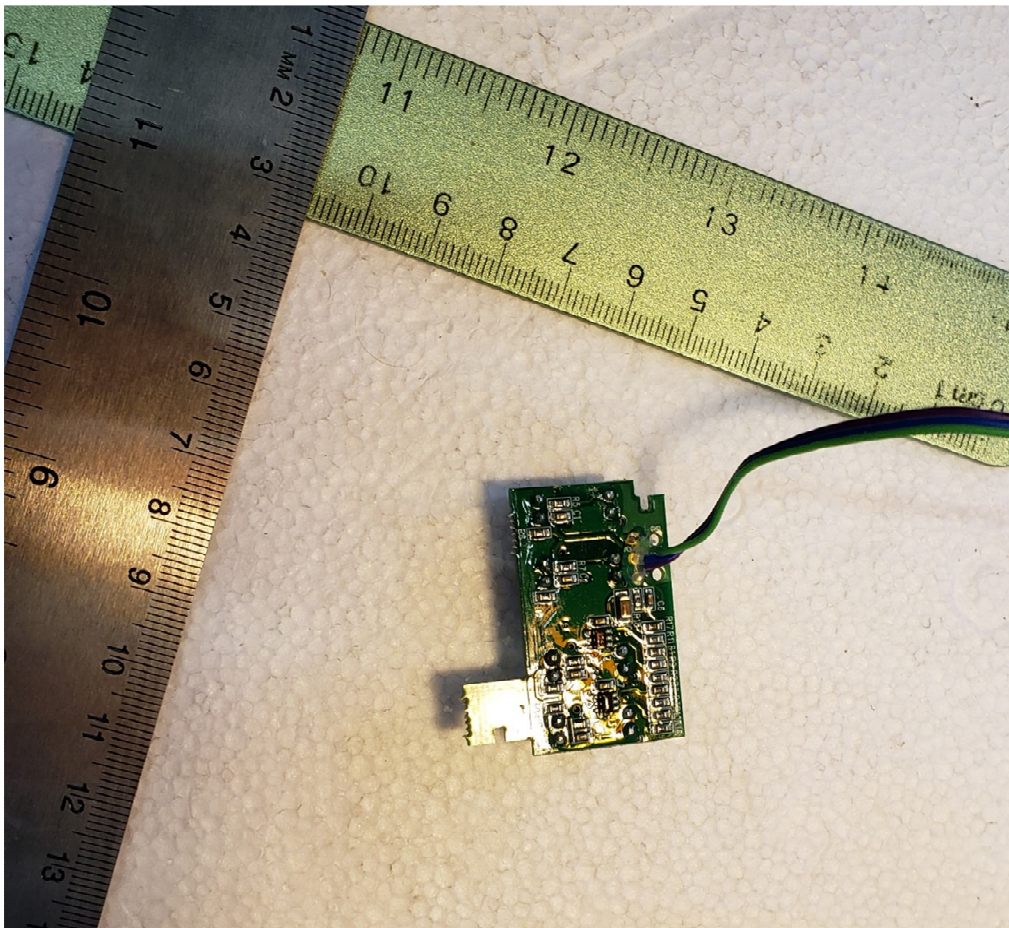


Figure 10. Motor Sensor PCB Rear