

US Tech Test Report:
FCC ID:
IC:
Test Report Number:
Issue Date:
Customer:
Model:

FCC Part 15 Certification/ RSS 210
KE3-30034451
2721A-30034451
23-0105, and 23-0107
July 11, 2023
Radio Systems Corporation
300-3445, and 300-34451-1

EXTERNAL PHOTOGRAPHS



Figure 1. Top of EUT, one-mile (300-3445)

Note: Cable indicated above are for programming purposes only

US Tech Test Report:
FCC ID:
IC:
Test Report Number:
Issue Date:
Customer:
Model:

FCC Part 15 Certification/ RSS 210
KE3-30034451
2721A-30034451
23-0105, and 23-0107
July 11, 2023
Radio Systems Corporation
300-3445, and 300-34451-1



Figure 2. Back of EUT, one-mile (300-3445)

US Tech Test Report:
FCC ID:
IC:
Test Report Number:
Issue Date:
Customer:
Model:

FCC Part 15 Certification/ RSS 210
KE3-30034451
2721A-30034451
23-0105, and 23-0107
July 11, 2023
Radio Systems Corporation
300-3445, and 300-34451-1



Figure 3. Left Side of EUT, one-mile (300-3445)

US Tech Test Report:
FCC ID:
IC:
Test Report Number:
Issue Date:
Customer:
Model:

FCC Part 15 Certification/ RSS 210
KE3-30034451
2721A-30034451
23-0105, and 23-0107
July 11, 2023
Radio Systems Corporation
300-3445, and 300-34451-1



Figure 4. Right Side of EUT, one-mile (300-3445)

US Tech Test Report:
FCC ID:
IC:
Test Report Number:
Issue Date:
Customer:
Model:

FCC Part 15 Certification/ RSS 210
KE3-30034451
2721A-30034451
23-0105, and 23-0107
July 11, 2023
Radio Systems Corporation
300-3445, and 300-34451-1



Figure 5. Front of EUT, one-mile (300-3445)

US Tech Test Report:
FCC ID:
IC:
Test Report Number:
Issue Date:
Customer:
Model:

FCC Part 15 Certification/ RSS 210
KE3-30034451
2721A-30034451
23-0105, and 23-0107
July 11, 2023
Radio Systems Corporation
300-3445, and 300-34451-1



Figure 6. Bottom of EUT, one-mile (300-3445)

US Tech Test Report:
FCC ID:
IC:
Test Report Number:
Issue Date:
Customer:
Model:

FCC Part 15 Certification/ RSS 210
KE3-30034451
2721A-30034451
23-0105, and 23-0107
July 11, 2023
Radio Systems Corporation
300-3445, and 300-34451-1



Figure 7. Antenna, one-mile (300-3445)

US Tech Test Report:
FCC ID:
IC:
Test Report Number:
Issue Date:
Customer:
Model:

FCC Part 15 Certification/ RSS 210
KE3-30034451
2721A-30034451
23-0105, and 23-0107
July 11, 2023
Radio Systems Corporation
300-3445, and 300-34451-1



Figure 8. Top of EUT, Half-Mile (300-3445-1)

US Tech Test Report:
FCC ID:
IC:
Test Report Number:
Issue Date:
Customer:
Model:

FCC Part 15 Certification/ RSS 210
KE3-30034451
2721A-30034451
23-0105, and 23-0107
July 11, 2023
Radio Systems Corporation
300-3445, and 300-34451-1



Figure 9. Back of EUT, Half-Mile (300-3445-1)

US Tech Test Report:
FCC ID:
IC:
Test Report Number:
Issue Date:
Customer:
Model:

FCC Part 15 Certification/ RSS 210
KE3-30034451
2721A-30034451
23-0105, and 23-0107
July 11, 2023
Radio Systems Corporation
300-3445, and 300-34451-1



Figure 10. Left Side of EUT, Half-Mile (300-3445-1)

US Tech Test Report:
FCC ID:
IC:
Test Report Number:
Issue Date:
Customer:
Model:

FCC Part 15 Certification/ RSS 210
KE3-30034451
2721A-30034451
23-0105, and 23-0107
July 11, 2023
Radio Systems Corporation
300-3445, and 300-34451-1



Figure 11. Right Side of EUT, Half-Mile (300-3445-1)

US Tech Test Report:
FCC ID:
IC:
Test Report Number:
Issue Date:
Customer:
Model:

FCC Part 15 Certification/ RSS 210
KE3-30034451
2721A-30034451
23-0105, and 23-0107
July 11, 2023
Radio Systems Corporation
300-3445, and 300-34451-1



Figure 12. Front of EUT, Half-Mile (300-3445-1)

US Tech Test Report:
FCC ID:
IC:
Test Report Number:
Issue Date:
Customer:
Model:

FCC Part 15 Certification/ RSS 210
KE3-30034451
2721A-30034451
23-0105, and 23-0107
July 11, 2023
Radio Systems Corporation
300-3445, and 300-34451-1

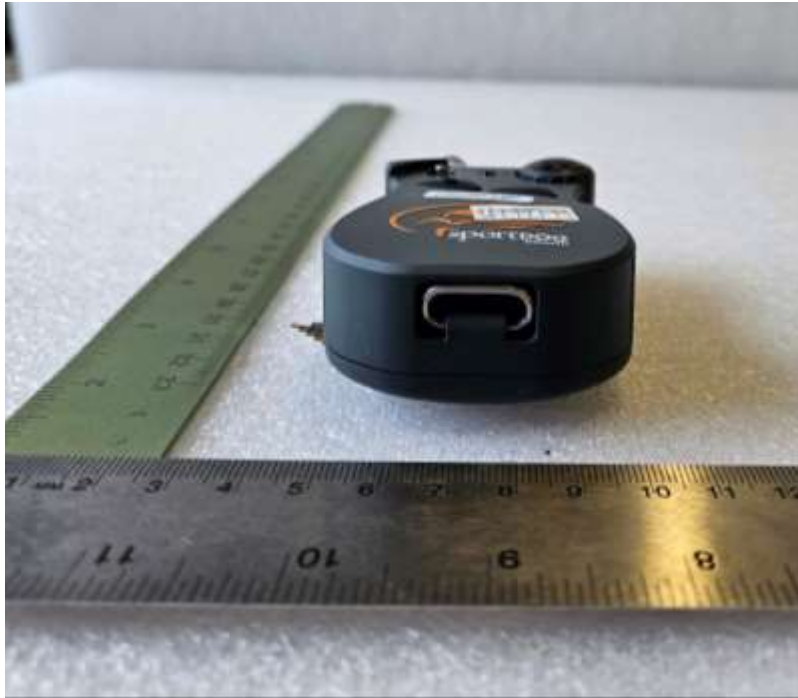


Figure 13. Bottom of EUT, Half-Mile (300-3445-1)