

US Tech Test Report:
FCC ID:
IC:
Test Report Number:
Issue Date:
Customer:
Model:

FCC Part 15 Certification/ RSS 210
KE3-30034451
2721A-30034451
23-0105, and 23-0107
July 11, 2023
Radio Systems Corporation
300-3445, and 300-34451-1

INTERNAL PHOTOGRAPHS

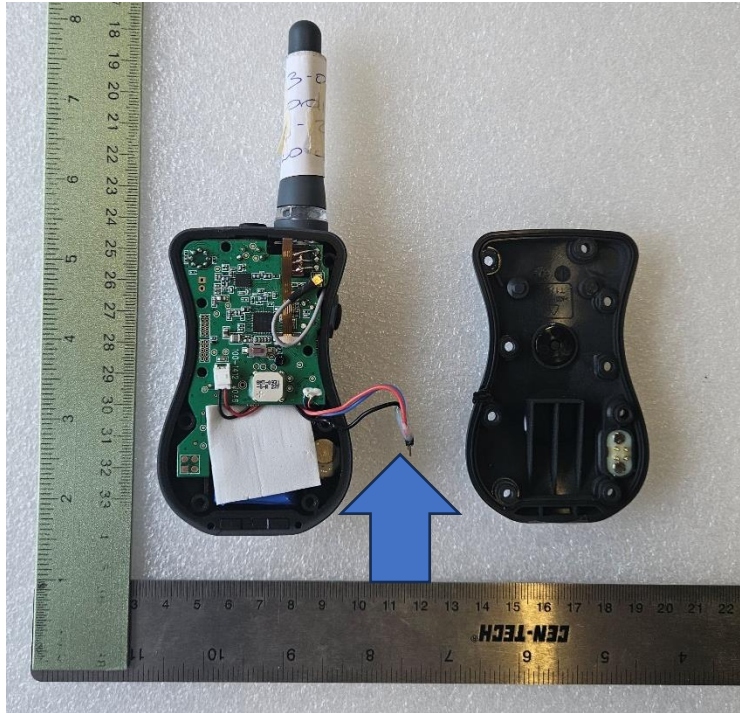


Figure 1. Back Cover Removed, One-Mile (300-3445)

Note: Cable indicated above are for programming purposes only

US Tech Test Report:
FCC ID:
IC:
Test Report Number:
Issue Date:
Customer:
Model:

FCC Part 15 Certification/ RSS 210
KE3-30034451
2721A-30034451
23-0105, and 23-0107
July 11, 2023
Radio Systems Corporation
300-3445, and 300-34451-1

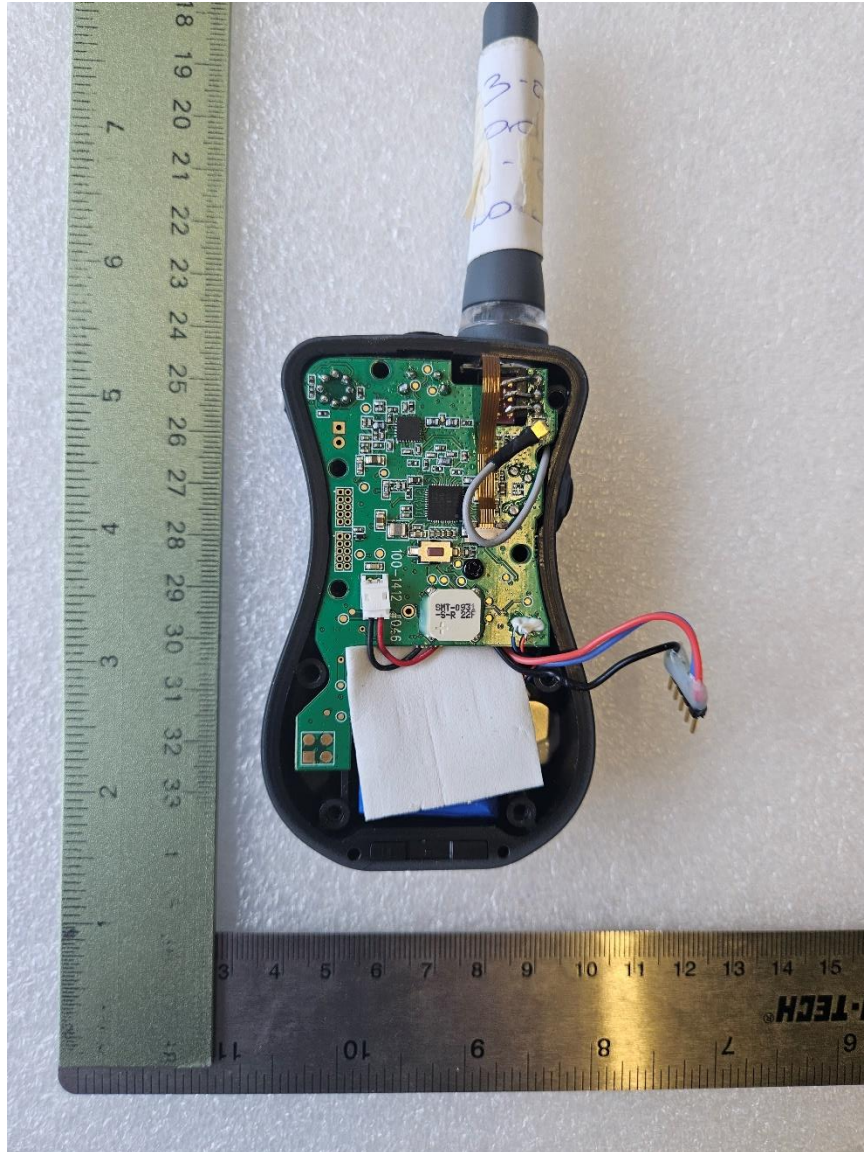


Figure 2. Main PCB Front, One-Mile (300-3445)

US Tech Test Report:
FCC ID:
IC:
Test Report Number:
Issue Date:
Customer:
Model:

FCC Part 15 Certification/ RSS 210
KE3-30034451
2721A-30034451
23-0105, and 23-0107
July 11, 2023
Radio Systems Corporation
300-3445, and 300-34451-1

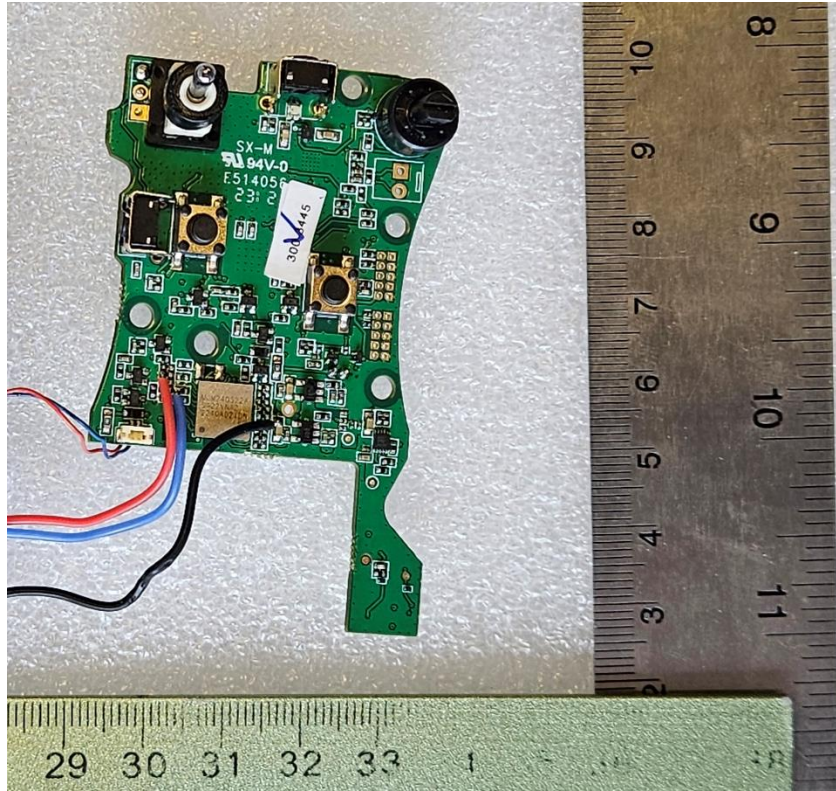


Figure 3. Main PCB Back, One-Mile (300-3445)

US Tech Test Report:
FCC ID:
IC:
Test Report Number:
Issue Date:
Customer:
Model:

FCC Part 15 Certification/ RSS 210
KE3-30034451
2721A-30034451
23-0105, and 23-0107
July 11, 2023
Radio Systems Corporation
300-3445, and 300-34451-1

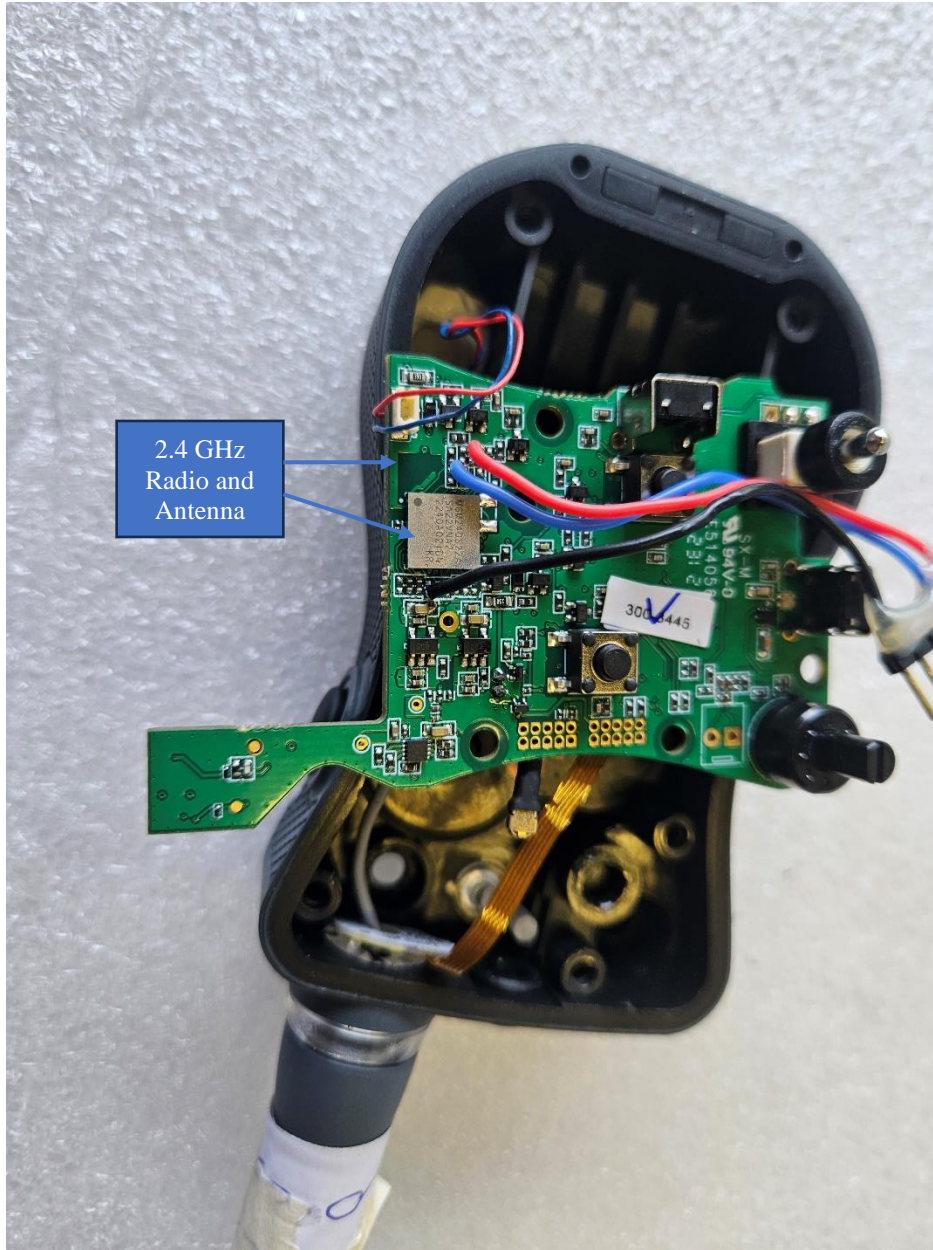


Figure 4. Close up of 2.4 GHz Radio, One-Mile (300-3445)

US Tech Test Report:
FCC ID:
IC:
Test Report Number:
Issue Date:
Customer:
Model:

FCC Part 15 Certification/ RSS 210
KE3-30034451
2721A-30034451
23-0105, and 23-0107
July 11, 2023
Radio Systems Corporation
300-3445, and 300-34451-1

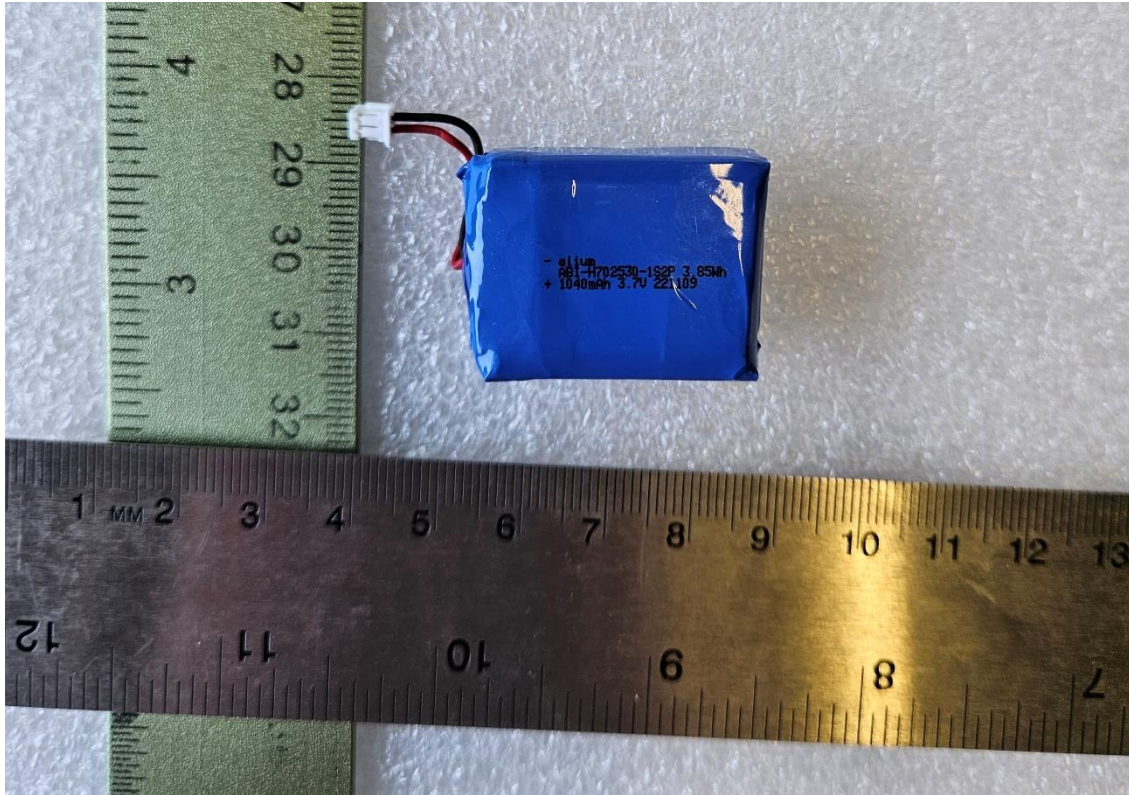


Figure 5. Battery, One-Mile (300-3445)

US Tech Test Report:
FCC ID:
IC:
Test Report Number:
Issue Date:
Customer:
Model:

FCC Part 15 Certification/ RSS 210
KE3-30034451
2721A-30034451
23-0105, and 23-0107
July 11, 2023
Radio Systems Corporation
300-3445, and 300-34451-1

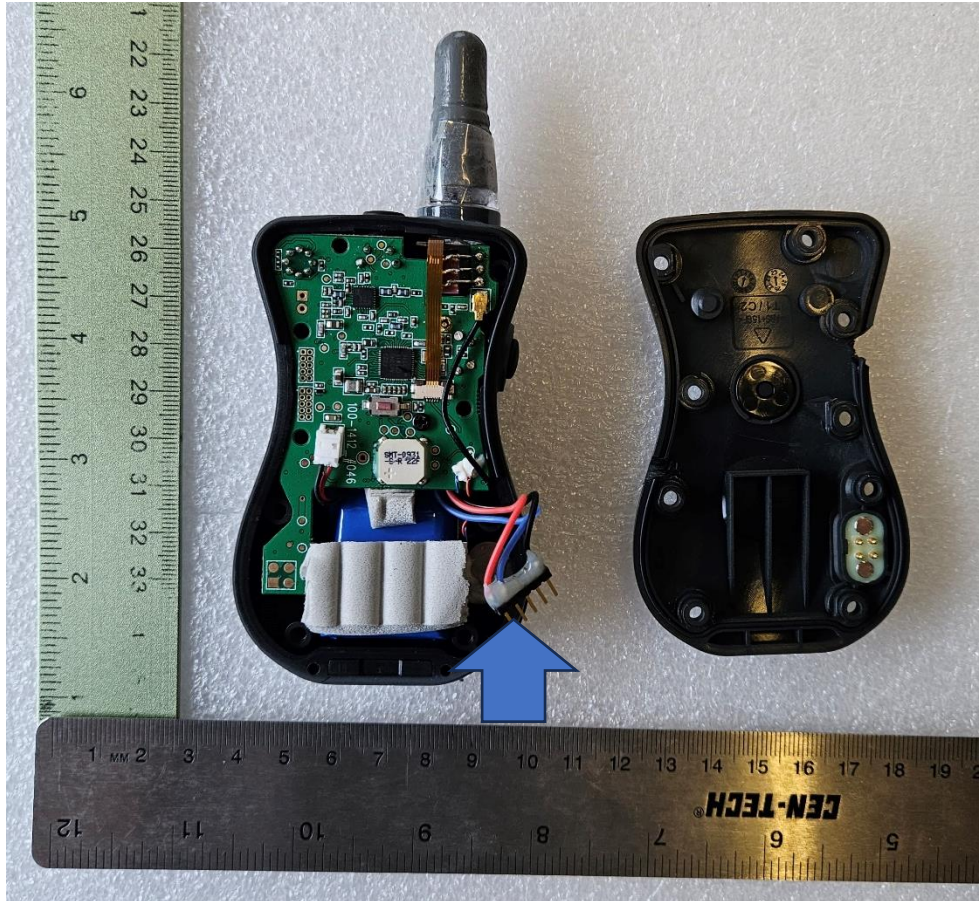


Figure 6. Back Cover Removed, Half-Mile (300-34451-1)

Note: Cables indicated above are for programming purposes only

US Tech Test Report:
FCC ID:
IC:
Test Report Number:
Issue Date:
Customer:
Model:

FCC Part 15 Certification/ RSS 210
KE3-30034451
2721A-30034451
23-0105, and 23-0107
July 11, 2023
Radio Systems Corporation
300-3445, and 300-34451-1

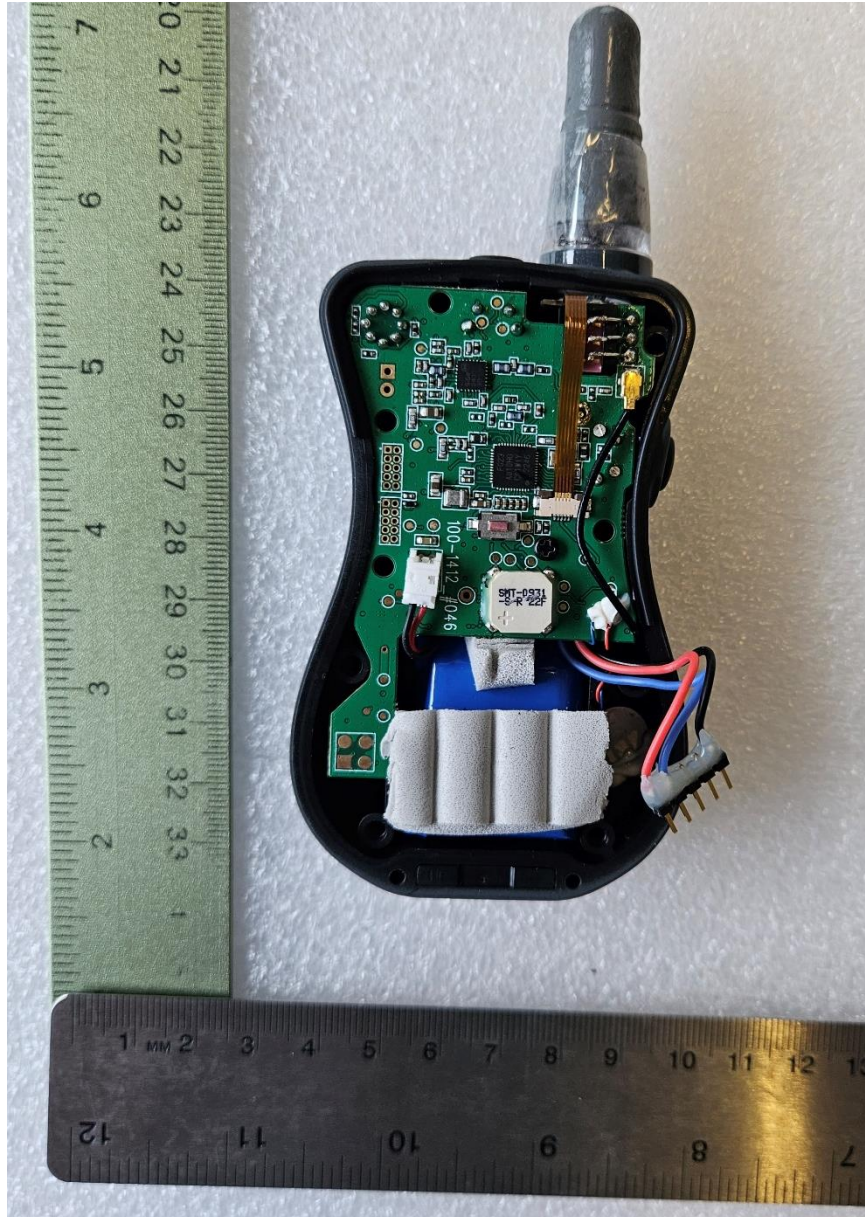


Figure 7. Main PCB Front, Half-Mile (300-34451-1)

US Tech Test Report:
FCC ID:
IC:
Test Report Number:
Issue Date:
Customer:
Model:

FCC Part 15 Certification/ RSS 210
KE3-30034451
2721A-30034451
23-0105, and 23-0107
July 11, 2023
Radio Systems Corporation
300-3445, and 300-34451-1

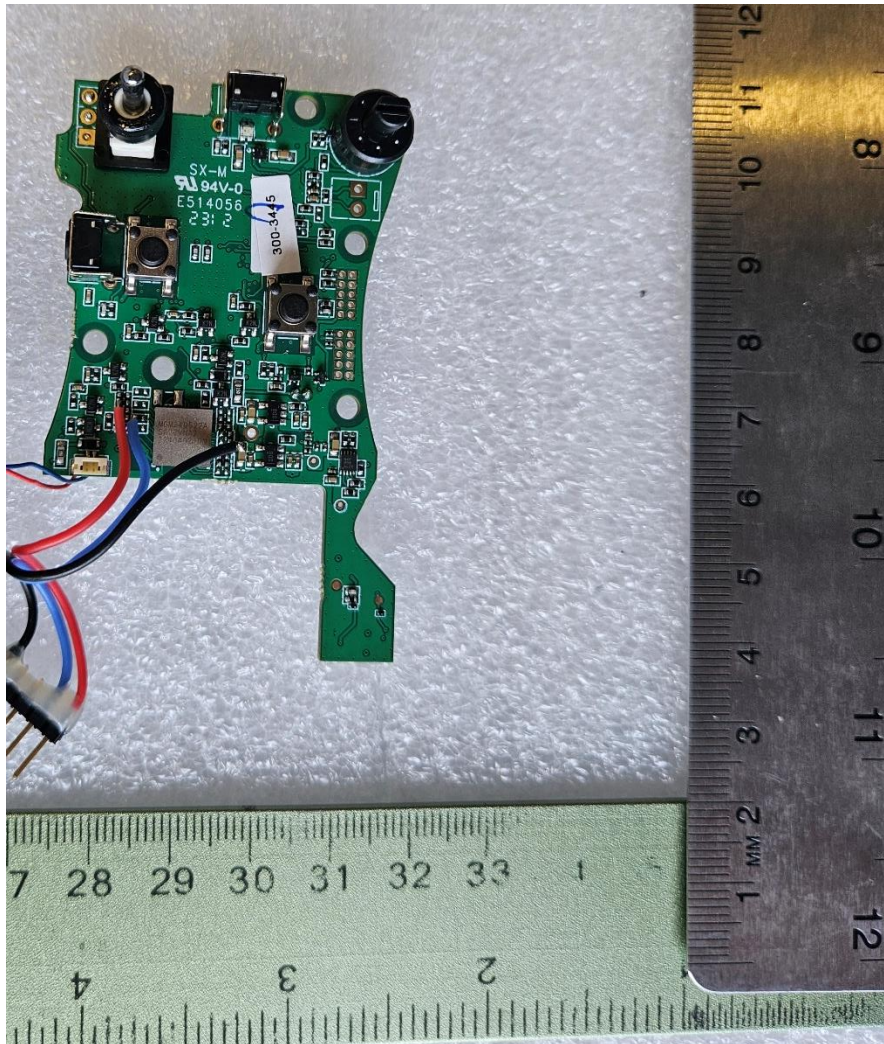


Figure 8. Main PCB Back, Half-Mile (300-34451-1)

US Tech Test Report:
FCC ID:
IC:
Test Report Number:
Issue Date:
Customer:
Model:

FCC Part 15 Certification/ RSS 210
KE3-30034451
2721A-30034451
23-0105, and 23-0107
July 11, 2023
Radio Systems Corporation
300-3445, and 300-34451-1

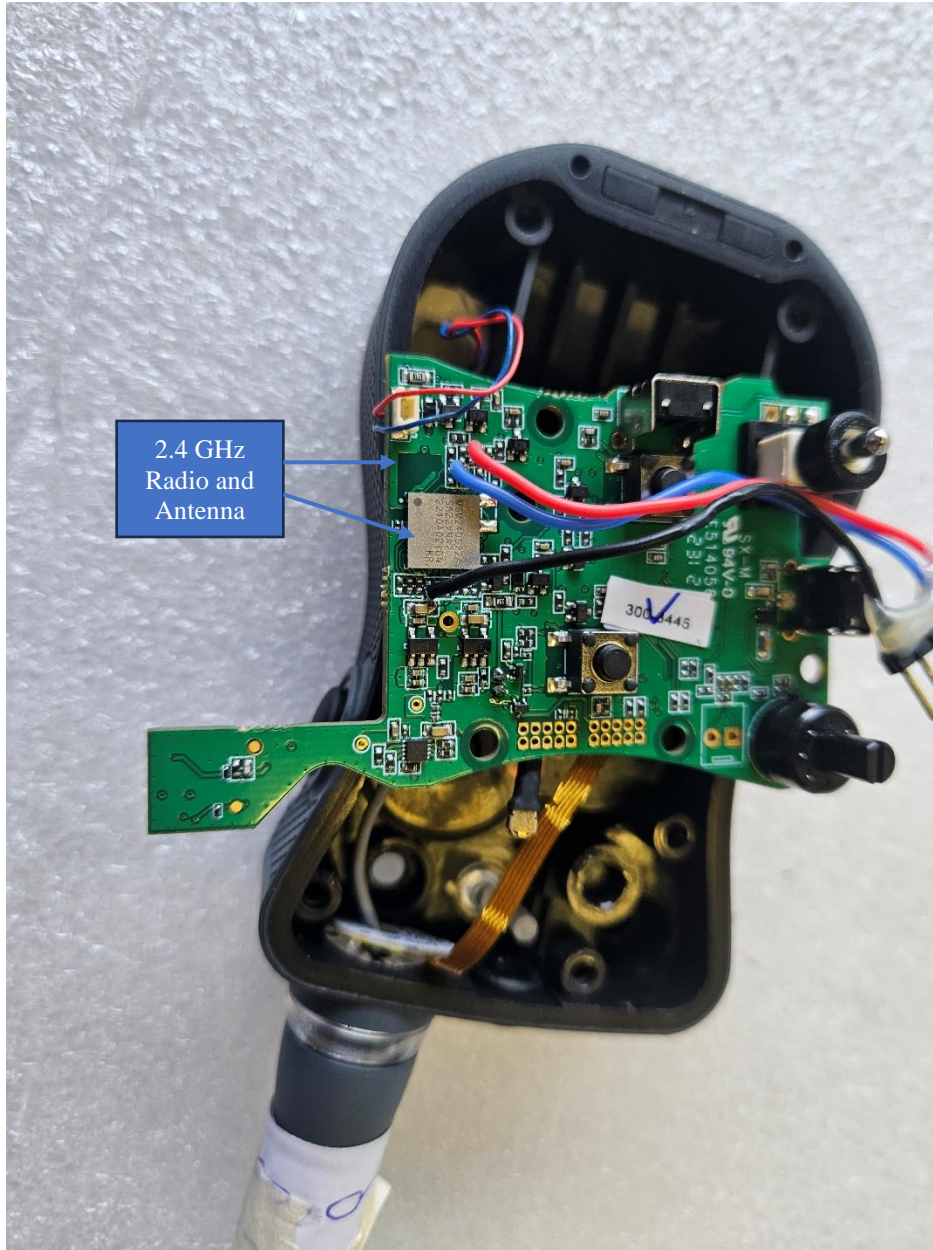


Figure 9. Close up of 2.4 GHz Radio, Half-Mile (300-34451-1)

US Tech Test Report:
FCC ID:
IC:
Test Report Number:
Issue Date:
Customer:
Model:

FCC Part 15 Certification/ RSS 210
KE3-30034451
2721A-30034451
23-0105, and 23-0107
July 11, 2023
Radio Systems Corporation
300-3445, and 300-34451-1

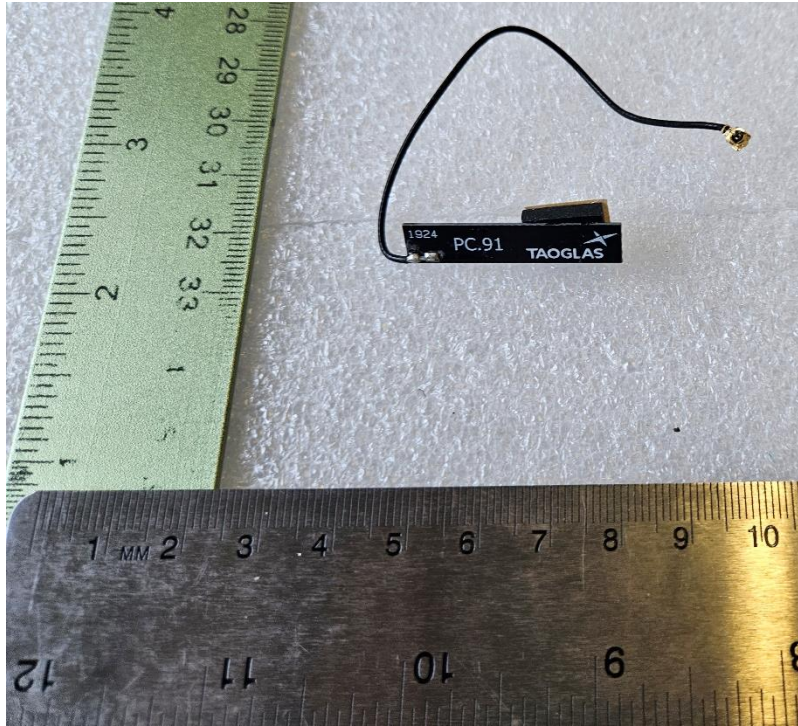


Figure 10. Antenna, Half-Mile (300-34451-1)

US Tech Test Report:
FCC ID:
IC:
Test Report Number:
Issue Date:
Customer:
Model:

FCC Part 15 Certification/ RSS 210
KE3-30034451
2721A-30034451
23-0105, and 23-0107
July 11, 2023
Radio Systems Corporation
300-3445, and 300-34451-1

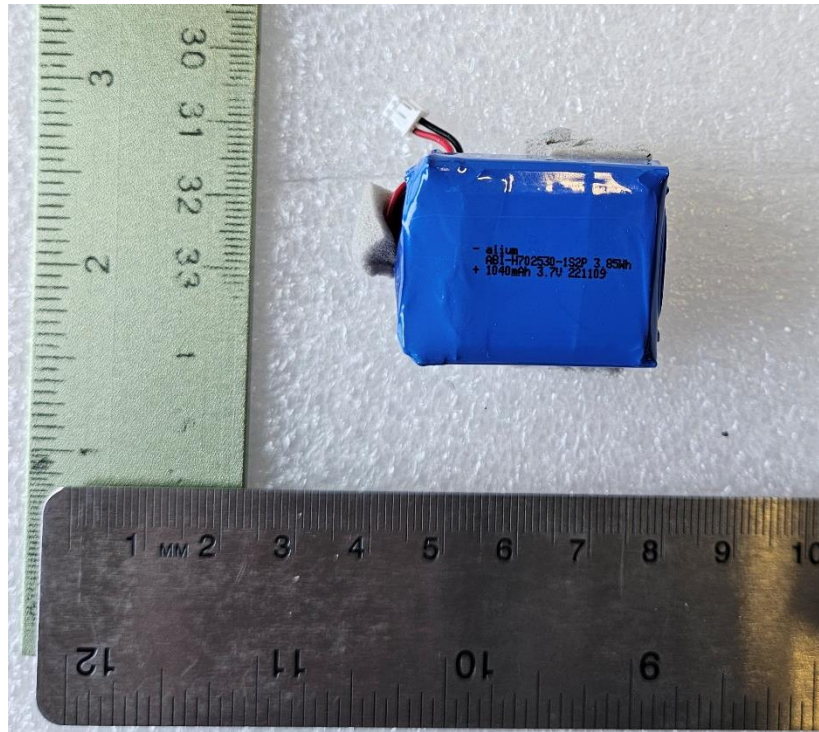


Figure 11. Battery, Half-Mile (300-34451-1)