

US Tech Test Report:
FCC ID:
IC:
Test Report Number:
Issue Date:
Customer:
Model:

FCC Part 15 Certification/ RSS 210
KE3-3003227
2721A-3003227
17-0149
July 18, 2017
Radio Systems
FS-TRN

INTERNAL PHOTOGRAPHS

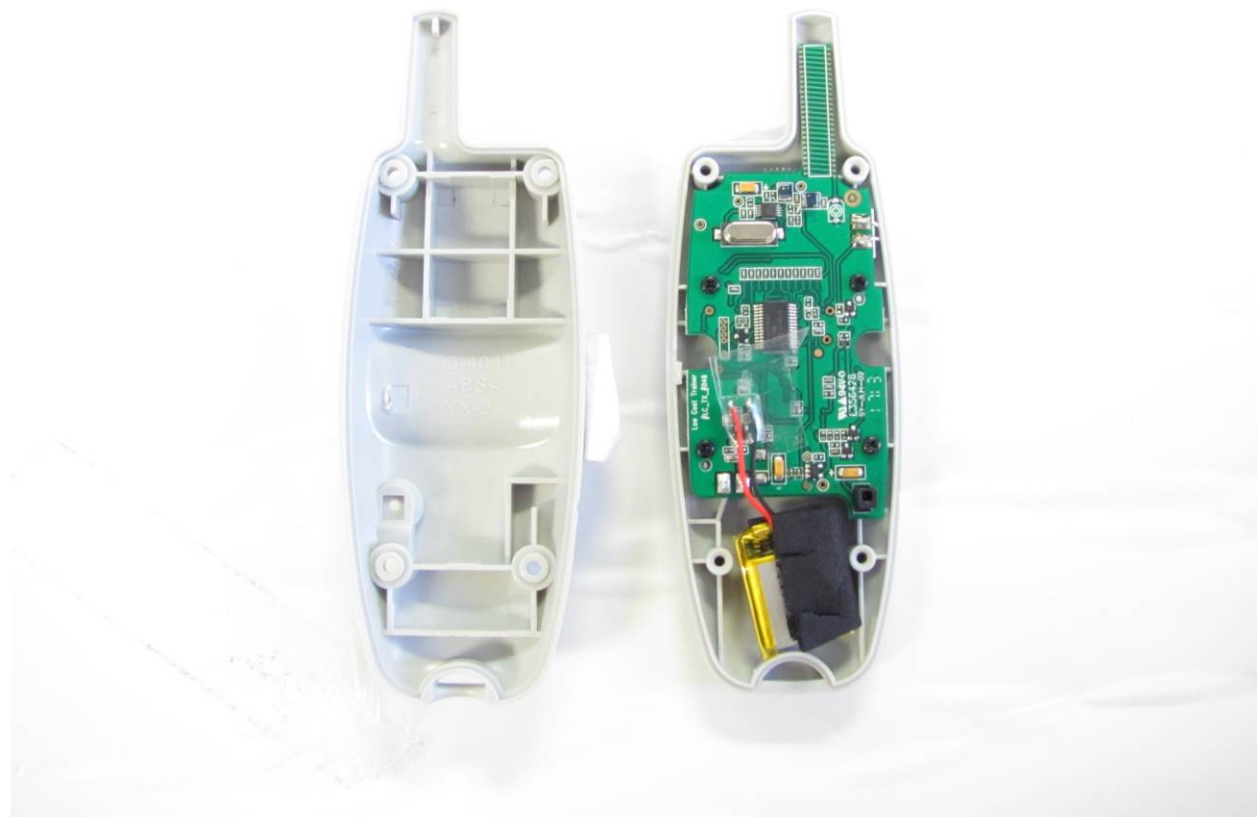


Figure 1. Enclosure Open

US Tech Test Report:
FCC ID:
IC:
Test Report Number:
Issue Date:
Customer:
Model:

FCC Part 15 Certification/ RSS 210
KE3-3003227
2721A-3003227
17-0149
July 18, 2017
Radio Systems
FS-TRN



Figure 2. PCB Exposed, Battery Removed

US Tech Test Report:
FCC ID:
IC:
Test Report Number:
Issue Date:
Customer:
Model:

FCC Part 15 Certification/ RSS 210
KE3-3003227
2721A-3003227
17-0149
July 18, 2017
Radio Systems
FS-TRN

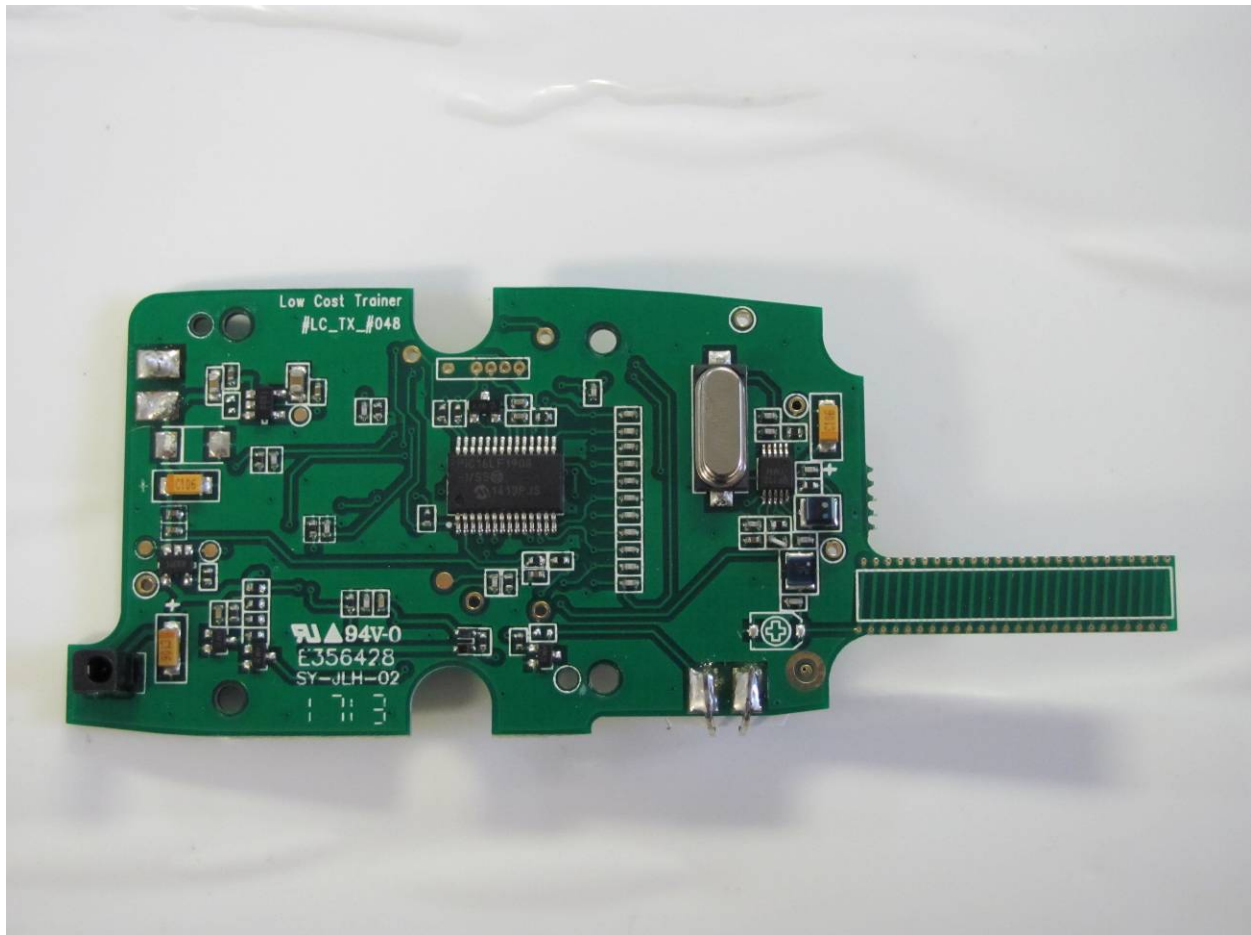


Figure 3. PCB, Component Side

US Tech Test Report:
FCC ID:
IC:
Test Report Number:
Issue Date:
Customer:
Model:

FCC Part 15 Certification/ RSS 210
KE3-3003227
2721A-3003227
17-0149
July 18, 2017
Radio Systems
FS-TRN

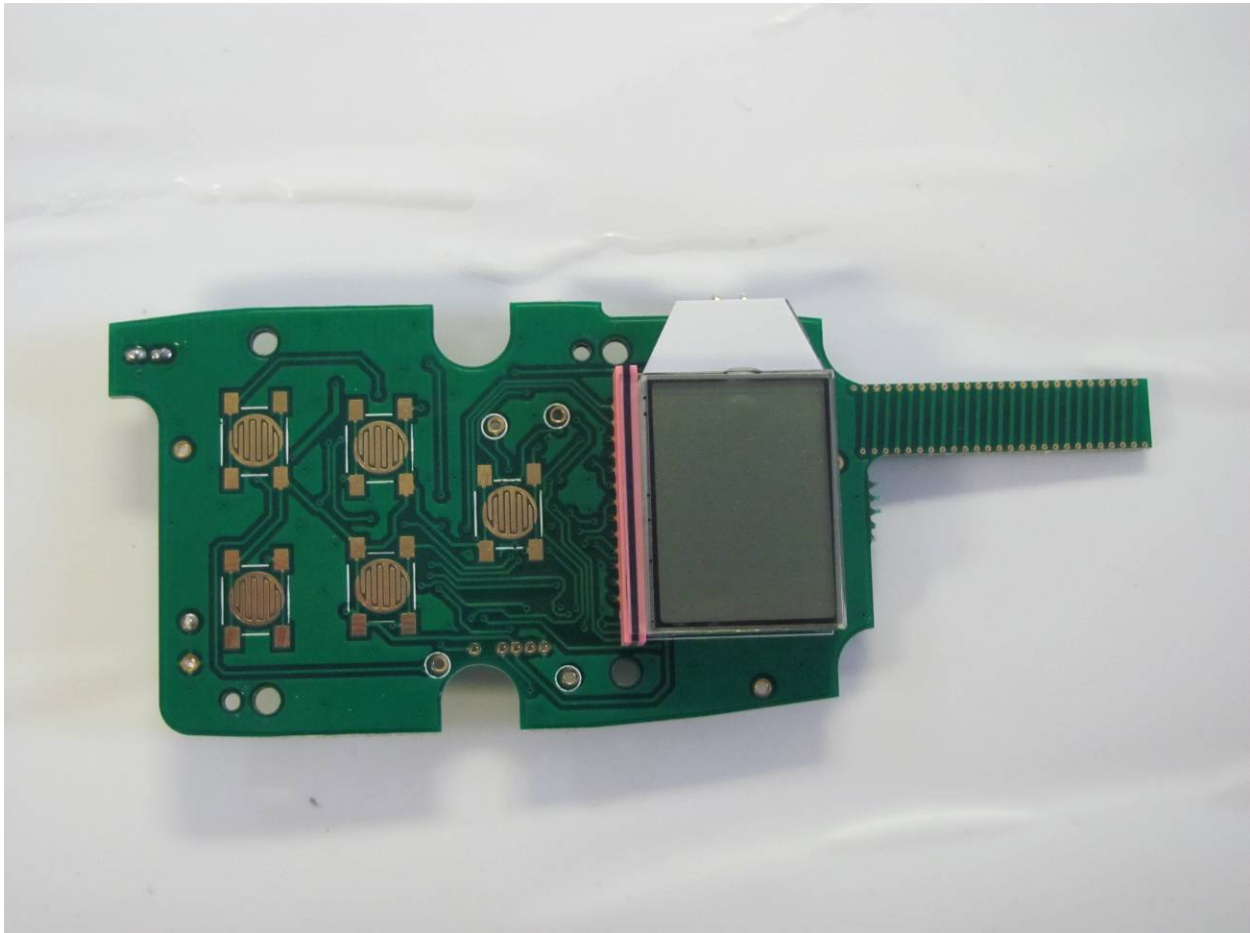


Figure 4. PCB, LCD Display Side

Note: No components underneath the LCD display. LCD is soldered to the PCB.