

Test Configuration Photographs

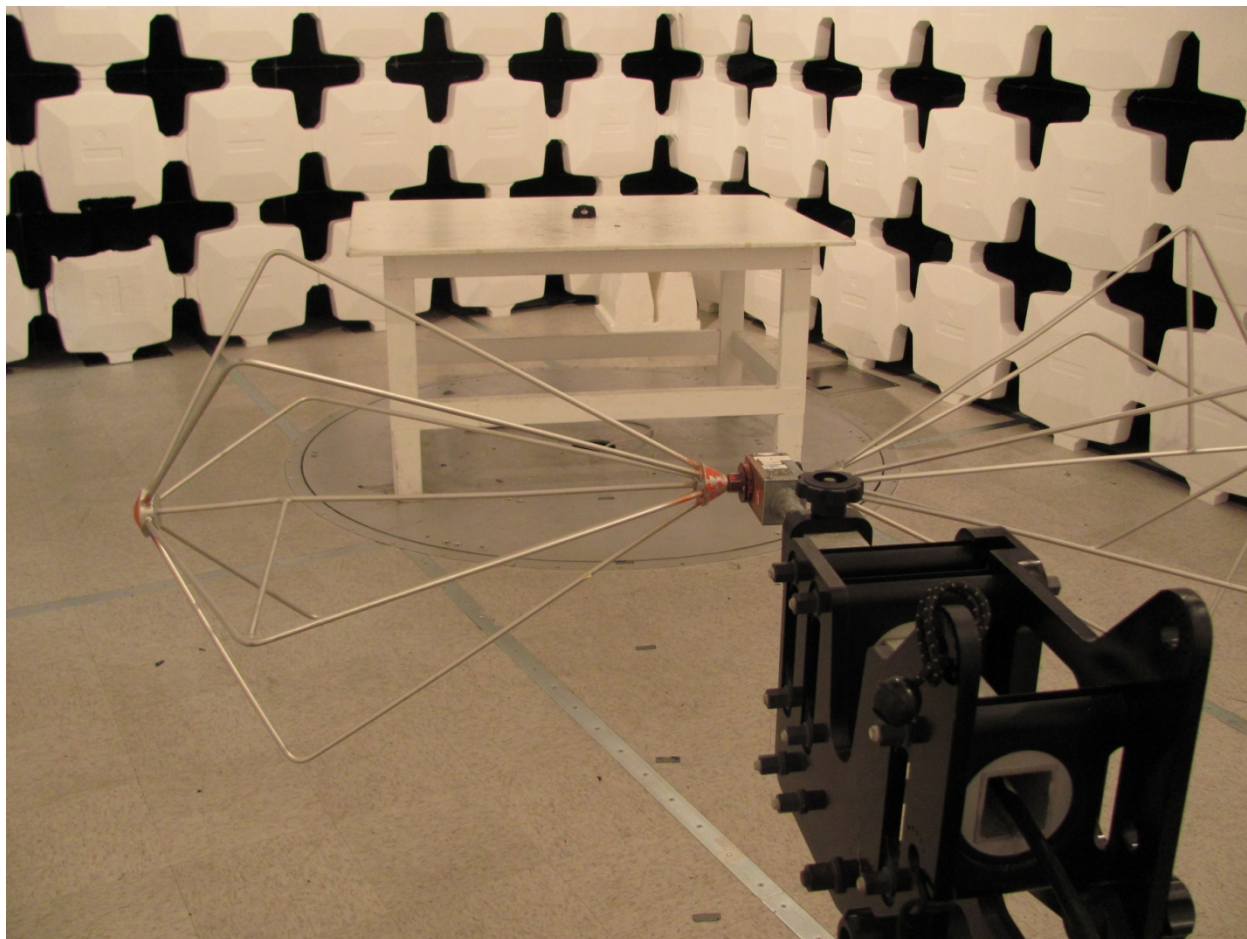


Figure 1. Radiated Emissions Test Configuration (below 200 MHz)

US Tech Test Report
FCC ID:
Test Report Number:
Issue date:
Customer:
Model:

Part 95J
KE3-3003170
18-0013
March 9, 2018
Radio Systems Corp
RIF00-15976

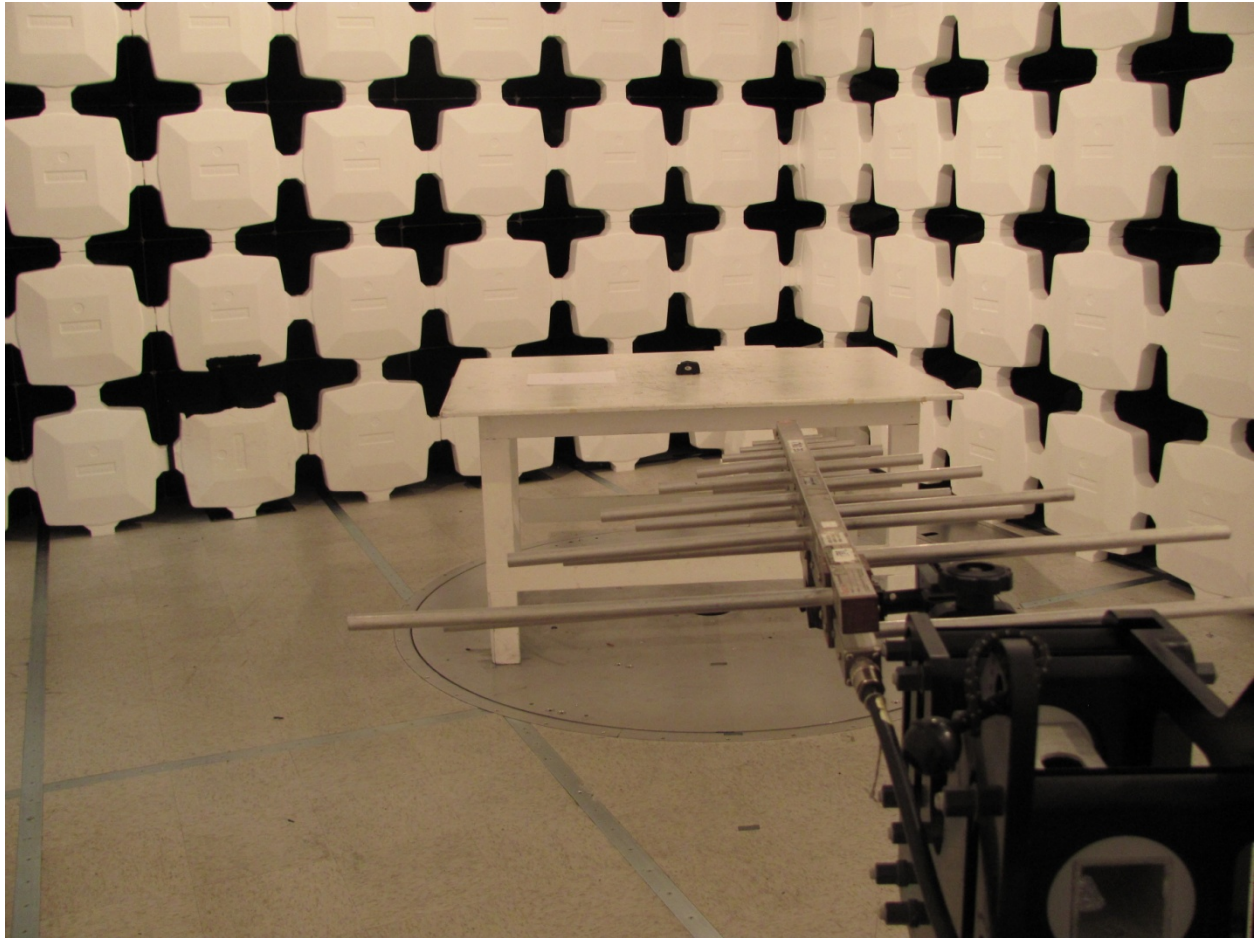


Figure 2. Radiated Emissions Test Configuration (200 MHz to 1 GHz)

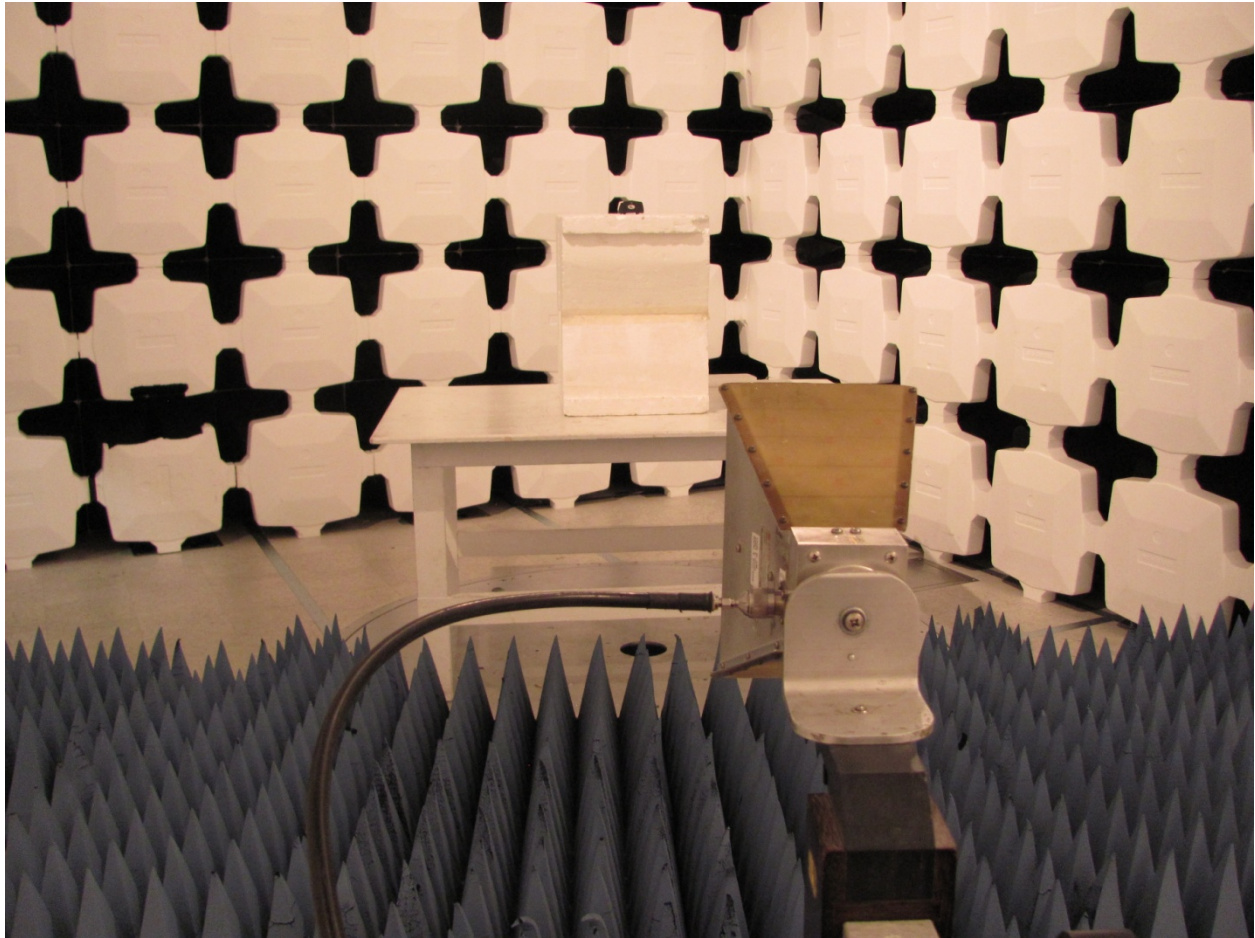


Figure 3. Radiated Emissions Test Configuration (above 1 GHz)

US Tech Test Report
FCC ID:
Test Report Number:
Issue date:
Customer:
Model:

Part 95J
KE3-3003170
18-0013
March 9, 2018
Radio Systems Corp
RIF00-15976

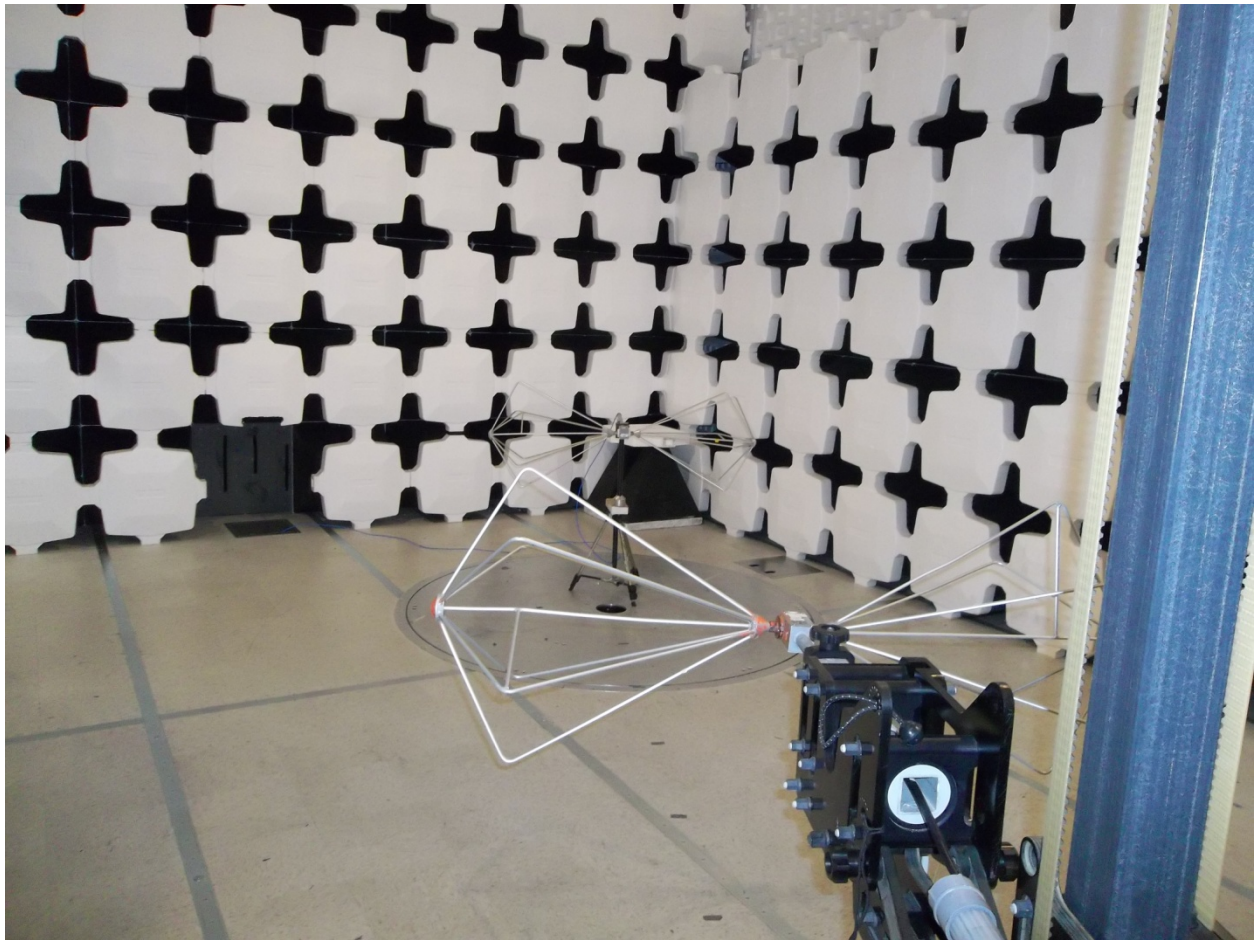


Figure 4. Substitution Setup (below 200 MHz)

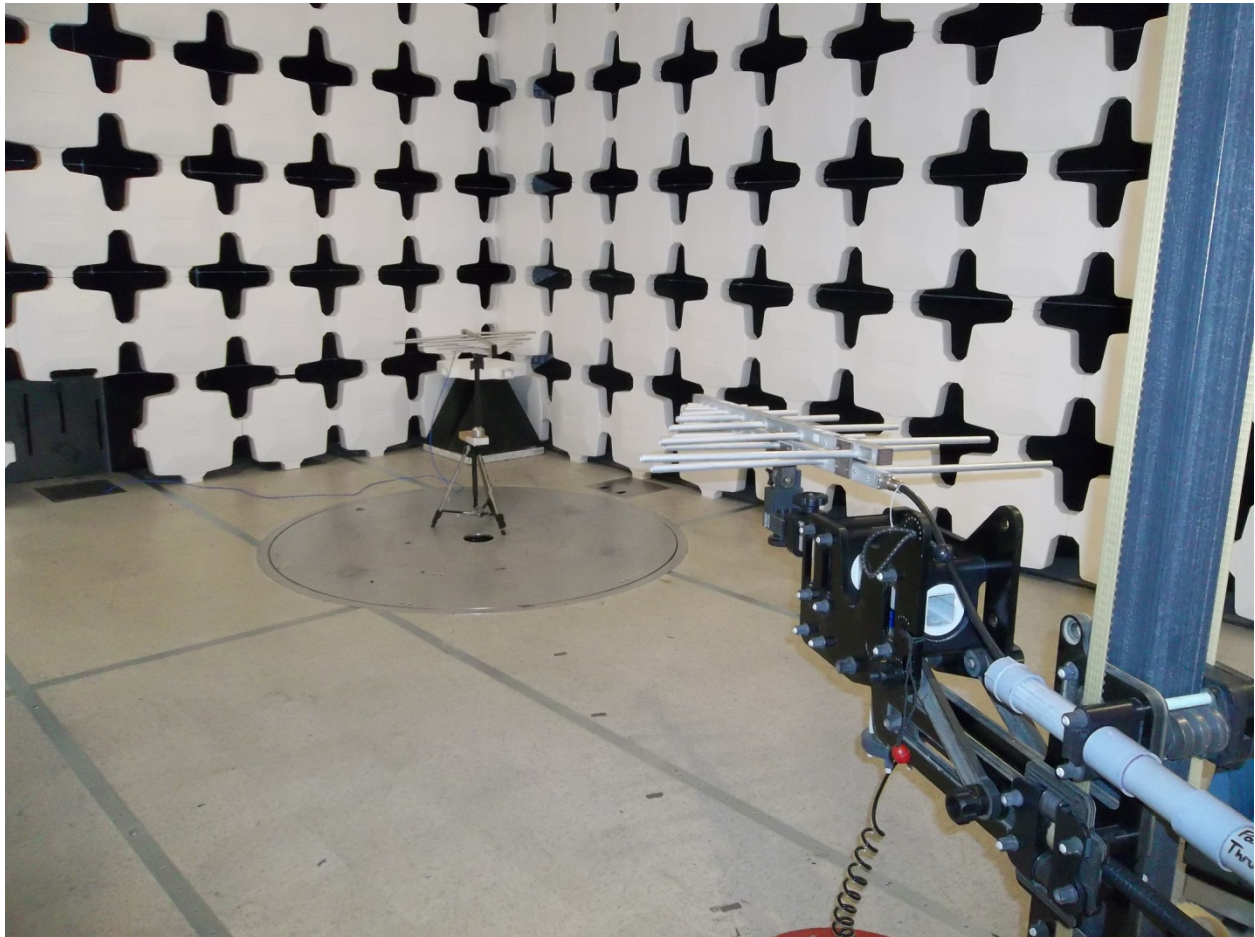


Figure 5. Substitution Setup (200 MHz to 1 GHz)



Figure 6. Substitution Setup (above 1 GHz)

US Tech Test Report
FCC ID:
Test Report Number:
Issue date:
Customer:
Model:

Part 95J
KE3-3003170
18-0013
March 9, 2018
Radio Systems Corp
RIF00-15976



Figure 7. Frequency Stability Testing

US Tech Test Report
FCC ID:
Test Report Number:
Issue date:
Customer:
Model:

Part 95J
KE3-3003170
18-0013
March 9, 2018
Radio Systems Corp
RIF00-15976

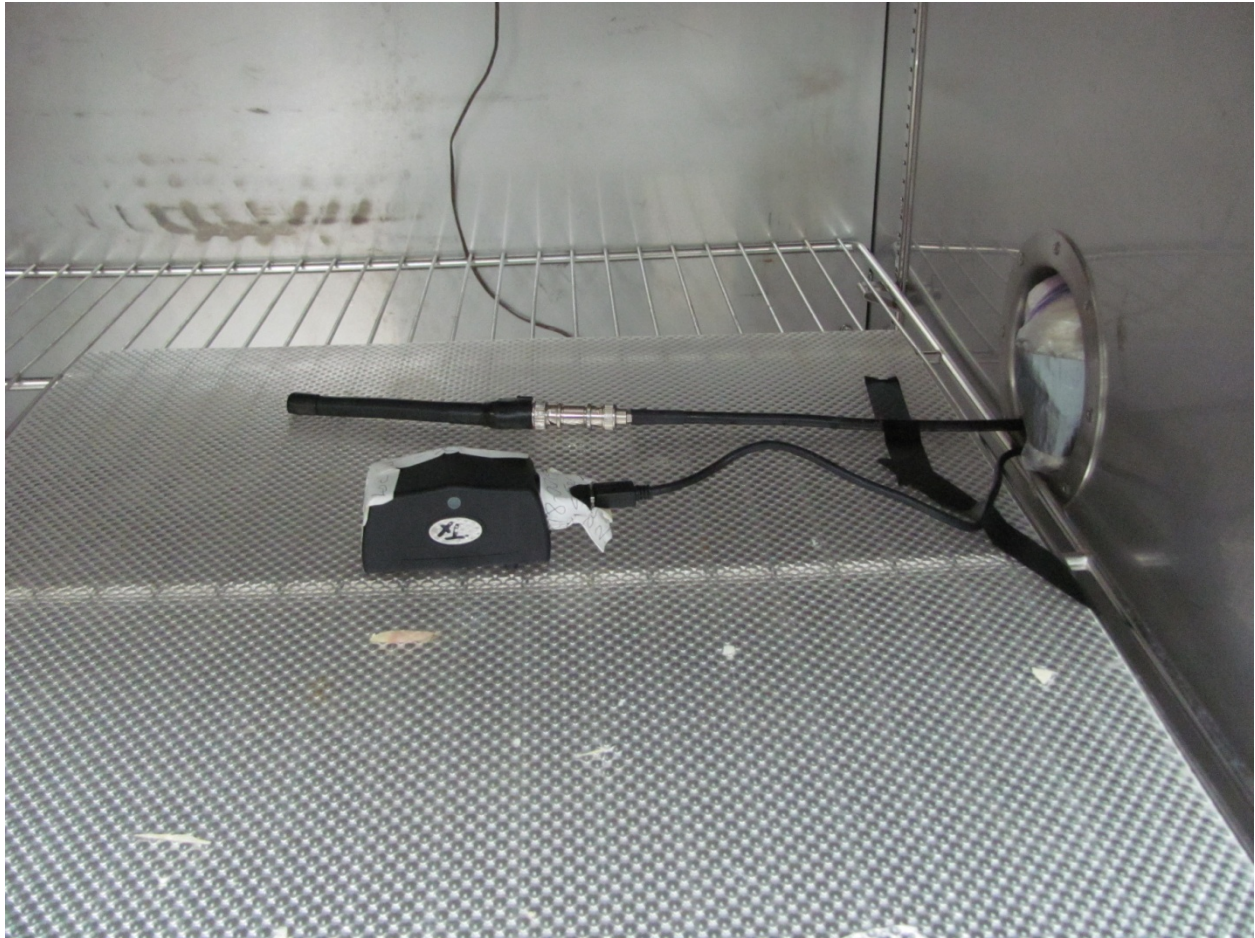


Figure 8. EUT Inside Temperature Chamber