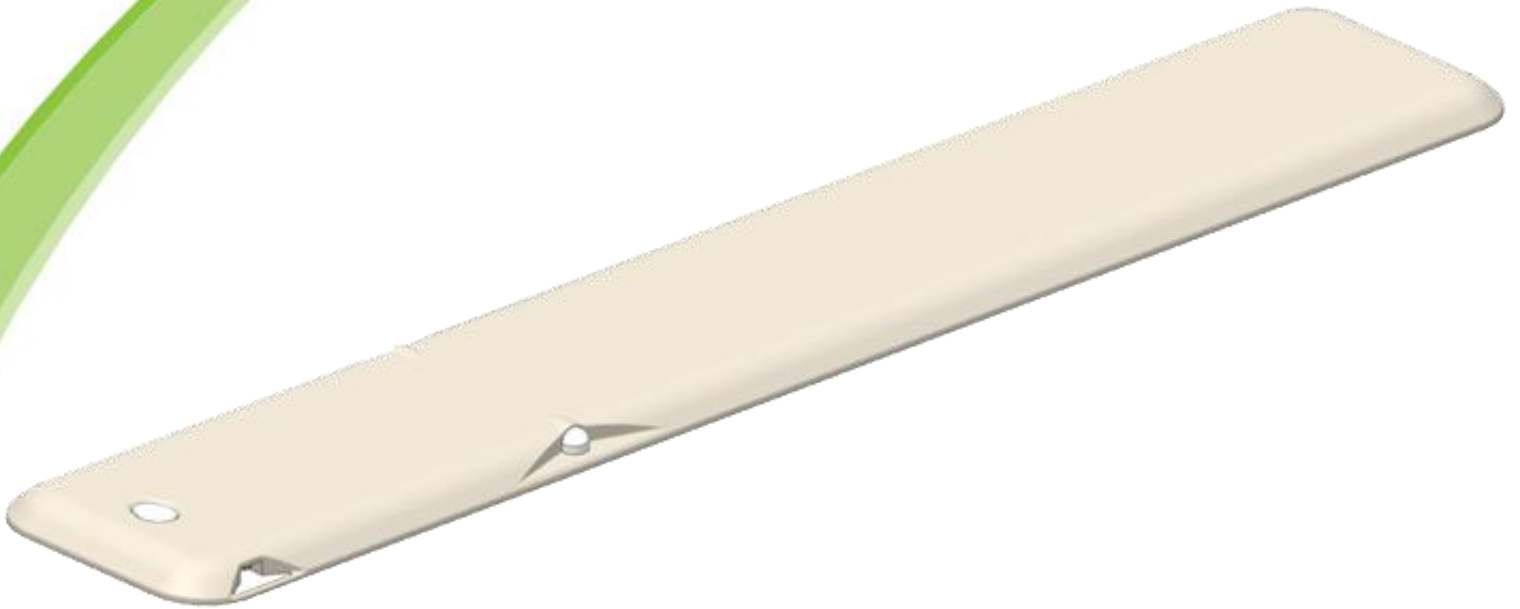




**Invisible
Fence** Brand

Shields[®]

Avoidance Solutions



Invisible Gate[®] Plus

Owner's Manual

Please read this entire guide before operating.

www.InvisibleFence.com

Important Precautions

- Invisible Fence® Brand pet containment systems have contained over two million pets. However, there are some precautions you should take.
- Read and retain manuals: Read the entire Owner's Manual before using your new Invisible Gate® Plus solution. If you have any questions after reading this manual, call your Invisible Fence® Brand dealer.
- Adhere to all warnings and cautions contained in any Invisible Fence® Brand manual.

Explanation of Attention Words and Symbols used in this guide



This is the safety alert symbol. It is used to alert you to potential personal injury hazards. Obey all safety messages that follow this symbol to avoid possible injury or death.

⚠ WARNING

WARNING indicates a hazardous situation which, if not avoided, could result in death or serious injury.

⚠ CAUTION

CAUTION used with the safety alert symbol, indicates a hazardous situation which, if not avoided, could result in minor or moderate injury.

CAUTION

CAUTION used without the safety alert symbol, indicates a hazardous situation which, if not avoided, could result in harm to your pet.

NOTICE

NOTICE is used to address safe use practices not related to personal injury.

⚠ WARNING

- Not every pet can be trained to avoid the established boundary. Sometimes even a properly trained pet may cross the boundary. Therefore, Invisible Fence, Inc., as well as Invisible Fence® Brand Distributors and Dealers cannot guarantee the system will, in all cases, keep a customer's pet within the established boundary. Accordingly, if a customer has reason to believe that their pet may pose a danger to others, or harm itself, the customer should not rely solely upon the Invisible Fence® Brand system to keep the pet from crossing the boundary.
- Do not install, connect, or remove your system during a lightning storm. If the storm is close enough for you to hear thunder, it is close enough to create hazardous surges.

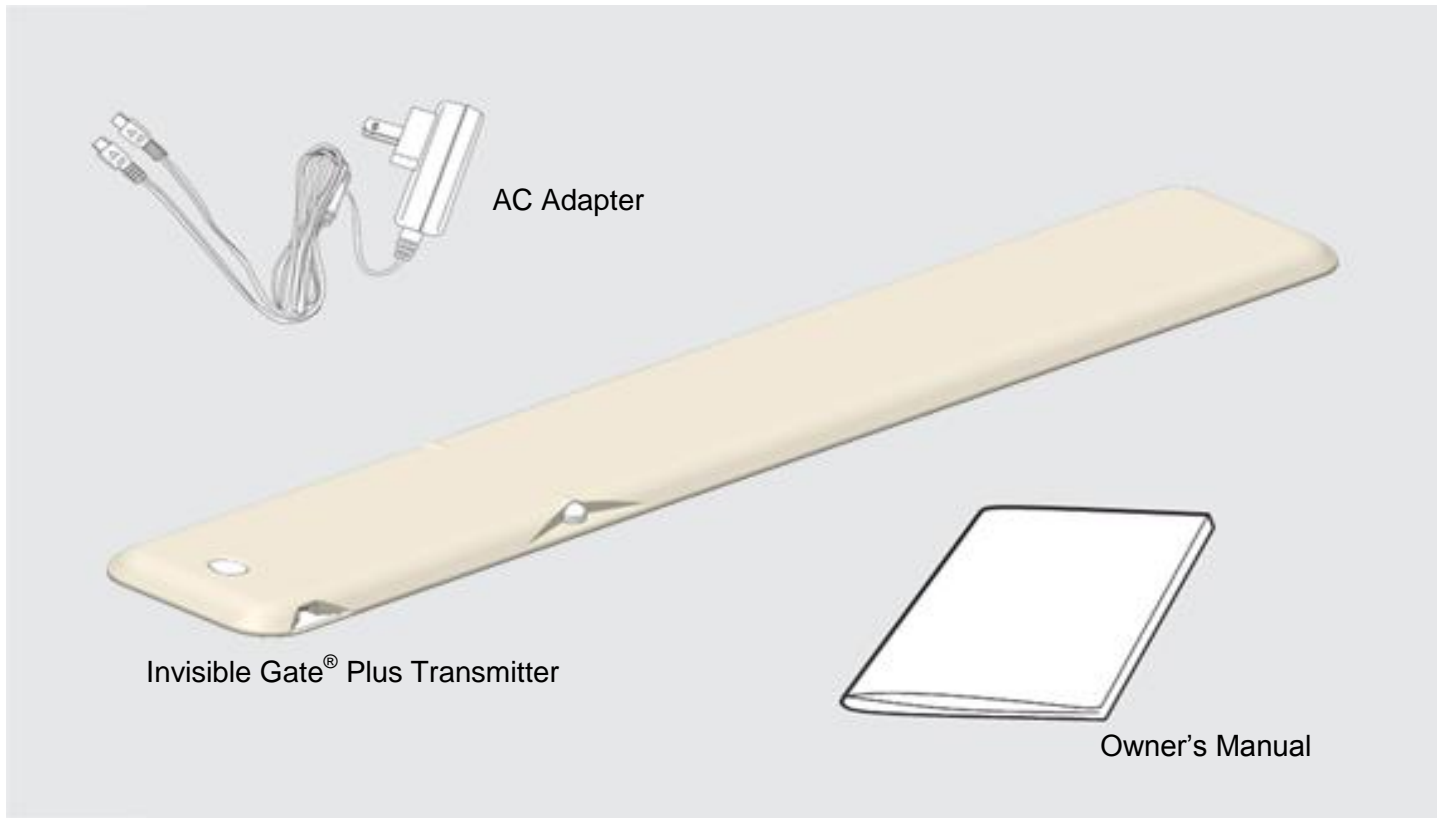
⚠ CAUTION

- Read and follow the important tips on how to avoid pressure necrosis in your Invisible Fence® Brand Computer Collar® unit manual.
- Train your pet according to the instructions in the Invisible Fence® Brand training protocols. Complete all steps before allowing your pet to run free. Do not become overly confident if your pet has become conditioned to the Invisible Fence® Brand pet containment system sooner than expected.
- Your Invisible Fence® Brand dealer has professionally installed your pet avoidance system and ensured it is working properly. You will want to perform periodic maintenance checks to make sure the system is properly functioning.
- Check the Invisible Fence® Brand transmitter periodically to make sure it is operating properly. To do this, simply bring the Computer Collar® unit to the edge of the signal field to verify function.
- Do not attempt to service any Invisible Fence® Brand equipment. Refer all service to your authorized Invisible Fence® Brand dealer. Only your authorized Invisible Fence® Brand dealer should make adjustments to your pet avoidance/containment system.
- All Invisible Fence® Brand pet containment systems are designed for domesticated animal use only. Never attempt to use this product for any purpose not specifically described in this manual.
- Congratulations on your purchase of the Invisible Gate® Plus solution. Please read and review this entire manual to become familiar with Invisible Gate® Plus solution components and its operation. It is strongly recommended you review this information before using the product.
- The Invisible Gate® Plus solution gives you control over the areas a pet or pets have access to inside your home. It is designed to work independently or to complement your Invisible Fence® Brand 800 Series and/or Boundary Plus® digital electronic pet containment system. The Invisible Gate® Plus transmitter is designed for indoor use only. For information on or about Outdoor Shields® products, please contact your local Invisible Fence® Brand dealer or visit us at www.invisiblefence.com. This device is not designed to operate as a containment transmitter.
- Important: To ensure your pet does not receive an unintended correction, make sure your pet is not wearing the Computer Collar® Unit when turning ON or adjusting the Invisible Gate® Plus transmitter.

Table of Contents

Important Precautions	2-3
Components.....	5
How the System Works	5
Operating Guide.....	6
Charging	6
Turning On and Off	6
Control Panel.....	7
Shields® Operation	7-8
Adjust Signal Field Range	7
Verify Signal Field Range	8
Changing the Channel Setting	8
Boundary Plus® Operation.....	8-9
Adjust Signal Field Range	8
Verify Signal Field Range	9
Multi-Area Avoidance	9
Programming the Computer Collar® Unit	10
Training Guide	11
For Pets trained to the Invisible Fence® Brand Outdoor Pet Containment System	10
For Pets New to Invisible Fence® Brand	10
Troubleshooting	11
Battery Disposal	12
Perchlorate Battery	13
Important Recycling Advice	13
Compliance	14

Components



How the System Works

Invisible Gate® Plus Transmitter

The transmitter is the heart of the system. It produces a signal that communicates with your pet's Computer Collar® unit to keep your pet away from unwanted areas. The transmitter creates a signal field up to 40 inches from the unit and can be set to activate a Computer Collar® unit as it approaches the transmitter or as it crosses over the transmitter. The lightweight, portable design is easy to use and powered by an internal rechargeable battery pack. You may use the included AC adapter for locations near an electrical outlet. The AC adapter is also used for charging the transmitter.

The Transmitter has four control buttons:

- Three under the bottom cover next to the display.
 - Two for controlling the signal field range (+ & -).
 - One for use when programming the Computer Collar® unit to the Invisible Gate® Plus transmitter.
- One on the top side of the unit for turning the unit ON and OFF during normal use.

AC Adapter:

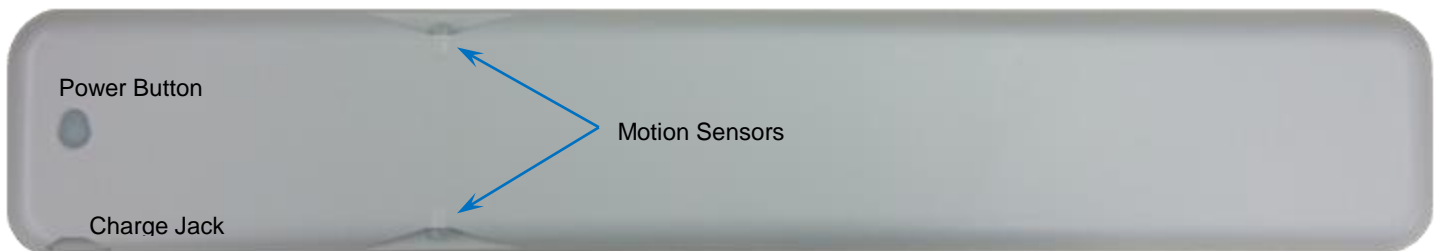
The AC adapter (RAC00-13701) is intended for long-term use or for recharging the Invisible Gate® Plus transmitter. Use the AC adapter to charge the battery pack completely prior to first use.

Operating Guide

Important: Fully charge unit before initial use. To ensure your pet does not receive an unintended correction, make sure your pet is not wearing the Computer Collar® unit when turning ON or adjusting the Invisible Gate® Plus transmitter.

Charge the Invisible Gate® Plus transmitter:

- Locate the charging jack on the front edge of the unit near the power button. Connect the charger connector to the charging jack with the keyed side facing up.
- Plug the AC adaptor (RAC00-13701) into a standard 120 volt wall outlet.
- Allow the unit to fully charge before initial use and after prolonged storage. A charge time of 2 hours is required for normal charging.
 - The power button will illuminate red while charging.
 - The power button will illuminate green when charging is complete.
- Battery life of approximately 30 days can be expected from a fully charged battery.
- The Invisible Gate® Plus transmitter will give an audible chirp once every 30 seconds and the power button will flash red every 5 seconds when the battery is low and charging is required.



Top View



Bottom View

Turning ON and OFF the Invisible Gate® transmitter:

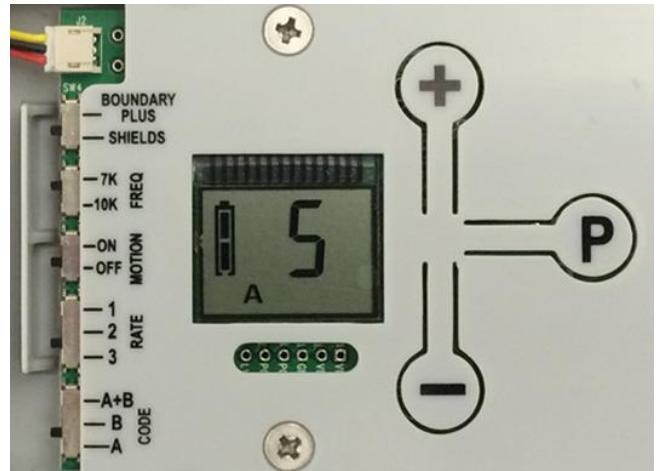
- Turn ON by pressing and holding the power button until the power button turns from red to green (approximately 2 seconds). Release the power button. Unit will emit a single beep.
- Turn OFF by pressing and holding the power button until the power button turns from red to OFF (approximately 5 seconds). Release the power button.

Control Panel:

Turn the Invisible Gate[®] unit over and remove the four screws holding the Controls Cover. Refer to page 6; Bottom View image.

- Slide Switches

- **BOUNDARY PLUS/SHIELDS Mode** – Sets how the Computer Collar[®] unit will react to the Invisible Gate[®] transmitter. Set to Boundary Plus[®] mode, activation will occur as your pet crosses the transmitter. Set to Shields[®] mode, activation occurs as you pet approaches the transmitter.
- **7K/10K FREQ** – System frequency set by Invisible Fence[®] Brand dealer.
- **ON/OFF MOTION** – Turns motion sensing on or off. Option is used when unit is in Shields[®] mode to increase battery life. Motion sensors are always on when unit is in Boundary Plus[®] mode regardless of this switch position.
- **1/2/3 RATE** – Sets the data rate of the signal. Used to increase battery life. Rate 1 is the the slowest and consumes the least energy. Rate 3 is the fastest and consumes the most energy. The faster the data rate, the more consistent the boundary.
- **A+B/B/A CODE** - Data types used to separate pet when unit is set to Shields[®] mode. This switch is unused in Boundary Plus[®] mode. Refer to Different Rules for Different Pets[™] technology section.



Control Panel

- Range and Program Buttons

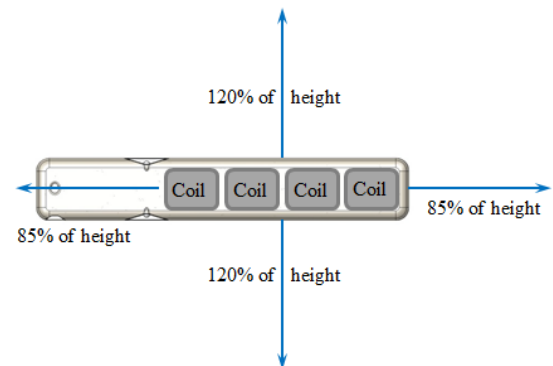
- **+ & - Buttons**- Used to adjust the signal field range.
- **P Button** – Used to program a Computer Collar[®] unit to Channel A or B when setting Different Rules for Different Pets[™] technology.

Shields[®] Operation:

In Shields[®] mode your pet's Computer Collar[®] unit will activate as it approaches the Invisible Gate[®] transmitter. This allows you to protect large areas such as couches, tables and area rugs. Shields[®] mode also allows you to deny access to one pet while allowing access to another with patented Different Rules for Different Pets[™] technology. Ensure the BOUNDARY PLUS/SHIELDS switch is in the Shields[®] position.

- Adjust Signal Field Range

- Determine the desired location and the signal field range required.
 - Wireless: 16 inch minimum up to 40 inch maximum signal field height.
- With the unit ON, press the RANGE UP (+) or the RANGE DOWN (-) buttons to increase or decrease the signal field range. The first indicator equals 16 inches of signal field. Each additional number represents approximately 6 inches of range.



Estimated Signal Field

- Verify Signal Field Range
 - Holding the Computer Collar[®] unit, start outside the range and move slowly towards the Invisible Gate[®] Plus transmitter. Do not touch the correction posts at this time.
 - The Computer Collar[®] unit will beep as it approaches the outer range of the signal field width set in Step 2. The beeping will be accompanied by a correction.
 - If the Computer Collar[®] unit fails to beep, see the troubleshooting chart on page 11.
 - Adjust range and/or relocate the Invisible Gate[®] Plus transmitter until desired area is protected.

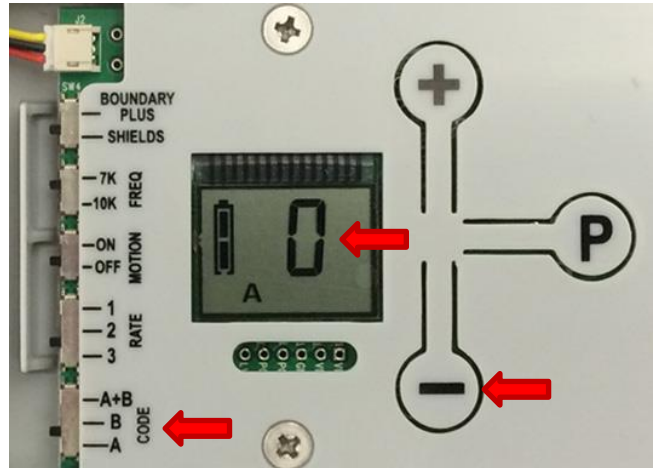
- Changing the Channel Setting on the Invisible Gate[®] Plus transmitter

- Remove the control panel cover.
- Press and release the RANGE DOWN (-) button until 0 appears on the LCD.
- Locate the switch for the Channel (A), Channel (B) and (A+B) Channel.
- Select the desired channel setting.

Note: The Invisible Gate[®] Plus transmitter will not enter into programming mode if the switch is set to A+B. See Programming Computer Collar[®] unit on Page 9

- Adjust and verify signal field range.
- Replace the control panel cover and hand tighten the four screws.

Note: Ensure the O-ring is seated in the channel before replacing the control panel cover. Failure to do so may allow moisture leakage and possible failure of the device.



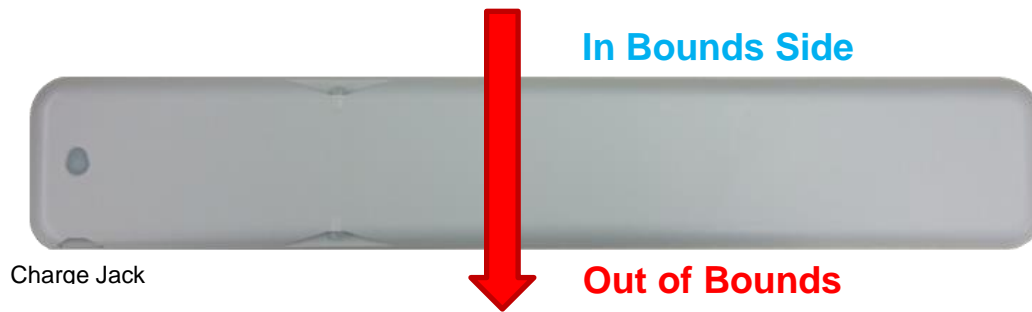
Control Panel

Boundary Plus[®] Operation:

In Boundary Plus[®] mode your pet's Computer Collar[®] unit will activate as your pet crosses over the Invisible Gate[®] Plus transmitter. This patented technology allows you to position the transmitter in a doorway to prevent entry into a room without impeding your pet's movement near the transmitter. Ensure the BOUNDARY PLUS/SHIELDS switch is in the Boundary Plus[®] position.

- Adjust Signal Field Range
 - Determine the desired location and the signal field range required.
 - Wireless: 10 inch minimum up to 34 inch maximum signal field height.
 - Signal field should be set to activate your pet's Computer Collar[®] unit 10 to 16 inches above where sits on your pet neck.
 - With the unit ON, press the RANGE UP (+) or the RANGE DOWN (-) buttons to increase or decrease the signal field range. The first indicator equals 10 inches of signal field. Each additional number represents approximately 6 inches of range.

- Verify Signal Field Range
 - Holding the Computer Collar® unit 10 to 16 inches above the height as it sits on your pet's neck, start from the "In Bounds Side" of the transmitter and move slowly towards the "Out of Bounds Side" of the Invisible Gate® Plus transmitter. The Out of Bounds Side is indicated by the charge jack. Do not touch the correction posts at this time.

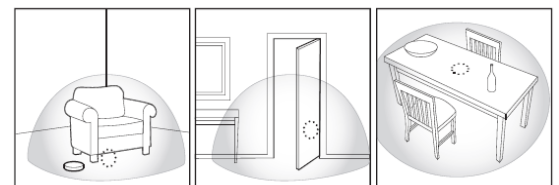


- The Computer Collar® unit will beep as it crosses over the transmitter. The beeping will be accompanied by a correction.
- If the Computer Collar® unit fails to beep, increase the signal field until activation occurs.

Multi-Area Avoidance:

Your Invisible Gate® Plus Transmitter and the Computer Collar® unit are preset to operate on Channel A (Code A). For homes with two or more pets, this setting is usually sufficient as long as all pets are required to avoid the same protected areas like keeping all pets away from the dining room, off the sofa, etc. In some multi-pet homes, it may be desired to allow one pet access to an area while denying the same access to another pet.

- When set to Channel A (Code A), the Invisible Gate® Plus transmitter denies access to pets wearing a Computer Collar® unit programmed to Channel A. (Channel A is the default setting for the Computer Collar® unit.)
- When set to Channel B (Code B), the Invisible Gate® Plus transmitter denies access to pets wearing a Computer Collar® unit programmed to Channel B.
- When set to Channel A-B (Code A + B), the Invisible Gate® Plus transmitter denies access to all pets wearing a Computer Collar® unit set to Channel A or B.

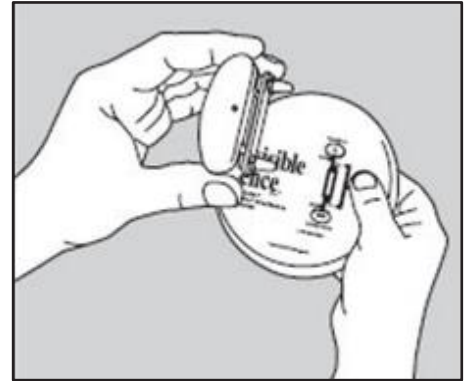


Note: Your local Invisible Fence® Brand dealer can set Computer Collar® units to not activate to any Shields® units.

Programming the Computer Collar[®] unit:

This function is only use with devices set to Shields[®] mode.

- Prior to programming ensure all Computer Collar[®] units are removed from pets and are at least 3 feet from the Invisible Gate[®] Plus transmitter.
- Follow procedure on page 7, **Changing the Channel Setting on the Invisible Gate[®] Plus transmitter**, to select Channel A or Channel B for programing into the Computer Collar[®] unit. Once complete turn the unit back over and set it down on a flat surface.
- **Note:** The Invisible Gate[®] Plus transmitter will not enter into programming mode if this switch is set to A+B.
- Press and hold the PROGRAM button while lowering the Computer Collar[®] unit from directly above the Invisible Gate[®] Plus transmitter.
- Stop lowering when the Computer Collar[®] unit begins to flicker yellow and release the PROGRAM button on the transmitter when the Computer Collar[®] unit begins to flash green.
- The Computer Collar[®] unit is now programmed to the desired channel.
- Verify operation by turning ON the Invisible Gate[®] Plus transmitter and moving the Computer Collar[®] unit into the signal field. You will hear the Computer Collar[®] beep when it activates.



Note: Make sure any Computer Collar[®] units you do not wish to program are more than 3 feet from the Invisible Gate[®] Plus transmitter or have the Power Cap[®] Battery removed. Do not perform this procedure while the Computer Collar[®] Unit is on a pet.

Training Guide

If your pet already understands his Invisible Fence® Brand system

If your pets already understand how to use their Invisible Fence® Brand system, adding a new area is easy. If the Invisible Gate® Plus unit will be used for establishing *Different Rules for Different Pets™*, please go to the section on multi-pet households.

Once the signal field is established

- 1) Use the Invisible Fence® Brand training flags to mark the desired area. Flags should be set 6"-12" inches inside the signal field range. This will provide a visual cue for your pets. Just as they learned what the flags meant when the pets were first trained, your pet will remember that flags again mean they should avoid the area.
- 2) With your pet's Computer Collar® unit in your hand, allow your pet to hear it sounding when he is looking at the flags. Your pet should react immediately by moving away from the designated protection area. Some pets may need to test the area a few times on their own before they start avoiding the protected area altogether.
- 3) Always praise your pet for making the right choice and leaving the designated protection area.
- 4) If your pet lingers in the signal field or ignores the signal field, please contact your Invisible Fence® Brand Dealer. Your pet's indoor correction level designation may need an adjustment.

Multi-pet households...Introducing *Different Rules for Different Pets™*

If your new Invisible Gate® Plus system is used to keep only specific pets out of a specific area, an enhanced visual cue will need to be created. For example, if your new Invisible Gate® Plus system is meant to keep the dog away from the kitty litter box, flagging the area would also deter the cat who have been trained to understand the meanings of the flags.

- 1) Program the pets Computer Collar® units as instructed on Page 9.
- 2) Remove the pets from the designated area and set up the Invisible Fence® Brand training flags (as above).
- 3) Add the new visually enhanced elements.-The easiest cue would be to use blue painters tape. Use 4-6" strips of painters tape between the flags on the floor. Painters tape can easily be removed without causing damage to different types of surfaces.
- 4) Bring in the pets that are being trained to avoid the area and with the Computer Collar® unit in your hand, let them see the flags, tape and hear the tone.
- 5) Put the Computer Collar® unit on your pet and let the pet explore the area. Once your pet has had a few minutes to investigate the area, move the flags, leaving the painter's tape in place.
- 6) Bring in the pets that are not affected by the Invisible Gate® Plus system and encourage them to explore in the designated area.
- 7) The pets affected may try to approach the area, but will quickly retreat upon hearing the tone. Always praise your pets for making the "Right" choice.
- 8) If your pet lingers in the signal field or ignores the signal field, please contact your Invisible Fence® Brand Dealer. Your pet's indoor correction level may need an adjustment.

If your pet is new to Invisible Fence® Brand system

If you and your pet are new to the Invisible Fence® Brand system there are several considerations to examine before you start training your pets. Your Invisible Fence® Brand Dealer has Trainers certified in Perfect Start™ Plus training and can evaluate your pet to provide customized training that is both scientifically sound and behaviorally based as well as gentle and effective. Your Dealer has a wealth of experience in training pets including special diagnostic tools that provides the trainer more control over the correction level as well as enabling the trainer to access information about how your pet uses the Invisible Fence® Brand system during training. This information helps the trainer establish the right correction level for your pet.

Your Invisible Fence® Brand Dealer has gathered information about your pet's breed, life history, and energy level. The Dealer will also have available to them specific information downloaded from the Computer Collar® units as to how your pet(s) and the Invisible Gate® Plus system interact and protect the desired area. (Example: Based on the Computer Collar® systems data, is the Invisible Gate® Plus system keeping the pets away from the trashcan or is it stopping the dog from chasing the cats down the hall.)

This information will help the Dealer to set a correction level that is appropriate for your pet. Your Invisible Fence® Brand Dealer may set up your pet's Computer Collar® unit with a shunt to reduce the correction as training begins. If a shunt is used, you will be provided with directions on how to remove the shunt from the Computer Collar® unit following the completion of your training schedule.

It would be easy to set a correction high enough to stop your pet from accessing the area immediately, but proceeding with that mind frame makes it more difficult for your pet to understand how the new rules in the house works and affects them. Using a correction level that is too high may result in additional training problems, as your pet may become afraid of that area of the house. High correction level training may make it more difficult to train new areas in the future. The gentle start of Perfect Start™ Plus Pet Training insures the training process does not stress your pet.

If you decide to train your pet yourself, you should make sure your pet is not afraid of the tone made by the Computer Collar® unit.

Hold the Computer Collar® unit by the collars strap in your hand and approach the signal field so that the tone activates. Do not hold the posts in your hands.

- If your pet has a strong reaction to get away from the designated area after hearing the tone, contact your Dealer right away. Your Invisible Fence® Brand dealer will be able to help customize training and the appropriate training settings for your pet.

If you choose to train yourself here are the steps to follow:

- 1) Use the Invisible Fence® Brand training flags to mark the desired area. Flags should be set 6"-12" inches inside the signal field range. This will provide a visual cue for your pets.
- 2) Your Invisible Fence® Brand Dealer will have set your pet's Computer Collar® units to deliver a very low correction to begin training. Let your pet explore the area and check out the flags. When you hear the collar tone, call your pet out of the signal area. Praise your pet for making the "right" choices. This step allows your pet to learn the relationship between the flags they see and smell, the tone they hear and the tickle they feel. The goal is for the pets to understand how they Invisible Fence® Brand system works and that the pet is actually in control of turning the correction on and off.
- 3) During training periods, allow your pet to only explore the area when you can directly supervise. If you are unable to supervise, keep your pet away from the designated area until the training program is completed.
- 4) Some pets may make several approaches to the flags/tone area. Each time you hear the collar beep, encourage and assist your pet to retreat from the area. Praise your pet as soon as the tone ceases to sound.
- 5) After a couple of days, if your pet isn't avoiding the protected area, take off the shunt (if applicable) following the instructions you received from your Invisible Fence® Brand dealer. This will slightly raise the correction level.
- 6) Allow your pet to again explore the designated area. The new correction level should encourage your pet to avoid the protected area.
- 7) If your pet continues to enter the protected area after a day, call your Invisible Fence® Dealer for more training information.

Troubleshooting

<p>Invisible Gate® Plus Transmitter does not appear to work</p>	<ul style="list-style-type: none"> • Check for low battery (audible chirp once every 30 seconds and flashing LCD). If low battery is indicated, plug the AC adapter into the unit and charge for 2 hours. • Check/replace the Power Cap® Battery in the Computer Collar® unit. • The Invisible Gate® Plus transmitter power could be completely drained. Apply power to the Invisible Gate® Plus transmitter using the AC adapter to verify operation. • If using AC adapter for power, check connections. • Check the Computer Collar® unit fit to ensure posts have direct skin contact. • Ensure the Computer Collar® unit is programmed properly to the Invisible Gate® Plus transmitter.
<p>LCD is black</p>	<ul style="list-style-type: none"> • Operating the Invisible Gate® Plus transmitter in direct sunlight may cause the LCD to overheat and turn completely black. The LCD will return to normal when the temperature drops below 150°F/65°C. Operating the transmitter when the LCD is black will not damage the device.
<p>Range is too low or too high</p>	<ul style="list-style-type: none"> • Check for low battery (audible chirp once every 30 seconds and flashing LCD). If low battery is indicated, plug the AC adapter into the unit and charge for 2 hours. • Adjust the Invisible Gate® Plus transmitter to increase/decrease signal field range. See Step 1 on page 7 (Adjust signal field range). • Metal objects may distort the transmitter's range. Consider alternate location for the Invisible Gate® Plus transmitter.
<p>Computer Collar® Unit does not seem to deter pet</p>	<ul style="list-style-type: none"> • Check/replace the Power Cap® Battery in the Computer Collar® unit and check collar fit. • Check the signal field range on the Invisible Gate® Plus transmitter. • Ensure the training posts are removed from the Computer Collar® unit after training.
<p>Computer Collar® Unit fails to sound warning beep</p>	<ul style="list-style-type: none"> • Check/replace the Power Cap® Battery in the Computer Collar® unit. • Ensure the Computer Collar® unit is set to same Invisible Gate® Plus transmitter CHANNEL setting. See Multi-Area Avoidance Section on page 9.

Need additional help? Contact your local Invisible Fence® Brand dealer. Call 1-800-578-3647 or visit www.InvisibleFence.com to find your local dealer.

Battery Disposal

Separate collection of spent batteries is required in many regions; check the regulations in your area before discarding spent batteries. The Computer Collar[®] unit operates on one (1) Lithium Manganese Dioxide (Li-MnO₂) battery with a 3 Volt, 160 mAh capacity, replace only with equivalent battery that may be obtained from your Invisible Fence[®] Brand dealer. The transmitter operates on 1 rechargeable Lithium Ion Polymer (Li-ion) battery pack with a 3.7 Volt, 1900mAh, 7.03Wh capacity.

Perchlorate Battery

Perchlorate Material – special handling may apply. See www.dtsc.ca.gov/hazardouswaste/perchlorate.

Important Recycling Advice

Please respect the Waste Electrical and Electronic Equipment regulations in your country. This equipment must be recycled. If you no longer require this equipment, do not place it in the normal municipal waste system. Please return it to where it was purchased in order that it can be placed in our recycling system. If this is not possible, please contact your Invisible Fence[®] Brand dealer.

Compliance

US and Canada

FCC ID: KE3-3002902

IC: 2721A-3002902

This device complies with Industry Canada rules. This device complies with part 15 of the FCC Rules. Operation is subject to the following two conditions: (1) This device may not cause harmful interference, and (2) this device must accept any interference received, including interference that may cause undesired operation.

Le présent appareil est conforme aux CNR d'Industrie Canada applicables aux appareils radio exempts de licence. Cet appareil est conforme à la partie 15 des règles FCC. L'exploitation est autorisée aux deux conditions suivantes : (1) l'appareil ne doit pas produire de brouillage, et (2) l'utilisateur de l'appareil doit accepter tout brouillage radioélectrique subi, même si le brouillage est susceptible d'en compromettre le fonctionnement.

CAUTION Modification or changes to this equipment not expressly approved by Radio Systems Corporation may void the user's authority to operate the equipment.


NOTE: This equipment has been tested and found to comply with the limits for a Class B digital device, pursuant to part 15 of the FCC Rules. These limits are designed to provide reasonable protection against harmful interference in a residential installation. This equipment generates, uses, and can radiate radio frequency energy and, if not installed and used in accordance with the instructions, may cause harmful interference to radio communications. However, there is no guarantee that interference will not occur in a specific installation. If interference does occur to radio or television reception, which can be determined by turning the equipment off and on, the user is encouraged to try to correct the interference by one or more of the following measures:

- Reorient or relocate the receiving antenna.
- Increase the separation between the equipment and the Computer Collar® Unit.
- Connect the equipment to an outlet on a circuit different from that to which the Computer Collar® Unit is connected.
- Consult the dealer, or an experienced radio/TV technician for help.

This Class B digital apparatus complies with Canadian RSS-210.

Cet appareil numérique de la classe B est conforme à la norme NMB-003 du Canada.

European Union

 This equipment has been tested and found to comply with relevant EU Electromagnetic Compatibility, Low Voltage and R&TTE Directives. Before using this equipment outside the EU countries, check with the relevant local R&TTE authority. Unauthorized changes or modifications to the equipment that are not approved by Radio Systems Corporation are in violation of EU R&TTE regulations, could void the user's authority to operate the equipment, and void the warranty.

This product is in full compliance with the provisions of the R&TTE - Directive 1999/05/EEC.

The Declaration of Conformity can be found at:

<http://www.invisiblefence.com/international/declarations-of-conformity.asp>.

Dealer Name _____

Dealer Phone _____

System Frequency _____

Notes:

800-578-3647 (USA)
(865) 777-5404 (International)
400-XXXX-X
©2015 Radio System Corporation
All rights reserved.

Protected by Patents:
U.S.: 7,046,152; 7,068,174; 7,204,204;