

REVISION RECORD				
ECO/PRO	REV	DESCRIPTION	DATE	BY
RSC10647	001	Release to Production	06/17/2014	Hapi

TEK 2.0 HandHeld Unit

PAGE NO.	SCHEMATIC PAGE
1.	COVER PAGE
2.	PROCESSOR 1 OF 3
3.	PROCESSOR 2 OF 3
4.	PROCESSOR 3 OF 3
5.	POWER MANAGEMENT
6.	LDC, USER INTERFACE AND SYSTEM BOOT
7.	LPDDR MEMORY AND SD MMC INTERFACE
8.	RF-TRANSCEIVER
9.	GPS, BLUETOOTH AND SENSORS
10.	AUDIO CODEC, USB, VIBM. AND JTAG

REV.	DESCRIPTION
001.	Release to Production

COMPANY CONFIDENTIAL

THIS DRAWING IS THE PROPERTY OF AND PROPRIETARY TO RADIO SYSTEMS CORPORATION. THIS DRAWING AND THE INFORMATION CONTAINED HEREIN SHALL NOT BE REPRODUCED NOR DISCLOSED TO ANYONE EXCEPT THOSE REQUIRING IT'S USE FOR RSC AUTHORIZED PURPOSES. THIS DOCUMENT SHALL BE DESTROYED OR RETURNED TO RSC WHEN NO LONGER REQUIRED FOR THESE PURPOSES.

DRAWN: Hapi	DATED: 04/21/2014	SIZE: C	RSC NUMBER: SCH_600-627	REV: 001
ENGINEER: Hapi	DATED: 04/21/2014	FILE NAME: SCHM-600-627_R01		
COPYRIGHT © RSC 2012		BOARD NUMBER:100-1193_R01		SHEET: 1 OF: 10

RADIO SYSTEMS CORPORATION
10427 Petsafe Way - Knoxville, TN 37932-3369 - (865)777-5404
SCHEMATIC TITLE: TEK 2.0 HANDHELD GPS
868MHZ / 915 MHZ HAND HELD TRANSCEIVER

REVISION RECORD				
ECO/PRO	REV	DESCRIPTION	DATE	BY
RSC10647	001	Release to Production	06/17/2014	Hapi

A

B

C

D

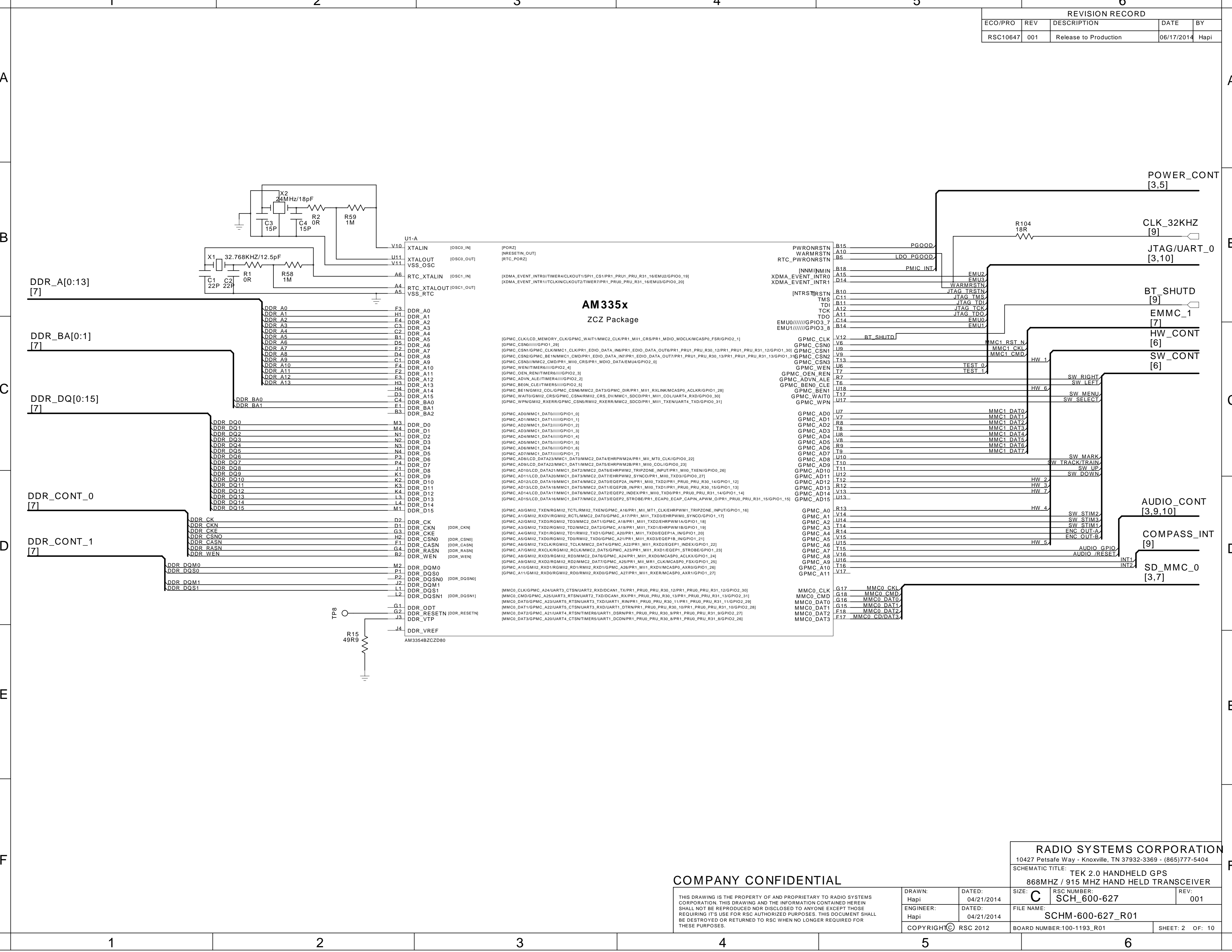
E

F

E

F

1 2 3 4 5 6



COMPANY CONFIDENTIAL

THIS DRAWING IS THE PROPERTY OF AND PROPRIETARY TO RADIO SYSTEMS CORPORATION. THIS DRAWING AND THE INFORMATION CONTAINED HEREIN SHALL NOT BE REPRODUCED NOR DISCLOSED TO ANYONE EXCEPT THOSE REQUIRING IT'S USE FOR RSC AUTHORIZED PURPOSES. THIS DOCUMENT SHALL BE DESTROYED OR RETURNED TO RSC WHEN NO LONGER REQUIRED FOR THESE PURPOSES.

DRAWN: Hapi	DATED: 04/21/2014	SIZE: C	RSC NUMBER: SCH-600-627	REV: 001
ENGINEER: Hapi	DATED: 04/21/2014	FILE NAME: SCHM-600-627_R01		
COPYRIGHT © RSC 2012		BOARD NUMBER:100-1193_R01	SHEET: 2 OF: 10	

RADIO SYSTEMS CORPORATION
10427 Petsafe Way - Knoxville, TN 37932-3369 - (865)777-5404
SCHEMATIC TITLE: **TEK 2.0 HANDHELD GPS 868MHZ / 915 MHZ HAND HELD TRANSCEIVER**

REVISION RECORD				
ECO/PRO	REV	DESCRIPTION	DATE	BY
RSC10647	001	Release to Production	06/17/2014	HAP



COMPANY CONFIDENTIAL

THIS DRAWING IS THE PROPERTY OF AND PROPRIETARY TO RADIO SYSTEMS CORPORATION. THIS DRAWING AND THE INFORMATION CONTAINED HEREIN SHALL NOT BE REPRODUCED NOR DISCLOSED TO ANYONE EXCEPT THOSE REQUIRING IT'S USE FOR RSC AUTHORIZED PURPOSES. THIS DOCUMENT SHALL BE DESTROYED OR RETURNED TO RSC WHEN NO LONGER REQUIRED FOR THESE PURPOSES.

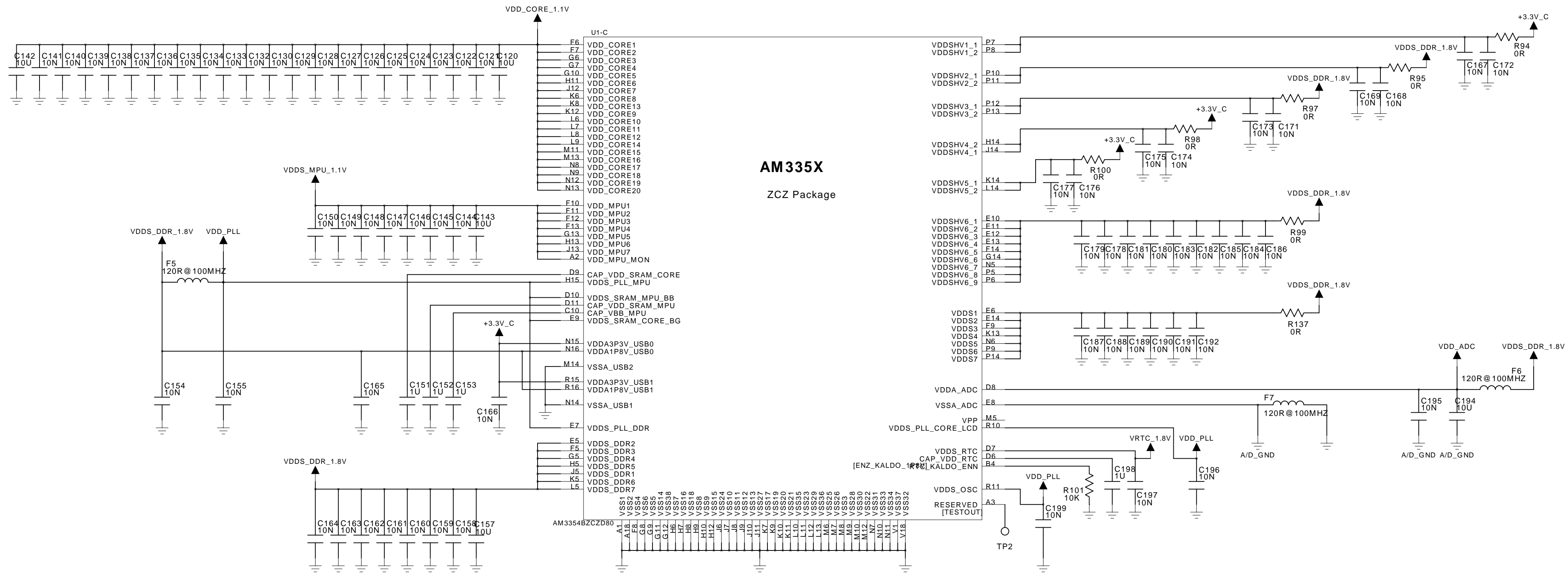
DRAWN: Hapi	DATED: 04/21/2014	SIZE: C	RSC NUMBER: SCH_600-627	REV: 001
ENGINEER: Hapi	DATED: 04/21/2014	FILE NAME: SCHM-600-627_R01		
COPYRIGHT © RSC 2012		BOARD NUMBER:100-1193_R01	SHEET: 3 OF: 10	

RADIO SYSTEMS CORPORATION
 10427 Patsafe Way - Knoxville, TN 37932-3369 - (865)777-5404
 SCHEMATIC TITLE: **TEK 2.0 HANDHELD GPS 868MHZ / 915 MHZ HAND HELD TRANSCEIVER**

A
B
C
D
E
F

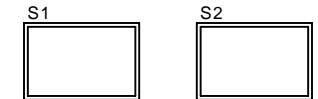
A
B
C
D
E
F

REVISION RECORD				
ECO/PRO	REV	DESCRIPTION	DATE	BY
RSC10647	001	Release to Production	06/17/2014	Hapi



AM335X
ZCZ Package

RF-SHIELD RF-SHIELD



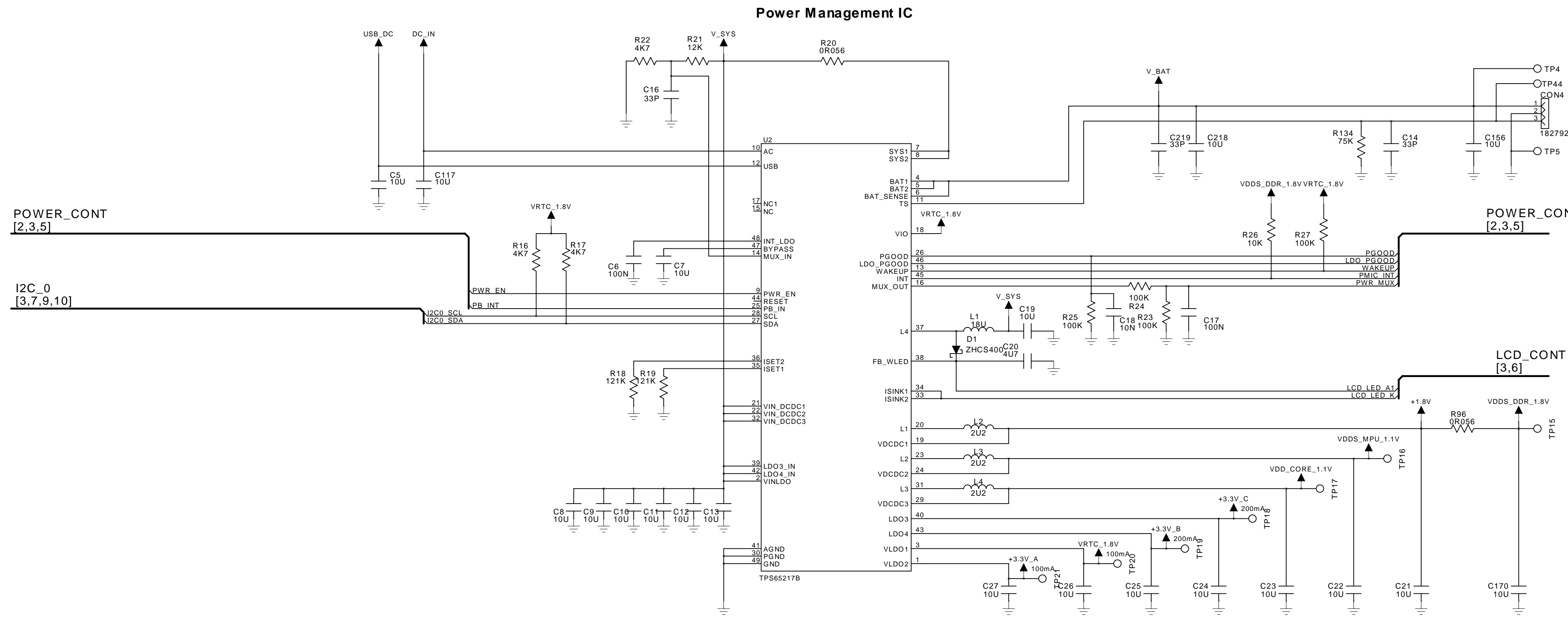
COMPANY CONFIDENTIAL

THIS DRAWING IS THE PROPERTY OF AND PROPRIETARY TO RADIO SYSTEMS CORPORATION. THIS DRAWING AND THE INFORMATION CONTAINED HEREIN SHALL NOT BE REPRODUCED NOR DISCLOSED TO ANYONE EXCEPT THOSE REQUIRING IT'S USE FOR RSC AUTHORIZED PURPOSES. THIS DOCUMENT SHALL BE DESTROYED OR RETURNED TO RSC WHEN NO LONGER REQUIRED FOR THESE PURPOSES.

DRAWN: Hapi	DATED: 04/21/2014	SIZE: C	RSC NUMBER: SCH_600-627	REV: 001
ENGINEER: Hapi	DATED: 04/21/2014	FILE NAME: SCHM-600-627_R01		
COPYRIGHT © RSC 2012		BOARD NUMBER:100-1193_R01		SHEET: 4 OF: 10

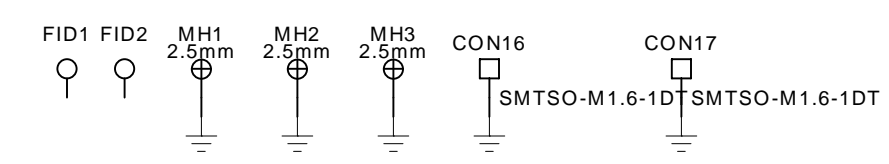
RADIO SYSTEMS CORPORATION
10427 Petsafe Way - Knoxville, TN 37932-3369 - (865)777-5404
SCHEMATIC TITLE: **TEK 2.0 HANDHELD GPS
868MHZ / 915 MHZ HAND HELD TRANSCEIVER**

REVISION RECORD				
ECO/PRO	REV	DESCRIPTION	DATE	BY
RSC10647	001	Release to Production	06/17/2014	Hapi



POWER_CONT [2,3,5]
I2C_0 [3,7,9,10]

POWER_CONT [2,3,5]
LCD_CONT [3,6]



COMPANY CONFIDENTIAL

THIS DRAWING IS THE PROPERTY OF AND PROPRIETARY TO RADIO SYSTEMS CORPORATION. THIS DRAWING AND THE INFORMATION CONTAINED HEREIN SHALL NOT BE REPRODUCED NOR DISCLOSED TO ANYONE EXCEPT THOSE REQUIRING ITS USE FOR RSC AUTHORIZED PURPOSES. THIS DOCUMENT SHALL BE DESTROYED OR RETURNED TO RSC WHEN NO LONGER REQUIRED FOR THESE PURPOSES.

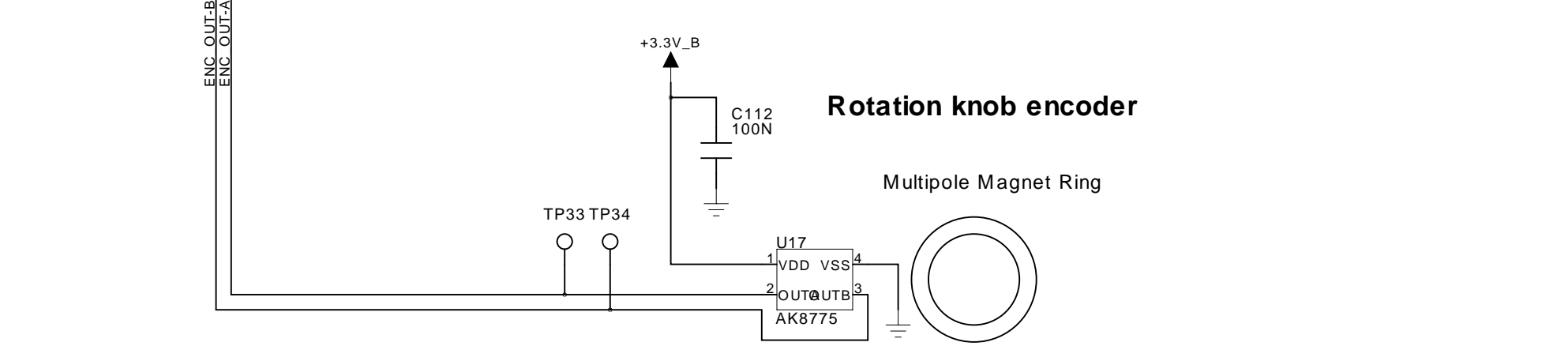
DRAWN: Hapi	DATED: 04/21/2014	SIZE: C	RSC NUMBER: SCH-600-627	REV: 001
ENGINEER: Hapi	DATED: 04/21/2014	FILE NAME: SCHM-600-627_R01		BOARD NUMBER:100-1193_R01
COPYRIGHT © RSC 2012		SHEET: 5 OF: 10		

RADIO SYSTEMS CORPORATION
10427 Petsafe Way - Knoxville, TN 37932-3369 - (865)777-5404
SCHEMATIC TITLE: TEK 2.0 HANDHELD GPS
868MHZ / 915 MHZ HAND HELD TRANSCEIVER

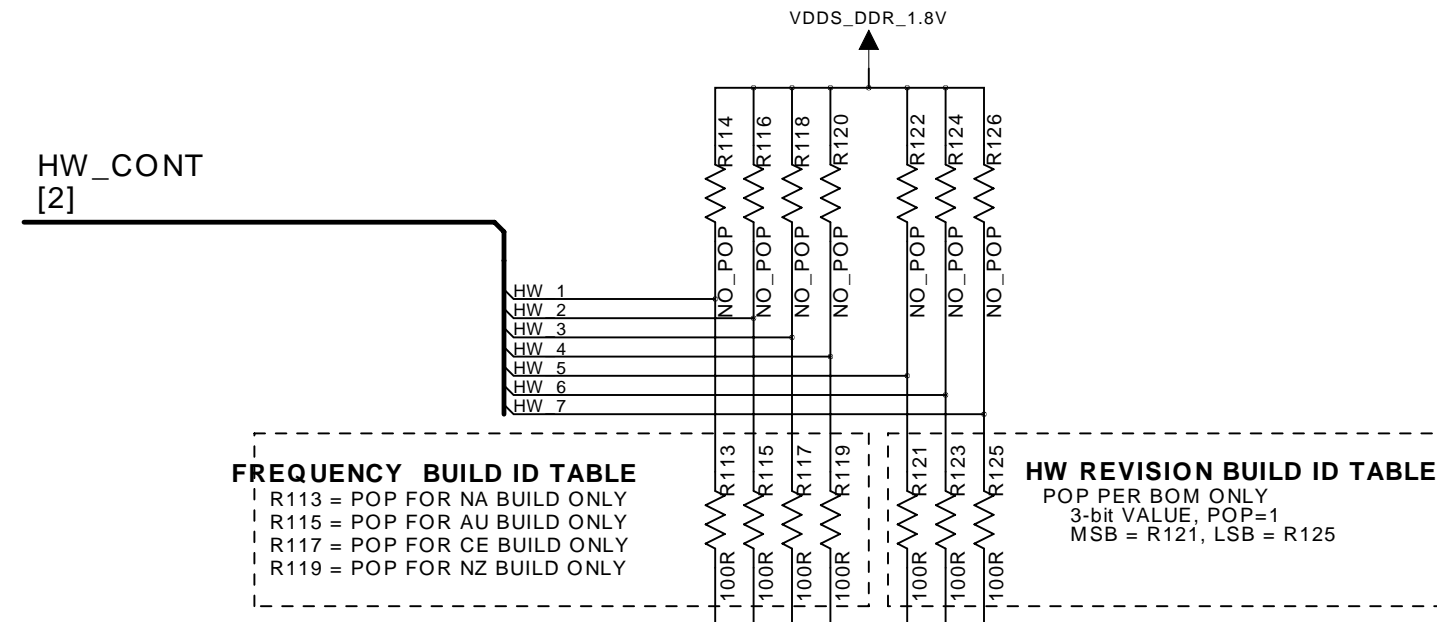
REVISION RECORD				
ECO/PRO	REV	DESCRIPTION	DATE	BY
RSC10647	001	Release to Production	06/17/2014	Hapi

LCD_CONT [3,5,6]

SW_CONT [2]

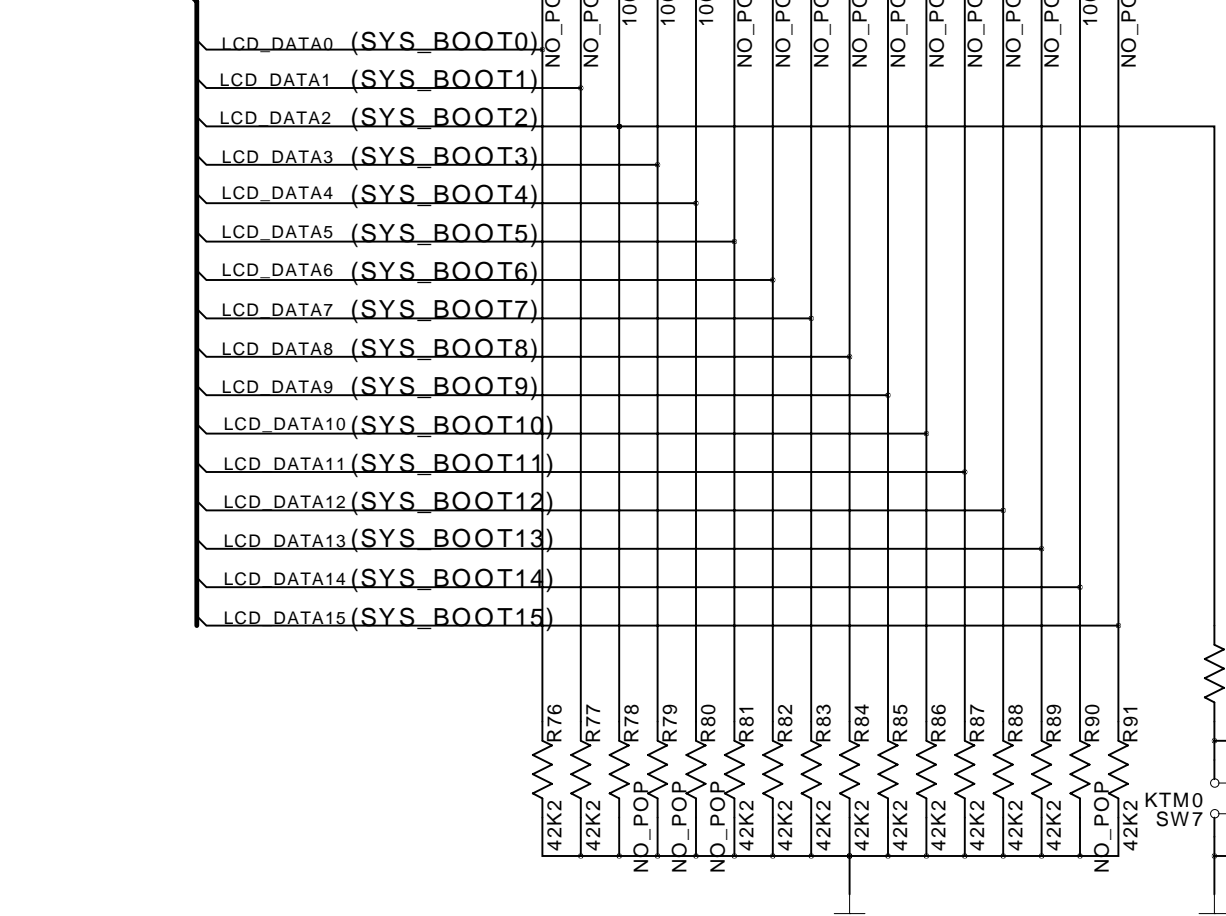


Frequency & HW Rev. Configuration

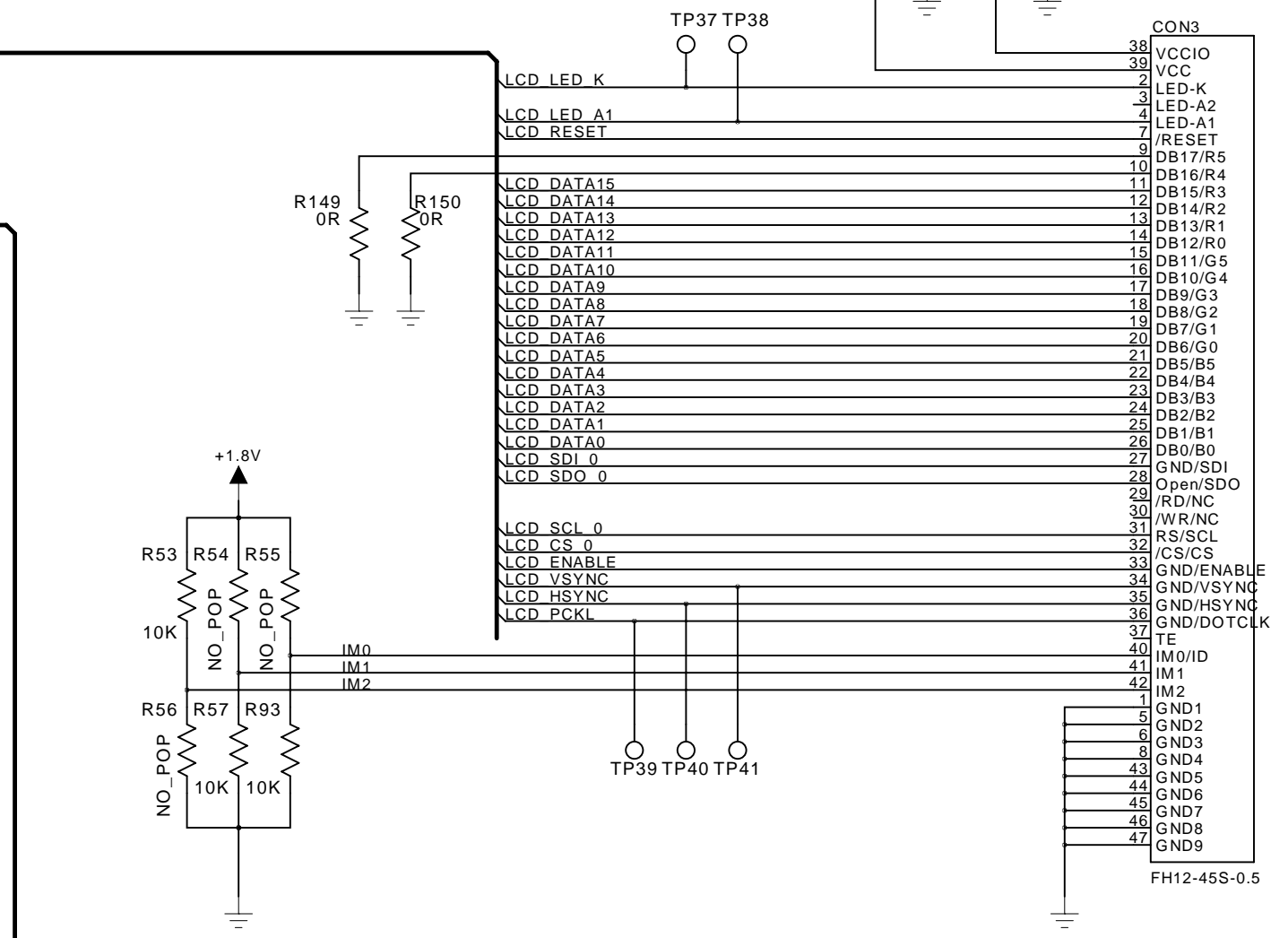
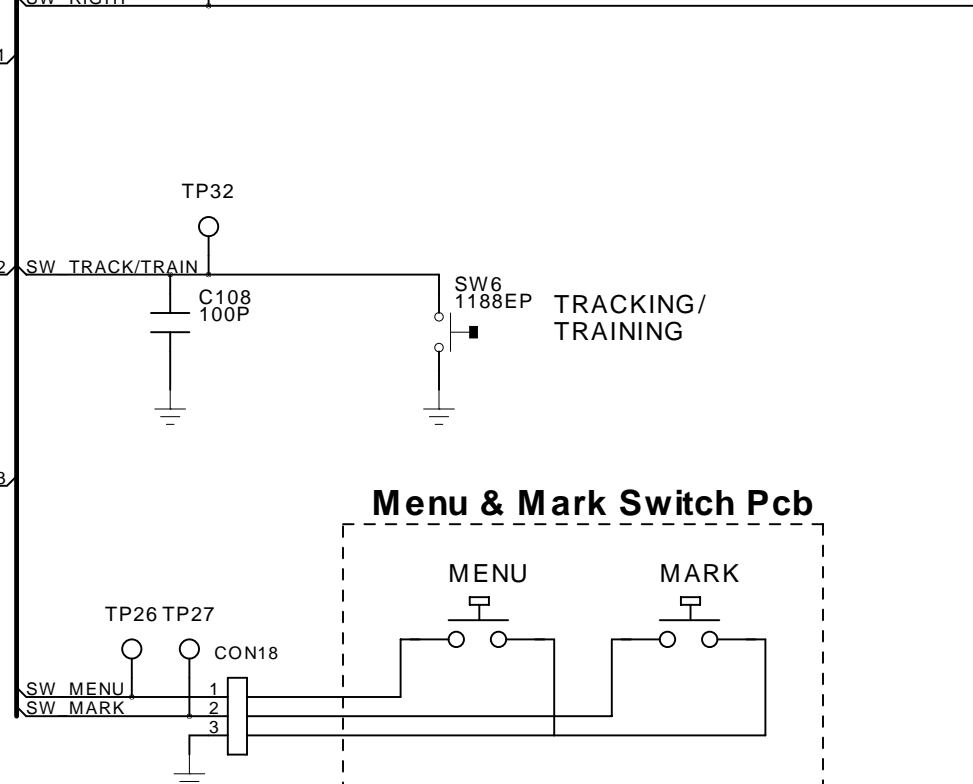
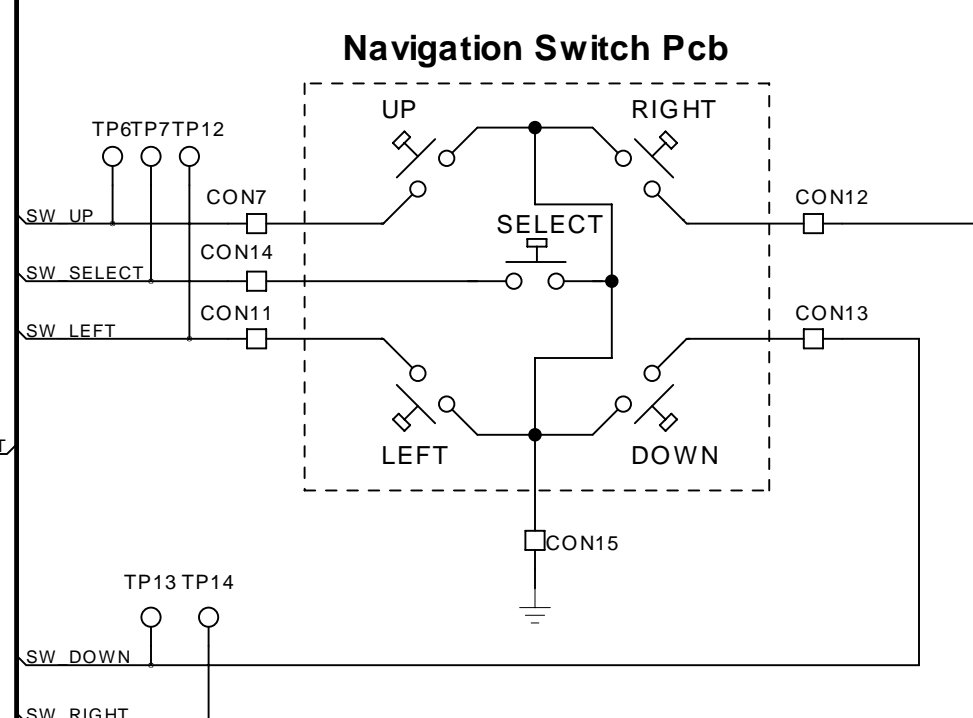
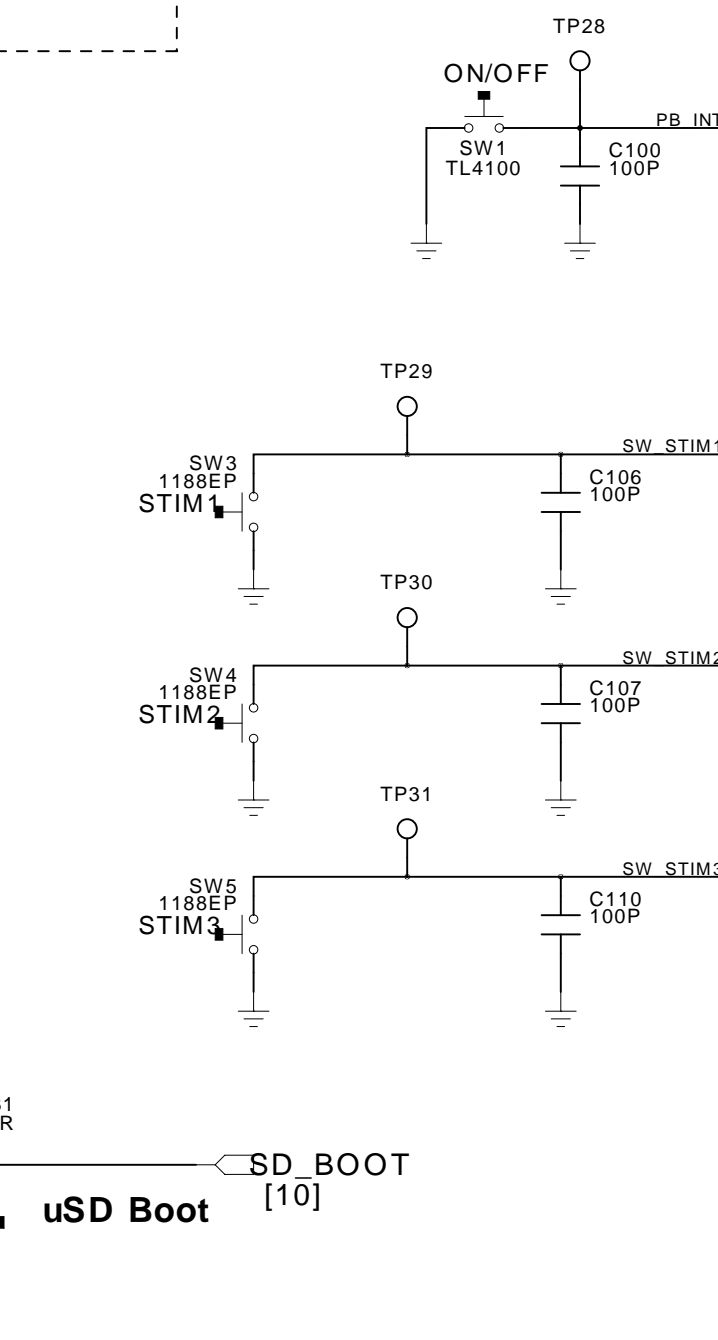


HW_CONT [2]

LCD_CONT [3,5,6]



NORMAL BOOT ORDER.....eMMC1....MMC0...UART0...USB0....24MHZ
uSD BOOT ORDER.....SPI1.....MMC0....USB0...UART0.....24MHZ



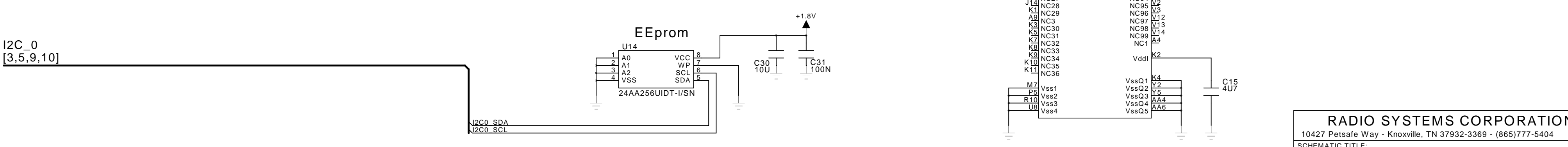
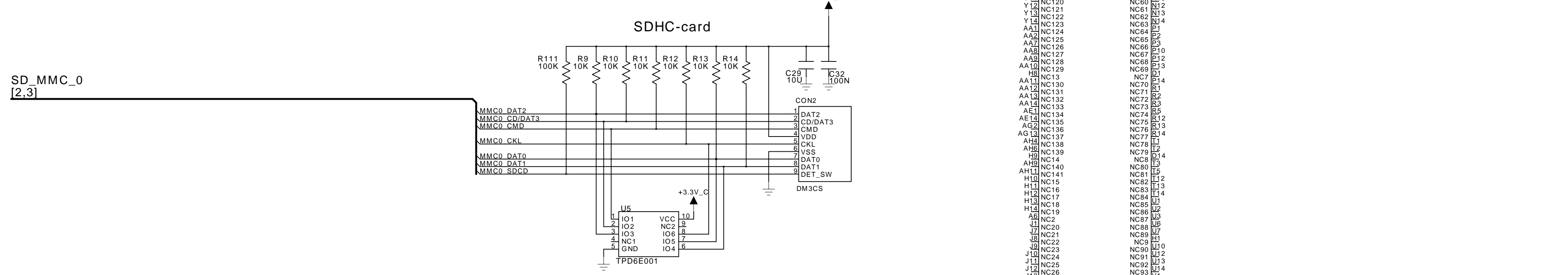
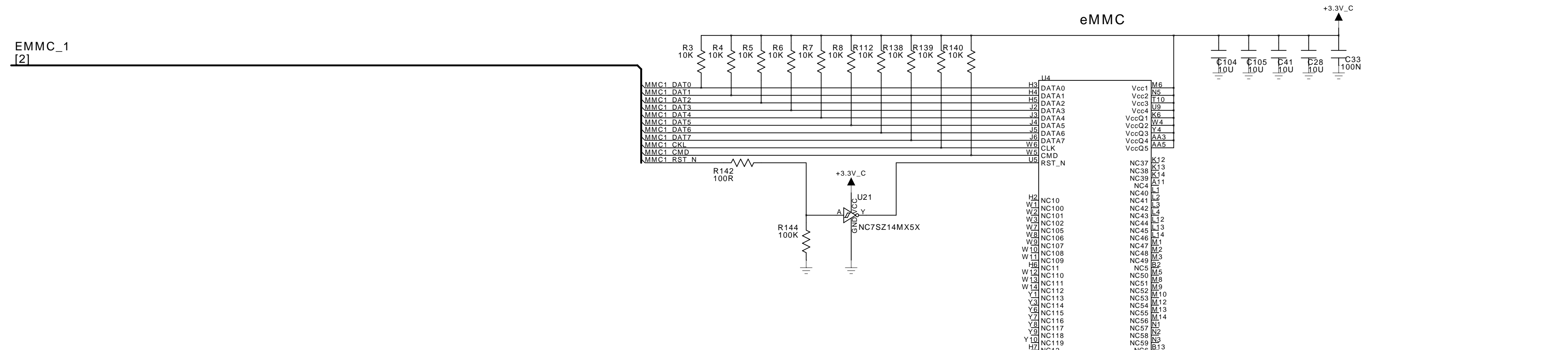
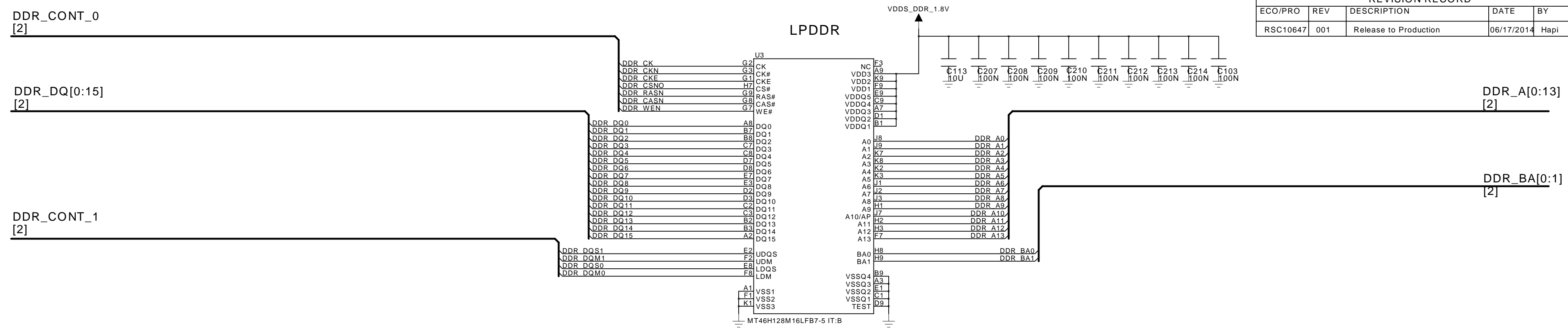
RADIO SYSTEMS CORPORATION
10427 Petsafe Way - Knoxville, TN 37932-3369 - (865)777-5404
SCHEMATIC TITLE: **TEK 2.0 HANDHELD GPS 868MHZ / 915 MHZ HAND HELD TRANSCEIVER**

COMPANY CONFIDENTIAL

THIS DRAWING IS THE PROPERTY OF AND PROPRIETARY TO RADIO SYSTEMS CORPORATION. THIS DRAWING AND THE INFORMATION CONTAINED HEREIN SHALL NOT BE REPRODUCED NOR DISCLOSED TO ANYONE EXCEPT THOSE REQUIRING IT'S USE FOR RSC AUTHORIZED PURPOSES. THIS DOCUMENT SHALL BE DESTROYED OR RETURNED TO RSC WHEN NO LONGER REQUIRED FOR THESE PURPOSES.

DRAWN: Hapi	DATED: 04/21/2014	SIZE: C	RSC NUMBER: SCH_600-627	REV: 001
ENGINEER: Hapi	DATED: 04/21/2014	FILE NAME: SCHM-600-627_R01		
COPYRIGHT © RSC 2012		BOARD NUMBER:100-1193_R01		SHEET: 6 OF: 10

REVISION RECORD				
ECO/PRO	REV	DESCRIPTION	DATE	BY
RSC10647	001	Release to Production	06/17/2014	Hapi



COMPANY CONFIDENTIAL

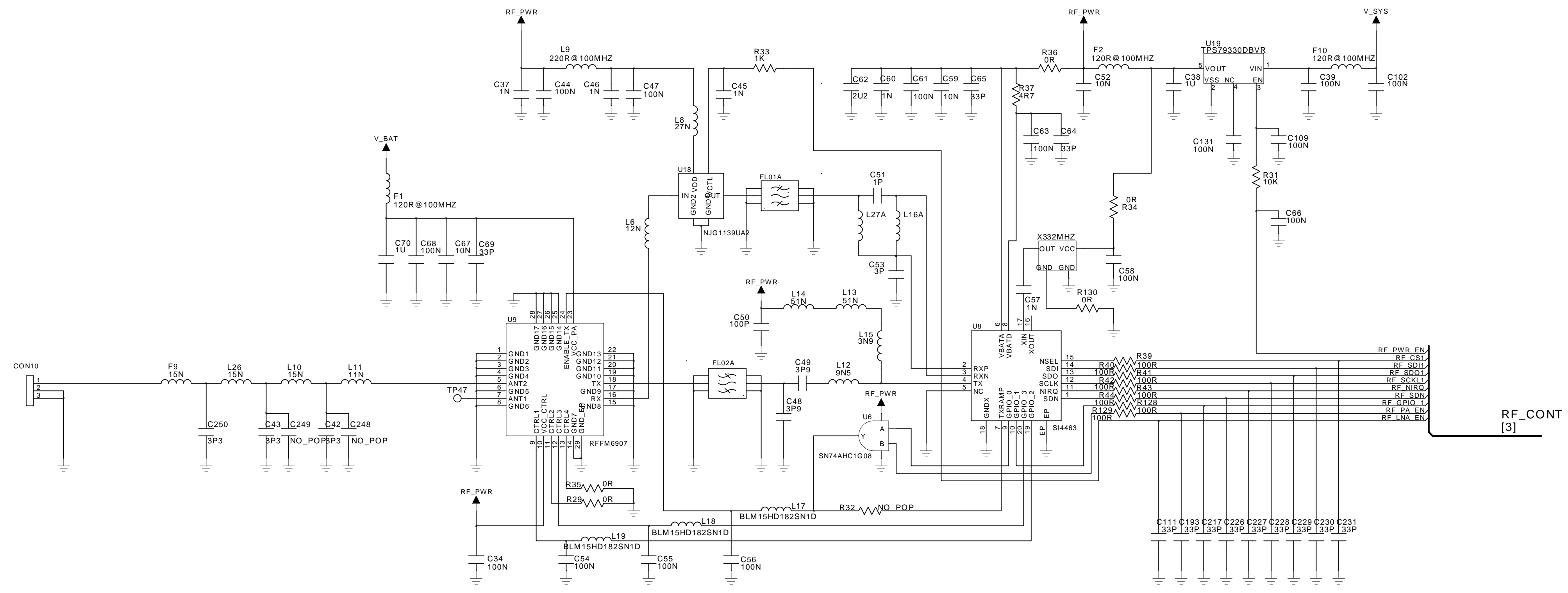
THIS DRAWING IS THE PROPERTY OF AND PROPRIETARY TO RADIO SYSTEMS CORPORATION. THIS DRAWING AND THE INFORMATION CONTAINED HEREIN SHALL NOT BE REPRODUCED NOR DISCLOSED TO ANYONE EXCEPT THOSE REQUIRING IT'S USE FOR RSC AUTHORIZED PURPOSES. THIS DOCUMENT SHALL BE DESTROYED OR RETURNED TO RSC WHEN NO LONGER REQUIRED FOR THESE PURPOSES.

DRAWN: Hapi	DATED: 04/21/2014	SIZE: C	RSC NUMBER: SCH_600-627	REV: 001
ENGINEER: Hapi	DATED: 04/21/2014	FILE NAME: SCHM-600-627_R01		
COPYRIGHT © RSC 2012		BOARD NUMBER:100-1193_R01	SHEET: 7 OF: 10	

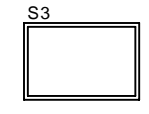
RADIO SYSTEMS CORPORATION
10427 Petsafe Way - Knoxville, TN 37932-3369 - (865)777-5404
SCHEMATIC TITLE: TEK 2.0 HANDHELD GPS
868MHZ / 915 MHZ HAND HELD TRANSCEIVER

REVISION RECORD				
ECO/PRO	REV	DESCRIPTION	DATE	BY
RSC10647	001	Release to Production	06/17/2014	Hapi

- | | |
|--|--|
| FL01A = 111-075 FOR TEK2 NA BUILD
FL01B = 111-075 FOR TEK2 AU BUILD
FL01C = 111-059 FOR TEK2 CE BUILD
FL01D = 111-109 FOR TEK2 NZ BUILD
FL02A = 111-075 FOR TEK2 NA BUILD
FL02B = 111-075 FOR TEK2 AU BUILD
FL02C = 111-059 FOR TEK2 CE BUILD
FL02D = 111-109 FOR TEK2 NZ BUILD | L16A = 106-101 FOR TEK2 NA BUILD
L16B = 106-101 FOR TEK2 AU BUILD
L16C = 112-151 FOR TEK2 CE BUILD
L16D = 112-151 FOR TEK2 NZ BUILD
L27A = 112-099 FOR TEK2 NA BUILD
L27B = 112-099 FOR TEK2 AU BUILD
L27C = 112-150 FOR TEK2 CE BUILD
L27D = 112-150 FOR TEK2 NZ BUILD |
|--|--|



RF-SHIELD

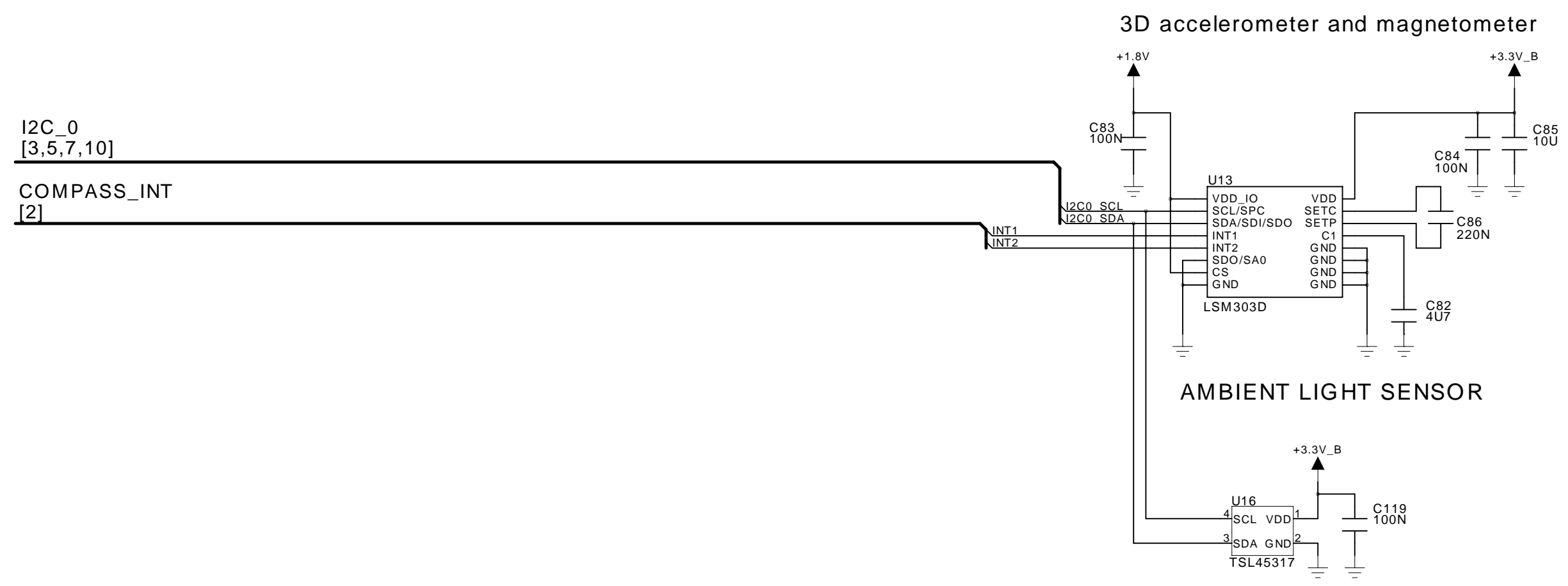
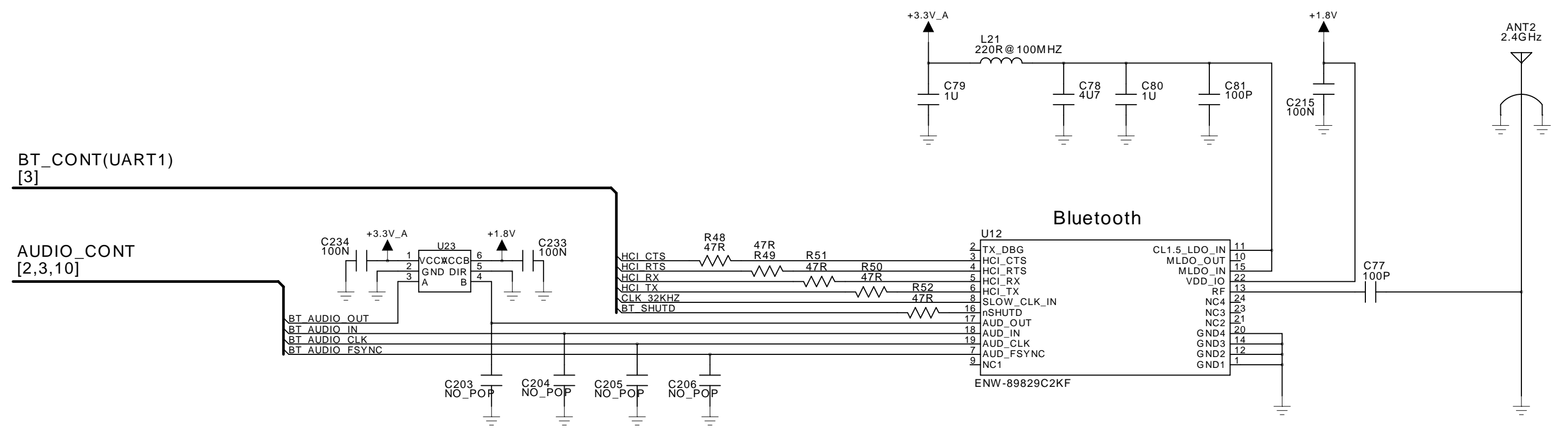
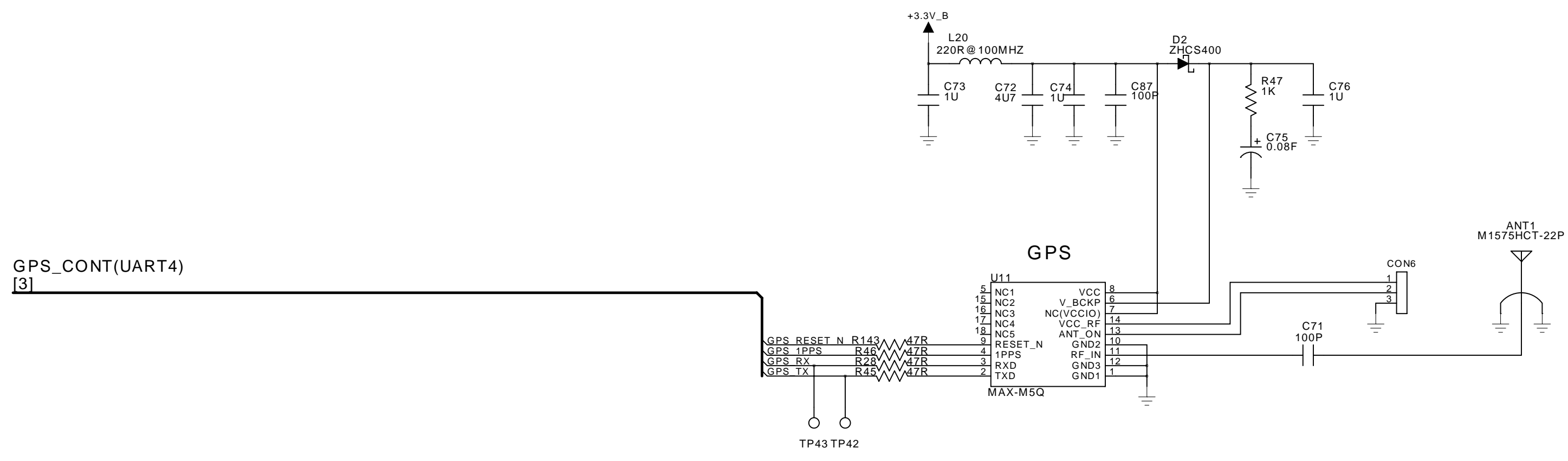


COMPANY CONFIDENTIAL

RADIO SYSTEMS CORPORATION
 10427 Petsafe Way - Knoxville, TN 37932-3369 - (865)777-5404
 SCHEMATIC TITLE: **TEK 2.0 HANDHELD GPS**
868MHZ / 915 MHZ HAND HELD TRANSCEIVER

DRAWN: Hapi	DATED: 04/21/2014	SIZE: C	RSC NUMBER: SCH_600-627	REV: 001
ENGINEER: Hapi	DATED: 04/21/2014	FILE NAME: SCHM-600-627_R01		
COPYRIGHT © RSC 2012		BOARD NUMBER:100-1193_R01		SHEET: 8 OF: 10

REVISION RECORD				
ECO/PRO	REV	DESCRIPTION	DATE	BY
RSC10647	001	Release to Production	06/17/2014	Hapi



RADIO SYSTEMS CORPORATION
10427 Petsafe Way - Knoxville, TN 37932-3369 - (865)777-5404
SCHEMATIC TITLE: **TEK 2.0 HANDHELD GPS
868MHZ / 915 MHZ HAND HELD TRANSCEIVER**

COMPANY CONFIDENTIAL

THIS DRAWING IS THE PROPERTY OF AND PROPRIETARY TO RADIO SYSTEMS CORPORATION. THIS DRAWING AND THE INFORMATION CONTAINED HEREIN SHALL NOT BE REPRODUCED NOR DISCLOSED TO ANYONE EXCEPT THOSE REQUIRING IT'S USE FOR RSC AUTHORIZED PURPOSES. THIS DOCUMENT SHALL BE DESTROYED OR RETURNED TO RSC WHEN NO LONGER REQUIRED FOR THESE PURPOSES.

DRAWN: Hapi	DATED: 04/21/2014	SIZE: C	RSC NUMBER: SCH_600-627	REV: 001
ENGINEER: Hapi	DATED: 04/21/2014	FILE NAME: SCHM-600-627_R01		
COPYRIGHT © RSC 2012		BOARD NUMBER:100-1193_R01		SHEET: 9 OF: 10

REVISION RECORD				
ECO/PRO	REV	DESCRIPTION	DATE	BY
RSC10647	001	Release to Production	06/17/2014	Hapi

I2C_0
[3,5,7,9]

AUDIO_CONT
[2,3,9]

JTAG/UART_0
[2,3]

USB_0
[3]

PWR_EN
[3,5]

VIBE_CTRL
[3]

AUDIO CODEC

JTAG

UART_0 (1.8V)

COMPANY CONFIDENTIAL

RADIO SYSTEMS CORPORATION
10427 Petsafe Way - Knoxville, TN 37932-3369 - (865)777-5404
SCHEMATIC TITLE: **TEK 2.0 HANDHELD GPS
868MHZ / 915 MHZ HAND HELD TRANSCEIVER**

THIS DRAWING IS THE PROPERTY OF AND PROPRIETARY TO RADIO SYSTEMS CORPORATION. THIS DRAWING AND THE INFORMATION CONTAINED HEREIN SHALL NOT BE REPRODUCED NOR DISCLOSED TO ANYONE EXCEPT THOSE REQUIRING ITS USE FOR RSC AUTHORIZED PURPOSES. THIS DOCUMENT SHALL BE DESTROYED OR RETURNED TO RSC WHEN NO LONGER REQUIRED FOR THESE PURPOSES.

DRAWN: Hapi	DATED: 04/21/2014	SIZE: C	RSC NUMBER: SCH-600-627	REV: 001
ENGINEER: Hapi	DATED: 04/21/2014	FILE NAME: SCHM-600-627_R01		
COPYRIGHT © RSC 2012		BOARD NUMBER:100-1193_R01		SHEET: 10 OF: 10

