



# Invisible Fence® Brand

**INDOOR COMPUTER COLLAR**

RIG00-14107

Owner's Manual

[www.InvisibleFence.com](http://www.InvisibleFence.com)

# Important Precautions

- Invisible Fence® Brand pet containment systems have contained over two million pets. However, there are some precautions you should take.
- Read and retain manuals: Read the entire Owner's Manual before using your new Invisible Fence® Brand pet avoidance system.
- Adhere to all warnings and cautions contained in any Invisible Fence® Brand manual.

**⚠ WARNING** WARNING indicates a hazardous situation, which, if not avoided, could result in death or serious injury.

**⚠ CAUTION** CAUTION used without the safety alert symbol, indicates a hazardous situation, which, if not avoided, could result in harm to your pet.

**⚠ NOTICE** NOTICE is used to address safe use practices not related to personal injury.

---

## ⚠ WARNING

- Never open a PowerCap® Battery, dispose of it in a fire, recharge it, expose it to heat above 212°F (100°C), or expose its contents to water. Doing so can cause leakage or explosion and may lead to personal injury.
- Note every pet can be trained to avoid the established boundary. Sometimes even a properly trained pet may cross the boundary. Therefore, Invisible Fence, Inc., as well as Invisible Fence® Distributors and Dealers, cannot guarantee the system will, in all cases, keep a customer's pet within the established boundary. Accordingly, if a customer has reason to believe that their pet may pose a danger to others, or harm itself, the customer should not rely solely upon the Invisible Fence® Brand pet containment system to keep the pet from crossing the boundary.
- Do not install, connect, or remove your system during a lightning storm. If the storm is close enough for you to hear thunder, it is close enough to create hazardous surges.

## ⚠ CAUTION

Read and follow the important instructions on how to avoid pressure necrosis. Proper fit of the Computer Collar® Unit is important. A Computer Collar® Unit worn for too long or made too tight on the pet's neck may cause skin damage. Ranging from redness to pressure ulcers; this condition is commonly known as bedsores.

The following tips will help keep your pets safe and comfortable. Millions of pets are comfortable while they wear stainless steel posts. Some pets are sensitive to contact pressure. You may find after some time that your pet is very tolerant of the Computer Collar® Unit. If so, you may relax some of these precautions. It is important to continue daily checks of the contact area. If redness or sores are found, discontinue use until the skin has fully healed.

- Avoid leaving the Computer Collar® Unit on the pet for more than 12 hours per day.
- When possible, reposition the Computer Collar® Unit on the pet's neck every 1 to 2 hours.
- Check the fit to prevent excessive pressure; follow the instructions in this manual.
- Never connect a leash to the Computer Collar® Unit; it will cause excessive pressure on the contacts.
- When using a separate collar for a leash, don't put pressure on the Computer Collar® Unit.
- Wash the pet's neck area and the contacts of the Computer Collar® Unit weekly with a damp cloth.
- Examine the contact area daily for signs of a rash or sore.
- If a rash or sore is found, discontinue use of the Computer Collar® Unit until the skin is healed.
- If the condition persists beyond 48 hours, see your veterinarian.

You may need to trim the hair in the area of the Correction Posts or switch to the longer Correction Post to ensure consistent contact. Never shave the pet's neck; this may lead to a rash or infection.

To prevent an unintended correction:

- The Computer Collar® Unit should not be on your pet when the system is tested.
- Remove the Computer Collar® Unit before making any changes to your system.
- Before replacing the Computer Collar® Unit on your pet, test the Avoidance Area and Width after any change.
- The use of any power source other than a PowerCap® Battery may cause a Computer Collar® Unit to operate erratically or fail. The use of unnecessary force may damage the case and render the PowerCap® Battery inoperable.
- Train your pet according to the instructions in the Invisible Fence® Brand training manuals. Complete all steps before allowing your pet to run free. Do not become overly confident if your pet has become conditioned to the Invisible Fence® Brand pet avoidance system sooner than expected.
- Your Invisible Fence® Brand Dealer has professionally installed your pet avoidance system and ensured it is working properly. You will want to perform periodic maintenance checks to make sure the system is functioning properly.
- Check the Invisible Fence® Brand avoidance transmitter periodically to make sure it is operating properly. To do this, simply bring the Computer Collar® Unit to the edge of the avoidance field to verify function.
- The avoidance transmitter has visual and audible signals to warn of a system malfunction. The avoidance transmitters should be installed where such signals may be easily seen and heard. If the avoidance transmitter is installed by the customer in an enclosed box, or in a place not readily accessible to the customer, the customer will not benefit from the system's warning functions, for which Invisible Fence, Inc., as well as Invisible Fence® Distributors and Dealers, assume no responsibility.
- Do not attempt to service any Invisible Fence® Brand equipment. Refer all service to your authorized Invisible Fence® Brand Dealer. Only your authorized Invisible Fence® Brand Dealer should make adjustments to your system.
- All Invisible Fence® Brand pet avoidance systems are designed for domesticated animal use only. Never attempt to use this product for a purpose not specifically described in this manual.

## **NOTICE**

- Use care around the indoor and outdoor avoidance loop so as not to cut the wire.
- If you have any questions about any aspect of your Invisible Fence® Brand pet avoidance system, call your Invisible Fence® Brand Dealer immediately.

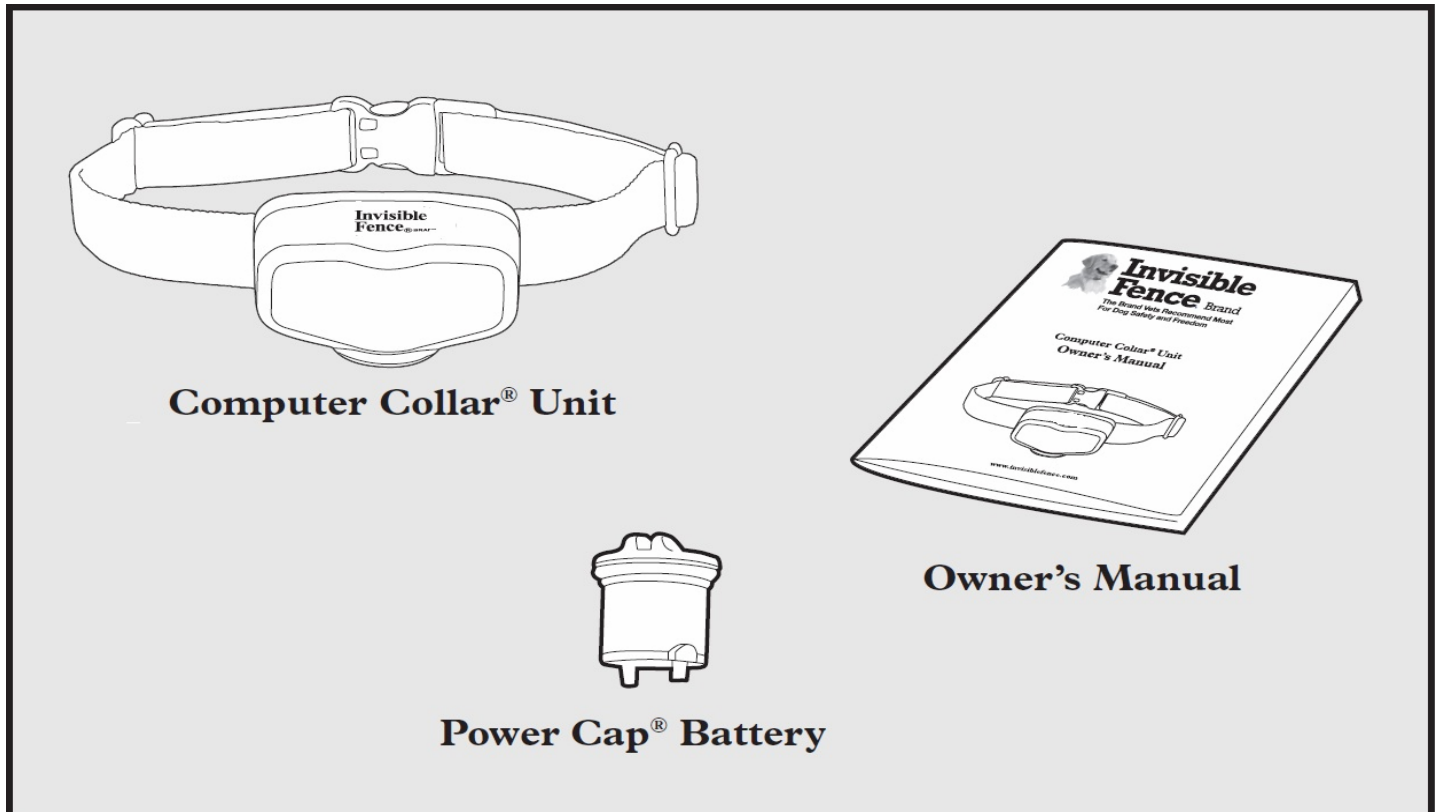
Congratulations on your purchase of the world's premier pet solution, the Invisible Fence® Brand. When professionally installed, the Invisible Fence® Brand pet avoidance system is backed with a one-year, money-back performance guarantee. The support of your Invisible Fence® Brand Dealer gives you peace of mind that your pet remains safe at home. Refer to the back of your sales contract for complete details.

---

# Table of Contents

Components .....	5
How the System Works .....	5
Operating Guide .....	6
Troubleshooting .....	8
Battery Disposal .....	9
Compliance .....	9

# Components



## How the System Works

The Shields® Computer Collar® Unit is compatible with all Shields® avoidance products and the Invisible Fence® Brand Doorman™ Electronic Pet Door.

When your pet approaches the established avoidance area, the Computer Collar® Unit generates a tone, vibration and/or correction to remind your pet of the boundary. With training and praise, your pet will quickly learn to avoid the established boundary.

*Definition: A correction is a training term used to describe an action taken to discourage unwanted pet behavior. The Computer Collar® Unit applies a correction when your pet crosses the boundary of an Invisible Fence® Brand electronic pet avoidance system. Corrections are used in combination with rewards to alter unwanted pet behavior.*

Your Invisible Fence® Brand system will only work when:

- The avoidance transmitter is charged or plugged into a functional standard electric outlet, via an approved transformer.
- The avoidance transmitter is ON and producing a signal in the desired area.
- The Computer Collar® Unit is correctly fitted and worn by your pet. The Computer Collar® Unit must be adjusted so that both of the correction posts touch your pet's skin.
- The Power Cap® Battery in the Computer Collar® Unit is good and correctly installed. See page 6 and 7 for proper Power Cap® Battery operation.

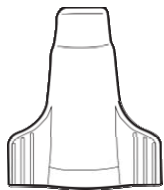
**About Thunder and Electrical Storms:** Even though the Invisible Fence® Brand avoidance system is connected to an approved grounded outlet (North American customers only), it is still possible that it may be damaged during a thunderstorm, or when an electrical storm is in the area. After a storm has ended, check the signal field width. See page 8 for periodic maintenance checks.

# Operating Guide

## The Shields® Computer Collar® Unit

The Shields® Computer Collar® Unit is a patented microprocessor-controlled device, powered by a patented PowerCap® Battery.

*ONLY use the post tightening tool to tighten the stainless steel correction posts. DO NOT secure the correction posts in the Computer Collar® Unit with any kind of glue or adhesive.*

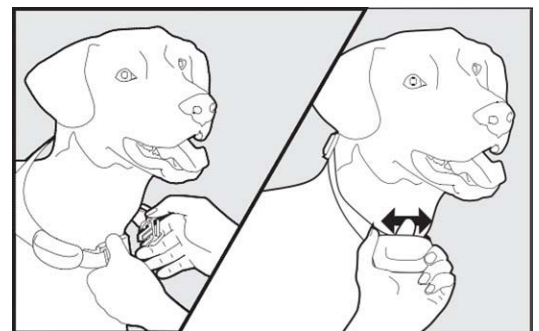
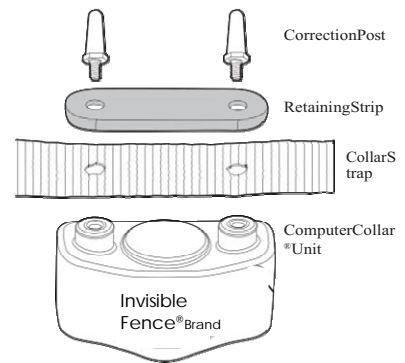


### Fitting the Computer Collar® Unit

To work properly, the correction posts on the Computer Collar® Unit must touch your pet's skin.

1. Position the collar strap high on your pet's neck with the Computer Collar® Unit under your pet's jaw.
2. To avoid having a collar that is too tight on a thick-haired pet, thin some hair away in order to allow the correction posts to make contact with the skin. Do not shave the pet's neck.
3. Tighten the collar strap of the Computer Collar® Unit appropriately. Adjust the collar strap so it is snug enough to slide only one finger between a correction post and your pet's skin.
4. Adjust the fit of the Computer Collar® Unit as necessary as your pet's coat, weight, and age change. Your pet's coat may change from season to season.
5. Allow your pet to become accustomed to its new Computer Collar® Unit. The collar must be removed each night during the first month of training. This ensures proper fit and avoids the possibility of skin irritation.
6. After training is complete, remove your pet's Computer Collar® Unit each night if possible. This will help prevent irritation. However, if this is not possible, please check the tightness of the collar each time you feed your pet by removing the collar and then replacing it back on your pet.
7. The Computer Collar® Unit is waterproof. If the nylon collar strap becomes wet, it is recommended that it be removed from your pet and be allowed to air dry before replacing the collar on your pet's neck.

### Shields® Computer Collar® Unit



## Computer Collar® Unit PowerCap® Battery Status

The Computer Collar® Unit monitors PowerCap® Battery status. Each time you insert a PowerCap® Battery into your Computer Collar® Unit it performs a battery test. The LED status indicator will show a flashing light, indicating power status.

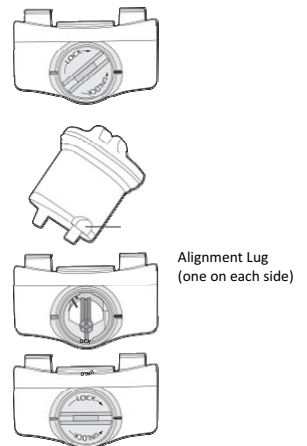
At Start-Up		
Color	Indicator	Status
GREEN	5 flashes	Battery strength is good
RED	4 flashes	Battery strength is weakening; replace at first opportunity
NOLIGHT		Power Cap® is dead; replace immediately

Should the red LED flash continuously while your pet is wearing the Computer Collar® Unit, the PowerCap® Battery strength is dangerously low; replace PowerCap® Battery immediately.

Replace your existing PowerCap® Battery with one supplied via your PowerCap® Battery plan, available through your Invisible Fence® Brand Dealer. If a fresh PowerCap® Battery is not available, contact your Invisible Fence® Brand Dealer for a replacement. Once a replacement PowerCap® Battery is installed and the signal field checked (see page 8 for instructions on checking the signal field), put the Computer Collar® Unit on your pet. The Invisible Fence® Brand pet containment system is now ready.

## Changing the PowerCap® Battery – Shields® Computer Collar®

- Use a small, thin coin to remove the PowerCap® Battery from the Shields® Computer Collar® Unit. Insert the coin in the slot on top of the PowerCap® Battery and turn it 45 degrees counter-clockwise. Do not push down while turning. The PowerCap® Battery will rotate while the spring inside will push the PowerCap® Battery out of the Shields® Computer Collar® Unit's battery chamber.
- Install a new PowerCap® Battery using the following steps:
  - Line up the lugs on the bottom of the PowerCap® Battery with the grooves in the sides of the Shields® Computer Collar® Unit's battery chamber. Make sure the metal tabs on the bottom of the PowerCap® Battery are not bent.
  - Place the PowerCap® Battery into the chamber while gently, but firmly, turning it clockwise 45 degrees with your fingers.
  - Use a small, thin coin in the slot on top of the PowerCap® Battery to turn it clockwise until the slot on the top of the PowerCap® Battery is lined up with the two small raised tabs on the bottom of the Computer Collar® Unit. Do not over-tighten by turning the slot past the tabs on the Computer Collar® Unit.



On average, the PowerCap® Battery should be changed every 3 months. Low temperatures, the number of times the pet challenges the pet containment system boundary, vibration settings and improper collar fit can all reduce PowerCap® Battery life.

### **⚠ WARNING**

*The use of any power source other than an Invisible Fence Brand® PowerCap® Battery may cause a Computer Collar® Unit to operate erratically or fail. The use of funnecessary force may damage the case and render the PowerCap® Battery inoperable. NEVER open a PowerCap® Battery, dispose of it in fire, recharge it, expose it to heat above 212F (100C), or expose its contents to water. Doing so can cause leakage or explosion and may lead to personal injury.*



## Periodic Maintenance Checks

System Device	How Often	What to Look For
Shields® Computer Collar® Unit	Daily	<ul style="list-style-type: none"> <li>• Check PowerCap® Battery status light</li> <li>• Review chart for status indicators (see page 7)</li> </ul>
Signal Field	Monthly and after a thundershower	<ul style="list-style-type: none"> <li>• Verify the signal field is active throughout the avoidance area, see Monthly Signal Field Test</li> </ul>

### Monthly Signal Field Test

You should always be aware of your system's signal field. Always take the Computer Collar® Unit off your pet prior to measuring the signal field.

1. Hold the Invisible Fence® Brand Computer Collar® Unit so it is parallel to the signal field.
2. Hold the collar so it is about the same height and at the same angle as it will be when the pet is wearing it.
3. Walk slowly toward the signal field. The Computer Collar® Unit will activate when you reach the signal field. Do NOT touch the correction posts at this time!
4. Move back into the safe area, raise the Computer Collar® Unit to twice the height of your pet and repeat Step 3. The Computer Collar® Unit will activate when you reach the signal field.

If the Computer Collar® Unit does not sound a warning tone where the edge of the signal is supposed to be, immediately call your Invisible Fence® Brand Dealer for service.

## Troubleshooting

Symptom	Possible Cause	Action
Pet is not responding to the Shields® Computer Collar® Unit.	<ul style="list-style-type: none"> <li>• PowerCap® Battery in the Computer Collar® Unit is dead or weak.</li> <li>• Computer Collar® Unit is not fitted properly on the pet.</li> <li>• Power is not supplied to the avoidance transmitter.</li> <li>• Pet needs additional training.</li> </ul>	<ul style="list-style-type: none"> <li>• Replace the PowerCap® Battery.</li> <li>• See page 6 for properly fitting the collar.</li> <li>• Make sure avoidance transmitter battery is charged or power supply is plugged in.</li> <li>• Contact your Invisible Fence® Brand Dealer for additional pet training.</li> </ul>
Pet will not enter the area around the avoidance transmitter.	<ul style="list-style-type: none"> <li>• Pet needs additional training.</li> </ul>	<ul style="list-style-type: none"> <li>• Contact your Invisible Fence® Brand Dealer for additional pet training.</li> </ul>
Computer Collar® Unit not responding to signal field.	<ul style="list-style-type: none"> <li>• PowerCap® Battery in the Computer Collar® Unit is dead or weak.</li> <li>• Signal field wire has a break.</li> <li>• Power is not supplied to the transmitter or power is out.</li> </ul>	<ul style="list-style-type: none"> <li>• Replace the PowerCap® Battery.</li> <li>• Make sure transmitter power supply is plugged in.</li> <li>• Contact your Invisible Fence® Brand Dealer to check signal field and fix break.</li> </ul>

## Battery Disposal

Separate collection of spent batteries is required in many regions; check the regulations in your area before discarding spent batteries. Please see page 7 of your manual for instructions on how to remove the battery pack for separate disposal. The Computer Collar® Unit operates on 1 Lithium (Li-MnO<sub>2</sub>) battery with a 3 Volt, 160 mAh capacity, replace only with an equivalent battery that can be obtained from your Invisible Fence® Brand Dealer.

## Perchlorate Battery

Perchlorate Material—special handling may apply. See [www.dtsc.ca.gov/hazardouswaste/perchlorate](http://www.dtsc.ca.gov/hazardouswaste/perchlorate).

## Important Recycling Advice

Please respect the Waste Electrical and Electronic Equipment regulations in your country. This equipment must be recycled. If you no longer require this equipment, do not place it in the normal municipal waste system.

Please return it to where it

was purchased in order that it can be placed in our recycling system. If this is not possible, please contact your Invisible Fence® Brand Dealer.

## Compliance

### US and Canada

Shields® Computer Collar®

IC: 2721A-3002768

FCC ID: KE3-3002768

#### FCC NOTE:

This device complies with Part 15 of the FCC Rules.

Operation is subject to the following two conditions: (1) this device may not cause harmful interference, and (2) this device must accept any interference received, including interference that may cause undesired operation.

THE MANUFACTURER IS NOT RESPONSIBLE FOR ANY RADIO OR TV INTERFERENCE CAUSED BY UNAUTHORIZED MODIFICATIONS OR CHANGE TO THIS EQUIPMENT. SUCH MODIFICATIONS OR CHANGE COULD VOID AND CHANGE AN ANTENNA WHICH THE MANUFACTURER PROVIDES. IT IS THE USER'S AUTHORITY TO OPERATE THE EQUIPMENT.

#### IC NOTE:

This device complies with Industry Canada licence-exempt RSS standard(s): Operation is subject to the following two conditions: (1) this device may not cause interference, and (2) this device must accept any interference, including interference that may cause undesired operation of the device.

## European Union



This equipment has been tested and found to comply with relevant EU Low Voltage and R&TTE Directives. Before using this equipment outside the EU countries, check with the relevant local R&TTE authority. Unauthorized changes or modifications to the equipment that are not approved by Radio Systems Corporation are in violation of EU R&TTE regulations, could void the user's authority to operate the equipment, and void the warranty.

This product is in full compliance with the provisions of the R&TTE - Directive 1999/05/EEC. The Declaration of Conformity can be found at: <http://www.invisiblefence.com/international/declarations-of-conformity.asp>.

Dealer Name: \_\_\_\_\_

Dealer Phone: \_\_\_\_\_

Notes:

800-578-3647(USA)  
(865)777-5404(International)400-  
1451/1

©2013 Radio Systems®  
Corporation All rights reserved.

Protected by Patents:

U.S.:

Canada:

U.K.:

Ireland:

France: #0720780, #

Germany: #