

US Tech
FCC ID:
IC:
Test Report Number:
Issue Date:
Customer:
Model:

FCC P15.247/RSS-210
KE3-3002645
2721A-3002645
13-0175
May 31, 2013
Radio Systems Corporation
300-2645

Internal Photographs

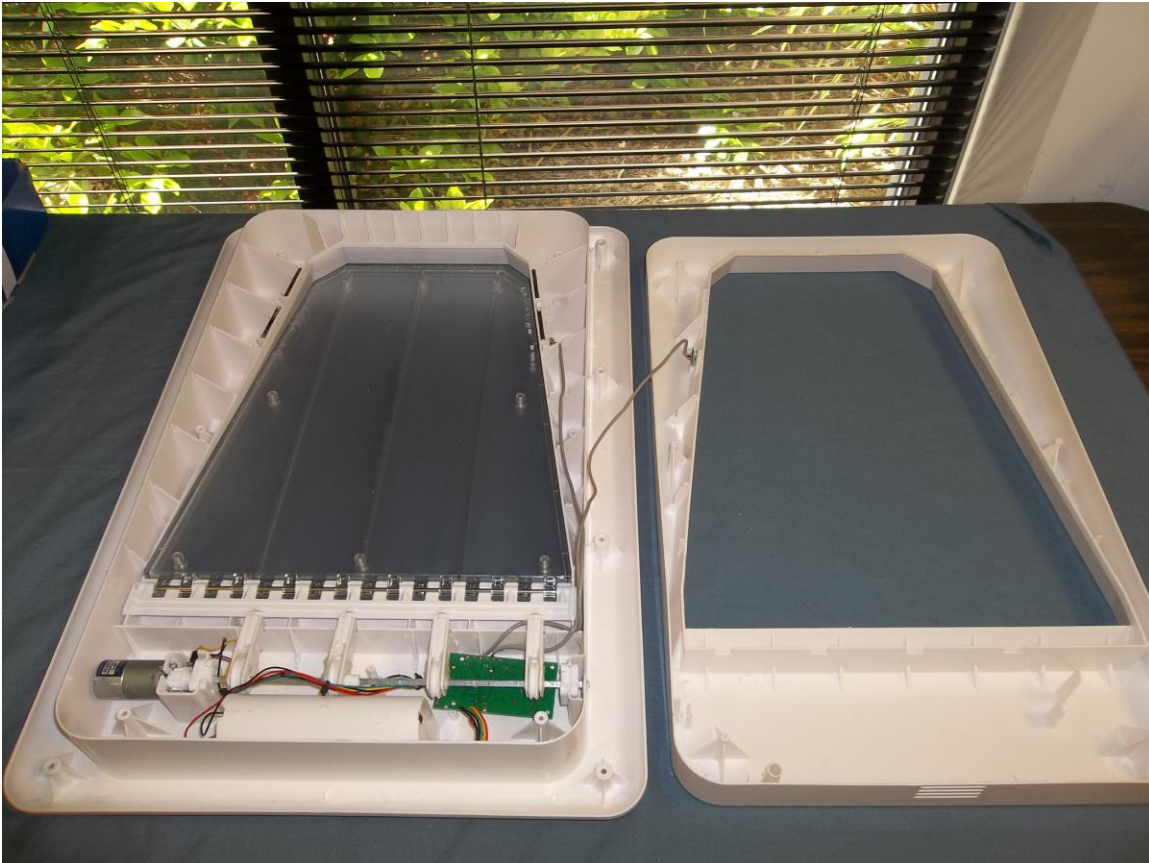


Figure 1 – EUT, Shell Opened

US Tech
FCC ID:
IC:
Test Report Number:
Issue Date:
Customer:
Model:

FCC P15.247/RSS-210
KE3-3002645
2721A-3002645
13-0175
May 31, 2013
Radio Systems Corporation
300-2645

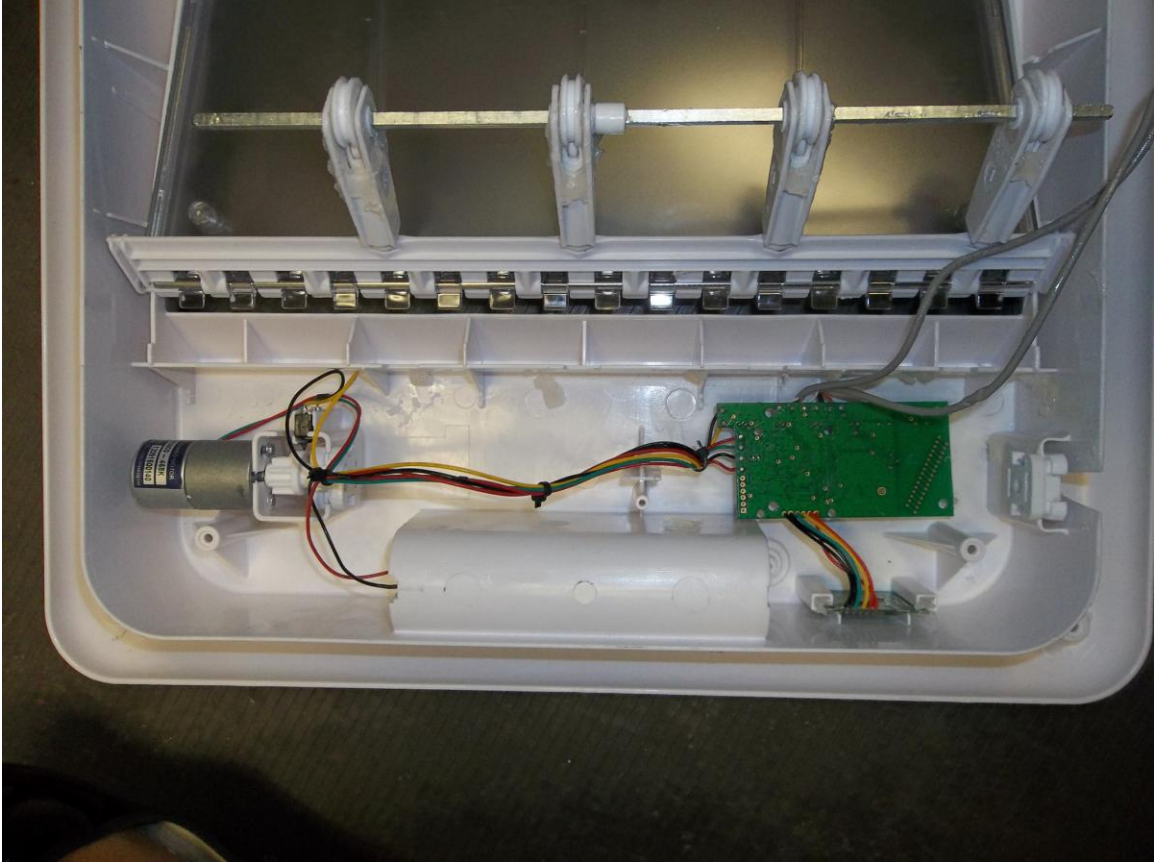


Figure 2 - Motor and Main Control Board

US Tech
FCC ID:
IC:
Test Report Number:
Issue Date:
Customer:
Model:

FCC P15.247/RSS-210
KE3-3002645
2721A-3002645
13-0175
May 31, 2013
Radio Systems Corporation
300-2645

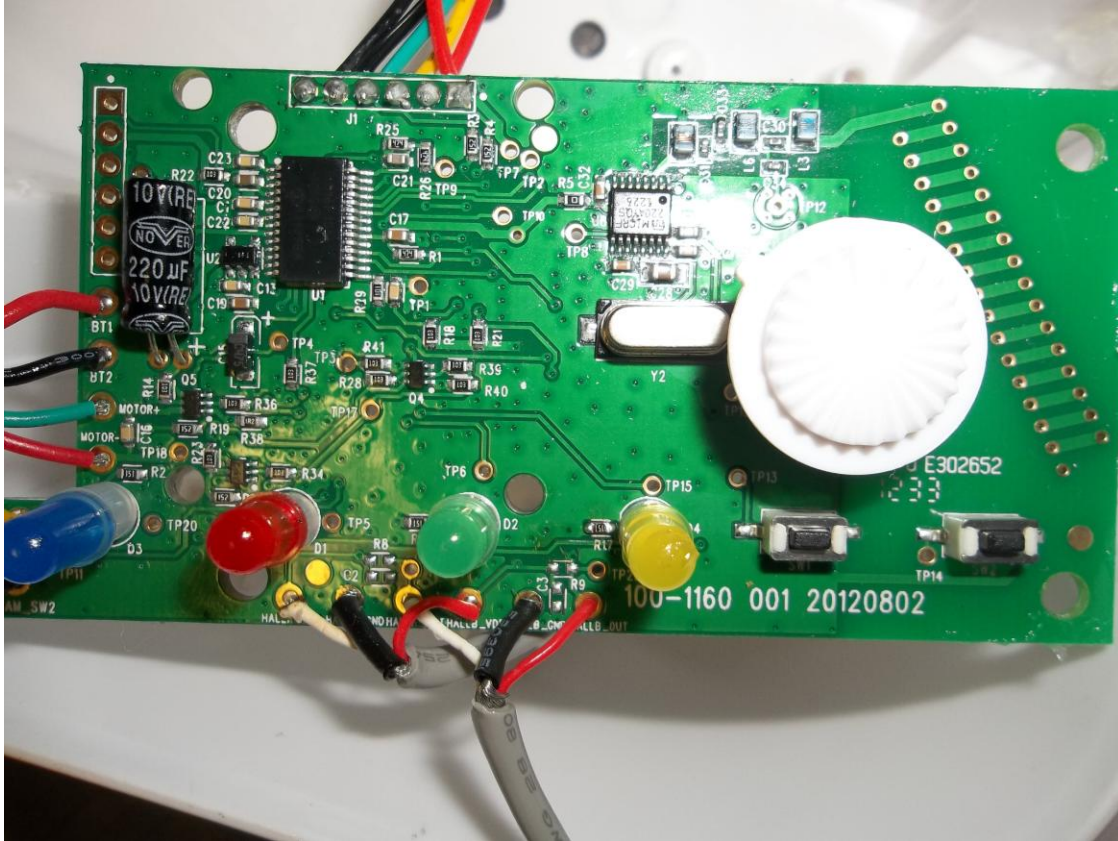


Figure 3 - Main Control Board

US Tech
FCC ID:
IC:
Test Report Number:
Issue Date:
Customer:
Model:

FCC P15.247/RSS-210
KE3-3002645
2721A-3002645
13-0175
May 31, 2013
Radio Systems Corporation
300-2645

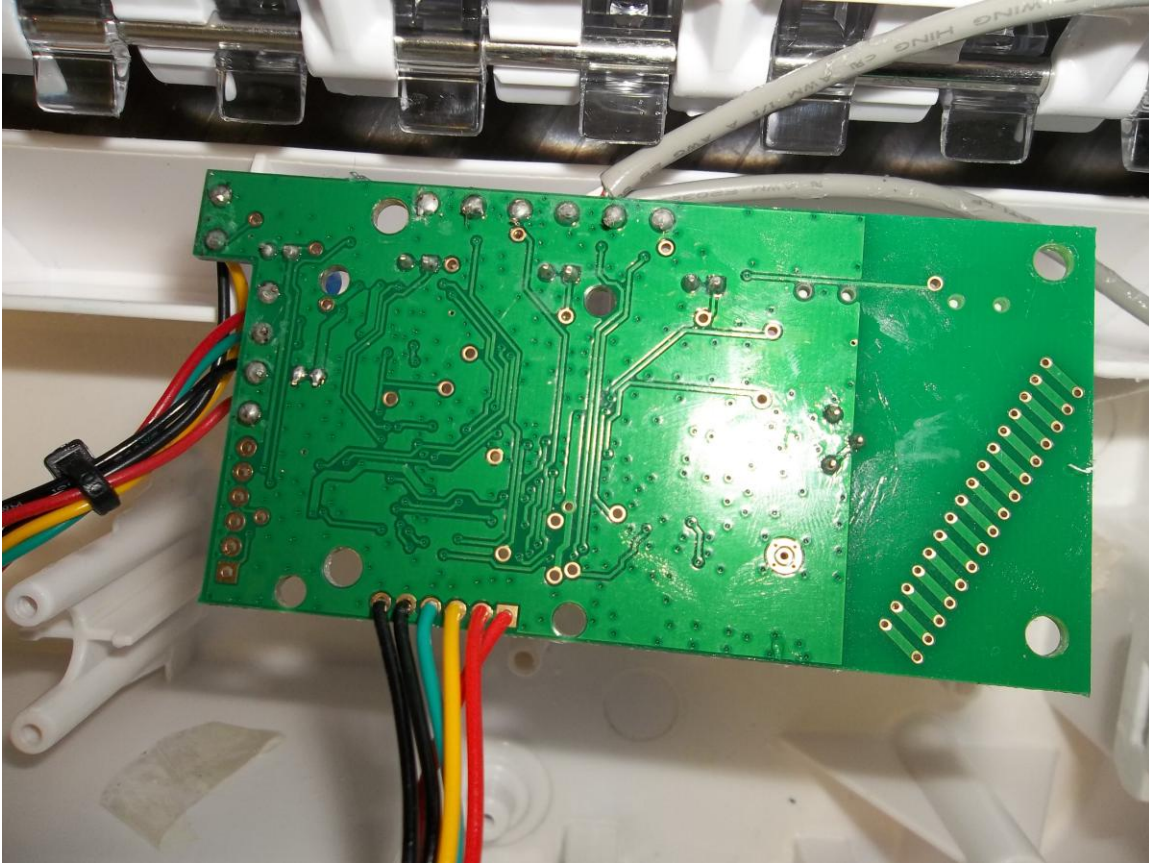


Figure 4 - Backside of Control Board

US Tech
FCC ID:
IC:
Test Report Number:
Issue Date:
Customer:
Model:

FCC P15.247/RSS-210
KE3-3002645
2721A-3002645
13-0175
May 31, 2013
Radio Systems Corporation
300-2645

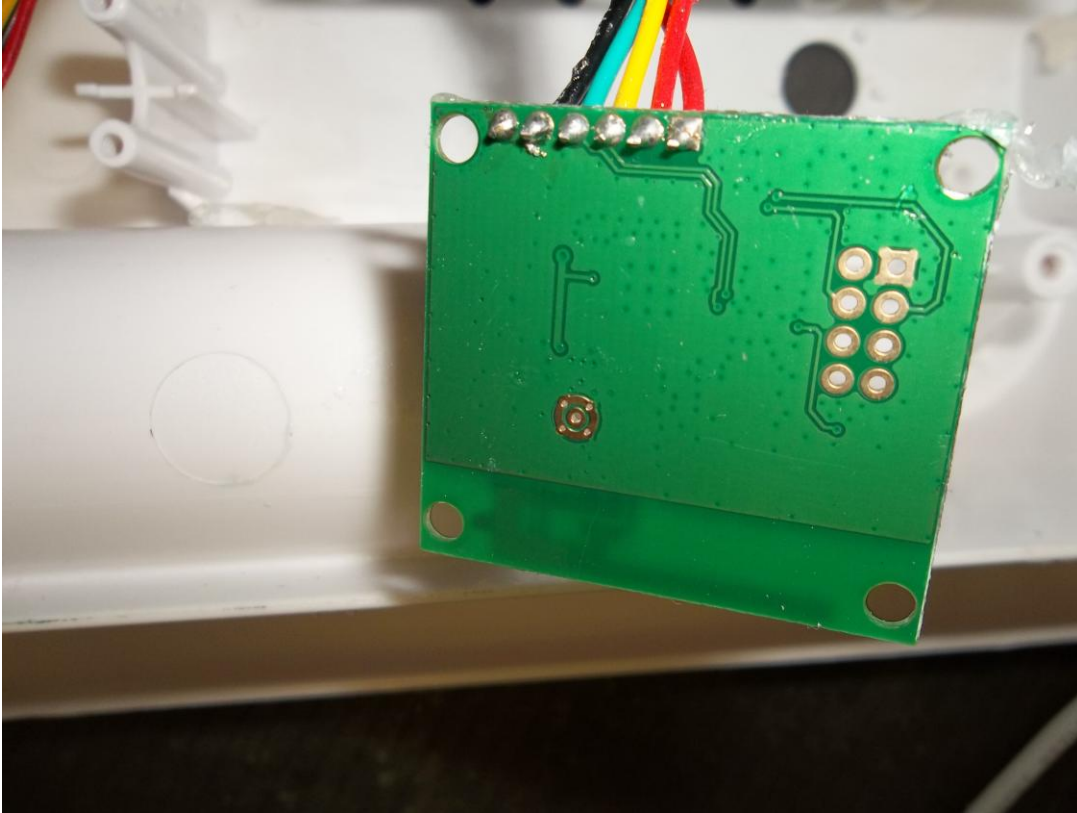


Figure 5 - Trace Antenna

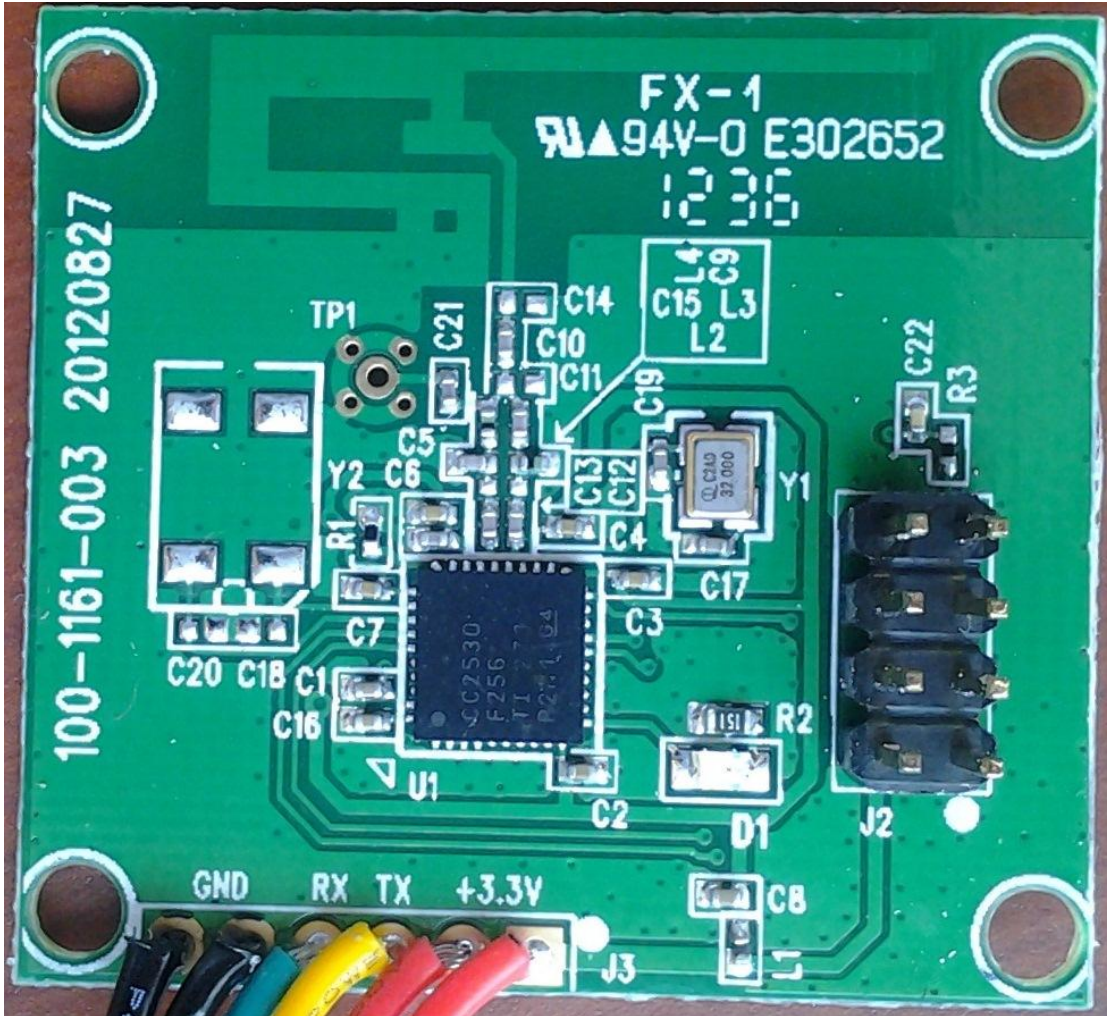


Figure 6 - Front Side of Trace Antenna

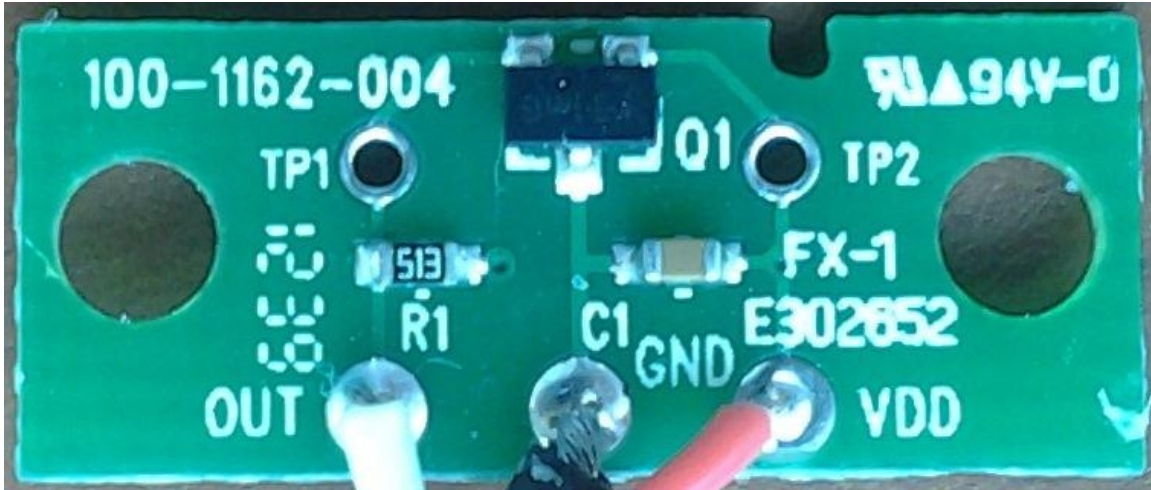


Figure 7 - Hall Effect Circuit Board, Front



Figure 8 - Hall Effect Circuit Board, Back

US Tech
FCC ID:
IC:
Test Report Number:
Issue Date:
Customer:
Model:

FCC P15.247/RSS-210
KE3-3002645
2721A-3002645
13-0175
May 31, 2013
Radio Systems Corporation
300-2645



Figure 9 - Battery Compartment