

US Tech Test Report:  
Report Number:  
Issue Date:  
Customer:  
Model:  
FCC ID:  
IC:

FCC P15.209/IC RSS-210  
13-0013  
April 16, 2013  
Radio Systems Corporation  
3002564  
KE3-3002564  
2721A-3002564

---

## INTERNAL PHOTOGRAPHS



**Figure 1- Back Half of EUT**

US Tech Test Report:  
Report Number:  
Issue Date:  
Customer:  
Model:  
FCC ID:  
IC:

FCC P15.209/IC RSS-210  
13-0013  
April 16, 2013  
Radio Systems Corporation  
3002564  
KE3-3002564  
2721A-3002564



**Figure 2- Front Half of EUT**



Figure 3- Common Mode Filter, Component Side



Figure 4- Common Mode Filter, Solder Side

US Tech Test Report:  
Report Number:  
Issue Date:  
Customer:  
Model:  
FCC ID:  
IC:

FCC P15.209/IC RSS-210  
13-0013  
April 16, 2013  
Radio Systems Corporation  
3002564  
KE3-3002564  
2721A-3002564

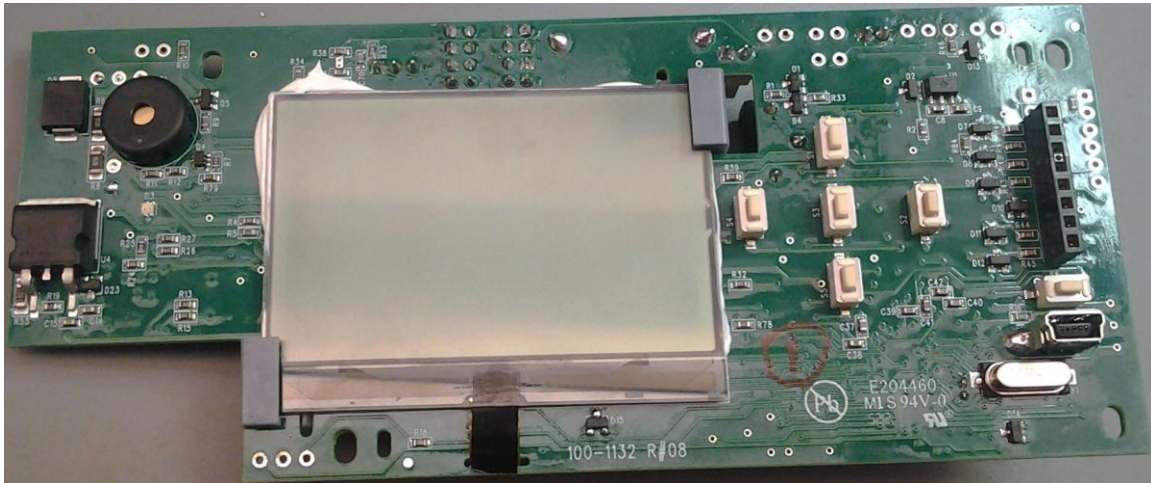


Figure 5- Main PCB w/ LCD Display – Top Side

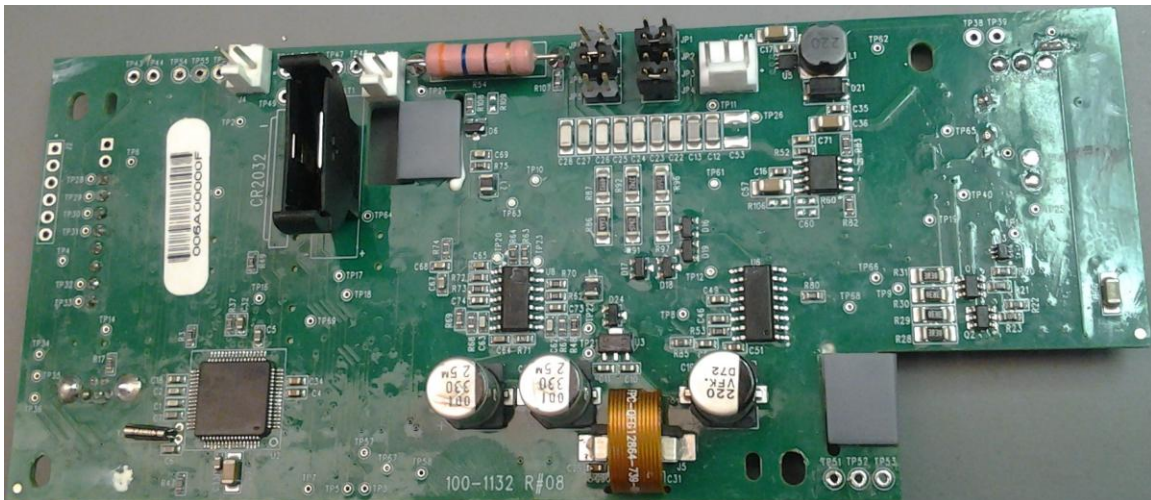


Figure 6- Main PCB – Bottom Side

US Tech Test Report:  
Report Number:  
Issue Date:  
Customer:  
Model:  
FCC ID:  
IC:

FCC P15.209/IC RSS-210  
13-0013  
April 16, 2013  
Radio Systems Corporation  
3002564  
KE3-3002564  
2721A-3002564

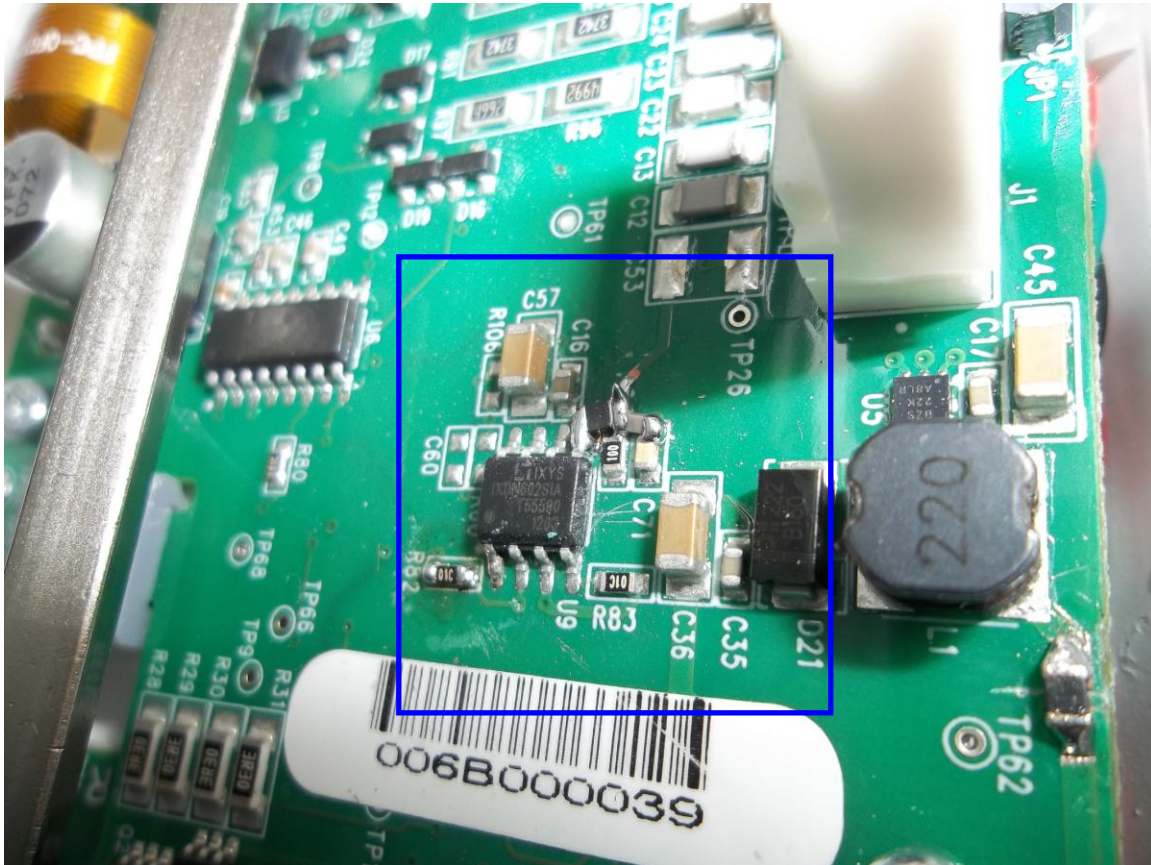


Figure 7- Modification on main PCB (see schematic for details)

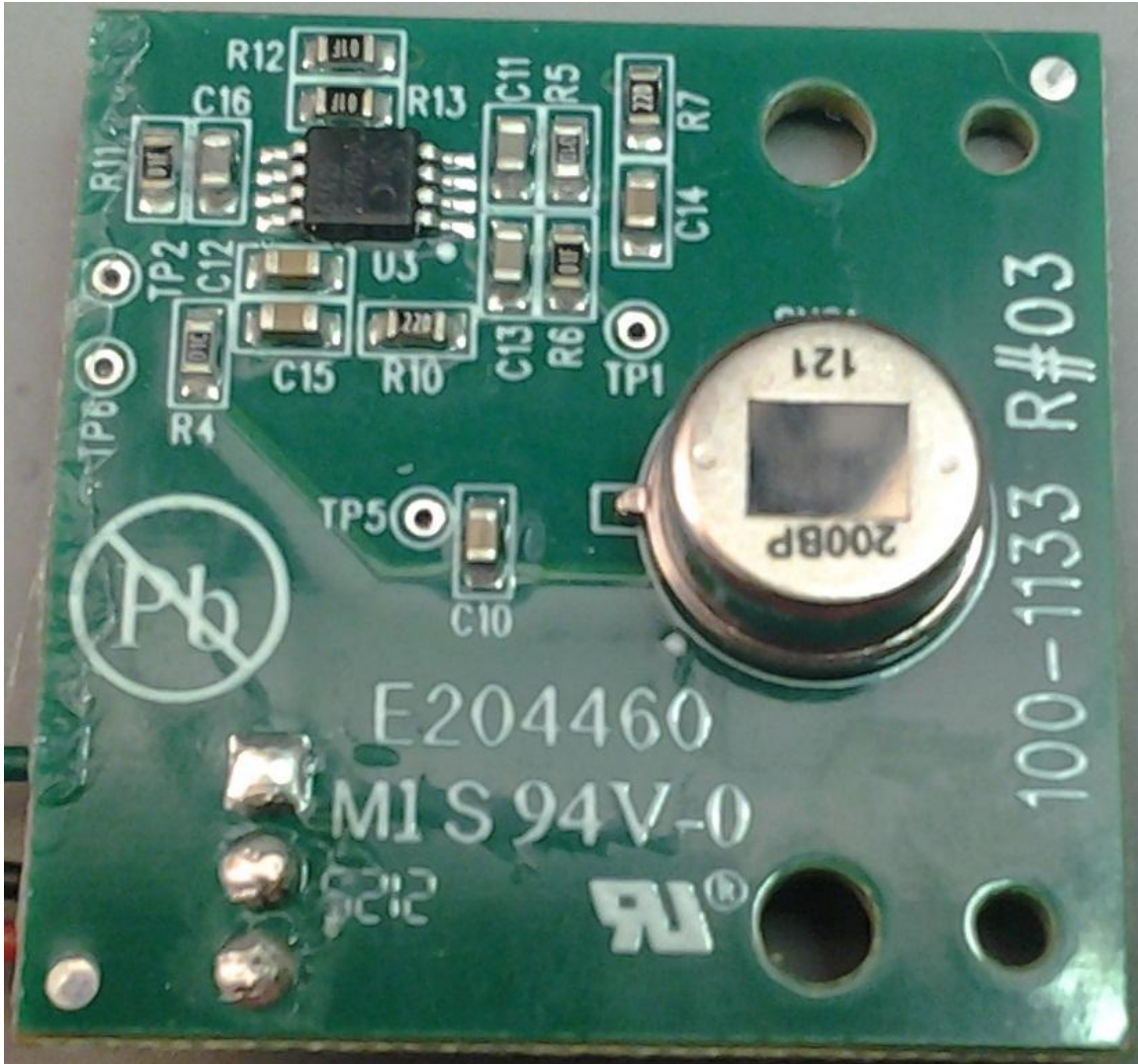
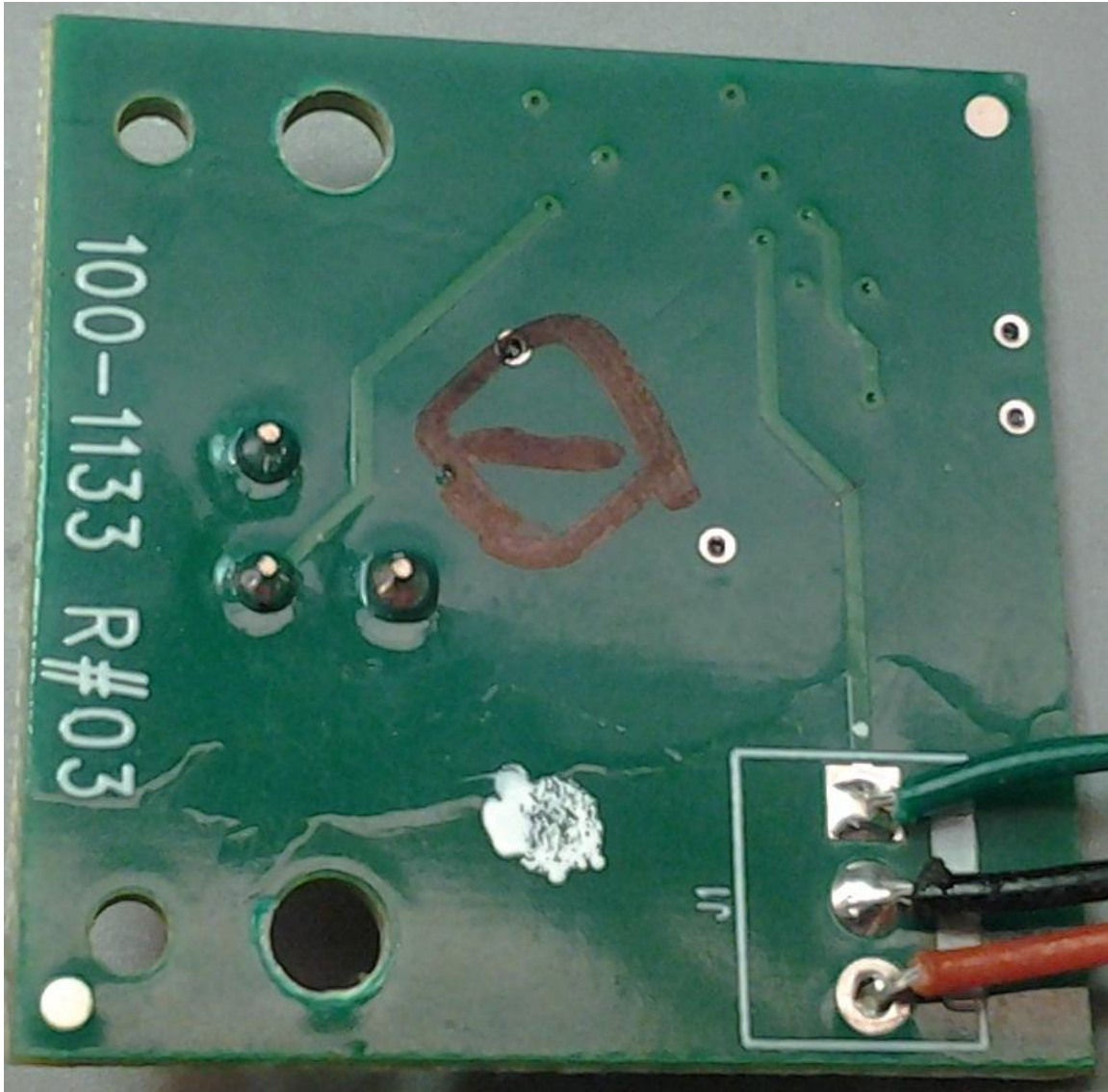


Figure 8- Sensor, Component Side

US Tech Test Report:  
Report Number:  
Issue Date:  
Customer:  
Model:  
FCC ID:  
IC:

FCC P15.209/IC RSS-210  
13-0013  
April 16, 2013  
Radio Systems Corporation  
3002564  
KE3-3002564  
2721A-3002564



**Figure 9- Sensor, Solder Side**

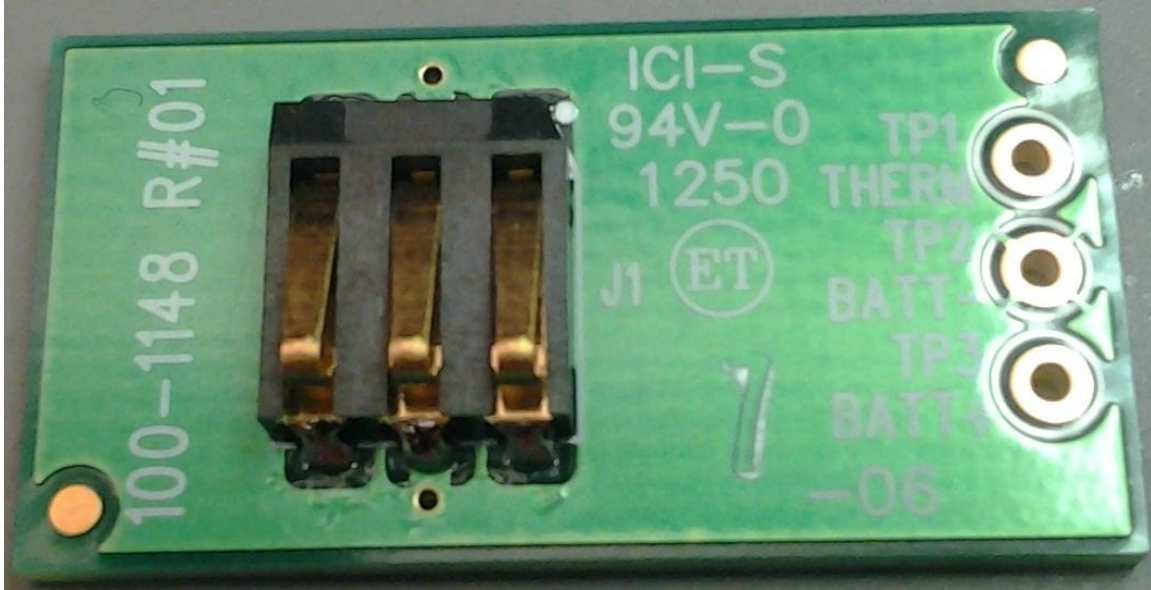


Figure 10- Battery PCB, Component Side

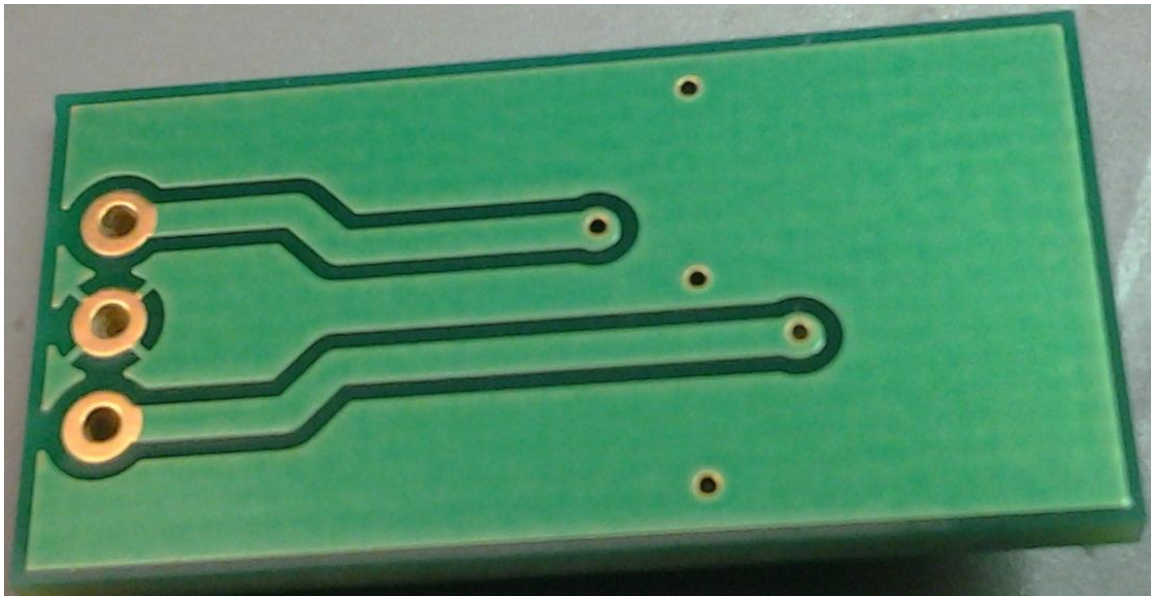


Figure 11- Battery PCB, Solder Side