

US Tech Test Report:  
Report Number:  
Issue Date:  
Customer:  
Model:  
FCC ID:  
IC:

FCC P15.209/IC RSS-210  
13-0006  
April 12, 2013  
Radio Systems Corporation  
300-2539  
KE3-3002539  
2721A-3002539

---

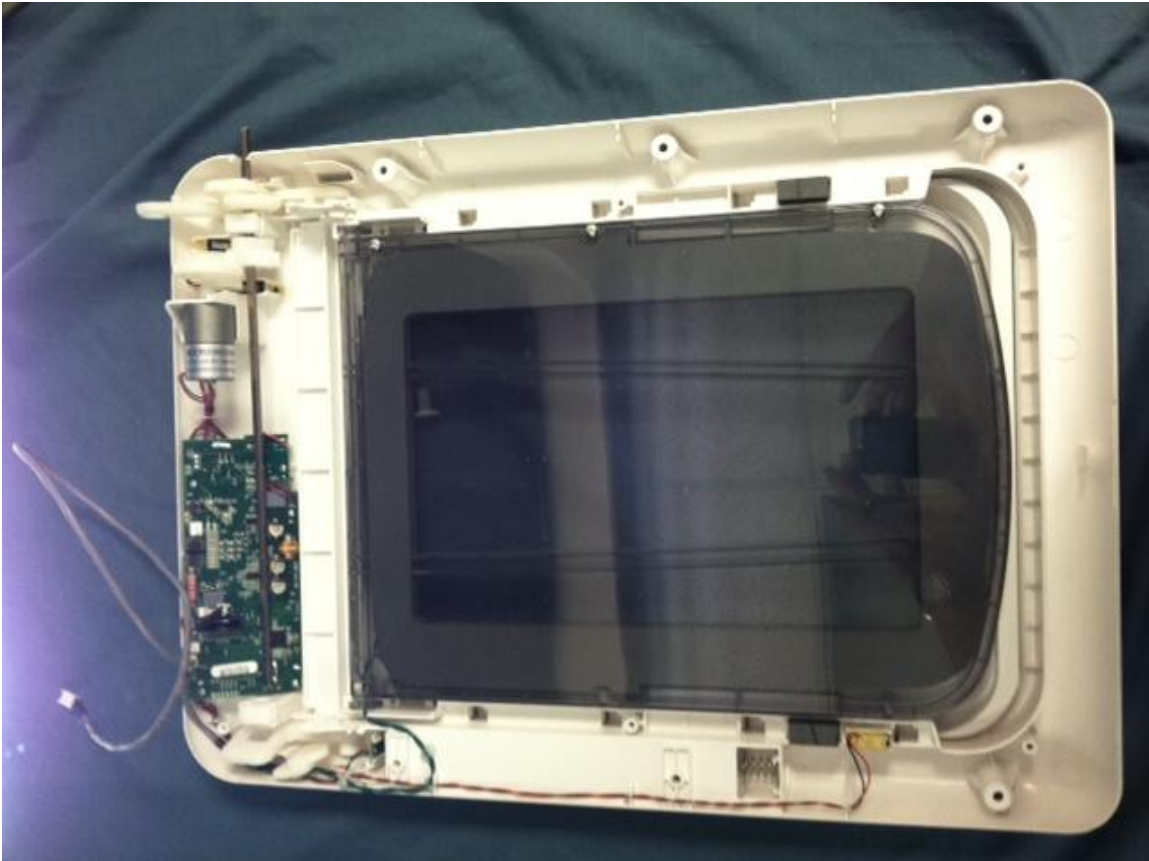
## INTERNAL PHOTOGRAPHS



**Figure 1- Back half of EUT**

US Tech Test Report:  
Report Number:  
Issue Date:  
Customer:  
Model:  
FCC ID:  
IC:

FCC P15.209/IC RSS-210  
13-0006  
April 12, 2013  
Radio Systems Corporation  
300-2539  
KE3-3002539  
2721A-3002539



**Figure 2- Front half of EUT**

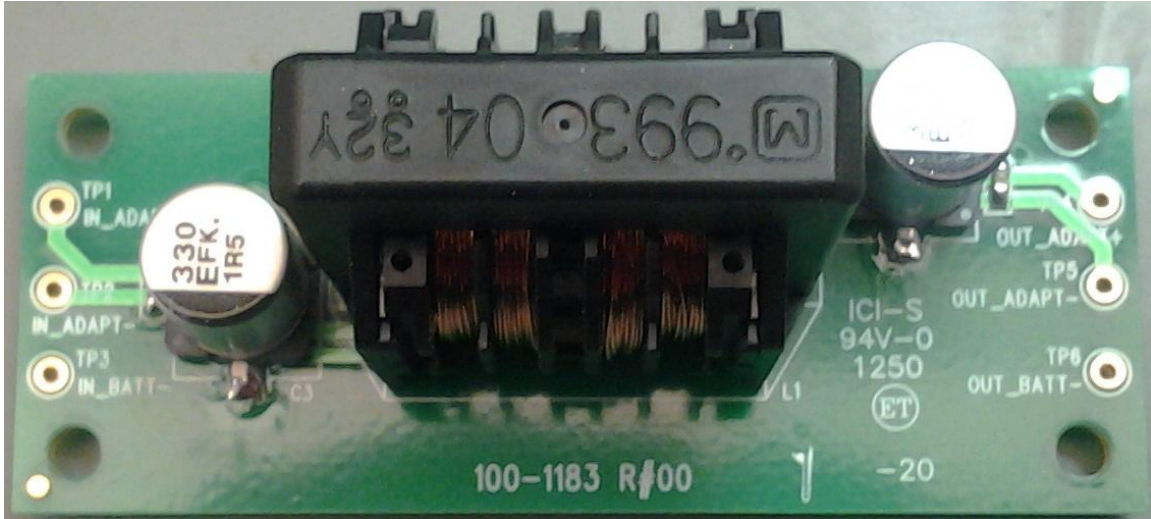


Figure 3- Common mode filter, component side

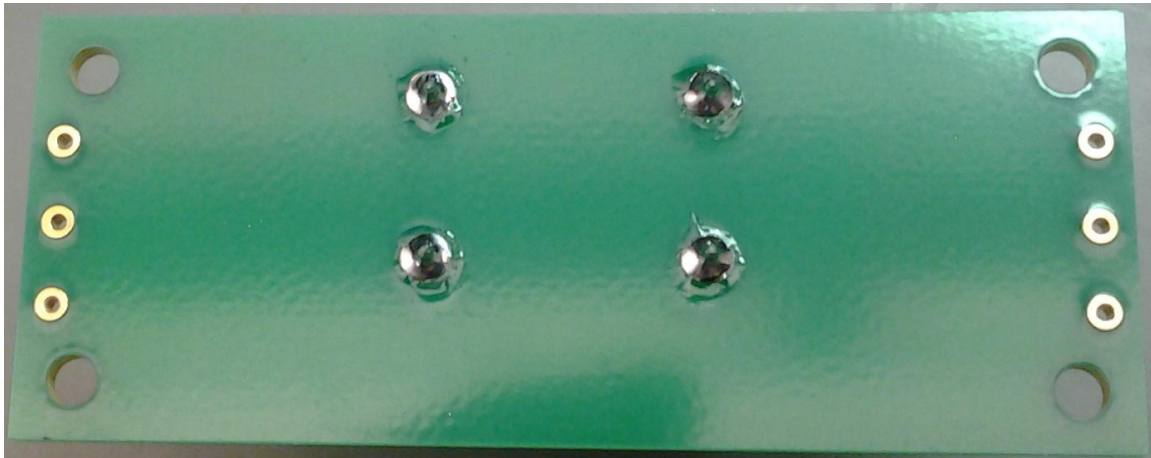


Figure 4- Solder side

US Tech Test Report:  
Report Number:  
Issue Date:  
Customer:  
Model:  
FCC ID:  
IC:

FCC P15.209/IC RSS-210  
13-0006  
April 12, 2013  
Radio Systems Corporation  
300-2539  
KE3-3002539  
2721A-3002539

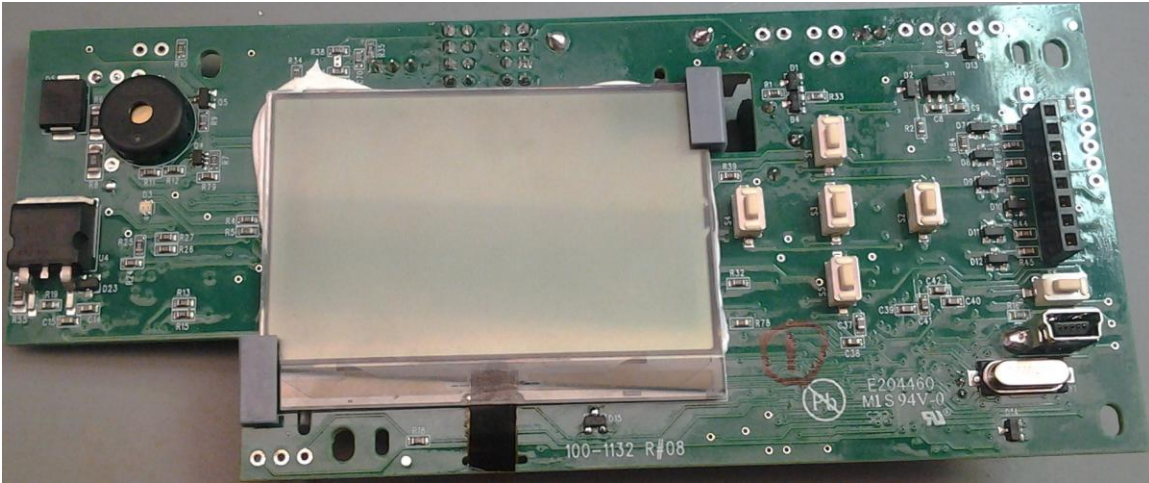


Figure 5- Main PCB w/ LCD Display – Top Side

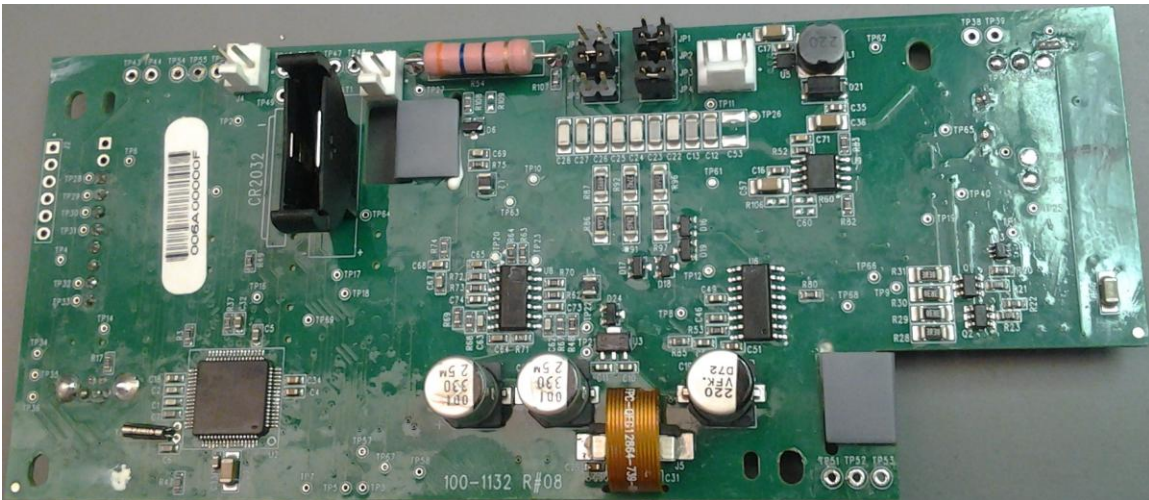


Figure 6- Main PCB – Bottom Side

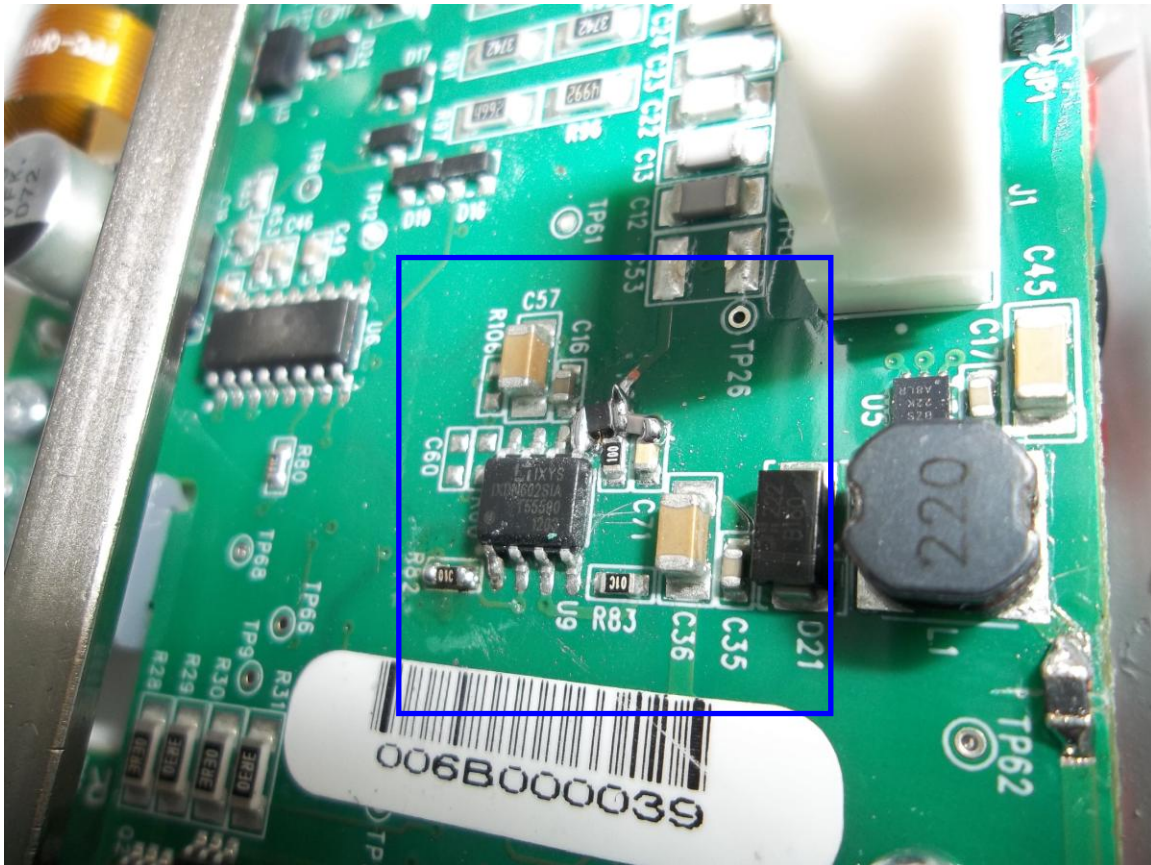


Figure 7- Modification on main PCB (see schematic for details)

US Tech Test Report:  
Report Number:  
Issue Date:  
Customer:  
Model:  
FCC ID:  
IC:

FCC P15.209/IC RSS-210  
13-0006  
April 12, 2013  
Radio Systems Corporation  
300-2539  
KE3-3002539  
2721A-3002539

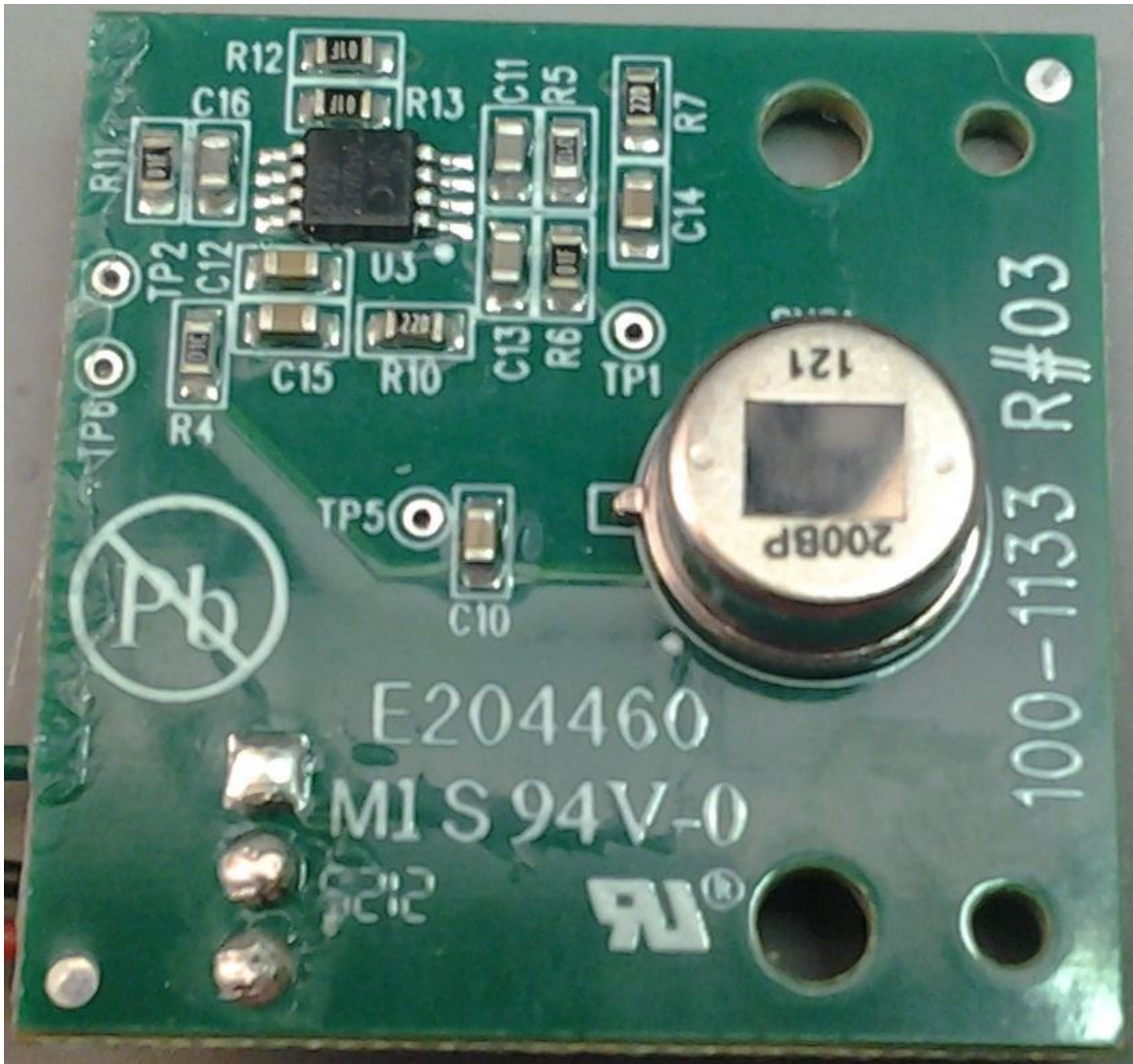


Figure 8- Sensor, Component Side

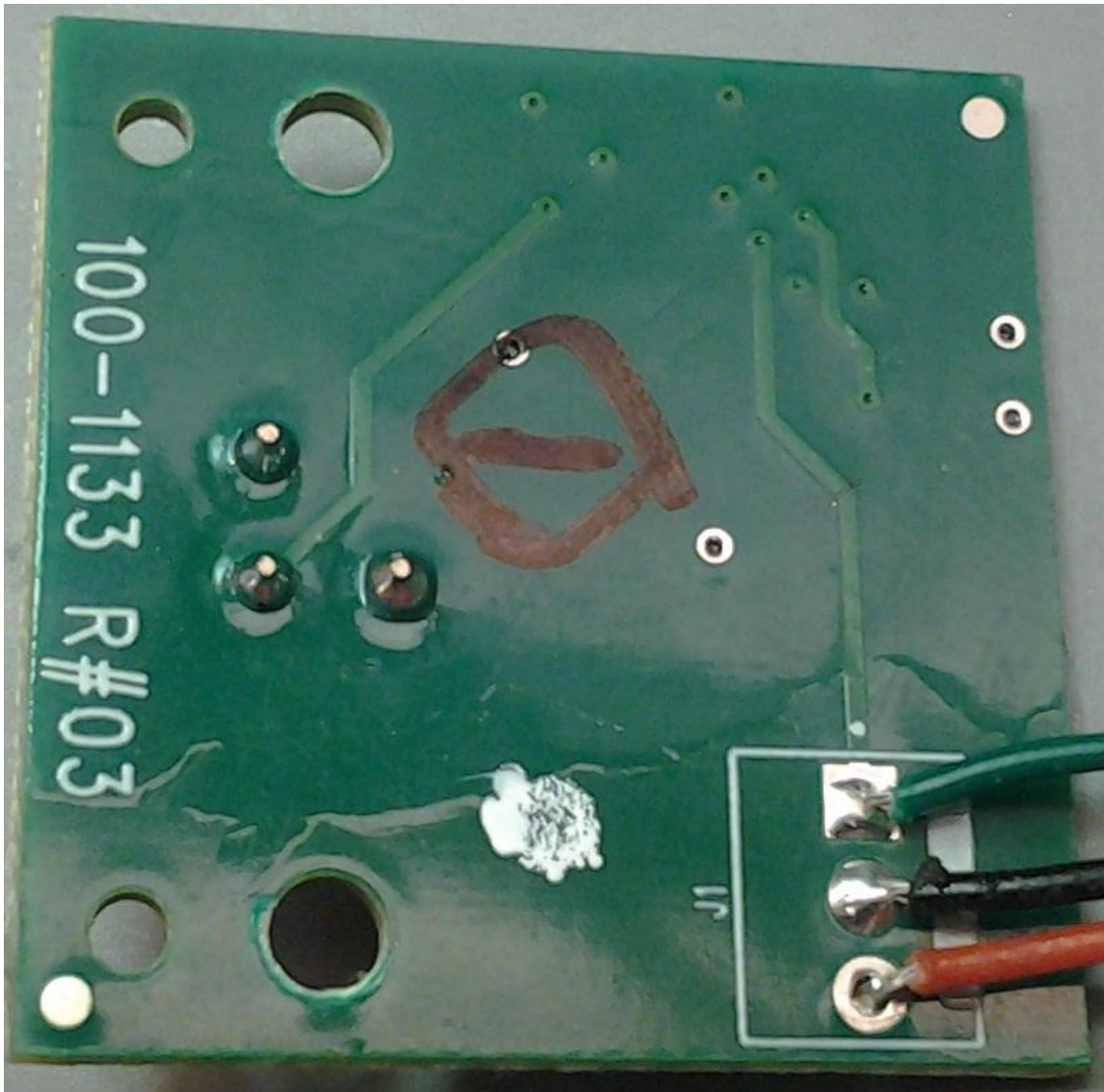


Figure 9- Sensor, Solder Side

US Tech Test Report:  
Report Number:  
Issue Date:  
Customer:  
Model:  
FCC ID:  
IC:

FCC P15.209/IC RSS-210  
13-0006  
April 12, 2013  
Radio Systems Corporation  
300-2539  
KE3-3002539  
2721A-3002539

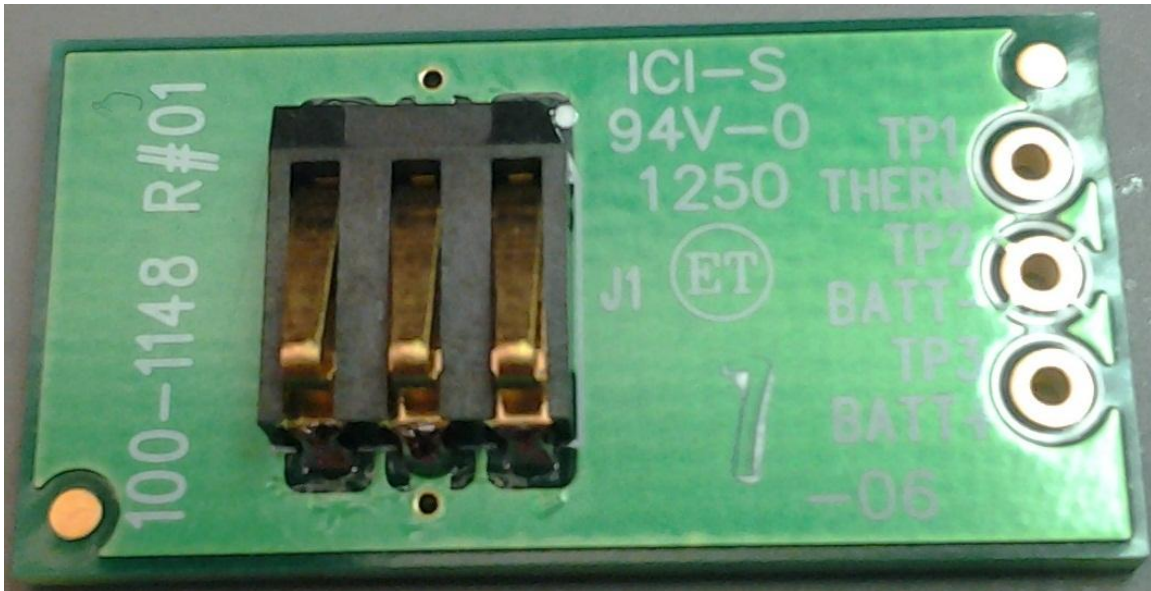


Figure 10- Battery PCB, Component Side

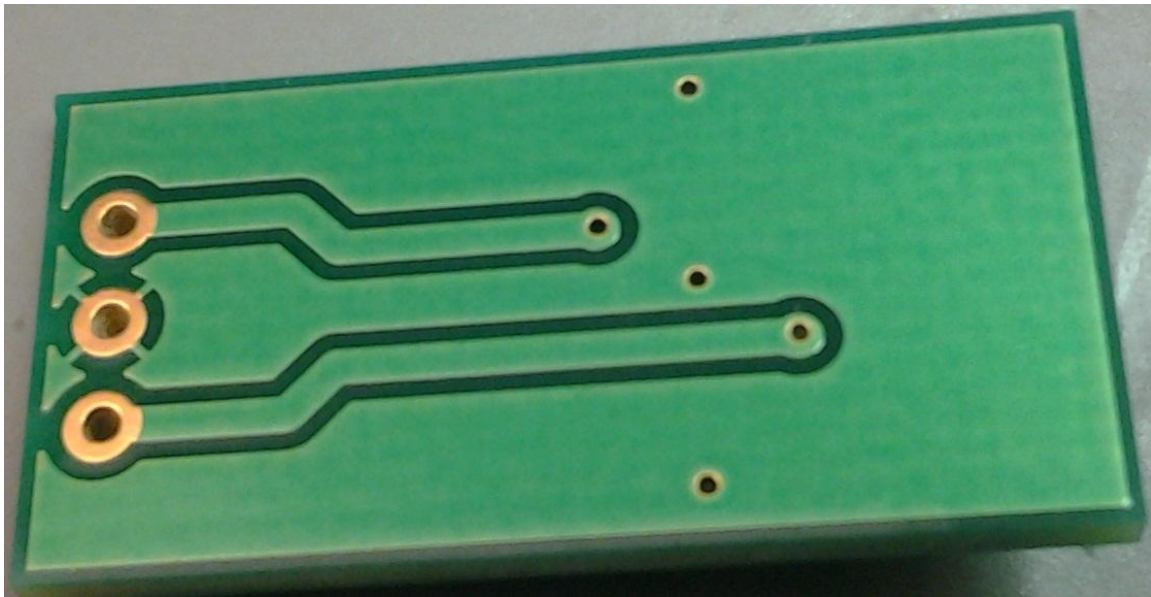


Figure 11- Solder Side