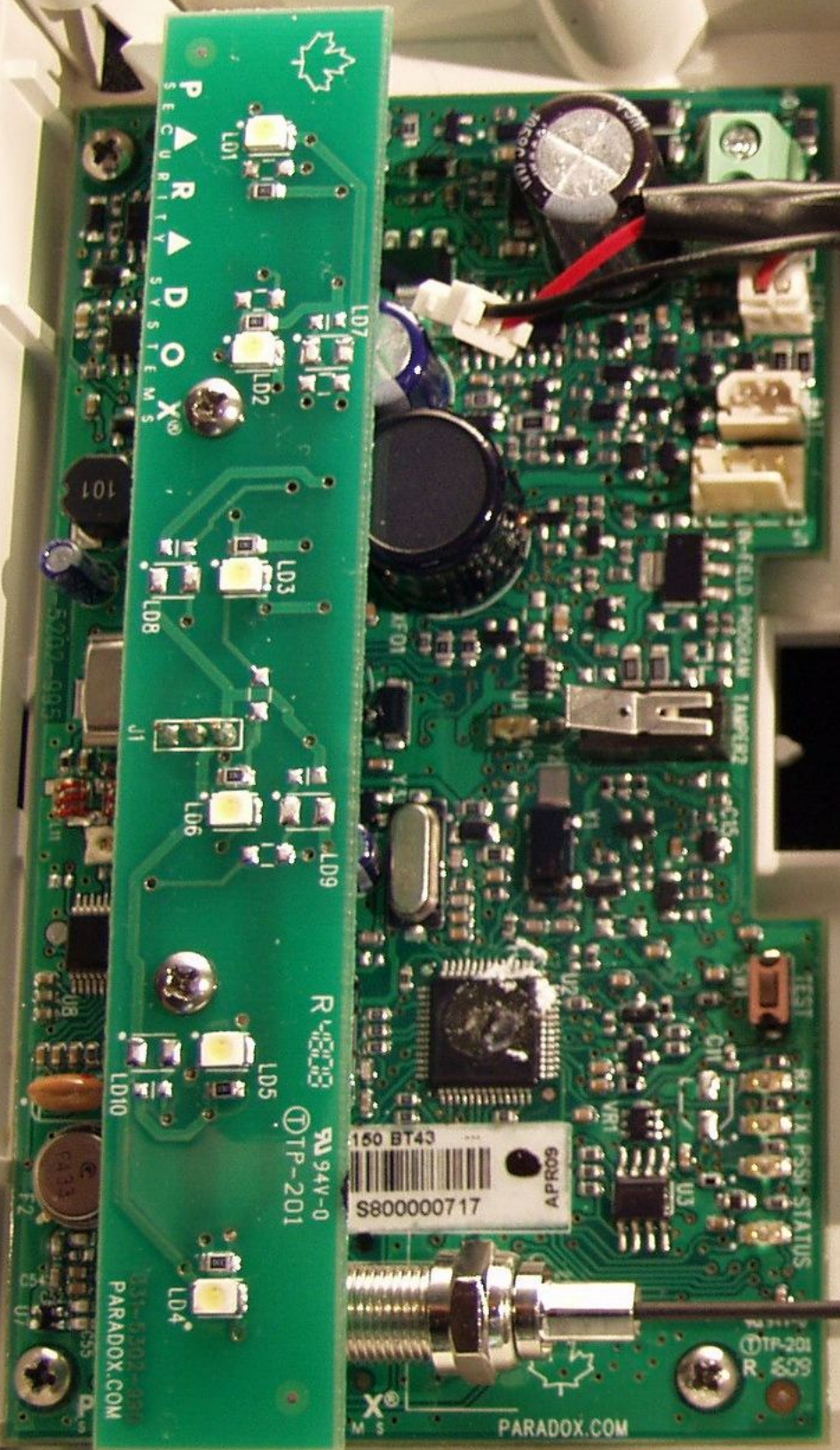




Battery Replacement
1. Remove the battery cover.
2. Press and Release
3. Insert the battery.
4. Press and Release
5. Repeat steps 1-4 for the other battery.



+

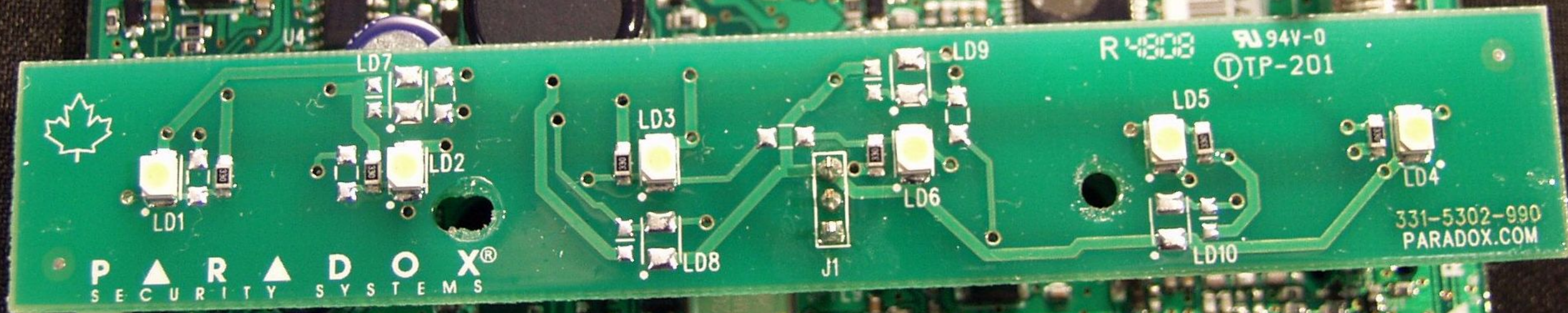
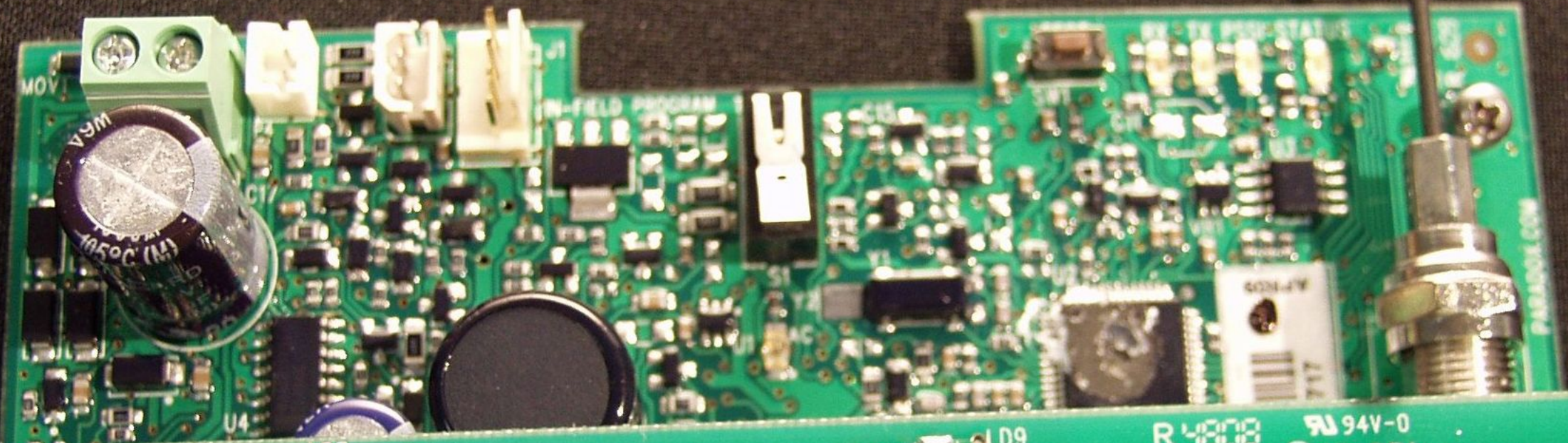
+

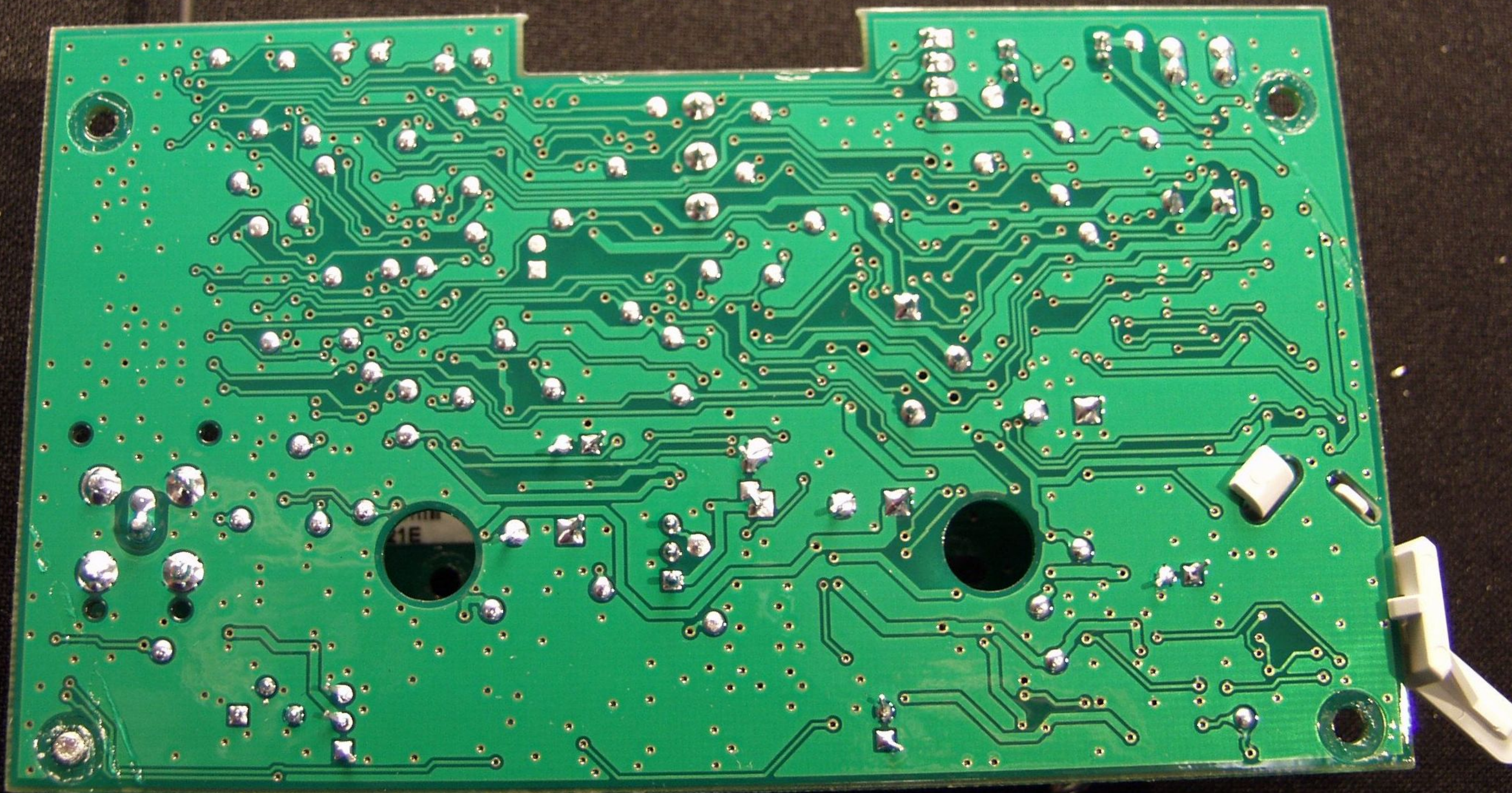
APR09
S800000717
150 BT43

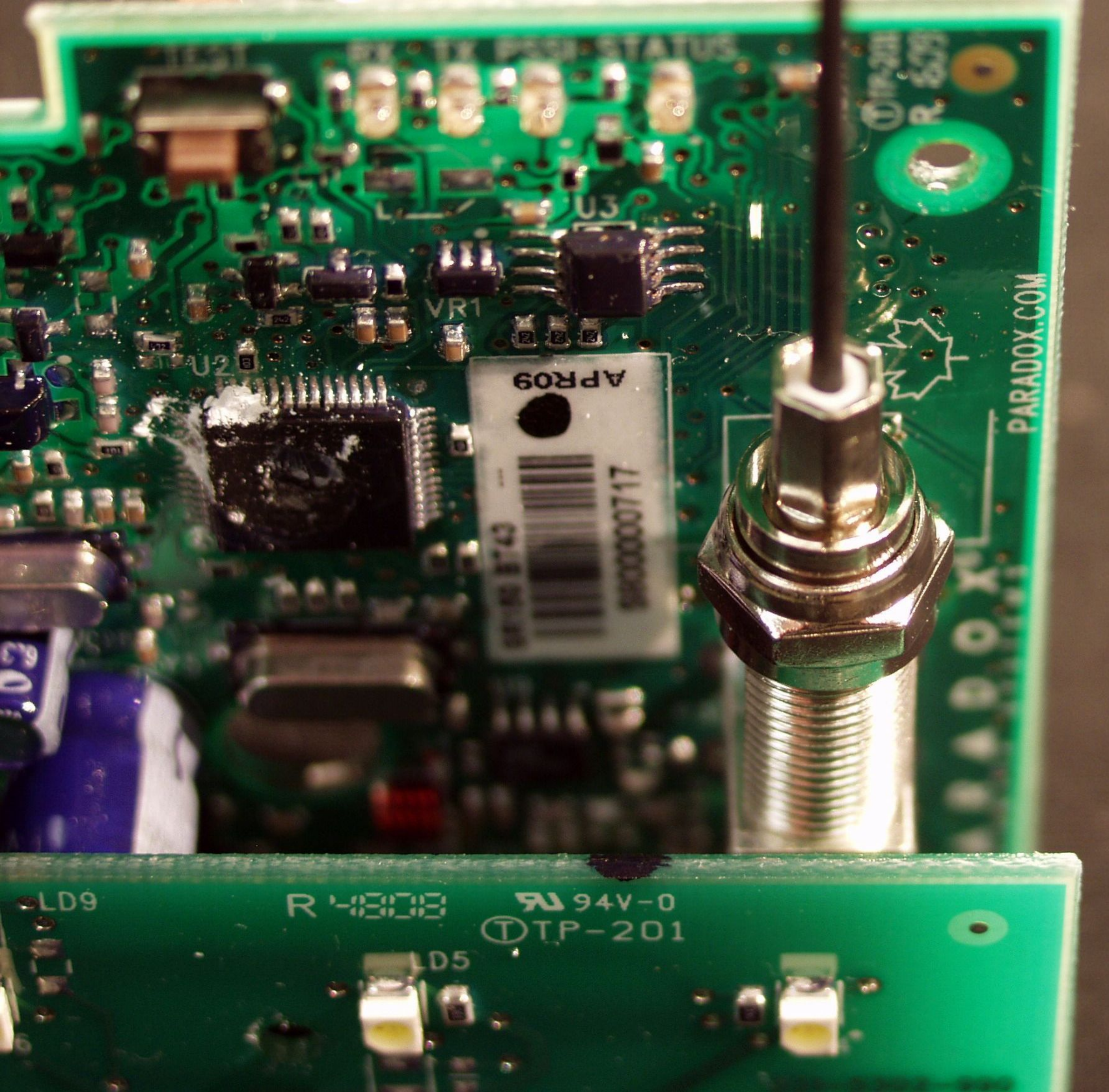
PA 94V-0
DTP-201

PARADOX.COM

PARADOX.COM







APR09
073856
00000717

VR1

U3

U2

LD9

R 4000

94V-0

TP-201

LD5

PARADOX.COM

PARADOX.COM

TEST

RX

TX

PSSI

STATUS

94V-0

TP-201

R 15003



U3

VR1



PARADOX.COM



LD9

R 4803

94V-0

TP-201



