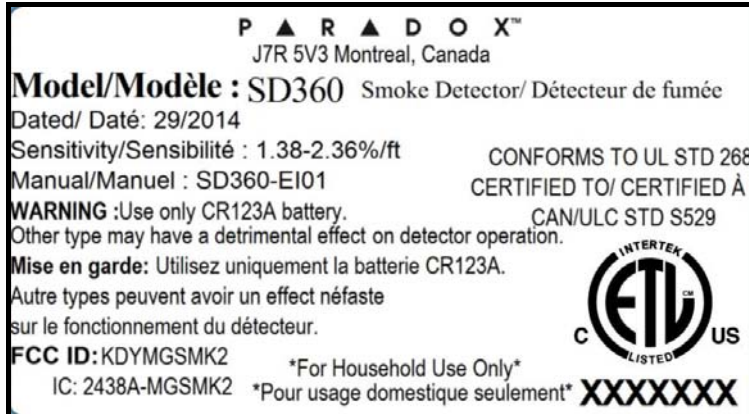
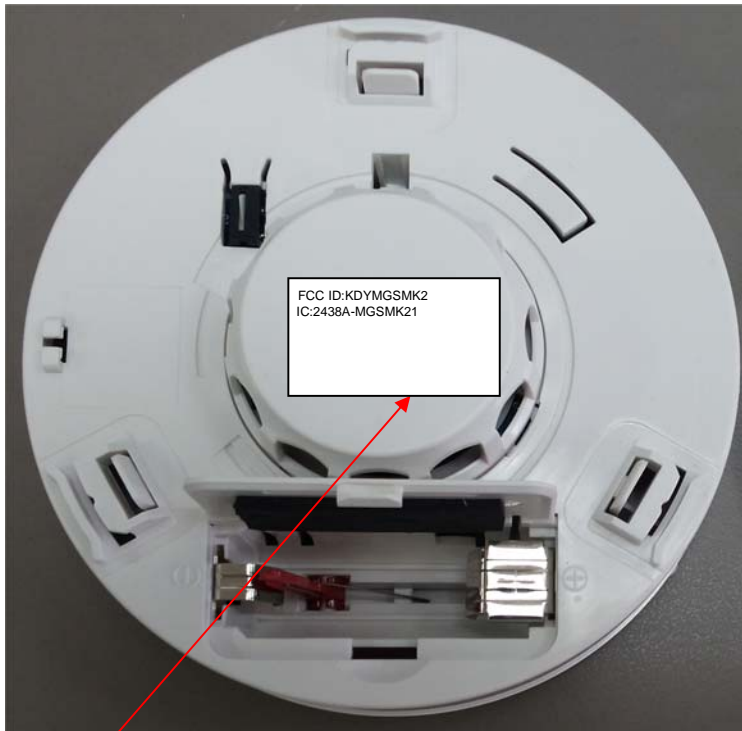


### Label

The label shown below is affixed on the rear side of the smoke detector. The label material is PVC with a permanent adhesive.



### Label location



Label with **FCC ID:KDYMGSMK2** and **IC:2438A-MGSMK2** will be located at the rear side panel. The statement according to FCC part 15 §15.19(a)(3) is placed in User Manual, page 4 (Application exhibit User\_manual\_25764).