



SINGLE-STATION PHOTOELECTRIC SMOKE DETECTOR SD-738/w USER'S MANUAL

TABLE OF CONTENTS

INTRODUCTION 1

LOCATIONS TO INSTALL YOUR SMOKE DETECTOR 1

LOCATIONS NOT TO INSTALL YOUR SMOKE DETECTORS 2

INSTALLING YOUR SMOKE DETECTOR 2

TESTING YOUR SMOKE DETECTOR 3

TAKING CARE OF YOUR SMOKE DETECTOR 3

TIPS TO ENHANCE YOUR PROTECTION FROM FIRES .. 3

MORE TIPS TO FACE A FIRE IN YOUR HOME 3

SPECIFICATIONS 4

SMOKE DETECTOR WITH OPTIONAL WIRELESS TRANSMITTER INFORMATION 4

FIVE YEAR LIMITED WARRANTY 4

INTRODUCTION

Everday's single station photoelectric smoke detector is designed to sense smoke that comes into the detector chamber. It does not sense gas, heat, or flame. This smoke detector is designed to give early warning of developing fires by giving off the alarm sounds from its built-in alarm horn. It can provide precious time for you and your family to escape before a fire spreads. However, the smoke detector makes such pre-warning of fire accident possible, only if the detector is located, installed, and maintained properly as described in this User's Manual.

WARNING: This smoke detector is designed for use in a single residential unit only, which means that it should be used inside a single-family home or apartment. It is not meant to be used in lobbies, hallways, basements, or another apartment in multi-family buildings, unless there are already working detectors in each family unit. Smoke detectors, placed in common areas outside of the individual living unit, such as on porches or in hallways, may not provide early warning to residents. In multi-family buildings, each family living unit should set up its own detectors.

WARNING: This detector is not meant to be used in non-residential buildings. Warehouses, industrial or commercial buildings, and special purpose non-residential buildings require special fire detection and alarm systems. This detector alone is not a suitable substitute for complete fire detection systems for places where many people live or work, such as hotels or motels. The same is true of dormitories, hospitals, nursing homes or group homes of any kind, even if they were once single-family homes. Please refer NFPA 101, the Life Safety Code, NFPA71, 72A, 72B, 72C, 72D, and 72E for smoke detector requirements for fire protection in buildings not defined as "households".

WARNING: This detector will not alert people who are hard of hearing. It is strongly recommended that the special-purpose smoke detectors, using lights or vibrating devices, should be installed to alert occupants who are hard of hearing.

LOCATIONS TO INSTALL YOUR SMOKE DETECTOR

Smoke detectors should be installed in accordance with the NFPA Standard 74 (National Fire Protection Association, Batterymarch Park, Quincy, MA 02169). For complete coverage in residential units, smoke detectors should be installed in all rooms, halls, storage areas, basements, and attics in each family living unit. Minimum coverage is one detector on each floor and one in each sleeping area. Here, we have good tips for you:

- Install a smoke detector in the hallway outside every separate bedroom area, as shown in Figure 1. Two detectors are required in homes with two bedroom areas, as shown in Figure 2.
- Install a smoke detector on every floor of a multi-floor home or apartment, as shown in Figure 3.
- Install a minimum of two detectors in any household.
- Install a smoke detector inside every bedroom.
- Install smoke detectors at both ends of a bedroom hallway if the hallway is more than 40 feet (12 meters) long.
- Install a smoke detector inside every room where one sleeps with the door partly or completely closed, since smoke could be blocked by the closed door and a hallway alarm may not wake up the sleeper if the door is closed.

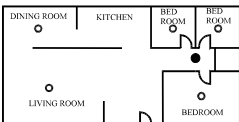


Figure 1: LOCATIONS FOR PLACING SMOKE DETECTORS FOR SINGLE RESIDENCE WITH ONLY ONE SLEEPING AREA

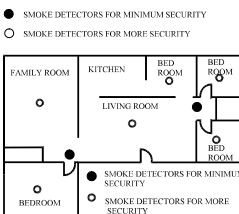


Figure 2: LOCATIONS FOR PLACING SMOKE DETECTORS FOR SINGLE-FLOOR RESIDENCE WITH MORE THAN ONE SLEEPING AREA

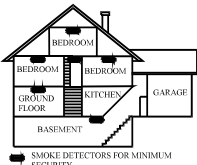


Figure 3: LOCATION FOR PLACING SMOKE DETECTORS FOR A MULTI-FLOOR RESIDENCE

- Install basement detectors at the bottom of the basement stairwell.
- Install second-floor detectors at the top of the first-to-second floor stairwell.
- Be sure no door or other obstruction blocks the path of smoke to the detector.
- Install additional detectors in your living room, dining room, family room, attic, utility and storage rooms.
- Install smoke detectors as close to the center of the ceiling as possible. If this is not practical, put the detector on the ceiling, no closer than 4 inches (10 cm) from any wall or corner, as shown in Figure 4.
- If ceiling mounting is not possible and wall mounting is permitted by your local and state codes, put wall-mounted detectors between 4 and 6 inches (10 ~ 15 cm) from the ceiling, also see Figure 4.

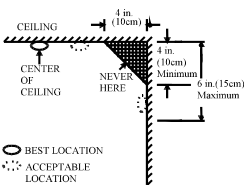


Figure 4: RECOMMENDED BEST AND ACCEPTABLE LOCATIONS TO MOUNT

SMOKE DETECTORS

- If some of your rooms have sloped, peaked, or gabled ceilings, try to mount detectors 3 feet (0.9 meter) measured horizontally from the highest point of the ceiling as shown in Figure 5.

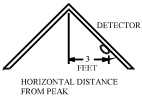


Figure 5: RECOMMENDED LOCATION TO MOUNT SMOKE DETECTORS IN ROOMS WITH SLOPED, GABLED, OR PEAKED CEILING

CAUTION (As required by the California State Fire Marshall)

"Early warning fire detection is best achieved by the installation of fire detection equipment in all rooms and areas of the household as follows: (1) A smoke detector installed in each separate sleeping area (in the vicinity, but outside of the bedrooms), and (2) Heat or smoke detectors in the living rooms, dining rooms, bedrooms, kitchens, hallways, attics, furnace rooms, closets, utility and, storage rooms, basements and attached garages."

For your information, NFPA Standard 74, Section 2-4 reads as follows:

"2-4.1.1 Smoke detectors shall be installed outside of each separate sleeping area in the immediate vicinity of the bedrooms and on each additional story of the family living unit including basements and excluding crawl spaces and unfinished attics.

The provisions of 2-4.1.1 represent the minimum number of detectors required by this standard. It is recommended that the householder consider the use of additional smoke detectors for increased protection for those areas separated by a door from the areas protected by the required smoke detectors under 2-4.1.1 above. The recommended additional areas are living room, dining room, bedroom(s), kitchen, attic (finished or unfinished), furnace room, utility room, basement, integral or attached garage, and hallways not included in 2-4.1.1 above. However, the use of additional detectors remains the option of the householder." We recommend complete coverage and use of additional smoke detectors.

LOCATIONS NOT TO INSTALL YOUR SMOKE DETECTORS

Nuisance alarms take place when smoke detectors are installed where they will not work properly. To avoid nuisance alarms, do not install smoke detectors in the following situations:

- Combustion particles are the by-products of something that is burning. Thus, in or near areas where combustion particles are present you do not install the smoke detectors to avoid nuisance alarms, such as kitchens with few windows or poor ventilation, garages where there may be vehicle exhaust, near furnaces, hot water heaters, and space heaters.
- Do not install smoke detectors less than 20 feet (6 meters) away from places where combustion particles are normally present, like kitchens. If a 20-foot distance is not possible, e.g. in a mobile home, try to install the detector as far away from the combustion particles as possible, preferably on the wall. To prevent nuisance alarm alarms, provide good ventilation in such places.
- **IMPORTANT:** For any reason, do not disable the detector to avoid nuisance alarms.
- When air streams passing by kitchens, the way how a detector can sense combustion particles in normal air-flow paths is graphically shown in Figure 6, which indicates the correct and incorrect smoke detector locations concerning this problem.

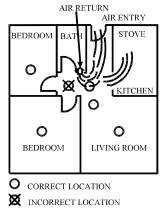


Figure 6: RECOMMENDED SMOKE DETECTOR LOCATIONS TO AVOID AIR STREAMS WITH COMBUSTION PARTICLES

- In damp or very humid areas, or near bathrooms with showers. Moisture in humid air can enter the sensing chamber, then turns into droplets upon cooling, which can cause nuisance alarms. Install smoke detectors at least 10 feet (3 meters) away from bathrooms.
- In very cold or very hot areas, including unheated buildings or outdoor rooms. If the temperature goes above or below the operating range of smoke detector, it will not work properly. The temperature range for

your smoke detector is 40°F to 100°F (4°C to 38°C).

- In very dusty or dirty areas, dirt and dust can build up on the detector's sensing chamber, to make it overly sensitive. Additionally, dust or dirt can block openings to the sensing chamber and keep the detector from sensing smoke.
- Near fresh air vents or very drafty areas like air conditioners, heaters or fans, fresh air vents and drafts can drive smoke away from smoke detectors.
- Dead air spaces are often at the top of a peaked roof, or in the corners between ceilings and walls. Dead air may prevent smoke from reaching a detector. See Figures 4 and 5 for recommended mounting locations.
- In insect-infested areas. If insects enter a detector's sensing chamber, they may cause a nuisance alarm. Where bugs are a problem, get rid of them before putting up a detector.
- Near fluorescent lights, electrical "noise" from fluorescent lights may cause nuisance alarms. Install smoke detectors at least 5 feet (1.5 meters) from such lights.

WARNING: Never remove power from a DC-power operated detector to stop a nuisance alarm. Open a window or fan the air around the detector to get rid of the smoke. The alarm will turn itself off when the smoke is gone. If nuisance alarms persist, attempt to clean the detector as described in this User's Manual.

WARNING: Do not stand close to the detector when the alarm is sounding. The alarm is loud in order to wake you in an emergency. Too much exposure to the horn at close range may be harmful to your hearing.

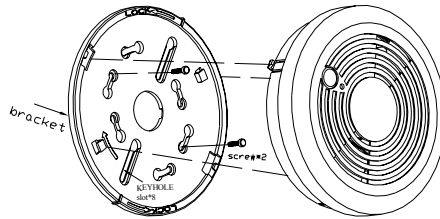
INSTALLING YOUR SMOKE DETECTOR

This smoke detector is made to be mounted on the ceiling or on the wall if necessary. Since this smoke detector is a single-station type, it cannot be linked to other detectors.

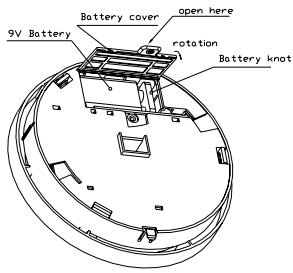
WARNING: Do not connect this smoke detector to any other alarm or auxiliary device. Connecting anything else to this detector will keep it from working properly.

Read "LOCATIONS TO INSTALL YOUR SMOKE DETECTORS" and "LOCATIONS NOT TO INSTALL YOUR SMOKE DETECTORS" section in this Manual first, and then decide where to install a detector. Please follow these steps to install your smoke detector:

1. At the place where you are going to install the detector, draw a horizontal line six inches long.
2. Remove the mounting bracket from your unit by rotating it counterclockwise.
3. Place the bracket so that the two longest slots are aligned on the line. In each of keyhole slots, draw a mark to locate a mounting plug and screw.
4. Remove the bracket.
5. Using a 3/16-inch (5mm) drill bit, drill two holes at the marks and insert plastic wall plugs. Put the detector away from getting plaster dust on it when you drill holes for mounting.
6. Using the two screws and plastic wall plugs (all supplied), attach the bracket to the wall.
7. Line up the side slot of the bracket and the detector. Push the detector onto the mounting bracket and turn it anti-clockwise to fix it into place. Pull outward on the detector to make sure it is securely attached to the mounting bracket.



8. The steps to open the detector cover and to install the battery are listed as follows:



- (1). To power Smoke detector requires an alkaline battery.
- (2). Match terminals on the end(s) of the battery with opposite terminal connections on the detector. Be sure to insert the alkaline battery in the position shown on the detector.
- (3). When terminals are properly matched, push battery firmly in until it snaps and cannot be shaken loose.

9. When the detector power first makes contact with the detector, the alarm horn may sound for one second. This means normal and indicates that the power is positioned properly. Close cover, then press test button, holding it down for about 5 seconds until the horn sounds. The horn should sound a loud, pulsating alarm. This means the unit is working properly.

TESTING YOUR SMOKE DETECTOR

Test the detector weekly by pushing firmly on the test button with your finger until the horn sounds. Testing method may take up to 20 seconds to sound the alarm horn. These are only ways to be sure that detector is working correctly. If the detector fails to test properly, have it repaired or replaced immediately. If you suspect that your detector does not go into alarm, test it by pressing the test button with your finger to ensure if it works properly.

WARNING: Never use an open flame of any kind to test your detector. You may set fire to damage the detector, as well as your home. The built-in test switch accurately tests all detector functions, as required by Underwriters' Laboratories. They are the only correct ways to test the unit.

WARNING: When you are not testing the unit and the alarm horn sounds a loud continuous sound, this means the detector has sensed smoke or combustion particles in the air. Be sure that the alarm horn is a warning of a possible serious situation, which requires your immediate attention.

- The alarm could be caused by a nuisance situation. Cooking smoke or a dusty furnace, sometimes called "friendly fires," can cause the alarm to sound. If this happens, open a window or fan the air to remove the smoke or dust. The alarm will turn off as soon as the air is completely clear.
- **NOTE:** Do not disconnect the power from the detector. This will remove your protection from fires.
- If the alarm horn begins to beep once a minute, this signal means that the detector's power is weak. Recheck the DC power. Keep proper DC power on hand for this purpose.

TAKING CARE OF YOUR SMOKE DETECTOR

Your smoke detector is designed to be maintenance-free as possible. To keep your detector in good working order, you must test the detector weekly, as referring to section "TESTING YOUR SMOKE DETECTOR".

- Recheck the DC power when the low battery "beep" signal sounds once minute.
- Open the cover and vacuum the dust off the detector's sensing chamber at least once a year. Disconnect DC power before cleaning. To clean detector, use soft brush attachment to your vacuum. Carefully remove any dust on detector components, especially on the openings of the sensing chamber. Reconnect DC power after cleaning. Test detector to make sure DC power is in correctly. Check to make sure there are no obstructions inside the test button. If there is any dust in the test button, insert a toothpick from the back to the front.
- **NOTE:** If nuisance alarms keep coming from the detector, you should check whether the detector's location is adequate. Refer to section "WHERE TO INSTALL SMOKE DETECTORS." Move your detector if it is not located properly. Clean detector as described above.
- Clean detector cover when it gets dirty. First open cover and disconnect DC power. Hand-wash the cover with cloth dampened with clean water. Dry it with lint-free cloth. Do not get any water on the detector components. Reconnect the DC power, and close cover. Test detector to make sure that DC power works correctly.

TIPS TO ENHANCE YOUR PROTECTION FROM FIRES

Putting up smoke detectors is only one step in protecting your family from

fires. You must also reduce the chances that fires will start in your home. And you must increase your chances of escaping safely if one does start. To have a good fire safety program you must apply the following tips to enhance your family's protection from fires:

1. Install smoke detectors properly. Carefully follow all the instructions in this manual. Keep your smoke detectors clean, and test them every week.
2. Remember that detectors that do not work will not alert you. Replace your smoke detectors immediately if they are not working properly.
3. Follow fire safety rules, and prevent hazardous situations:
 - Use smoking materials properly. Never smoke in bed.
 - Keep matches and cigarette lighters away from children.
 - Store flammable materials in proper containers. Never use them near open flame or sparks.
 - Keep electrical appliances in good condition. Do not overload electrical circuits.
 - Keep stoves, fireplaces, chimneys, and barbecue grills grease free. Make sure they are properly installed and away from any combustible materials.
 - Keep portable heaters and open flames such as candles away from combustible materials.
 - Do not allow rubbish to accumulate.
 - Keep a supply of extra batteries on hand for your battery powered smoke detectors.
4. Develop a family escape plan and practice it with your entire family. Be sure to include small children in your practice.
 - Draw a floor plan of your home, and find two ways to exit from each room. There should be one way to get out of each bedroom without opening the door.
 - Explain to children what the smoke detector alarm signal means. Teach them that they must be prepared to leave the home by themselves if necessary. Show them how to check to see if doors are hot before opening them. Show them how to stay close to the floor and crawl if necessary. Show them how to use the alternate exit if the door is hot and should not be opened.
 - Decide on a meeting place that has a safe distance from your house. Make sure that all your children understand that they should go and wait for you there if there is a fire.
 - Hold fire drills at least every 6 months to make sure that everyone, even small children, knows what to do to escape safely.
 - Know where to go to call the Fire Department from outside your home.
 - Provide emergency equipment, such as fire extinguishers, and teach your family to use this equipment properly.

MORE TIPS TO FACE A FIRE IN YOUR HOME

If you have made a family escape plan and practiced it with your family, you have increased their chances of escaping safely. Go over the following tips with your children each time you have fire drills. This will help everyone remember these tips in case of a real fire emergency.

1. Don't panic and stay calm. Your safe escape may depend on thinking clearly and remembering what you have practiced.
2. Get out of the house as quickly as possible. Follow a planned escape route. Do not stop to collect anything or to get dressed.
3. Feel the doors to see if they are hot. If they are not, open them carefully. Do not open a door if it is hot. Use an alternate escape route.
4. Stay close to the floor. Smoke and hot gases rise.
5. Cover your nose and mouth with a wet or damp cloth. Take short, shallow breaths.
6. Keep doors and windows closed. Open them only if you have to escape.
7. Meet at your planned meeting place after leaving the house.
8. Call the Fire Department as soon as possible from outside your house. Give the address and your name.
9. Never go back inside a burning building. Contact your local Fire Department. They will give you more ideas about how to make your home safer from fires and how to plan your family's escape.

SPECIFICATIONS

Detector Type

Single Station Smoke Detector

Power	9VDC
Sensitivity	2.35 ±0.85%/ft.
Operating Temperature Range	32°F to 100°F (0°C to 38°C)
Alarm Sound Level	85dB at 10 feet
Indicator Light	Red LED flashes once every 45 seconds
Low Battery Life	Up to 30 days
Radio Frequency ^{††}	433MHz or 868MHz
Wireless Range [†]	35m (115ft)
Sounder Alarm Pattern; UL, EU	Evacuation Temporal Pattern
Sounder Alarm Pattern; ULC	Continuous Beeps
Relative Humidity	10% to 85%
Dimensions	6" (153 mm) by 1.57" (40 mm)

[†]433MHz only for c(UL)us listed products.

^{††}Typical range in a residential environment.

SMOKE DETECTOR WITH OPTIONAL WIRELESS TRANSMITTER INFORMATION

Wireless Installation Location

The location of the wireless smoke detector affects the overall performance of the wireless system. In order to ensure the best possible signal reception, the following criteria should be respected whenever possible:

- Select an installation site that is free of obstacles that reflect and absorb radio frequency (RF) signals, as well as interference that may distort signals. Avoid installation near or in the path of strong RF fields (i.e. neon lights, computers), and on or near metal objects, circuit breaker boxes, air conditioners, and heater ducts since they may cause interference and reduce the module's sensitivity
- Select a site that is not susceptible to drastic temperature changes
- Respect the maximum allowable distance between the smoke detector and the wireless receiver

WARNING: Do not cut, bend, or alter the antenna. Ensure that the electrical wires do not cross over the antenna when connected.

Smoke Detector Zone Assignment

When assigning the smoke detector to a wireless receiver and you are prompted to open and close the module's cover (press anti-tamper switch), press the smoke detector's Test button to assign it to the receiver.

Check-In Supervision

The MG-SMK1 transmits a check-in supervision signal to the receiver at regular intervals. This value is pre-determined and cannot be programmed.

Alarm Transmission

Upon detection of an alarm condition (smoke) the detector will transmit an alarm signal every 30 seconds to the wireless receiver until the condition stops. Once the alarm condition has stopped, the detector will wait 5 seconds then transmit a restore signal to the wireless receiver. The restore signal is transmitted only once to the receiver after an alarm condition has stopped.

Low Battery

If the smoke detector experiences a low battery condition, it will wait 5 minutes and then transmit a low battery signal to the receiver. The smoke detector will continue to transmit a low battery signal every 12 hours until the battery is replaced.

Replacing the Battery

After replacing the battery, test the detector to ensure proper functioning (refer to Testing the Smoke Detector).

Testing the Smoke Detector

It is strongly recommended to test the smoke detector a minimum of once every month. When the Test button is pressed, the smoke detector sends an alarm signal to the wireless receiver. If the smoke detector zone is defined as a **Delayed 24hr Fire Zone**, the alarm signal is not sent to the central monitoring station. If the smoke detector zone is defined as an **Instant 24hr Fire Zone**, the alarm signal is immediately sent to the central monitoring station. In this case, contact the central monitoring station before they are somewhat better at detecting fast flaming fires than slow-smoldering fires. Photoelectric detectors sense smoldering fires

performing the test to avoid a false alarm. Refer to the security system manual for more information on testing the security system.

To test the smoke detector:

1. If the smoke detector zone is an **Instant 24hr Fire Zone**, contact the Central Monitoring Station to advise them of the test.
2. Press and hold the Test button for approximately 3 seconds until the buzzer activates.
3. If the zone is a **Delayed Fire Zone**, the alarm will stop automatically. If the zone is an **Instant Fire Zone**, enter a valid code # (PIN) to stop the alarm.

Product compatibility:

- Sub-assembly part# MG-SMK1 is compatible with Magellan models 6010, 6060 in 433MHz frequency range.
- Sub-assembly part# MG-SMK186 is compatible with Magellan models 6010, 6060 in 868MHz frequency range.

WARNING: This device is only approved to function with Magellan 6060 or 6010.

WARNING: This device is not intended as life-saving device and should not be connected with any life saving device or fire system. This device is only intended to be used in residences.

WARNING: If the smoke detector does not emit an alarm, connect or replace the battery and then re-test the detector. If the smoke detector still does not respond, contact your distributor.

WARNING: LIMITATIONS OF SMOKE DETECTORS/TRANSMITTERS

This smoke detector is designed to **activate and initiate** emergency action, but will **only** do so when used in conjunction with an authorized fire alarm system. This detector must be installed in accordance with NFPA standard 72.

Deleted: only

Smoke detectors will not work without power. AC or DC powered smoke detectors will not work if **for any reason**, the power supply is cut off. **An** alarm signal sent by the wireless transmitter in this detector may be blocked or reflected by metal before reaching the alarm receiver. Even if the signal path has been recently checked, blockage **may** occur if a metal object is moved into the path.

Deleted: for any reason

Deleted: A

Deleted: can

Smoke detectors will not sense fires when smoke does not reach the detectors. Smoldering fires typically do not generate a **large amount** of heat, which is needed to drive smoke up to the ceiling where the smoke detector is usually located. For this reason, there may be large delays in detecting a smoldering fire with either an ionization-type detector or a photoelectric-type detector. Either one of them may only generate an alarm after flaming has initiated, which will generate the heat needed to drive the smoke to the ceiling.

Deleted: which start where

Deleted: lot of

Smoke from fires in chimneys, in walks, on roofs, or on the other side of a closed door may not reach the smoke detector and generate an alarm. A detector may not quickly detect or sense at all, a fire developing on another level of a building. Alarm warning devices, such as bells or horns, may not alert people or wake up sleepers if they are located on the other side of closed or partly open doors, or on another level. Persons may not hear a warning device over the noise levels of a radio, air conditioner or appliances or traffic. For this reason, **detectors are strongly recommended to be located on every level and in every bedroom within a building.** Alarm warning devices, however loud, may not warn hearing-impaired people or waken deep sleepers.

Smoke detectors shall be located in any room where an alarm control is located, or in any room where alarm control connections to an AC source or phone lines are made. If detectors are not so located, a fire within any of these rooms could prevent the QED control from reporting a fire.

Sensing limitations of smoke detectors. Ionization detectors and photoelectric detectors are required to pass fire tests of the flaming and smoldering types. This is to ensure that both can detect a wide range of fires. Ionization detectors offer a broad range of fire-sensing capability, but

Deleted: S

Deleted: have sensing limitations, too

better than flaming fires, which have little, if any, visible smoke. Because fires develop in different ways, and are often unpredictable in their growth,

neither type of detector is necessarily the best, and a given detector may not always provide early warning of a specific type of fire.

In general, detectors cannot be expected to provide warning for fires resulting from inadequate fire protection practices, violent explosions, escaping gases that ignite, improper storage of flammable liquids like cleaning solvents that ignite, other similar safety hazards, arson, smoking in bed, children playing with matches or lighters, etc. Smoke detectors used in high air velocity conditions may have a delay in alarm due to dilution of smoke densities created by frequent and rapid air exchanges. Additionally, high air velocity environments may create increased dust contamination, demanding more frequent detector maintenance.

~~Maintenance of smoke detectors must be done.~~ To keep your equipment in excellent working order, ongoing ~~monthly~~ maintenance is required ~~as outlined above~~ and ~~as per~~ UL and NFPA standards. At a minimum, the requirements of Chapter 7 of NFPA 72, the National Fire Alarm Code, shall be followed. A preventative maintenance agreement should be arranged through the local manufacturer's representative. Though smoke detectors are designed for long life, they may fail at any time. Any smoke detector, fire alarm equipment, or any component of that system which fails ~~must be repaired or replaced as soon as possible.~~

INFORMATION TO USER

This device complies with Part 15 of the FCC Rules. Operation is subject to the following two conditions: (1) This device may not cause harmful interference, and (2) This device must accept any interference received, including interference that may cause undesired operation.

This equipment has been tested and found to comply with the limits for Class B Digital Device, pursuant to Part 15 of the FCC Rules. These limits are designed to provide reasonable protection against harmful interference in a residential installation. This equipment generates and can radiate radio frequency energy and, if not installed and used in accordance with the instructions, may cause harmful interference to radio communications. However, there is no guarantee that interference will not occur in a particular installation. If this equipment does cause harmful interference to radio or television reception, which can be determined by turning the equipment off and on, the user is encouraged to try to correct the interference by one or more of the following measures.

- Reorient or relocate the receiving antenna
- Increase the separation between the equipment and receiver
- Connect the equipment into an outlet on a circuit different from that to which the receiver is connected
- Consult the dealer or an experienced radio/TV technician for help

Any changes or modifications not expressly approved by the party responsible for compliance could void the user's authority to operate the equipment.

The users manual or instruction manual for an intentional or unintentional radiator shall caution the user that changes or modifications not expressly approved by the party responsible for compliance could void the user's authority to operate the equipment.

EVERDAY ONE-YEAR LIMITED WARRANTY

Everday Technology Co. ("Seller"), # 8 Lane 492, Ba-Der St., Shulin 238, Taipei Hsien, Taiwan, warrants its smoke detectors (the "product") to be free from defects in materials and workmanship for one year from date of original purchase, under normal use and service. Seller's obligation is limited to repairing or replacing, at its option, free of charge for parts, labour, or transportation, any part proven to be defective in materials or workmanship under normal use and service. Seller shall have no obligation under this warranty or otherwise if the product is altered or improperly repaired or serviced by anyone other than the Seller. In case of defect, contact the security professional who installed and maintains your security system or the Seller for product repair. ~~Returns may be sent to: Everday RMA Center at 1601 N.W. 84th Avenue, Miami, Florida, USA, 33126.~~ This one-year Limited Warranty is in lieu of all other express warranties, obligations, or liabilities. THERE ARE NO EXPRESS WARRANTIES WHICH EXTEND BEYOND THE FACE HEREOF. ALL IMPLIED WARRANTIES, OBLIGATIONS, OR LIABILITIES MADE BY SELLER IN CONNECTION WITH THIS PRODUCT, INCLUDING ANY IMPLIED WARRANTY OF

MERCHANTABILITY, OR FITNESS FOR A PARTICULAR PURPOSE OR OTHERWISE, ARE LIMITED IN DURATION TO A PERIOD OF ONE YEAR FROM THE DATE OF ORIGINAL PURCHASE. ANY ACTION OR BREACH OF ANY WARRANTY, INCLUDING BUT NOT LIMITED TO ANY IMPLIED WARRANTY OF MERCHANTABILITY, MUST BE BROUGHT WITHIN 18 MONTHS OF DATE OF ORIGINAL PURCHASE. IN NO CASE SHALL SELLER BE LIABLE TO ANYONE FOR ANY CONSEQUENTIAL OR INCIDENTAL DAMAGES OR FOR BREACH OF THIS OR ANY OTHER WARRANTY, EXPRESS OR IMPLIED, OR UPON ANY OTHER BASIS OF LIABILITY WHATSOEVER, EVEN IF THE LOSS OR DAMAGE IS CAUSED BY THE SELLER'S OWN NEGLIGENCE OR FAULT. Some states do not allow limitations on how long an implied warranty lasts or the exclusion of incidental or consequential damages, so the above limitation or exclusion may not apply to you.

~~Seller does not represent that the product may not be compromised or circumvented; that the product will prevent any personal injury or property loss by burglary, robbery, fire or otherwise; or that the product will in all cases provide adequate warning or protection. Buyer understands that a property installed and maintained alarm may only reduce the risk of a burglary, robbery, or fire occurring without providing an alarm, but is not any insurance or guarantee that such will not occur or that there will be no personal injury or property loss as a result. CONSEQUENTLY, SELLER SHALL HAVE NO LIABILITY FOR ANY PERSONAL INJURY, PROPERTY DAMAGE, OR OTHER LOSS BASED ON A CLAIM THAT THE PRODUCT FAILED TO GIVE WARNING. However, if Seller is held liable, whether directly or indirectly, for any loss or damage arising under this Limited Warranty or otherwise, regardless of cause or origin, Seller's maximum liability shall not in any case exceed the purchase price of the product, and such shall be the complete and exclusive remedy against Seller. This warranty gives you specific legal rights, and you may also have other rights, which vary from state to state. No increase or alteration, written or verbal, to this warranty is authorized.~~

ISSUE NO. SSDC738032004 REV.B

Formatted

Deleted: per the manufacturers recommendations

Deleted: shall

Formatted