

# MAGELLAN™

E018 433 MHz  
AUG 06

CH/123V

BATT

RED BLK

AC AC PGM PGM 1 2 BELL + AUX GRN YEL. Z1 C Z2

BATT STICKER

GND R-1 T-1 RING TIP

DF36049GHV  
HB/36049  
AC09695 0614

XTL103020B  
70.5367MHz  
SIWARD 6D

HASCO S0606R  
CAS112 DC12V  
DC12 2A 28VDC  
CHINA 0.5A 125VAC

www.paradox.com

PARADOX  
SERIES T Y SOY S T EP M S

Gnd

X

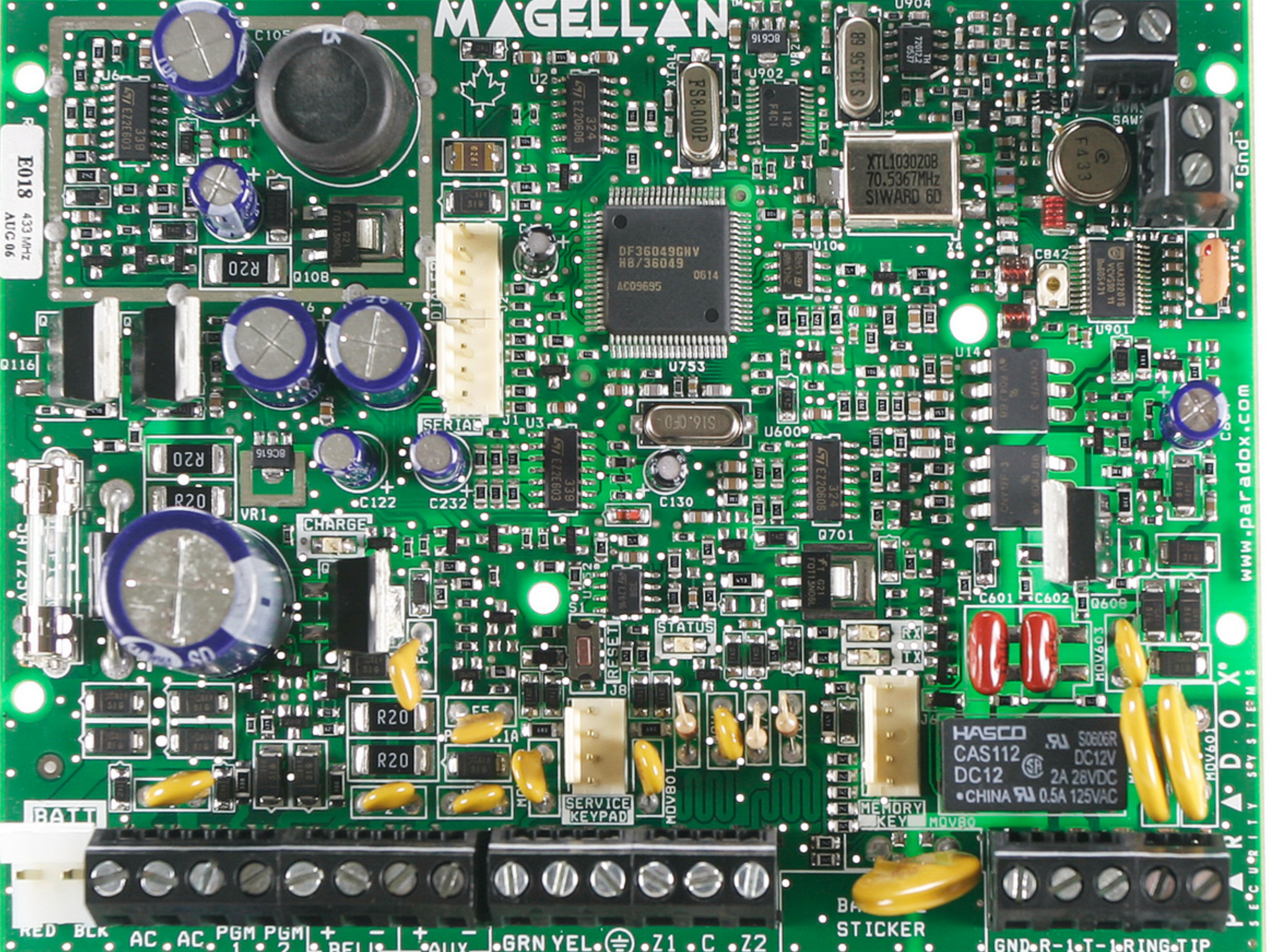
O

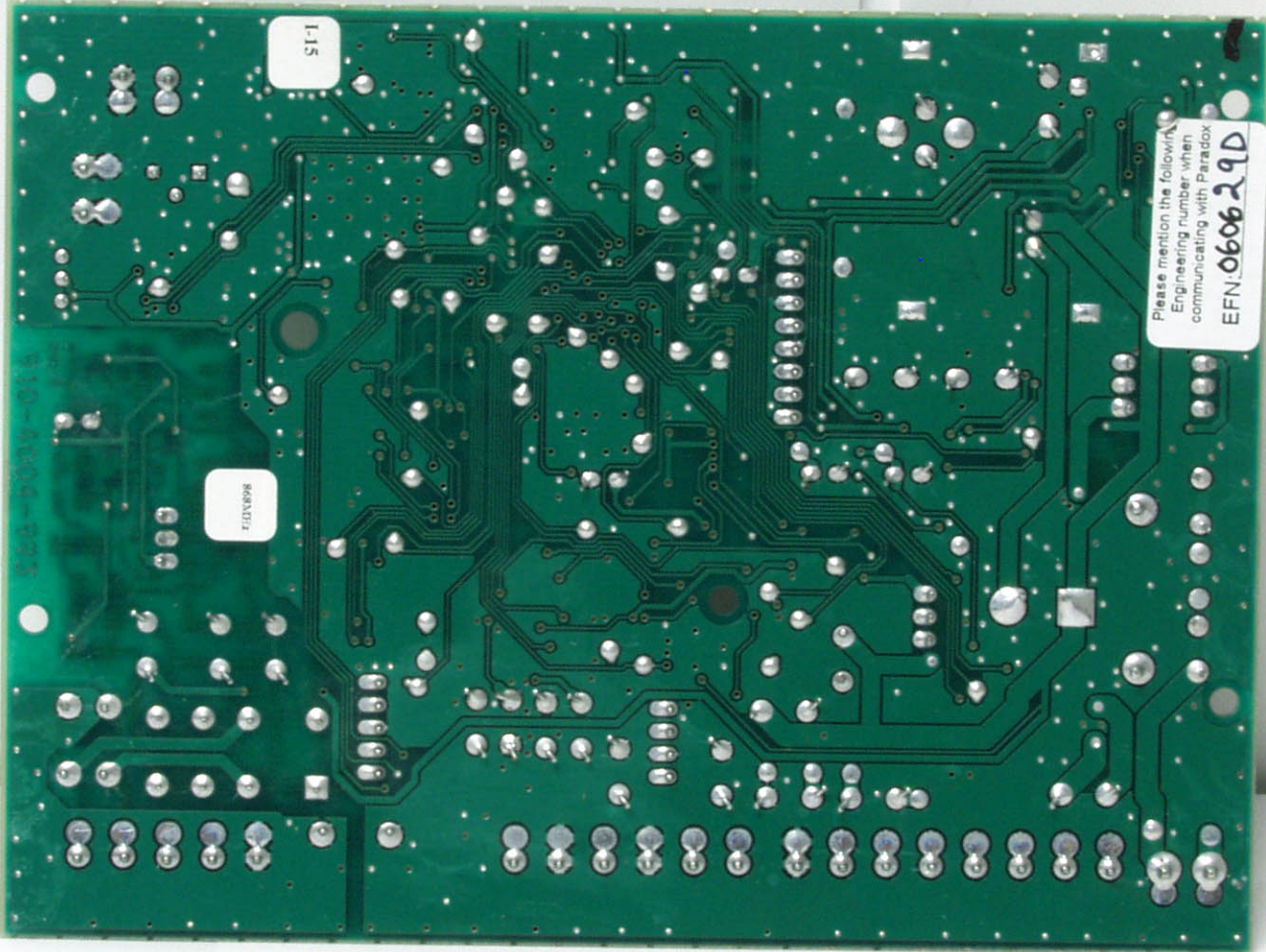
R

P

S

5





SI-1

8642172

Please mention the following  
Engineering number when  
communicating with Paradox  
EFN: 0606 29D

500-900V-01A