

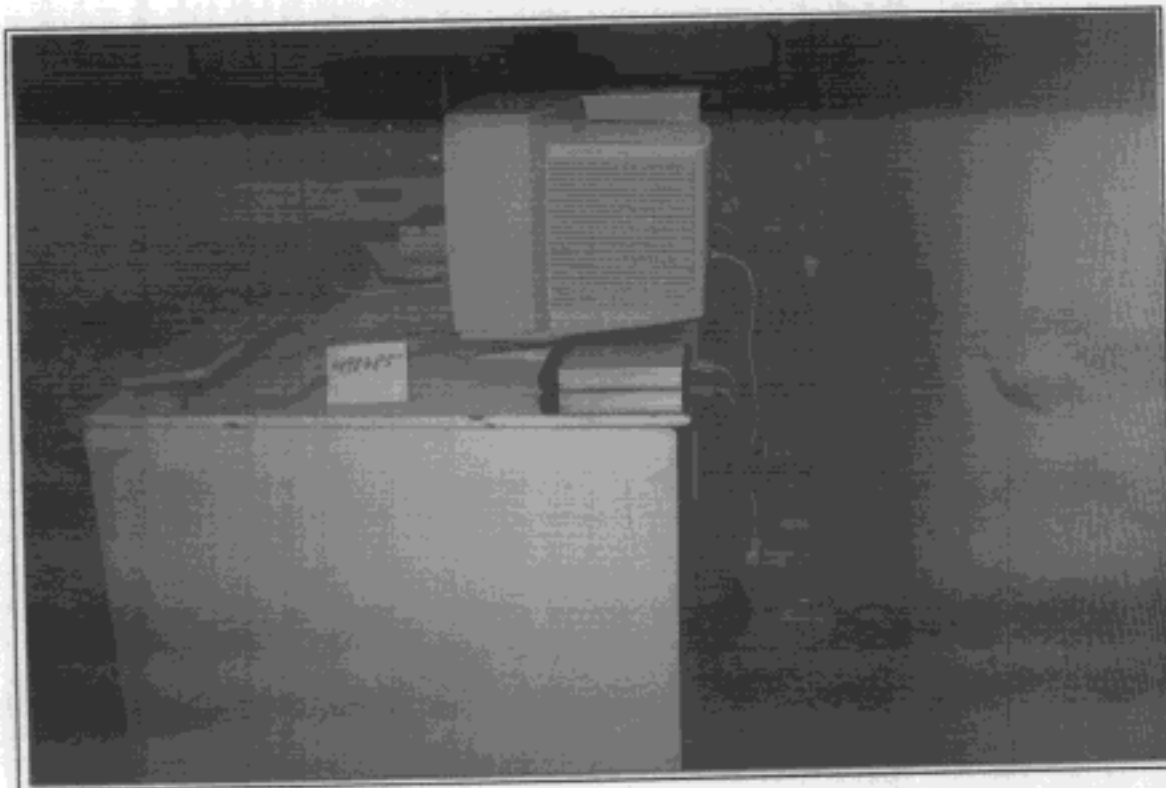
## 6. PHOTOGRAPHS

### 6.1. Photos of Powerline Conducted Measurement

Test Mode : 31.5KHz (640x480, 60Hz) w/ TV Out



FRONT VIEW OF CONDUCTED TEST

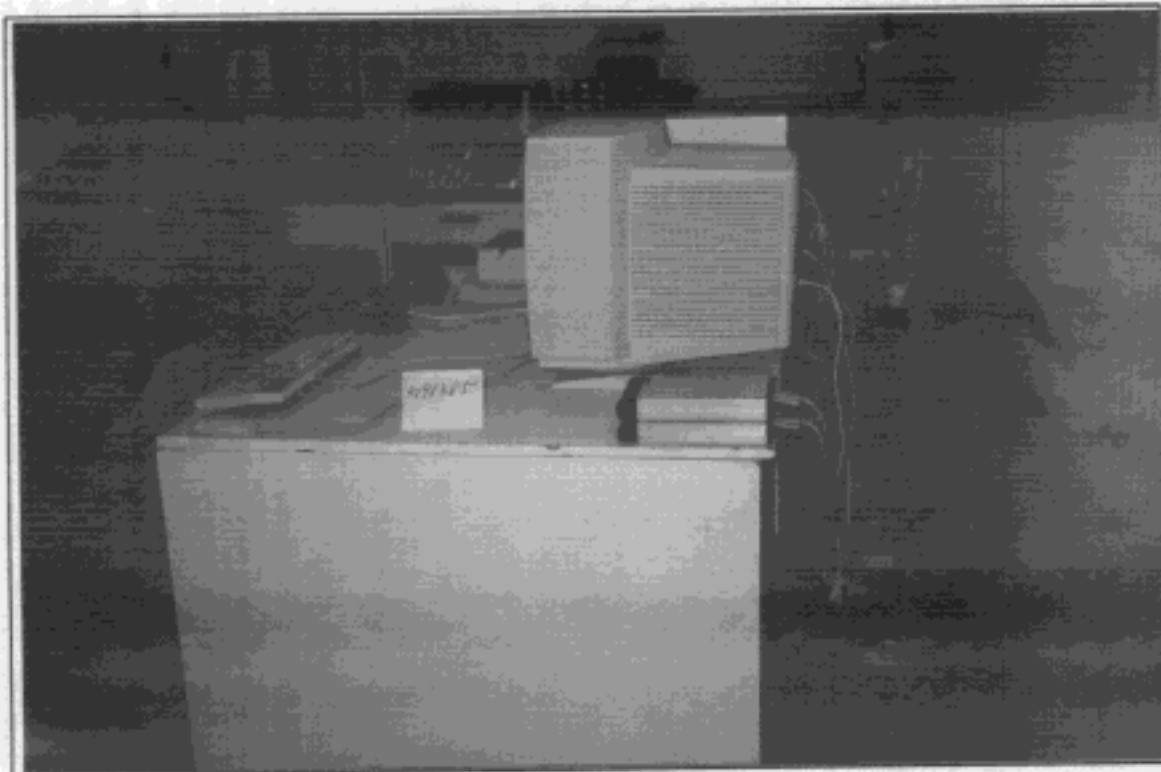


BACK VIEW OF CONDUCTED TEST

Test Mode : 93.8KHz (1600x1200, 75Hz)



FRONT VIEW OF CONDUCTED TEST

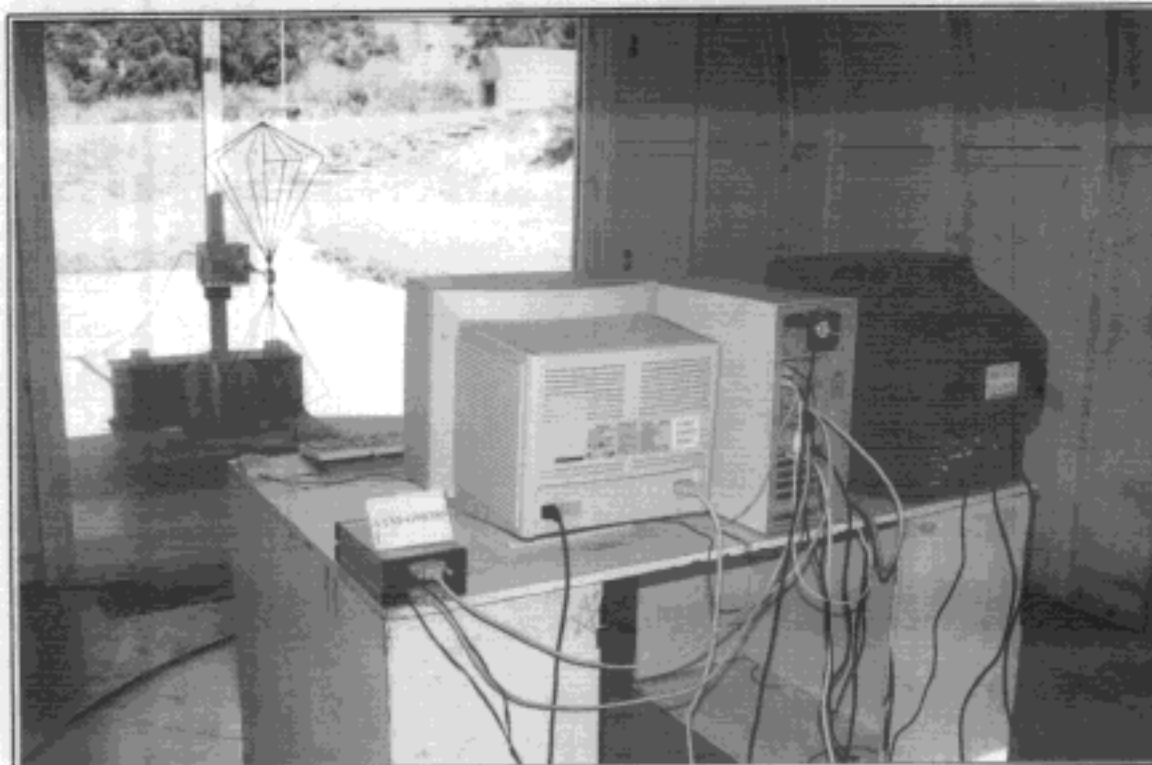


BACK VIEW OF CONDUCTED TEST

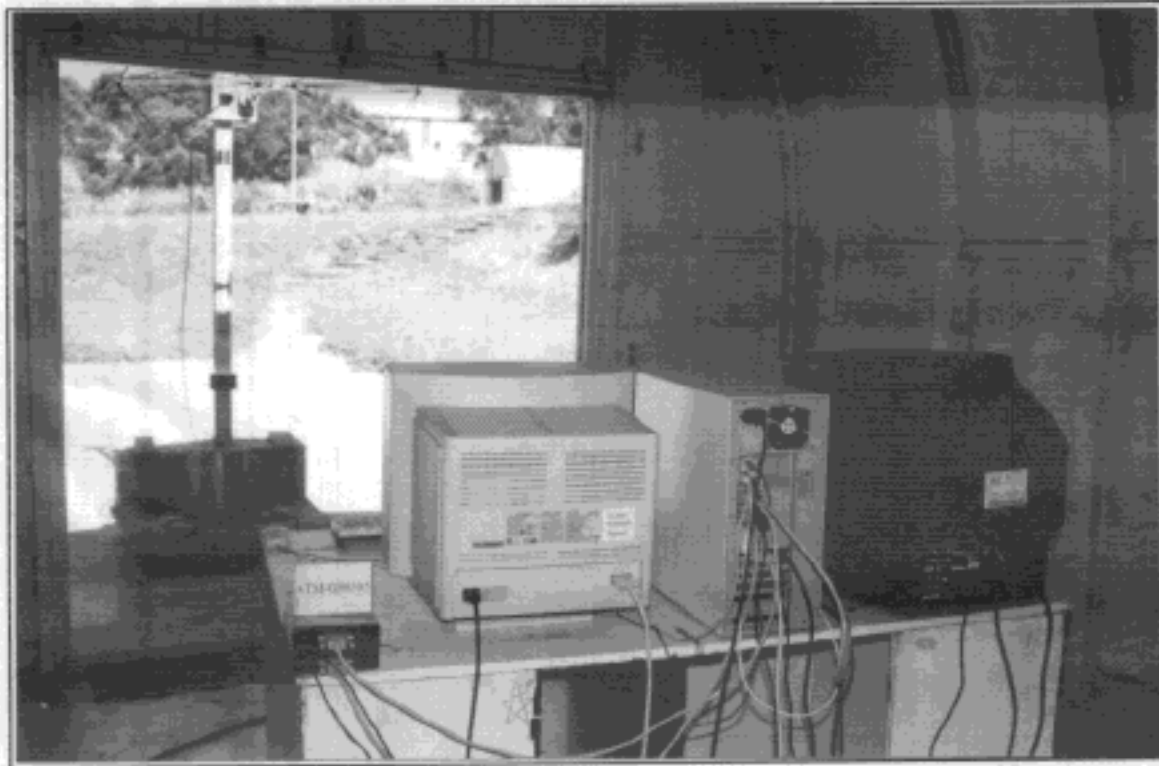
6.2. Photos of Radiated Measurement at Open Field Test Site  
Test Mode : 93.8KHz (1600x1200, 75Hz)



FRONT VIEW OF RADIATED TEST



BACK VIEW OF RADIATED TEST



SETUP WITH MAXIMUM DETECTED EMISSION AT HORIZONTAL POLARIZATION

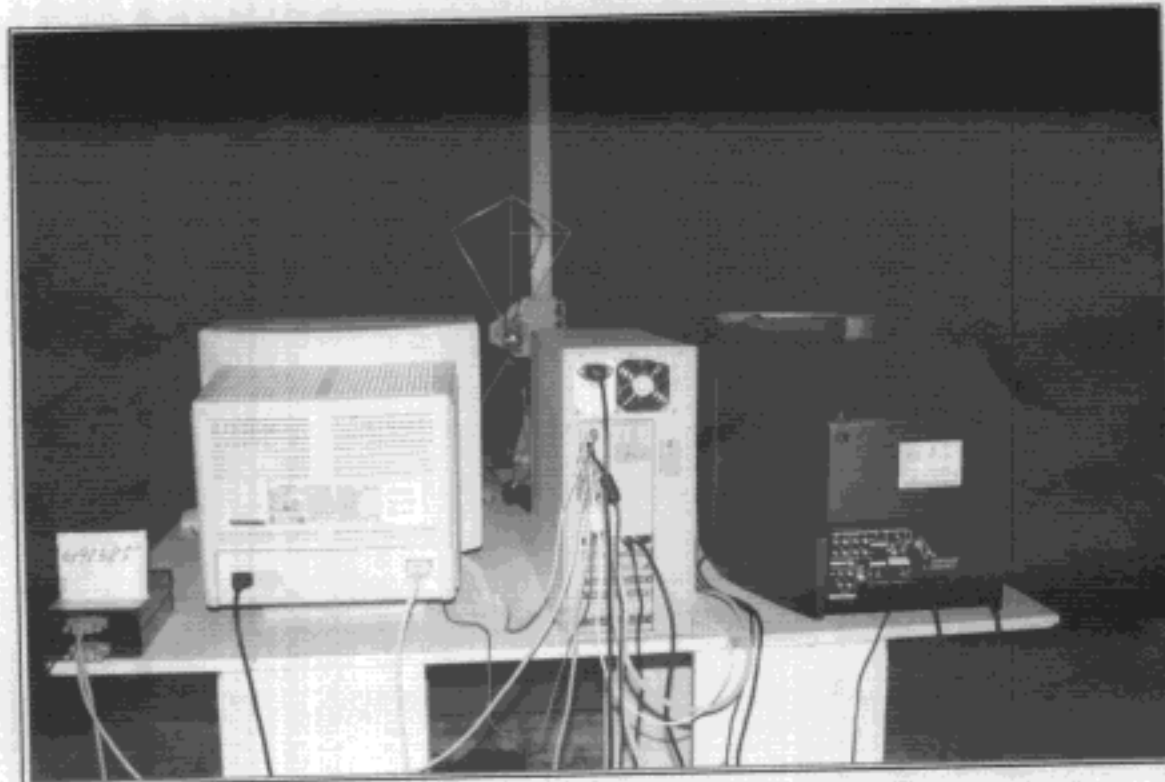


SETUP WITH MAXIMUM DETECTED EMISSION AT VERTICAL POLARIZATION

6.3. Photos of Radiated Measurement on Anechoic Chamber  
Test Mode : 31.5KHz (640x480, 60Hz) w/ TV Out



FRONT VIEW OF RADIATED TEST



BACK VIEW OF RADIATED TEST