

CA ASSY, GPS NINJA  
52-0314-001

GPS PCBA  
59-0478-001

Skycross WAN Antenna  
59-0479-001

CA ASSY, COAX,  
DEAC-WAN ANT  
52-0318-001

Diversity WLAN  
Ant

Main WLAN Ant

Coax soldered to  
antenna  
(Wistron NeWeb)

Coax soldered to  
antenna  
(Wistron NeWeb)

Optional:  
CA ASSY, COAX,  
CRMA-DIV ANT  
52-0316-001

DEAC PCBA  
59-0480-001

CA ASSY,  
COAX, U.F.L  
52-0236-016

WLAN Radio

CA ASSY,  
COAX, CRMA EXPR  
52-0319-001

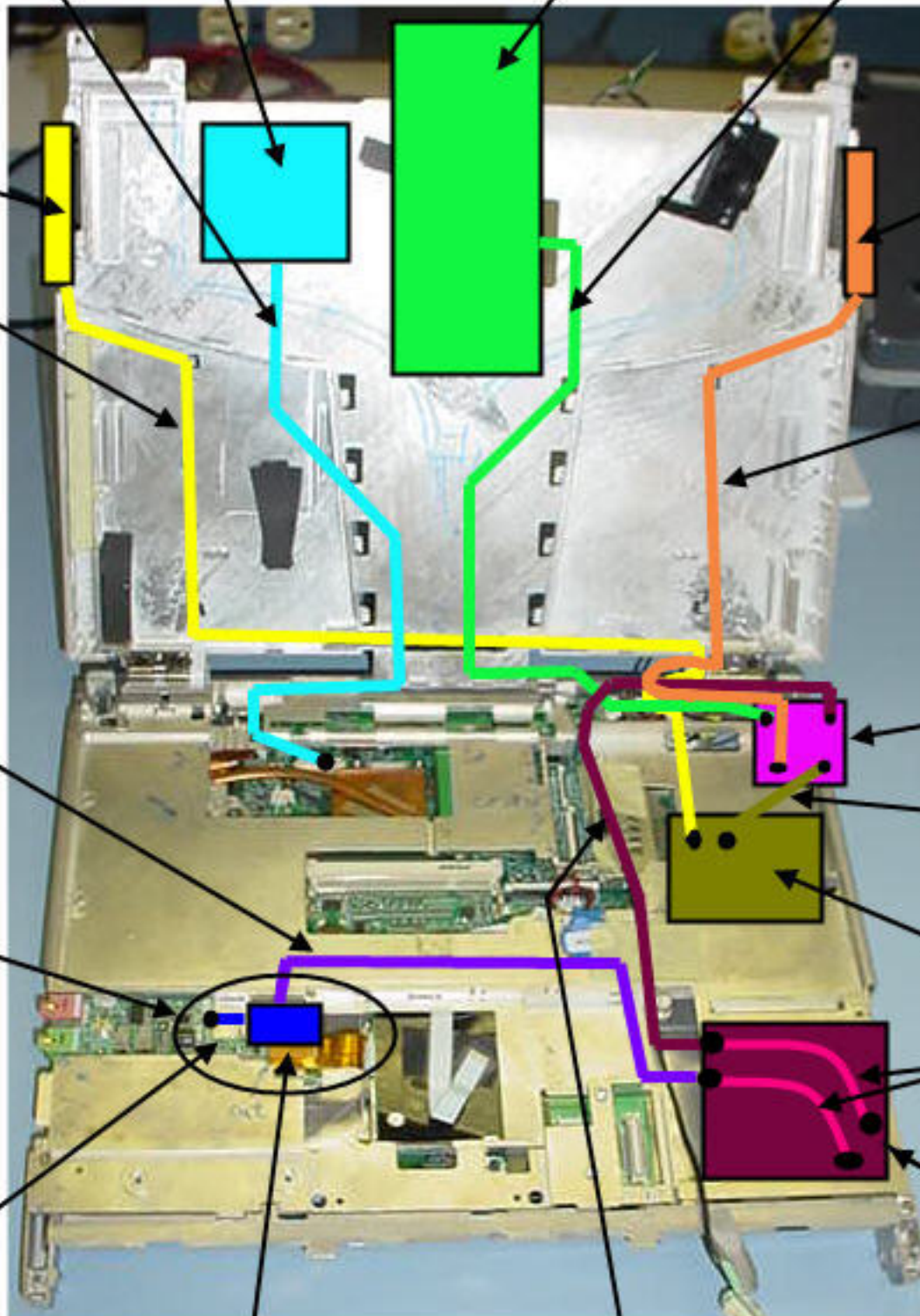
WAN radio  
(CRMA Express)

Optional location  
for WAN Diveristy  
Ant

Bluetooth radio  
with integrated Ant

CA ASSY, COAX, CRMA-DEAC  
52-0315-001

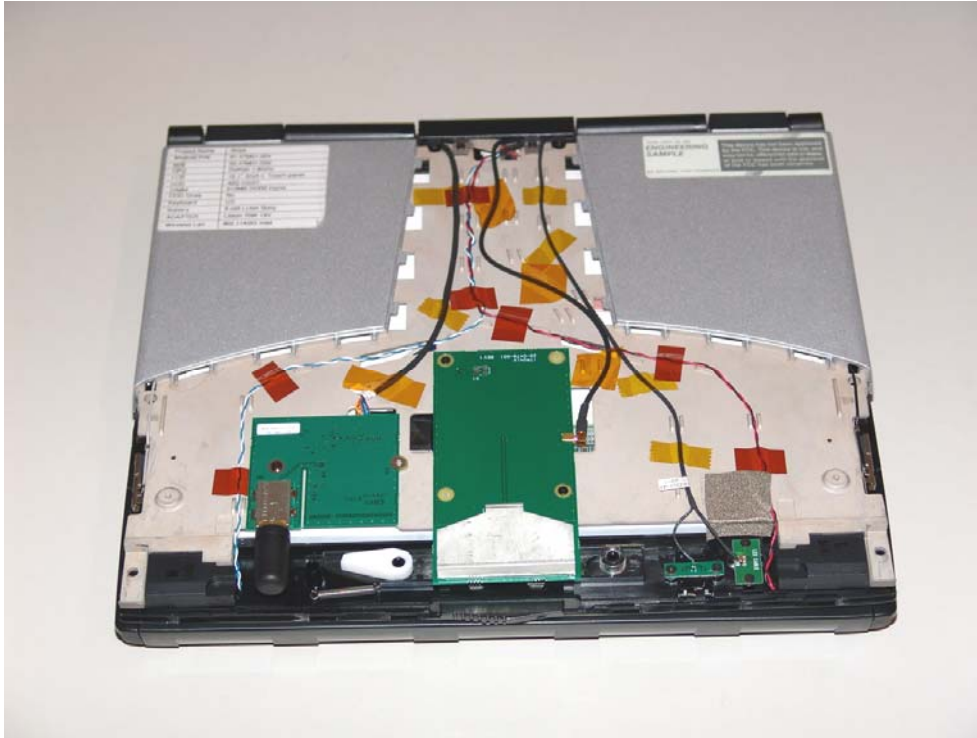
CA ASSY, BLUETOOTH  
52-0320-001



Co-located with the KBCIX600-BT and KBCIX600-IWL or KBCIX600-IWLBT

**Internal Photos IX600**

**Top view, PC closed, display cover removed**



**IX600 view back side of display upright WAN Antenna center GPS to right**

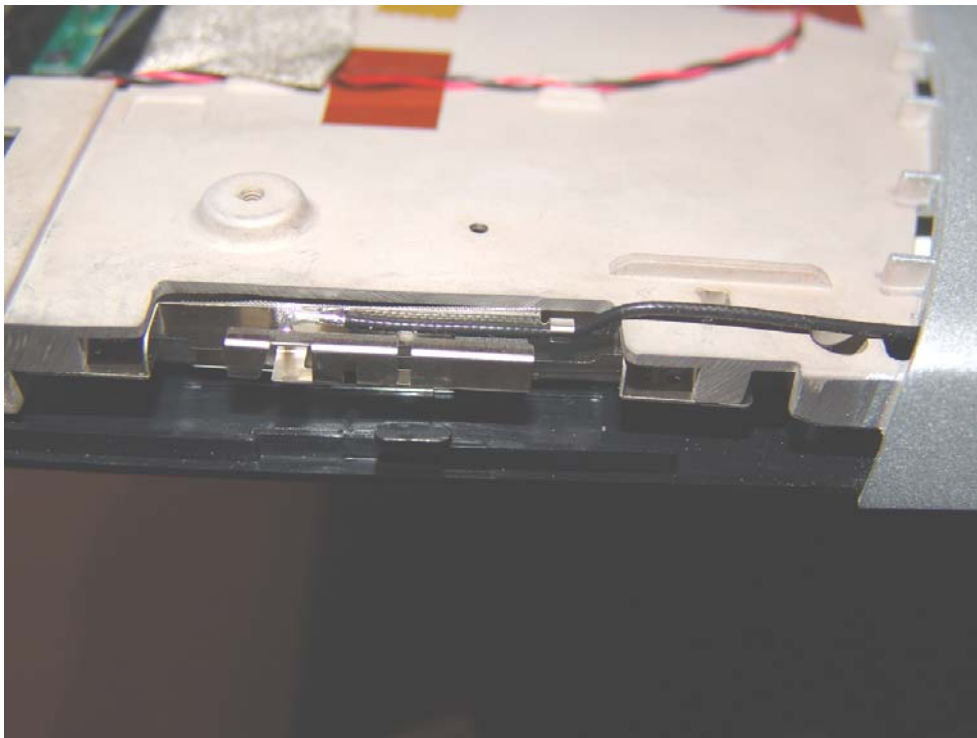




**Co-located with the KBCIX600-BT, KBCIX600-IWL and KBCIX600-IWLBT  
IX600 right side Main WLAN Antenna – WAN radio visible (silver card in slot)**



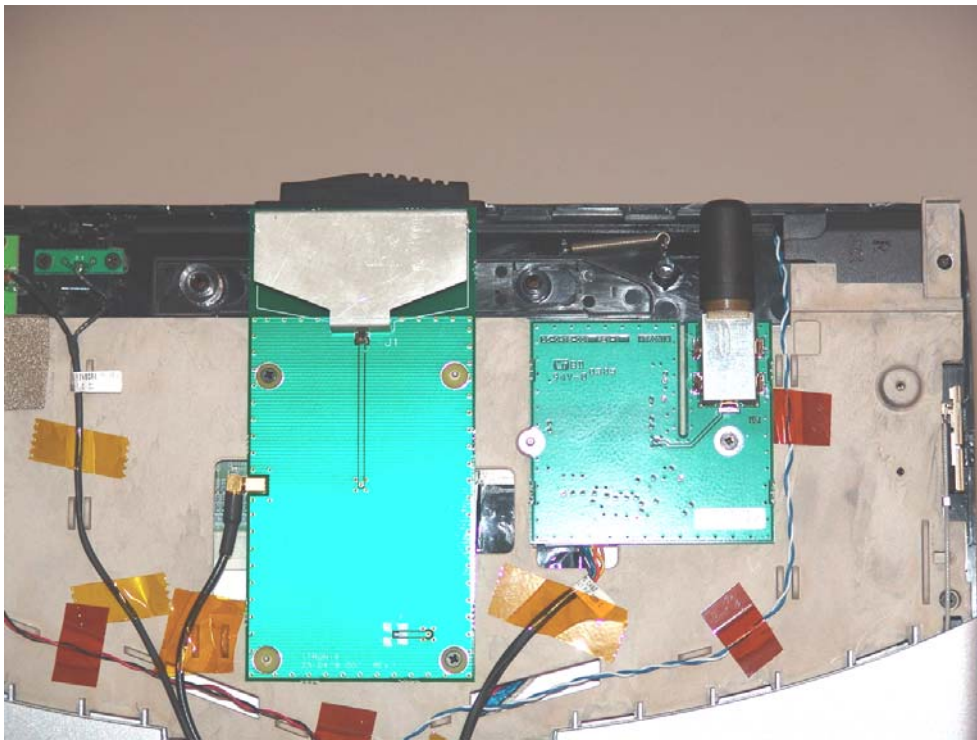
**IX600 Close Up of Main WLAN antenna above**



Co-located with the KBCIX600-BT, KBCIX600-IWL and KBCIX600-IWLBT  
IX600 left side WLAN Diversity antenna the edge



IX600 close up WAN antenna centered - GPS antenna on right side

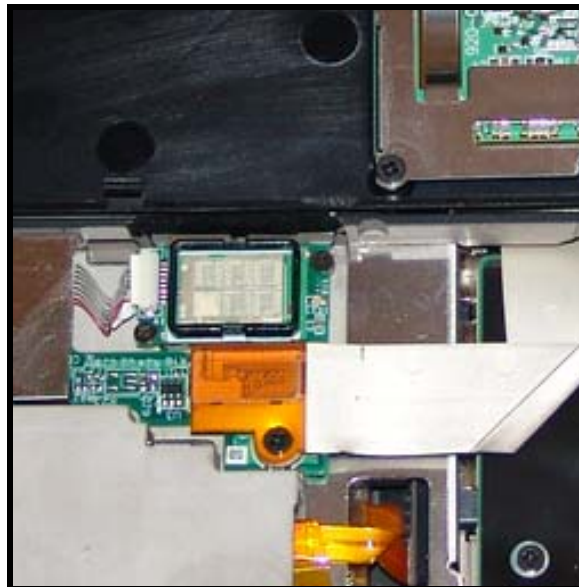


Co-located with the KBCIX600-BT, KBCIX600-IWL and KBCIX600-IWLBT  
IX600 touch pad/keyboard cover flipped up WAN Radio located lower right  
side, edge connector of module visible, Bluetooth location



Bluetooth embedded module location centered below in IX600

(Cropped & enlarged from above photo)



Co-located with the KBCIX600-BT, KBCIX600-IWL and KBCIX600-IWLBT

### WLAN Module Location Accessed From Bottom of PC



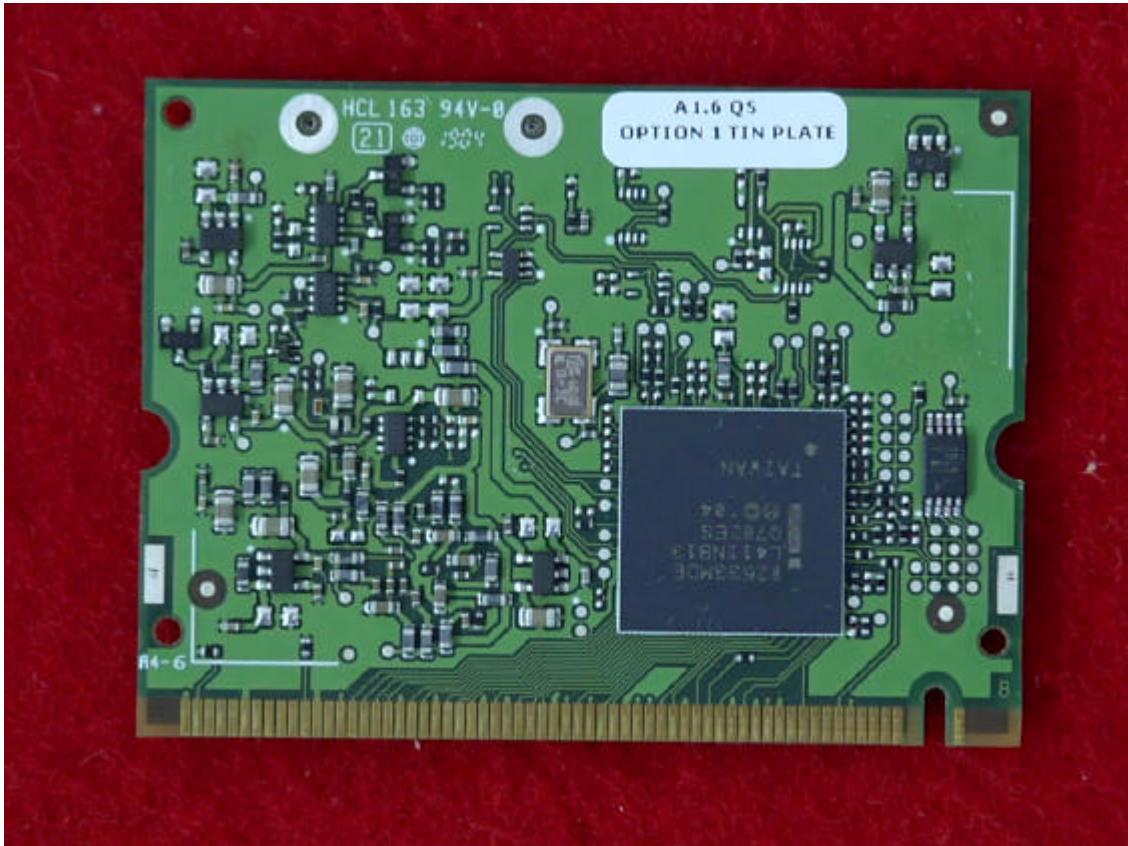
WLAN Mini PCI Card located under this cover requiring removal of 2 Phillips screws for access.





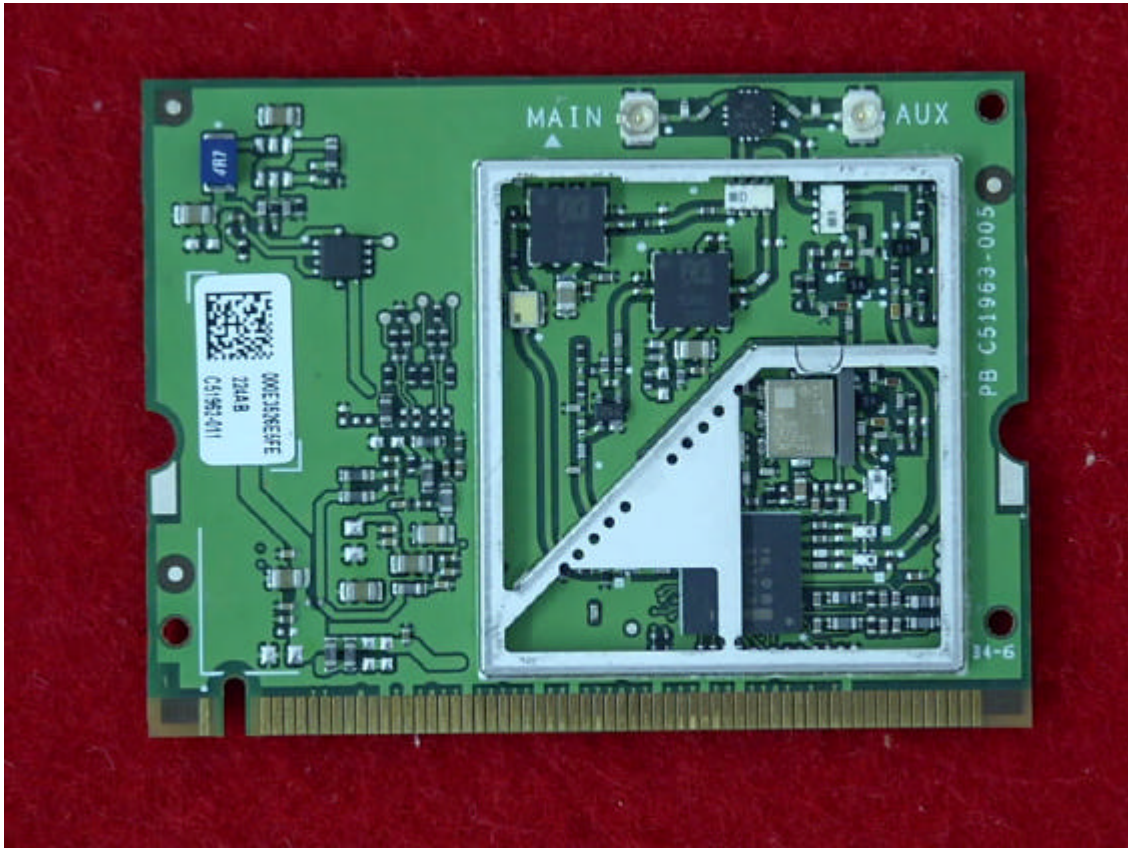


*Top View  
“Insulation removed”*



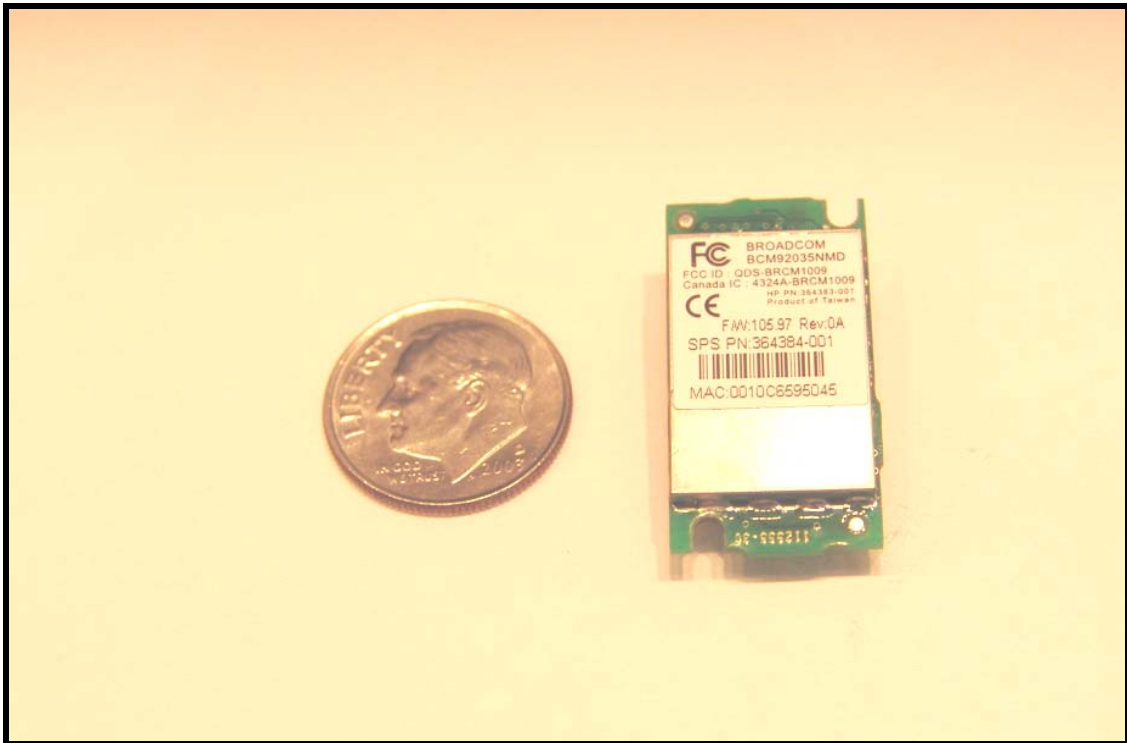
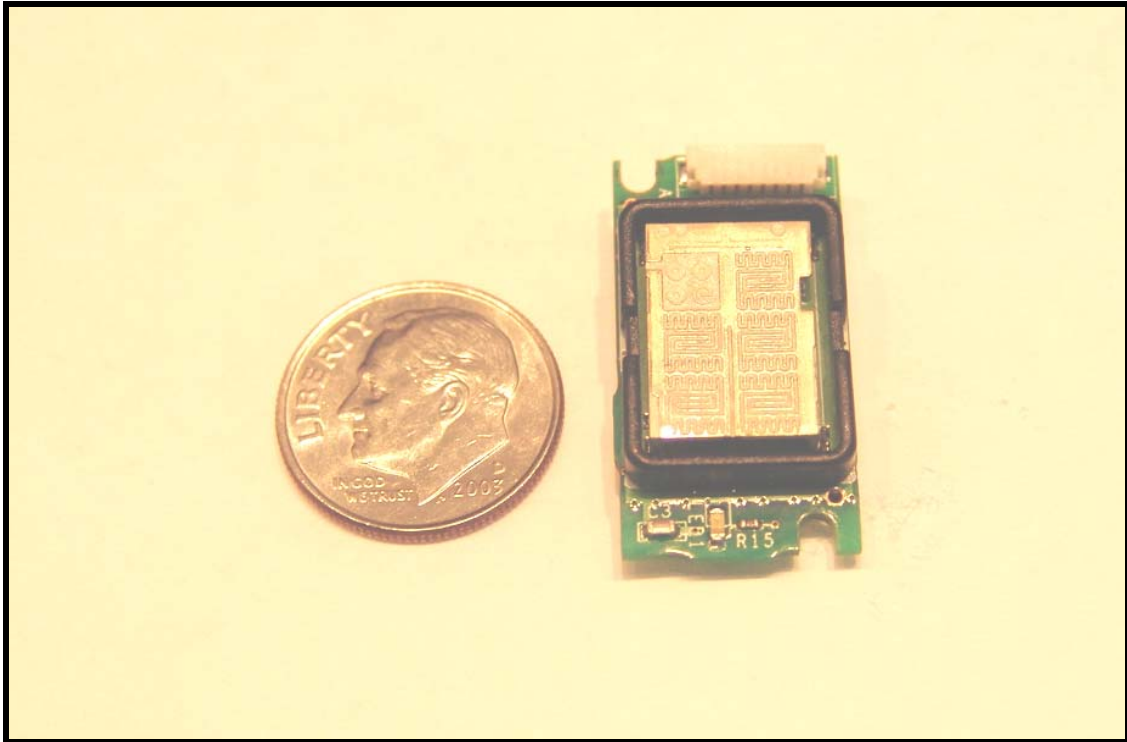
*Bottom View  
“Insulation removed”*





*Top View  
“Shielding removed”*

### Bluetooth Module and Antenna



Bluetooth Module with Covers and Label Removed on Following Page:

