

CA ASSY, GPS NINJA
52-0314-001

GPS PCBA
59-0478-001

Skycross WAN Antenna
59-0479-001

CA ASSY, COAX,
DEAC-WAN ANT
52-0318-001

Diversity WLAN
Ant

Main WLAN Ant

Coax soldered to
antenna
(Wistron NeWeb)

Coax soldered to
antenna
(Wistron NeWeb)

Optional:
CA ASSY, COAX,
CRMA-DIV ANT
52-0316-001

DEAC PCBA
59-0480-001

CA ASSY,
COAX, U.F.L
52-0236-016

WLAN Radio

CA ASSY,
COAX, CRMA EXPR
52-0319-001

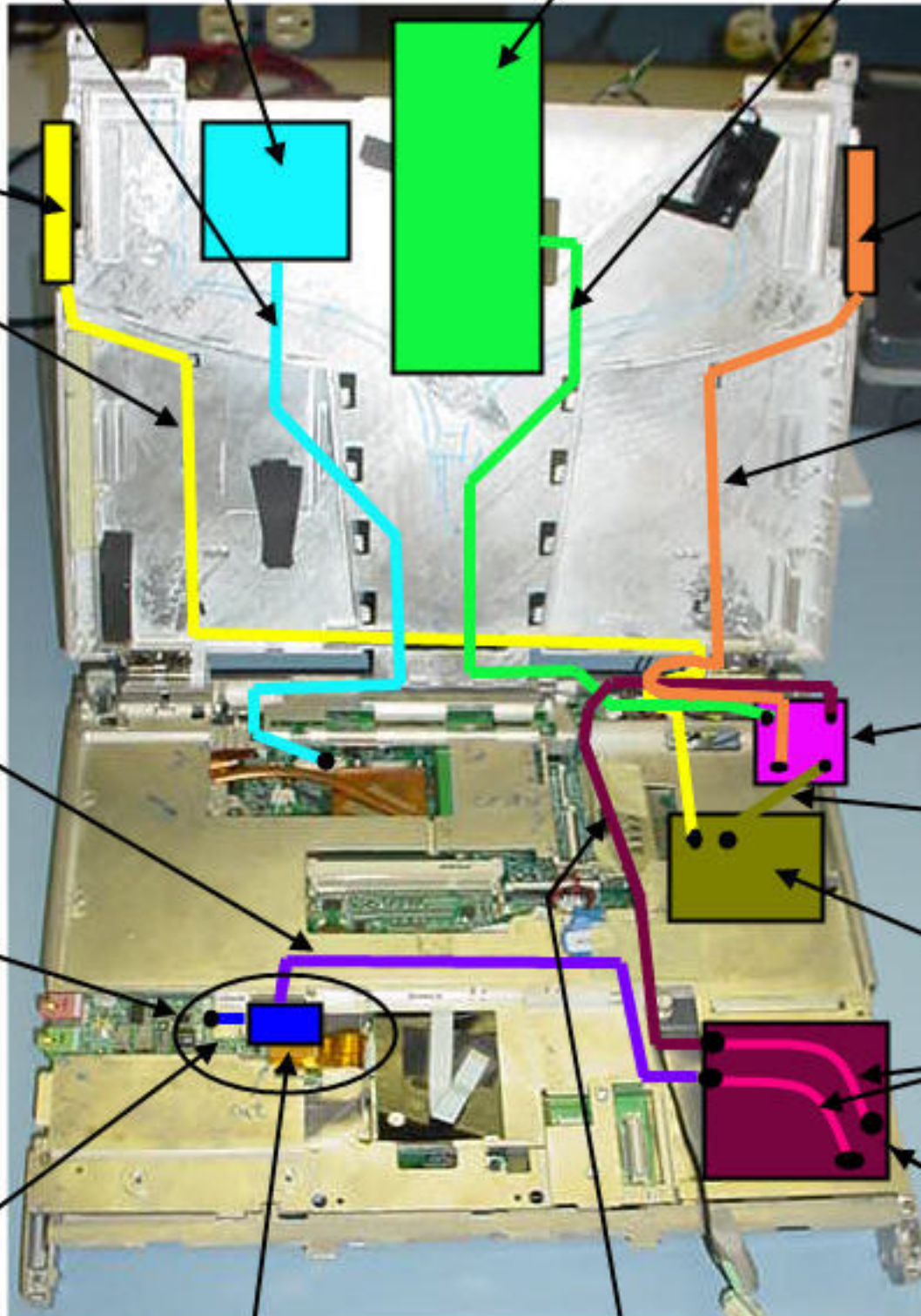
WAN radio
(CRMA Express)

Optional location
for WAN Diveristy
Ant

Bluetooth radio
with integrated Ant

CA ASSY, COAX, CRMA-DEAC
52-0315-001

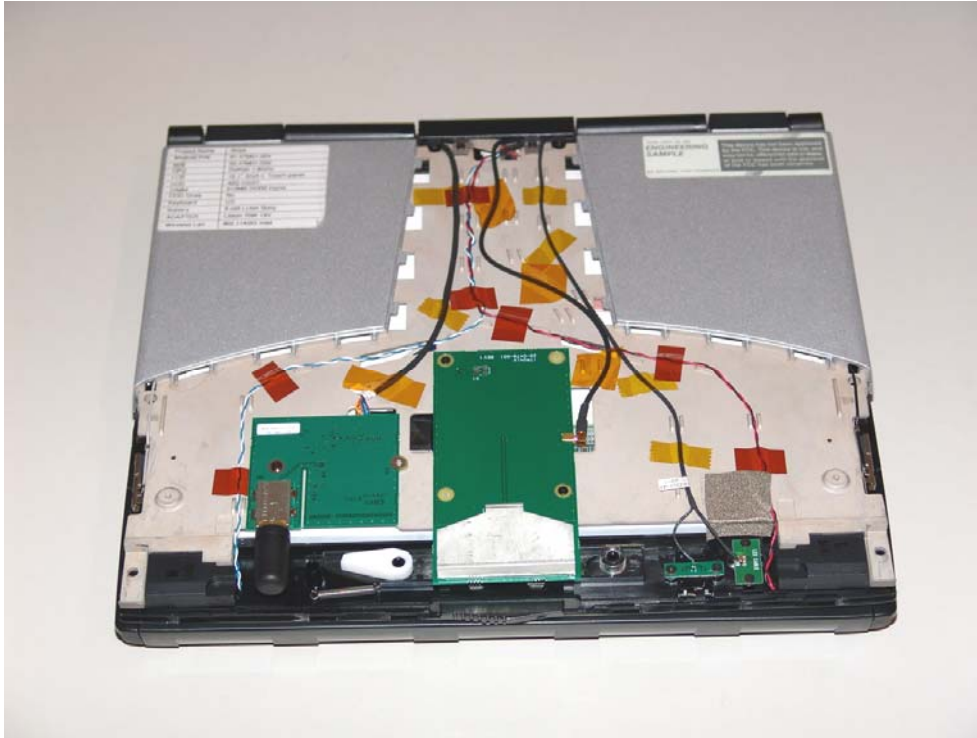
CA ASSY, BLUETOOTH
52-0320-001



Co-located with the KBCIX600-BT and KBCIX600-IWL or KBCIX600-IWLBT

Internal Photos IX600

Top view, PC closed, display cover removed



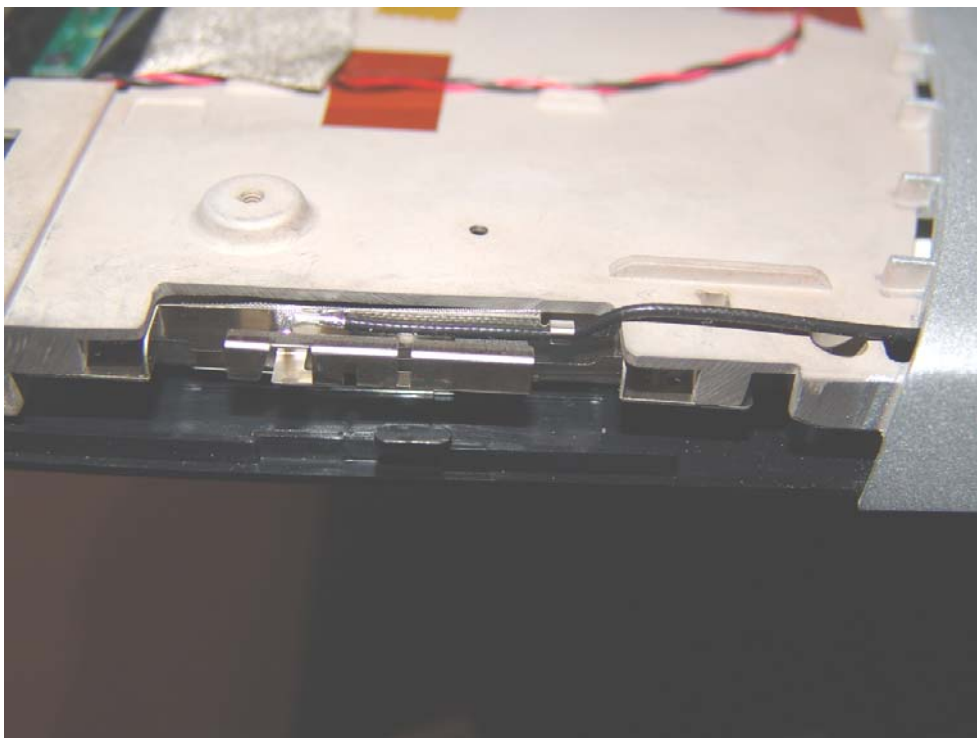
IX600 view back side of display upright WAN Antenna center GPS to right



**Co-located with the KBCIX600-BT, KBCIX600-IWL and KBCIX600-IWLBT
IX600 right side Main WLAN Antenna – WAN radio visible (silver card in slot)**



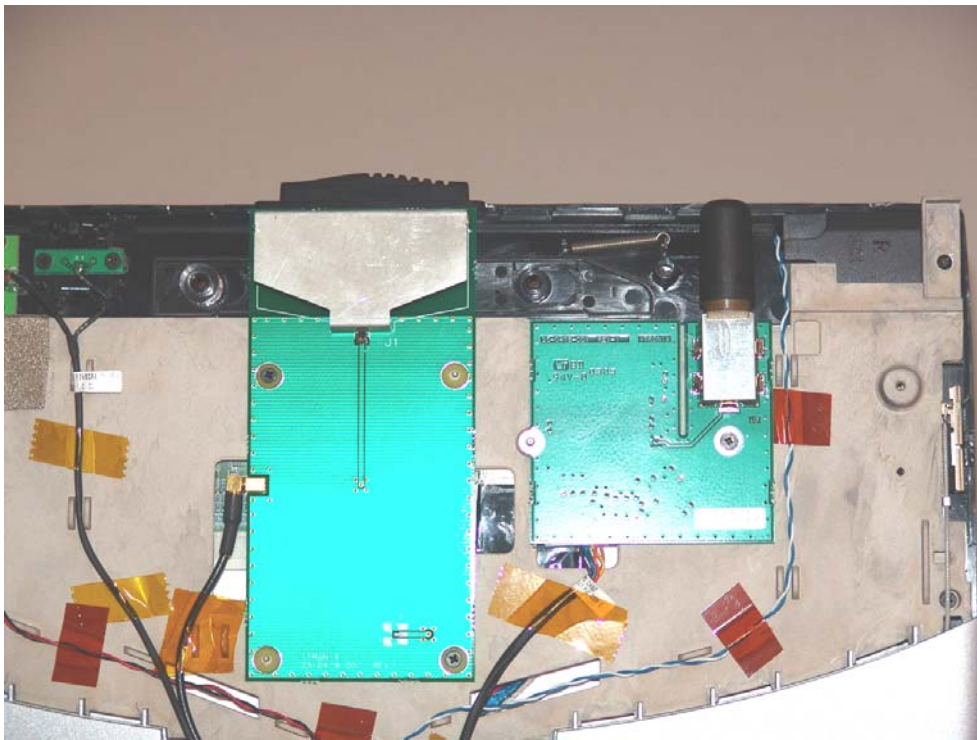
IX600 Close Up of Main WLAN antenna above



Co-located with the KBCIX600-BT, KBCIX600-IWL and KBCIX600-IWLBT
IX600 left side WLAN Diversity antenna the edge



IX600 close up WAN antenna centered - GPS antenna on right side

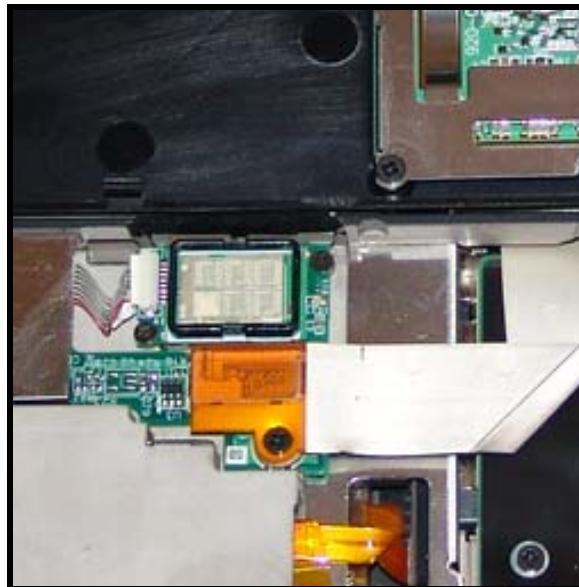


Co-located with the KBCIX600-BT, KBCIX600-IWL and KBCIX600-IWLBT
IX600 touch pad/keyboard cover flipped up WAN Radio located lower right
side, edge connector of module visible, Bluetooth location

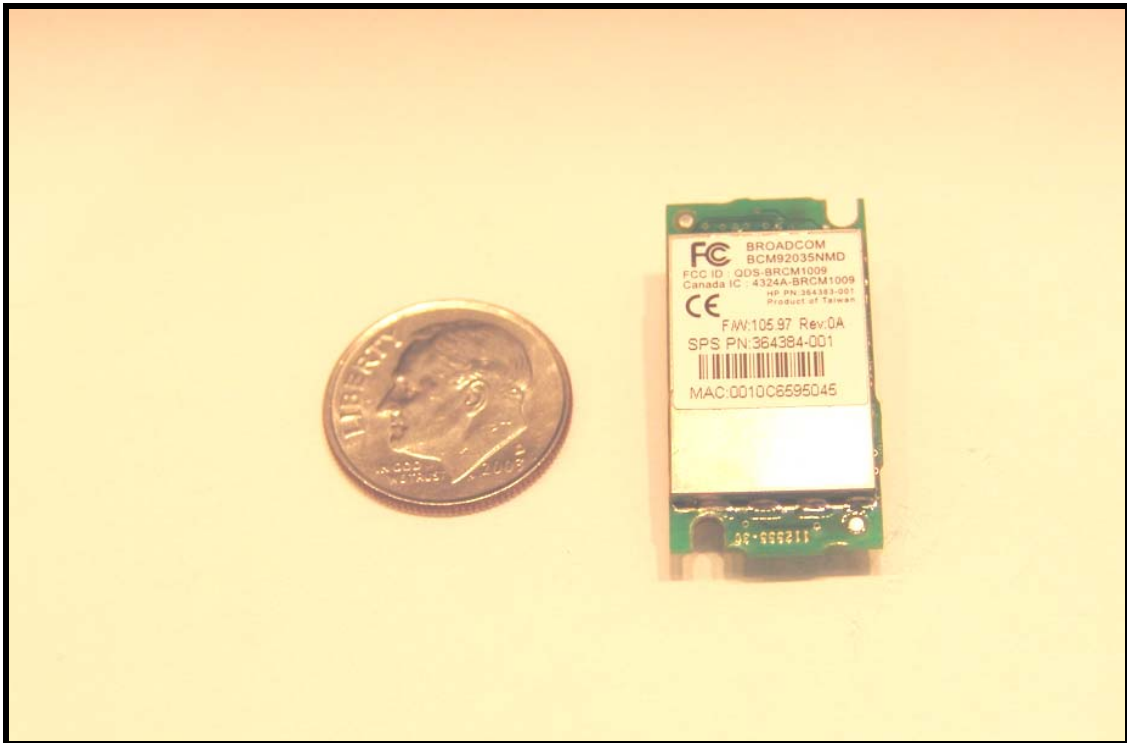
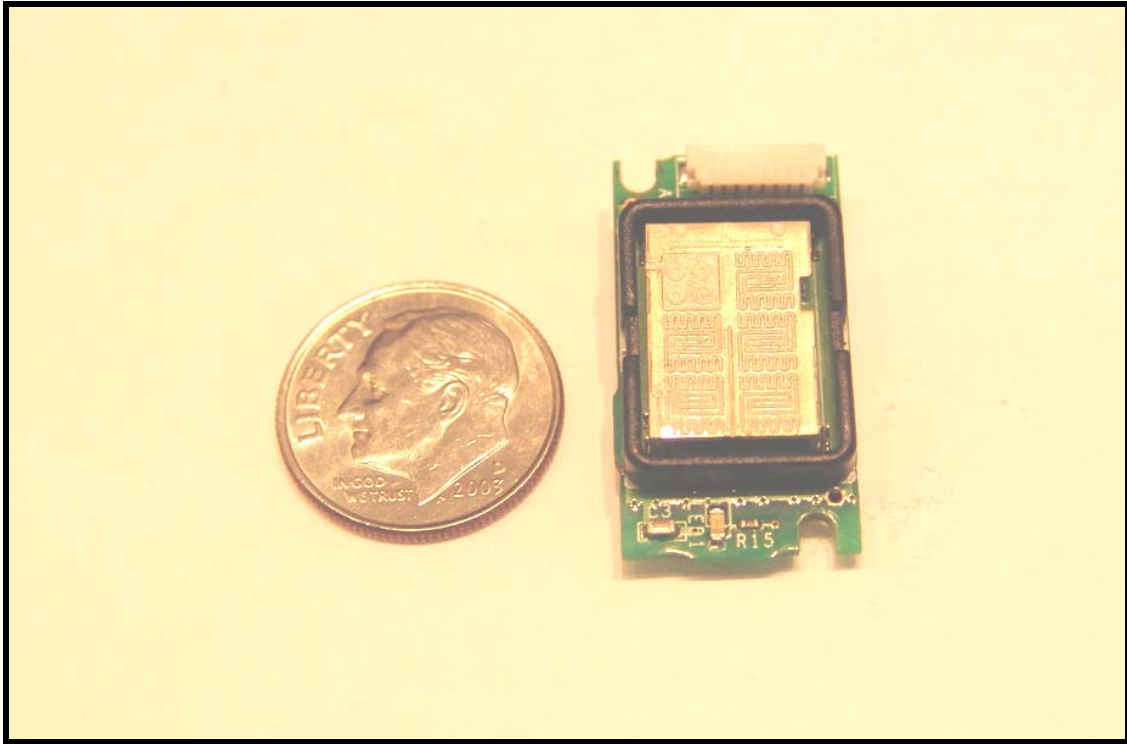


Bluetooth embedded module location centered below in IX600

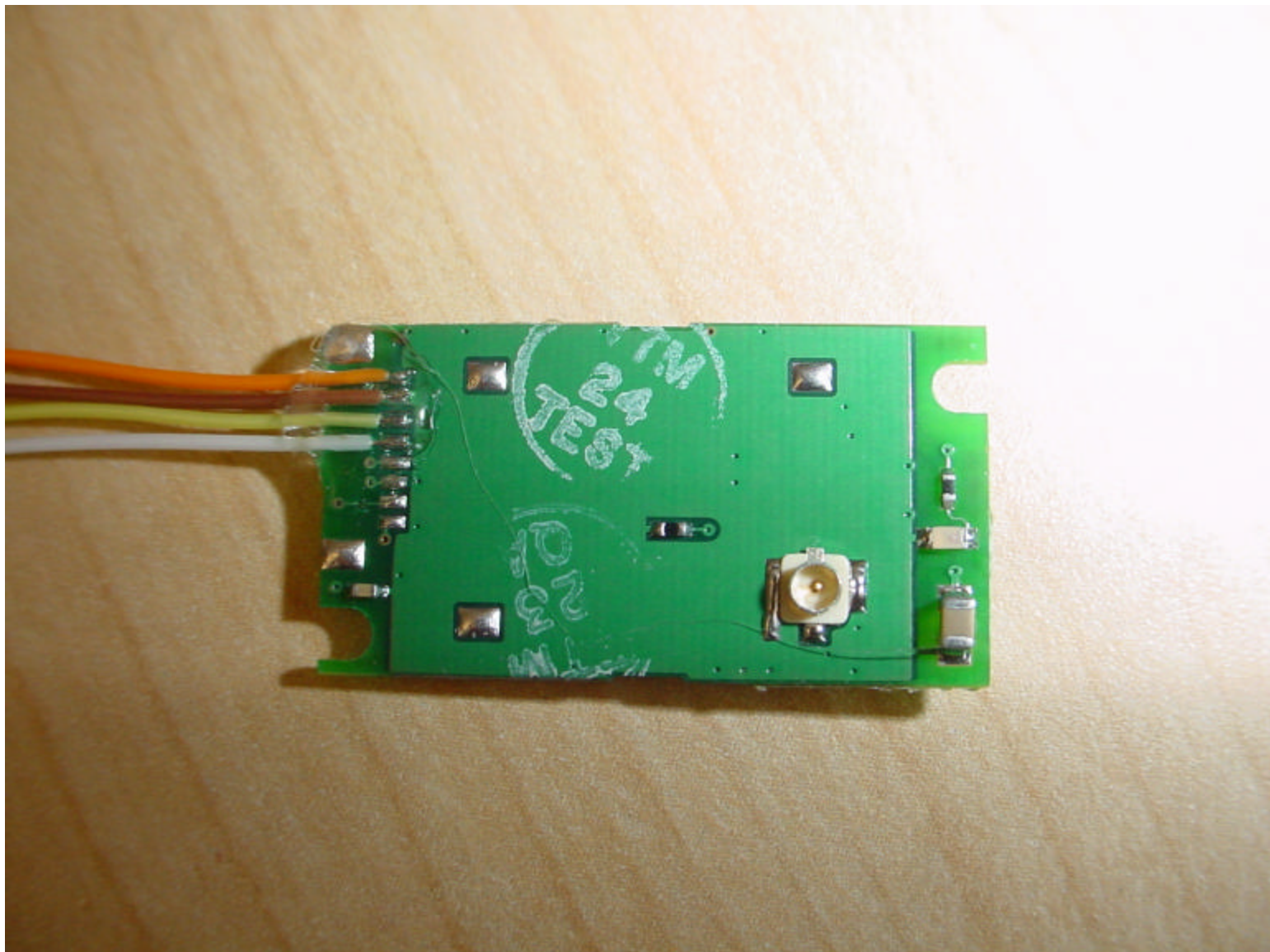
(Cropped & enlarged from above photo)

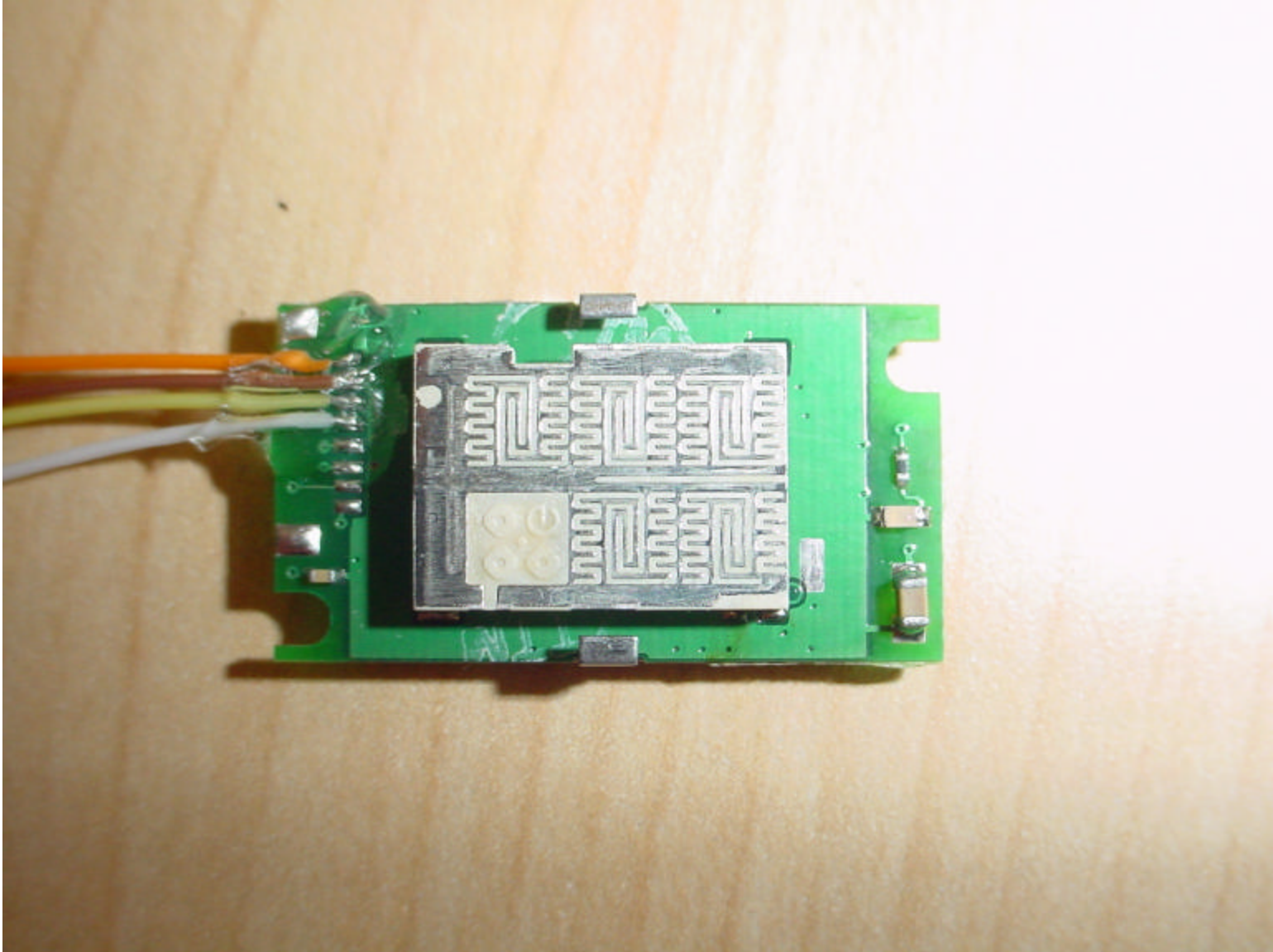


Bluetooth Module and Antenna



Bluetooth Module with Covers and Label Removed on Following Page:





Co-located with the KBCIX600-BT, KBCIX600-IWL and KBCIX600-IWLB

WLAN Module Location Accessed From Bottom of PC

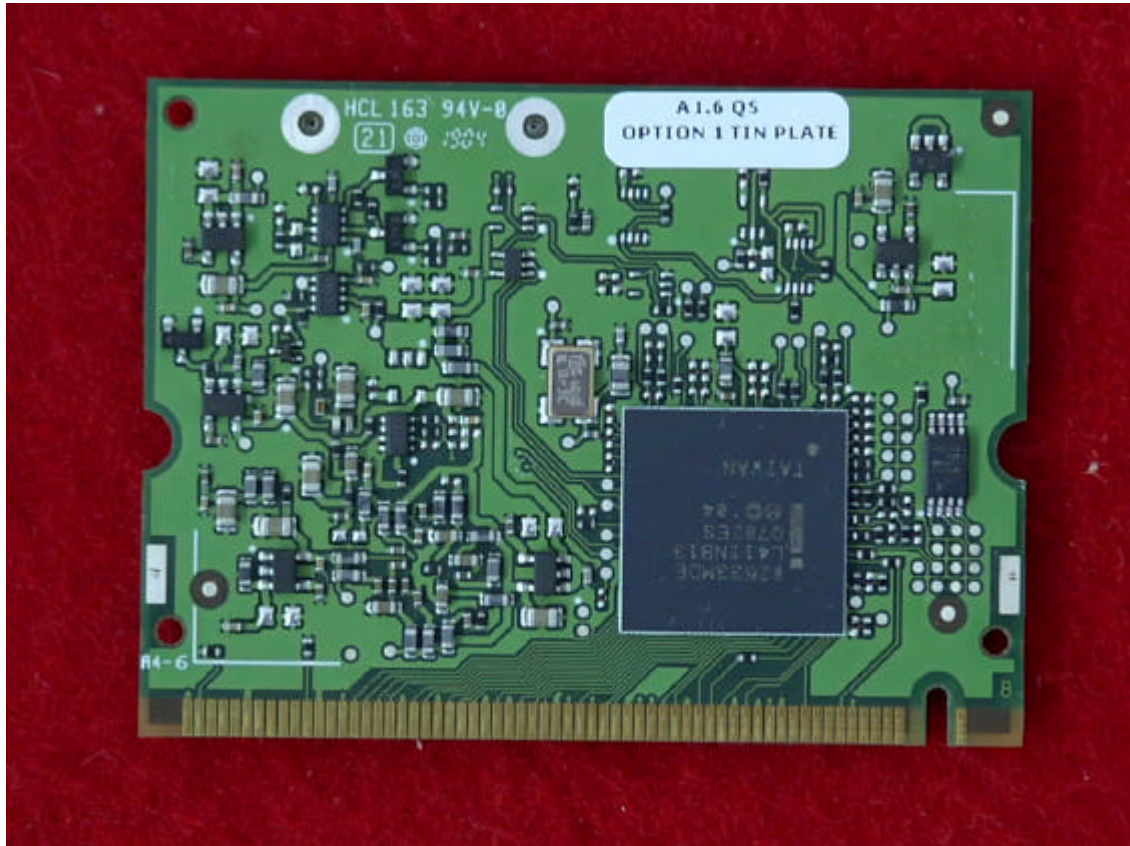


WLAN Mini PCI Card located under this cover requiring removal of 2 Phillips screws for access.

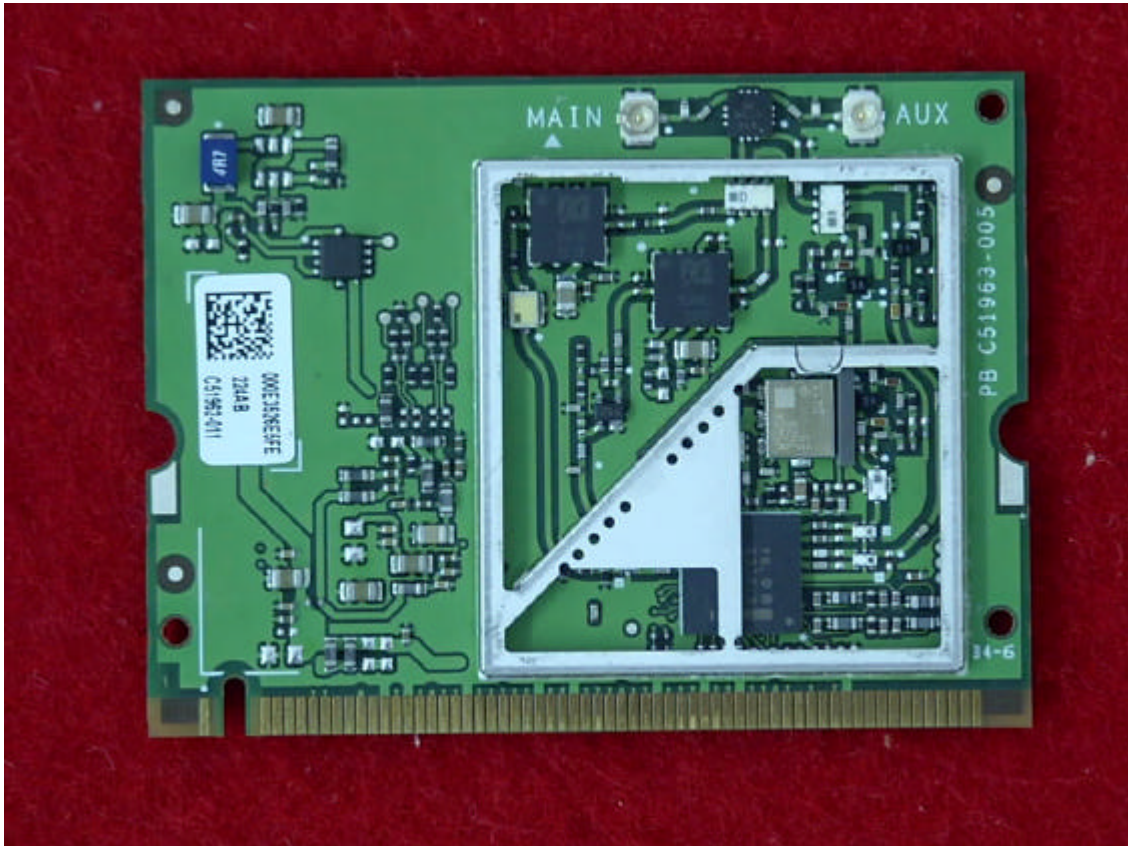




Top View
“Insulation removed”



*Bottom View
“Insulation removed”*



*Top View
“Shielding removed”*