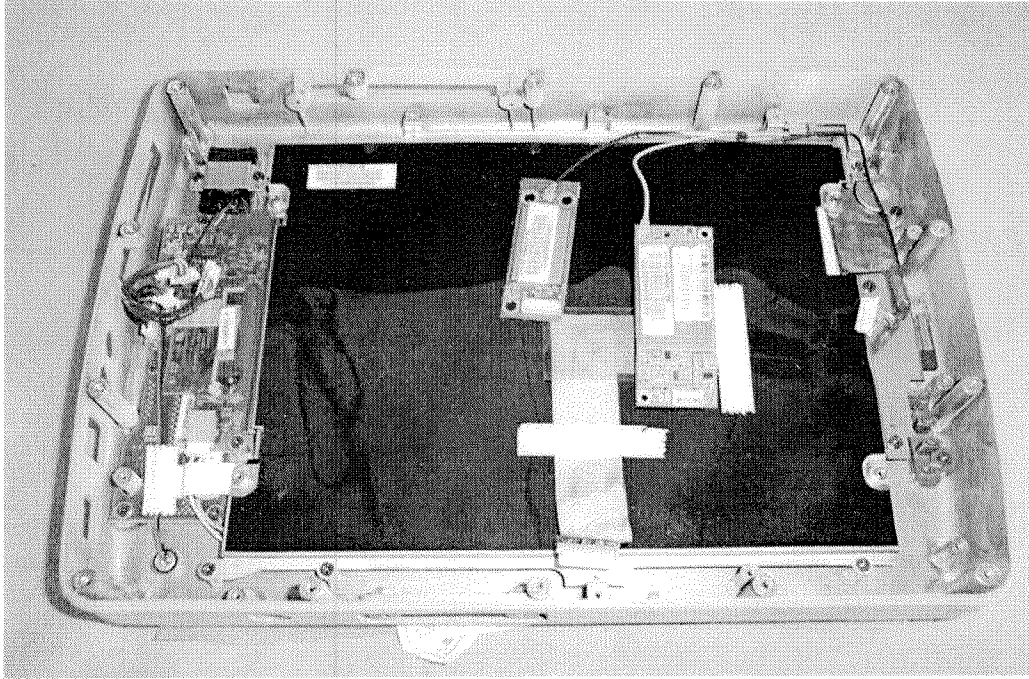


Part 1 INTERNAL PHOTOGRAPHS OF THE IX300

NOTE: This FCC ID / configuration does not contain a WLAN.

The submitted photos of the IX300 under [Part 2 INTERNAL PHOTOGRAPHS](#) are from a previous filing under FCC ID: FKGTABLETPC, the Bluetooth Intentional Radiators and are physically and electrically identical to the current IX300 configuration except, for the addition of the AirCard 775 which utilizes the PCMCIA slot. The ONLY other change is on page 6 and a corrected copy of page 6 is on the following page. The Bluetooth and WLAN antennas were simply switched one for the other indicated on the following page.

Internal of EUT --- 5



Internal of EUT --- 6

