

Itronix Corporation FCC ID: KBCIX260RIM902

SAM Phantom; Flat Section; Position: (90°,0°)

Probe: ET3DV6 - SN1387; ConvF(6.40,6.40,6.40); Crest factor: 4.0

900 MHz Muscle: $\sigma = 1.07$ mho/m $\epsilon_r = 55.6$ $\rho = 1.00$ g/cm³

Coarse: Dx = 15.0, Dy = 15.0, Dz = 10.0

Cube 5x5x7

SAR (1g): 1.35 mW/g, SAR (10g): 0.808 mW/g

Body SAR - Back of LCD Display (Closed)

Antenna Parallel to Planar Phantom (Stowed Position)

0.0 cm Separation Distance from Back of LCD Display to Planar Phantom

Itronix IX260 Rugged Laptop PC with RIM 902 Mobitex Radio Modem

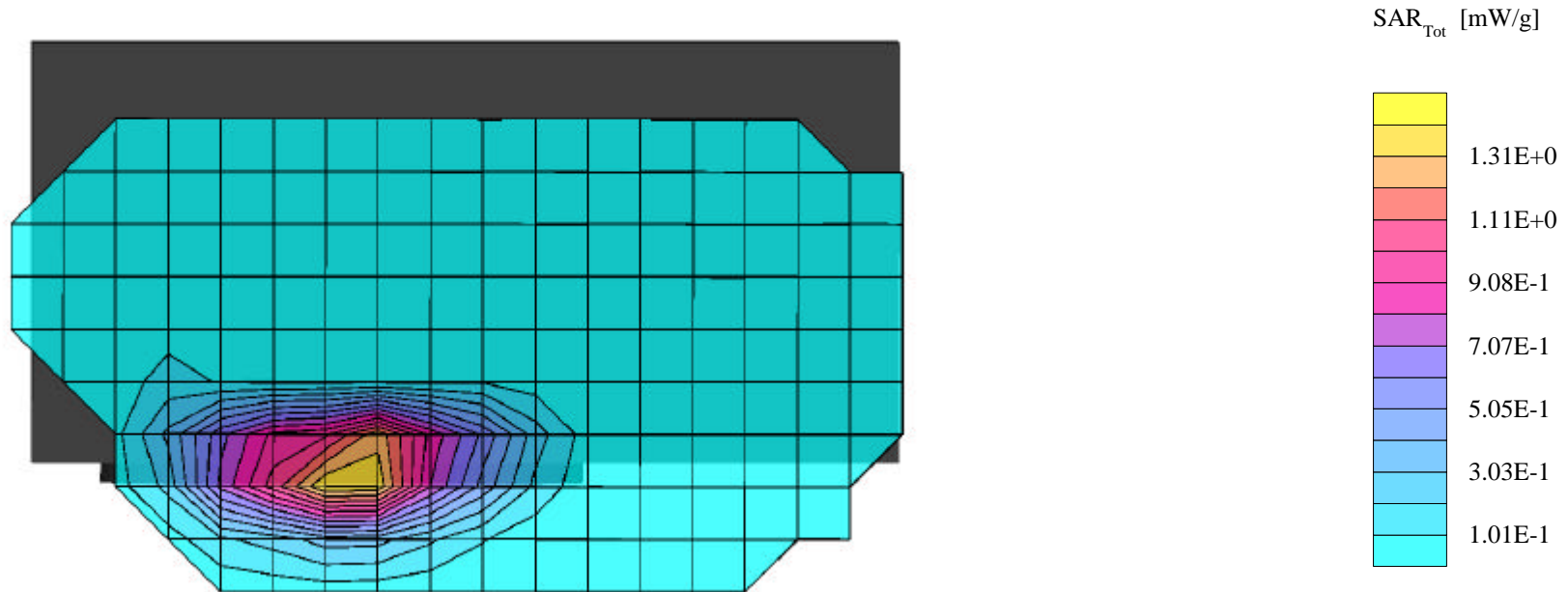
Modulated Carrier

Channel 721 [899.0 MHz]

Conducted Power: 33.1 dBm

Ambient Temp: 24.4°C; Fluid Temp: 23.6°C

Date Tested: June 11, 2003

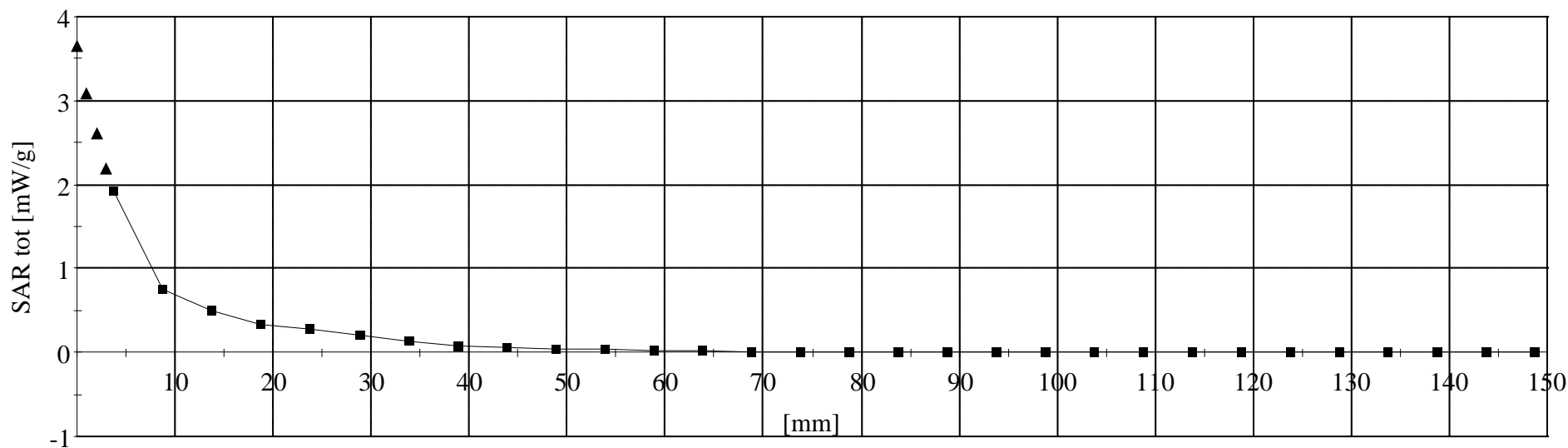
Right Side of LCD Display (Antenna Side)

Itronix Corporation FCC ID: KBCIX260RIM902

SAM Phantom; Flat Section
Probe: ET3DV6 - SN1387; ConvF(6.40,6.40,6.40); Crest factor: 4.0
900 MHz Muscle: $\sigma = 1.07$ mho/m $\epsilon_r = 55.6$ $\rho = 1.00$ g/cm³

Z-Axis Extrapolation at Peak SAR Location

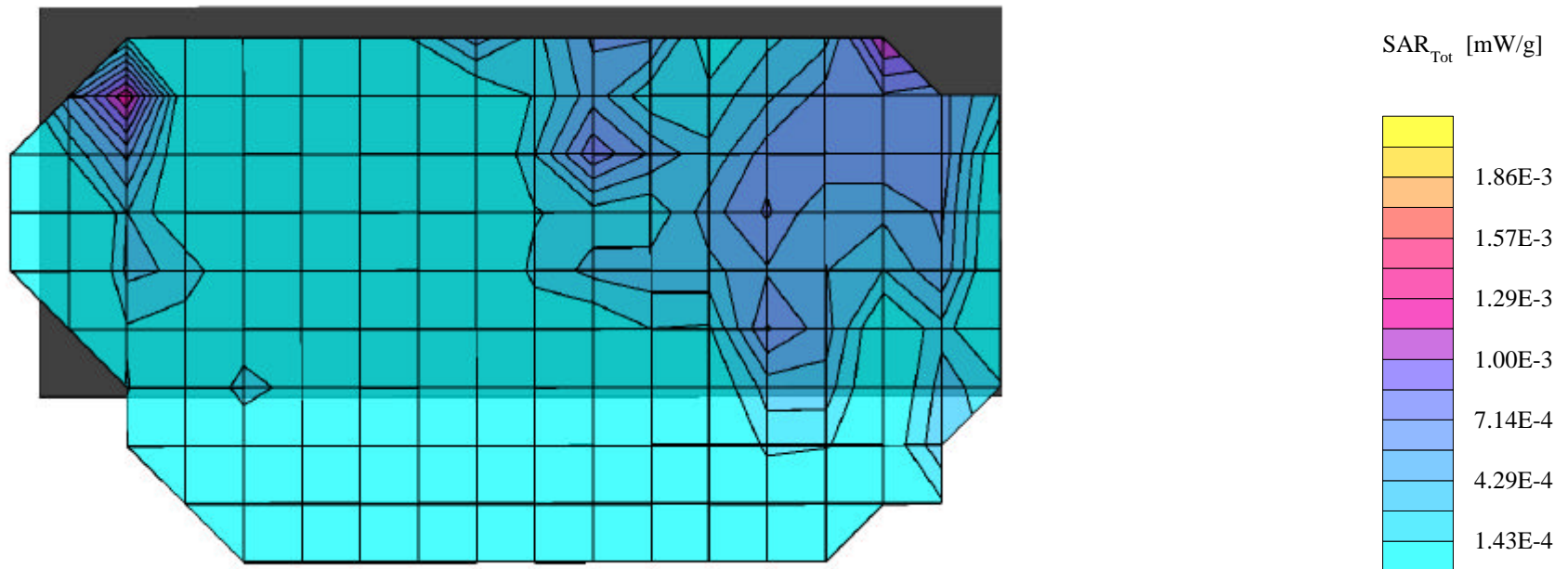
Body SAR - Back of LCD Display (Closed)
Antenna Parallel to Planar Phantom (Stowed Position)
0.0 cm Separation Distance from Back of LCD Display to Planar Phantom
Itronix IX260 Rugged Laptop PC with RIM 902 Mobitex Radio Modem
Modulated Carrier
Channel 721 [899.0 MHz]
Conducted Power: 33.1 dBm
Ambient Temp: 24.4°C; Fluid Temp: 23.6°C
Date Tested: June 11, 2003



Itronix Corporation FCC ID: KBCIX260RIM902

SAM Phantom; Flat Section; Position: (90°,180°)
Probe: ET3DV6 - SN1387; ConvF(6.40,6.40,6.40); Crest factor: 4.0
900 MHz Muscle: $\sigma = 1.07$ mho/m $\epsilon_r = 55.6$ $\rho = 1.00$ g/cm³
Coarse: Dx = 15.0, Dy = 15.0, Dz = 10.0

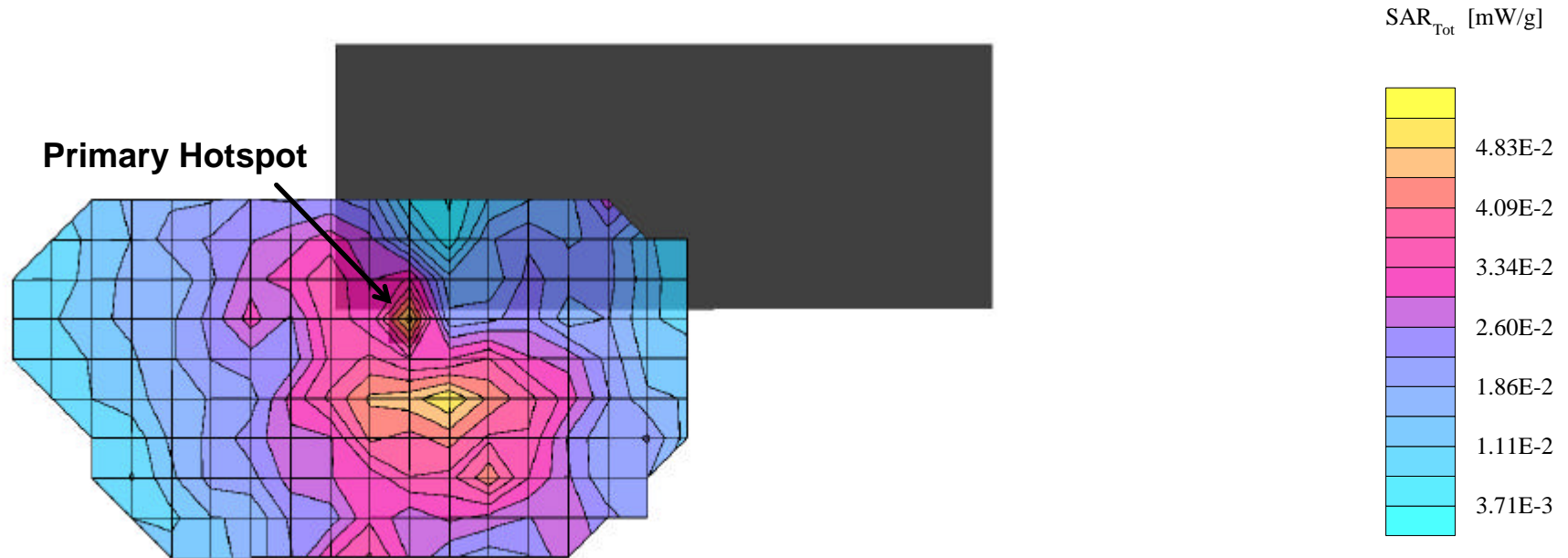
Body SAR - Back of LCD Display (Closed)
Antenna Parallel to Planar Phantom (Stowed Position)
0.0 cm Separation Distance from Back of LCD Display to Planar Phantom
Itronix IX260 Rugged Laptop PC with RIM 902 Mobitex Radio Modem
Modulated Carrier
Channel 721 [899.0 MHz]
Conducted Power: 33.1 dBm
Ambient Temp: 24.4°C; Fluid Temp: 23.6°C
Date Tested: June 11, 2003

Coarse scan to show Left Side of LCD Display (Opposite Side to Antenna)

Itronix Corporation FCC ID: KBCIX260RIM902

SAM Phantom; Flat Section; Position: (90°,0°)
Probe: ET3DV6 - SN1387; ConvF(6.40,6.40,6.40); Crest factor: 4.0
900 MHz Muscle: $\sigma = 1.07$ mho/m $\epsilon_r = 55.6$ $\rho = 1.00$ g/cm³
Coarse: Dx = 15.0, Dy = 15.0, Dz = 10.0
Cube 5x5x7
SAR (1g): 0.0417 mW/g, SAR (10g): 0.0211 mW/g

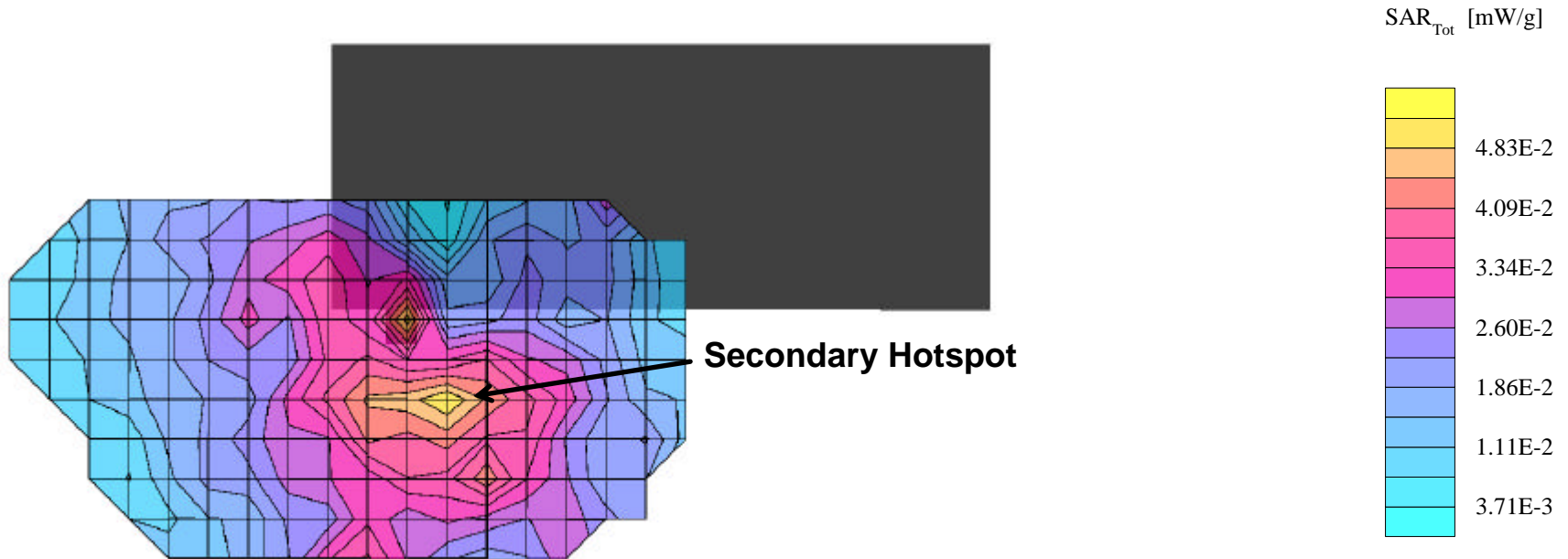
Body SAR - Back of LCD Display (Closed)
Antenna Perpendicular to Planar Phantom (180°)
0.0 cm Separation Distance from Back of LCD Display to Planar Phantom
Itronix IX260 Rugged Laptop PC with RIM 902 Mobitex Radio Modem
Modulated Carrier
Channel 721 [899.0 MHz]
Conducted Power: 33.1 dBm
Ambient Temp: 24.4°C; Fluid Temp: 23.6°C
Date Tested: June 11, 2003

Primary Hotspot Evaluation - Right Side of LCD Display (Antenna Side)

Itronix Corporation FCC ID: KBCIX260RIM902

SAM Phantom; Flat Section; Position: (90°,0°)
Probe: ET3DV6 - SN1387; ConvF(6.40,6.40,6.40); Crest factor: 4.0
900 MHz Muscle: $\sigma = 1.07$ mho/m $\epsilon_r = 55.6$ $\rho = 1.00$ g/cm³
Coarse: Dx = 15.0, Dy = 15.0, Dz = 10.0
Cube 5x5x7
SAR (1g): 0.0402 mW/g, SAR (10g): 0.0276 mW/g

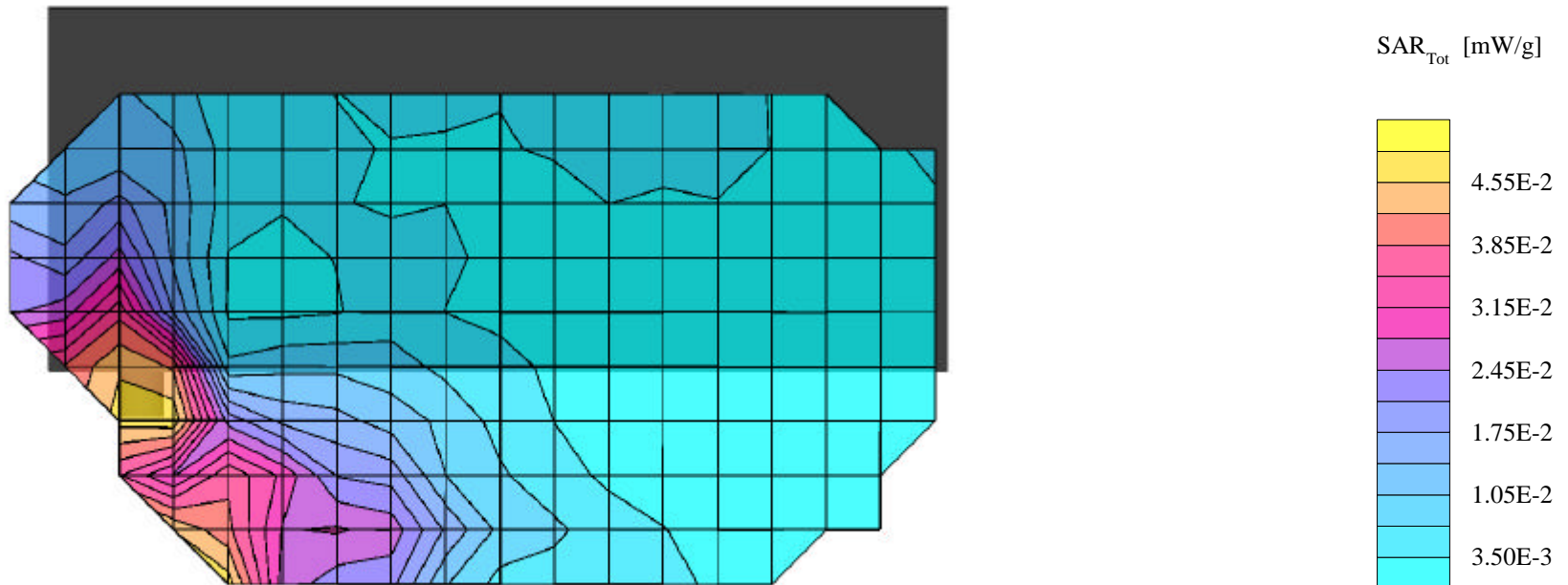
Body SAR - Back of LCD Display (Closed)
Antenna Perpendicular to Planar Phantom (180°)
0.0 cm Separation Distance from Back of LCD Display to Planar Phantom
Itronix IX260 Rugged Laptop PC with RIM 902 Mobitex Radio Modem
Modulated Carrier
Channel 721 [899.0 MHz]
Conducted Power: 33.1 dBm
Ambient Temp: 24.4°C; Fluid Temp: 23.6°C
Date Tested: June 11, 2003

Secondary Hotspot Evaluation - Right Side of LCD Display (Antenna Side)

Itronix Corporation FCC ID: KBCIX260RIM902

SAM Phantom; Flat Section; Position: (90°,0°)
Probe: ET3DV6 - SN1387; ConvF(6.40,6.40,6.40); Crest factor: 4.0
900 MHz Muscle: $\sigma = 1.07$ mho/m $\epsilon_r = 55.6$ $\rho = 1.00$ g/cm³
Coarse: Dx = 15.0, Dy = 15.0, Dz = 10.0

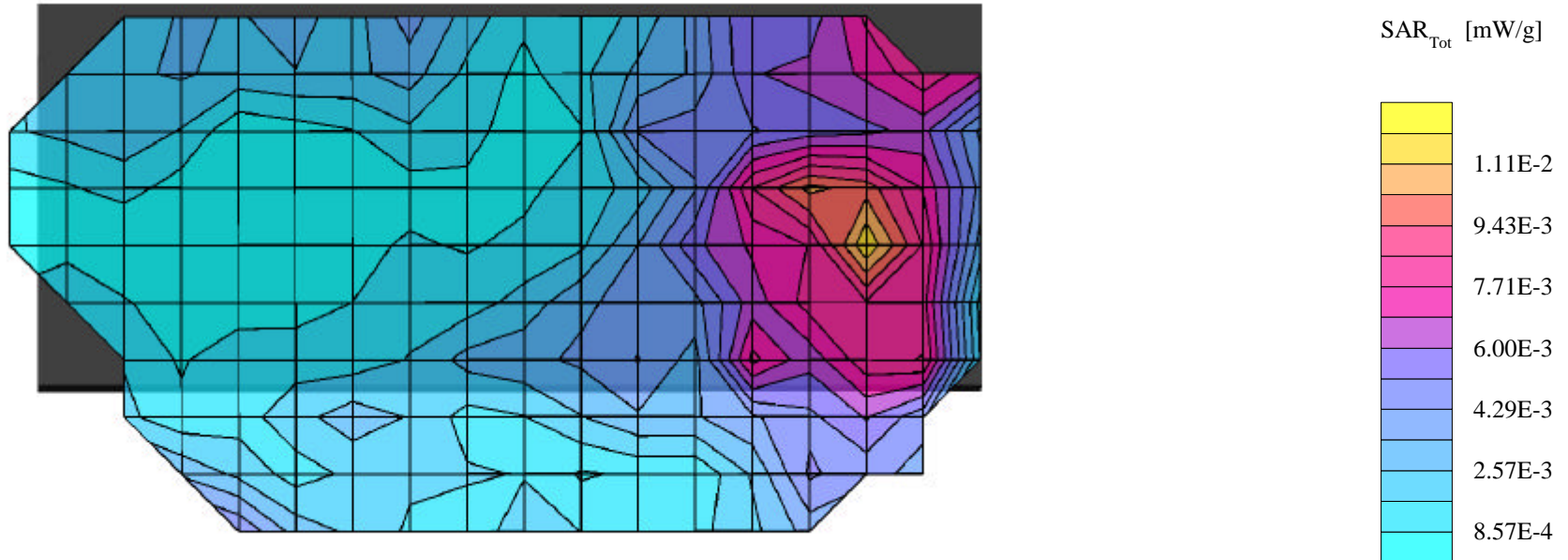
Body SAR - Back of LCD Display (Closed)
Antenna Perpendicular to Planar Phantom (180°)
0.0 cm Separation Distance from Back of LCD Display to Planar Phantom
Itronix IX260 Rugged Laptop PC with RIM 902 Mobitex Radio Modem
Modulated Carrier
Channel 721 [899.0 MHz]
Conducted Power: 33.1 dBm
Ambient Temp: 24.4°C; Fluid Temp: 23.6°C
Date Tested: June 11, 2003

Coarse scan to show whole area of Right Side LCD Display (Antenna Side)

Itronix Corporation FCC ID: KBCIX260RIM902

SAM Phantom; Flat Section; Position: (90°,180°)
Probe: ET3DV6 - SN1387; ConvF(6.40,6.40,6.40); Crest factor: 4.0
900 MHz Muscle: $\sigma = 1.07$ mho/m $\epsilon_r = 55.9$ $\rho = 1.00$ g/cm³
Coarse: Dx = 15.0, Dy = 15.0, Dz = 10.0

Body SAR - Back of LCD Display (Closed)
Antenna Perpendicular to Planar Phantom (180°)
0.0 cm Separation Distance from Back of LCD Display to Planar Phantom
Itronix IX260 Rugged Laptop PC with RIM 902 Mobitex Radio Modem
Modulated Carrier
Channel 721 [899.0 MHz]
Conducted Power: 33.1 dBm
Ambient Temp: 24.4°C; Fluid Temp: 23.6°C
Date Tested: June 11, 2003

Coarse scan to show Left Side of LCD Display (Opposite Side to Antenna)

Itronix Corporation FCC ID: KBCIX260RIM902

SAM Phantom; Flat Section; Position: (270°,180°)

Probe: ET3DV6 - SN1387; ConvF(6.40,6.40,6.40); Crest factor: 4.0

900 MHz Muscle: $\sigma = 1.07$ mho/m $\epsilon_r = 55.6$ $\rho = 1.00$ g/cm³

Coarse: Dx = 15.0, Dy = 15.0, Dz = 10.0

Cube 5x5x7

SAR (1g): 0.0341 mW/g, SAR (10g): 0.0224 mW/g

Body SAR - Bottom of Laptop PC (LCD Display Closed)

Antenna Parallel to Planar Phantom (Stowed Position)

0.0 cm Separation Distance from Bottom of Laptop PC to Planar Phantom

Itronix IX260 Rugged Laptop PC with RIM 902 Mobitex Radio Modem

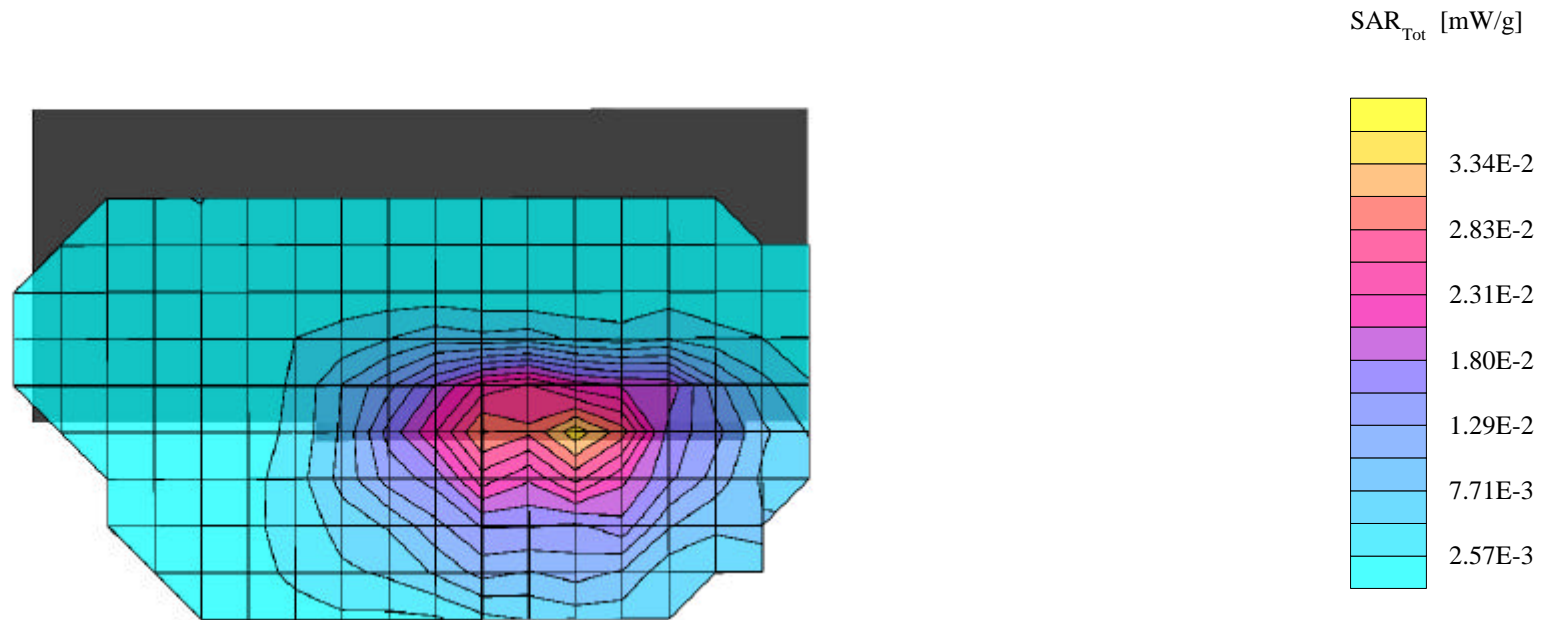
Modulated Carrier

Channel 721 [899.0 MHz]

Conducted Power: 33.1 dBm

Ambient Temp: 24.4°C; Fluid Temp: 23.6°C

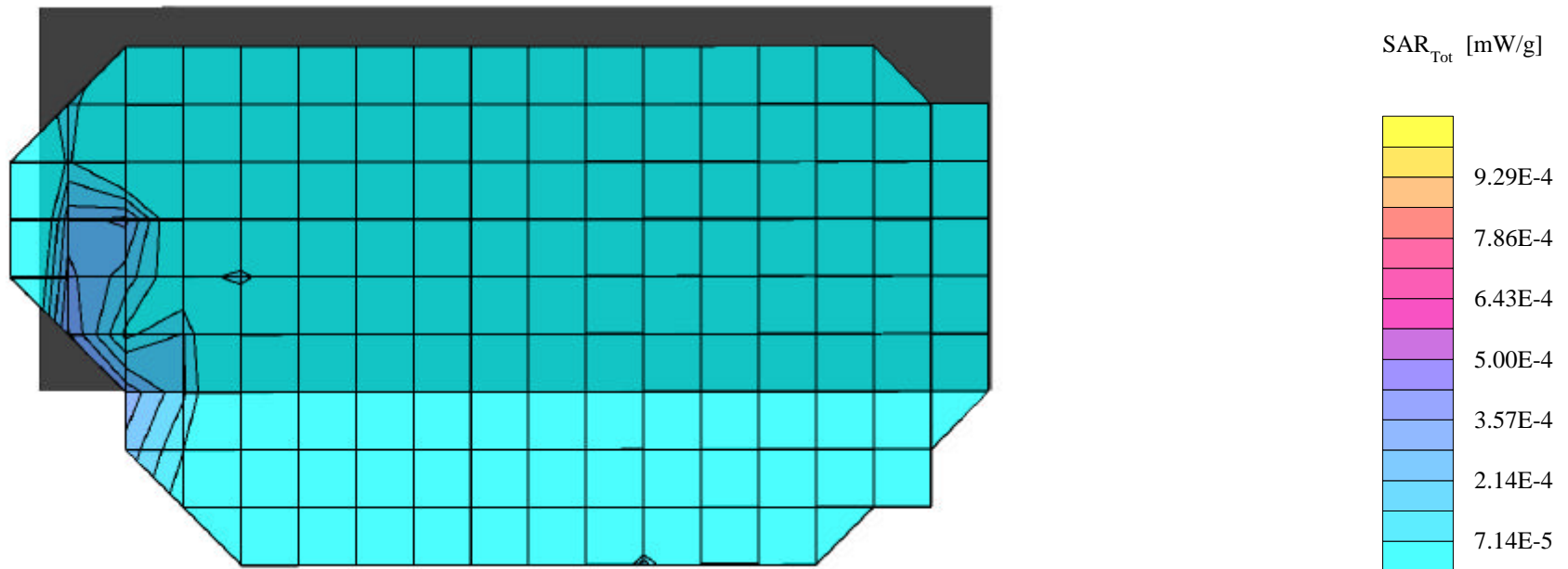
Date Tested: June 11, 2003

Bottom Right Side of Laptop PC (Antenna Side)

Itronix Corporation FCC ID: KBCIX260RIM902

SAM Phantom; Flat Section; Position: (270°,0°)
Probe: ET3DV6 - SN1387; ConvF(6.40,6.40,6.40); Crest factor: 4.0
900 MHz Muscle: $\sigma = 1.07$ mho/m $\epsilon_r = 55.6$ $\rho = 1.00$ g/cm³
Coarse: Dx = 15.0, Dy = 15.0, Dz = 10.0

Body SAR - Bottom of Laptop PC (LCD Display Closed)
Antenna Parallel to Planar Phantom (Stowed Position)
0.0 cm Separation Distance from Bottom of Laptop PC to Planar Phantom
Itronix IX260 Rugged Laptop PC with RIM 902 Mobitex Radio Modem
Modulated Carrier
Channel 721 [899.0 MHz]
Conducted Power: 33.1 dBm
Ambient Temp: 24.4°C; Fluid Temp: 23.6°C
Date Tested: June 11, 2003

Coarse scan to show Bottom Left Side of Laptop PC (Opposite Side to Antenna)

Itronix Corporation FCC ID: KBCIX260RIM902

SAM Phantom; Flat Section; Position: (270°,180°)

Probe: ET3DV6 - SN1387; ConvF(6.40,6.40,6.40); Crest factor: 4.0

900 MHz Muscle: $\sigma = 1.07$ mho/m $\epsilon_r = 55.6$ $\rho = 1.00$ g/cm³

Coarse: Dx = 15.0, Dy = 15.0, Dz = 10.0

Cube 5x5x7

SAR (1g): 0.0425 mW/g, SAR (10g): 0.0251 mW/g

Body SAR - Bottom of Laptop PC (LCD Display Closed)

Antenna Perpendicular to Planar Phantom (180°)

0.0 cm Separation Distance from Bottom of Laptop PC to Planar Phantom

Itronix IX260 Rugged Laptop PC with RIM 902 Mobitex Radio Modem

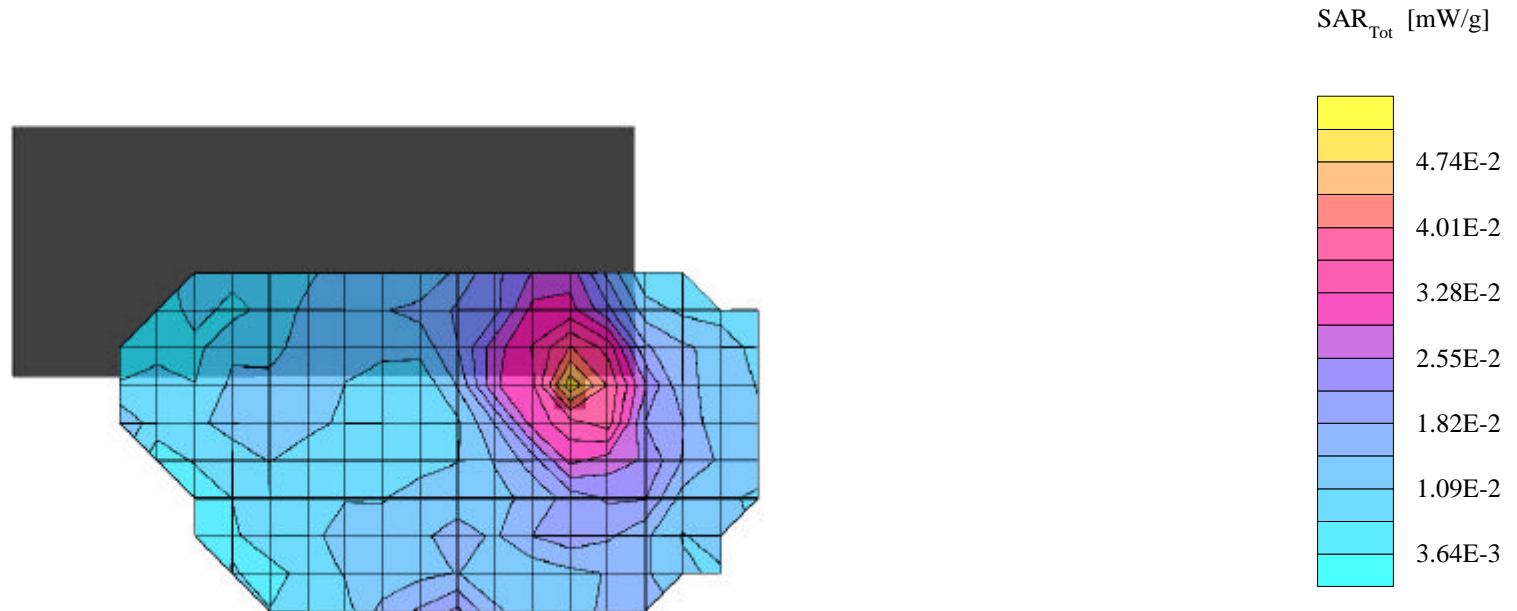
Modulated Carrier

Channel 721 [899.0 MHz]

Conducted Power: 33.1 dBm

Ambient Temp: 24.4°C; Fluid Temp: 23.6°C

Date Tested: June 11, 2003

Bottom Right Side of Laptop PC (Antenna Side)

Itronix Corporation FCC ID: KBCIX260RIM902

SAM Phantom; Flat Section; Position: (270°,180°)

Probe: ET3DV6 - SN1387; ConvF(6.40,6.40,6.40); Crest factor: 4.0

900 MHz Muscle: $\sigma = 1.07$ mho/m $\epsilon_r = 55.6$ $\rho = 1.00$ g/cm³

Coarse: Dx = 15.0, Dy = 15.0, Dz = 10.0

Body SAR - Bottom of Laptop PC (LCD Display Closed)

Antenna Perpendicular to Planar Phantom (180°)

0.0 cm Separation Distance from Bottom of Laptop PC to Planar Phantom

Itronix IX260 Rugged Laptop PC with RIM 902 Mobitex Radio Modem

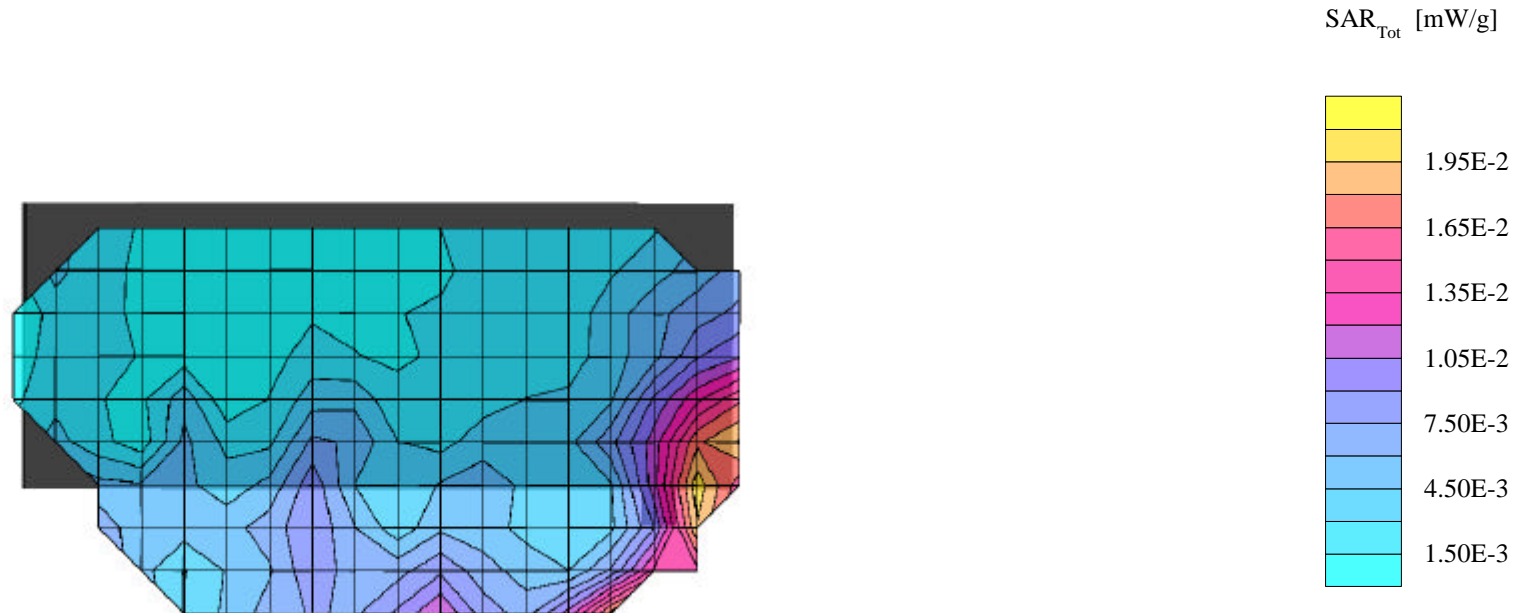
Modulated Carrier

Channel 721 [899.0 MHz]

Conducted Power: 33.1 dBm

Ambient Temp: 24.4°C; Fluid Temp: 23.6°C

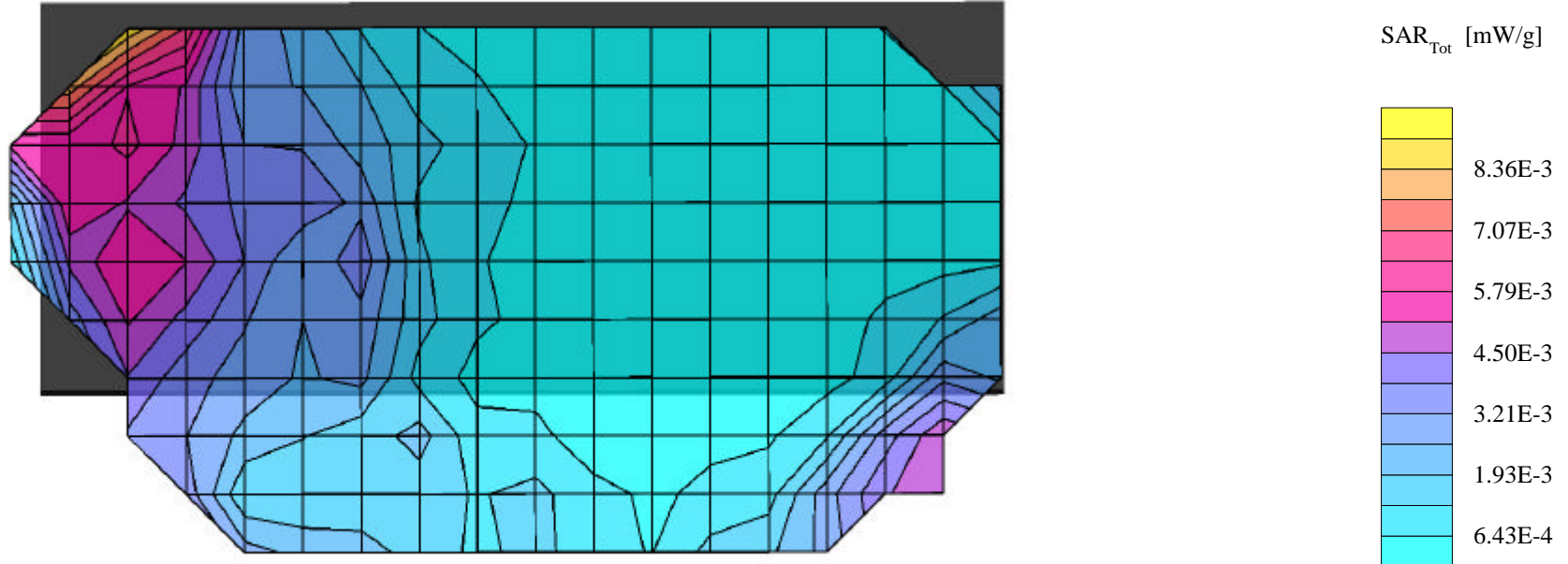
Date Tested: June 11, 2003

Coarse scan to show whole area of Bottom Right Side of Laptop PC (Antenna Side)

Itronix Corporation FCC ID: KBCIX260RIM902

SAM Phantom; Flat Section; Position: (270°,0°)
Probe: ET3DV6 - SN1387; ConvF(6.40,6.40,6.40); Crest factor: 4.0
900 MHz Muscle: $\sigma = 1.07$ mho/m $\epsilon_r = 55.6$ $\rho = 1.00$ g/cm³
Coarse: Dx = 15.0, Dy = 15.0, Dz = 10.0

Body SAR - Bottom of Laptop PC (LCD Display Closed)
Antenna Perpendicular to Planar Phantom (180°)
0.0 cm Separation Distance from Bottom of Laptop PC to Planar Phantom
Itronix IX260 Rugged Laptop PC with RIM 902 Mobitex Radio Modem
Modulated Carrier
Channel 721 [899.0 MHz]
Conducted Power: 33.1 dBm
Ambient Temp: 24.4°C; Fluid Temp: 23.6°C
Date Tested: June 11, 2003

Coarse scan to show Bottom Left Side of Laptop PC (Opposite Side to Antenna)

Itronix Corporation FCC ID: KBCIX260RIM902

SAM Phantom; Flat Section; Position: (180°,180°)

Probe: ET3DV6 - SN1387; ConvF(6.40,6.40,6.40); Crest factor: 4.0

900 MHz Muscle: $\sigma = 1.07$ mho/m $\epsilon_r = 55.9$ $\rho = 1.00$ g/cm³

Coarse: Dx = 15.0, Dy = 15.0, Dz = 10.0

Cube 5x5x7

SAR (1g): 0.377 mW/g, SAR (10g): 0.247 mW/g

Body SAR - Right Side of Laptop PC (LCD Display Closed) - Antenna Stowed

1.5 cm Separation Distance from Antenna to Planar Phantom

Itronix IX260 Rugged Laptop PC with RIM 902 Mobitex Radio Modem

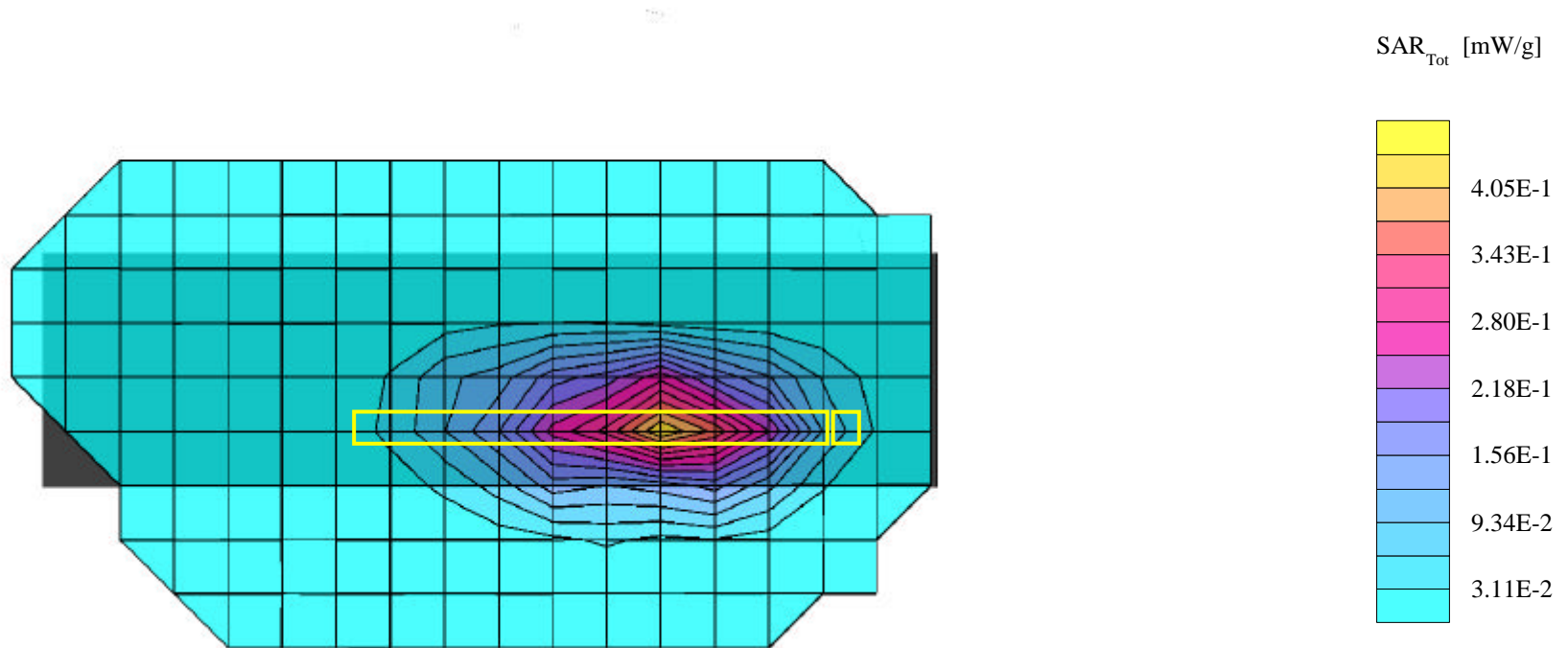
Modulated Carrier

Channel 721 [899.0 MHz]

Conducted Power: 33.1 dBm

Ambient Temp: 24.4°C; Fluid Temp: 23.6°C

Date Tested: June 11, 2003

Right Side of Laptop PC (Antenna Side)

Itronix Corporation FCC ID: KBCIX260RIM902

SAM Phantom; Flat Section; Position: (270°,180°)

Probe: ET3DV6 - SN1387; ConvF(6.40,6.40,6.40); Crest factor: 4.0

900 MHz Muscle: $\sigma = 1.07$ mho/m $\epsilon_r = 55.9$ $\rho = 1.00$ g/cm³

Coarse: Dx = 15.0, Dy = 15.0, Dz = 10.0

Cube 5x5x7

SAR (1g): 0.918 mW/g, SAR (10g): 0.588 mW/g

Body SAR - Right Side of Laptop PC (LCD Display Closed) - Antenna Extended

1.5 cm Separation Distance from Antenna to Planar Phantom

Itronix IX260 Rugged Laptop PC with RIM 902 Mobitex Radio Modem

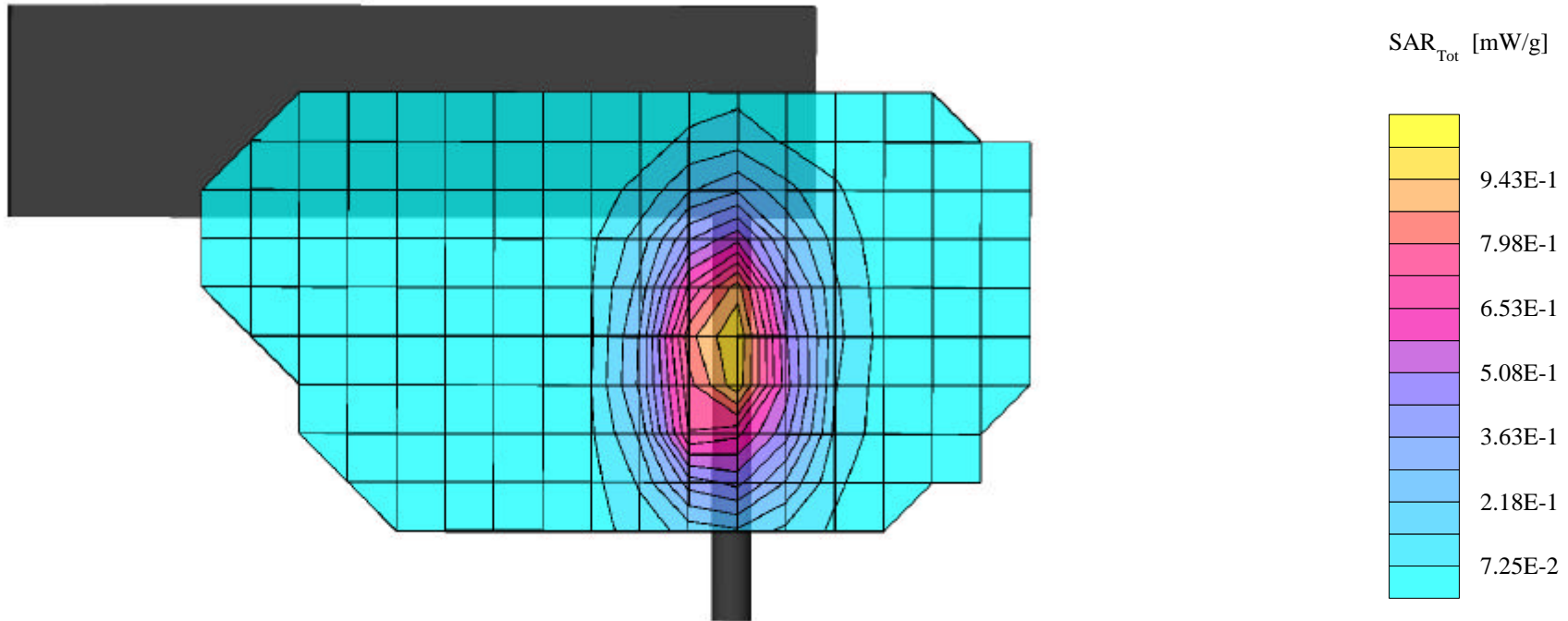
Modulated Carrier

Channel 721 [899.0 MHz]

Conducted Power: 33.1 dBm

Ambient Temp: 24.4°C; Fluid Temp: 23.6°C

Date Tested: June 11, 2003

Right Side of Laptop PC (Antenna Side)

Itronix Corporation FCC ID: KBCIX260RIM902

SAM Phantom; Flat Section; Position: (270°,180°)

Probe: ET3DV6 - SN1387; ConvF(6.40,6.40,6.40); Crest factor: 4.0

900 MHz Muscle: $\sigma = 1.07$ mho/m $\epsilon_r = 55.9$ $\rho = 1.00$ g/cm³

Coarse: Dx = 15.0, Dy = 15.0, Dz = 10.0

Body SAR - Right Side of Laptop PC (LCD Display Closed) - Antenna Extended

1.5 cm Separation Distance from Antenna to Planar Phantom

Itronix IX260 Rugged Laptop PC with RIM 902 Mobitex Radio Modem

Modulated Carrier

Channel 721 [899.0 MHz]

Conducted Power: 33.1 dBm

Ambient Temp: 24.4°C; Fluid Temp: 23.6°C

Date Tested: June 11, 2003

Coarse scan to show whole area of Right Side of Laptop PC (Antenna Side)