

Test Report Serial No.:	022305KBC-T618-E24C/E15B	Issue 1
Test Date(s):	30th March - 19th April, 2005	
Test Type(s):	FCC §2, §15.247, §22H, §24E	IC RSS-210/132/133
Lab Registration(s):	FCC #714830	IC Lab File #3874

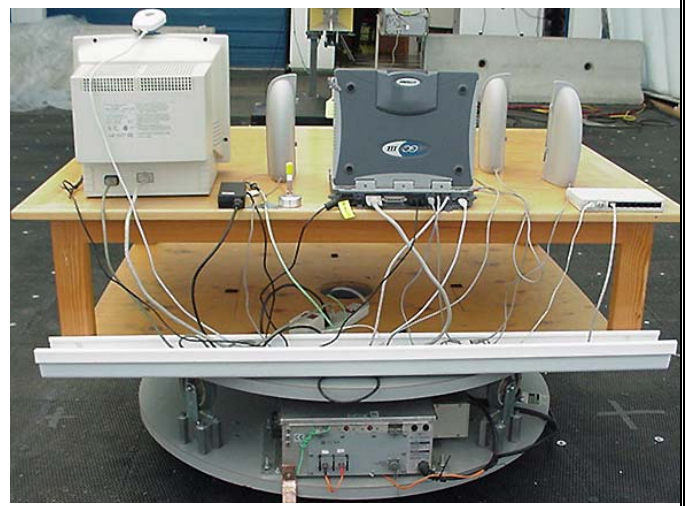
C.7. SETUP PHOTOGRAPHS


Photograph C.7-1 - Horizontal Bilog Receive Antenna with DUT



Photograph C.7-2 - Front of Radiated Emission Setup

Photograph C.7-3 - Back of Radiated Emission Setup



Applicant:	Itronix Corporation	Model:	IX260PROA580BT	FCC ID:	KBCIX260PROA580BT	IC ID:	1943A-IX260Pf	
Rugged Laptop PC with Sierra Wireless AirCard 580 Dual-Band CDMA Modem and Cirronet BT2022 Bluetooth								
2005 Celltech Labs Inc.		This document is not to be reproduced in whole or in part without the written permission of Celltech Labs Inc.					24 of 51	

Test Report Serial No.:	022305KBC-T618-E24C/E15B	Issue 1
Test Date(s):	30th March - 19th April, 2005	
Test Type(s):	FCC §2, §15.247, §22H, §24E	IC RSS-210/132/133
Lab Registration(s):	FCC #714830	IC Lab File #3874

D.7. SETUP PHOTOGRAPHS

Photograph D.7-1 - Horizontal 3115 Horn & LNA with DUT



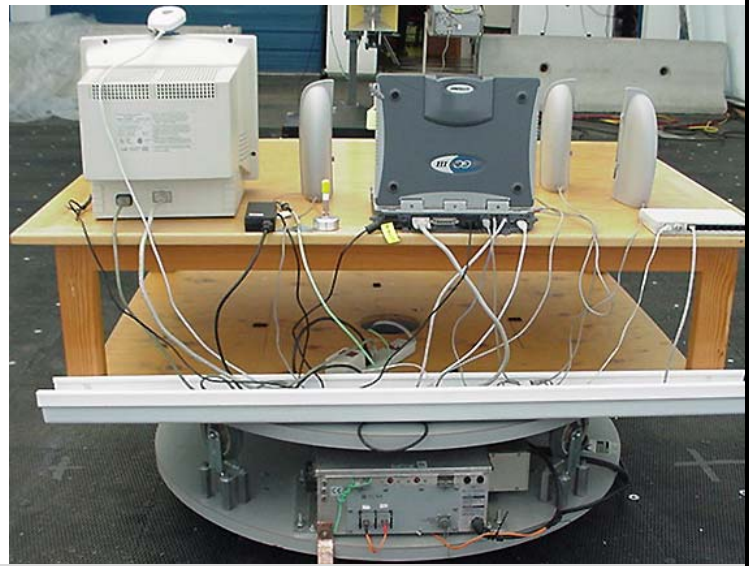
Photograph D.7-2 - Vertical 3115 Horn & LNA with DUT




Photograph D.7-3 - Front of Radiated Emission Setup



Photograph D.7-4 - Back of Radiated Emission Setup



Applicant:	Itronix Corporation	Model:	IX260PROA580BT	FCC ID:	KBCIX260PROA580BT	IC ID:	1943A-IX260Pf
Rugged Laptop PC with Sierra Wireless AirCard 580 Dual-Band CDMA Modem and Cirronet BT2022 Bluetooth							
2005 Celltech Labs Inc. This document is not to be reproduced in whole or in part without the written permission of Celltech Labs Inc.							30 of 51

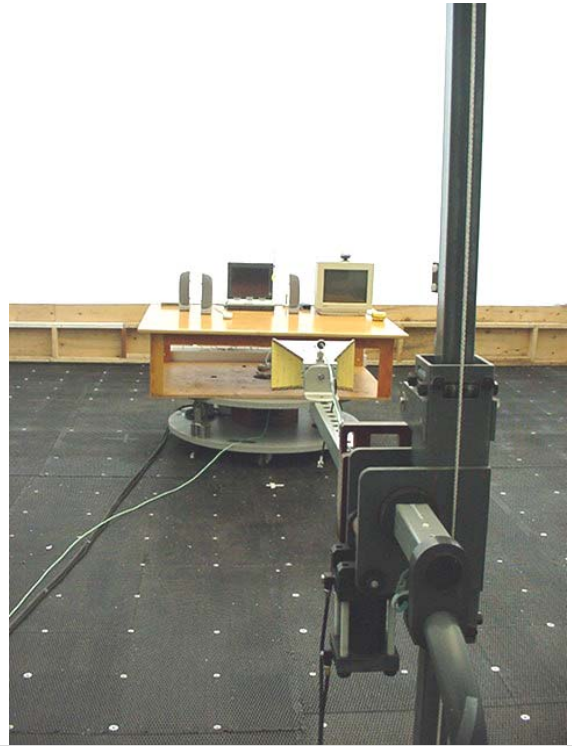
Test Report Serial No.:	022305KBC-T618-E24C/E15B	Issue 1
Test Date(s):	30th March - 19th April, 2005	
Test Type(s):	FCC §2, §15.247, §22H, §24E	IC RSS-210/132/133
Lab Registration(s):	FCC #714830	IC Lab File #3874

E.7. SETUP PHOTOGRAPHS

Photograph E.7-1 - Horizontal Horn Receive Antenna with DUT



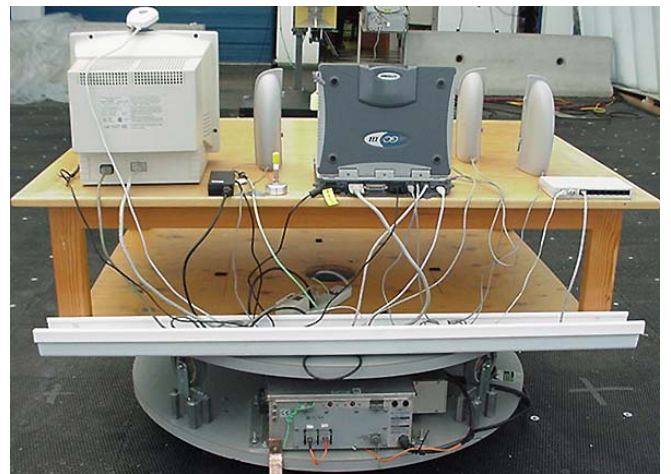
Photograph E.7-2 - Vertical Horn Receive Antenna with DUT




Photograph E.7-3 - Front of Radiated Emission Setup



Photograph E.7-4 - Back of Radiated Emission Setup



Applicant:	Itronix Corporation	Model:	IX260PROA580BT	FCC ID:	KBCIX260PROA580BT	IC ID:	1943A-IX260Pf
Rugged Laptop PC with Sierra Wireless AirCard 580 Dual-Band CDMA Modem and Cirronet BT2022 Bluetooth							
2005 Celltech Labs Inc. This document is not to be reproduced in whole or in part without the written permission of Celltech Labs Inc.							35 of 51

Test Report Serial No.:	022305KBC-T618-E24C/E15B	Issue 1
Test Date(s):	30th March - 19th April, 2005	
Test Type(s):	FCC §2, §15.247, §22H, §24E	IC RSS-210/132/133
Lab Registration(s):	FCC #714830	IC Lab File #3874

F.7. SETUP PHOTOGRAPHS

Photograph F.7-1 - Horizontal 3115 Horn & LNA with DUT



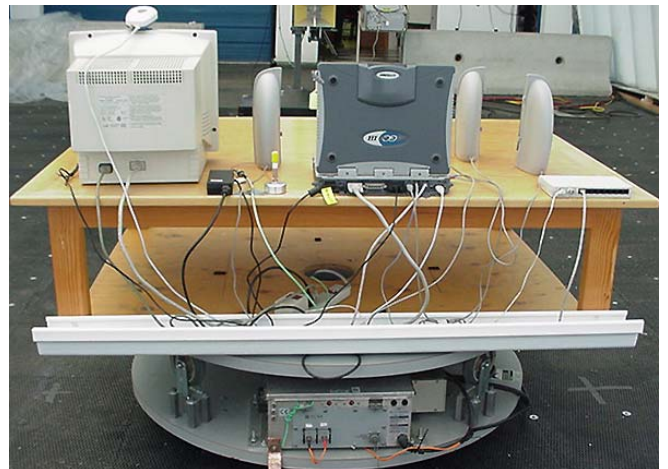
Photograph F.7-2 - Vertical 3115 Horn & LNA with DUT




Photograph F.7-3 - Front of Radiated Emission Setup



Photograph F.7-4 - Back of Radiated Emission Setup



Applicant:	Itronix Corporation	Model:	IX260PROA580BT	FCC ID:	KBCIX260PROA580BT	IC ID:	1943A-IX260Pf	
Rugged Laptop PC with Sierra Wireless AirCard 580 Dual-Band CDMA Modem and Cirronet BT2022 Bluetooth								
2005 Celltech Labs Inc. This document is not to be reproduced in whole or in part without the written permission of Celltech Labs Inc.							41 of 51	