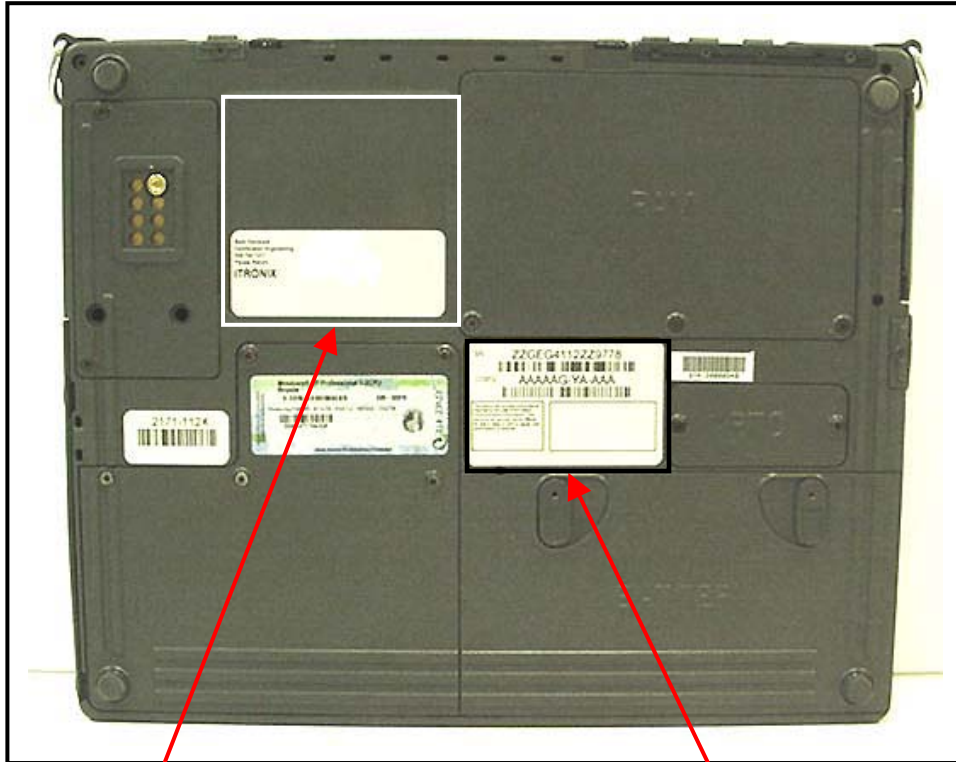


**FCC ID LABEL & LOCATION**

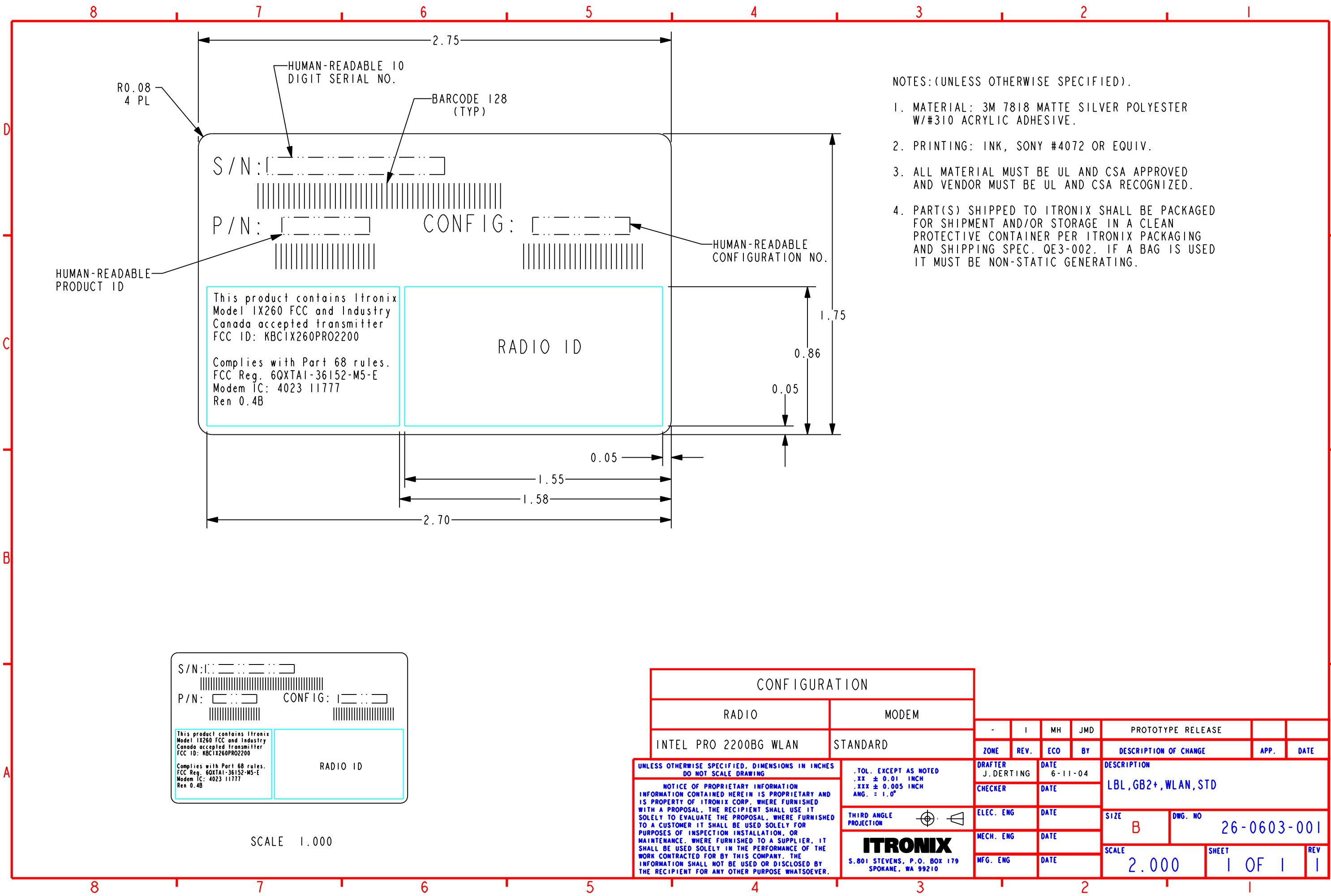
**LABELING REQUIREMENTS PER §2.925**

The label(s) shall be permanently affixed at a conspicuous location on the device.

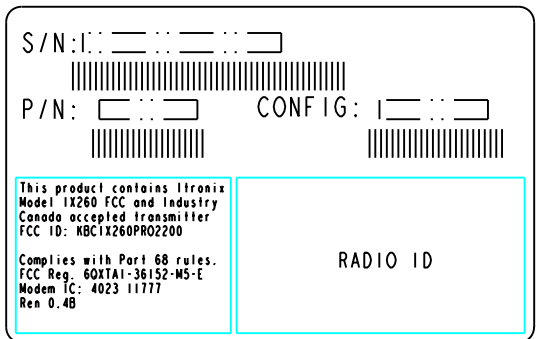


SEE NEXT PAGE(S) FOR  
PART 15(B) DoC LABEL

SEE NEXT PAGE(S) FOR  
PART 15(C) FCC ID LABEL



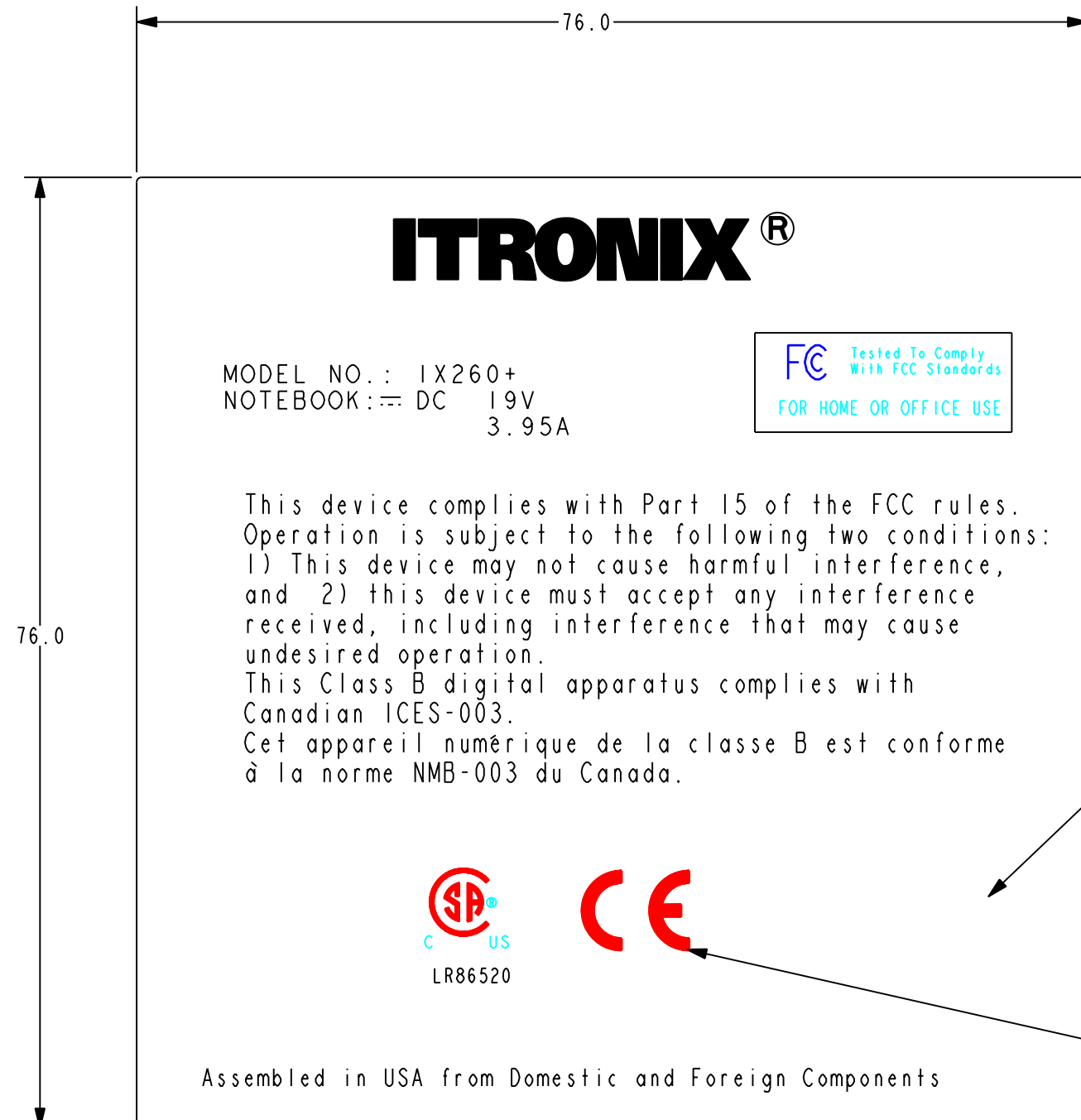
- NOTES: (UNLESS OTHERWISE SPECIFIED).
1. MATERIAL: 3M 7818 MATTE SILVER POLYESTER W/#310 ACRYLIC ADHESIVE.
  2. PRINTING: INK, SONY #4072 OR EQUIV.
  3. ALL MATERIAL MUST BE UL AND CSA APPROVED AND VENDOR MUST BE UL AND CSA RECOGNIZED.
  4. PART(S) SHIPPED TO ITRONIX SHALL BE PACKAGED FOR SHIPMENT AND/OR STORAGE IN A CLEAN PROTECTIVE CONTAINER PER ITRONIX PACKAGING AND SHIPPING SPEC. QE3-002. IF A BAG IS USED IT MUST BE NON-STATIC GENERATING.



SCALE 1.000

CONFIGURATION		- I MH JMD				PROTOTYPE RELEASE		
RADIO	MODEM	ZONE	REV.	ECO	BY	DESCRIPTION OF CHANGE	APP.	DATE
INTEL PRO 2200BG WLAN	STANDARD							
<small>UNLESS OTHERWISE SPECIFIED, DIMENSIONS IN INCHES DO NOT SCALE DRAWING</small> <small>NOTICE OF PROPRIETARY INFORMATION INFORMATION CONTAINED HEREIN IS PROPRIETARY AND IS PROPERTY OF ITRONIX CORP. WHERE FURNISHED WITH A PROPOSAL, THE RECIPIENT SHALL USE IT SOLELY TO EVALUATE THE PROPOSAL, WHERE FURNISHED TO A CUSTOMER IT SHALL BE USED SOLELY FOR PURPOSES OF INSPECTION INSTALLATION, OR MAINTENANCE. WHERE FURNISHED TO A SUPPLIER, IT SHALL BE USED SOLELY IN THE PERFORMANCE OF THE WORK CONTRACTED FOR BY THIS COMPANY. THE INFORMATION SHALL NOT BE USED OR DISCLOSED BY THE RECIPIENT FOR ANY OTHER PURPOSE WHATSOEVER.</small>		<small>.TOL. EXCEPT AS NOTED</small> <small>.XX ± 0.01 INCH</small> <small>.XXX ± 0.005 INCH</small> <small>ANG. = 1.0°</small>		<small>DRAFTER</small> J.DERTING		<small>DATE</small> 6-11-04		<small>DESCRIPTION</small> LBL, GB2+, WLAN, STD
		<small>THIRD ANGLE PROJECTION</small>		<small>ELEC. ENG</small> <small>MECH. ENG</small> <small>MFG. ENG</small>		<small>DATE</small> <small>DATE</small> <small>DATE</small>		<small>SIZE</small> B
<b>ITRONIX</b> <small>S. 801 STEVENS, P.O. BOX 179            SPOKANE, WA 99210</small>		<small>SCALE</small> 2.000		<small>SHEET</small> 1 OF 1		<small>REV</small> 1		

8 7 6 5 4 3 2 1



NOTES: (UNLESS OTHERWISE SPECIFIED).

1. MATERIAL: LEXAN 8A35, TOTAL THICKNESS WITH 3M 467MP PSA TO BE .8MM, MAY LAMINATE TO ACHIEVE FINAL THICKNESS.
2. TEXT COLOR: WHITE.
3. BACKGROUND TO MATCH PANTONE 432U (DARK GRAY).
4. ALL MATERIAL MUST BE UL AND CSA APPROVED AND VENDOR MUST BE UL AND CSA RECOGNIZED.
5. PART(S) SHIPPED TO ITRONIX SHALL BE PACKAGED FOR SHIPMENT AND/OR STORAGE IN A CLEAN PROTECTIVE CONTAINER PER ITRONIX PACKAGING AND SHIPPING SPEC.QE3-002. IF A BAG IS USED IT MUST BE NON-STATIC GENERATING.

UNLESS OTHERWISE SPECIFIED, DIMENSIONS IN MILLIMETERS  
DO NOT SCALE DRAWING

NOTICE OF PROPRIETARY INFORMATION  
INFORMATION CONTAINED HEREIN IS PROPRIETARY AND IS PROPERTY OF ITRONIX CORP. WHERE FURNISHED WITH A PROPOSAL, THE RECIPIENT SHALL USE IT SOLELY TO EVALUATE THE PROPOSAL, WHERE FURNISHED TO A CUSTOMER IT SHALL BE USED SOLELY FOR PURPOSES OF INSPECTION INSTALLATION, OR MAINTENANCE. WHERE FURNISHED TO A SUPPLIER, IT SHALL BE USED SOLELY IN THE PERFORMANCE OF THE WORK CONTRACTED FOR BY THIS COMPANY. THE INFORMATION SHALL NOT BE USED OR DISCLOSED BY THE RECIPIENT FOR ANY OTHER PURPOSE WHATSOEVER.

.TOL. EXCEPT AS NOTED  
X ± 0.5 MM  
X.X ± 0.25 MM  
X.XX ± 0.125 MM  
ANG. = 1.0°

THIRD ANGLE PROJECTION

**ITRONIX**  
S.801 STEVENS, P.O. BOX 179  
SPOKANE, WA 99210

-	I	MH	JMD	PROTOTYPE			
ZONE	REV.	ECO	BY	DESCRIPTION OF CHANGE	APP.	DATE	
DRAFTER J.DERTING	DATE 6-30-04	CHECKER	DATE	DESCRIPTION LABEL, IX260+, FCC PART 15			
ELEC. ENG	DATE	MECH. ENG	DATE	SIZE B	DWG. NO 26-0622-001		
MFG. ENG	DATE	SCALE 2.000		SHEET 1 OF 1	REV 1		

D  
C  
B  
A

D  
C  
B  
A

8 7 6 5 4 3 2 1