



4.3 6dB BANDWIDTH MEASUREMENT

4.3.1 LIMITS OF 6dB BANDWIDTH MEASUREMENT

The minimum of 6dB Bandwidth Measurement is 0.5 MHz.

4.3.2 TEST INSTRUMENTS

Description & Manufacturer	Model No.	Serial No.	Calibrated Until
R&S SPECTRUM ANALYZER	FSEK30	100049	Aug. 12, 2004

NOTE: The calibration interval of the above test instruments is 12 months and the calibrations are traceable to NML/ROC and NIST/USA.

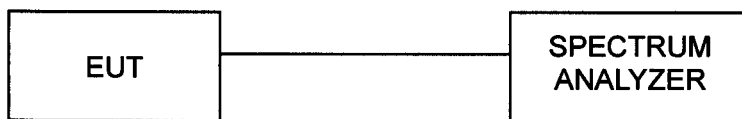
4.3.3 TEST PROCEDURE

The transmitter output was connected to the spectrum analyzer through an attenuator. The bandwidth of the fundamental frequency was measured by spectrum analyzer with 100 kHz RBW and 100 kHz VBW. The 6 dB bandwidth is defined as the total spectrum the power of which is higher than peak power minus 6 dB.

4.3.4 DEVIATION FROM TEST STANDARD

No deviation

4.3.5 TEST SETUP



4.3.6 EUT OPERATING CONDITIONS

The software provided by client to enable the EUT under transmission condition continuously at lowest, middle and highest channel frequencies individually.



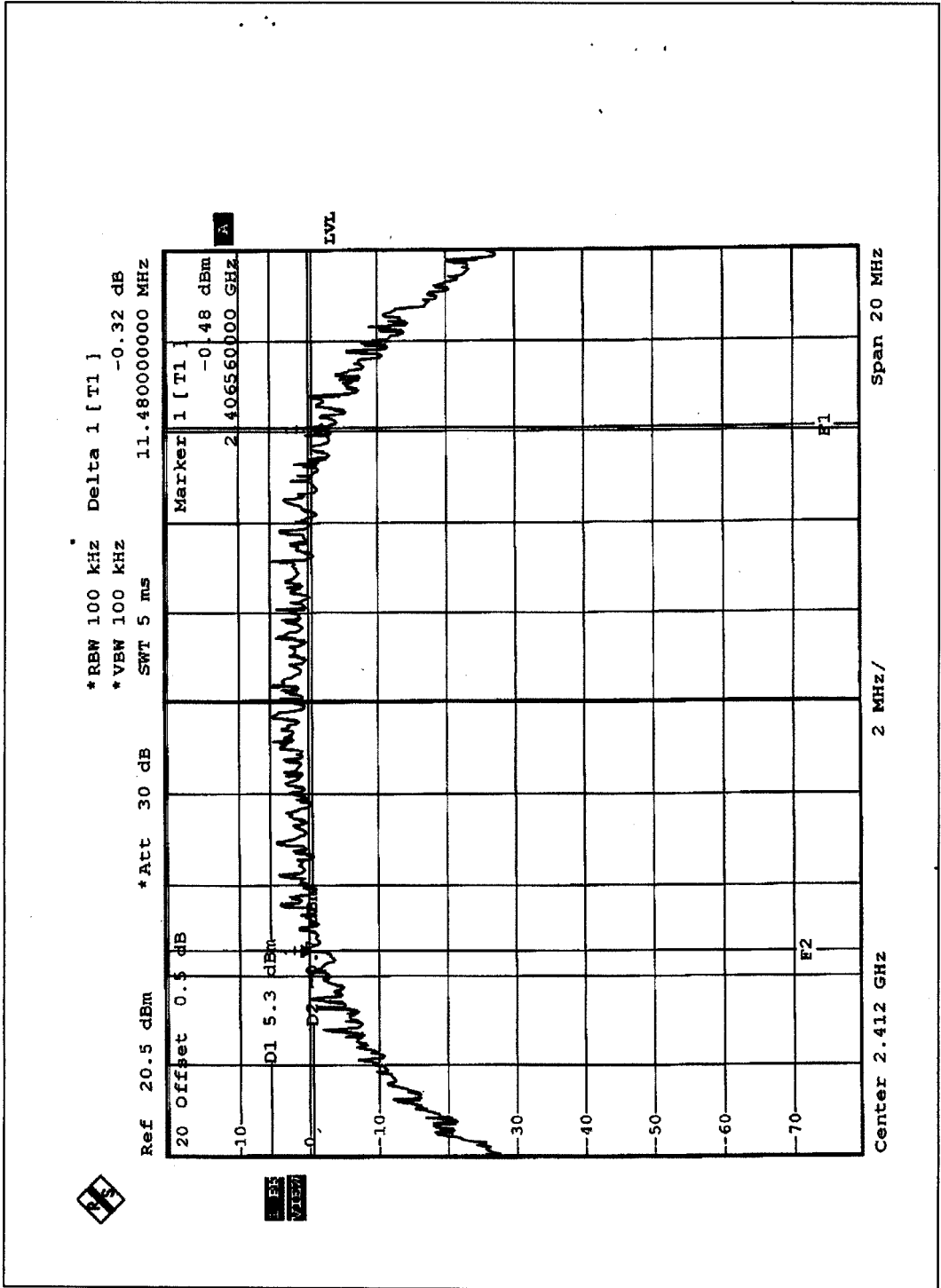
4.3.7 TEST RESULTS (A)

EUT	Atheros 11g Mini-PCI Adapter	MODEL	NL-3054MP Plus Aries2
INPUT POWER (SYSTEM)	120Vac, 60 Hz	ENVIRONMENTAL CONDITIONS	20deg. C, 60%RH, 991 hPa
TESTED BY: Jun Wu			

CHANNEL	CHANNEL FREQUENCY (MHz)	6dB BANDWIDTH (MHz)	MINIMUM LIMIT (MHz)	PASS/FAIL
1	2412	11.48	0.5	PASS
6	2437	11.48	0.5	PASS
11	2462	11.08	0.5	PASS



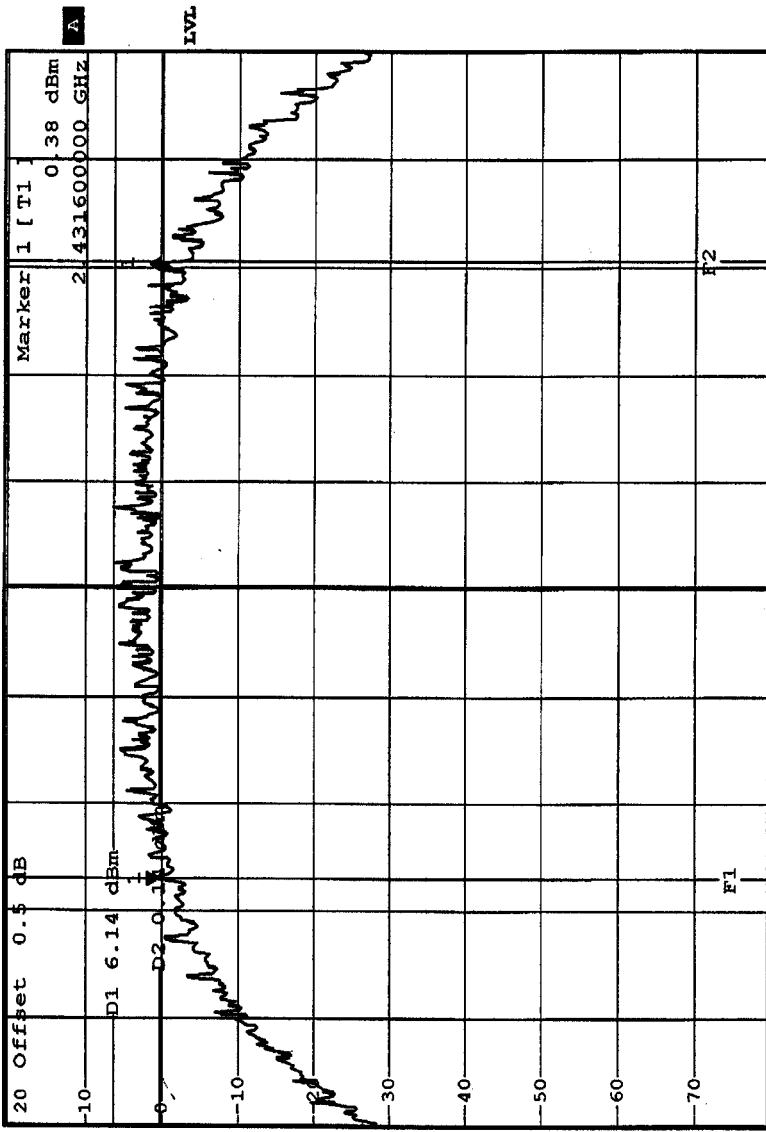
CH1





CH6

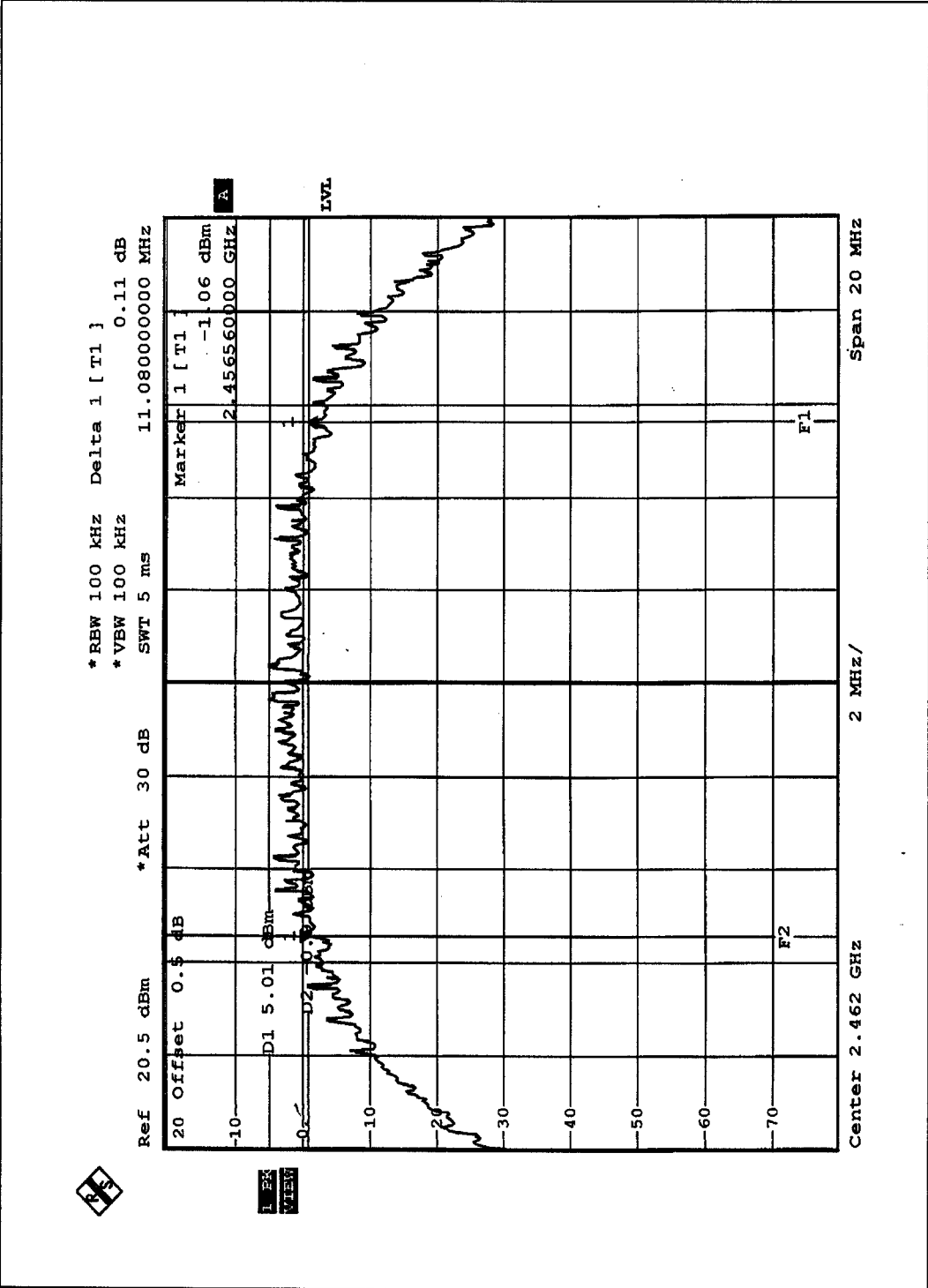
*RBW 100 kHz Delta 1 [T1] 1.14 dB
*VBW 100 kHz
*Att 30 dB
*SWT 5 ms
Ref 20.5 dBm
11.480000000 MHz



VIEW



CH11





4.3.8 TEST RESULTS (B)

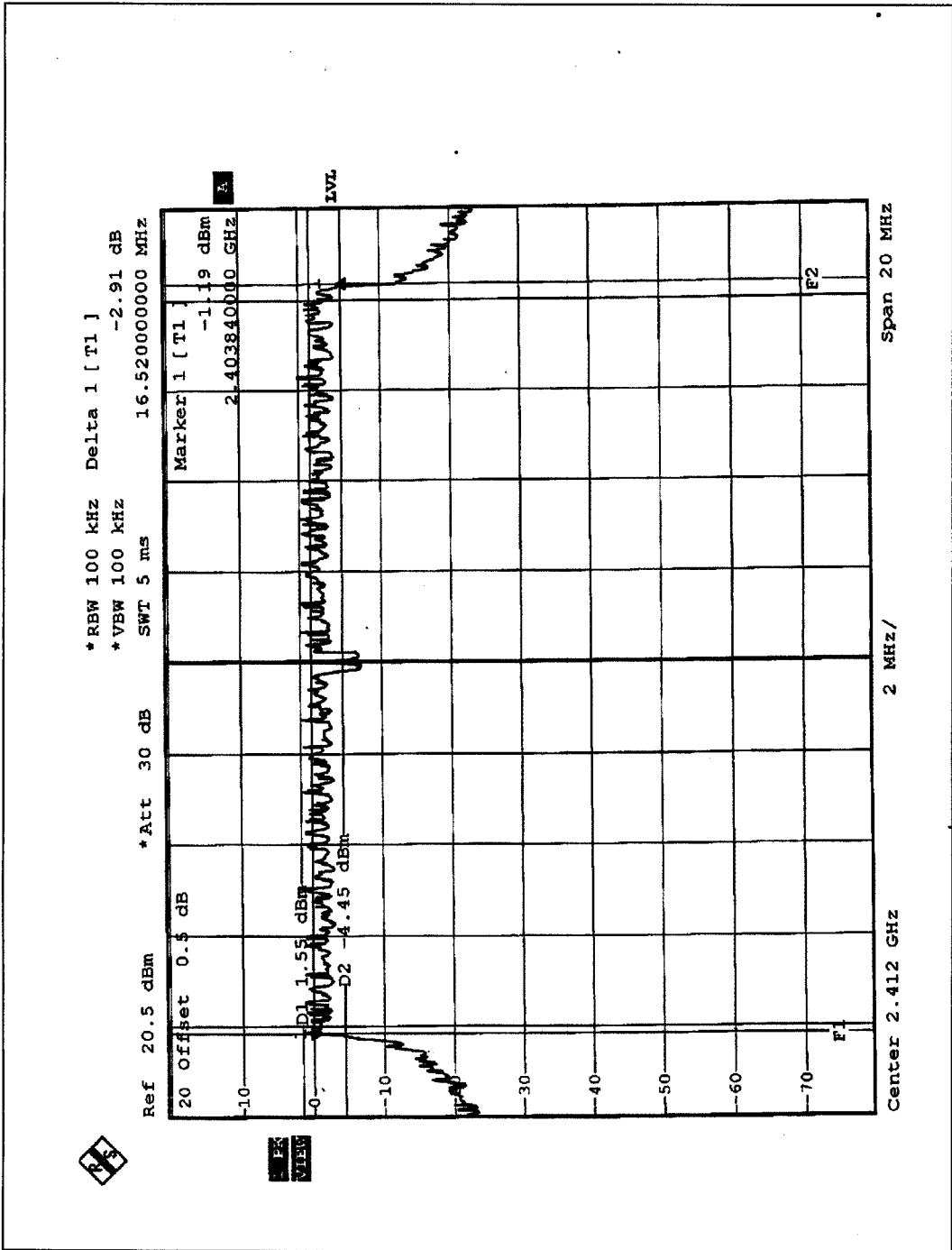
Normal mode:

EUT	Atheros 11g Mini-PCI Adapter	MODEL	NL-3054MP Plus Aries2
INPUT POWER (SYSTEM)	120Vac, 60 Hz	ENVIRONMENTAL CONDITIONS	20deg. C, 60%RH, 991 hPa
TESTED BY: Jun Wu			

CHANNEL	CHANNEL FREQUENCY (MHz)	6dB BANDWIDTH (MHz)	MINIMUM LIMIT (MHz)	PASS/FAIL
1	2412	16.52	0.5	PASS
6	2437	16.56	0.5	PASS
11	2462	16.40	0.5	PASS

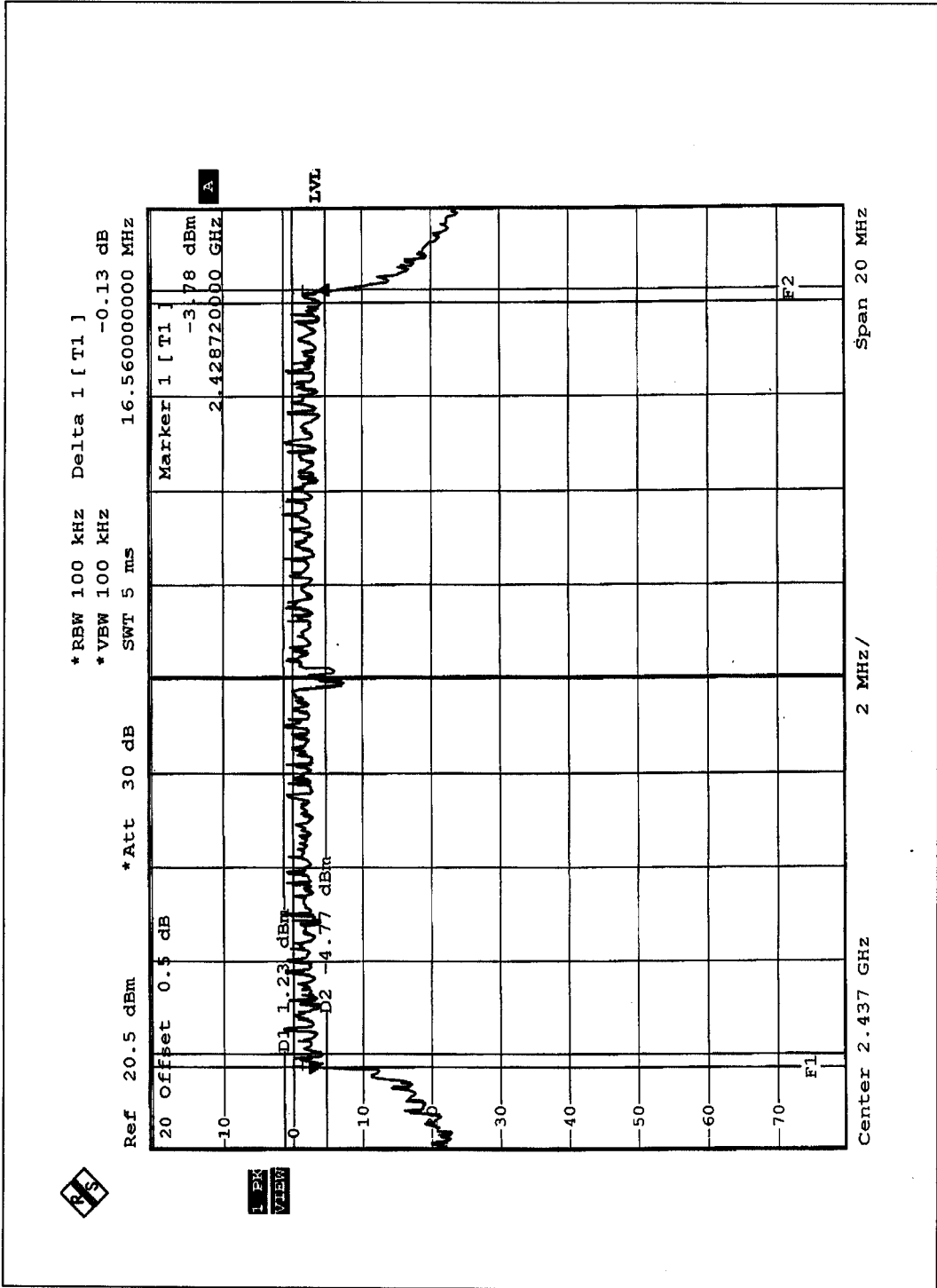


CH1



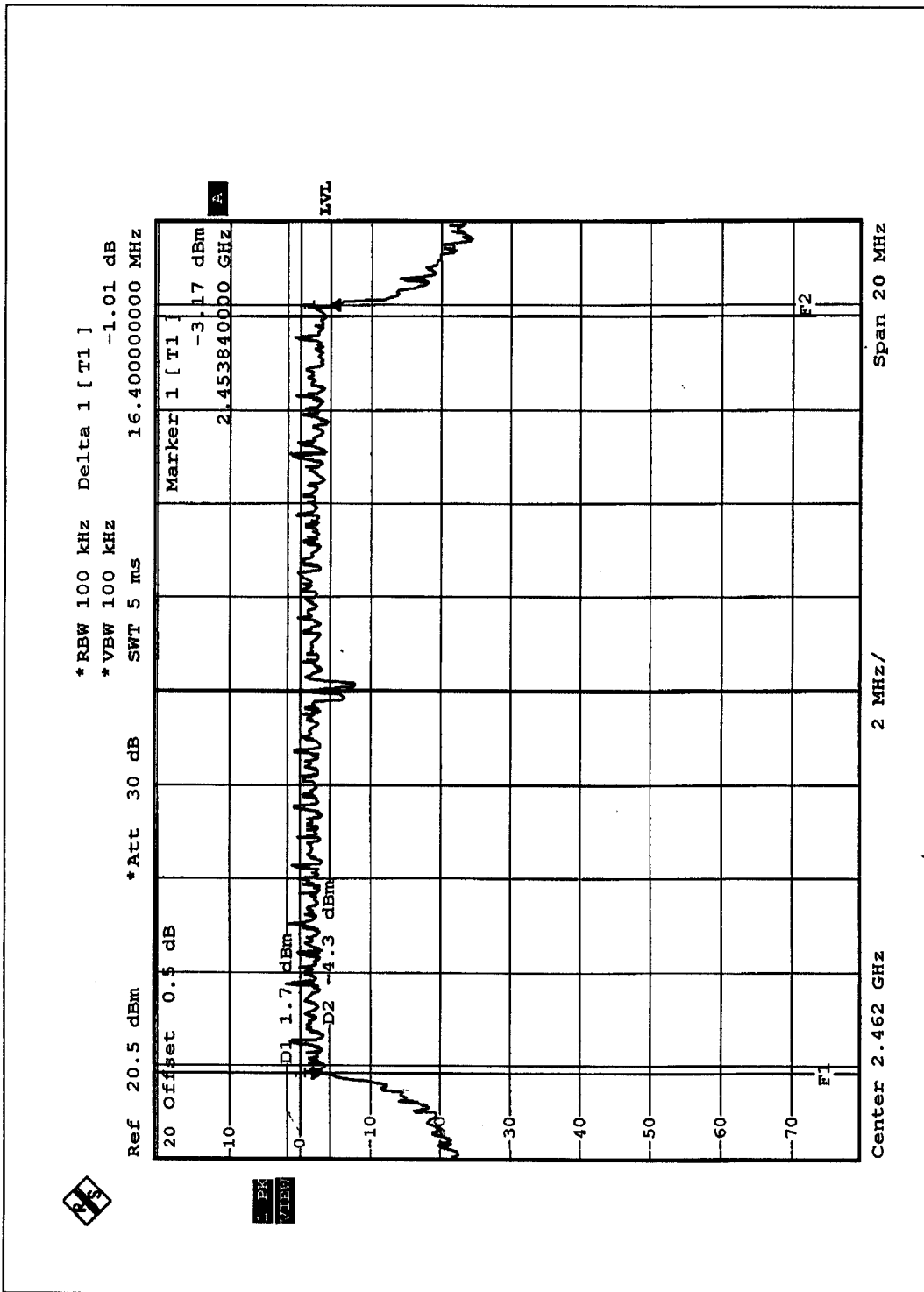


CH6





CH11



PK VIEW



Turbo mode:

EUT	Atheros 11g Mini-PCI Adapter	MODEL	NL-3054MP Plus Aries2
INPUT POWER (SYSTEM)	120Vac, 60 Hz	ENVIRONMENTAL CONDITIONS	20deg. C, 60%RH, 991 hPa
TESTED BY: Jun Wu			

CHANNEL	CHANNEL FREQUENCY (MHz)	6dB BANDWIDTH (MHz)	MINIMUM LIMIT (MHz)	PASS/FAIL
6	2437	32.64	0.5	PASS



CH6

