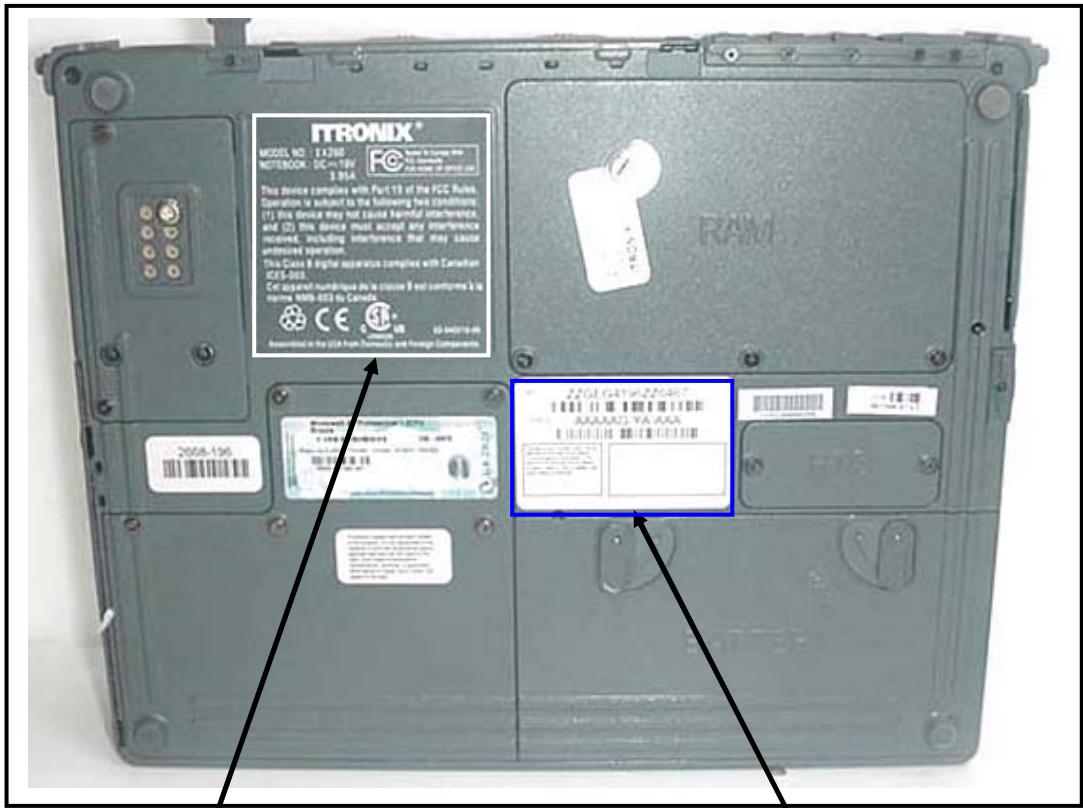


FCC ID LABEL & LOCATION

LABELING REQUIREMENTS PER §2.925

The label(s) shall be permanently affixed at a conspicuous location on the device.



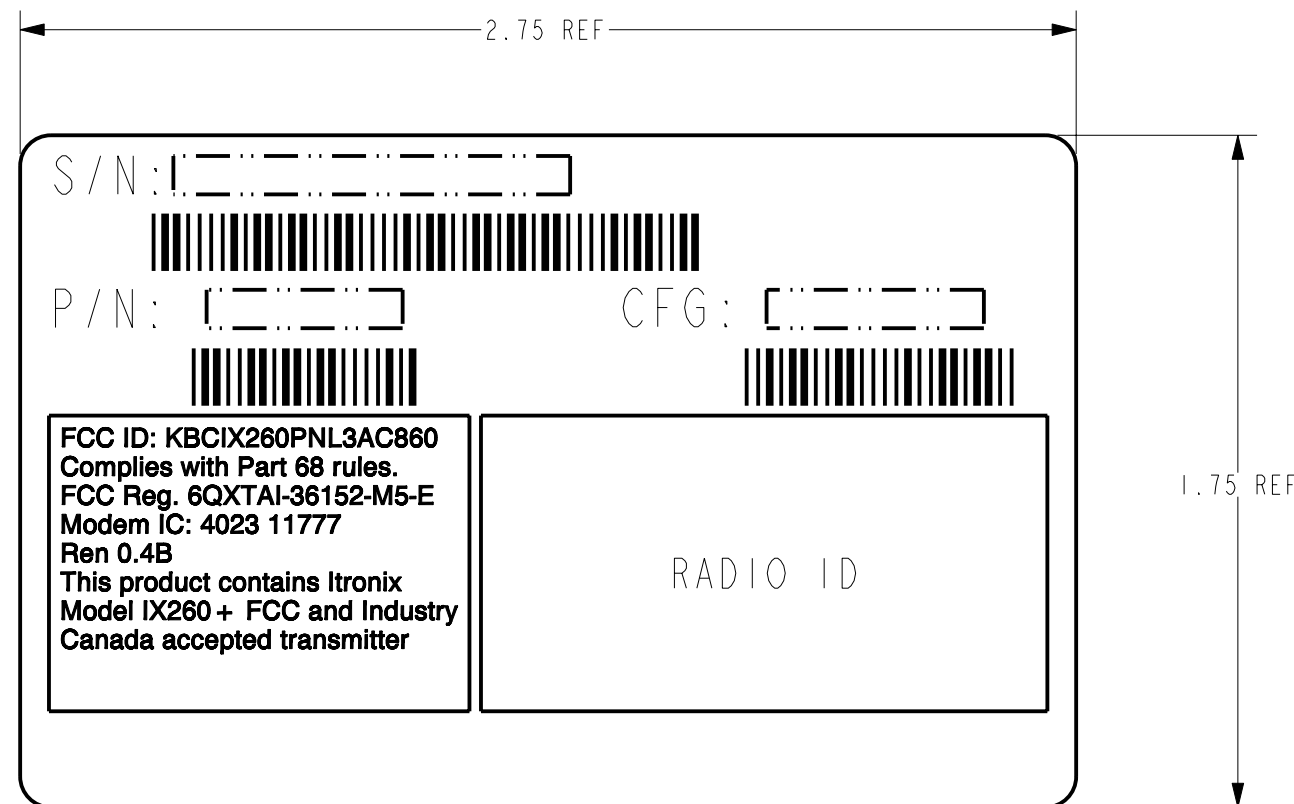
**SEE NEXT PAGE(S) FOR
FCC Part 15(B) DoC LABEL**

**SEE NEXT PAGE(S)
FOR FCC ID LABEL**

MODEL	PART NUMBER	OBJECT NAME	REV	VER	REL
	26-0710-001	LBL-AC860-GB3-SENAO	***	***	***
DRAWING	26-0710-001	26-0295-001.01.LBL-860-GB3-SN	-		

NOTES: (UNLESS OTHERWISE SPECIFIED).

- FOR LABEL MANUFACTURE SEE ITRONIX DRAWING 26-0637-000.
- THIS PART/ASSEMBLY SHALL MEET ROHS COMPLIANCE REQUIREMENTS AS SPECIFIED IN: DIRECTIVE 2002/95/EC OF THE EUROPEAN PARLIAMENT AND OF THE COUNCIL OF 27 JANUARY 2003 ON THE RESTRICTION OF THE USE OF CERTAIN HAZARDOUS SUBSTANCES IN ELECTRICAL AND ELECTRONIC EQUIPMENT.
- PART(S) SHIPPED TO ITRONIX SHALL BE PACKAGED FOR SHIPMENT AND/OR STORAGE IN A CLEAN PROTECTIVE CONTAINER PER ITRONIX PACKAGING AND SHIPPING SPEC. QAW1.05.023 IF A BAG IS USED IT MUST BE NON-STATIC GENERATING.



CONFIGURATION	
RADIO	MODEM
AC860	STANDARD
SENAO	

ZONE	REV.	ECO	BY	DESCRIPTION OF CHANGE	APP.	DATE
-	I	MH	KM	PROTOTYPE RELEASE		
				DESCRIPTION		
				LBL, GB3, AC860, SENAO		
				SIZE	DWG. NO	
				B	26-0295-001R	
				SCALE	SHEET	
				2.000	1 OF 1	
					REV	
					I	

UNLESS OTHERWISE SPECIFIED, DIMENSIONS IN INCHES
DO NOT SCALE DRAWING

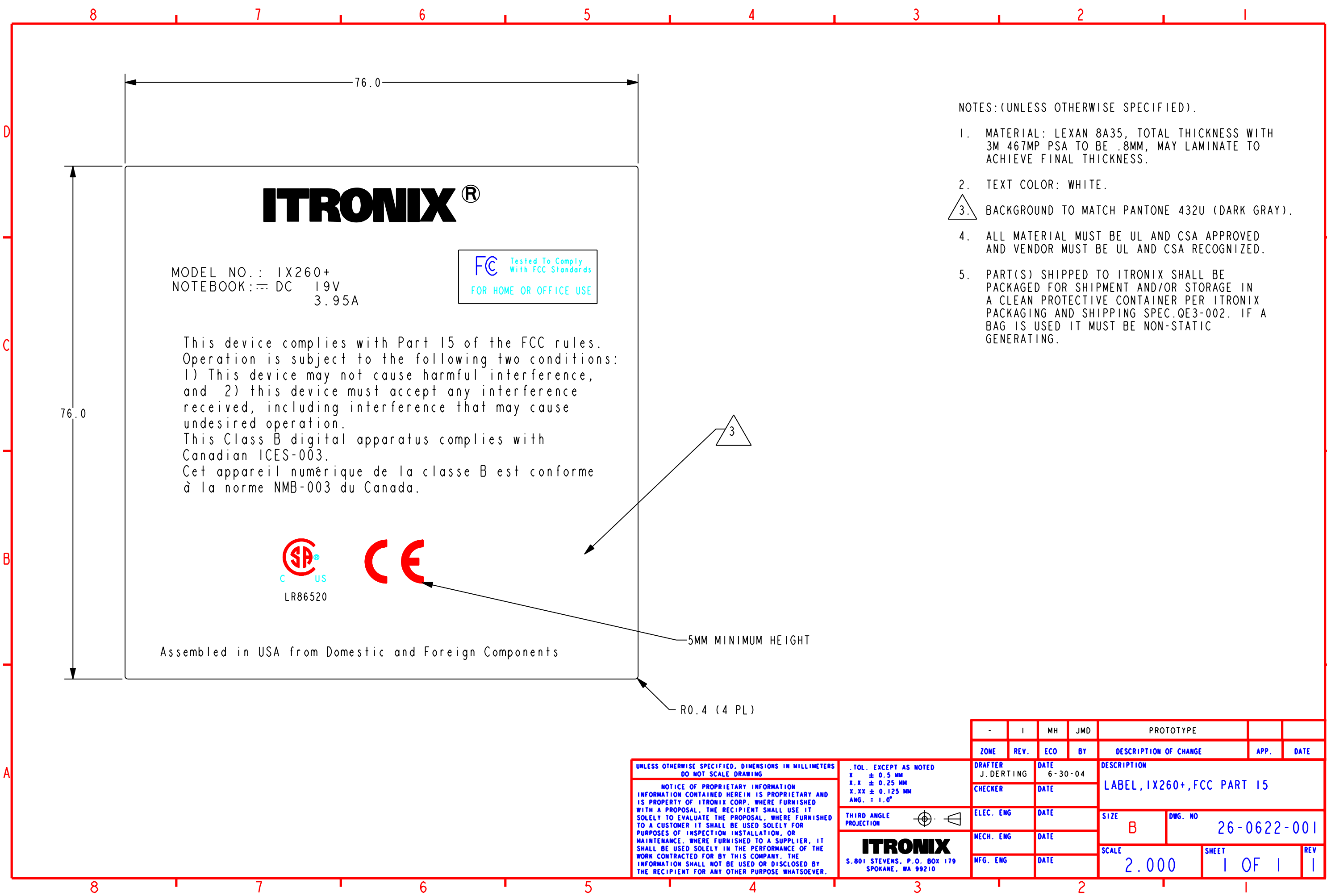
NOTICE OF PROPRIETARY INFORMATION
INFORMATION CONTAINED HEREIN IS PROPRIETARY AND
IS PROPERTY OF ITRONIX CORP. WHERE FURNISHED
WITH A PROPOSAL, THE RECIPIENT SHALL USE IT
SOLELY TO EVALUATE THE PROPOSAL, WHERE FURNISHED
TO A CUSTOMER IT SHALL BE USED SOLELY FOR
PURPOSES OF INSPECTION INSTALLATION, OR
MAINTENANCE. WHERE FURNISHED TO A SUPPLIER, IT
SHALL BE USED SOLELY IN THE PERFORMANCE OF THE
WORK CONTRACTED FOR BY THIS COMPANY. THE
INFORMATION SHALL NOT BE USED OR DISCLOSED BY
THE RECIPIENT FOR ANY OTHER PURPOSE WHATSOEVER.

.TOL. EXCEPT AS NOTED
.XX ± 0.01 INCH
.XXX ± 0.005 INCH
ANG. = 1.0°

THIRD ANGLE
PROJECTION

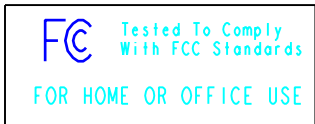
ITRONIX
S.801 STEVENS, P.O. BOX 179
SPOKANE, WA 99210

DRAFTER	DATE
K. MORDEN	8-21-06
CHECKER	DATE
ELEC. ENG	DATE
MECH. ENG	DATE
MFG. ENG	DATE



ITRONIX®

MODEL NO.: IX260+
 NOTEBOOK: DC 19V
 3.95A



This device complies with Part 15 of the FCC rules. Operation is subject to the following two conditions:
 1) This device may not cause harmful interference, and 2) this device must accept any interference received, including interference that may cause undesired operation.
 This Class B digital apparatus complies with Canadian ICES-003.
 Cet appareil numérique de la classe B est conforme à la norme NMB-003 du Canada.



Assembled in USA from Domestic and Foreign Components

NOTES: (UNLESS OTHERWISE SPECIFIED).

1. MATERIAL: LEXAN 8A35, TOTAL THICKNESS WITH 3M 467MP PSA TO BE .8MM, MAY LAMINATE TO ACHIEVE FINAL THICKNESS.
2. TEXT COLOR: WHITE.
3. BACKGROUND TO MATCH PANTONE 432U (DARK GRAY).
4. ALL MATERIAL MUST BE UL AND CSA APPROVED AND VENDOR MUST BE UL AND CSA RECOGNIZED.
5. PART(S) SHIPPED TO ITRONIX SHALL BE PACKAGED FOR SHIPMENT AND/OR STORAGE IN A CLEAN PROTECTIVE CONTAINER PER ITRONIX PACKAGING AND SHIPPING SPEC.QE3-002. IF A BAG IS USED IT MUST BE NON-STATIC GENERATING.



5MM MINIMUM HEIGHT

R0.4 (4 PL)

UNLESS OTHERWISE SPECIFIED, DIMENSIONS IN MILLIMETERS DO NOT SCALE DRAWING

NOTICE OF PROPRIETARY INFORMATION INFORMATION CONTAINED HEREIN IS PROPRIETARY AND IS PROPERTY OF ITRONIX CORP. WHERE FURNISHED WITH A PROPOSAL, THE RECIPIENT SHALL USE IT SOLELY TO EVALUATE THE PROPOSAL, WHERE FURNISHED TO A CUSTOMER IT SHALL BE USED SOLELY FOR PURPOSES OF INSPECTION INSTALLATION, OR MAINTENANCE. WHERE FURNISHED TO A SUPPLIER, IT SHALL BE USED SOLELY IN THE PERFORMANCE OF THE WORK CONTRACTED FOR BY THIS COMPANY. THE INFORMATION SHALL NOT BE USED OR DISCLOSED BY THE RECIPIENT FOR ANY OTHER PURPOSE WHATSOEVER.

.TOL. EXCEPT AS NOTED
 X ± 0.5 MM
 X.X ± 0.25 MM
 X.XX ± 0.125 MM
 ANG. = 1.0°

THIRD ANGLE PROJECTION

ITRONIX
 S.801 STEVENS, P.O. BOX 179
 SPOKANE, WA 99210

-	I	MH	JMD	PROTOTYPE			
ZONE	REV.	ECO	BY	DESCRIPTION OF CHANGE		APP.	DATE
DRAFTER	DATE		DESCRIPTION				
J. DERTING	6-30-04		LABEL, IX260+, FCC PART 15				
CHECKER	DATE		SIZE	DWG. NO			
ELEC. ENG	DATE		B	26-0622-001			
MECH. ENG	DATE		SCALE	SHEET		REV	
MFG. ENG	DATE		2.000	1 OF 1		1	