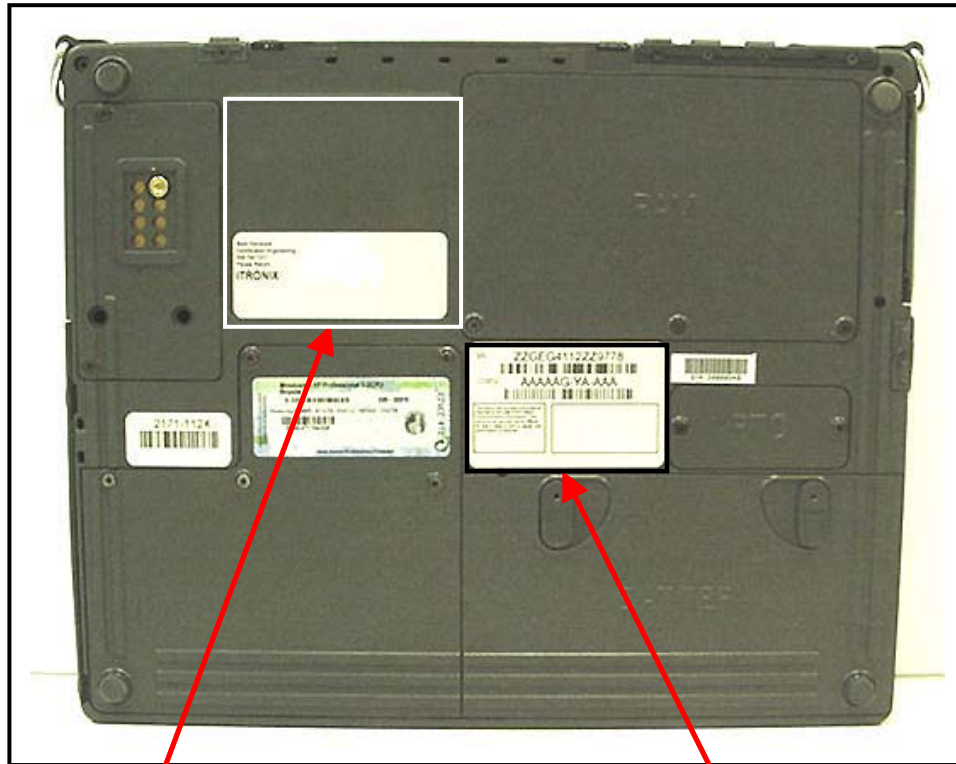


## FCC ID LABEL & LOCATION

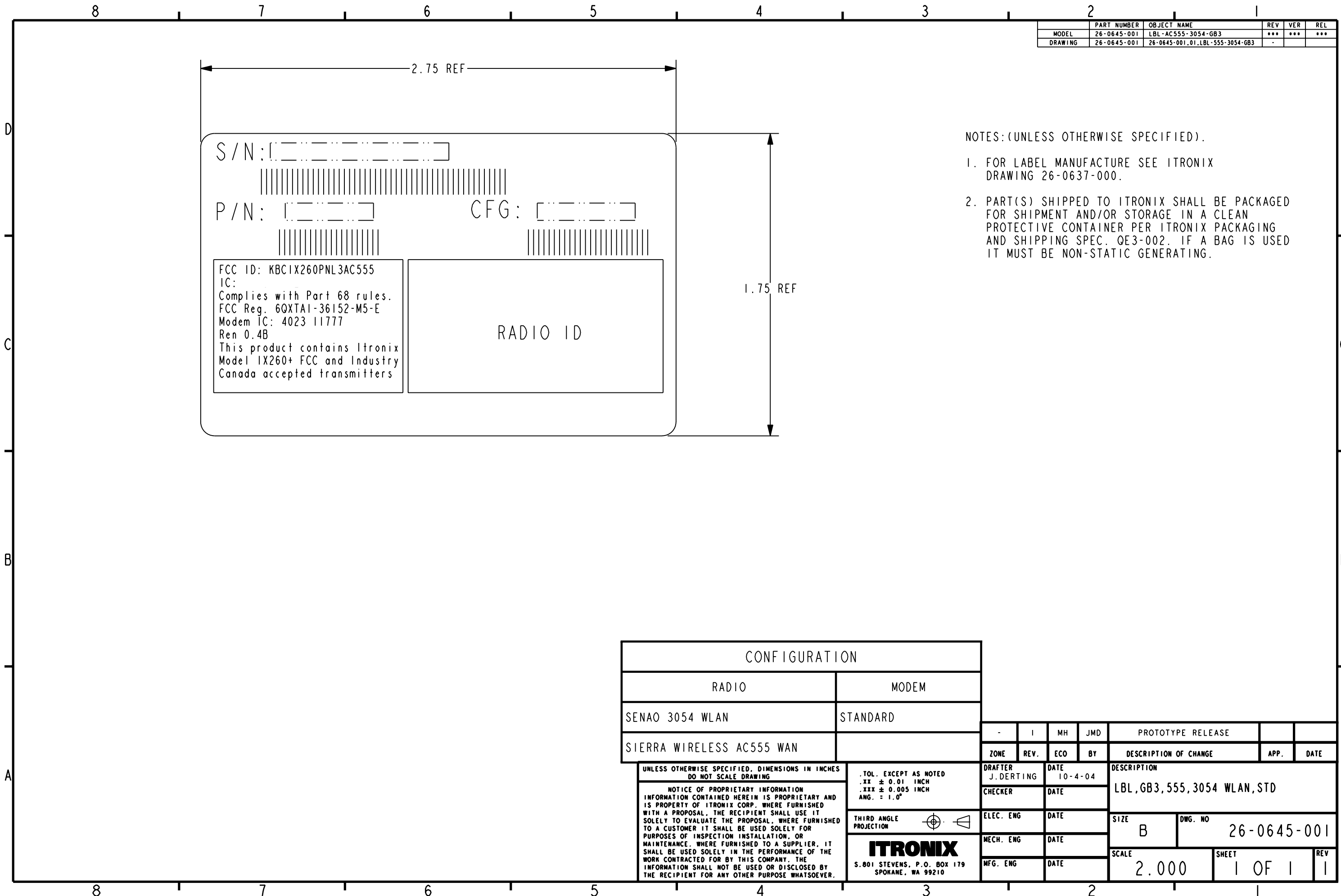
### LABELING REQUIREMENTS PER §2.925

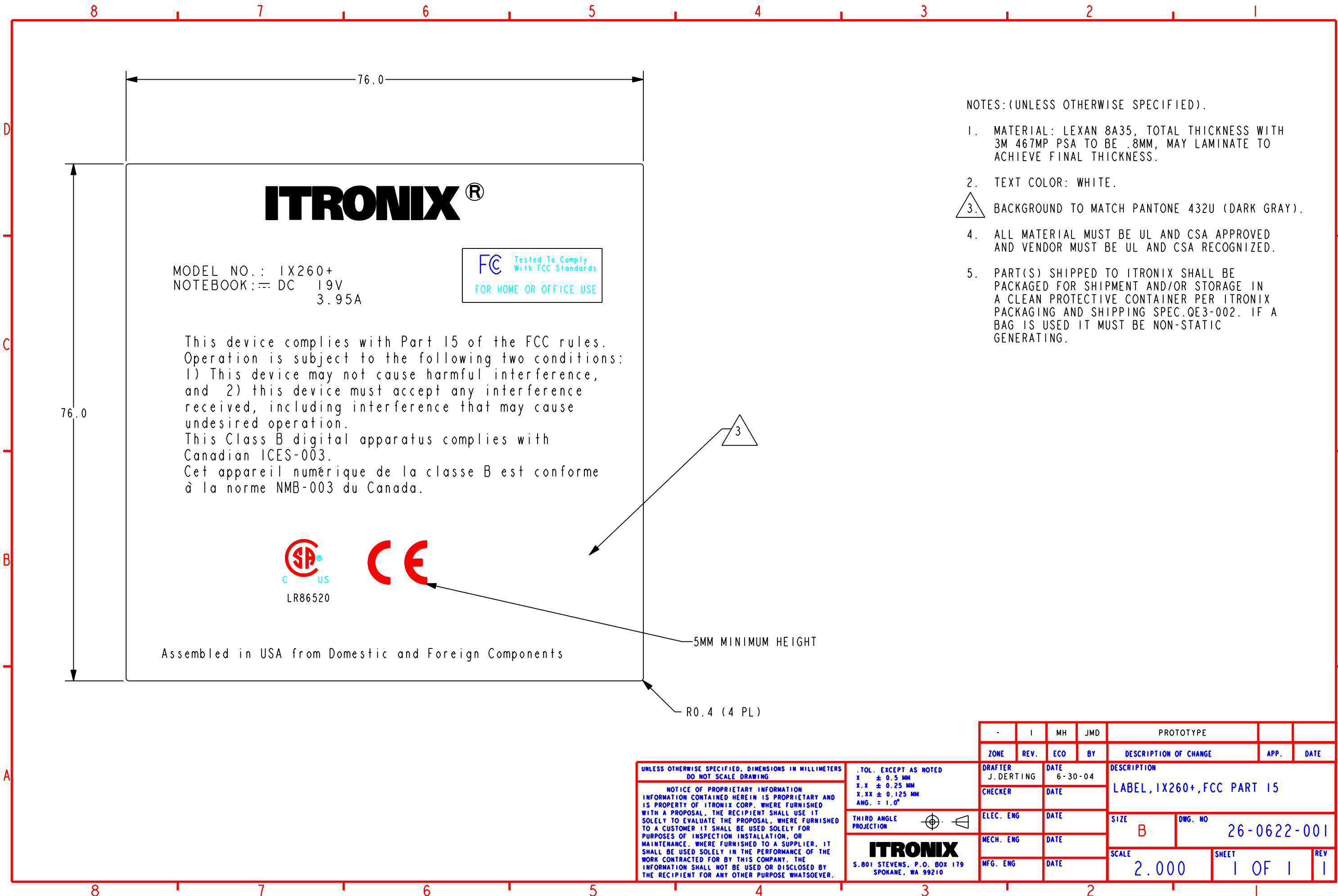
The label(s) shall be permanently affixed at a conspicuous location on the device.



**SEE NEXT PAGE(S) FOR  
FCC Part 15(B) DoC LABEL**

**SEE NEXT PAGE(S)  
FOR FCC ID LABEL**





UNLESS OTHERWISE SPECIFIED, DIMENSIONS IN MILLIMETERS  
DO NOT SCALE DRAWING

NOTICE OF PROPRIETARY INFORMATION  
INFORMATION CONTAINED HEREIN IS PROPRIETARY AND  
IS PROPERTY OF ITRONIX CORP. WHERE FURNISHED  
WITH A PROPOSAL, THE RECIPIENT SHALL USE IT  
SOLELY TO EVALUATE THE PROPOSAL, WHERE FURNISHED  
TO A CUSTOMER IT SHALL BE USED SOLELY FOR  
PURPOSES OF INSPECTION INSTALLATION, OR  
MAINTENANCE. WHERE FURNISHED TO A SUPPLIER, IT  
SHALL BE USED SOLELY IN THE PERFORMANCE OF THE  
WORK CONTRACTED FOR BY THIS COMPANY. THE  
INFORMATION SHALL NOT BE USED OR DISCLOSED BY  
THE RECIPIENT FOR ANY OTHER PURPOSE WHATSOEVER.

TOL. EXCEPT AS NOTED  
X ± 0.5 MM  
X.X ± 0.25 MM  
X.XX ± 0.125 MM  
ANG. = 1.0°

THIRD ANGLE  
PROJECTION

**ITRONIX**  
S.801 STEVENS, P.O. BOX 179  
SPOKANE, WA 99210

-	I	MH	JMD	PROTOTYPE			
ZONE	REV.	ECO	BY	DESCRIPTION OF CHANGE		APP.	DATE
DRAFTER J. DERTING	DATE 6-30-04			DESCRIPTION LABEL, IX260+, FCC PART 15			
CHECKER	DATE						
ELEC. ENG	DATE			SIZE B	DWG. NO 26-0622-001		
MECH. ENG	DATE			SCALE 2.000			
MFG. ENG	DATE						
				SHEET 1 OF 1		REV 1	