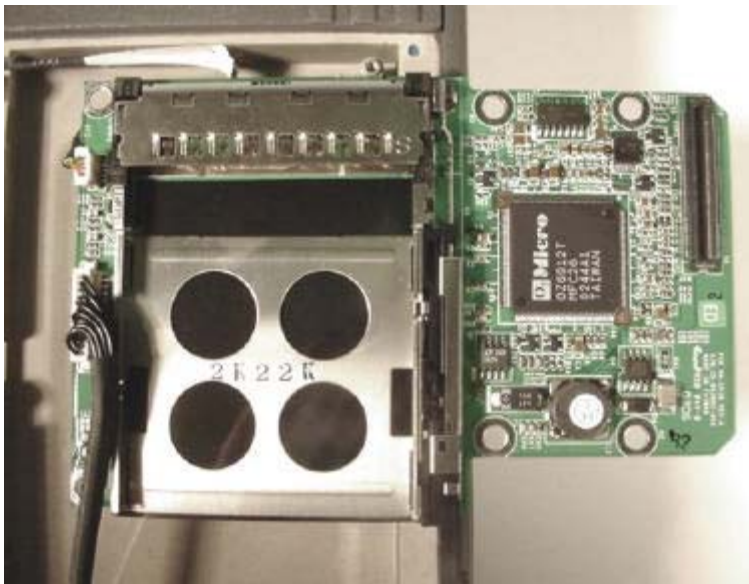
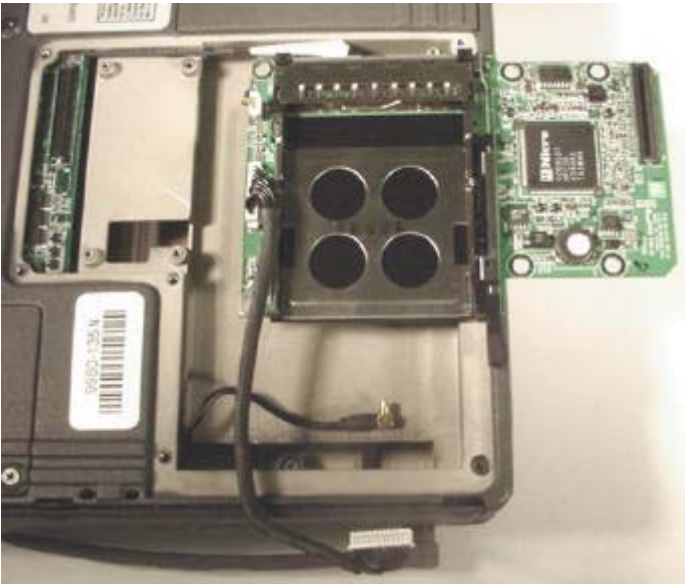


INTERNAL EUT PHOTOGRAPHS
with RIM 902 Mobitex Radio Modem



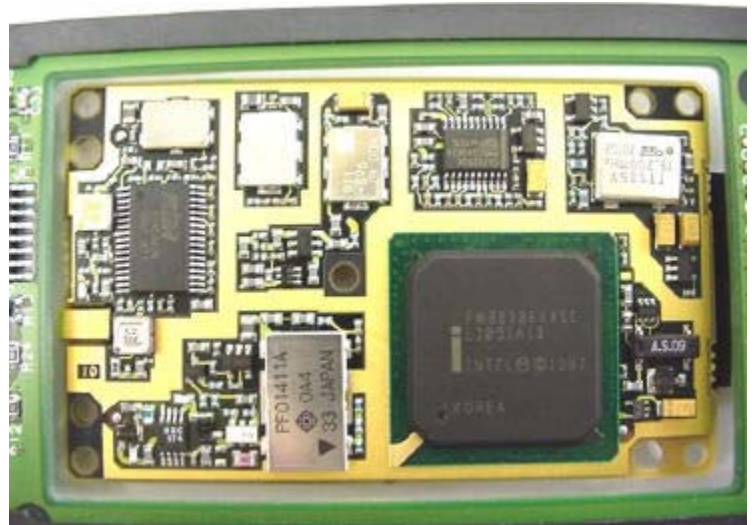
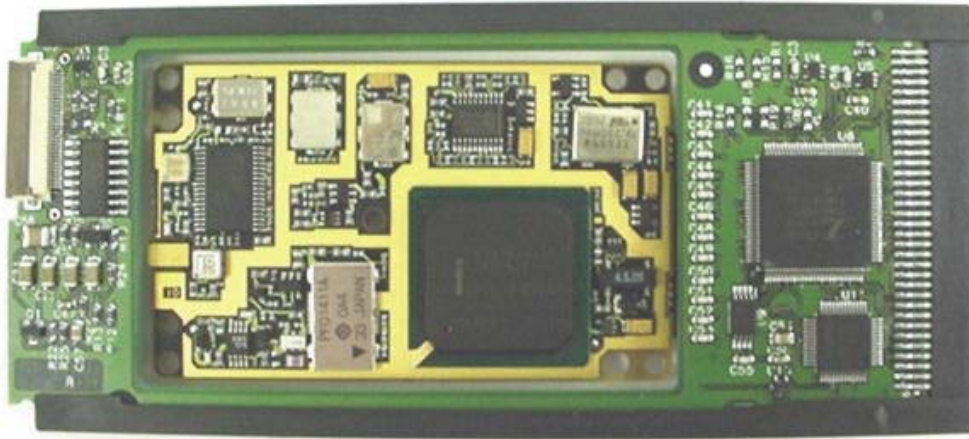
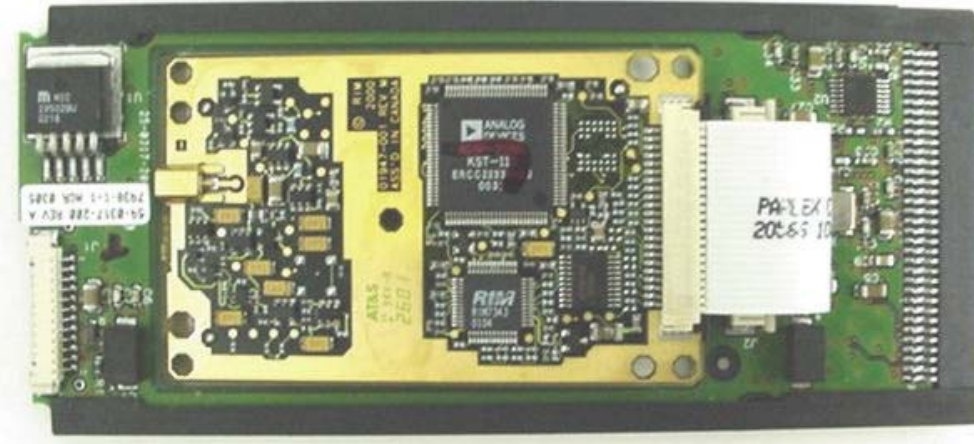
INTERNAL EUT PHOTOGRAPHS
with RIM 902 Mobitex Radio Modem



INTERNAL EUT PHOTOGRAPHS
RIM 902 Mobitex Radio Modem



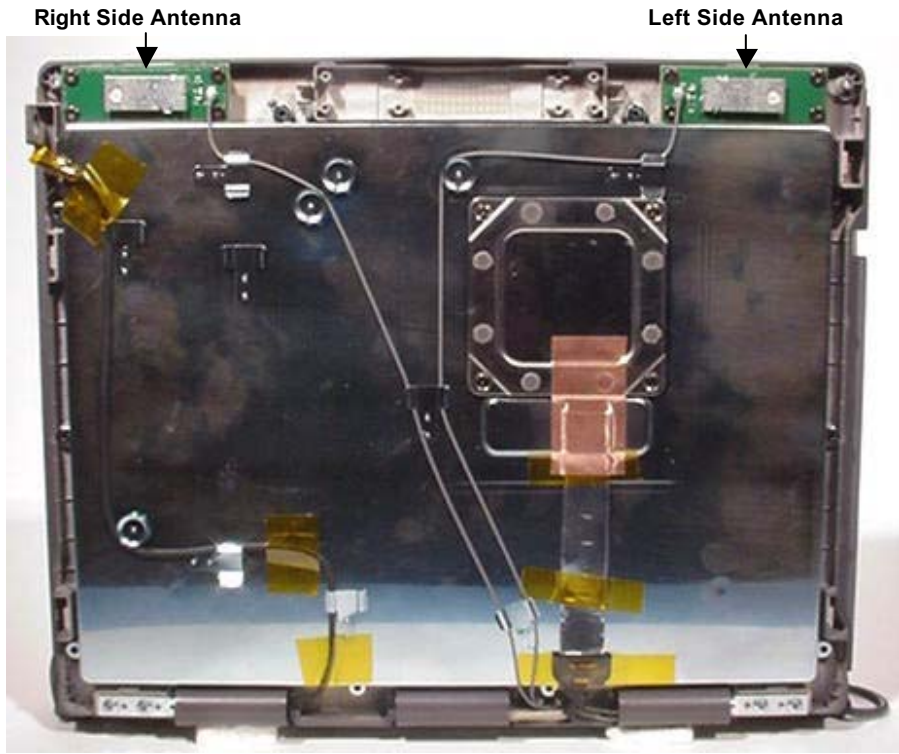
INTERNAL EUT PHOTOGRAPHS
RIM 902 Mobitex Radio Modem



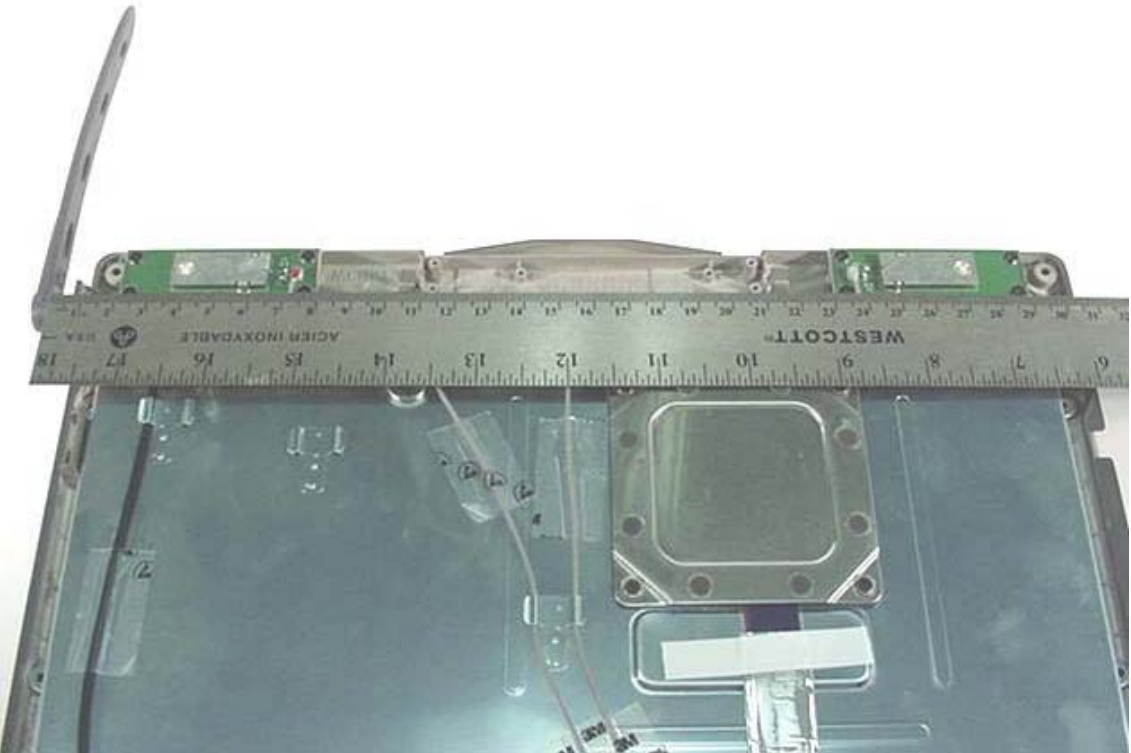
INTERNAL EUT PHOTOGRAPHS
Co-located Cisco MPI-350 Mini-PCI DSSS WLAN Card



INTERNAL EUT PHOTOGRAPHS
Dual Internal Antenna for Co-located Cisco MPI-350 Mini-PCI DSSS WLAN Card

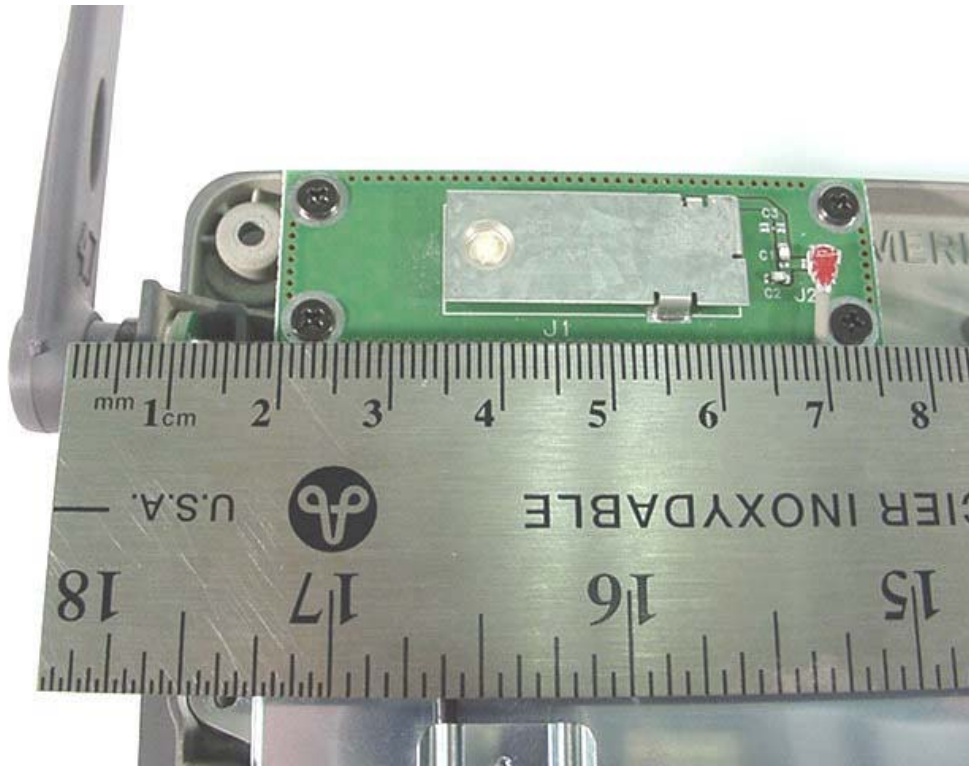


Back Side of LCD Display

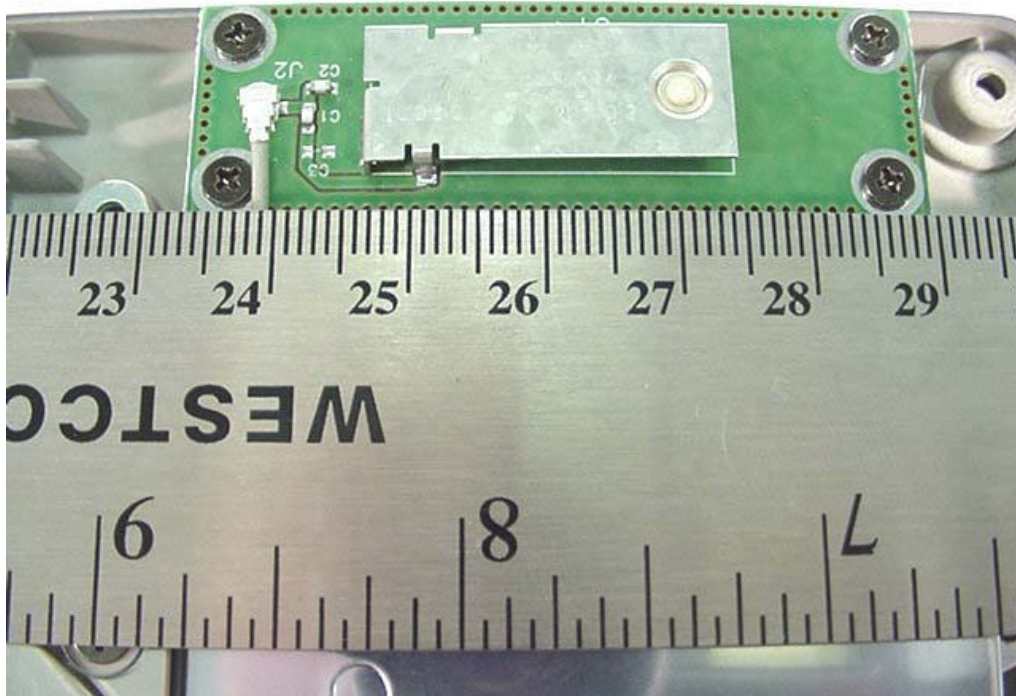


Distance at LCD back-side between dipole antenna feed/swivel-joint and WLAN dual antennas

INTERNAL EUT PHOTOGRAPHS
Dual Internal Antenna for Co-located Cisco MPI-350 Mini-PCI DSSS WLAN Card

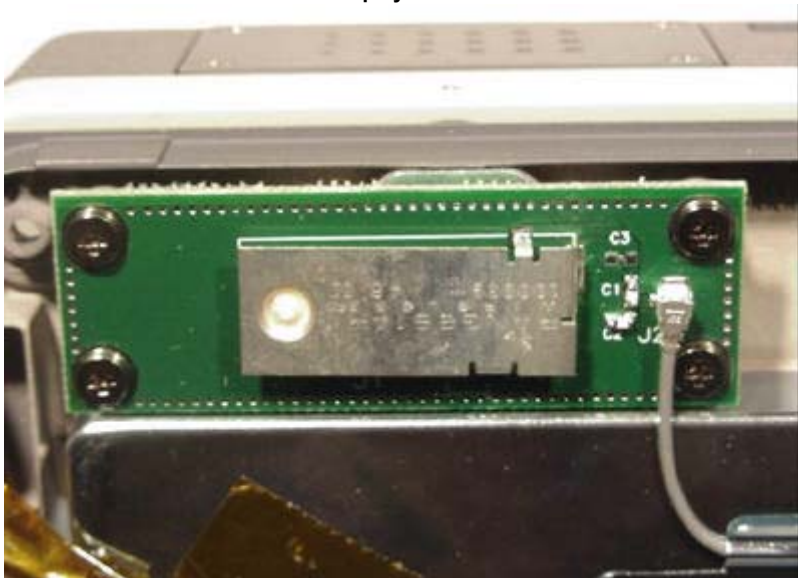
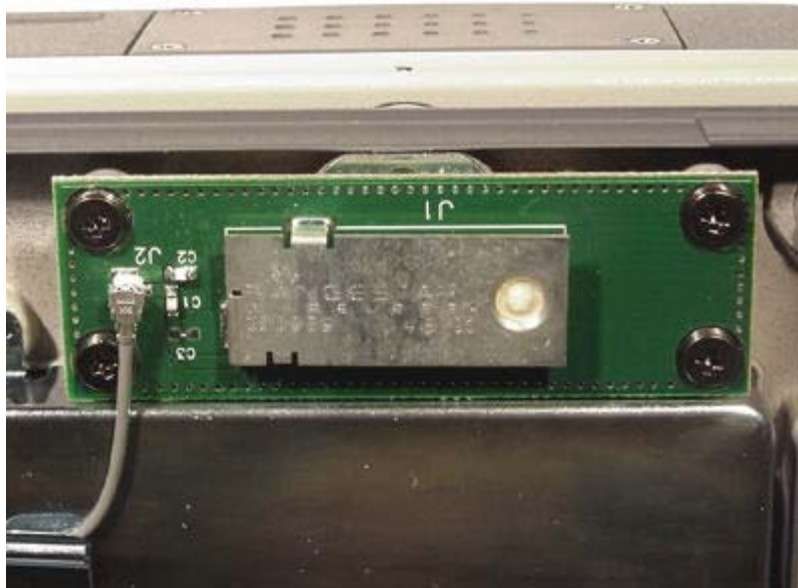
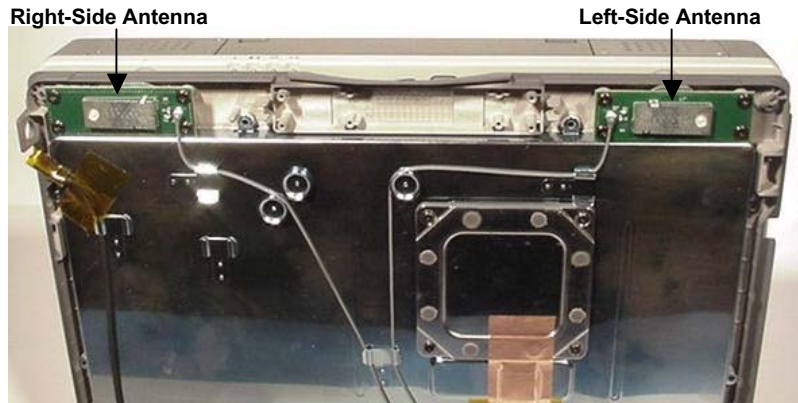


Distance at LCD back-side between dipole antenna feed/swivel-joint and WLAN right-side antenna

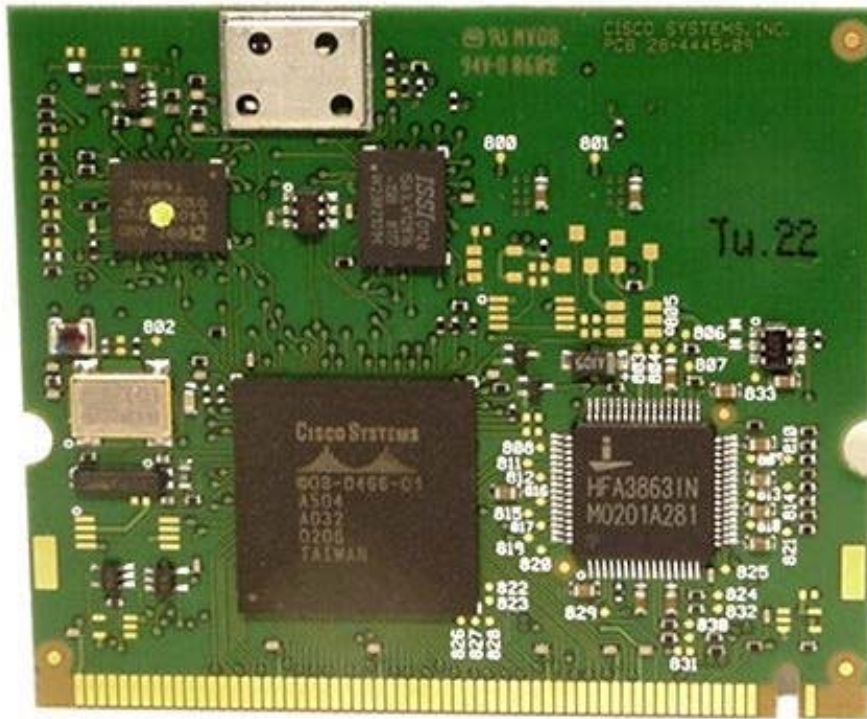


Distance at LCD back-side between dipole antenna feed/swivel-joint and WLAN left-side antenna

INTERNAL EUT PHOTOGRAPHS
Dual Internal Antenna for Co-located Cisco MPI-350 Mini-PCI DSSS WLAN Card

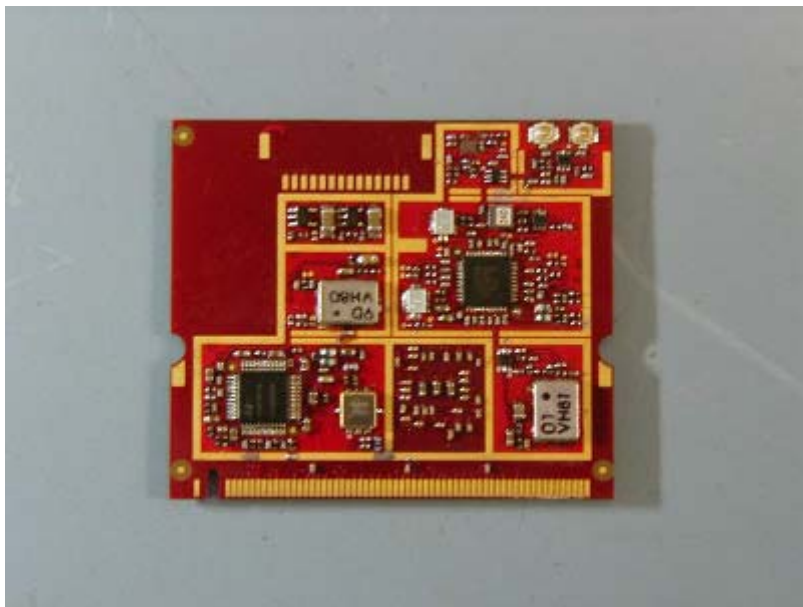


INTERNAL EUT PHOTOGRAPHS
Co-located Cisco MPI-350 Mini-PCI DSSS WLAN Card





Top view of the board without shielding



Bottom view of the board without shielding