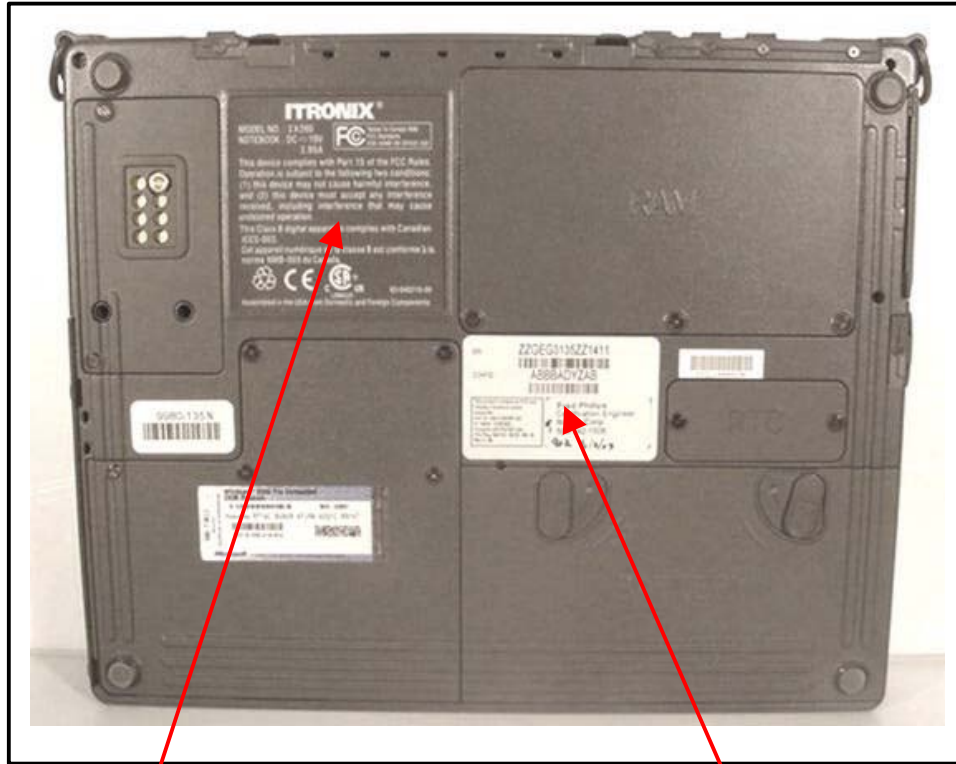


FCC ID LABEL & LOCATION

LABELING REQUIREMENTS PER §2.925

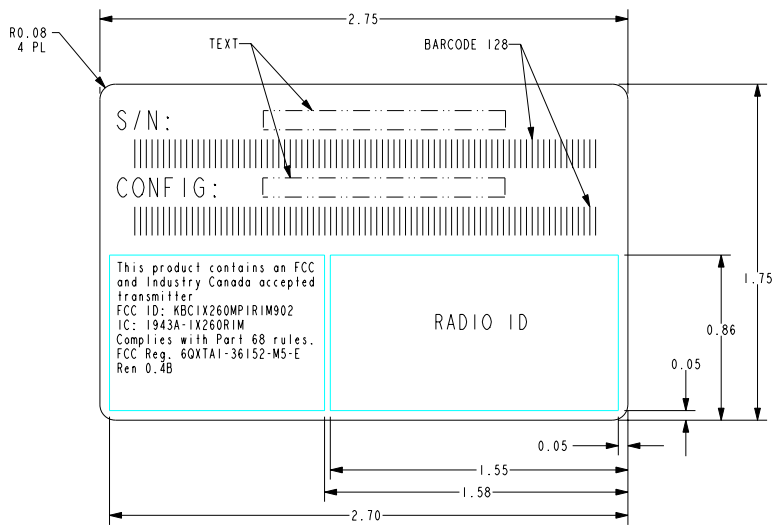
The label(s) shall be permanently affixed at a conspicuous location on the device.



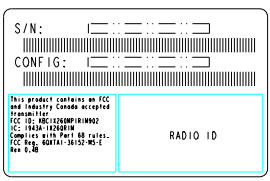
SEE NEXT PAGE(S) FOR
PART 15(B) DoC LABEL

SEE NEXT PAGE(S) FOR
PART 90 FCC ID LABEL

8 7 6 5 4 3 2 1



- NOTES: (UNLESS OTHERWISE SPECIFIED).
1. MATERIAL: 3M 7818 MATTE SILVER POLYESTER W/#310 ACRYLIC ADHESIVE.
 2. PRINTING: INK, SONY #4072 OR EQUIV.
 3. ALL MATERIAL MUST BE UL AND CSA APPROVED AND VENDOR MUST BE UL AND CSA RECOGNIZED.
 4. PART(S) SHIPPED TO ITRONIX SHALL BE PACKAGED FOR SHIPMENT AND/OR STORAGE IN A CLEAN PROTECTIVE CONTAINER PER ITRONIX PACKAGING AND SHIPPING SPEC. QE3-002. IF A BAG IS USED IT MUST BE NON-STATIC GENERATING.



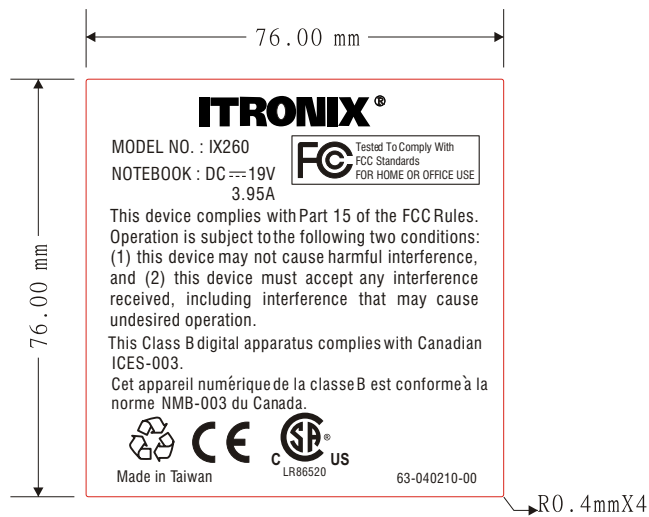
SCALE 1:000

UNLESS OTHERWISE SPECIFIED, DIMENSIONS IN INCHES DO NOT SCALE DRAWING.
 NOTICE OF PROPRIETARY INFORMATION INFORMATION CONTAINED HEREIN IS PROPRIETARY AND IS PROPERTY OF ITRONIX CORP. WHERE FURNISHED TO A CUSTOMER, IT SHALL BE USED SOLELY FOR PURPOSES OF INSPECTION, INSTALLATION, OR MAINTENANCE, WHEN FURNISHED TO A SUPPLIER, IT SHALL BE USED SOLELY IN THE PERFORMANCE OF THE WORK CONTRACTED FOR BY THIS COMPANY. THE INFORMATION SHALL NOT BE USED OR DISCLOSED BY THE RECIPIENT FOR ANY OTHER PURPOSE WHATSOEVER.

TOL. EXCEPT AS NOTED
 ZE ± 0.01 INCH
 ZEN ± 0.005 INCH
 ANG. ± 1.0°
 THIRD ANGLE PROJECTION
ITRONIX
 S.801 STEVENS, P.O. BOX 179
 SPokane, WA 99216

PROTO RELEASE						
ZONE	REV.	ECO	BY	DESCRIPTION OF CHANGE	APP.	DATE
DRAFTER	RAK	9 JUN 03		DESCRIPTION		
CHECKER				LBL,GB11,RIM,MINI WLAN,STD MDM		
ELEC. ENG				SIZE	DWG. NO	26-0507-002
MECH. ENG				SCALE	SHEET	1 OF 1
MFG. ENG				DATE		
				2.000		

8 7 6 5 4 3 2 1



E4309

	Title: FCC Label For P16	Model: P16 (IX260)	Scale: 1:1	Sheet: 1 of 1
		Artwork Number:	Part Number: 63-040210-00	Date: 08/19/02
<i>Color Requirement:</i> Background : TCG-426P Text : Pantone 441C	Material: PC, Thickness 0.8mm	Chief Designer:	Designer: Wen Fu Chieng	Revision: 0