

**DECLARATION OF COMPLIANCE
SAR EVALUATION**

Test Lab

CELLTECH RESEARCH INC.
Testing and Engineering Lab
1955 Moss Court
Kelowna, B.C.
Canada V1Y 9L3
Phone: 250-448-7047
Fax: 250-448-7046
e-mail: info@celltechlabs.com
web site: www.celltechlabs.com

Applicant Information

ITRONIX CORPORATION
801 South Stevens Street
Spokane, WA 99210-0179

Rule Part(s):	FCC 47 CFR §2.1093; IC RSS-102 Issue 1 (Provisional)
Test Procedure(s):	FCC OET Bulletin 65, Supplement C (01-01)
FCC Device Classification:	Part 24 Licensed Portable Transmitter worn on body (PCT)
IC Device Classification:	2GHz Personal Communication Services
FCC ID:	KBCIX260AC750
Model(s):	IX260
Device Type:	Rugged Laptop PC with Sierra Wireless AirCard 750 PCS GSM/GPRS Modem
Modulation:	GMSK
Tx Frequency Range:	1850.25 - 1909.875 MHz
RF Output Power Tested:	27.9 dBm Conducted (1850.25 MHz) 27.9 dBm Conducted (1880.00 MHz) 27.8 dBm Conducted (1909.875 MHz)
Antenna Type:	External Dipole
Battery Type:	11.1V Lithium-Ion, 6.0Ah (Model: A2121-2)
Max. SAR Measured:	1.51 W/kg (1g average)

Celltech Research Inc. declares under its sole responsibility that this device was found to be in compliance with the Specific Absorption Rate (SAR) RF exposure requirements specified in FCC 47 CFR §2.1093 and Health Canada's Safety Code 6. The device was tested in accordance with the measurement standards and procedures specified in FCC OET Bulletin 65, Supplement C, Edition 01-01 and Industry Canada RSS-102 Issue 1 - Provisional (General Population / Uncontrolled Exposure).

I attest to the accuracy of data. All measurements were performed by me or were made under my supervision and are correct to the best of my knowledge and belief. I assume full responsibility for the completeness of these measurements and vouch for the qualifications of all persons taking them.

This test report shall not be reproduced partially, or in full, without the prior written approval of Celltech Research Inc. The results and statements contained in this report pertain only to the device(s) evaluated.



Russell Pipe
Senior Compliance Technologist
Celltech Research Inc.



TABLE OF CONTENTS		
1.0	INTRODUCTION.....	3
2.0	DESCRIPTION OF EUT.....	3
3.0	SAR MEASUREMENT SYSTEM	4
4.0	MEASUREMENT SUMMARY.....	5
5.0	DETAILS OF SAR EVALUATION.....	6
6.0	EVALUATION PROCEDURES.....	6-7
7.0	SYSTEM PERFORMANCE CHECK.....	8
8.0	EQUIVALENT TISSUES.....	9
9.0	SAR LIMITS.....	9
10.0	SYSTEM SPECIFICATIONS.....	10
11.0	PROBE SPECIFICATION.....	11
12.0	SAM PHANTOM.....	11
13.0	DEVICE HOLDER.....	11
14.0	TEST EQUIPMENT LIST.....	12
15.0	MEASUREMENT UNCERTAINTIES.....	13
16.0	REFERENCES.....	14
	APPENDIX A - SAR MEASUREMENT DATA.....	15
	APPENDIX B - SYSTEM CHECK DATA.....	16
	APPENDIX C - SYSTEM VALIDATION.....	17
	APPENDIX D - PROBE CALIBRATION.....	18
	APPENDIX E - MEASURED FLUID DIELECTRIC PARAMETERS.....	19
	APPENDIX F - SAM PHANTOM CERTIFICATE OF CONFORMITY.....	20
	APPENDIX G - SAR TEST SETUP PHOTOGRAPHS.....	21

1.0 INTRODUCTION

This measurement report demonstrates that the ITRONIX CORPORATION Model: IX260 Rugged Laptop PC with Sierra Wireless AirCard 750 PCS GSM/GPRS PCMCIA Modem Card FCC ID: KBCIX260AC750 complies with the RF exposure requirements specified in FCC 47 CFR §2.1093 (see reference [1]) and Health Canada Safety Code 6 (see reference [2]) for the General Population environment. The test procedures described in FCC OET Bulletin 65, Supplement C, Edition 01-01 (see reference [3]) and IC RSS-102 Issue 1 (Provisional) (see reference [4]), were employed. A description of the product, operating configuration, detailed summary of the test results, methodology and procedures used in the evaluation, equipment used, and the various provisions of the rules are included within this test report.

2.0 DESCRIPTION of Equipment Under Test (EUT)

FCC Rule Part(s)	47 CFR §2.1093
IC Rule Part(s)	IC RSS-102 Issue 1 (Provisional)
Test Procedure(s)	FCC OET Bulletin 65, Supplement C (01-01)
FCC Device Classification	Part 24 Licensed Portable Transmitter worn on body (PCT)
IC Device Classification	2GHz Personal Communication Services
Device Type	Rugged Laptop PC with Sierra Wireless AirCard 750 PCS GSM/GPRS PCMCIA Modem Card
FCC ID	KBCIX260AC750
Model(s)	IX260
Serial No.	Pre-production
Modulation	GMSK
Tx Frequency Range	1850.25 - 1909.875 MHz
RF Output Power Tested	27.9 dBm Conducted (1850.25 MHz) 27.9 dBm Conducted (1880.00 MHz) 27.8 dBm Conducted (1909.875 MHz)
Antenna Type	External Dipole (Length: 4.3 inches)
Battery Type	11.1V Lithium-Ion, 6.0Ah (Model: A2121-2)

3.0 SAR MEASUREMENT SYSTEM

Celltech Research SAR measurement facility utilizes the Dosimetric Assessment System (DASY™) manufactured by Schmid & Partner Engineering AG (SPEAG™) of Zurich, Switzerland. The DASY system is comprised of the robot controller, computer, near-field probe, probe alignment sensor, specific anthropomorphic mannequin (SAM) phantom, and various planar phantoms for brain and/or body SAR evaluations. The robot is a six-axis industrial robot performing precise movements to position the probe to the location (points) of maximum electromagnetic field (EMF). A cell controller system contains the power supply, robot controller, teach pendant (Joystick), and remote control, is used to drive the robot motors. The Staubli robot is connected to the cell controller to allow software manipulation of the robot. A data acquisition electronic (DAE) circuit performs the signal amplification, signal multiplexing, AD-conversion, offset measurements, mechanical surface detection, collision detection, etc. is connected to the Electro-optical coupler (EOC). The EOC performs the conversion from the optical into digital electric signal of the DAE and transfers data to the PC plug-in card. The DAE3 utilizes a highly sensitive electrometer-grade preamplifier with auto-zeroing, a channel and gain-switching multiplexer, a fast 16-bit AD-converter and a command decoder and control logic unit. Transmission to the PC-card is accomplished through an optical downlink for data and status information and an optical uplink for commands and clock lines. The mechanical probe-mounting device includes two different sensor systems for frontal and sidewise probe contacts. They are also used for mechanical surface detection and probe collision detection. The robot uses its own controller with a built in VME-bus computer.



DASY3 SAR Measurement System with SAM phantom

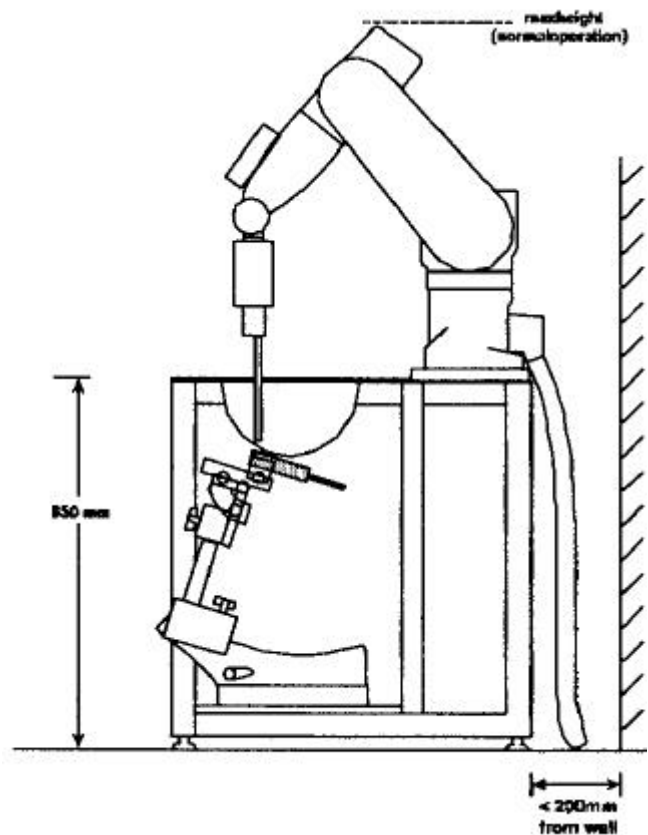


Figure 1. DASY3 Compact Version - Side View

4.0 MEASUREMENT SUMMARY

The measurement results were obtained with the EUT tested in the conditions described in this report. Detailed measurement data and plots showing the maximum SAR location of the EUT are reported in Appendix A.

BODY SAR MEASUREMENT RESULTS									
Freq. (MHz)	Channel	Mode	Conducted Power (dBm)		Phantom Section	Antenna Position to Planar Phantom	Laptop PC Position to Planar Phantom	Separation Distance (cm)	Measured SAR 1g (W/kg)
			Before	After					
1880.00	661	GPRS	27.9	27.7	Planar	Parallel (Stowed)	Back of LCD (LCD Closed)	0.0	1.04
1850.25	512	GPRS	27.9	27.7	Planar	Parallel (Stowed)	Back of LCD (LCD Closed)	0.0	1.38
1909.875	810	GPRS	27.8	27.7	Planar	Parallel (Stowed)	Back of LCD (LCD Closed)	0.0	1.51
1880.00	661	GPRS	27.9	27.7	Planar	Perpendicular (180°)	Back of LCD (LCD Closed)	0.0	0.191
1880.00	661	GPRS	27.9	27.9	Planar	Parallel (Stowed)	Bottom Side of PC (LCD Closed)	0.0	0.0628
1880.00	661	GPRS	27.9	27.7	Planar	Perpendicular (Extended)	Bottom Side of PC (LCD Closed)	0.0	0.0760
1880.00	661	GPRS	27.9	27.9	Planar	Parallel (Stowed)	Right Side of LCD (LCD Closed)	1.5	0.916
1850.25	512	GPRS	27.9	27.8	Planar	Parallel (Stowed)	Right Side of LCD (LCD Closed)	1.5	0.902
1909.875	810	GPRS	27.8	27.7	Planar	Parallel (Stowed)	Right Side of LCD (LCD Closed)	1.5	0.751
1880.00	661	GPRS	27.9	27.7	Planar	Parallel (Extended)	Right side of LCD (LCD Closed)	1.5	0.105
ANSI / IEEE C95.1 1992 - SAFETY LIMIT BODY: 1.6 W/kg (averaged over 1 gram) Spatial Peak - Uncontrolled Exposure / General Population									
Test Date(s)	10/31/02		Relative Humidity		68 %				
Measured Mixture Type	1900MHz Muscle		Atmospheric Pressure		103.4 kPa				
Dielectric Constant ϵ_r	IEEE Target	Measured	Ambient Temperature		22.2 °C				
	53.3 ±5%	53.3	Fluid Temperature		21.4 °C				
Conductivity σ (mho/m)	IEEE Target	Measured	Fluid Depth		≥ 15 cm				
	1.52 ±5%	1.51	ρ (Kg/m ³)		1000				

Note(s):

1. If the SAR measurements performed at the middle channel were ≥ 3 dB below the SAR limit, SAR evaluation for the low and high channels was optional (per FCC OET Bulletin 65, Supplement C, Edition 01-01 (see reference [3])).
2. The ambient and fluid temperatures were measured prior to, and during, the fluid dielectric parameter check and the SAR evaluation. The temperatures listed in the table above were consistent for all measurement periods.

5.0 DETAILS OF SAR EVALUATION

The ITRONIX CORPORATION Model: IX260 Rugged Laptop PC with Sierra Wireless AirCard 750 PCS GSM/GPRS PCMCIA Modem Card FCC ID: KBCIX260AC750 was found to be compliant for localized Specific Absorption Rate based on the following test provisions and conditions described below. The detailed test setup photographs are shown in Appendix G.

1. The EUT was tested for body SAR with the LCD display closed and the back of the LCD display facing parallel to, and touching, the outer surface of the planar phantom. The EUT was tested with the antenna in both the parallel (stowed) and perpendicular (180°) positions to the outer surface of the planar phantom.
2. The EUT was tested for body SAR with the LCD display closed and the bottom of the Laptop PC facing parallel to, and touching, the outer surface of the planar phantom. The EUT was tested with the antenna in both the parallel (stowed) and perpendicular (extended) positions to the outer surface of the planar phantom.
3. The EUT was tested for body SAR with the LCD display closed and the right side of the LCD display (antenna side) facing parallel to the outer surface of the planar phantom and a 1.5 cm separation distance between the antenna and the planar phantom. The EUT was tested with the antenna parallel to the outer surface of the planar phantom in both the stowed and extended positions.
4. The EUT was operated for an appropriate period prior to the evaluation to minimize power drift.
5. The conducted power levels were measured before and after each test using a Gigatronics 8652A Universal Power Meter according to the procedures described in FCC 47 CFR §2.1046. If the conducted power level measured after each evaluation varied more than 5% from the initial power level, then the EUT was retested. Any unusual anomalies over the course of the test also warranted a re-evaluation.
6. The EUT was controlled in test mode via internal software. SAR measurements were performed with the EUT transmitting continuously at maximum power on 4 time slots in GPRS mode (Crest factor: 2). This is the maximum output condition since the EUT is a Class 12 multi-slot GSM/GPRS modem.
7. The location of the maximum spatial SAR distribution (Hot Spot) was determined relative to the device and its antenna.
8. The EUT was tested with a fully charged battery.
9. Due to the dimensions of the EUT, a stack of low-density, low-loss dielectric foamed polystyrene was used in place of the device holder.

6.0 EVALUATION PROCEDURES

- a. (i) The evaluation was performed in the applicable area of the phantom depending on the type of device being tested. For devices held to the ear during normal operation, both the left and right ear positions were evaluated in accordance with FCC OET Bulletin 65, Supplement C (Edition 01-01) using the SAM phantom.
(ii) For body-worn and face-held devices a planar phantom was used.
- b. The SAR was determined by a pre-defined procedure within the DASY3 software. Upon completion of a reference and optical surface check, the exposed region of the phantom was scanned near the inner surface with a grid spacing of 20mm x 20mm.
- c. Based on the area scan data, the area of maximum absorption was determined by spline interpolation. Around this point, a volume of 40 x 40 x 35 mm (fine resolution volume scan, zoom scan) was assessed by measuring 5 x 5 x 7 points.
- d. The 1g and 10g spatial peak SAR was determined as follows:
 1. The first step was an extrapolation to find the points between the dipole center of the probe and the surface of the phantom. This data cannot be measured, since the center of the dipoles is 2.7 mm away from the tip of the probe and the distance between the surface and the lowest measuring point is 1.3 mm (see probe calibration document in Appendix D). The extrapolation was based on a least square algorithm [W. Gander, Computermathematik, p.168-180] (see reference [6]). Through the points in the first 3 cm in all z-axis, polynomials of the fourth order were calculated. This polynomial was then used to evaluate the points between the surface and the probe tip.
 2. The next step used 3D-spline interpolation to get all points within the measured volume in a 1mm grid (35000 points). The 3D-spline is composed of three one-dimensional splines with the "Not a knot" condition [W. Gander, Computermathematik, p.141-150] (x, y and z -direction) [Numerical Recipes in C, Second Edition, p.123ff] (see reference [6]).
 3. The maximal interpolated value was searched with a straightforward algorithm. Around this maximum the SAR values averaged over the spatial volumes (1g or 10g) were computed using the 3D-spline interpolation algorithm. 8000 points (20x20x20) were interpolated to calculate the average.

EVALUATION PROCEDURES (Cont.)

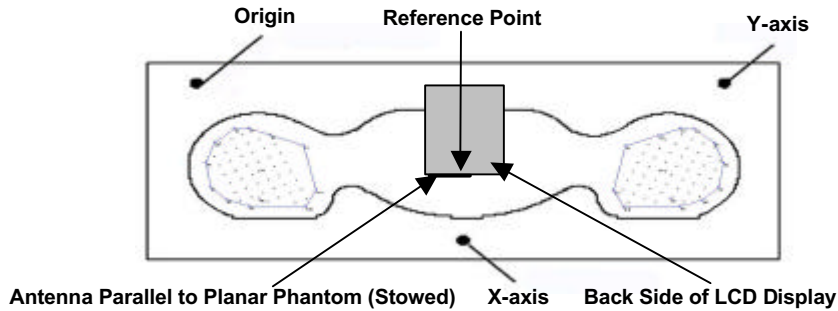


Figure 2. Phantom Reference Point & EUT Positioning Back Side of LCD Display (Closed)

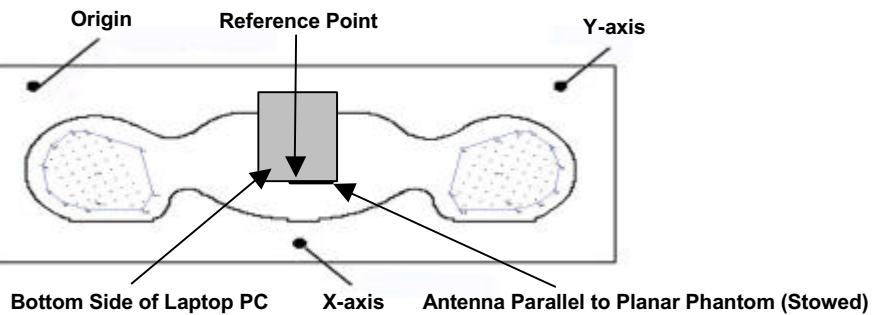


Figure 3. Phantom Reference Point & EUT Positioning Bottom Side of Laptop PC (LCD Display Closed)

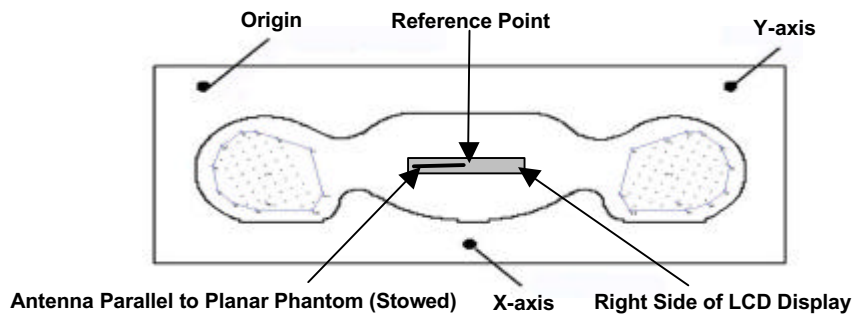


Figure 4. Phantom Reference Point & EUT Positioning Right Side of LCD Display (Closed)

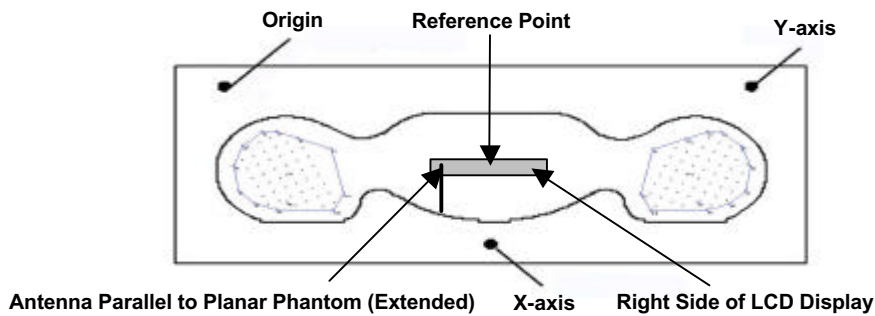


Figure 5. Phantom Reference Point & EUT Positioning Right Side of LCD Display (Closed)

7.0 SYSTEM PERFORMANCE CHECK

Prior to the assessment a system check was performed in the planar section of the SAM phantom with an 1800MHz dipole (see Appendix C for system validation procedures). The fluid dielectric parameters were measured prior to the system check using an 85070C Dielectric Probe Kit and an 8753E Network Analyzer (see Appendix E for printout of measured fluid dielectric parameters). A forward power of 250mW was applied to the dipole and the system was verified to a tolerance of $\pm 10\%$ (see Appendix B for system check test plot).

SYSTEM PERFORMANCE CHECK											
Test Date	Equiv. Tissue	SAR 1g (W/kg)		Dielectric Constant ϵ_r		Conductivity σ (mho/m)		ρ (Kg/m ³)	Ambient Temp.	Fluid Temp.	Fluid Depth
		IEEE Target	Measured	IEEE Target	Measured	IEEE Target	Measured				
10/31/02	1800MHz (Brain)	9.53 $\pm 10\%$	9.61	40.0 $\pm 5\%$	40.9	1.40 $\pm 5\%$	1.35	1000	22.2 °C	21.4 °C	≥ 15 cm

Note(s):

1. The ambient and fluid temperatures were measured prior to, and during, the fluid dielectric parameter check and the system performance check. The temperatures listed in the table above were consistent for all measurement periods.

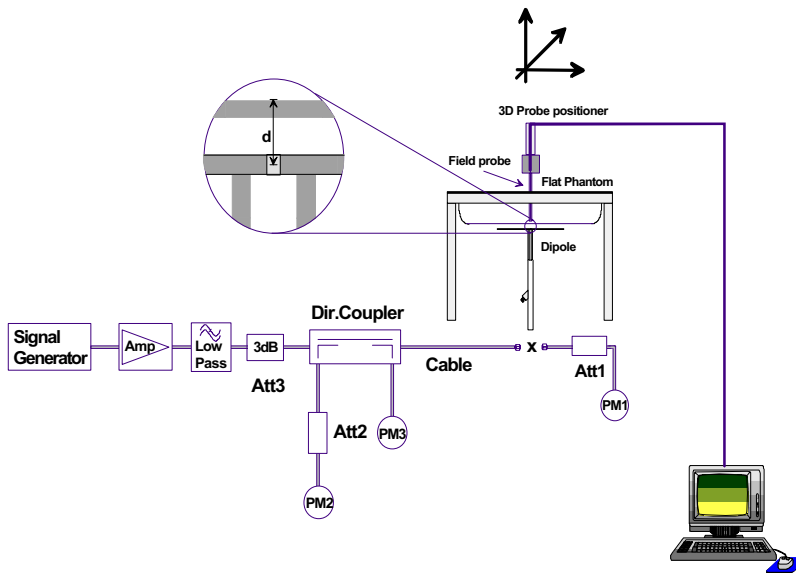


Figure 6. System Check Setup Diagram



1800MHz System Check Setup Photograph

8.0 EQUIVALENT TISSUES

The 1800-2000MHz brain and body mixtures consist of Glycol-monobutyl, water, and salt. The fluid was prepared according to standardized procedures and measured for dielectric parameters (permittivity and conductivity).

TISSUE MIXTURES (1 Liter Yields)		
INGREDIENT	1800MHz Brain (System Check)	1900MHz Body (EUT Evaluation)
Water	548.0 g	716.60 g
Glycol Monobutyl	448.5 g	300.70 g
Salt	3.20 g	3.10 g

9.0 SAR SAFETY LIMITS

EXPOSURE LIMITS	SAR (W/kg)	
	(General Population / Uncontrolled Exposure Environment)	(Occupational / Controlled Exposure Environment)
Spatial Average (averaged over the whole body)	0.08	0.4
Spatial Peak (averaged over any 1 g of tissue)	1.60	8.0
Spatial Peak (hands/wrists/feet/ankles averaged over 10 g)	4.0	20.0

Notes:

1. Uncontrolled environments are defined as locations where there is potential exposure of individuals who have no knowledge or control of their potential exposure.
2. Controlled environments are defined as locations where there is potential exposure of individuals who have knowledge of their potential exposure and can exercise control over their exposure.

10.0 ROBOT SYSTEM SPECIFICATIONS

Specifications

POSITIONER: Stäubli Unimation Corp. Robot Model: RX60L
Repeatability: 0.02 mm
No. of axis: 6

Data Acquisition Electronic (DAE) System

Cell Controller

Processor: Pentium III
Clock Speed: 450 MHz
Operating System: Windows NT
Data Card: DASY3 PC-Board

Data Converter

Features: Signal Amplifier, multiplexer, A/D converter, and control logic
Software: DASY3 software
Connecting Lines: Optical downlink for data and status info.
Optical uplink for commands and clock

PC Interface Card

Function: 24 bit (64 MHz) DSP for real time processing
Link to DAE3
16-bit A/D converter for surface detection system
serial link to robot
direct emergency stop output for robot

E-Field Probe

Model: ET3DV6
Serial No.: 1387
Construction: Triangular core fiber optic detection system
Frequency: 10 MHz to 6 GHz
Linearity: ± 0.2 dB (30 MHz to 3 GHz)

Phantom

Type: SAM V4.0C
Shell Material: Fiberglass
Thickness: 2.0 ± 0.1 mm
Volume: Approx. 20 liters

11.0 PROBE SPECIFICATION (ET3DV6)

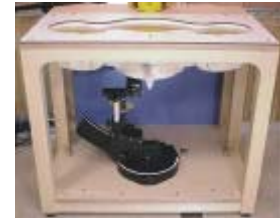
Construction:	Symmetrical design with triangular core Built-in shielding against static charges PEEK enclosure material (resistant to organic solvents, e.g. glycol)
Calibration:	In air from 10 MHz to 2.5 GHz In brain simulating tissue at frequencies of 900 MHz and 1.8 GHz (accuracy $\pm 8\%$)
Frequency:	10 MHz to >6 GHz; Linearity: ± 0.2 dB (30 MHz to 3 GHz)
Directivity:	± 0.2 dB in brain tissue (rotation around probe axis) ± 0.4 dB in brain tissue (rotation normal to probe axis)
Dynam. Rnge:	5 μ W/g to >100 mW/g; Linearity: ± 0.2 dB
Srfce. Detect.	± 0.2 mm repeatability in air and clear liquids over diffuse reflecting surfaces
Dimensions:	Overall length: 330 mm Tip length: 16 mm Body diameter: 12 mm Tip diameter: 6.8 mm Distance from probe tip to dipole centers: 2.7 mm
Application:	General dosimetry up to 3 GHz Compliance tests of mobile phone



ET3DV6 E-Field Probe

12.0 SAM PHANTOM V4.0C

The SAM phantom V4.0C is a fiberglass shell phantom with a 2.0 mm shell thickness for left and right head and flat planar area integrated in a wooden table. The shape of the fiberglass shell corresponds to the phantom defined by SCC34-SC2. The device holder positions are adjusted to the standard measurement positions in the three sections.



SAM Phantom

13.0 DEVICE HOLDER

The DAS3 device holder has two scales for device rotation (with respect to the body axis) and the device inclination (with respect to the line between the ear openings). The plane between the ear openings and the mouth tip has a rotation angle of 65° . The bottom plate contains three pair of bolts for locking the device holder. The device holder positions are adjusted to the standard measurement positions in the three sections.



Device Holder

14.0 TEST EQUIPMENT LIST

SAR MEASUREMENT SYSTEM		
EQUIPMENT	SERIAL NO.	CALIBRATION DATE
DASY3 System		
-Robot	599396-01	N/A
-ET3DV6 E-Field Probe	1387	Feb 2002
-300MHz Validation Dipole	135	Oct 2002
-450MHz Validation Dipole	136	Oct 2002
-900MHz Validation Dipole	054	June 2001
-1800MHz Validation Dipole	247	June 2001
-2450MHz Validation Dipole	150	Oct 2002
-SAM Phantom V4.0C	N/A	N/A
-Small Planar Phantom	N/A	N/A
-Medium Planar Phantom	N/A	N/A
-Large Planar Phantom	N/A	N/A
85070C Dielectric Probe Kit	N/A	N/A
Gigatronics 8652A Power Meter	1835272	Feb 2002
-Power Sensor 80701A	1833535	Feb 2002
-Power Sensor 80701A	1833542	Mar 2002
Pasternack Attenuator (30dB, 2W)	PE7014-30	N/A
E4408B Spectrum Analyzer	US39240170	Nov 2002
8594E Spectrum Analyzer	3543A02721	Feb 2002
8753E Network Analyzer	US38433013	Feb 2002
8648D Signal Generator	3847A00611	Feb 2002
5S1G4 Amplifier Research Power Amplifier	26235	N/A

15.0 MEASUREMENT UNCERTAINTIES

Error Description	Uncertainty Value ±%	Probability Distribution	Divisor	c_i 1g	Standard Uncertainty ±% (1g)	v_i or v_{eff}
Measurement System						
Probe calibration	± 4.8	Normal	1	1	± 4.8	∞
Axial isotropy of the probe	± 4.7	Rectangular	√3	(1- c_p)	± 1.9	∞
Spherical isotropy of the probe	± 9.6	Rectangular	√3	(c_p)	± 3.9	∞
Spatial resolution	± 0.0	Rectangular	√3	1	± 0.0	∞
Boundary effects	± 5.5	Rectangular	√3	1	± 3.2	∞
Probe linearity	± 4.7	Rectangular	√3	1	± 2.7	∞
Detection limit	± 1.0	Rectangular	√3	1	± 0.6	∞
Readout electronics	± 1.0	Normal	1	1	± 1.0	∞
Response time	± 0.8	Rectangular	√3	1	± 0.5	∞
Integration time	± 1.4	Rectangular	√3	1	± 0.8	∞
RF ambient conditions	± 3.0	Rectangular	√3	1	± 1.7	∞
Mech. constraints of robot	± 0.4	Rectangular	√3	1	± 0.2	∞
Probe positioning	± 2.9	Rectangular	√3	1	± 1.7	∞
Extrapolation & integration	± 3.9	Rectangular	√3	1	± 2.3	∞
Test Sample Related						
Device positioning	± 6.0	Normal	√3	1	± 6.7	12
Device holder uncertainty	± 5.0	Normal	√3	1	± 5.9	8
Power drift	± 5.0	Rectangular	√3		± 2.9	∞
Phantom and Setup						
Phantom uncertainty	± 4.0	Rectangular	√3	1	± 2.3	∞
Liquid conductivity (target)	± 5.0	Rectangular	√3	0.6	± 1.7	∞
Liquid conductivity (measured)	± 5.0	Rectangular	√3	0.6	± 1.7	∞
Liquid permittivity (target)	± 5.0	Rectangular	√3	0.6	± 1.7	∞
Liquid permittivity (measured)	± 5.0	Rectangular	√3	0.6	± 1.7	∞
Combined Standard Uncertainty					± 13.7	
Expanded Uncertainty (k=2)					± 27.5	

Measurement Uncertainty Table in accordance with IEEE Std 1528 (Draft - see Reference [5])

16.0 REFERENCES

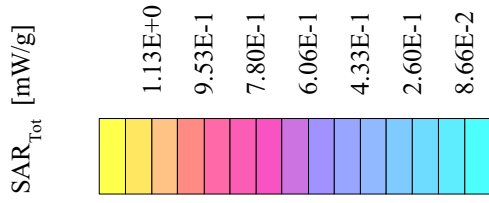
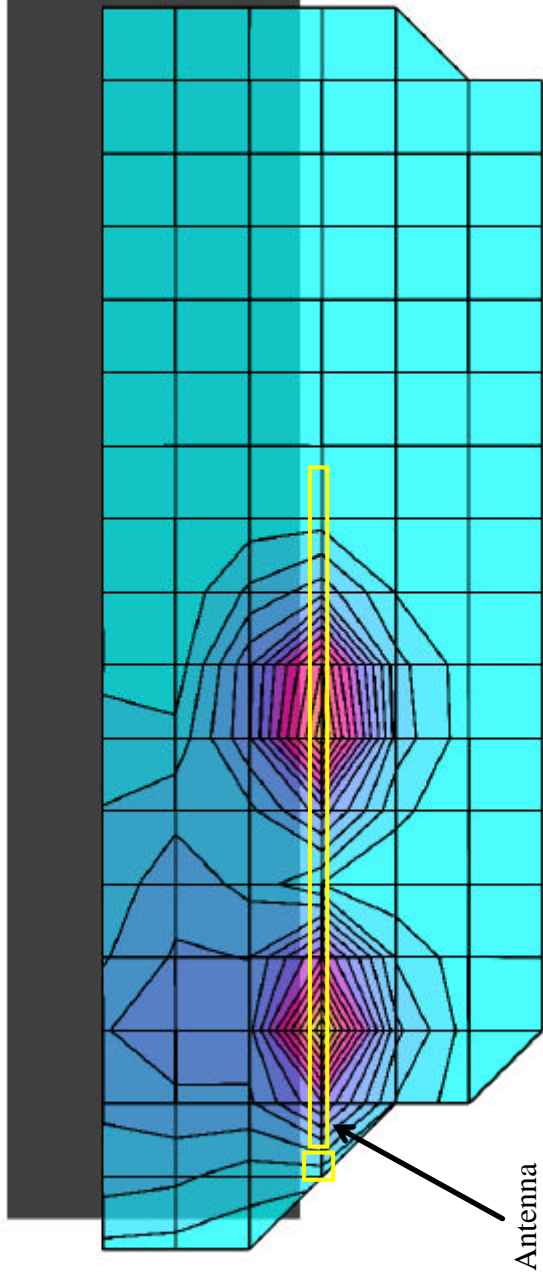
- [1] Federal Communications Commission, "Radiofrequency radiation exposure evaluation: portable devices", Rule Part 47 CFR §2.1093: 1999.
- [2] Health Canada, "Limits of Human Exposure to Radiofrequency Electromagnetic Fields in the Frequency Range from 3 kHz to 300 GHz", Safety Code 6.
- [3] Federal Communications Commission, "Evaluating Compliance with FCC Guidelines for Human Exposure to Radio frequency Electromagnetic Fields", OET Bulletin 65, Supplement C (Edition 01-01), FCC, Washington, D.C.: June 2001.
- [4] Industry Canada, "Evaluation Procedure for Mobile and Portable Radio Transmitters with respect to Health Canada's Safety Code 6 for Exposure of Humans to Radio Frequency Fields", Radio Standards Specification RSS-102 Issue 1 (Provisional): September 1999.
- [5] IEEE Standards Coordinating Committee 34, Std 1528-200X, "DRAFT Recommended Practice for Determining the Spatial-Peak Specific Absorption Rate (SAR) in the Human Body Due to Wireless Communications Devices: Experimental Techniques".
- [6] W. Gander, *Computermathematick*, Birkhaeuser, Basel: 1992.

APPENDIX A - SAR MEASUREMENT DATA

Itronix Corporation FCC ID: KBCIX260AC750

SAM Phantom; Flat Section; Position: (0°,0°)
 Probe: ET3DV6 - SN1387; ConvF(5.00,5.00,5.00); Crest factor: 2.0
 1900 MHz Muscle: $\sigma = 1.51 \text{ mho/m}$ $\epsilon_r = 53.3$ $\rho = 1.00 \text{ g/cm}^3$
 Coarse: Dx = 15.0, Dy = 15.0, Dz = 10.0
 Cube 5x5x7; Powerdrift: -0.20 dB
 SAR (1g): 1.04 mW/g, SAR (10g): 0.507 mW/g

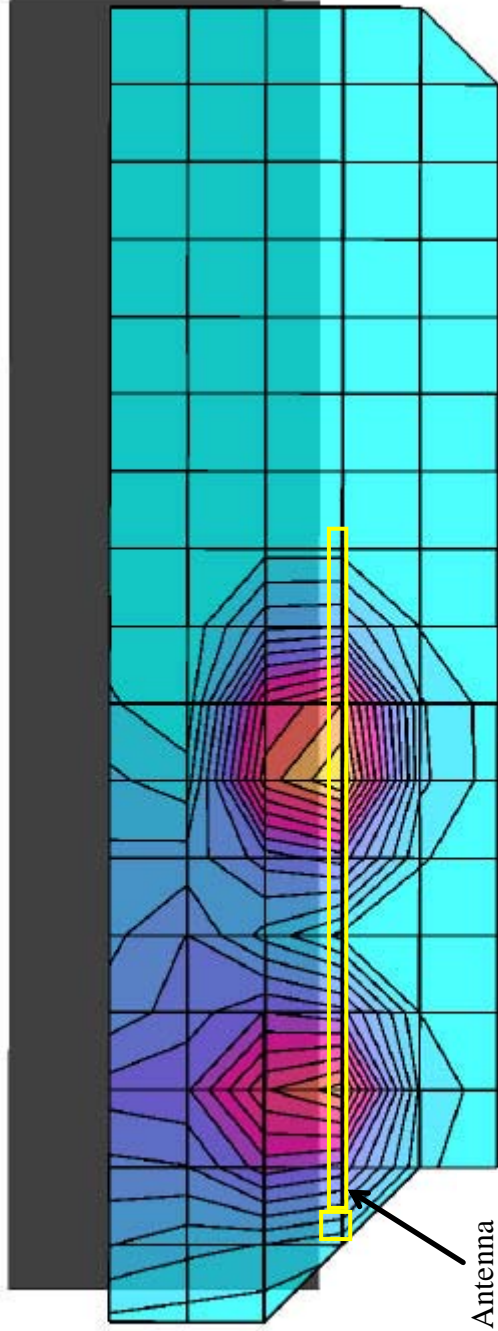
Body SAR - Back of LCD Display (Closed) - Antenna Parallel to Planar Phantom (Stowed Position)
 0.0 cm Separation Distance from Back of LCD Display to Planar Phantom
 Itronix IX260 Rugged Laptop PC
 with Sierra Wireless AirCard 750 PCS GSM/GPRS Modem Card
 PCS GPRS Mode
 Channel 661 [1880.00 MHz]
 Conducted Power: 27.9 dBm
 Ambient Temp: 22.2°C; Fluid Temp: 21.4°C
 Date Tested: October 31, 2002



Itronix Corporation FCC ID: KBCIX260AC750

SAM Phantom; Flat Section; Position: (0°,0°)
 Probe: ET3DV6 - SN1387; ConvF(5.00,5.00,5.00); Crest factor: 2.0
 1900 MHz Muscle: $\sigma = 1.51 \text{ mho/m}$ $\epsilon_r = 53.3$ $\rho = 1.00 \text{ g/cm}^3$
 Coarse: Dx = 15.0, Dy = 15.0, Dz = 10.0
 Cube 5x5x7; Powerdrift: -0.12 dB
 SAR (1g): 1.38 mW/g, SAR (10g): 0.705 mW/g

Body SAR - Back of LCD Display (Closed) - Antenna Parallel to Planar Phantom (Stowed Position)
 0.0 cm Separation Distance from Back of LCD Display to Planar Phantom
 Itronix IX260 Rugged Laptop PC
 with Sierra Wireless AirCard 750 PCS GSM/GPRS Modem Card
 PCS GPRS Mode
 Channel 512 [1850.25 MHz]
 Conducted Power: 27.9 dBm
 Ambient Temp: 22.2°C; Fluid Temp: 21.4°C
 Date Tested: October 31, 2002



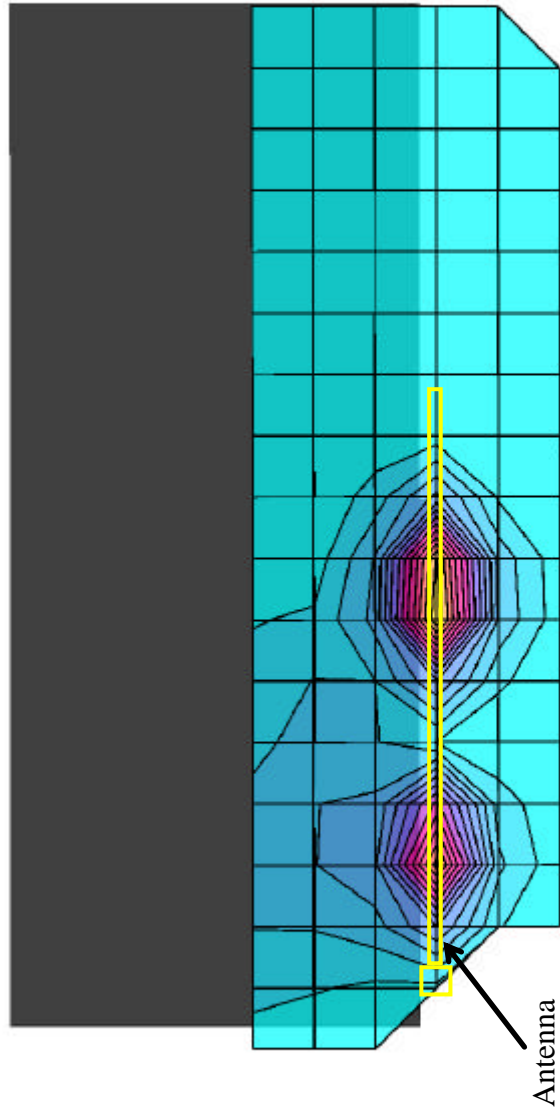
SAR_{tot} [mW/g]

1.12E+0
9.48E-1
7.75E-1
6.03E-1
4.31E-1
2.58E-1
8.61E-2

Itronix Corporation FCC ID: KBCIX260AC750

SAM Phantom; Flat Section; Position: (270°,0°)
 Probe: ET3DV6 - SN1387; ConvF(5.00,5.00,5.00); Crest factor: 2.0
 1900 MHz Muscle: $\sigma = 1.51 \text{ mho/m}$ $\epsilon_r = 53.3$ $\rho = 1.00 \text{ g/cm}^3$
 Coarse: Dx = 15.0, Dy = 15.0, Dz = 10.0
 Cube 5x5x7; Powerdrift: -0.07 dB
 SAR (1g): 1.51 mW/g, SAR (10g): 0.737 mW/g

Body SAR - Back of LCD Display (Closed) - Antenna Parallel to Planar Phantom (Stowed Position)
 0.0 cm Separation Distance from Back of LCD Display to Planar Phantom
 Itronix IX260 Rugged Laptop PC
 with Sierra Wireless AirCard 750 PCS GSM/GPRS Modem Card
 PCS GPRS Mode
 Channel 810 [1909.875 MHz]
 Conducted Power: 27.8 dBm
 Ambient Temp: 22.2°C; Fluid Temp: 21.4°C
 Date Tested: October 31, 2002



Itronix Corporation FCC ID: KBCIX260AC750

SAM Phantom; Flat Section

Probe: ET3DV6 - SN1387; ConvF(5.00,5.00,5.00); Crest factor: 2.0
1900 MHz Muscle: $\sigma = 1.51$ mho/m $\epsilon_r = 53.3$ $\rho = 1.00$ g/cm³

Z-Axis Extrapolation at Peak SAR Location

Body SAR - Back of LCD Display (Closed) - Antenna Parallel to Planar Phantom (Stowed Position)
0.0 cm Separation Distance from Back of LCD Display to Planar Phantom
Itronix IX260 Rugged Laptop PC

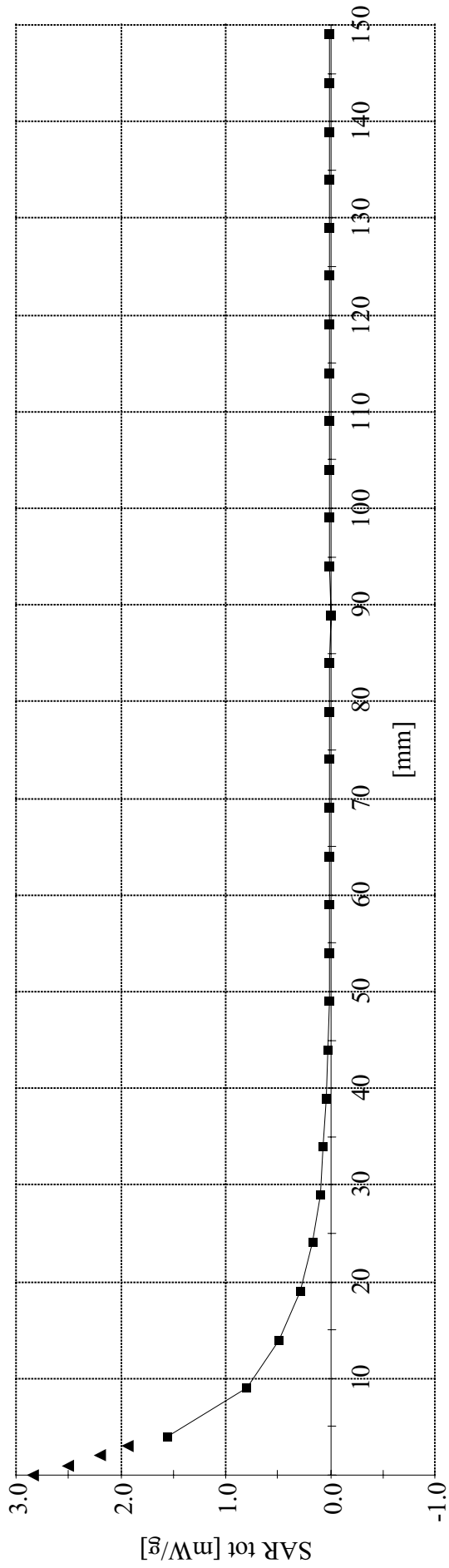
with Sierra Wireless AirCard 750 PCS GSM/GPRS Modem Card
PCS GPRS Mode

Channel 810 [1909.875 MHz]

Conducted Power: 27.8 dBm

Ambient Temp: 22.2°C; Fluid Temp: 21.4°C

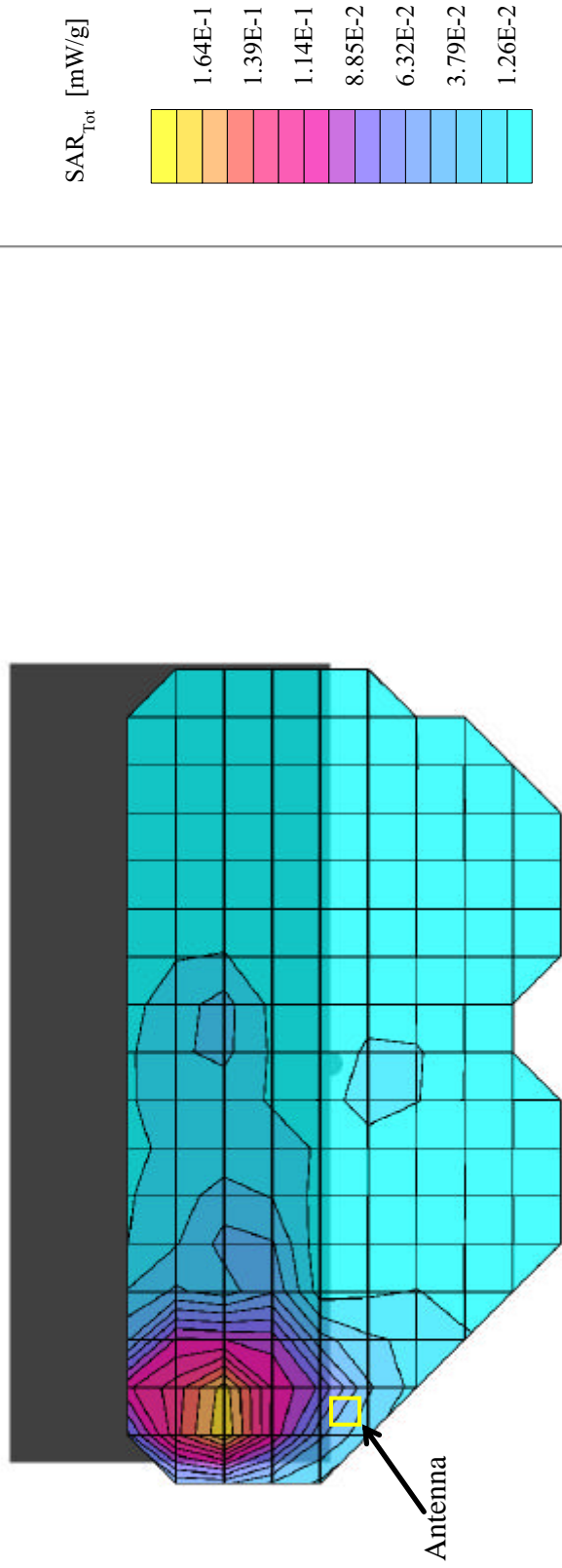
Date Tested: October 31, 2002



Itronix Corporation FCC ID: KBCIX260AC750

SAM Phantom; Flat Section; Position: (270°,0°)
 Probe: ET3DV6 - SN1387; ConvF(5.00,5.00,5.00); Crest factor: 2.0
 1900 MHz Muscle: $\sigma = 1.51 \text{ mho/m}$ $\epsilon_r = 53.3$ $\rho = 1.00 \text{ g/cm}^3$
 Coarse: Dx = 15.0, Dy = 15.0, Dz = 10.0
 Cube 5x5x7; Powerdrift: -0.16 dB
 SAR (1g): 0.191 mW/g, SAR (10g): 0.109 mW/g

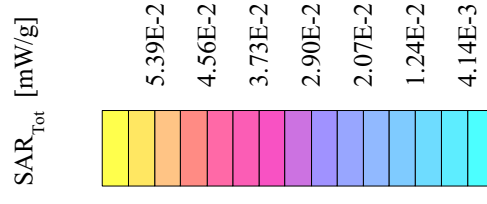
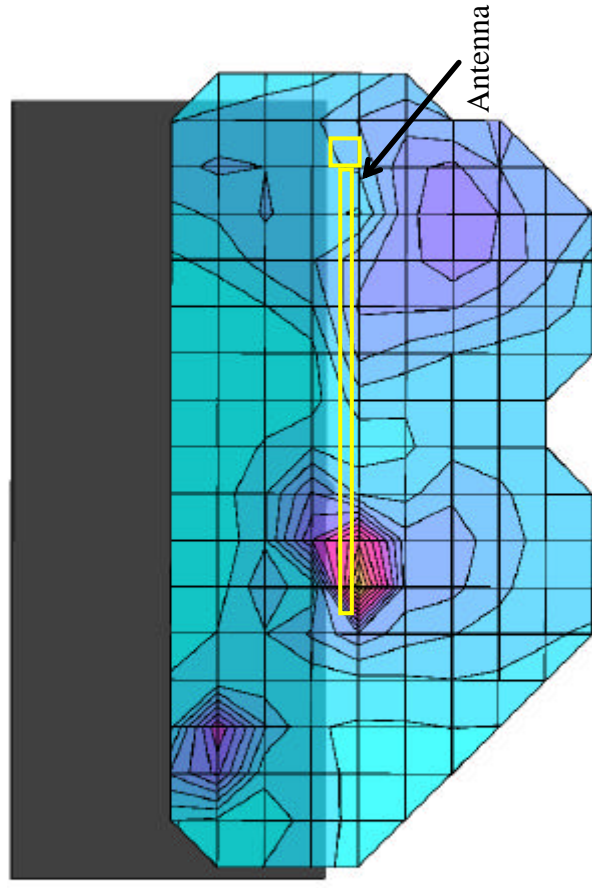
Body SAR - Back of LCD Display (Closed) - Antenna Perpendicular to Planar Phantom (180°)
 0.0 cm Separation Distance from Back of LCD Display to Planar Phantom
 Itronix IX260 Rugged Laptop PC
 with Sierra Wireless AirCard 750 PCS GSM/GPRS Modem Card
 PCS GPRS Mode
 Channel 661 [1880.00 MHz]
 Conducted Power: 27.9 dBm
 Ambient Temp: 22.2°C; Fluid Temp: 21.4°C
 Date Tested: October 31, 2002



Itronix Corporation FCC ID: KBCIX260AC750

SAM Phantom; Flat Section; Position: (270°, 0°)
 Probe: ET3DV6 - SN1387; ConvF(5.00,5.00,5.00); Crest factor: 2.0
 1900 MHz Muscle: $\sigma = 1.51 \text{ mho/m}$ $\epsilon_r = 53.3$ $\rho = 1.00 \text{ g/cm}^3$
 Coarse: Dx = 15.0, Dy = 15.0, Dz = 10.0
 Cube 5x5x7; Powerdrift: -0.00 dB
 SAR (1g): 0.0628 mW/g, SAR (10g): 0.0305 mW/g

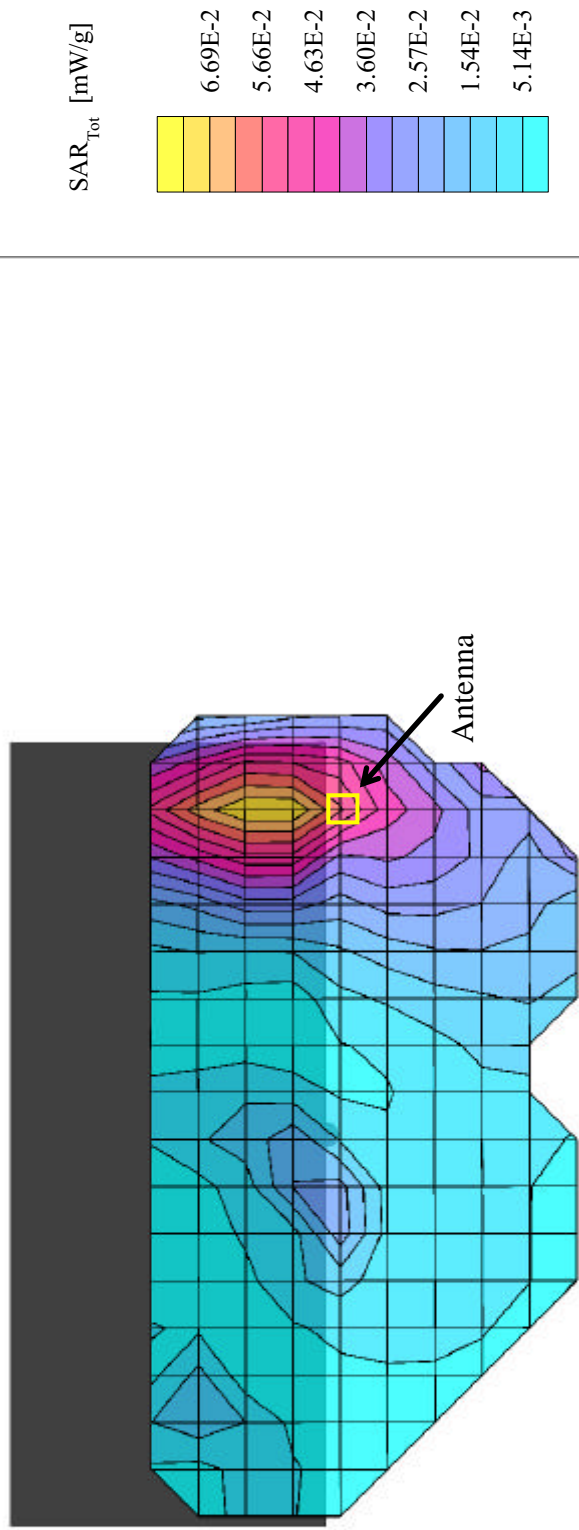
Body SAR - Bottom of Laptop PC (LCD Display Closed) - Antenna Parallel to Planar Phantom (Stowed Position)
 0.0 cm Separation Distance from Bottom of Laptop PC to Planar Phantom
 Itronix IX260 Rugged Laptop PC
 with Sierra Wireless AirCard 750 PCS GSM/GPRS Modem Card
 PCS GPRS Mode
 Channel 661 [1880.00 MHz]
 Conducted Power: 27.9 dBm
 Ambient Temp: 22.2°C; Fluid Temp: 21.4°C
 Date Tested: October 31, 2002



Itronix Corporation FCC ID: KBCIX260AC750

SAM Phantom; Flat Section; Position: (270°, 0°)
 Probe: ET3DV6 - SN1387; ConvF(5.00,5.00,5.00); Crest factor: 2.0
 1900 MHz Muscle: $\sigma = 1.51 \text{ mho/m}$ $\epsilon_r = 53.3$ $\rho = 1.00 \text{ g/cm}^3$
 Coarse: Dx = 15.0, Dy = 15.0, Dz = 10.0
 Cube 5x5x7; Powerdrift: -0.10 dB
 SAR (1g): 0.0760 mW/g, SAR (10g): 0.0454 mW/g

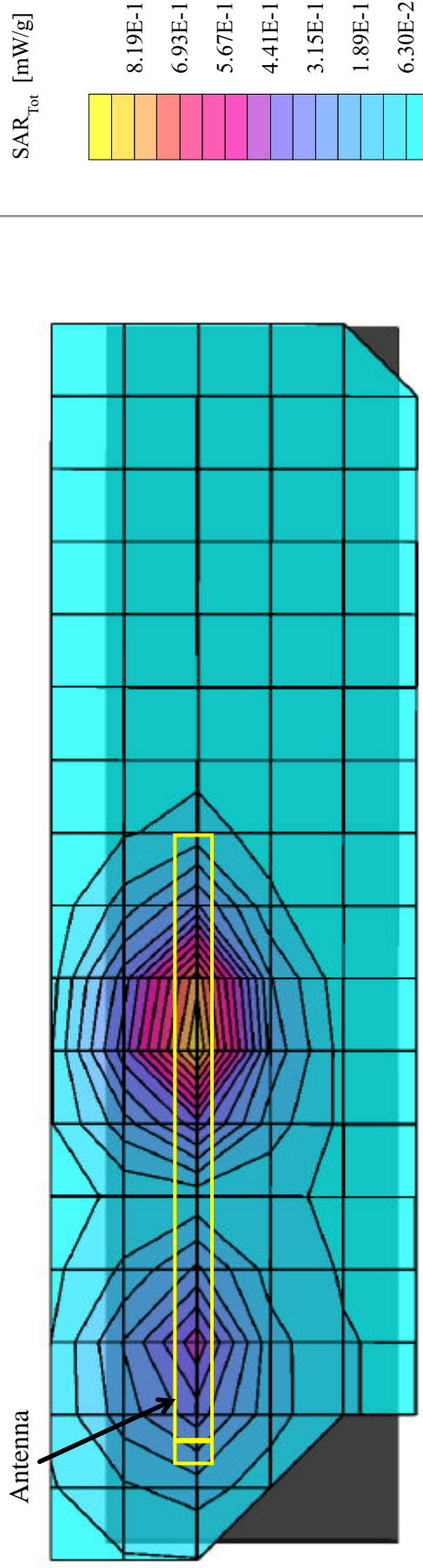
Body SAR - Bottom of Laptop PC (LCD Display Closed) - Antenna Perpendicular to Planar Phantom (Extended Position)
 0.0 cm Separation Distance from Bottom of Laptop PC to Planar Phantom
 Itronix IX260 Rugged Laptop PC
 with Sierra Wireless AirCard 750 PCS GSM/GPRS Modem Card
 PCS GPRS Mode
 Channel 661 [1880.00 MHz]
 Conducted Power: 27.9 dBm
 Ambient Temp: 22.2°C; Fluid Temp: 21.4°C
 Date Tested: October 31, 2002



Itronix Corporation FCC ID: KBCIX260AC750

SAM Phantom; Flat Section; Position: (0°,0°)
 Probe: ET3DV6 - SN1387; ConvF(5.00,5.00,5.00); Crest factor: 2.0
 1900 MHz Muscle: $\sigma = 1.51 \text{ mho/m}$ $\epsilon_r = 53.3$ $\rho = 1.00 \text{ g/cm}^3$
 Coarse: Dx = 15.0, Dy = 15.0, Dz = 10.0
 Cube 5x5x7; Powerdrift: -0.00 dB
 SAR (1g): 0.916 mW/g, SAR (10g): 0.483 mW/g

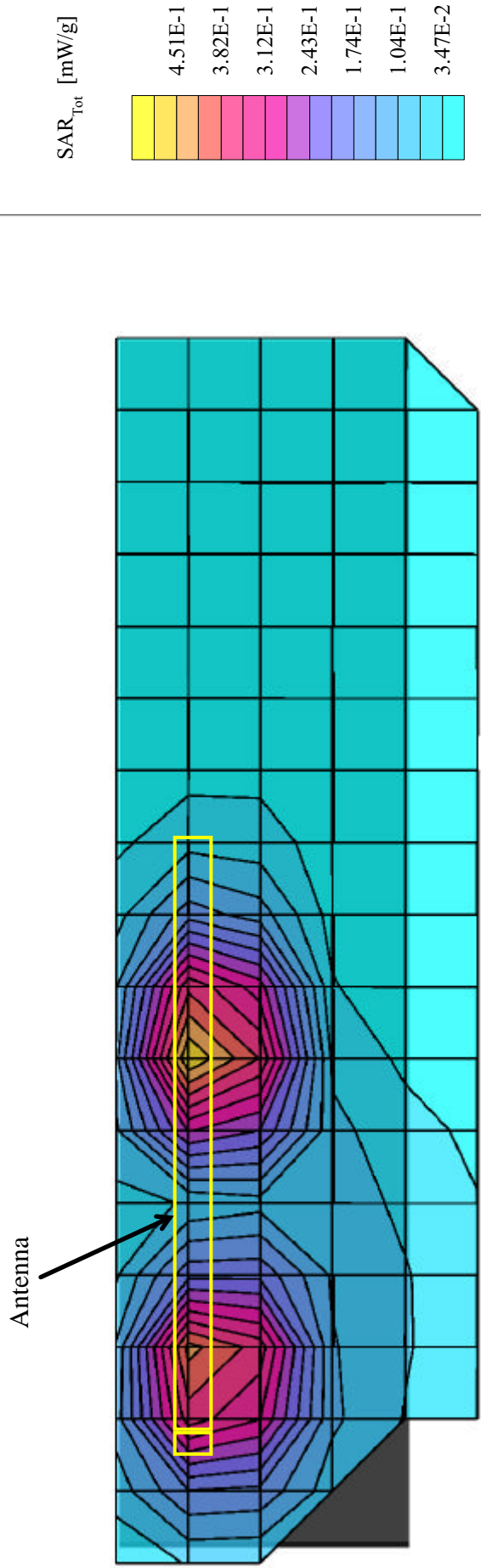
Body SAR - Right Side of LCD Display (Closed) - Antenna Parallel to Planar Phantom (Stowed Position)
 1.5 cm Separation Distance from Antenna to Planar Phantom
 Itronix IX260 Rugged Laptop PC
 with Sierra Wireless AirCard 750 PCS GSM/GPRS Modem Card
 PCS GPRS Mode
 Channel 661 [1880.00 MHz]
 Conducted Power: 27.9 dBm
 Ambient Temp: 22.2°C; Fluid Temp: 21.4°C
 Date Tested: October 31, 2002



Itronix Corporation FCC ID: KBCIX260AC750

SAM Phantom; Flat Section; Position: (0°,0°)
 Probe: ET3DV6 - SN1387; ConvF(5.00,5.00,5.00); Crest factor: 2.0
 1900 MHz Muscle: $\sigma = 1.51 \text{ mho/m}$ $\epsilon_r = 53.3$ $\rho = 1.00 \text{ g/cm}^3$
 Coarse: Dx = 15.0, Dy = 15.0, Dz = 10.0
 Cube 5x5x7; Powerdrift: -0.05 dB
 SAR (1g): 0.902 mW/g, SAR (10g): 0.489 mW/g

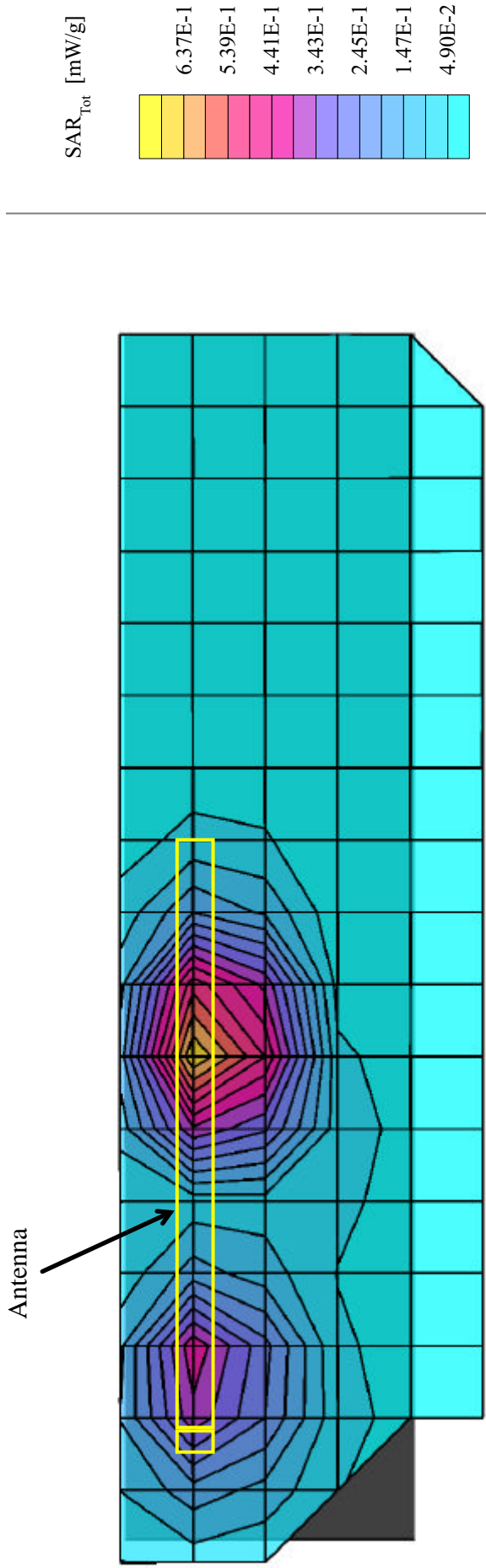
Body SAR - Right Side of LCD Display (Closed) - Antenna Parallel to Planar Phantom (Stowed Position)
 1.5 cm Separation Distance from Antenna to Planar Phantom
 Itronix IX260 Rugged Laptop PC
 with Sierra Wireless AirCard 750 PCS GSM/GPRS Modem Card
 PCS GPRS Mode
 Channel 510 [1850.25 MHz]
 Conducted Power: 27.9 dBm
 Ambient Temp: 22.2°C; Fluid Temp: 21.4°C
 Date Tested: October 31, 2002



Itronix Corporation FCC ID: KBCIX260AC750

SAM Phantom; Flat Section; Position: (0°,0°)
Probe: ET3DV6 - SN1387; ConvF(5.00,5.00,5.00); Crest factor: 2.0
1900 MHz Muscle: $\sigma = 1.51 \text{ mho/m}$, $\epsilon_r = 53.3$, $\rho = 1.00 \text{ g/cm}^3$
Coarse: Dx = 15.0, Dy = 15.0, Dz = 10.0
Cube 5x5x7; Powerdrift: -0.13 dB
SAR (1g): 0.751 mW/g, SAR (10g): 0.403 mW/g

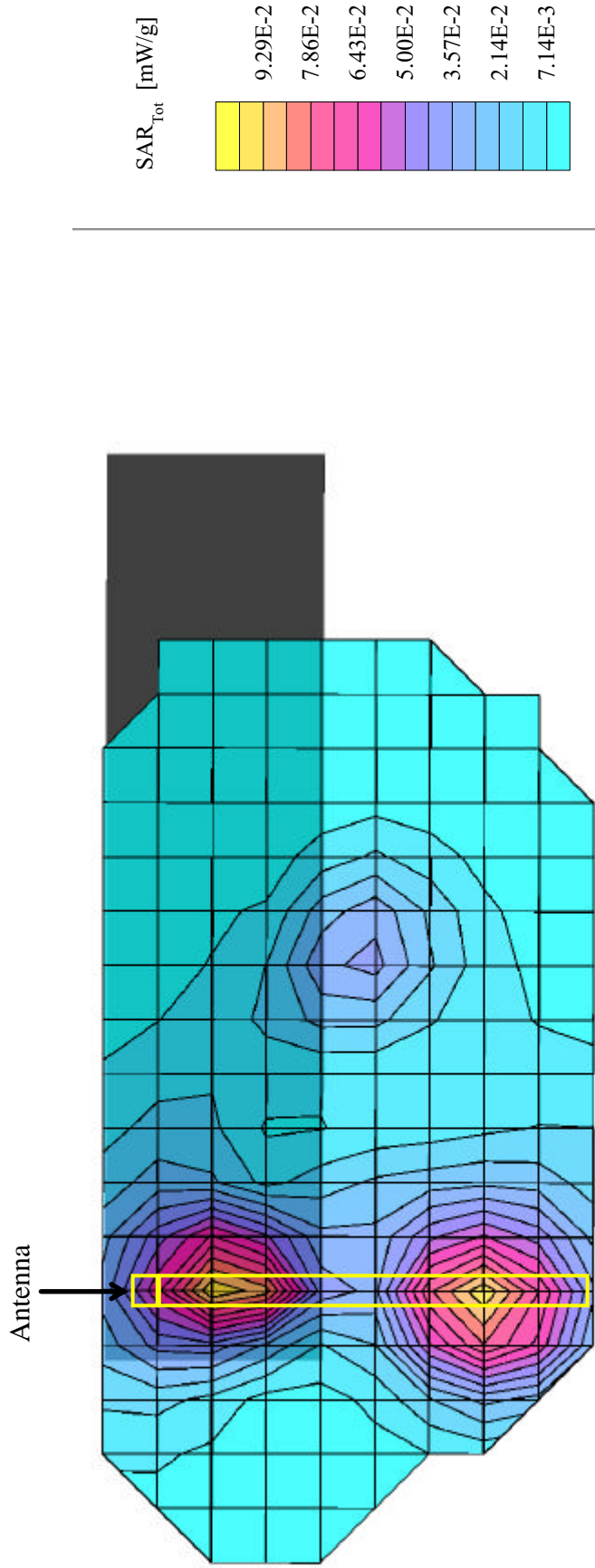
Body SAR - Right Side of LCD Display (Closed) - Antenna Parallel to Planar Phantom (Stowed Position)
1.5 cm Separation Distance from Antenna to Planar Phantom
Itronix IX260 Rugged Laptop PC
with Sierra Wireless AirCard 750 PCS GSM/GPRS Modem Card
PCS GPRS Mode
Channel 810 [1909.875 MHz]
Conducted Power: 27.8 dBm
Ambient Temp: 22.2°C; Fluid Temp: 21.4°C
Date Tested: October 31, 2002



Itronix Corporation FCC ID: KBCIX260AC750

SAM Phantom; Flat Section; Position: (0°,0°)
 Probe: ET3DV6 - SN1387; ConvF(5.00,5.00,5.00); Crest factor: 2.0
 1900 MHz Muscle: $\sigma = 1.51 \text{ mho/m}$; $\epsilon_r = 53.3$; $\rho = 1.00 \text{ g/cm}^3$
 Coarse: Dx = 15.0, Dy = 15.0, Dz = 10.0
 Cube 5x5x7; Powerdrift: -0.17 dB
 SAR (1g): 0.105 mW/g, SAR (10g): 0.0588 mW/g

Body SAR - Right Side of LCD Display (Closed) - Antenna Parallel to Planar Phantom (Extended Position)
 1.5 cm Separation Distance from Antenna to Planar Phantom
 Itronix IX260 Rugged Laptop PC
 with Sierra Wireless AirCard 750 PCS GSM/GPRS Modem Card
 PCS GPRS Mode
 Channel 661 [1880.00 MHz]
 Conducted Power: 27.9 dBm
 Ambient Temp: 22.2°C; Fluid Temp: 21.4°C
 Date Tested: October 31, 2002



APPENDIX B - SYSTEM CHECK DATA

System Performance Check - 1800MHz Dipole

SAM Phantom; Flat Section

Probe: ET3DV6 - SNI1387; ConvF(5.40,5.40,5.40); Crest factor: 1.0; 1800 MHz Brain: $\sigma = 1.35 \text{ mho/m}$ $\epsilon_r = 40.9$ $\rho = 1.00 \text{ g/cm}^3$

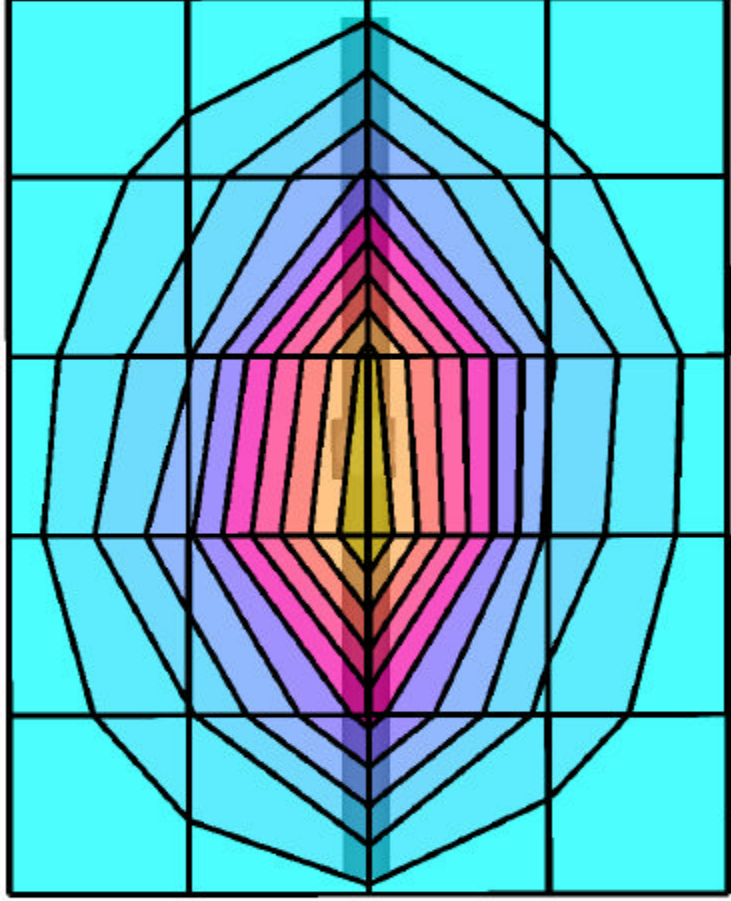
Cube 5x5x7; Peak: 18.2 mW/g, SAR (1g): 9.61 mW/g, SAR (10g): 5.00 mW/g, (Worst-case extrapolation)

Penetration depth: 8.3 (7.7, 9.5) [mm]; Powerdrift: 0.04 dB

Ambient Temp: 22.2°C; Fluid Temp: 21.4°C

Forward Conducted Power: 250 mW

Date Tested: October 31, 2002



APPENDIX C - SYSTEM VALIDATION

Schmid & Partner Engineering AG

Zeughausstrasse 43, 8004 Zurich, Switzerland, Phone +41 1 245 97 00, Fax +41 1 245 97 79

Calibration Certificate

1800 MHz System Validation Dipole

Type:

D1800V2

Serial Number:

247

Place of Calibration:

Zurich

Date of Calibration:

June 20, 2001

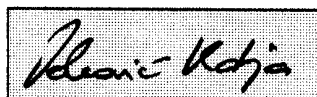
Calibration Interval:

24 months

Schmid & Partner Engineering AG hereby certifies, that this device has been calibrated on the date indicated above. The calibration was performed in accordance with specifications and procedures of Schmid & Partner Engineering AG.

Wherever applicable, the standards used in the calibration process are traceable to international standards. In all other cases the standards of the Laboratory for EMF and Microwave Electronics at the Swiss Federal Institute of Technology (ETH) in Zurich, Switzerland have been applied.

Calibrated by:



Approved by:



DASY

Dipole Validation Kit

Type: D1800V2

Serial: 247

Manufactured: August 25, 1999

Calibrated: June 20, 2001

1. Measurement Conditions

The measurements were performed in the flat section of the new generic twin phantom filled with head simulating glycol solution of the following electrical parameters at 1800 MHz:

Relative Dielectricity	40.0	$\pm 5\%$
Conductivity	1.36 mho/m	$\pm 5\%$

The DASY3 System (Software version 3.1c) with a dosimetric E-field probe ET3DV6 (SN:1507, Conversion factor 5.57 at 1800 MHz) was used for the measurements.

The dipole was mounted on the small tripod so that the dipole feedpoint was positioned below the center marking of the flat phantom section and the dipole was oriented parallel to the body axis (the long side of the phantom). The standard measuring distance was 10mm from dipole center to the solution surface. The included distance holder was used during measurements for accurate distance positioning.

The coarse grid with a grid spacing of 15mm was aligned with the dipole. The 5x5x7 fine cube was chosen for cube integration. Probe isotropy errors were cancelled by measuring the SAR with normal and 90° turned probe orientations and averaging.

The dipole input power (forward power) was 250mW $\pm 3\%$. The results are normalized to 1W input power.

2. SAR Measurement

Standard SAR-measurements were performed with the phantom according to the measurement conditions described in section 1. The results have been normalized to a dipole input power of 1W (forward power). The resulting averaged SAR-values are:

averaged over 1 cm ³ (1 g) of tissue:	38.64 mW/g
averaged over 10 cm ³ (10 g) of tissue:	20.08 mW/g

Note: If the liquid parameters for validation are slightly different from the ones used for initial calibration, the SAR-values will be different as well. The estimated sensitivities of SAR-values and penetration depths to the liquid parameters are listed in the DASY Application Note 4: 'SAR Sensitivities'.

3. Dipole Impedance and return loss

The impedance was measured at the SMA-connector with a network analyzer and numerically transformed to the dipole feedpoint. The transformation parameters from the SMA-connector to the dipole feedpoint are:

Electrical delay: **1.208 ns** (one direction)
Transmission factor: **0.995** (voltage transmission, one direction)

The dipole was positioned at the flat phantom sections according to section 1 and the distance holder was in place during impedance measurements.

Feedpoint impedance at 1800 MHz: $\text{Re}\{Z\} = 52.4 \Omega$

$\text{Im}\{Z\} = 0.7 \Omega$

Return Loss at 1800 MHz **-32.1 dB**

4. Measurement Conditions

The measurements were performed in the flat section of the new generic twin phantom filled with brain sugar-water solution of the following electrical parameters at 1800 MHz:

Relative Dielectricity **40.1** $\pm 5\%$
Conductivity **1.71 mho/m** $\pm 5\%$

The DASY3 System (Software version 3.1c) with a dosimetric E-field probe ET3DV6 (SN:1507, Conversion factor 5.63 at 1800 MHz) was used for the measurements.

The dipole was mounted on the small tripod so that the dipole feedpoint was positioned below the center marking of the flat phantom section and the dipole was oriented parallel to the body axis (the long side of the phantom). The standard measuring distance was 10mm from dipole center to the solution surface. The included distance holder was used during measurements for accurate distance positioning.

The coarse grid with a grid spacing of 15mm was aligned with the dipole. The 5x5x7 fine cube was chosen for cube integration. Probe isotropy errors were cancelled by measuring the SAR with normal and 90° turned probe orientations and averaging.

The dipole input power (forward power) was 250mW $\pm 3\%$. The results are normalized to 1W input power.

5. SAR Measurement

Standard SAR-measurements were performed with the phantom according to the measurement conditions described in section 4. The results have been normalized to a dipole input power of 1W (forward power). The resulting averaged SAR-values are:

averaged over 1 cm³ (1 g) of tissue: **43.6 mW/g**

averaged over 10 cm³ (10 g) of tissue: **21.6 mW/g**

Note: If the liquid parameters for validation are slightly different from the ones used for initial calibration, the SAR-values will be different as well. The estimated sensitivities of SAR-values and penetration depths to the liquid parameters are listed in the DASY Application Note 4: 'SAR Sensitivities'.

6. Handling

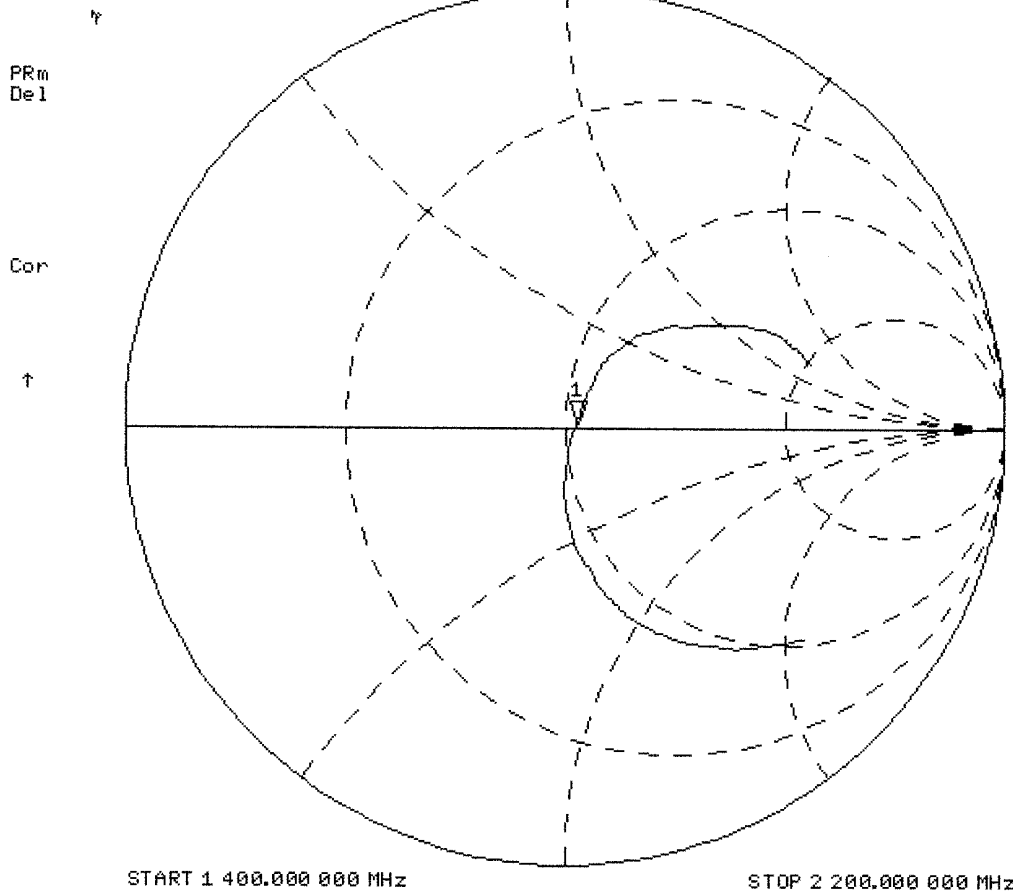
The dipole is made of standard semirigid coaxial cable. The center conductor of the feeding line is directly connected to the second arm of the dipole. The antenna is therefore short-circuited for DC-signals.

Do not apply excessive force to the dipole arms, because they might bend. If the dipole arms have to be bent back, take care to release stress to the soldered connections near the feedpoint; they might come off.

After prolonged use with 40W radiated power, only a slight warming of the dipole near the feedpoint can be measured.

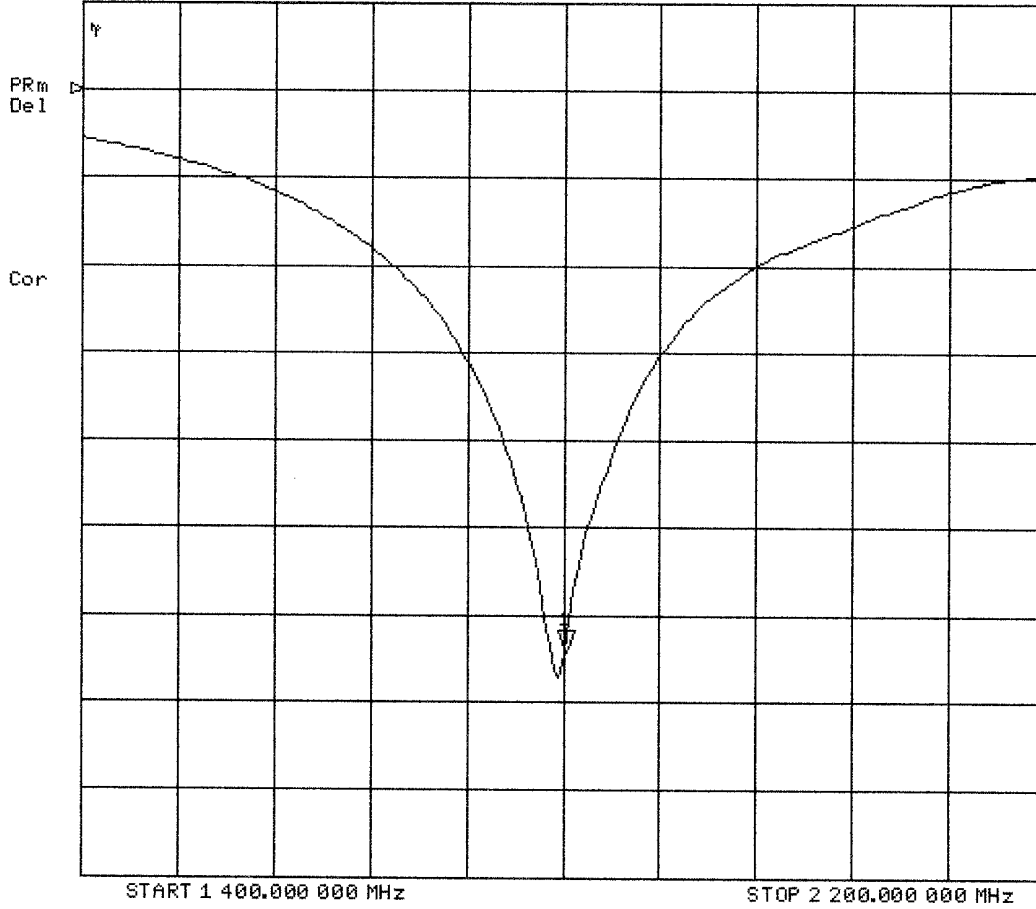
20 Jun 2001 15:31:17

[CH1] S11 1 U FS 1: 52.408 Ω 0.7441 Ω 65.796 pH 1 800.000 000 MHz



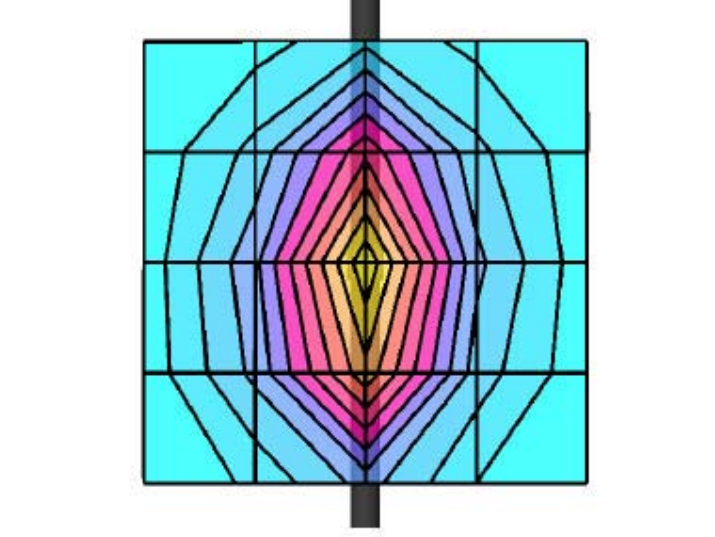
20 Jun 2001 15:31:04

CH1 S11 LOG 5 dB/REF 0 dB 1:-32.107 dB 1 800.000 000 MHz



Validation Dipole D1800V2 SN:247, d = 10 mm

Frequency: 1800 MHz; Antenna Input Power: 250 [mW]
Generic Twin Phantom; Flat Section; Grid Spacing: Dx = 15.0, Dy = 15.0, Dz = 10.0
Probe: ET3DV6 - SN1507; ConvF(5.57,5.57,5.57); Crest factor: 1.0; IEEE1528 1800 MHz : $\sigma = 1.36 \text{ mho/m}$ $\epsilon_r = 40.0$ $\rho = 1.00 \text{ g/cm}^3$
Cubes (2): Peak: 18.2 mW/g $\pm 0.04 \text{ dB}$, SAR (1g): 9.66 mW/g $\pm 0.03 \text{ dB}$, SAR (10g): 5.02 mW/g $\pm 0.03 \text{ dB}$, SAR (Worst-case extrapolation)
Penetration depth: 8.2 (7.6, 9.4) [mm]
Powerdrift: -0.01 dB



APPENDIX D - PROBE CALIBRATION

Schmid & Partner Engineering AG

Zeughausstrasse 43, 8004 Zurich, Switzerland, Phone +41 1 245 97 00, Fax +41 1 245 97 79

Calibration Certificate

Dosimetric E-Field Probe

Type:

ET3DV6

Serial Number:

1387

Place of Calibration:

Zurich

Date of Calibration:

February 22, 2002

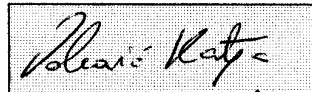
Calibration Interval:

12 months

Schmid & Partner Engineering AG hereby certifies, that this device has been calibrated on the date indicated above. The calibration was performed in accordance with specifications and procedures of Schmid & Partner Engineering AG.

Wherever applicable, the standards used in the calibration process are traceable to international standards. In all other cases the standards of the Laboratory for EMF and Microwave Electronics at the Swiss Federal Institute of Technology (ETH) in Zurich, Switzerland have been applied.

Calibrated by:



Approved by:



Probe ET3DV6

SN:1387

Manufactured:	September 21, 1999
Last calibration:	September 22, 1999
Recalibrated:	February 22, 2002

Calibrated for System DASY3

DASY3 - Parameters of Probe: ET3DV6 SN:1387

Sensitivity in Free Space

NormX	1.58 $\mu\text{V}/(\text{V}/\text{m})^2$
NormY	1.67 $\mu\text{V}/(\text{V}/\text{m})^2$
NormZ	1.67 $\mu\text{V}/(\text{V}/\text{m})^2$

Diode Compression

DCP X	97	mV
DCP Y	97	mV
DCP Z	97	mV

Sensitivity in Tissue Simulating Liquid

Head	900 MHz	$\epsilon_r = 41.5 \pm 5\%$	$\sigma = 0.97 \pm 5\%$ mho/m
Head	835 MHz	$\epsilon_r = 41.5 \pm 5\%$	$\sigma = 0.90 \pm 5\%$ mho/m
ConvF X	6.6 $\pm 9.5\%$ (k=2)		Boundary effect:
ConvF Y	6.6 $\pm 9.5\%$ (k=2)		Alpha 0.40
ConvF Z	6.6 $\pm 9.5\%$ (k=2)		Depth 2.38
Head	1800 MHz	$\epsilon_r = 40.0 \pm 5\%$	$\sigma = 1.40 \pm 5\%$ mho/m
Head	1900 MHz	$\epsilon_r = 40.0 \pm 5\%$	$\sigma = 1.40 \pm 5\%$ mho/m
ConvF X	5.4 $\pm 9.5\%$ (k=2)		Boundary effect:
ConvF Y	5.4 $\pm 9.5\%$ (k=2)		Alpha 0.57
ConvF Z	5.4 $\pm 9.5\%$ (k=2)		Depth 2.18

Boundary Effect

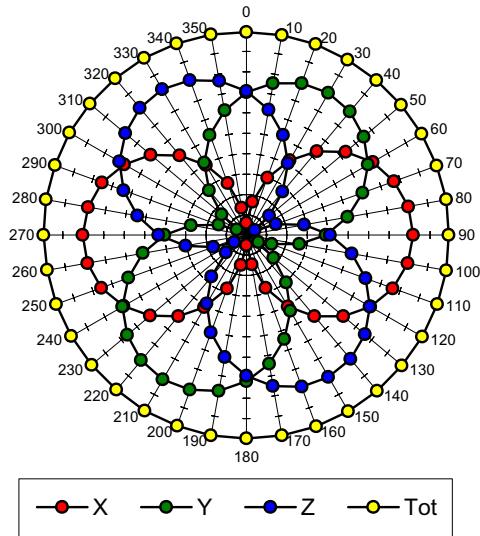
Head	900 MHz	Typical SAR gradient: 5 % per mm	
	Probe Tip to Boundary	1 mm	2 mm
	SAR _{be} [%] Without Correction Algorithm	9.7	5.4
	SAR _{be} [%] With Correction Algorithm	0.3	0.6
Head	1800 MHz	Typical SAR gradient: 10 % per mm	
	Probe Tip to Boundary	1 mm	2 mm
	SAR _{be} [%] Without Correction Algorithm	11.5	7.3
	SAR _{be} [%] With Correction Algorithm	0.1	0.3

Sensor Offset

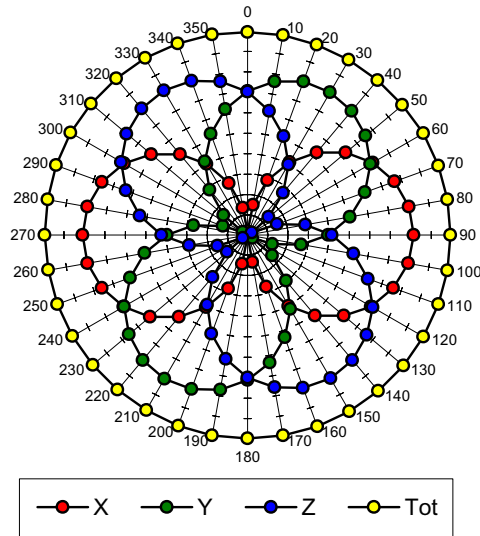
Probe Tip to Sensor Center	2.7	mm
Optical Surface Detection	1.3 \pm 0.2	mm

Receiving Pattern (ϕ , $\theta = 0^\circ$)

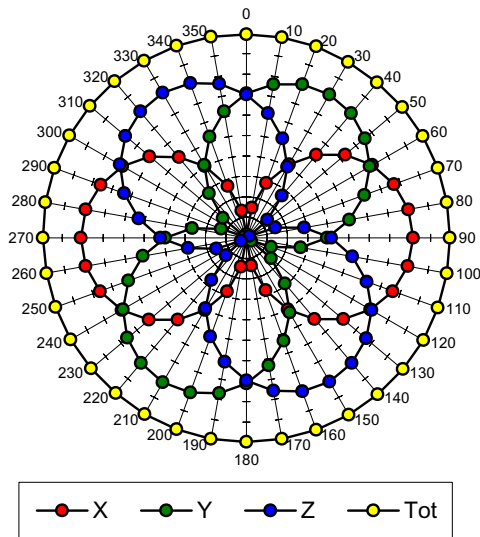
f = 30 MHz, TEM cell ifi110



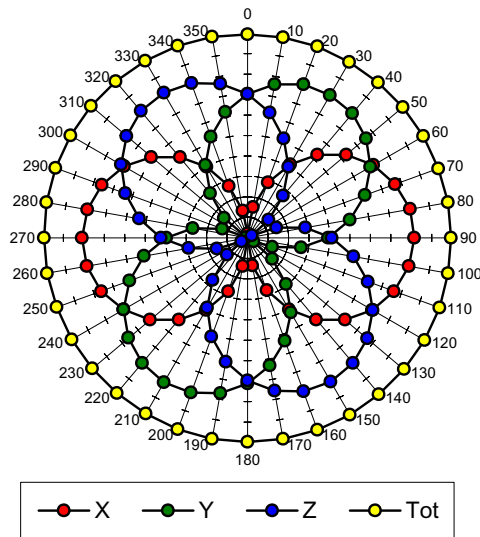
f = 100 MHz, TEM cell ifi110

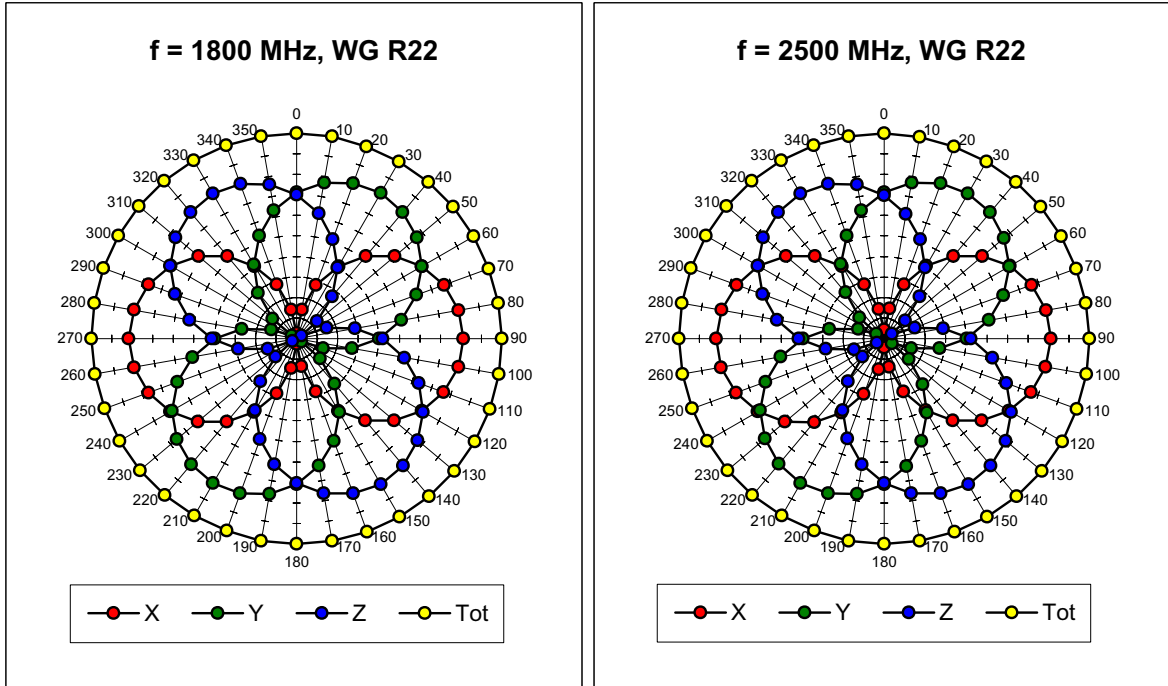


f = 300 MHz, TEM cell ifi110

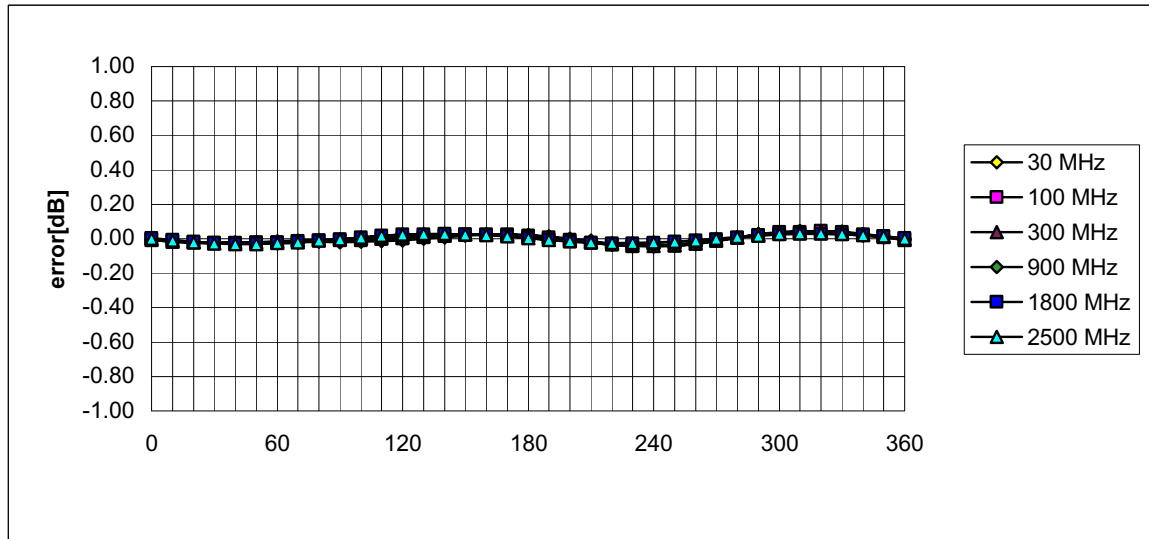


f = 900 MHz, TEM cell ifi110



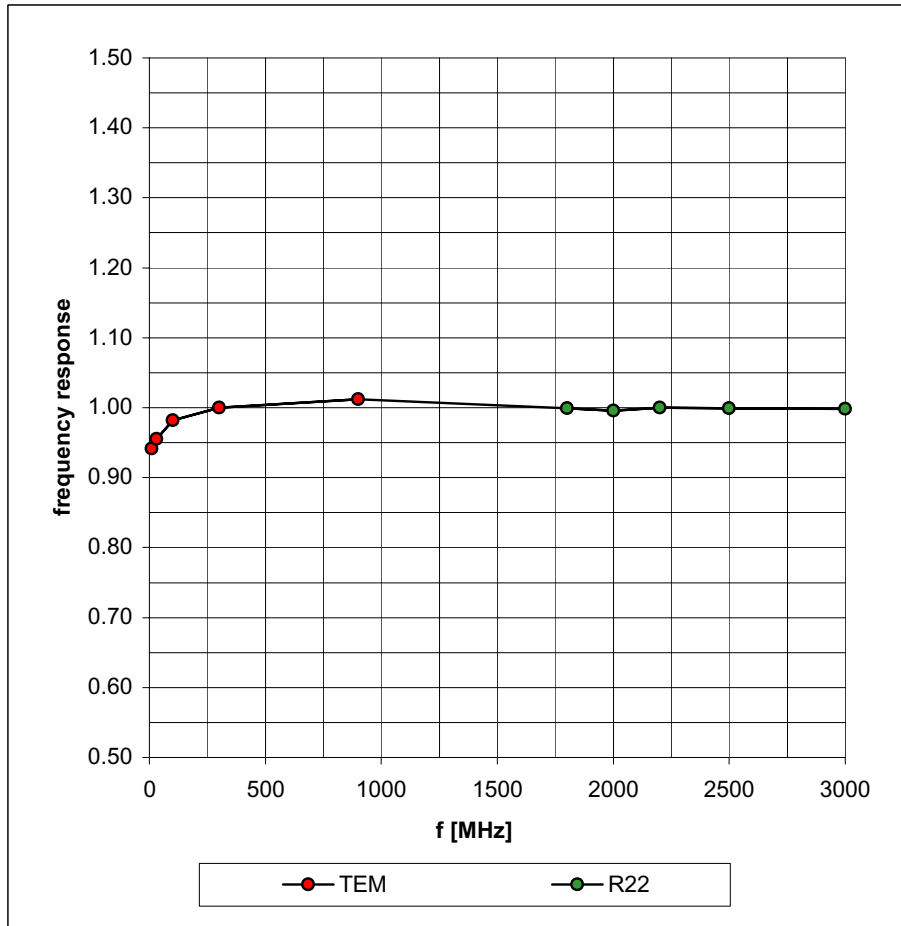


Isotropy Error (ϕ), $\theta = 0^\circ$

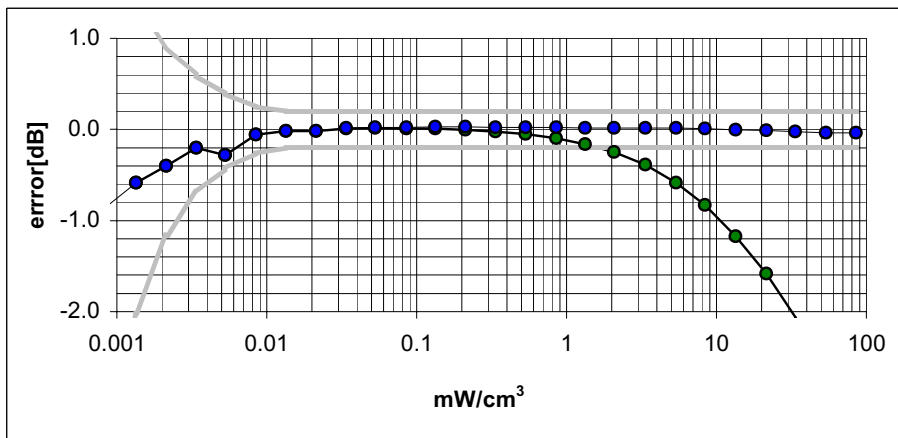
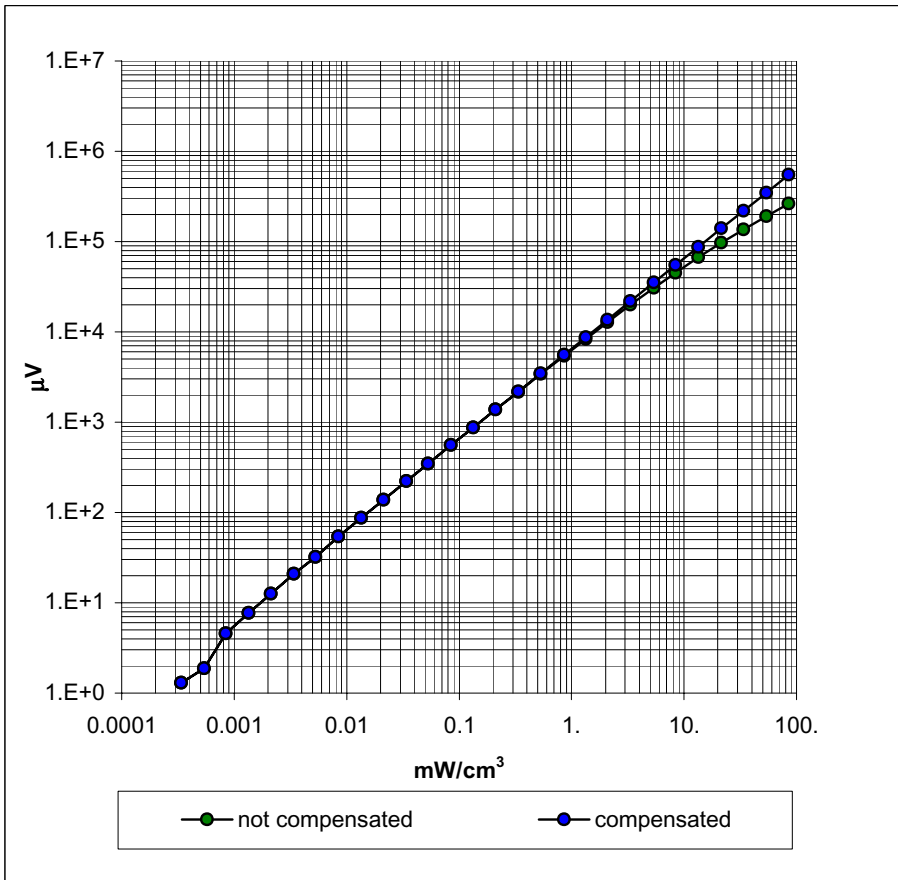


Frequency Response of E-Field

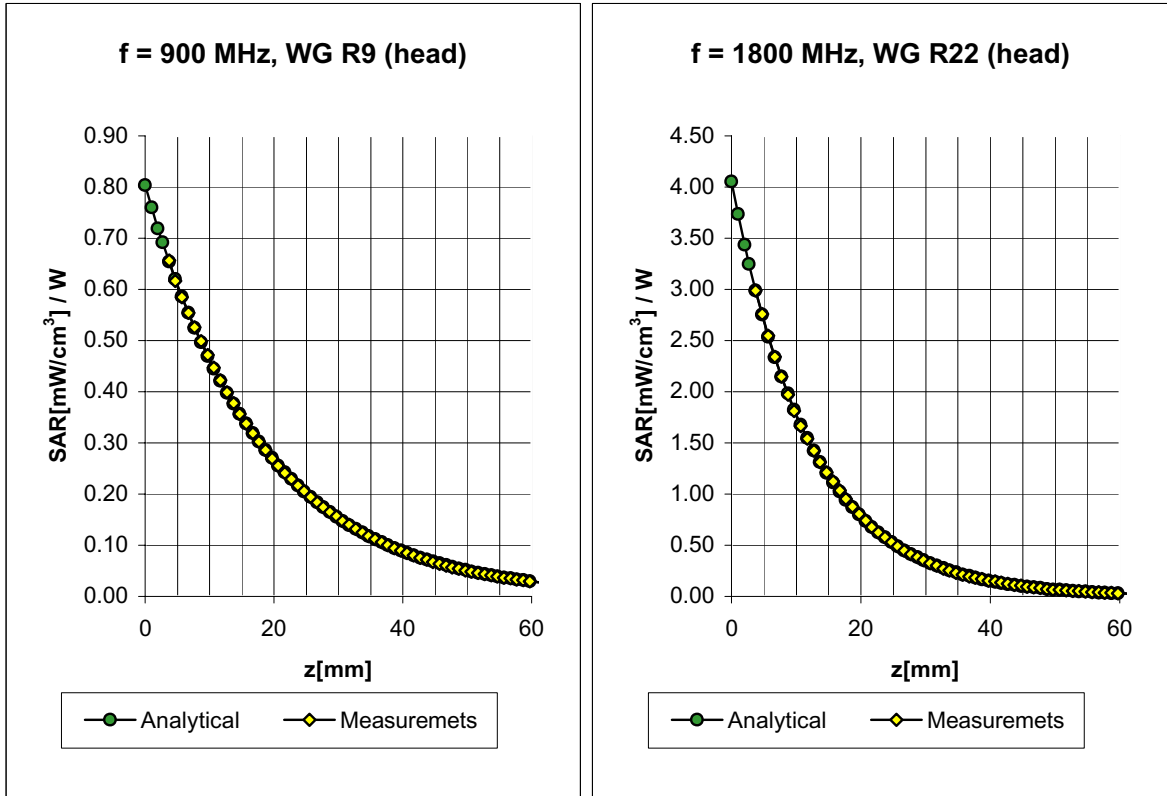
(TEM-Cell:ifi110, Waveguide R22)



Dynamic Range f(SAR_{brain}) (Waveguide R22)



Conversion Factor Assessment

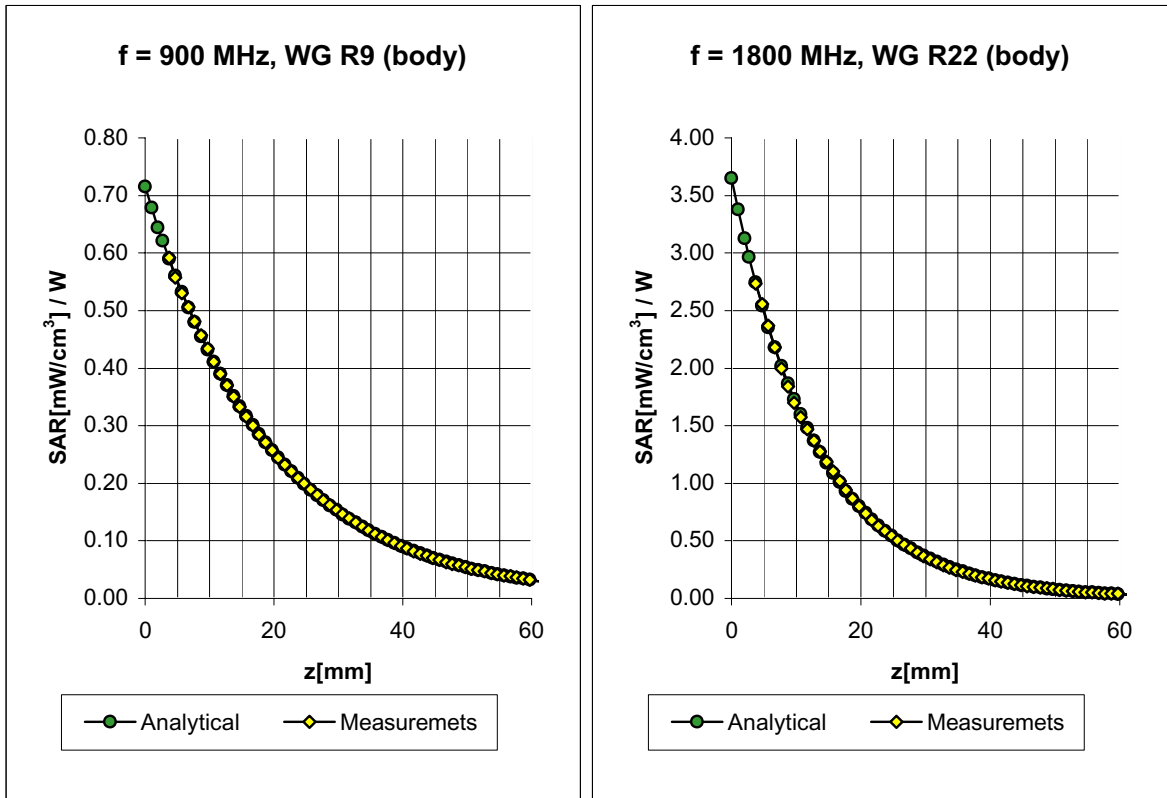


Head	900 MHz	$\epsilon_r = 41.5 \pm 5\%$	$\sigma = 0.97 \pm 5\% \text{ mho/m}$
Head	835 MHz	$\epsilon_r = 41.5 \pm 5\%$	$\sigma = 0.90 \pm 5\% \text{ mho/m}$
	ConvF X	6.6 $\pm 9.5\%$ (k=2)	Boundary effect:
	ConvF Y	6.6 $\pm 9.5\%$ (k=2)	Alpha 0.40
	ConvF Z	6.6 $\pm 9.5\%$ (k=2)	Depth 2.38
Head	1800 MHz	$\epsilon_r = 40.0 \pm 5\%$	$\sigma = 1.40 \pm 5\% \text{ mho/m}$
Head	1900 MHz	$\epsilon_r = 40.0 \pm 5\%$	$\sigma = 1.40 \pm 5\% \text{ mho/m}$
	ConvF X	5.4 $\pm 9.5\%$ (k=2)	Boundary effect:
	ConvF Y	5.4 $\pm 9.5\%$ (k=2)	Alpha 0.57
	ConvF Z	5.4 $\pm 9.5\%$ (k=2)	Depth 2.18

ET3DV6 SN:1387

February 22, 2002

Conversion Factor Assessment



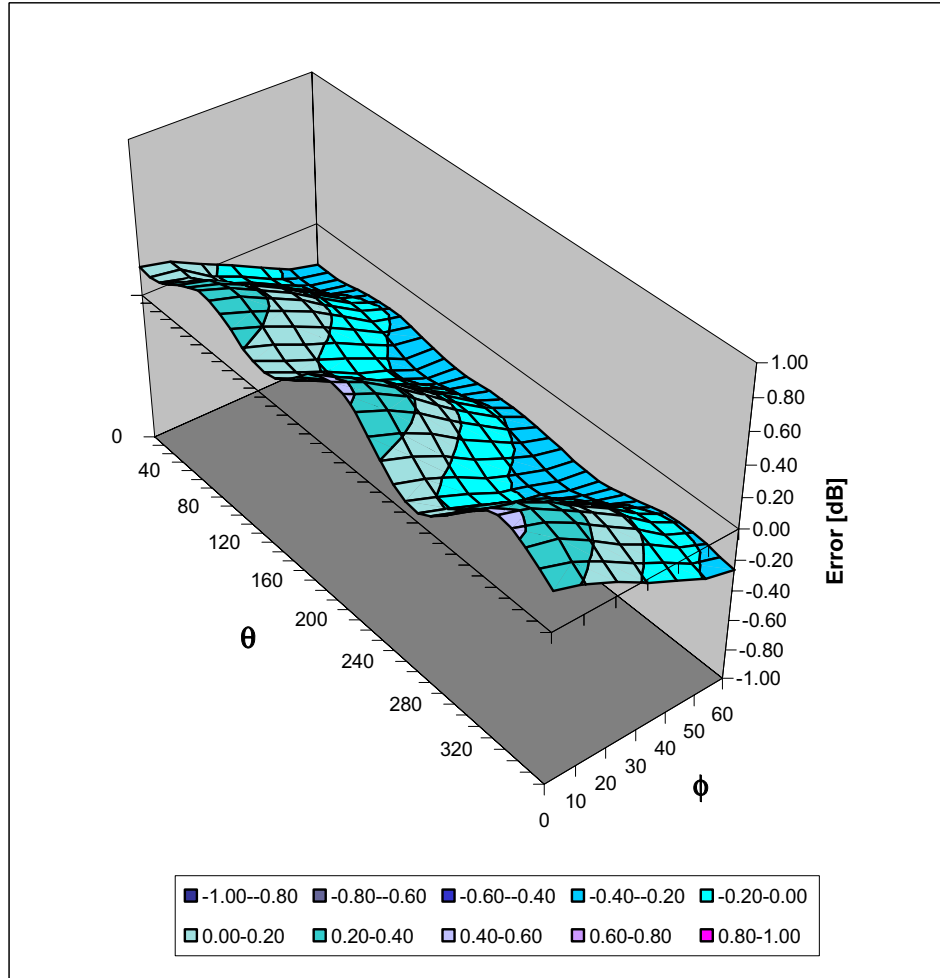
Body	900 MHz	$\epsilon_r = 55.0 \pm 5\%$	$\sigma = 1.05 \pm 5\% \text{ mho/m}$
Body	835 MHz	$\epsilon_r = 55.2 \pm 5\%$	$\sigma = 0.97 \pm 5\% \text{ mho/m}$
	ConvF X	6.3 $\pm 9.5\%$ (k=2)	Boundary effect:
	ConvF Y	6.3 $\pm 9.5\%$ (k=2)	Alpha 0.42
	ConvF Z	6.3 $\pm 9.5\%$ (k=2)	Depth 2.44
Body	1800 MHz	$\epsilon_r = 53.3 \pm 5\%$	$\sigma = 1.52 \pm 5\% \text{ mho/m}$
Body	1900 MHz	$\epsilon_r = 53.3 \pm 5\%$	$\sigma = 1.52 \pm 5\% \text{ mho/m}$
	ConvF X	5.0 $\pm 9.5\%$ (k=2)	Boundary effect:
	ConvF Y	5.0 $\pm 9.5\%$ (k=2)	Alpha 0.76
	ConvF Z	5.0 $\pm 9.5\%$ (k=2)	Depth 2.01

ET3DV6 SN:1387

February 22, 2002

Deviation from Isotropy in HSL

Error (θ, ϕ), $f = 900$ MHz



Additional Conversion Factors for Dosimetric E-Field Probe

Type:

ET3DV6

Serial Number:

1387

Place of Assessment:

Zurich

Date of Assessment:


February 25, 2002

Probe Calibration Date:

February 22, 2002

Schmid & Partner Engineering AG hereby certifies that conversion factor(s) of this probe have been evaluated on the date indicated above. The assessment was performed using the FDTD numerical code SEMCAD of Schmid & Partner Engineering AG. Since the evaluation is coupled with measured conversion factors, it has to be recalculated yearly, i.e., following the re-calibration schedule of the probe. The uncertainty of the numerical assessment is based on the extrapolation from measured value at 900 MHz or at 1800 MHz.

Assessed by:



Dosimetric E-Field Probe ET3DV6 SN:1387

Conversion Factor (\pm standard deviation)

150 MHz	ConvF	$9.2 \pm 8\%$	$\epsilon_r = 52.3$ $\sigma = 0.76 \text{ mho/m}$ (head tissue)
300 MHz	ConvF	$8.0 \pm 8\%$	$\epsilon_r = 45.3$ $\sigma = 0.87 \text{ mho/m}$ (head tissue)
450 MHz	ConvF	$7.3 \pm 8\%$	$\epsilon_r = 43.5$ $\sigma = 0.87 \text{ mho/m}$ (head tissue)
2450 MHz	ConvF	$4.7 \pm 8\%$	$\epsilon_r = 39.2$ $\sigma = 1.80 \text{ mho/m}$ (head tissue)
150 MHz	ConvF	$8.8 \pm 8\%$	$\epsilon_r = 61.9$ $\sigma = 0.80 \text{ mho/m}$ (body tissue)
450 MHz	ConvF	$7.7 \pm 8\%$	$\epsilon_r = 56.7$ $\sigma = 0.94 \text{ mho/m}$ (body tissue)
2450 MHz	ConvF	$4.3 \pm 8\%$	$\epsilon_r = 52.7$ $\sigma = 1.95 \text{ mho/m}$ (body tissue)

APPENDIX E - MEASURED FLUID DIELECTRIC PARAMETERS

1800MHz System Performance Check

Measured Fluid Dielectric Parameters (Brain)

October 31, 2002

Frequency	e'	e''
1.700000000 GHz	41.2798	13.0837
1.710000000 GHz	41.2602	13.0951
1.720000000 GHz	41.2428	13.1239
1.730000000 GHz	41.2332	13.1635
1.740000000 GHz	41.1970	13.2033
1.750000000 GHz	41.1597	13.2594
1.760000000 GHz	41.1399	13.3108
1.770000000 GHz	41.0942	13.3531
1.780000000 GHz	41.0424	13.3931
1.790000000 GHz	41.0023	13.4196
1.800000000 GHz	40.9392	13.4514
1.810000000 GHz	40.8723	13.5044
1.820000000 GHz	40.8305	13.5262
1.830000000 GHz	40.7701	13.5601
1.840000000 GHz	40.7256	13.6024
1.850000000 GHz	40.6963	13.6136
1.860000000 GHz	40.6578	13.6371
1.870000000 GHz	40.6143	13.6698
1.880000000 GHz	40.5860	13.7051
1.890000000 GHz	40.5368	13.7388
1.900000000 GHz	40.4979	13.7539
1.910000000 GHz	40.4361	13.7782
1.920000000 GHz	40.3913	13.8216
1.930000000 GHz	40.3420	13.8382
1.940000000 GHz	40.2957	13.8799
1.950000000 GHz	40.2504	13.8943
1.960000000 GHz	40.2068	13.9137
1.970000000 GHz	40.1537	13.9220
1.980000000 GHz	40.1066	13.9680
1.990000000 GHz	40.0705	13.9890
2.000000000 GHz	40.0110	14.0174
2.010000000 GHz	39.9634	14.0526
2.020000000 GHz	39.9454	14.0734
2.030000000 GHz	39.9005	14.0836
2.040000000 GHz	39.8735	14.0757
2.050000000 GHz	39.8261	14.0793
2.060000000 GHz	39.7697	14.0897
2.070000000 GHz	39.7324	14.1132
2.080000000 GHz	39.6860	14.1142
2.090000000 GHz	39.6347	14.1394
2.100000000 GHz	39.6010	14.1757

1900MHz EUT Evaluation (Body)

Measured Fluid Dielectric Parameters (Muscle)

October 31, 2002

Frequency	e'	e''
1.780000000 GHz	53.7799	14.1634
1.790000000 GHz	53.7451	14.1811
1.800000000 GHz	53.6851	14.2061
1.810000000 GHz	53.6466	14.2278
1.820000000 GHz	53.5981	14.2401
1.830000000 GHz	53.5462	14.2632
1.840000000 GHz	53.5197	14.2792
1.850000000 GHz	53.4766	14.2954
1.860000000 GHz	53.4572	14.2945
1.870000000 GHz	53.4243	14.3098
1.880000000 GHz	53.3928	14.3204
1.890000000 GHz	53.3722	14.3288
1.900000000 GHz	53.3463	14.3497
1.910000000 GHz	53.3347	14.3760
1.920000000 GHz	53.3135	14.3820
1.930000000 GHz	53.3075	14.4182
1.940000000 GHz	53.3146	14.4349
1.950000000 GHz	53.3167	14.4599
1.960000000 GHz	53.2951	14.4929
1.970000000 GHz	53.2730	14.5118
1.980000000 GHz	53.2137	14.5745

APPENDIX F - SAM PHANTOM CERTIFICATE OF CONFORMITY

Schmid & Partner Engineering AG

Zeughausstrasse 43, 8004 Zurich, Switzerland, Phone +41 1 245 97 00, Fax +41 1 245 97 79

Certificate of conformity / First Article Inspection

Item	SAM Twin Phantom V4.0
Type No	QD 000 P40 BA
Series No	TP-1002 and higher
Manufacturer / Origin	Untersee Composites Hauptstr. 69 CH-8559 Fruthwilen Switzerland

Tests

The series production process used allows the limitation to test of first articles. Complete tests were made on the pre-series Type No. QD 000 P40 AA, Serial No. TP-1001 and on the series first article Type No. QD 000 P40 BA, Serial No. TP-1006. Certain parameters have been retested using further series units (called samples).

Test	Requirement	Details	Units tested
Shape	Compliance with the geometry according to the CAD model.	IT'IS CAD File (*)	First article, Samples
Material thickness	Compliant with the requirements according to the standards	2mm +/- 0.2mm in specific areas	First article, Samples
Material parameters	Dielectric parameters for required frequencies	200 MHz – 3 GHz Relative permittivity < 5 Loss tangent < 0.05.	Material sample TP 104-5
Material resistivity	The material has been tested to be compatible with the liquids defined in the standards	Liquid type HSL 1800 and others according to the standard.	Pre-series, First article

Standards

- [1] CENELEC EN 50361
- [2] IEEE P1528-200x draft 6.5
- [3] IEC PT 62209 draft 0.9

(*) The IT'IS CAD file is derived from [2] and is also within the tolerance requirements of the shapes of [1] and [3].

Conformity

Based on the sample tests above, we certify that this item is in compliance with the uncertainty requirements of SAR measurements specified in standard [1] and draft standards [2] and [3].

Date 18.11.2001

Signature / Stamp



**Schmid & Partner
Engineering AG**



Zeughausstrasse 43, CH-8004 Zurich
Tel. +41 1 245 97 00, Fax +41 1 245 97 79

APPENDIX G - SAR TEST SETUP PHOTOGRAPHS

BODY SAR TEST SETUP PHOTOGRAPHS

Back of LCD Display (Closed) - Antenna Parallel to Planar Phantom (Stowed Position)
0.0cm Separation Distance from Back of LCD to Planar Phantom



BODY SAR TEST SETUP PHOTOGRAPHS
Back of LCD Display (Closed) - Antenna Perpendicular to Planar Phantom (180°)
0.0cm Separation Distance from Back of LCD to Planar Phantom



BODY SAR TEST SETUP PHOTOGRAPHS

Bottom of Laptop PC (LCD Display Closed) - Antenna Parallel to Planar Phantom (Stowed Position)
0.0cm Separation Distance from Bottom of Laptop PC to Planar Phantom



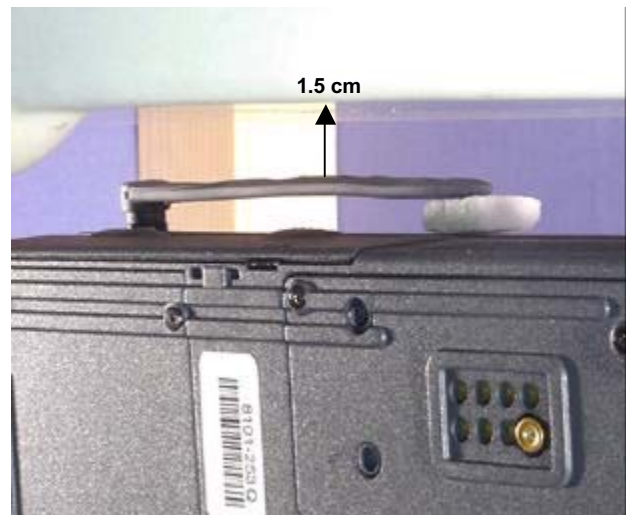
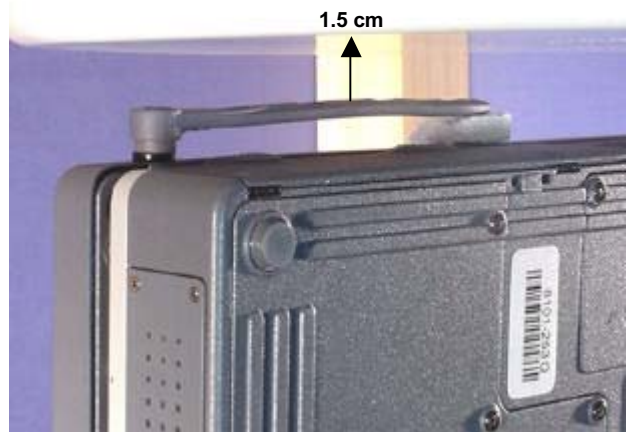
BODY SAR TEST SETUP PHOTOGRAPHS

Bottom of Laptop PC (LCD Display Closed) - Antenna Perpendicular to Planar Phantom (Extended Position)
0.0cm Separation Distance from Bottom of Laptop PC to Planar Phantom



BODY SAR TEST SETUP PHOTOGRAPHS

Right Side of LCD Display (Closed) - Antenna Parallel to Planar Phantom (Stowed Position)
1.5cm Separation Distance from Antenna to Planar Phantom



BODY SAR TEST SETUP PHOTOGRAPHS

Right Side of LCD Display (Closed) - Antenna Parallel to Planar Phantom (Extended Position)
1.5cm Separation Distance from Antenna to Planar Phantom

