

APPENDIX A - SAR MEASUREMENT DATA

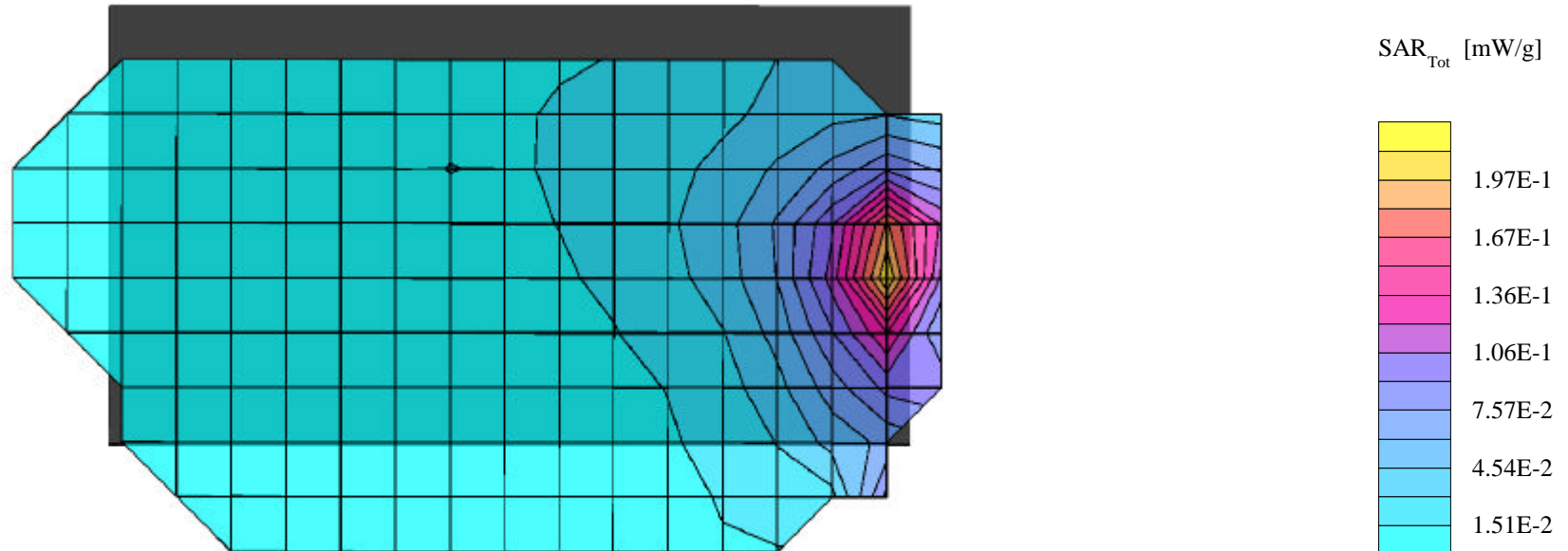
Itronix Corporation FCC ID: KBCIX260AC750-MPI

SAM Phantom; Flat Section; Position: (0°,0°)
Probe: ET3DV6 - SN1387; ConvF(4.60,4.60,4.60); Crest factor: 1.0
2450 MHz Muscle: $\sigma = 1.98$ mho/m $\epsilon_r = 48.1$ $\rho = 1.00$ g/cm³
Coarse: Dx = 15.0, Dy = 15.0, Dz = 10.0
Cube 5x5x7
SAR (1g): 0.197 mW/g, SAR (10g): 0.102 mW/g

Body SAR - Back of Laptop PC LCD Display (Closed) - Left-Side Antenna
1.5 cm Separation Distance from Back of LCD Display to Planar Phantom
Itronix IX260 Rugged Laptop PC with Cisco MPI-350 Mini-PCI WLAN Card
Co-located with Sierra Wireless AirCard 750 PCS GSM/GPRS Modem
CW Mode

Single Transmit - WLAN Card only

Mid Channel [2437 MHz]
Peak Conducted Power: 21.1 dBm
Ambient Temp: 23.8°C; Fluid Temp: 23.8°C
Date Tested: March 26, 2003



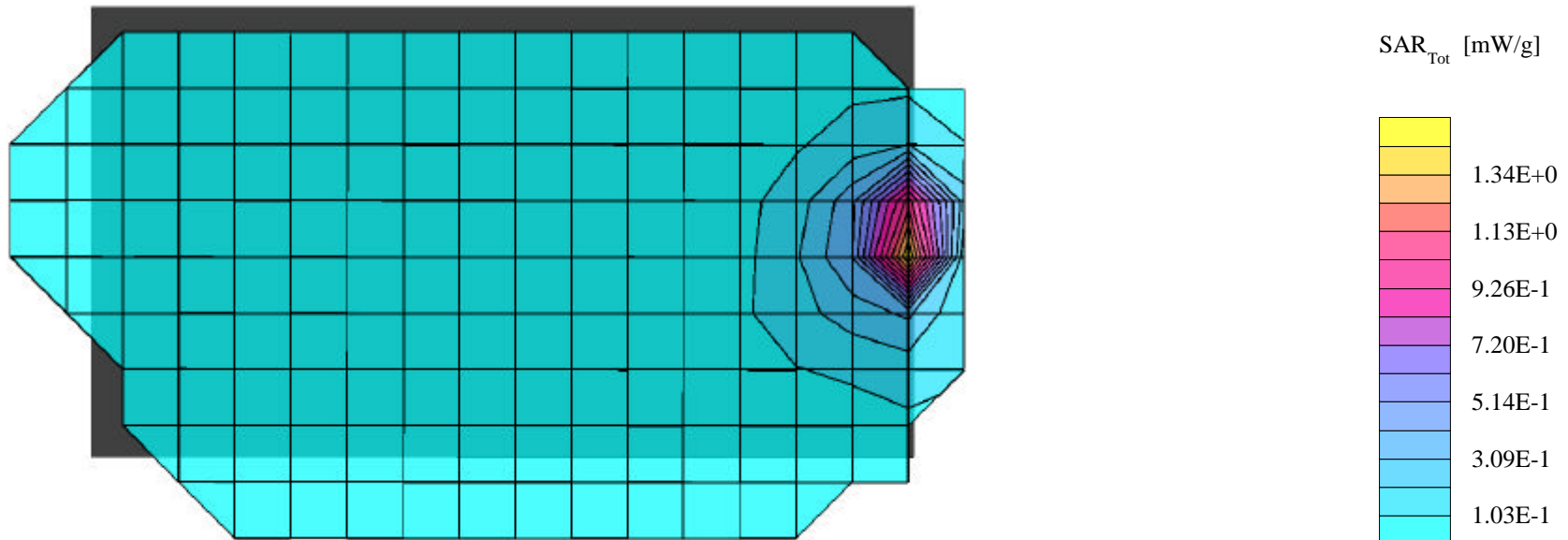
Itronix Corporation FCC ID: KBCIX260AC750-MPI

SAM Phantom; Flat Section; Position: (0°,0°)
 Probe: ET3DV6 - SN1387; ConvF(4.60,4.60,4.60); Crest factor: 1.0
 2450 MHz Muscle: $\sigma = 1.98$ mho/m $\epsilon_r = 48.1$ $\rho = 1.00$ g/cm³
 Coarse: Dx = 15.0, Dy = 15.0, Dz = 10.0
 Cube 5x5x7
 SAR (1g): 1.33 mW/g, SAR (10g): 0.547 mW/g

Body SAR - Back of Laptop PC LCD Display (Closed) - Left-Side Antenna
 1.5 cm Separation Distance from Back of LCD Display to Planar Phantom
 Itronix IX260 Rugged Laptop PC with Cisco MPI-350 Mini-PCI WLAN Card
 Co-located with Sierra Wireless AirCard 750 PCS GSM/GPRS Modem
 CW Mode

Simultaneous Transmit - WLAN Card & PCS GPRS Modem

Mid Channel [2437 MHz]
 Peak Conducted Power: 21.1 dBm
 Ambient Temp: 23.8°C; Fluid Temp: 23.8°C
 Date Tested: March 26, 2003



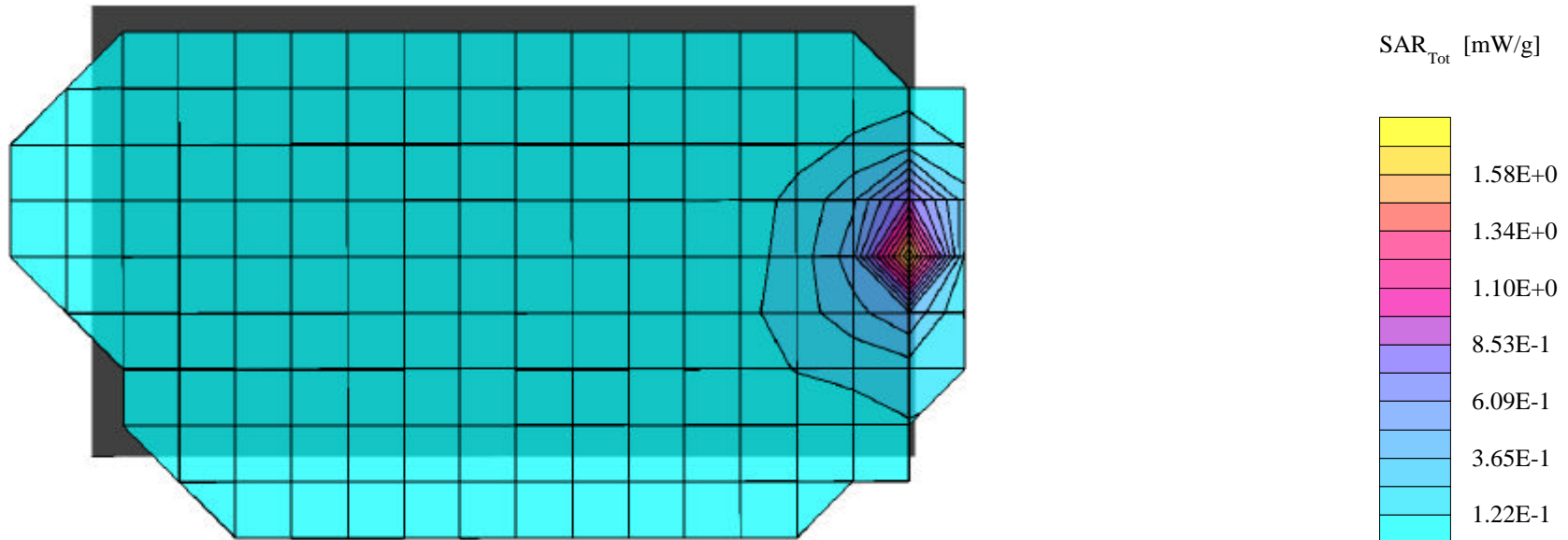
Itronix Corporation FCC ID: KBCIX260AC750-MPI

SAM Phantom; Flat Section; Position: (0°,0°)
 Probe: ET3DV6 - SN1387; ConvF(4.60,4.60,4.60); Crest factor: 1.0
 2450 MHz Muscle: $\sigma = 1.98$ mho/m $\epsilon_r = 48.1$ $\rho = 1.00$ g/cm³
 Coarse: Dx = 15.0, Dy = 15.0, Dz = 10.0
 Cube 5x5x7
 SAR (1g): 1.49 mW/g, SAR (10g): 0.597 mW/g

Body SAR - Back of Laptop PC LCD Display (Closed) - Left-Side Antenna
 1.5 cm Separation Distance from Back of LCD Display to Planar Phantom
 Itronix IX260 Rugged Laptop PC with Cisco MPI-350 Mini-PCI WLAN Card
 Co-located with Sierra Wireless AirCard 750 PCS GSM/GPRS Modem
 CW Mode

Simultaneous Transmit - WLAN Card & PCS GPRS Modem

Low Channel [2412 MHz]
 Peak Conducted Power: 21.2 dBm
 Ambient Temp: 23.8°C; Fluid Temp: 23.8°C
 Date Tested: March 26, 2003



Itronix Corporation FCC ID: KBCIX260AC750-MPI

SAM Phantom; Flat Section

Probe: ET3DV6 - SN1387; ConvF(4.60,4.60,4.60); Crest factor: 1.0

2450 MHz Muscle: $\sigma = 1.98$ mho/m $\epsilon_r = 48.1$ $\rho = 1.00$ g/cm³

Z-Axis Extrapolation at Peak SAR Location

Body SAR - Back of Laptop PC LCD Display (Closed) - Left-Side Antenna

1.5 cm Separation Distance from Back of LCD Display to Planar Phantom

Itronix IX260 Rugged Laptop PC with Cisco MPI-350 Mini-PCI WLAN Card

Co-located with Sierra Wireless AirCard 750 PCS GSM/GPRS Modem

CW Mode

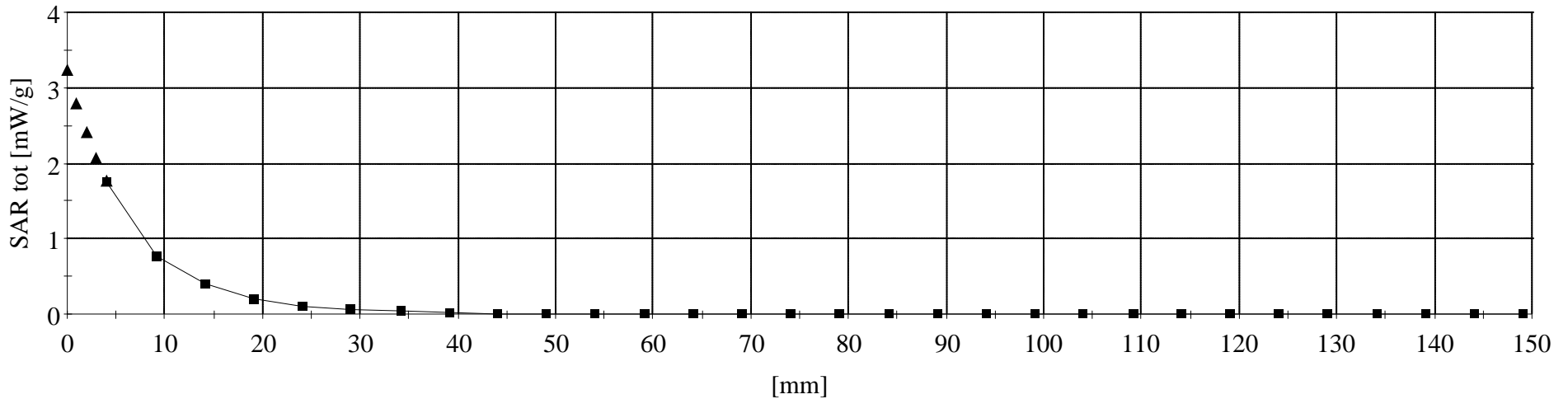
Simultaneous Transmit - WLAN Card & PCS GPRS Modem

Low Channel [2412 MHz]

Peak Conducted Power: 21.2 dBm

Ambient Temp: 23.8°C; Fluid Temp: 23.8°C

Date Tested: March 26, 2003



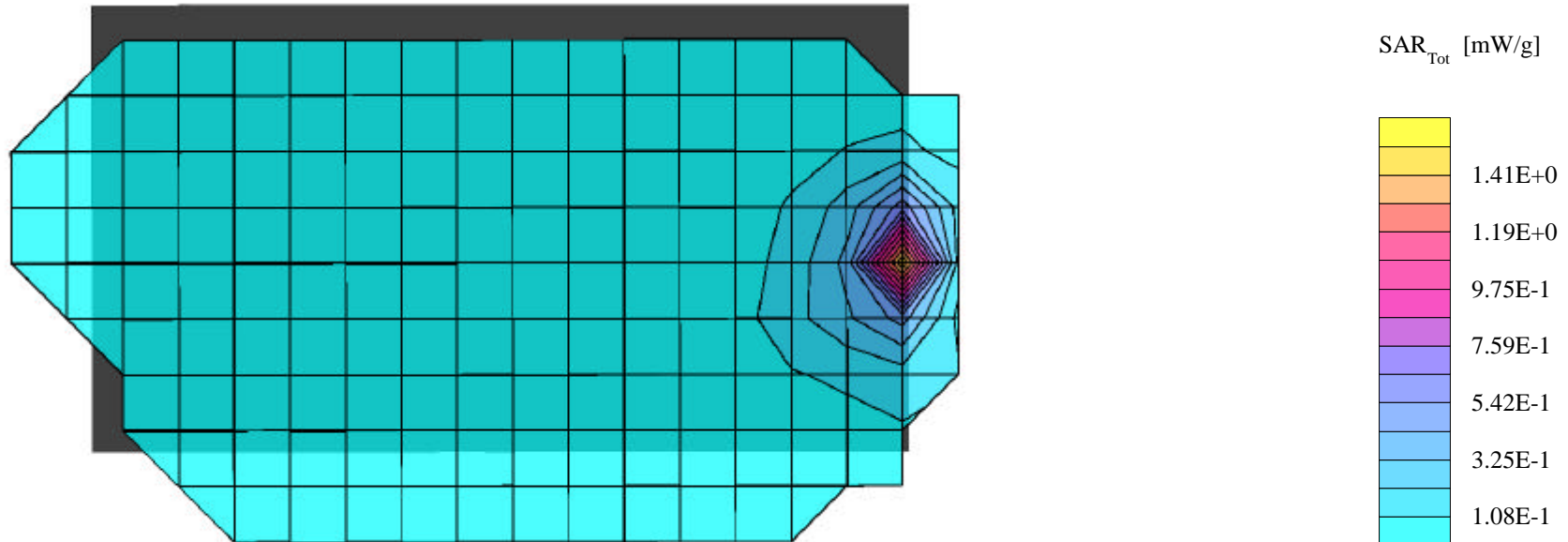
Itronix Corporation FCC ID: KBCIX260AC750-MPI

SAM Phantom; Flat Section; Position: (0°,0°)
 Probe: ET3DV6 - SN1387; ConvF(4.60,4.60,4.60); Crest factor: 1.0
 2450 MHz Muscle: $\sigma = 1.98$ mho/m $\epsilon_r = 48.1$ $\rho = 1.00$ g/cm³
 Coarse: Dx = 15.0, Dy = 15.0, Dz = 10.0
 Cube 5x5x7
 SAR (1g): 1.22 mW/g, SAR (10g): 0.494 mW/g

Body SAR - Back of Laptop PC LCD Display (Closed) - Left-Side Antenna
 1.5 cm Separation Distance from Back of LCD Display to Planar Phantom
 Itronix IX260 Rugged Laptop PC with Cisco MPI-350 Mini-PCI WLAN Card
 Co-located with Sierra Wireless AirCard 750 PCS GSM/GPRS Modem
 CW Mode

Simultaneous Transmit - WLAN Card & PCS GPRS Modem

High Channel [2462 MHz]
 Peak Conducted Power: 21.1 dBm
 Ambient Temp: 23.8°C; Fluid Temp: 23.8°C
 Date Tested: March 26, 2003



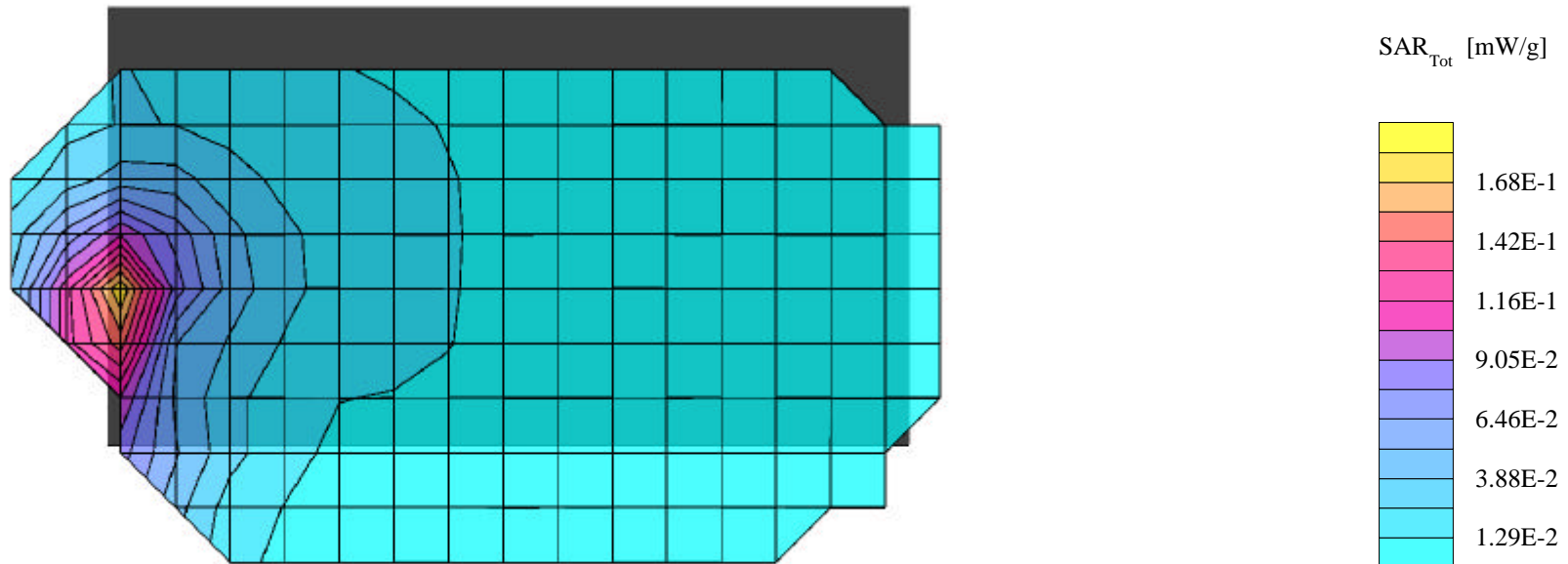
Itronix Corporation FCC ID: KBCIX260AC750-MPI

SAM Phantom; Flat Section; Position: (0°,0°)
Probe: ET3DV6 - SN1387; ConvF(4.60,4.60,4.60); Crest factor: 1.0
2450 MHz Muscle: $\sigma = 1.98$ mho/m $\epsilon_r = 48.1$ $\rho = 1.00$ g/cm³
Coarse: Dx = 15.0, Dy = 15.0, Dz = 10.0
Cube 5x5x7
SAR (1g): 0.171 mW/g, SAR (10g): 0.0873 mW/g

Body SAR - Back of Laptop PC LCD Display (Closed) - Right-Side Antenna
1.5 cm Separation Distance from Back of LCD Display to Planar Phantom
Itronix IX260 Rugged Laptop PC with Cisco MPI-350 Mini-PCI WLAN Card
Co-located with Sierra Wireless AirCard 750 PCS GSM/GPRS Modem
CW Mode

Single Transmit - WLAN Card only

Mid Channel [2437 MHz]
Peak Conducted Power: 21.1 dBm
Ambient Temp: 23.8°C; Fluid Temp: 23.8°C
Date Tested: March 26, 2003



Itronix Corporation FCC ID: KBCIX260AC750-MPI

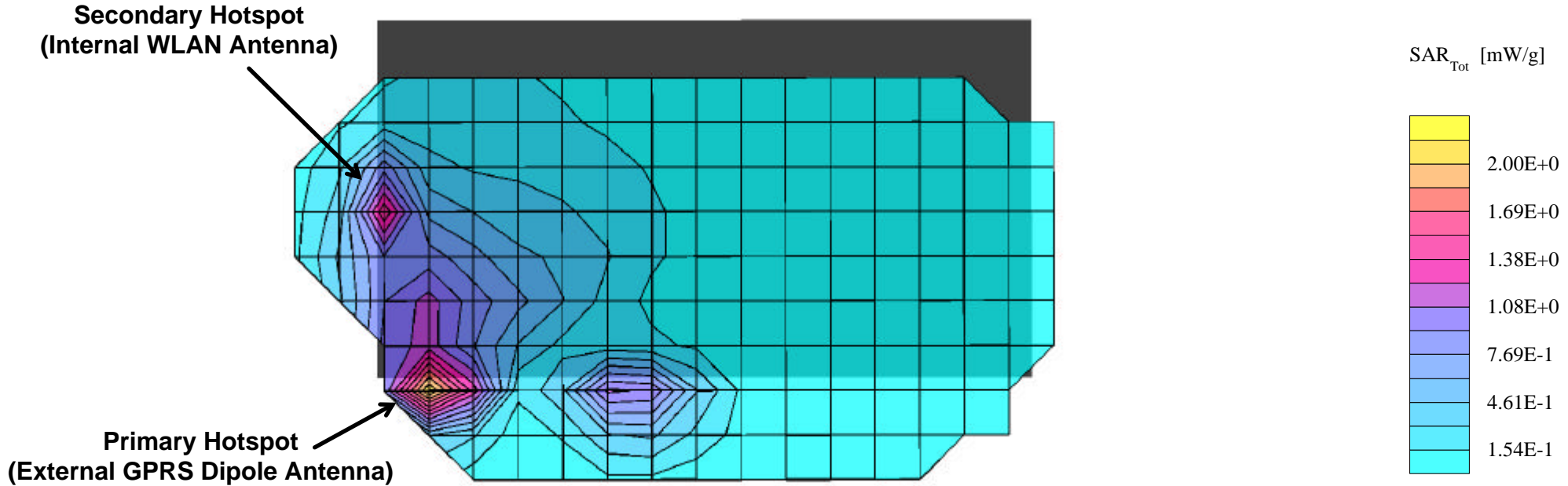
SAM Phantom; Flat Section; Position: (0°,0°)
 Probe: ET3DV6 - SN1387; ConvF(4.60,4.60,4.60); Crest factor: 1.0
 2450 MHz Muscle: $\sigma = 1.98$ mho/m $\epsilon_r = 48.1$ $\rho = 1.00$ g/cm³
 Coarse: Dx = 15.0, Dy = 15.0, Dz = 10.0
 Cube 5x5x7
 SAR (1g): 1.27 mW/g, SAR (10g): 0.528 mW/g

Body SAR - Back of Laptop PC LCD Display (Closed) - Right-Side Antenna
 1.5 cm Separation Distance from Back of LCD Display to Planar Phantom
 Itronix IX260 Rugged Laptop PC with Cisco MPI-350 Mini-PCI WLAN Card
 Co-located with Sierra Wireless AirCard 750 PCS GSM/GPRS Modem
 CW Mode

Simultaneous Transmit - WLAN Card & PCS GPRS Modem

Mid Channel [2437 MHz]
 Peak Conducted Power: 21.1 dBm
 Ambient Temp: 23.8°C; Fluid Temp: 23.8°C
 Date Tested: March 26, 2003

Secondary Hotspot Evaluation (Right Side Internal WLAN Antenna)



Itronix Corporation FCC ID: KBCIX260AC750-MPI

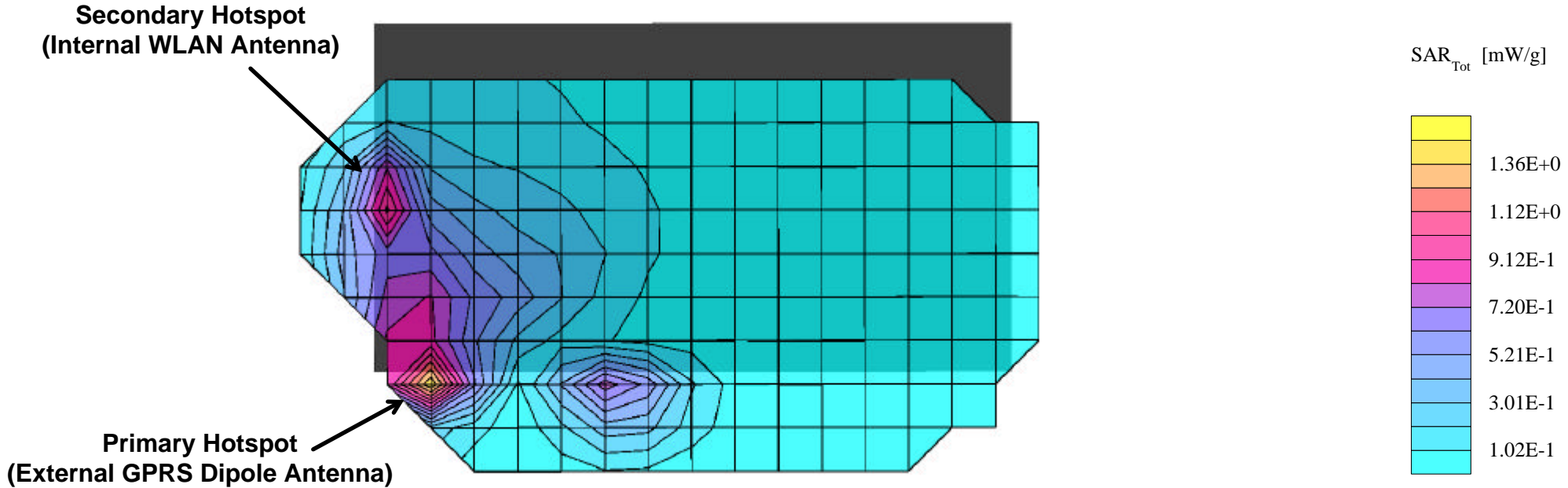
SAM Phantom; Flat Section; Position: (0°,0°)
 Probe: ET3DV6 - SN1387; ConvF(4.60,4.60,4.60); Crest factor: 1.0
 2450 MHz Muscle: $\sigma = 1.98$ mho/m $\epsilon_r = 48.1$ $\rho = 1.00$ g/cm³
 Coarse: Dx = 15.0, Dy = 15.0, Dz = 10.0
 Cube 5x5x7
 SAR (1g): 1.05 mW/g, SAR (10g): 0.432 mW/g

Body SAR - Back of Laptop PC LCD Display (Closed) - Right-Side Antenna
 1.5 cm Separation Distance from Back of LCD Display to Planar Phantom
 Itronix IX260 Rugged Laptop PC with Cisco MPI-350 Mini-PCI WLAN Card
 Co-located with Sierra Wireless AirCard 750 PCS GSM/GPRS Modem
 CW Mode

Simultaneous Transmit - WLAN Card & PCS GPRS Modem

Low Channel [2412 MHz]
 Peak Conducted Power: 21.2 dBm
 Ambient Temp: 23.8°C; Fluid Temp: 23.8°C
 Date Tested: March 26, 2003

Secondary Hotspot Evaluation (Right Side Internal WLAN Antenna)



Itronix Corporation FCC ID: KBCIX260AC750-MPI

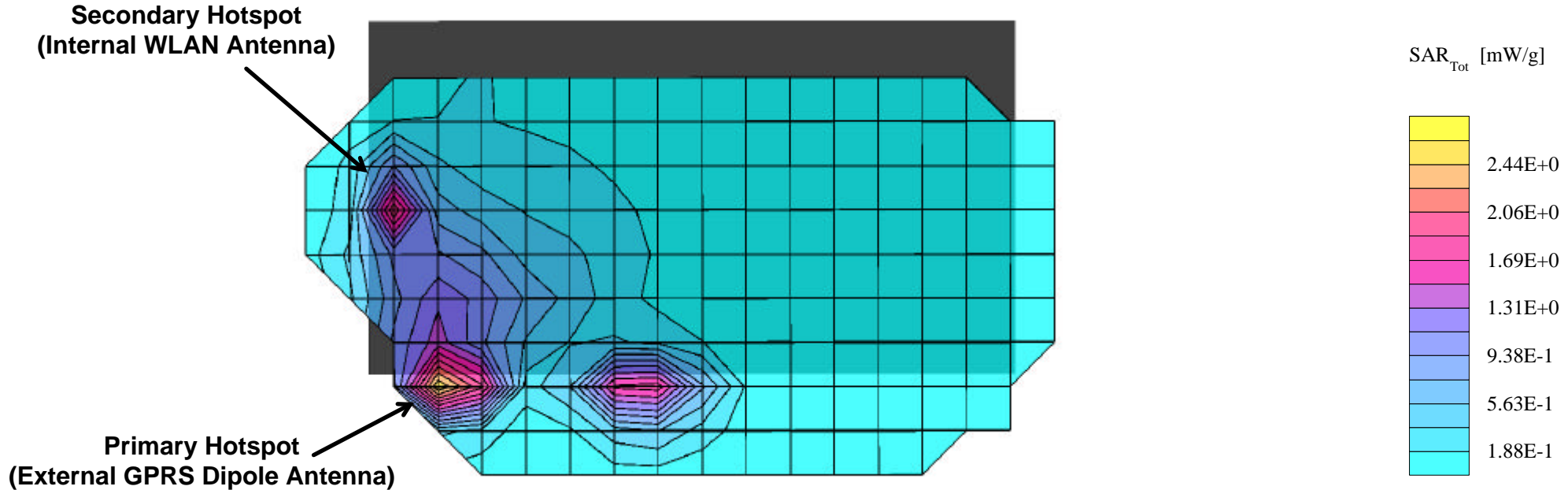
SAM Phantom; Flat Section; Position: (0°,0°)
 Probe: ET3DV6 - SN1387; ConvF(4.60,4.60,4.60); Crest factor: 1.0
 2450 MHz Muscle: $\sigma = 1.98$ mho/m $\epsilon_r = 48.1$ $\rho = 1.00$ g/cm³
 Coarse: Dx = 15.0, Dy = 15.0, Dz = 10.0
 Cube 5x5x7
 SAR (1g): 1.23 mW/g, SAR (10g): 0.476 mW/g

Body SAR - Back of Laptop PC LCD Display (Closed) - Right-Side Antenna
 1.5 cm Separation Distance from Back of LCD Display to Planar Phantom
 Itronix IX260 Rugged Laptop PC with Cisco MPI-350 Mini-PCI WLAN Card
 Co-located with Sierra Wireless AirCard 750 PCS GSM/GPRS Modem
 CW Mode

Simultaneous Transmit - WLAN Card & PCS GPRS Modem

High Channel [2462 MHz]
 Peak Conducted Power: 21.1 dBm
 Ambient Temp: 23.8°C; Fluid Temp: 23.8°C
 Date Tested: March 26, 2003

Secondary Hotspot Evaluation (Right Side Internal WLAN Antenna)



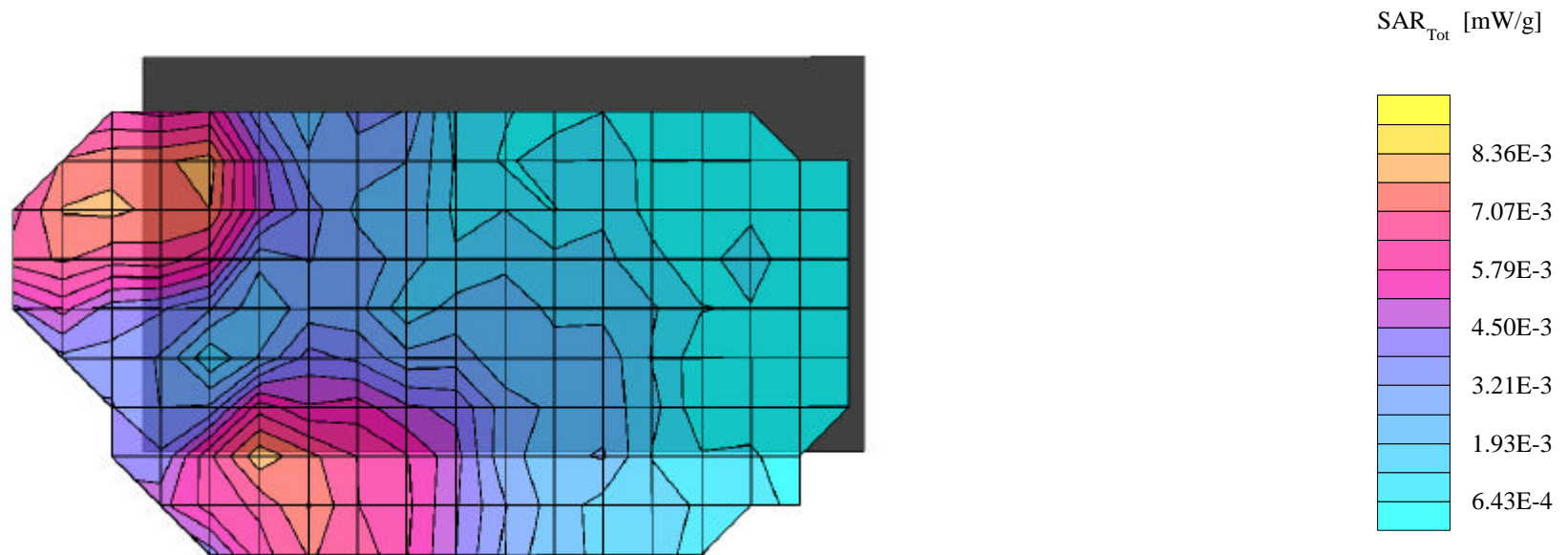
Itronix Corporation FCC ID: KBCIX260AC750-MPI

SAM Phantom; Flat Section; Position: (0°,0°)
Probe: ET3DV6 - SN1387; ConvF(4.60,4.60,4.60); Crest factor: 1.0
2450 MHz Muscle: $\sigma = 1.98$ mho/m $\epsilon_r = 48.1$ $\rho = 1.00$ g/cm³
Coarse: Dx = 15.0, Dy = 15.0, Dz = 10.0
Cube 5x5x7
SAR (1g): 0.0084 mW/g, SAR (10g): 0.0052 mW/g

Body SAR - Bottom of Laptop PC (LCD Display Closed) - Left-Side Antenna
0.0 cm Separation Distance from Bottom of Laptop PC to Planar Phantom
Itronix IX260 Rugged Laptop PC with Cisco MPI-350 Mini-PCI WLAN Card
Co-located with Sierra Wireless AirCard 750 PCS GSM/GPRS Modem
CW Mode

Single Transmit - WLAN Card only

Mid Channel [2437 MHz]
Peak Conducted Power: 21.1 dBm
Ambient Temp: 23.8°C; Fluid Temp: 23.8°C
Date Tested: March 26, 2003



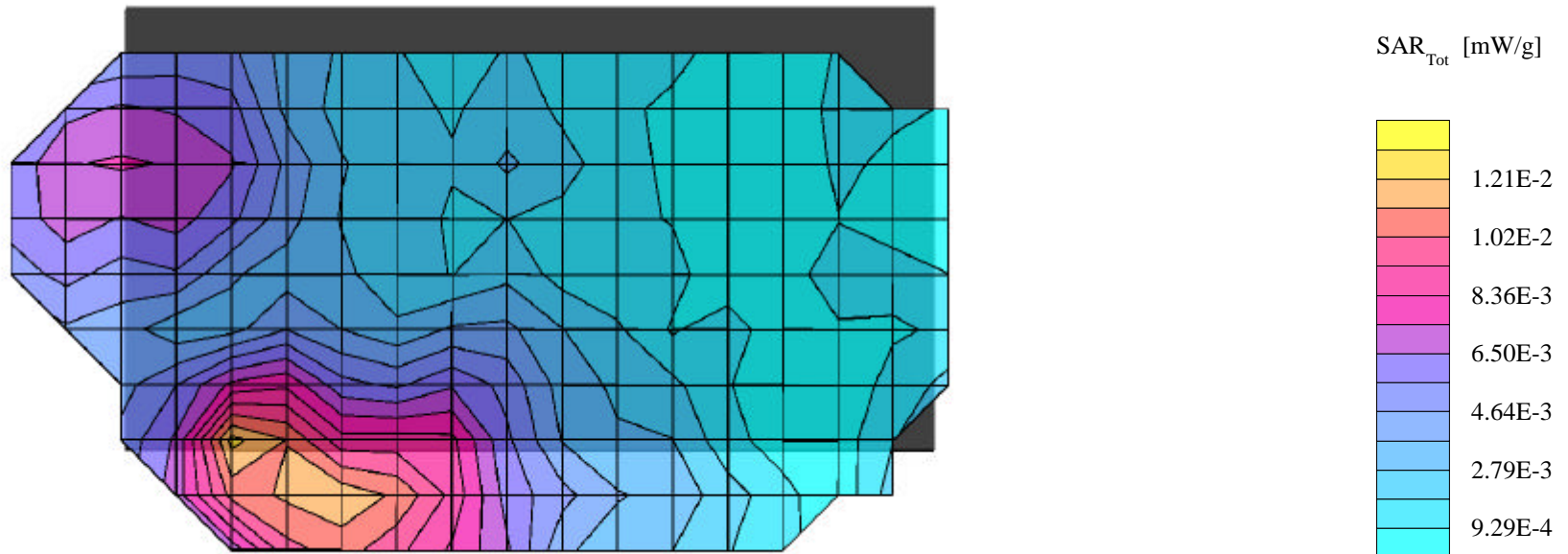
Itronix Corporation FCC ID: KBCIX260AC750-MPI

SAM Phantom; Flat Section; Position: (0°,0°)
Probe: ET3DV6 - SN1387; ConvF(4.60,4.60,4.60); Crest factor: 1.0
2450 MHz Muscle: $\sigma = 1.98$ mho/m $\epsilon_r = 48.1$ $\rho = 1.00$ g/cm³
Coarse: Dx = 15.0, Dy = 15.0, Dz = 10.0
Cube 5x5x7
SAR (1g): 0.0127 mW/g, SAR (10g): 0.0076 mW/g

Body SAR - Bottom of Laptop PC (LCD Display Closed) - Left-Side Antenna
0.0 cm Separation Distance from Bottom of Laptop PC to Planar Phantom
Itronix IX260 Rugged Laptop PC with Cisco MPI-350 Mini-PCI WLAN Card
Co-located with Sierra Wireless AirCard 750 PCS GSM/GPRS Modem
CW Mode

Simultaneous Transmit - WLAN Card & PCS GPRS Modem

Mid Channel [2437 MHz]
Peak Conducted Power: 21.1 dBm
Ambient Temp: 23.8°C; Fluid Temp: 23.8°C
Date Tested: March 26, 2003



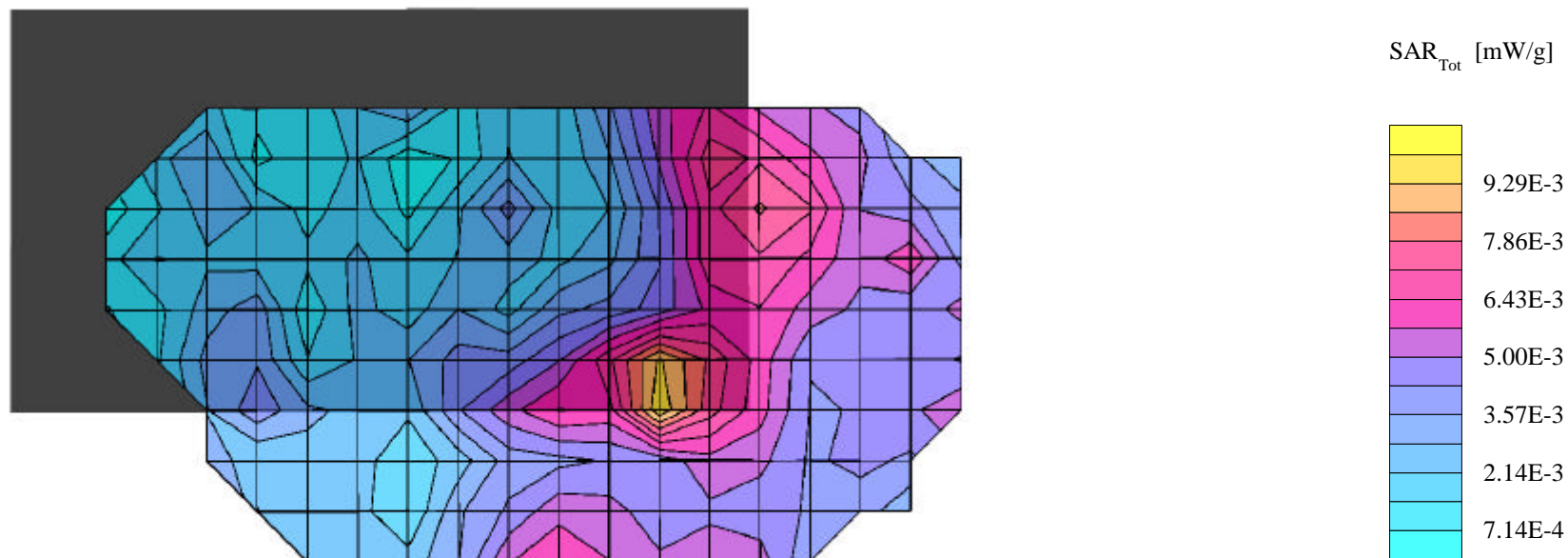
Itronix Corporation FCC ID: KBCIX260AC750-MPI

SAM Phantom; Flat Section; Position: (0°,0°)
Probe: ET3DV6 - SN1387; ConvF(4.60,4.60,4.60); Crest factor: 1.0
2450 MHz Muscle: $\sigma = 1.98$ mho/m $\epsilon_r = 48.1$ $\rho = 1.00$ g/cm³
Coarse: Dx = 15.0, Dy = 15.0, Dz = 10.0
Cube 5x5x7
SAR (1g): 0.0095 mW/g, SAR (10g): 0.0054 mW/g

Body SAR - Bottom of Laptop PC (LCD Display Closed) - Right-Side Antenna
0.0 cm Separation Distance from Bottom of Laptop PC to Planar Phantom
Itronix IX260 Rugged Laptop PC with Cisco MPI-350 Mini-PCI WLAN Card
Co-located with Sierra Wireless AirCard 750 PCS GSM/GPRS Modem
CW Mode

Single Transmit - WLAN Card only

Mid Channel [2437 MHz]
Peak Conducted Power: 21.1 dBm
Ambient Temp: 23.8°C; Fluid Temp: 23.8°C
Date Tested: March 26, 2003



Itronix Corporation FCC ID: KBCIX260AC750-MPI

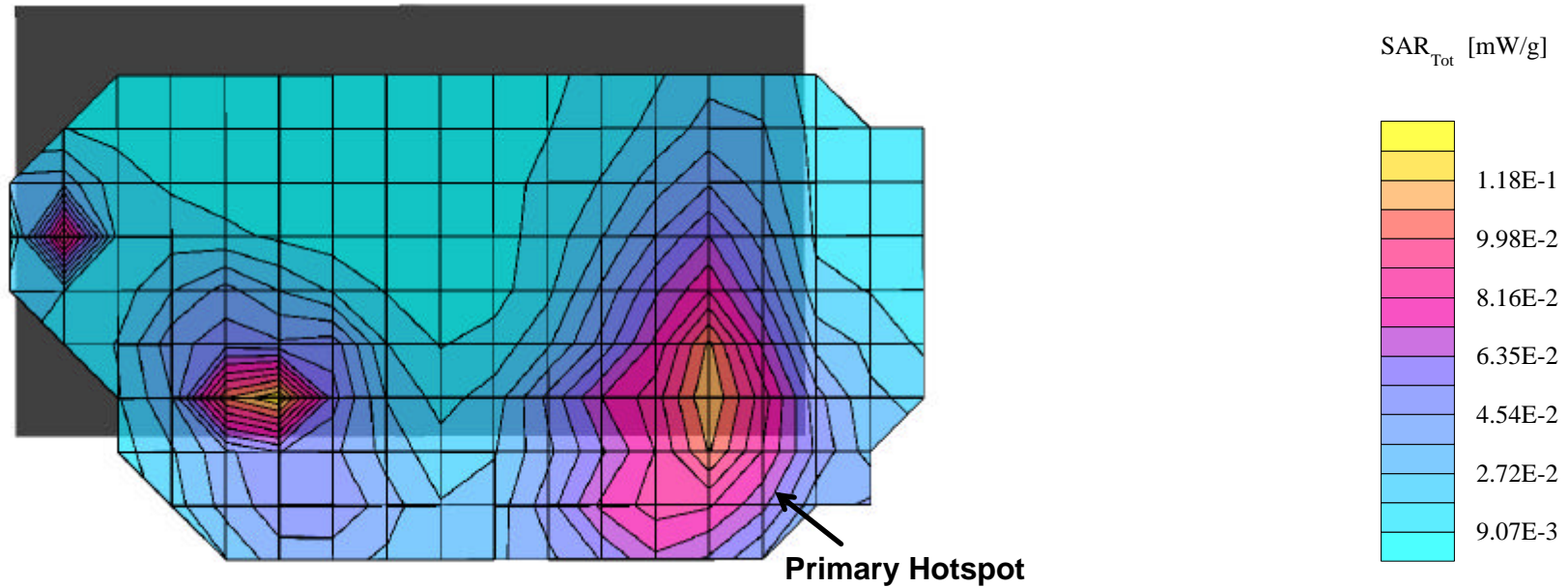
SAM Phantom; Flat Section; Position: (0°,0°)
 Probe: ET3DV6 - SN1387; ConvF(4.60,4.60,4.60); Crest factor: 1.0
 2450 MHz Muscle: $\sigma = 1.98$ mho/m $\epsilon_r = 48.1$ $\rho = 1.00$ g/cm³
 Coarse: Dx = 15.0, Dy = 15.0, Dz = 10.0
 Cube 5x5x7
 SAR (1g): 0.131 mW/g, SAR (10g): 0.0692 mW/g

Body SAR - Bottom of Laptop PC (LCD Display Closed) - Right-Side Antenna
 0.0 cm Separation Distance from Bottom of Laptop PC to Planar Phantom
 Itronix IX260 Rugged Laptop PC with Cisco MPI-350 Mini-PCI WLAN Card
 Co-located with Sierra Wireless AirCard 750 PCS GSM/GPRS Modem
 CW Mode

Simultaneous Transmit - WLAN Card & PCS GPRS Modem

Mid Channel [2437 MHz]
 Peak Conducted Power: 21.1 dBm
 Ambient Temp: 23.8°C; Fluid Temp: 23.8°C
 Date Tested: March 26, 2003

Primary Hotspot Evaluation



Itronix Corporation FCC ID: KBCIX260AC750-MPI

SAM Phantom; Flat Section; Position: (0°,0°)
 Probe: ET3DV6 - SN1387; ConvF(4.60,4.60,4.60); Crest factor: 1.0
 2450 MHz Muscle: $\sigma = 1.98$ mho/m $\epsilon_r = 48.1$ $\rho = 1.00$ g/cm³
 Coarse: Dx = 15.0, Dy = 15.0, Dz = 10.0
 Cube 5x5x7
 SAR (1g): 0.114 mW/g, SAR (10g): 0.0709 mW/g

Body SAR - Bottom of Laptop PC (LCD Display Closed) - Right-Side Antenna
 0.0 cm Separation Distance from Bottom of Laptop PC to Planar Phantom
 Itronix IX260 Rugged Laptop PC with Cisco MPI-350 Mini-PCI WLAN Card
 Co-located with Sierra Wireless AirCard 750 PCS GSM/GPRS Modem
 CW Mode

Simultaneous Transmit - WLAN Card & PCS GPRS Modem

Mid Channel [2437 MHz]
 Peak Conducted Power: 21.1 dBm
 Ambient Temp: 23.8°C; Fluid Temp: 23.8°C
 Date Tested: March 26, 2003

Secondary Hotspot Evaluation

