

APPENDIX A - SAR MEASUREMENT DATA

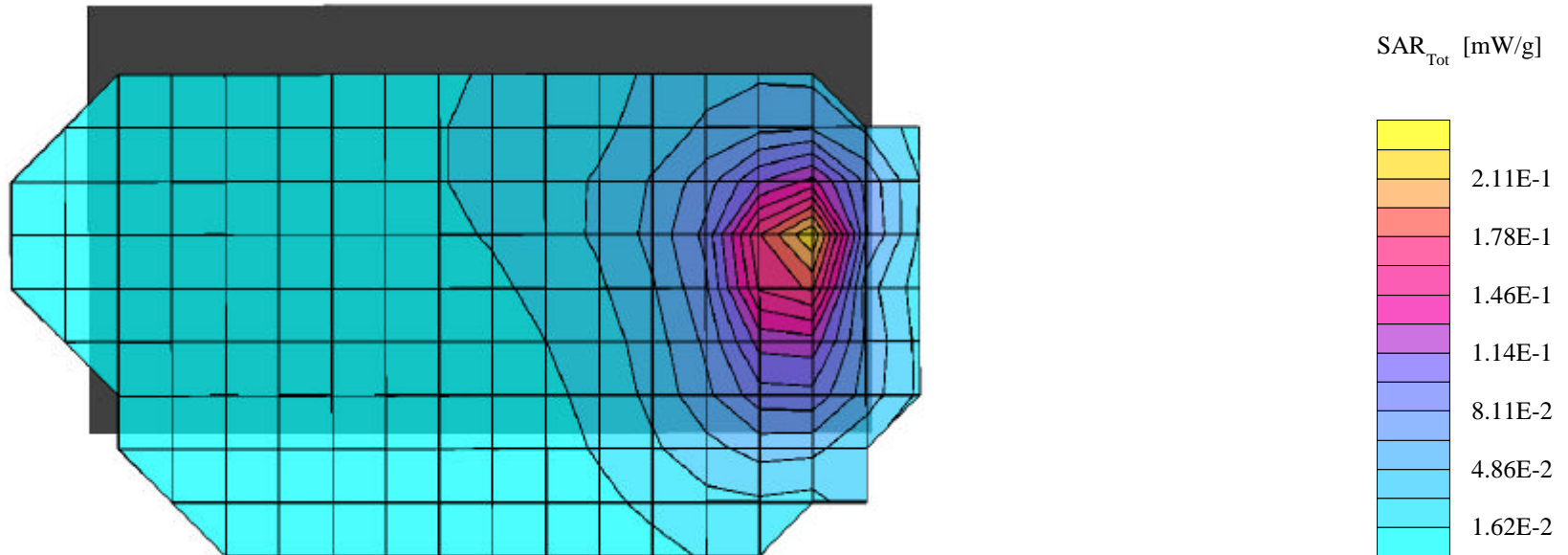
Itronix Corporation FCC ID: KBCIX260AC555-MPI

SAM Phantom; Flat Section; Position: (0°,0°)
Probe: ET3DV6 - SN1387; ConvF(4.30,4.30,4.30); Crest factor: 1.0
2450 MHz Muscle: $\sigma = 2.01$ mho/m $\epsilon_r = 47.7$ $\rho = 1.00$ g/cm³
Coarse: Dx = 15.0, Dy = 15.0, Dz = 10.0
Cube 5x5x7
SAR (1g): 0.210 mW/g, SAR (10g): 0.110 mW/g

Body SAR - Back of Laptop PC LCD Display (Closed) - Left-Side Antenna
1.5 cm Separation Distance from Back of LCD Display to Planar Phantom
Itronix IX260 Rugged Laptop PC with Cisco MPI-350 Mini-PCI WLAN Card
Co-located with Sierra Wireless AirCard 555 PCS/Cellular CDMA Modem
CW Mode

Single Transmit - WLAN Card only

Mid Channel [2437 MHz]
Peak Conducted Power: 21.1 dBm
Ambient Temp: 23.3°C; Fluid Temp: 22.8°C
Date Tested: December 10, 2002



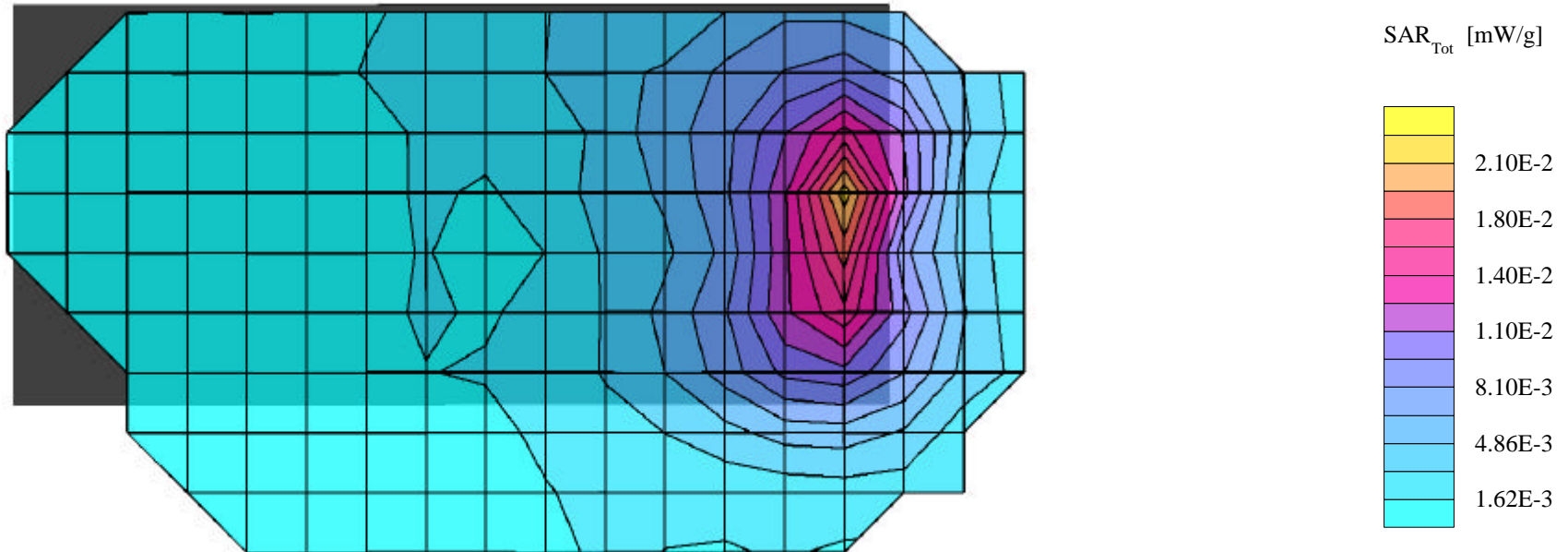
Itronix Corporation FCC ID: KBCIX260AC555-MPI

SAM Phantom; Flat Section; Position: (0°,0°)
Probe: ET3DV6 - SN1387; ConvF(4.30,4.30,4.30); Crest factor: 1.0
2450 MHz Muscle: $\sigma = 2.01$ mho/m $\epsilon_r = 47.7$ $\rho = 1.00$ g/cm³
Coarse: Dx = 15.0, Dy = 15.0, Dz = 10.0
Cube 5x5x7
SAR (1g): 0.177 mW/g, SAR (10g): 0.0965 mW/g

Body SAR - Back of Laptop PC LCD Display (Closed) - Left-Side Antenna
1.5 cm Separation Distance from Back of LCD Display to Planar Phantom
Itronix IX260 Rugged Laptop PC with Cisco MPI-350 Mini-PCI WLAN Card
Co-located with Sierra Wireless AirCard 555 PCS/Cellular CDMA Modem
CW Mode

Simultaneous Transmit - WLAN Card & PCS CDMA Modem

Mid Channel [2437 MHz]
Peak Conducted Power: 21.1 dBm
Ambient Temp: 23.3°C; Fluid Temp: 22.8°C
Date Tested: December 10, 2002



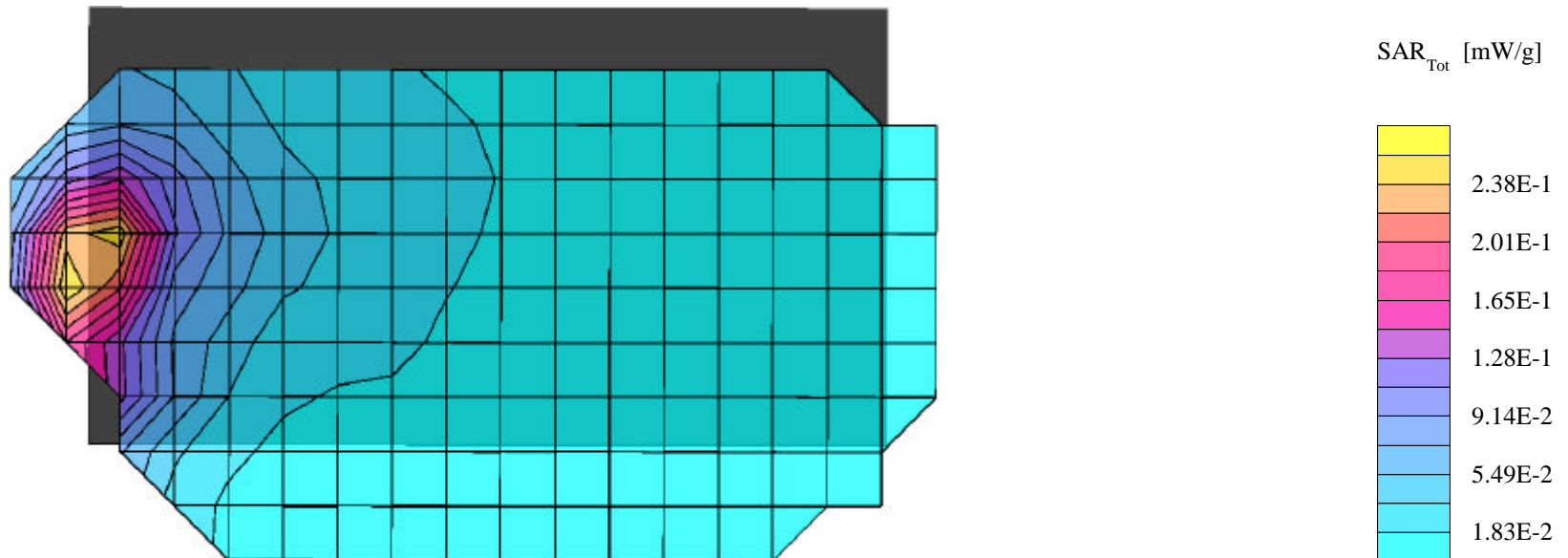
Itronix Corporation FCC ID: KBCIX260AC555-MPI

SAM Phantom; Flat Section; Position: (0°,0°)
Probe: ET3DV6 - SN1387; ConvF(4.30,4.30,4.30); Crest factor: 1.0
2450 MHz Muscle: $\sigma = 2.01$ mho/m $\epsilon_r = 47.7$ $\rho = 1.00$ g/cm³
Coarse: Dx = 15.0, Dy = 15.0, Dz = 10.0
Cube 5x5x7
SAR (1g): 0.256 mW/g, SAR (10g): 0.130 mW/g

Body SAR - Back of Laptop PC LCD Display (Closed) - Right-Side Antenna
1.5 cm Separation Distance from Back of LCD Display to Planar Phantom
Itronix IX260 Rugged Laptop PC with Cisco MPI-350 Mini-PCI WLAN Card
Co-located with Sierra Wireless AirCard 555 PCS/Cellular CDMA Modem
CW Mode

Single Transmit - WLAN Card only

Mid Channel [2437 MHz]
Peak Conducted Power: 21.1 dBm
Ambient Temp: 23.3°C; Fluid Temp: 22.8°C
Date Tested: December 10, 2002



Itronix Corporation FCC ID: KBCIX260AC555-MPI

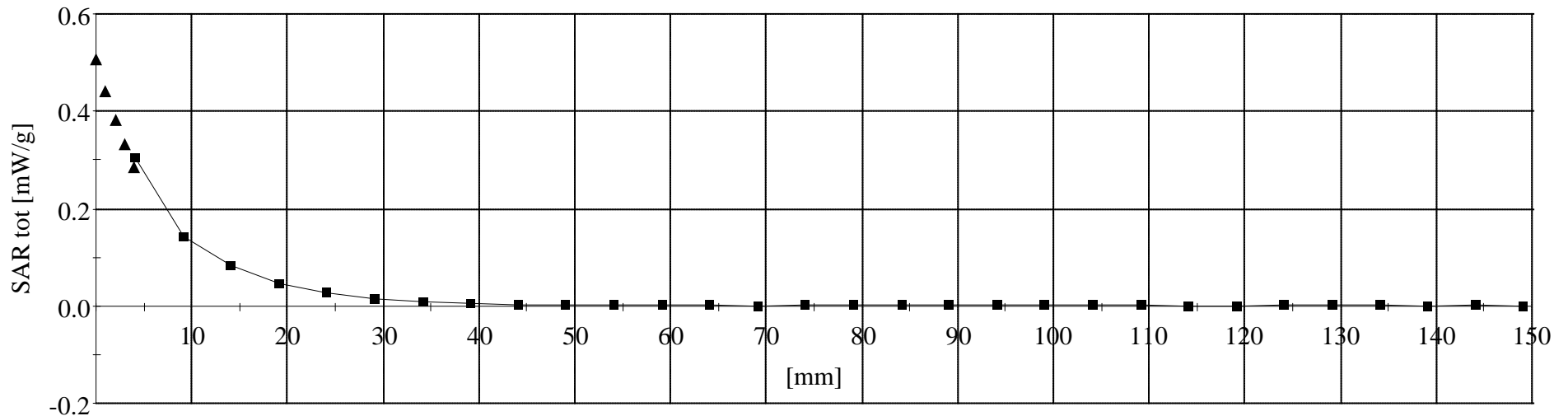
SAM Phantom; Flat Section
Probe: ET3DV6 - SN1387; ConvF(4.30,4.30,4.30); Crest factor: 1.0
2450 MHz Muscle: $\sigma = 2.01$ mho/m $\epsilon_r = 47.7$ $\rho = 1.00$ g/cm³

Z-Axis Extrapolation at Peak SAR Location

Body SAR - Back of Laptop PC LCD Display (Closed) - Right-Side Antenna
1.5 cm Separation Distance from Back of LCD Display to Planar Phantom
Itronix IX260 Rugged Laptop PC with Cisco MPI-350 Mini-PCI WLAN Card
Co-located with Sierra Wireless AirCard 555 PCS/Cellular CDMA Modem
CW Mode

Single Transmit - WLAN Card only

Mid Channel [2437 MHz]
Peak Conducted Power: 21.1 dBm
Ambient Temp: 23.3°C; Fluid Temp: 22.8°C
Date Tested: December 10, 2002



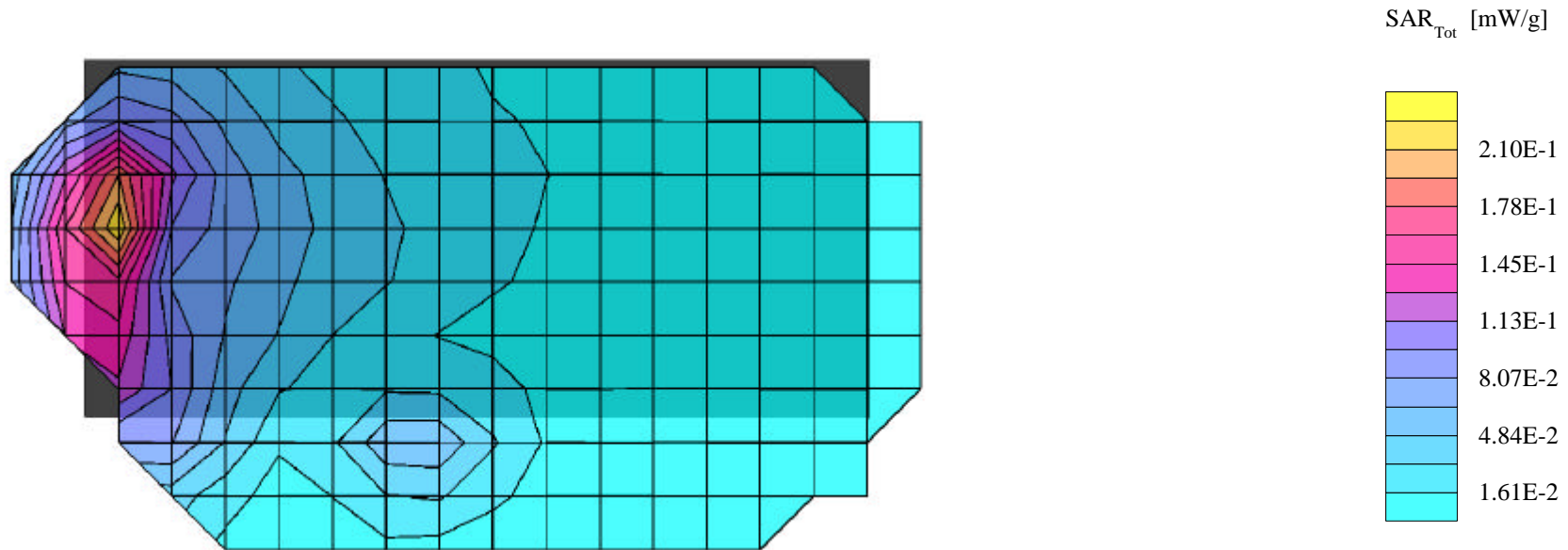
Itronix Corporation FCC ID: KBCIX260AC555-MPI

SAM Phantom; Flat Section; Position: (0°,0°)
Probe: ET3DV6 - SN1387; ConvF(4.30,4.30,4.30); Crest factor: 1.0
2450 MHz Muscle: $\sigma = 2.01$ mho/m $\epsilon_r = 47.7$ $\rho = 1.00$ g/cm³
Coarse: Dx = 15.0, Dy = 15.0, Dz = 10.0
Cube 5x5x7
SAR (1g): 0.223 mW/g, SAR (10g): 0.117 mW/g

Body SAR - Back of Laptop PC LCD Display (Closed) - Right-Side Antenna
1.5 cm Separation Distance from Back of LCD Display to Planar Phantom
Itronix IX260 Rugged Laptop PC with Cisco MPI-350 Mini-PCI WLAN Card
Co-located with Sierra Wireless AirCard 555 PCS/Cellular CDMA Modem
CW Mode

Simultaneous Transmit - WLAN Card & PCS CDMA Modem

Mid Channel [2437 MHz]
Peak Conducted Power: 21.1 dBm
Ambient Temp: 23.3°C; Fluid Temp: 22.8°C
Date Tested: December 10, 2002



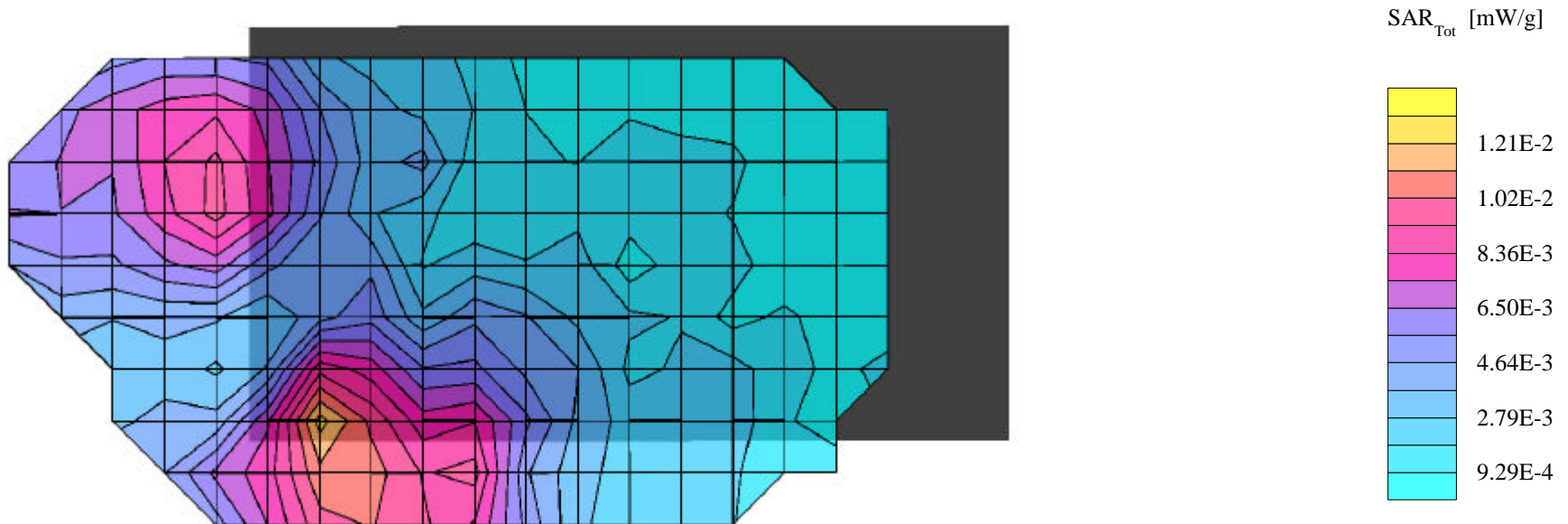
Itronix Corporation FCC ID: KBCIX260AC555-MPI

SAM Phantom; Flat Section; Position: (0°,0°)
Probe: ET3DV6 - SN1387; ConvF(4.30,4.30,4.30); Crest factor: 1.0
2450 MHz Muscle: $\sigma = 2.01$ mho/m $\epsilon_r = 47.7$ $\rho = 1.00$ g/cm³
Coarse: Dx = 15.0, Dy = 15.0, Dz = 10.0
Cube 5x5x7
SAR (1g): 0.0119 mW/g, SAR (10g): 0.0067 mW/g

Body SAR - Bottom of Laptop PC (LCD Display Closed) - Left-Side Antenna
0.0 cm Separation Distance from Bottom of Laptop PC to Planar Phantom
Itronix IX260 Rugged Laptop PC with Cisco MPI-350 Mini-PCI WLAN Card
Co-located with Sierra Wireless AirCard 555 PCS/Cellular CDMA Modem
CW Mode

Single Transmit - WLAN Card only

Mid Channel [2437 MHz]
Peak Conducted Power: 21.1 dBm
Ambient Temp: 23.3°C; Fluid Temp: 22.8°C
Date Tested: December 10, 2002



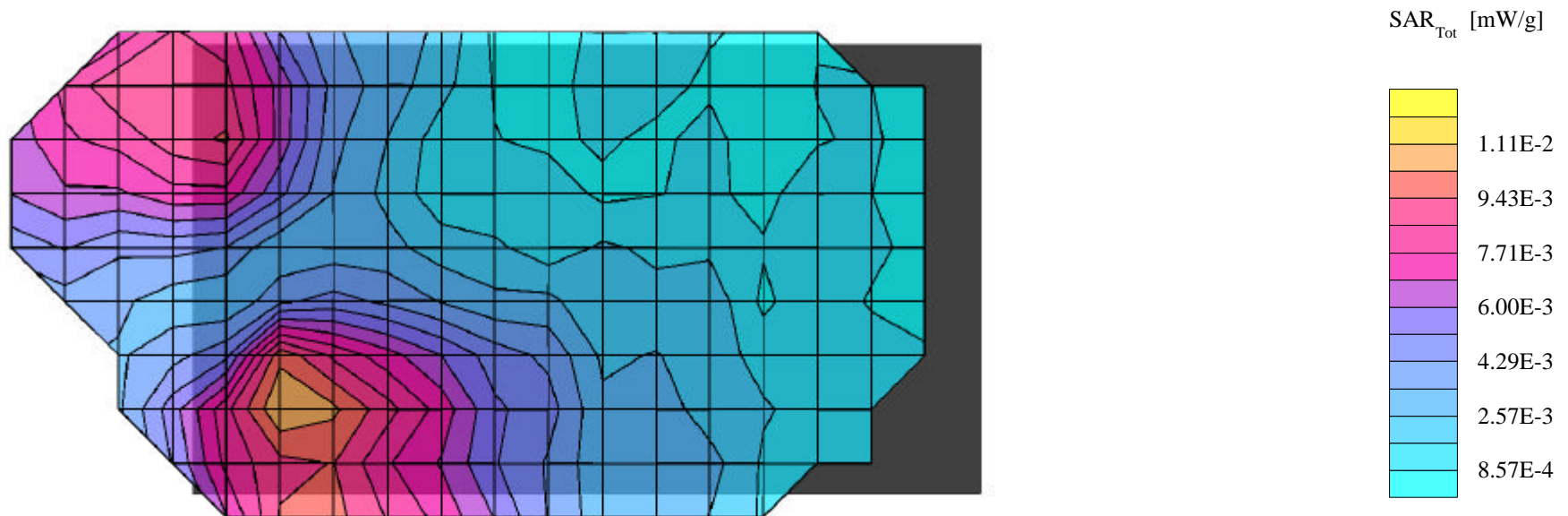
Itronix Corporation FCC ID: KBCIX260AC555-MPI

SAM Phantom; Flat Section; Position: (0°,0°)
Probe: ET3DV6 - SN1387; ConvF(4.30,4.30,4.30); Crest factor: 1.0
2450 MHz Muscle: $\sigma = 2.01$ mho/m $\epsilon_r = 47.7$ $\rho = 1.00$ g/cm³
Coarse: Dx = 15.0, Dy = 15.0, Dz = 10.0
Cube 5x5x7
SAR (1g): 0.0113 mW/g, SAR (10g): 0.0067 mW/g

Body SAR - Bottom of Laptop PC (LCD Display Closed) - Left-Side Antenna
0.0 cm Separation Distance from Bottom of Laptop PC to Planar Phantom
Itronix IX260 Rugged Laptop PC with Cisco MPI-350 Mini-PCI WLAN Card
Co-located with Sierra Wireless AirCard 555 PCS/Cellular CDMA Modem
CW Mode

Simultaneous Transmit - WLAN Card & PCS CDMA Modem

Mid Channel [2437 MHz]
Peak Conducted Power: 21.1 dBm
Ambient Temp: 23.3°C; Fluid Temp: 22.8°C
Date Tested: December 10, 2002



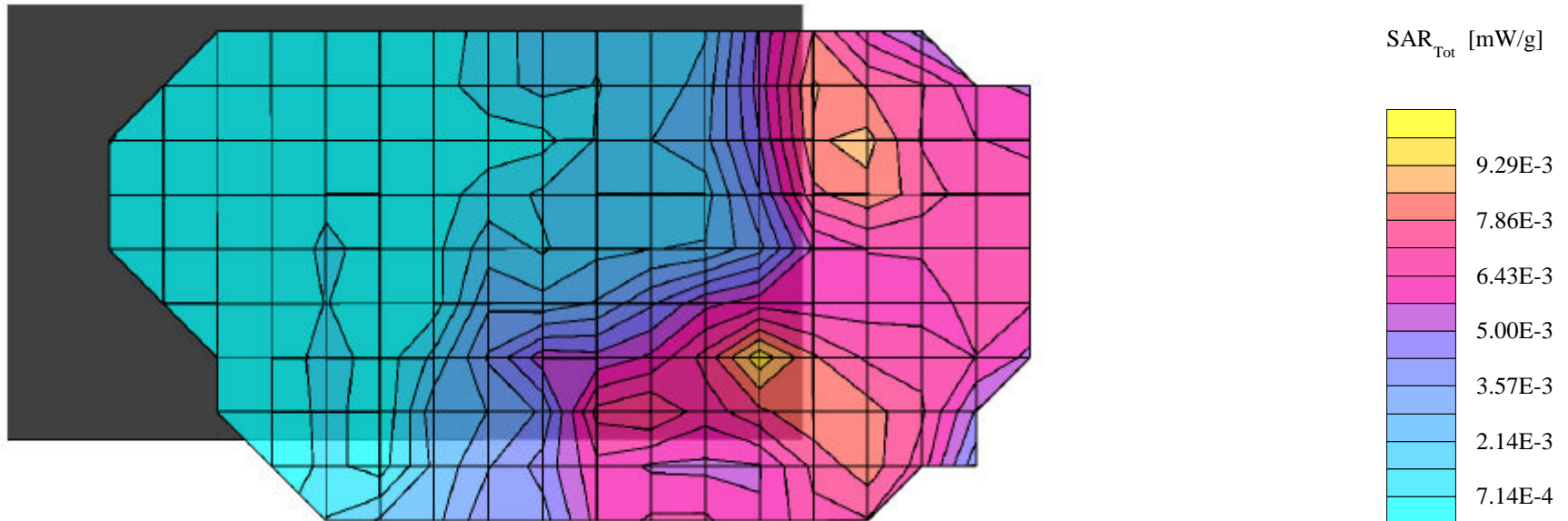
Itronix Corporation FCC ID: KBCIX260AC555-MPI

SAM Phantom; Flat Section; Position: (0°,0°)
Probe: ET3DV6 - SN1387; ConvF(4.30,4.30,4.30); Crest factor: 1.0
2450 MHz Muscle: $\sigma = 2.01$ mho/m $\epsilon_r = 47.7$ $\rho = 1.00$ g/cm³
Coarse: Dx = 15.0, Dy = 15.0, Dz = 10.0
Cube 5x5x7
SAR (1g): 0.0090 mW/g, SAR (10g): 0.0055 mW/g

Body SAR - Bottom of Laptop PC (LCD Display Closed) - Right-Side Antenna
0.0 cm Separation Distance from Bottom of Laptop PC to Planar Phantom
Itronix IX260 Rugged Laptop PC with Cisco MPI-350 Mini-PCI WLAN Card
Co-located with Sierra Wireless AirCard 555 PCS/Cellular CDMA Modem
CW Mode

Single Transmit - WLAN Card only

Mid Channel [2437 MHz]
Peak Conducted Power: 21.1 dBm
Ambient Temp: 23.3°C; Fluid Temp: 22.8°C
Date Tested: December 10, 2002



Itronix Corporation FCC ID: KBCIX260AC555-MPI

SAM Phantom; Flat Section; Position: (0°,0°)
Probe: ET3DV6 - SN1387; ConvF(4.30,4.30,4.30); Crest factor: 1.0
2450 MHz Muscle: $\sigma = 2.01$ mho/m $\epsilon_r = 47.7$ $\rho = 1.00$ g/cm³
Coarse: Dx = 15.0, Dy = 15.0, Dz = 10.0
Cube 5x5x7
SAR (1g): 0.0234 mW/g, SAR (10g): 0.0121 mW/g

Body SAR - Bottom of Laptop PC (LCD Display Closed) - Right-Side Antenna
0.0 cm Separation Distance from Bottom of Laptop PC to Planar Phantom
Itronix IX260 Rugged Laptop PC with Cisco MPI-350 Mini-PCI WLAN Card
Co-located with Sierra Wireless AirCard 555 PCS/Cellular CDMA Modem
CW Mode

Simultaneous Transmit - WLAN Card & PCS CDMA Modem

Mid Channel [2437 MHz]
Peak Conducted Power: 21.1 dBm
Ambient Temp: 23.3°C; Fluid Temp: 22.8°C
Date Tested: December 10, 2002

