

## Itronix Corporation FCC ID: KBCIX260AC555-MPI

SAM Phantom; Flat Section; Position: (0°,0°)

Probe: ET3DV6 - SN1387; ConvF(5.00,5.00,5.00); Crest factor: 1.0

1900 MHz Muscle:  $\sigma = 1.51$  mho/m  $\epsilon_r = 53.3$   $\rho = 1.00$  g/cm<sup>3</sup>

Coarse: Dx = 15.0, Dy = 15.0, Dz = 10.0

Cube 5x5x7

SAR (1g): 1.15 mW/g, SAR (10g): 0.429 mW/g

Body SAR - Back of LCD Display (Closed) - Antenna Parallel to Planar Phantom (Stowed Position)

0.0 cm Separation Distance from Back of LCD Display to Planar Phantom

Itronix IX260 Rugged Laptop PC

with Sierra Wireless AirCard 555 PCS/Cellular CDMA Modem Card

co-located with Cisco MPI-350 Mini-PCI DSSS WLAN Card

PCS CDMA Mode

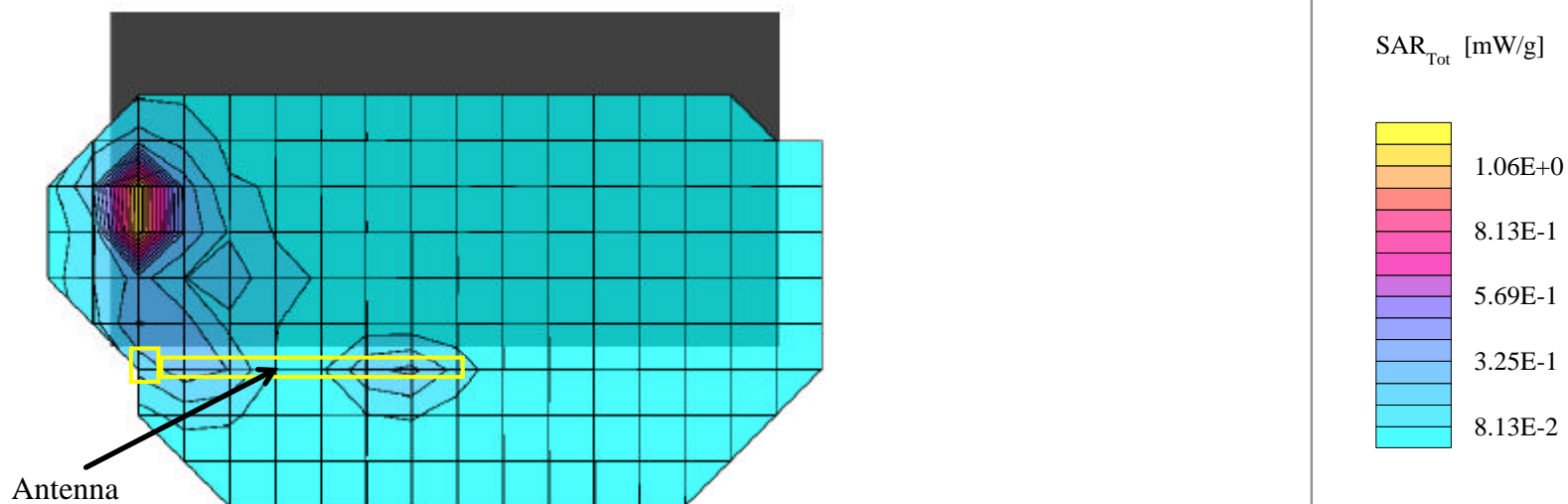
**Simultaneous Transmit with co-located DSSS WLAN Card**

Channel 600 [1880.00 MHz]

Conducted Power: 23.0 dBm

Ambient Temp: 22.2°C; Fluid Temp: 21.4°C

Date Tested: October 31, 2002

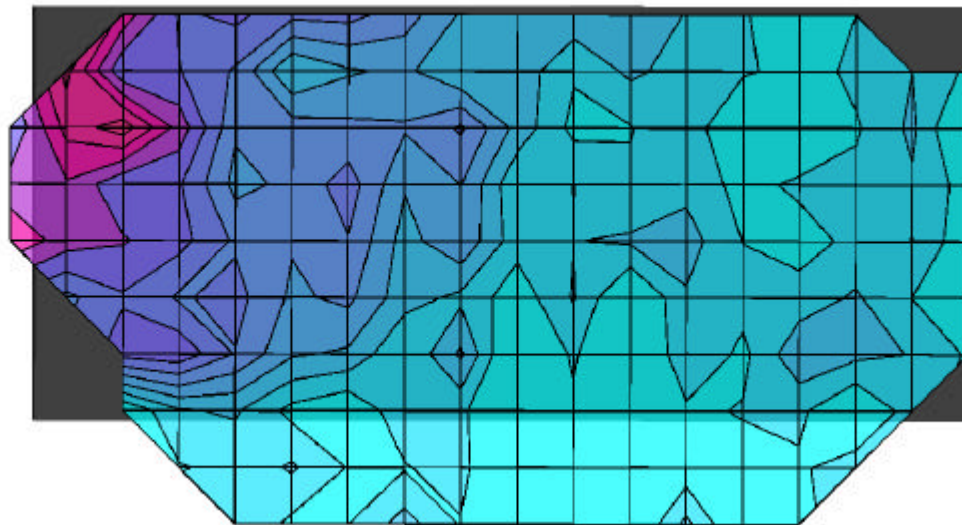


## Itronix Corporation FCC ID: KBCIX260AC555-MPI

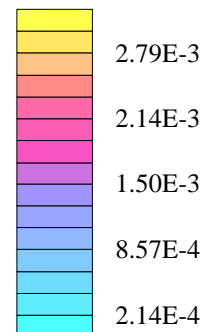
SAM Phantom; Flat Section; Position: (0°,0°)  
Probe: ET3DV6 - SN1387; ConvF(5.00,5.00,5.00); Crest factor: 1.0  
1900 MHz Muscle:  $\sigma = 1.51$  mho/m  $\epsilon_r = 53.3$   $\rho = 1.00$  g/cm<sup>3</sup>  
Coarse: Dx = 15.0, Dy = 15.0, Dz = 10.0

Body SAR - Back of LCD Display (Closed) - Antenna Parallel to Planar Phantom (Stowed Position)  
0.0 cm Separation Distance from back of LCD Display to Planar Phantom  
Itronix IX260 Rugged Laptop PC  
with Sierra Wireless AirCard 555 PCS/Cellular CDMA Modem Card  
co-located with Cisco MPI-350 Mini-PCI DSSS WLAN Card  
PCS CDMA Mode  
**Simultaneous Transmit with co-located DSSS WLAN Card**  
Channel 600 [1880.00 MHz]  
Conducted Power: 23.0 dBm  
Ambient Temp: 22.2°C; Fluid Temp: 21.4°C  
Date Tested: October 31, 2002

### Coarse scan to show Left Half of LCD Display (Back Side)



SAR<sub>Tot</sub> [mW/g]



## Itronix Corporation FCC ID: KBCIX260AC555-MPI

SAM Phantom; Flat Section

Probe: ET3DV6 - SN1387; ConvF(5.00,5.00,5.00); Crest factor: 1.0

1900 MHz Muscle:  $\sigma = 1.51$  mho/m  $\epsilon_r = 53.3$   $\rho = 1.00$  g/cm<sup>3</sup>

## Z-Axis Extrapolation at Peak SAR Location

Body SAR - Back of LCD Display (Closed) - Antenna Parallel to Planar Phantom (Stowed Position)

0.0 cm Separation Distance from Back of LCD Display to Planar Phantom

Itronix IX260 Rugged Laptop PC

with Sierra Wireless AirCard 555 PCS/Cellular CDMA Modem Card

co-located with Cisco MPI-350 Mini-PCI DSSS WLAN Card

PCS CDMA Mode

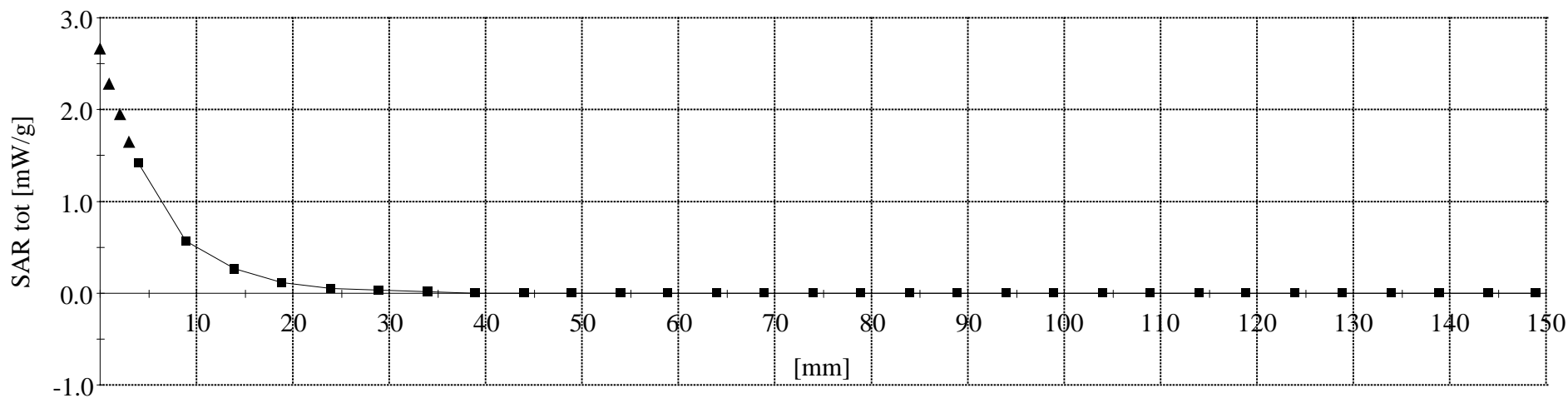
**Simultaneous Transmit with co-located DSSS WLAN Card**

Channel 600 [1880.00 MHz]

Conducted Power: 23.0 dBm

Ambient Temp: 22.2°C; Fluid Temp: 21.4°C

Date Tested: October 31, 2002

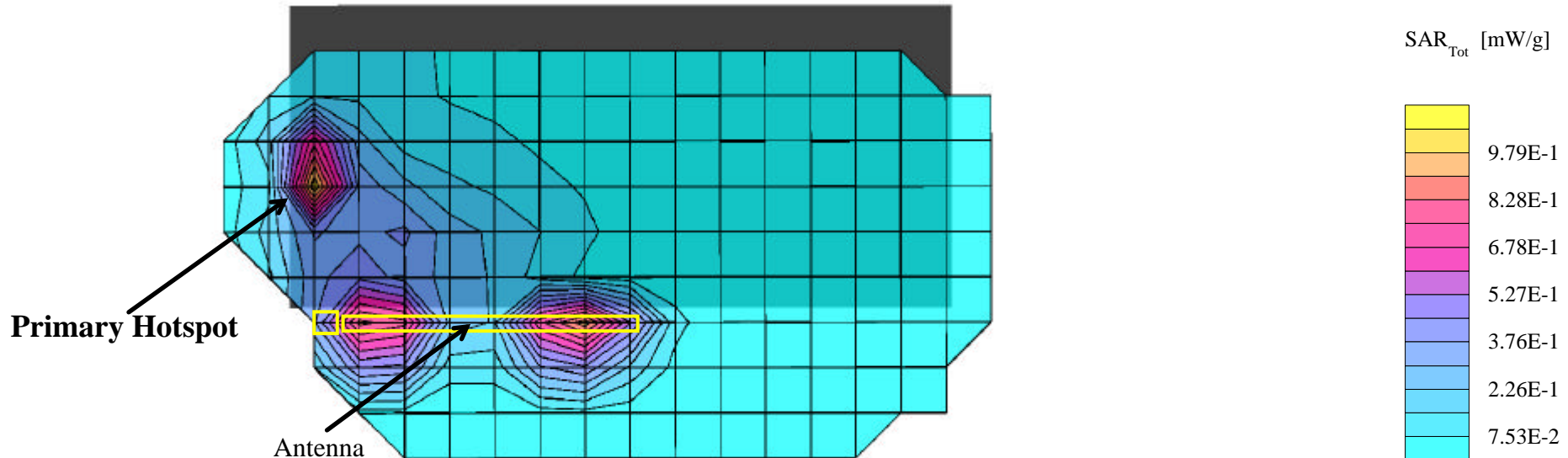


# Itronix Corporation FCC ID: KBCIX260AC555-MPI

SAM Phantom; Flat Section; Position: (0°,0°)  
 Probe: ET3DV6 - SN1387; ConvF(5.00,5.00,5.00); Crest factor: 1.0  
 1900 MHz Muscle:  $\sigma = 1.51$  mho/m  $\epsilon_r = 53.3$   $\rho = 1.00$  g/cm<sup>3</sup>  
 Coarse: Dx = 15.0, Dy = 15.0, Dz = 10.0  
 Cube 5x5x7  
 SAR (1g): 0.899 mW/g, SAR (10g): 0.358 mW/g

Body SAR - Back of LCD Display (Closed) - Antenna Parallel to Planar Phantom (Stowed Position)  
 0.0 cm Separation Distance from Back of LCD Display to Planar Phantom  
 Itronix IX260 Rugged Laptop PC  
 with Sierra Wireless AirCard 555 PCS/Cellular CDMA Modem Card  
 co-located with Cisco MPI-350 Mini-PCI DSSS WLAN Card  
 PCS CDMA Mode  
**Simultaneous Transmit with co-located DSSS WLAN Card**  
 Channel 25 [1851.25 MHz]  
 Conducted Power: 23.0 dBm  
 Ambient Temp: 22.2°C; Fluid Temp: 21.4°C  
 Date Tested: October 31, 2002

## Primary Hotspot Evaluation

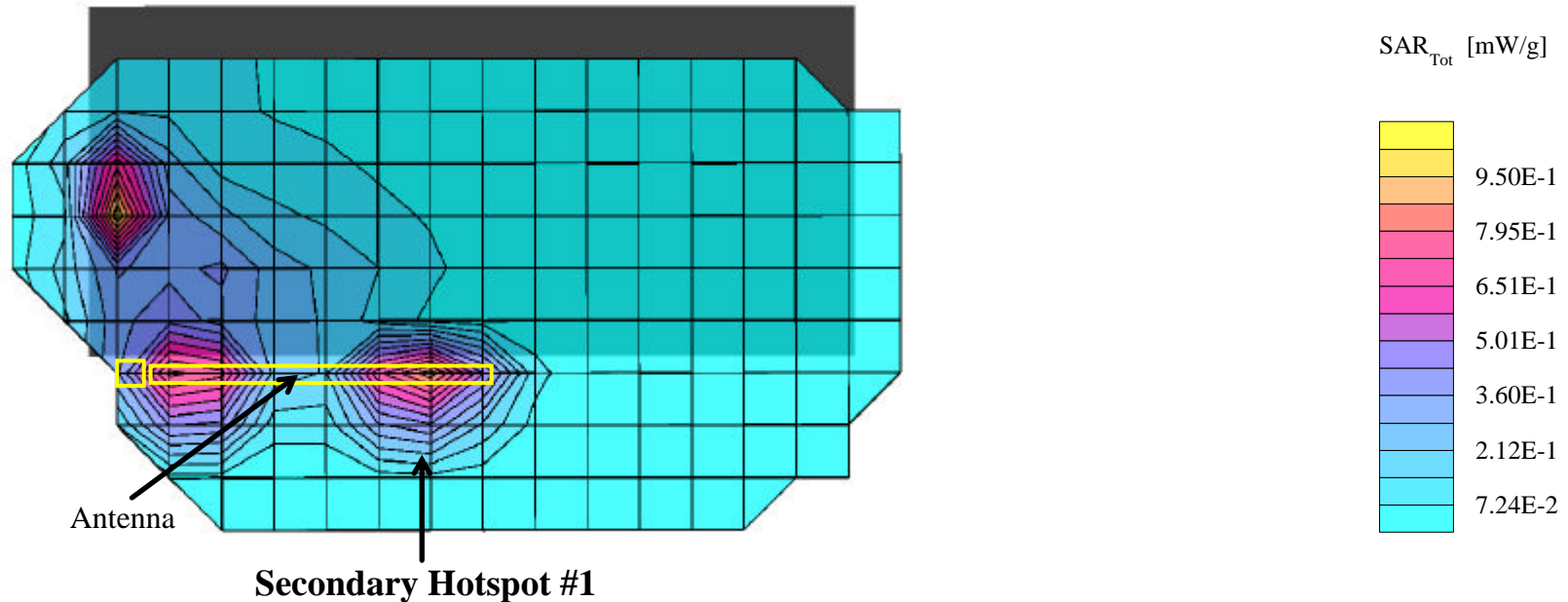


# Itronix Corporation FCC ID: KBCIX260AC555-MPI

SAM Phantom; Flat Section; Position: (0°,0°)  
 Probe: ET3DV6 - SN1387; ConvF(5.00,5.00,5.00); Crest factor: 1.0  
 1900 MHz Muscle:  $\sigma = 1.51$  mho/m  $\epsilon_r = 53.3$   $\rho = 1.00$  g/cm<sup>3</sup>  
 Coarse: Dx = 15.0, Dy = 15.0, Dz = 10.0  
 Cube 5x5x7  
 SAR (1g): 0.853 mW/g, SAR (10g): 0.336 mW/g

Body SAR - Back of LCD Display (Closed) - Antenna Parallel to Planar Phantom (Stowed Position)  
 0.0 cm Separation Distance from Back of LCD Display to Planar Phantom  
 Itronix IX260 Rugged Laptop PC  
 with Sierra Wireless AirCard 555 PCS/Cellular CDMA Modem Card  
 co-located with Cisco MPI-350 Mini-PCI DSSS WLAN Card  
 PCS CDMA Mode  
**Simultaneous Transmit with co-located DSSS WLAN Card**  
 Channel 25 [1851.25 MHz]  
 Conducted Power: 23.0 dBm  
 Ambient Temp: 22.2°C; Fluid Temp: 21.4°C  
 Date Tested: October 31, 2002

## Secondary Hotspot Evaluation #1

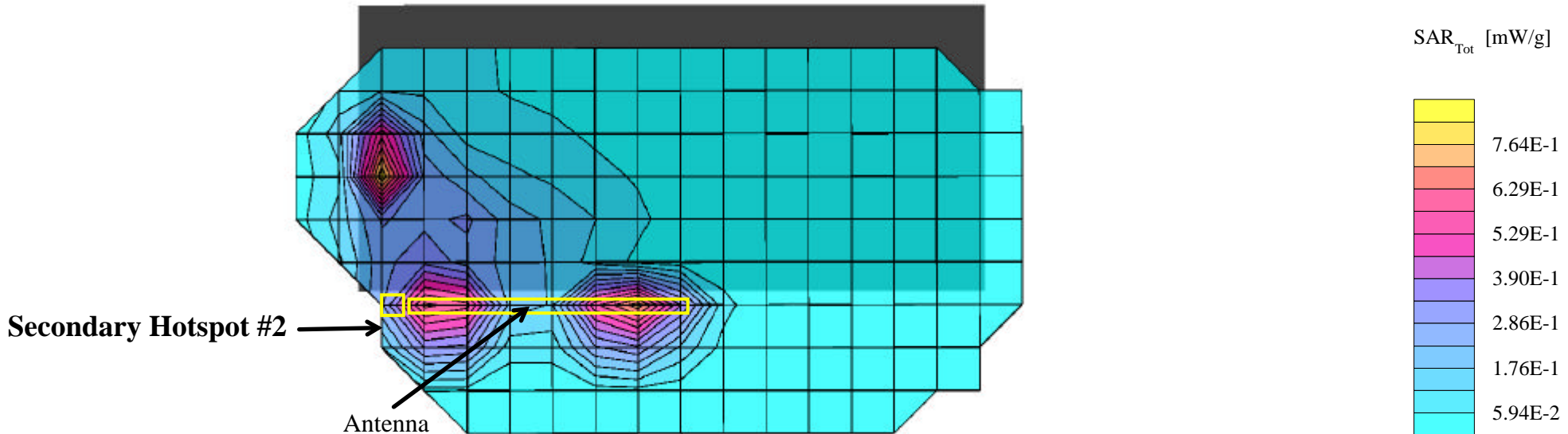


# Itronix Corporation FCC ID: KBCIX260AC555-MPI

SAM Phantom; Flat Section; Position: (0°,0°)  
 Probe: ET3DV6 - SN1387; ConvF(5.00,5.00,5.00); Crest factor: 1.0  
 1900 MHz Muscle:  $\sigma = 1.51$  mho/m  $\epsilon_r = 53.3$   $\rho = 1.00$  g/cm<sup>3</sup>  
 Coarse: Dx = 15.0, Dy = 15.0, Dz = 10.0  
 Cube 5x5x7  
 SAR (1g): 0.731 mW/g, SAR (10g): 0.294 mW/g

Body SAR - Back of LCD Display (Closed) - Antenna Parallel to Planar Phantom (Stowed Position)  
 0.0 cm Separation Distance from Back of LCD Display to Planar Phantom  
 Itronix IX260 Rugged Laptop PC  
 with Sierra Wireless AirCard 555 PCS/Cellular CDMA Modem Card  
 co-located with Cisco MPI-350 Mini-PCI DSSS WLAN Card  
 PCS CDMA Mode  
**Simultaneous Transmit with co-located DSSS WLAN Card**  
 Channel 25 [1851.25 MHz]  
 Conducted Power: 23.0 dBm  
 Ambient Temp: 22.2°C; Fluid Temp: 21.4°C  
 Date Tested: October 31, 2002

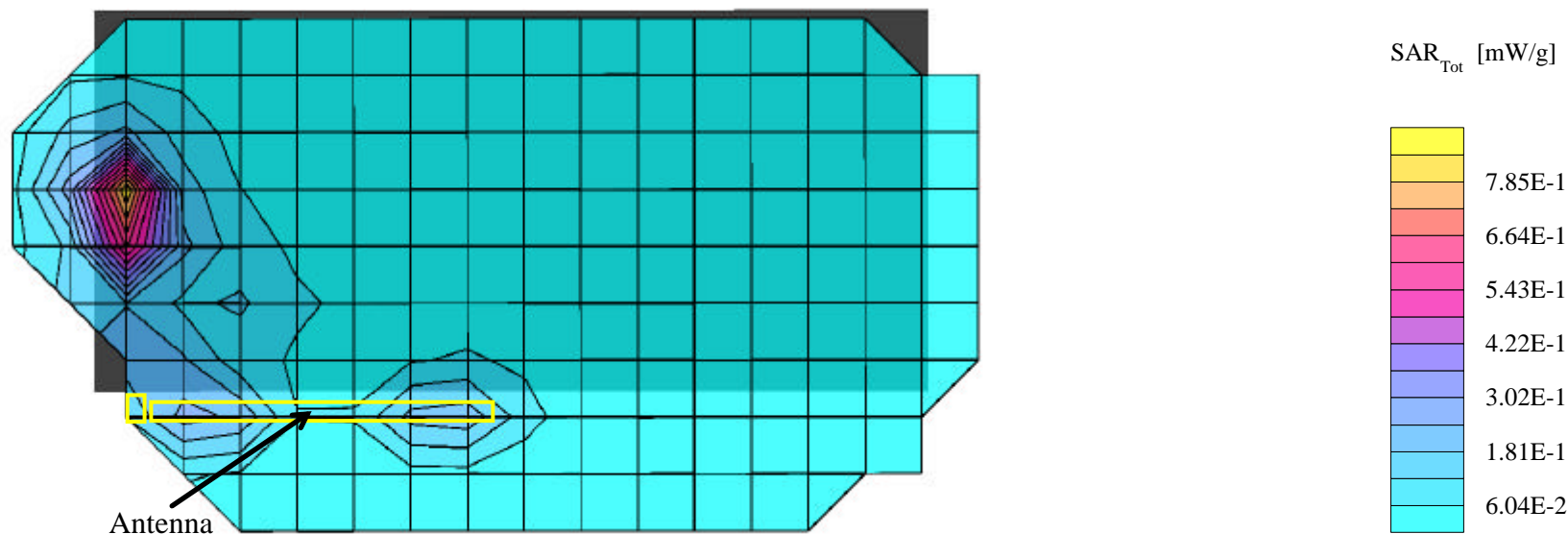
## Secondary Hotspot Evaluation #2



# Itronix Corporation FCC ID: KBCIX260AC555-MPI

SAM Phantom; Flat Section; Position: (0°,0°)  
Probe: ET3DV6 - SN1387; ConvF(5.00,5.00,5.00); Crest factor: 1.0  
1900 MHz Muscle:  $\sigma = 1.51$  mho/m  $\epsilon_r = 53.3$   $\rho = 1.00$  g/cm<sup>3</sup>  
Coarse: Dx = 15.0, Dy = 15.0, Dz = 10.0  
Cube 5x5x7  
SAR (1g): 0.837 mW/g, SAR (10g): 0.318 mW/g

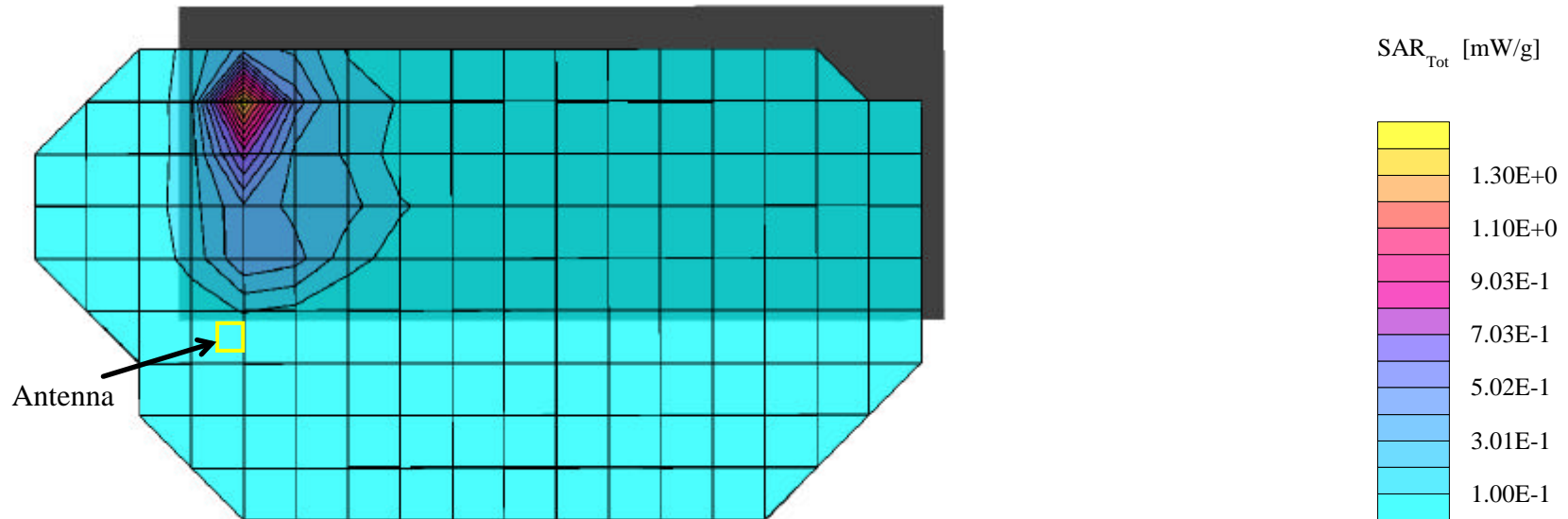
Body SAR - Back of LCD Display (Closed) - Antenna Parallel to Planar Phantom (Stowed Position)  
0.0 cm Separation Distance from Back of LCD Display to Planar Phantom  
Itronix IX260 Rugged Laptop PC  
with Sierra Wireless AirCard 555 PCS/Cellular CDMA Modem Card  
co-located with Cisco MPI-350 Mini-PCI DSSS WLAN Card  
PCS CDMA Mode  
**Simultaneous Transmit with co-located DSSS WLAN Card**  
Channel 1175 [1908.75 MHz]  
Conducted Power: 23.0 dBm  
Ambient Temp: 22.2°C; Fluid Temp: 21.4°C  
Date Tested: October 31, 2002



# Itronix Corporation FCC ID: KBCIX260AC555-MPI

SAM Phantom; Flat Section; Position: (0°,0°)  
Probe: ET3DV6 - SN1387; ConvF(5.00,5.00,5.00); Crest factor: 1.0  
1900 MHz Muscle:  $\sigma = 1.51$  mho/m  $\epsilon_r = 53.3$   $\rho = 1.00$  g/cm<sup>3</sup>  
Coarse: Dx = 15.0, Dy = 15.0, Dz = 10.0  
Cube 5x5x7  
SAR (1g): 0.498 mW/g, SAR (10g): 0.201 mW/g

Body SAR - Back of LCD Display (Closed) - Antenna Perpendicular to Planar Phantom (180°)  
0.0 cm Separation Distance from Back of LCD Display to Planar Phantom  
Itronix IX260 Rugged Laptop PC  
with Sierra Wireless AirCard 555 PCS/Cellular CDMA Modem Card  
co-located with Cisco MPI-350 Mini-PCI DSSS WLAN Card  
PCS CDMA Mode  
**Simultaneous Transmit with co-located DSSS WLAN Card**  
Channel 600 [1880.00 MHz]  
Conducted Power: 23.0 dBm  
Ambient Temp: 22.2°C; Fluid Temp: 21.4°C  
Date Tested: October 31, 2002



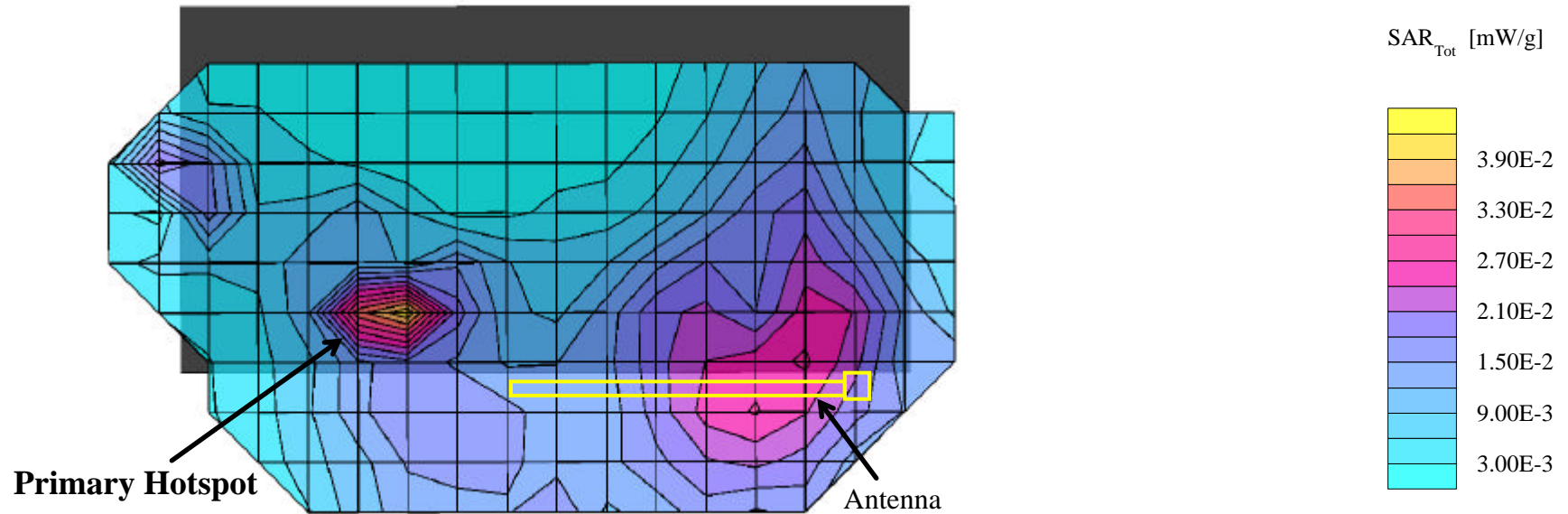


## Itronix Corporation FCC ID: KBCIX260AC555-MPI

SAM Phantom; Flat Section; Position: (0°,0°)  
 Probe: ET3DV6 - SN1387; ConvF(5.00,5.00,5.00); Crest factor: 1.0  
 1900 MHz Muscle:  $\sigma = 1.51$  mho/m  $\epsilon_r = 53.3$   $\rho = 1.00$  g/cm<sup>3</sup>  
 Coarse: Dx = 15.0, Dy = 15.0, Dz = 10.0  
 Cube 5x5x7  
 SAR (1g): 0.0161 mW/g, SAR (10g): 0.0080 mW/g

Body SAR - Bottom of Laptop PC (LCD Display Closed) - Antenna Parallel to Planar Phantom (Stowed Position)  
 0.0 cm Separation Distance from Bottom of Laptop PC to Planar Phantom  
 Itronix IX260 Rugged Laptop PC  
 with Sierra Wireless AirCard 555 PCS/Cellular CDMA Modem Card  
 co-located with Cisco MPI-350 Mini-PCI DSSS WLAN Card  
 PCS CDMA Mode  
**Simultaneous Transmit with co-located DSSS WLAN Card**  
 Channel 600 [1880.00 MHz]  
 Conducted Power: 23.0 dBm  
 Ambient Temp: 22.2°C; Fluid Temp: 21.4°C  
 Date Tested: October 31, 2002

### Primary Hotspot Evaluation

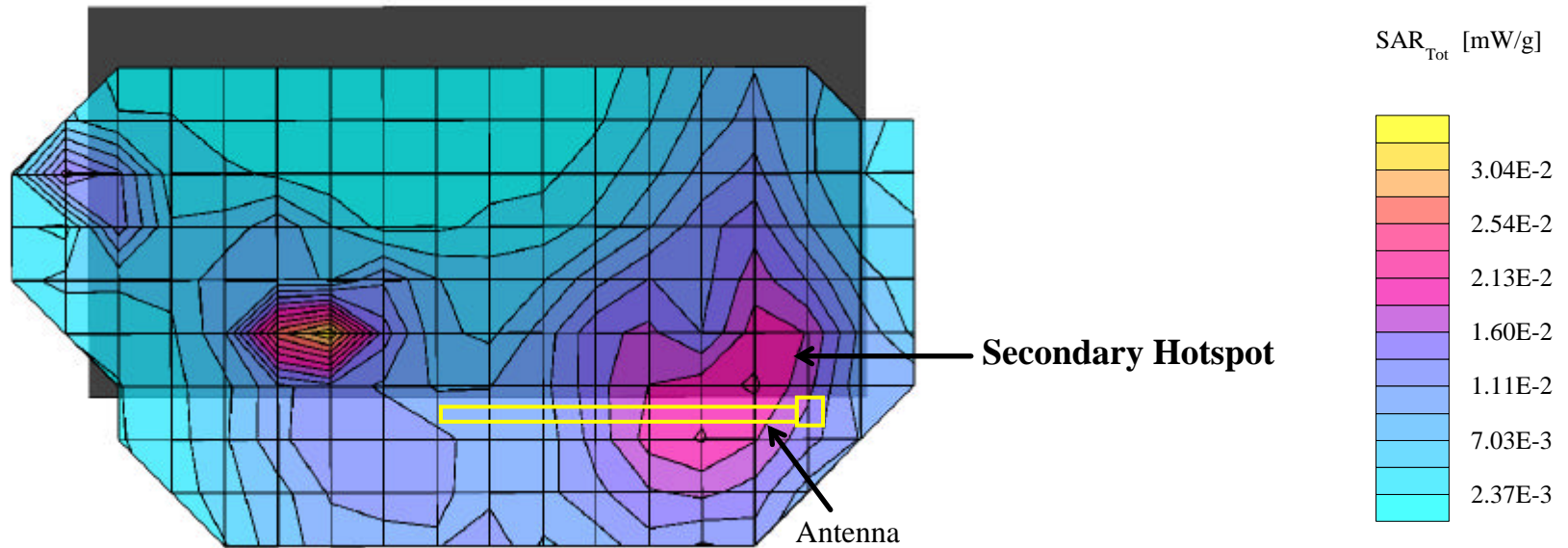


# Itronix Corporation FCC ID: KBCIX260AC555-MPI

SAM Phantom; Flat Section; Position: (0°,0°)  
 Probe: ET3DV6 - SN1387; ConvF(5.00,5.00,5.00); Crest factor: 1.0  
 1900 MHz Muscle:  $\sigma = 1.51$  mho/m  $\epsilon_r = 53.3$   $\rho = 1.00$  g/cm<sup>3</sup>  
 Coarse: Dx = 15.0, Dy = 15.0, Dz = 10.0  
 Cube 5x5x7  
 SAR (1g): 0.0132 mW/g, SAR (10g): 0.0066 mW/g

Body SAR - Bottom of Laptop PC (LCD Display Closed) - Antenna Parallel to Planar Phantom (Stowed Position)  
 0.0 cm Separation Distance from Bottom of Laptop PC to Planar Phantom  
 Itronix IX260 Rugged Laptop PC  
 with Sierra Wireless AirCard 555 PCS/Cellular CDMA Modem Card  
 co-located with Cisco MPI-350 Mini-PCI DSSS WLAN Card  
 PCS CDMA Mode  
**Simultaneous Transmit with co-located DSSS WLAN Card**  
 Channel 600 [1880.00 MHz]  
 Conducted Power: 23.0 dBm  
 Ambient Temp: 22.2°C; Fluid Temp: 21.4°C  
 Date Tested: October 31, 2002

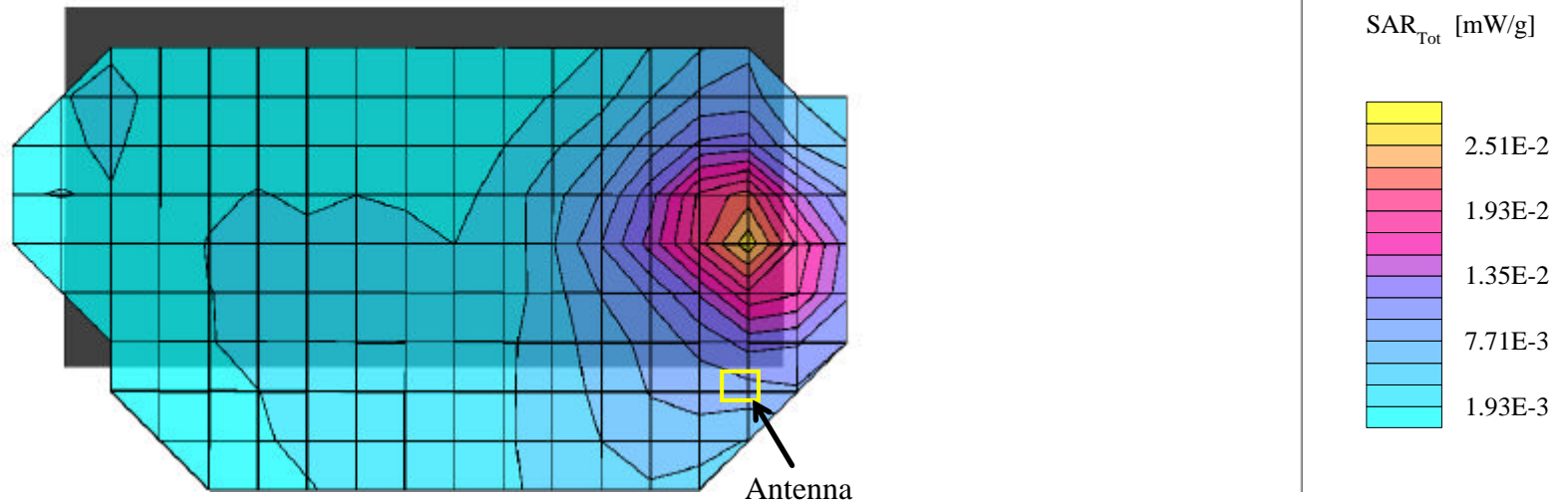
## Secondary Hotspot Evaluation



## Itronix Corporation FCC ID: KBCIX260AC555-MPI

SAM Phantom; Flat Section; Position: (0°,0°)  
 Probe: ET3DV6 - SN1387; ConvF(5.00,5.00,5.00); Crest factor: 1.0  
 1900 MHz Muscle:  $\sigma = 1.51$  mho/m  $\epsilon_r = 53.3$   $\rho = 1.00$  g/cm<sup>3</sup>  
 Coarse: Dx = 15.0, Dy = 15.0, Dz = 10.0  
 Cube 5x5x7  
 SAR (1g): 0.0249 mW/g, SAR (10g): 0.0140 mW/g

Body SAR - Bottom of Laptop PC (LCD Display Closed) - Antenna Perpendicular to Planar Phantom (Extended Position)  
 0.0 cm Separation Distance from Bottom of Laptop PC to Planar Phantom  
 Itronix IX260 Rugged Laptop PC  
 with Sierra Wireless AirCard 555 PCS/Cellular CDMA Modem Card  
 co-located with Cisco MPI-350 Mini-PCI DSSS WLAN Card  
 PCS CDMA Mode  
**Simultaneous Transmit with co-located DSSS WLAN Card**  
 Channel 600 [1880.00 MHz]  
 Conducted Power: 23.0 dBm  
 Ambient Temp: 22.2°C; Fluid Temp: 21.4°C  
 Date Tested: October 31, 2002



## Itronix Corporation FCC ID: KBCIX260AC555-MPI

SAM Phantom; Flat Section; Position: (0°,0°)

Probe: ET3DV6 - SN1387; ConvF(5.00,5.00,5.00); Crest factor: 1.0

1900 MHz Muscle:  $\sigma = 1.51$  mho/m  $\epsilon_r = 53.3$   $\rho = 1.00$  g/cm<sup>3</sup>

Coarse: Dx = 15.0, Dy = 15.0, Dz = 10.0

Body SAR - Bottom of Laptop PC (LCD Display Closed) - Antenna Perpendicular to Planar Phantom (Extended Position)

0.0 cm Separation Distance from Bottom of Laptop PC to Planar Phantom

Itronix IX260 Rugged Laptop PC

with Sierra Wireless AirCard 555 PCS/Cellular CDMA Modem Card

co-located with Cisco MPI-350 Mini-PCI DSSS WLAN Card

PCS CDMA Mode

**Simultaneous Transmit with co-located DSSS WLAN Card**

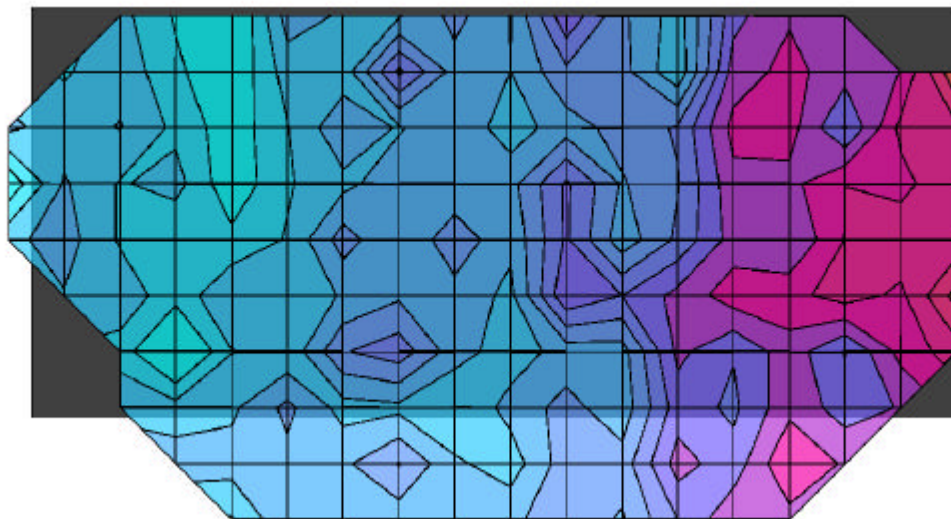
Channel 600 [1880.00 MHz]

Conducted Power: 23.0 dBm

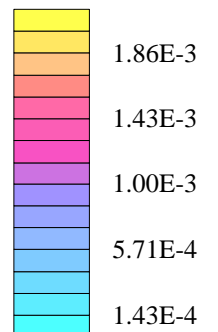
Ambient Temp: 22.2°C; Fluid Temp: 21.4°C

Date Tested: October 31, 2002

### Coarse scan to show Left Half of Bottom Side



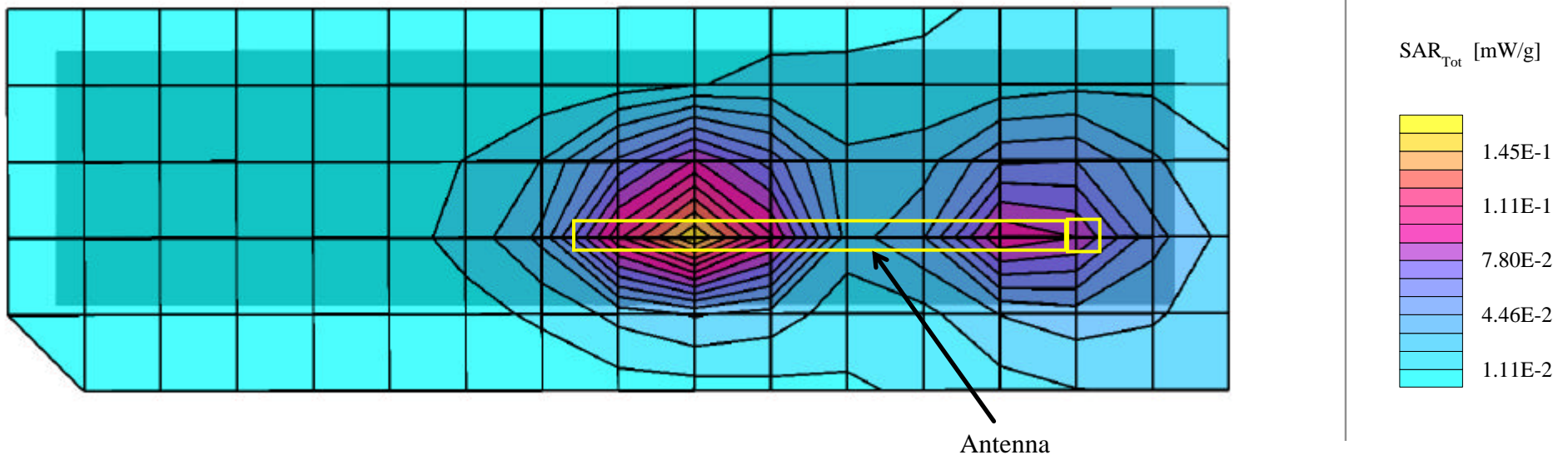
SAR<sub>Tot</sub> [mW/g]



## Itronix Corporation FCC ID: KBCIX260AC555-MPI

SAM Phantom; Flat Section; Position: (0°,0°)  
 Probe: ET3DV6 - SN1387; ConvF(5.00,5.00,5.00); Crest factor: 1.0  
 1900 MHz Muscle:  $\sigma = 1.51$  mho/m  $\epsilon_r = 53.3$   $\rho = 1.00$  g/cm<sup>3</sup>  
 Coarse: Dx = 15.0, Dy = 15.0, Dz = 10.0  
 Cube 5x5x7  
 SAR (1g): 0.150 mW/g, SAR (10g): 0.0804 mW/g

Body SAR - Right Side of LCD Display (Closed) - Antenna Parallel to Planar Phantom (Stowed Position)  
 1.5 cm Separation Distance from Antenna to Planar Phantom  
 Itronix IX260 Rugged Laptop PC  
 with Sierra Wireless AirCard 555 PCS/Cellular CDMA Modem Card  
 co-located with Cisco MPI-350 Mini-PCI DSSS WLAN Card  
 PCS CDMA Mode  
**Simultaneous Transmit with co-located DSSS WLAN Card**  
 Channel 600 [1880.00 MHz]  
 Conducted Power: 23.0 dBm  
 Ambient Temp: 22.2°C; Fluid Temp: 21.4°C  
 Date Tested: October 31, 2002

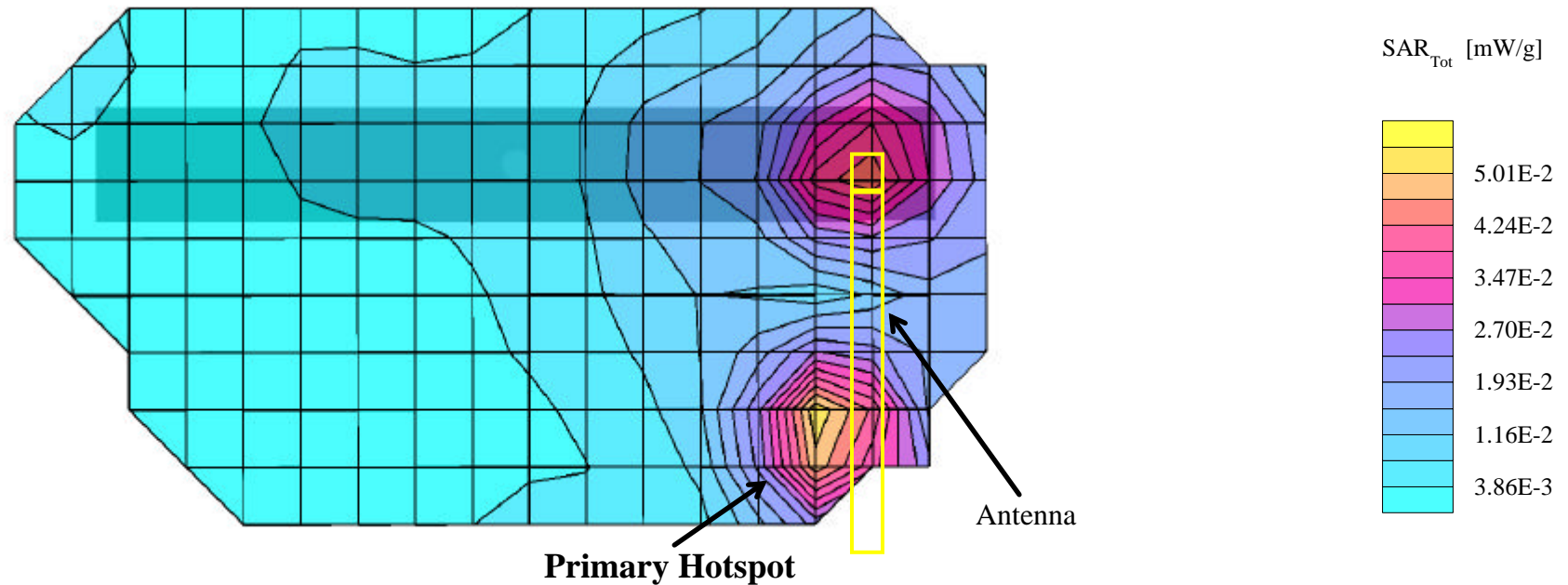


## Itronix Corporation FCC ID: KBCIX260AC555-MPI

SAM Phantom; Flat Section; Position: (90°,0°)  
 Probe: ET3DV6 - SN1387; ConvF(5.00,5.00,5.00); Crest factor: 1.0  
 1900 MHz Muscle:  $\sigma = 1.51$  mho/m  $\epsilon_r = 53.3$   $\rho = 1.00$  g/cm<sup>3</sup>  
 Coarse: Dx = 15.0, Dy = 15.0, Dz = 10.0  
 Cube 5x5x7  
 SAR (1g): 0.0508 mW/g, SAR (10g): 0.0292 mW/g

Body SAR - Right Side of LCD Display (Closed) - Antenna Parallel to Planar Phantom (Extended Position)  
 1.5 cm Separation Distance from Antenna to Planar Phantom  
 Itronix IX260 Rugged Laptop PC  
 with Sierra Wireless AirCard 555 PCS/Cellular CDMA Modem Card  
 co-located with Cisco MPI-350 Mini-PCI DSSS WLAN Card  
 PCS CDMA Mode  
**Simultaneous Transmit with co-located DSSS WLAN Card**  
 Channel 600 [1880.00 MHz]  
 Conducted Power: 23.0 dBm  
 Ambient Temp: 22.2°C; Fluid Temp: 21.4°C  
 Date Tested: October 31, 2002

### Primary Hotspot Evaluation



## Itronix Corporation FCC ID: KBCIX260AC555-MPI

SAM Phantom; Flat Section; Position: (90°,0°)  
 Probe: ET3DV6 - SN1387; ConvF(5.00,5.00,5.00); Crest factor: 1.0  
 1900 MHz Muscle:  $\sigma = 1.51$  mho/m  $\epsilon_r = 53.3$   $\rho = 1.00$  g/cm<sup>3</sup>  
 Coarse: Dx = 15.0, Dy = 15.0, Dz = 10.0  
 Cube 5x5x7  
 SAR (1g): 0.0384 mW/g, SAR (10g): 0.0223 mW/g

Body SAR - Right Side of LCD Display (Closed) - Antenna Parallel to Planar Phantom (Extended Position)  
 1.5 cm Separation Distance from Antenna to Planar Phantom  
 Itronix IX260 Rugged Laptop PC  
 with Sierra Wireless AirCard 555 PCS/Cellular CDMA Modem Card  
 co-located with Cisco MPI-350 Mini-PCI DSSS WLAN Card  
 PCS CDMA Mode  
**Simultaneous Transmit with co-located DSSS WLAN Card**  
 Channel 600 [1880.00 MHz]  
 Conducted Power: 23.0 dBm  
 Ambient Temp: 22.2°C; Fluid Temp: 21.4°C  
 Date Tested: October 31, 2002

### Secondary Hotspot Evaluation

