

Itronix Corporation FCC ID: KBCIX260AC555-MPI

SAM Phantom; Flat Section; Position: (0°,0°)

Probe: ET3DV6 - SN1387; ConvF(5.00,5.00,5.00); Crest factor: 1.0

1900 MHz Muscle: $\sigma = 1.51$ mho/m $\epsilon_r = 53.3$ $\rho = 1.00$ g/cm³

Coarse: Dx = 15.0, Dy = 15.0, Dz = 10.0

Cube 5x5x7

SAR (1g): 1.05 mW/g, SAR (10g): 0.521 mW/g

Body SAR - Back of LCD Display (Closed) - Antenna Parallel to Planar Phantom (Stowed Position)

0.0 cm Separation Distance from Back of LCD Display to Planar Phantom

Itronix IX260 Rugged Laptop PC

with Sierra Wireless AirCard 555 PCS/Cellular CDMA Modem Card

co-located with Cisco MPI-350 Mini-PCI DSSS WLAN Card

PCS CDMA Mode

Single Transmit - PCS CDMA only

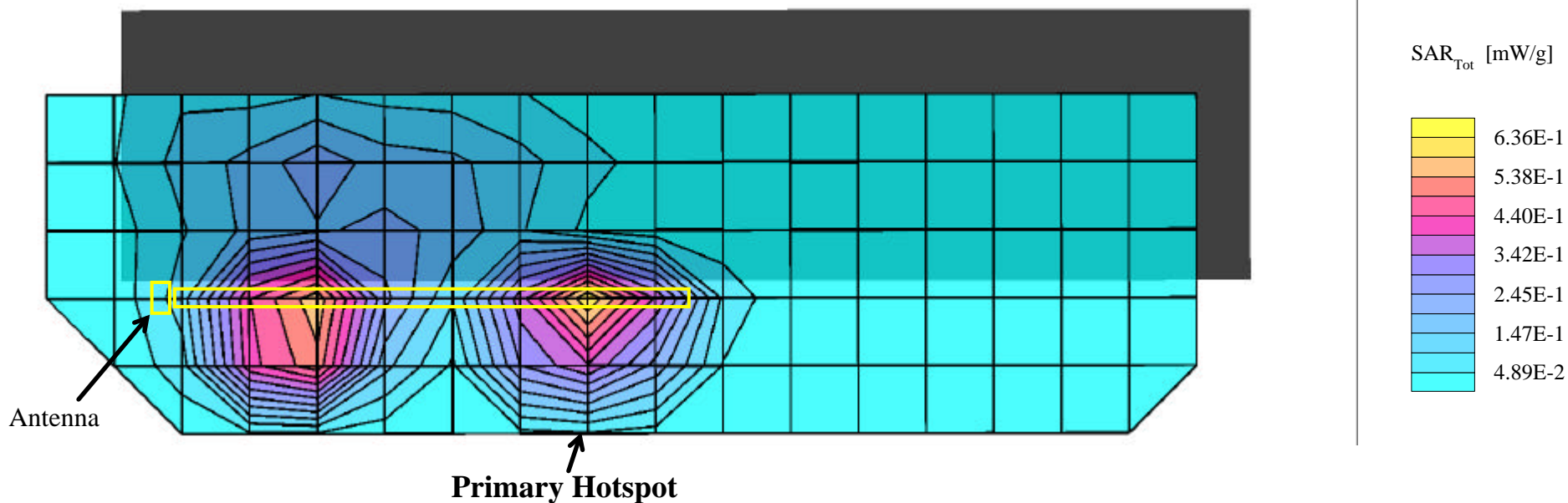
Channel 600 [1880.00 MHz]

Conducted Power: 23.0 dBm

Ambient Temp: 22.2°C; Fluid Temp: 21.4°C

Date Tested: October 31, 2002

Primary Hotspot Evaluation



Itronix Corporation FCC ID: KBCIX260AC555-MPI

SAM Phantom; Flat Section; Position: (0°,0°)

Probe: ET3DV6 - SN1387; ConvF(5.00,5.00,5.00); Crest factor: 1.0

1900 MHz Muscle: $\sigma = 1.51$ mho/m $\epsilon_r = 53.3$ $\rho = 1.00$ g/cm³

Coarse: Dx = 15.0, Dy = 15.0, Dz = 10.0

Cube 5x5x7

SAR (1g): 0.573 mW/g, SAR (10g): 0.289 mW/g

Body SAR - Back of LCD Display (Closed) - Antenna Parallel to Planar Phantom (Stowed Position)

0.0 cm Separation Distance from Back of LCD Display to Planar Phantom

Itronix IX260 Rugged Laptop PC

with Sierra Wireless AirCard 555 PCS/Cellular CDMA Modem Card

co-located with Cisco MPI-350 Mini-PCI DSSS WLAN Card

PCS CDMA Mode

Single Transmit - PCS CDMA only

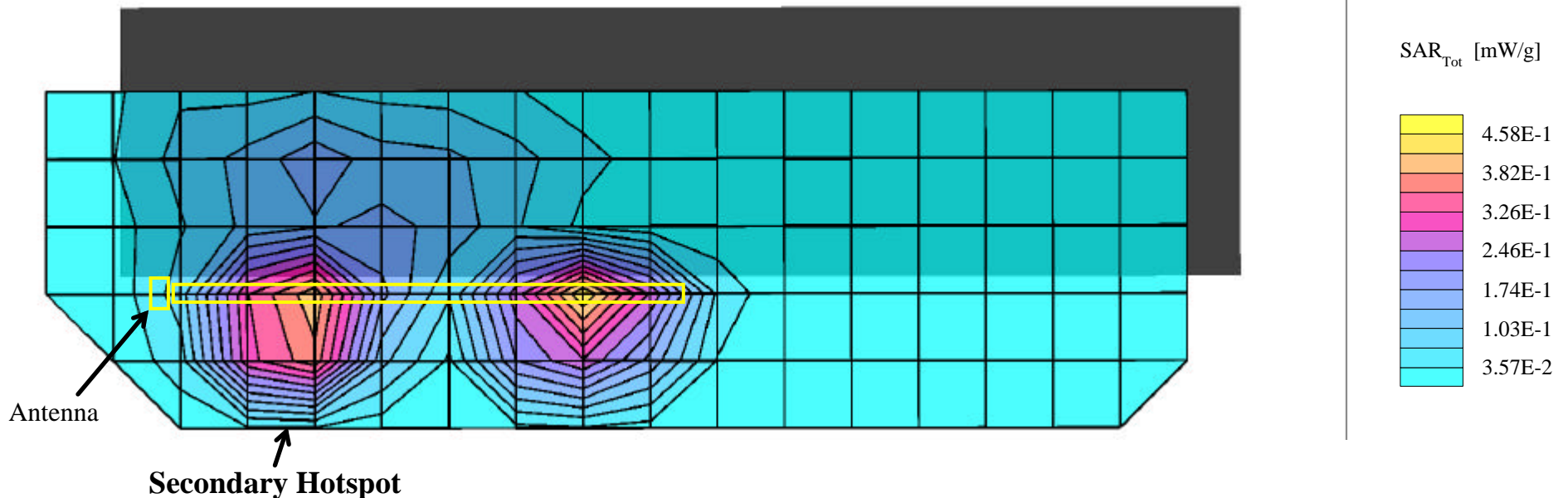
Channel 600 [1880.00 MHz]

Conducted Power: 23.0 dBm

Ambient Temp: 22.2°C; Fluid Temp: 21.4°C

Date Tested: October 31, 2002

Secondary Hotspot Evaluation

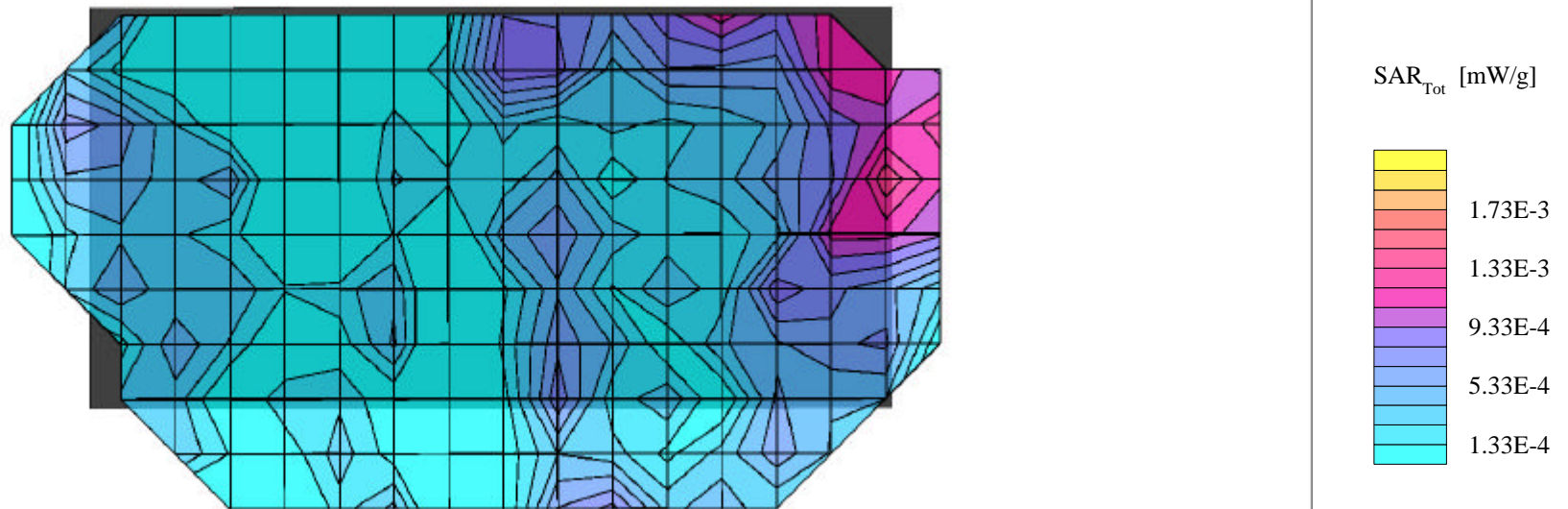


Itronix Corporation FCC ID: KBCIX260AC555-MPI

SAM Phantom; Flat Section; Position: (0°,0°)
Probe: ET3DV6 - SN1387; ConvF(5.00,5.00,5.00); Crest factor: 1.0
1900 MHz Muscle: $\sigma = 1.51$ mho/m $\epsilon_r = 53.3$ $\rho = 1.00$ g/cm³
Coarse: Dx = 15.0, Dy = 15.0, Dz = 10.0

Body SAR - Back of LCD Display (Closed) - Antenna Parallel to Planar Phantom (Stowed Position)
0.0 cm Separation Distance from back of LCD Display to Planar Phantom
Itronix IX260 Rugged Laptop PC
with Sierra Wireless AirCard 555 PCS/Cellular CDMA Modem Card
(co-located with Cisco MPI-350 Mini-PCI DSSS WLAN Card)
PCS CDMA Mode
Single Transmit - PCS CDMA only
Channel 0600 [1880.00 MHz]
Conducted Power: 23.0 dBm
Ambient Temp: 22.2°C; Fluid Temp: 21.4°C
Date Tested: October 31, 2002

Coarse scan to show Left Half of LCD Display (Back Side)



Itronix Corporation FCC ID: KBCIX260AC555-MPI

SAM Phantom; Flat Section; Position: (270°,0°)

Probe: ET3DV6 - SN1387; ConvF(5.00,5.00,5.00); Crest factor: 1.0

1900 MHz Muscle: $\sigma = 1.51$ mho/m $\epsilon_r = 53.3$ $\rho = 1.00$ g/cm³

Coarse: Dx = 15.0, Dy = 15.0, Dz = 10.0

Cube 5x5x7

SAR (1g): 0.961 mW/g, SAR (10g): 0.492 mW/g

Body SAR - Back of LCD Display (Closed) - Antenna Parallel to Planar Phantom (Stowed Position)

0.0 cm Separation Distance from Back of LCD Display to Planar Phantom

Itronix IX260 Rugged Laptop PC

with Sierra Wireless AirCard 555 PCS/Cellular CDMA Modem Card

(co-located with Cisco MPI-350 Mini-PCI DSSS WLAN Card)

PCS CDMA Mode

Single Transmit - PCS CDMA only

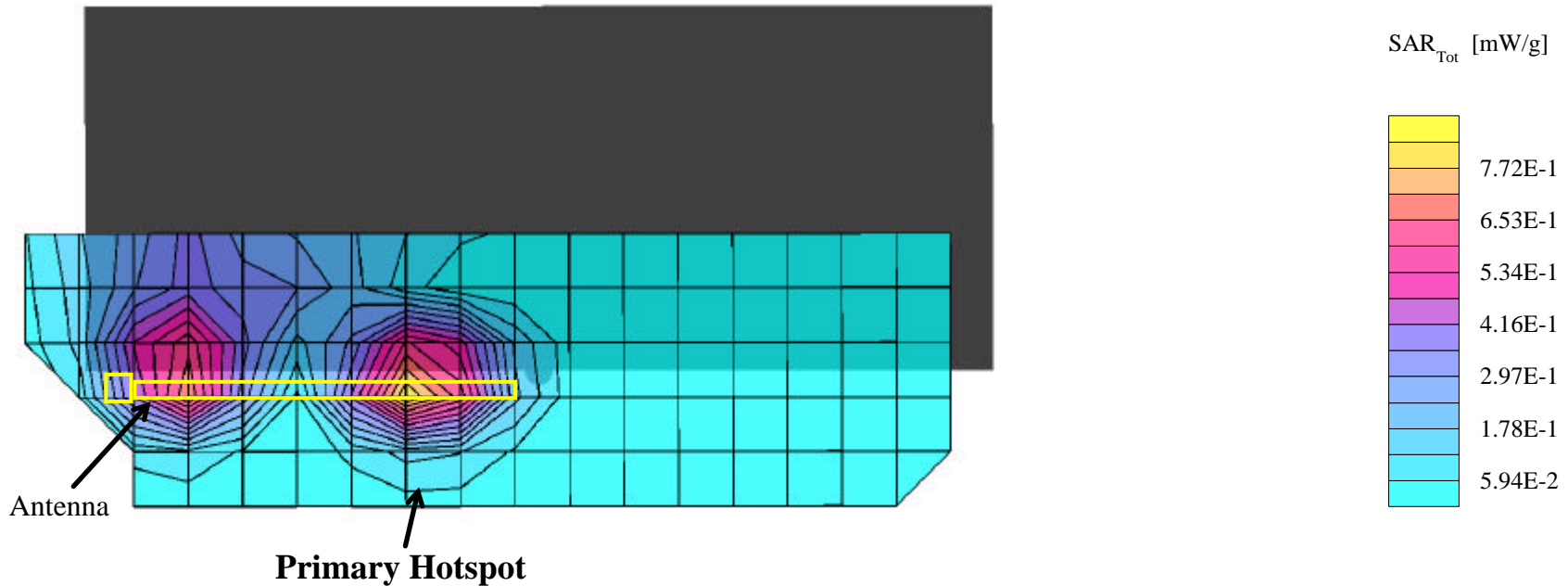
Channel 25 [1851.25 MHz]

Conducted Power: 23.0 dBm

Ambient Temp: 22.2°C; Fluid Temp: 21.4°C

Date Tested: October 31, 2002

Primary Hotspot Evaluation



Itronix Corporation FCC ID: KBCIX260AC555-MPI

SAM Phantom; Flat Section; Position: (270°,0°)

Probe: ET3DV6 - SN1387; ConvF(5.00,5.00,5.00); Crest factor: 1.0

1900 MHz Muscle: $\sigma = 1.51$ mho/m $\epsilon_r = 53.3$ $\rho = 1.00$ g/cm³

Coarse: Dx = 15.0, Dy = 15.0, Dz = 10.0

Cube 5x5x7

SAR (1g): 0.635 mW/g, SAR (10g): 0.331 mW/g

Body SAR - Back of LCD Display (Closed) - Antenna Parallel to Planar Phantom (Stowed Position)

0.0 cm Separation Distance from Back of LCD Display to Planar Phantom

Itronix IX260 Rugged Laptop PC

with Sierra Wireless AirCard 555 PCS/Cellular CDMA Modem Card

(co-located with Cisco MPI-350 Mini-PCI DSSS WLAN Card)

PCS CDMA Mode

Single Transmit - PCS CDMA only

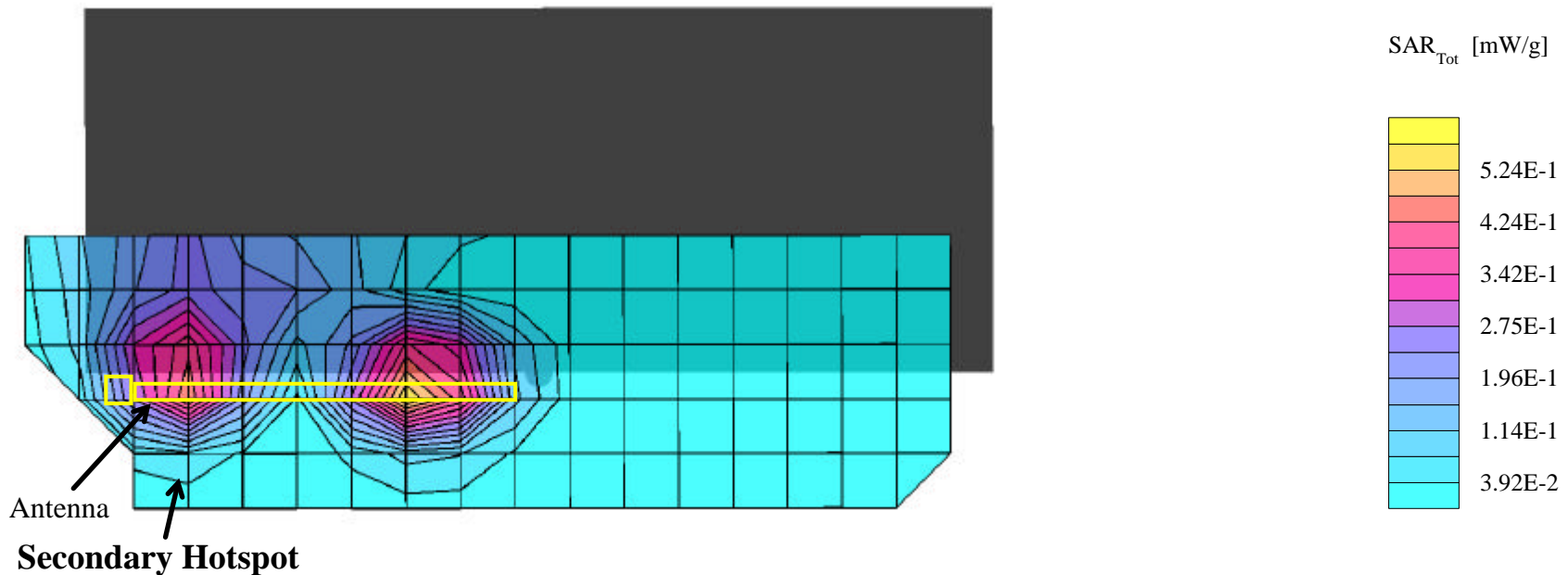
Channel 25 [1851.25 MHz]

Conducted Power: 23.0 dBm

Ambient Temp: 22.2°C; Fluid Temp: 21.4°C

Date Tested: October 31, 2002

Secondary Hotspot Evaluation



Itronix Corporation FCC ID: KBCIX260AC555-MPI

SAM Phantom; Flat Section; Position: (270°,0°)

Probe: ET3DV6 - SN1387; ConvF(5.00,5.00,5.00); Crest factor: 1.0

1900 MHz Muscle: $\sigma = 1.51$ mho/m $\epsilon_r = 53.3$ $\rho = 1.00$ g/cm³

Coarse: Dx = 15.0, Dy = 15.0, Dz = 10.0

Cube 5x5x7

SAR (1g): 0.517 mW/g, SAR (10g): 0.260 mW/g

Body SAR - Back of LCD Display (Closed) - Antenna Parallel to Planar Phantom (Stowed Position)

0.0 cm Separation Distance from Back of LCD Display to Planar Phantom

Itronix IX260 Rugged Laptop PC

with Sierra Wireless AirCard 555 PCS/Cellular CDMA Modem Card

(co-located with Cisco MPI-350 Mini-PCI DSSS WLAN Card)

PCS CDMA Mode

Single Transmit - PCS CDMA only

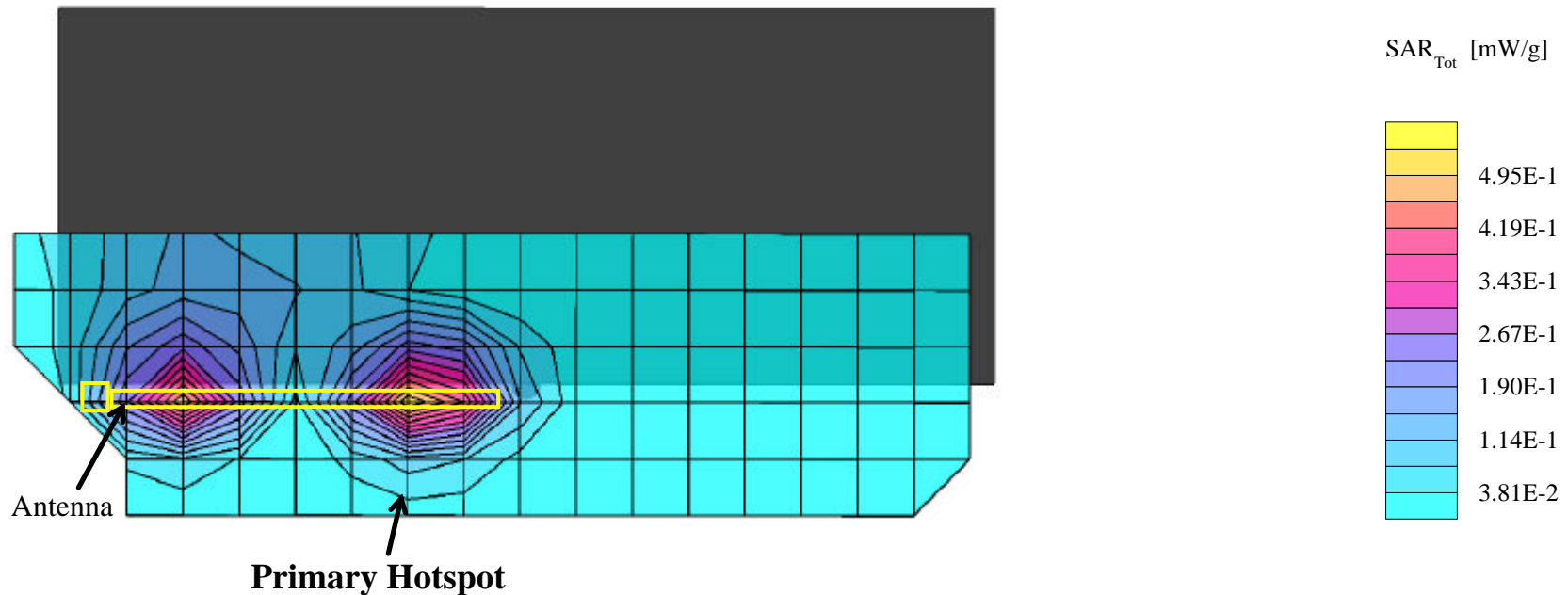
Channel 1175 [1908.75 MHz]

Conducted Power: 23.0 dBm

Ambient Temp: 22.2°C; Fluid Temp: 21.4°C

Date Tested: October 31, 2002

Primary Hotspot Evaluation



Itronix Corporation FCC ID: KBCIX260AC555-MPI

SAM Phantom; Flat Section; Position: (270°,0°)

Probe: ET3DV6 - SN1387; ConvF(5.00,5.00,5.00); Crest factor: 1.0

1900 MHz Muscle: $\sigma = 1.51$ mho/m $\epsilon_r = 53.3$ $\rho = 1.00$ g/cm³

Coarse: Dx = 15.0, Dy = 15.0, Dz = 10.0

Cube 5x5x7

SAR (1g): 0.255 mW/g, SAR (10g): 0.123 mW/g

Body SAR - Back of LCD Display (Closed) - Antenna Parallel to Planar Phantom (Stowed Position)

0.0 cm Separation Distance from Back of LCD Display to Planar Phantom

Itronix IX260 Rugged Laptop PC

with Sierra Wireless AirCard 555 PCS/Cellular CDMA Modem Card

(co-located with Cisco MPI-350 Mini-PCI DSSS WLAN Card)

PCS CDMA Mode

Single Transmit - PCS CDMA only

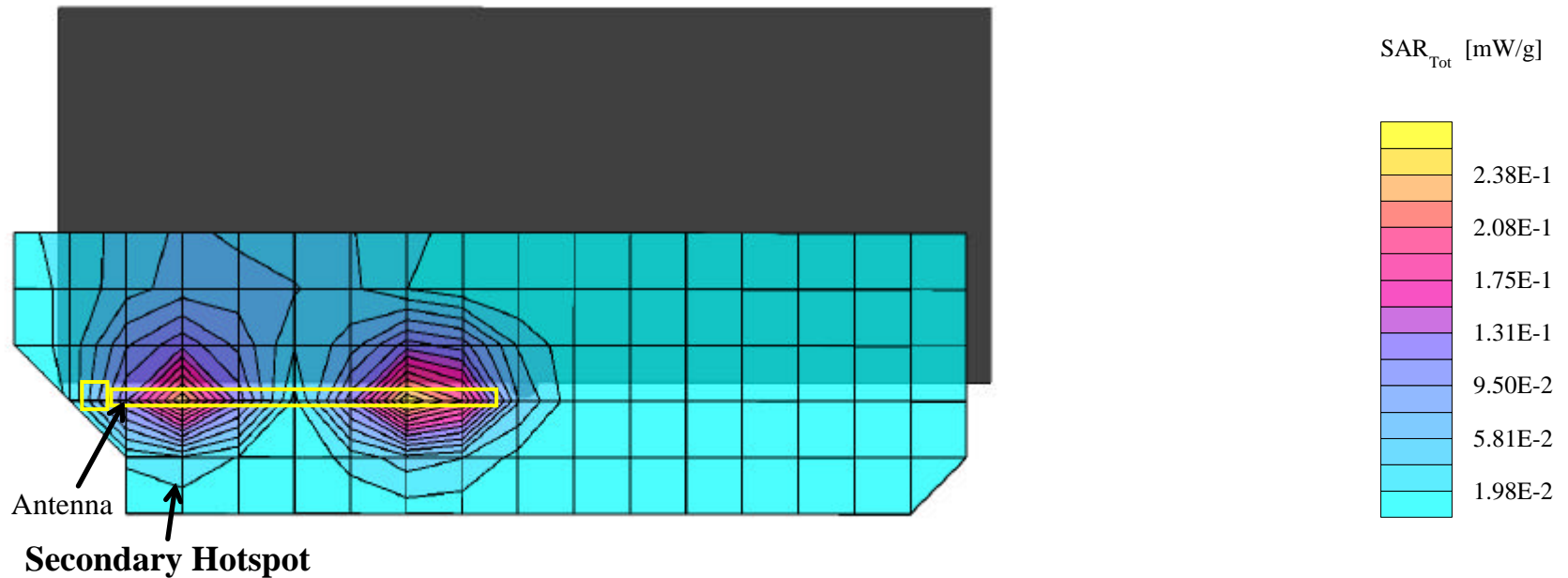
Channel 1175 [1908.75 MHz]

Conducted Power: 23.0 dBm

Ambient Temp: 22.2°C; Fluid Temp: 21.4°C

Date Tested: October 31, 2002

Secondary Hotspot Evaluation



Itronix Corporation FCC ID: KBCIX260AC555-MPI

SAM Phantom; Flat Section; Position: (270°,0°)

Probe: ET3DV6 - SN1387; ConvF(5.00,5.00,5.00); Crest factor: 1.0

1900 MHz Muscle: $\sigma = 1.51$ mho/m $\epsilon_r = 53.3$ $\rho = 1.00$ g/cm³

Coarse: Dx = 15.0, Dy = 15.0, Dz = 10.0

Cube 5x5x7

SAR (1g): 0.0712 mW/g, SAR (10g): 0.0430 mW/g

Body SAR - Back of LCD Display (Closed) - Antenna Perpendicular to Planar Phantom (180°)

0.0 cm Separation Distance from Back of LCD Display to Planar Phantom

Itronix IX260 Rugged Laptop PC

with Sierra Wireless AirCard 555 PCS/Cellular CDMA Modem Card

(co-located with Cisco MPI-350 Mini-PCI DSSS WLAN Card)

PCS CDMA Mode

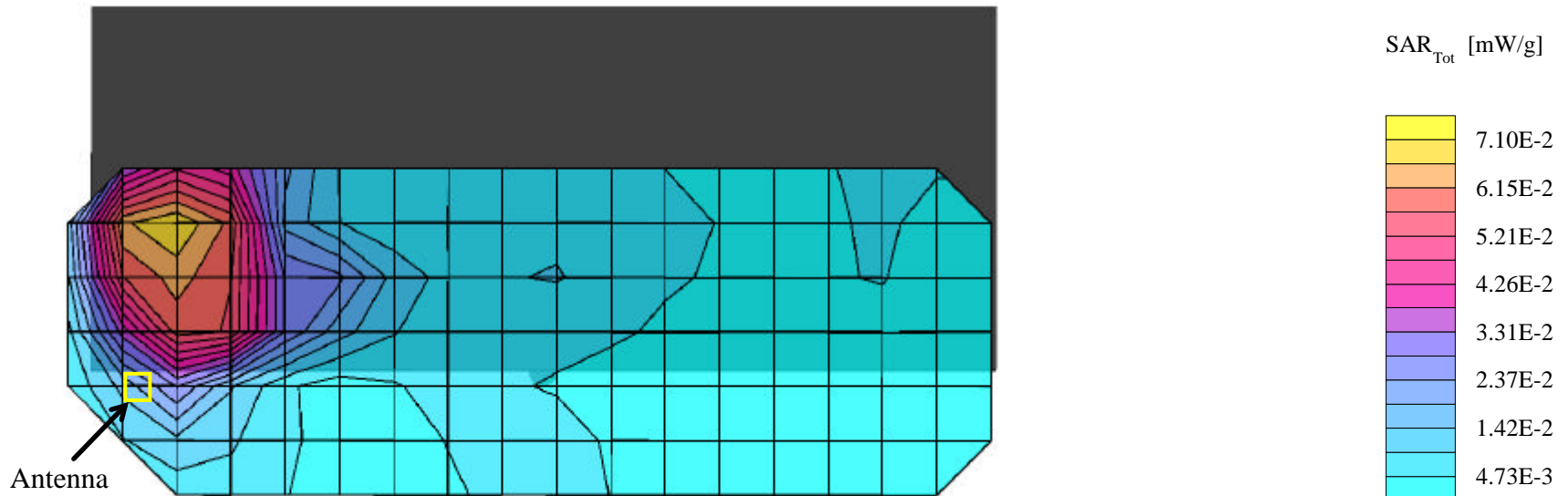
Single Transmit - PCS CDMA only

Channel 600 [1880.00 MHz]

Conducted Power: 23.0 dBm

Ambient Temp: 22.2°C; Fluid Temp: 21.4°C

Date Tested: October 31, 2002



Itronix Corporation FCC ID: KBCIX260AC555-MPI

SAM Phantom; Flat Section; Position: (270°, 0°)

Probe: ET3DV6 - SN1387; ConvF(5.00,5.00,5.00); Crest factor: 1.0

1900 MHz Muscle: $\sigma = 1.51$ mho/m $\epsilon_r = 53.3$ $\rho = 1.00$ g/cm³

Coarse: Dx = 15.0, Dy = 15.0, Dz = 10.0

Cube 5x5x7

SAR (1g): 0.0298 mW/g, SAR (10g): 0.0142 mW/g

Body SAR - Bottom of Laptop PC (LCD Display Closed) - Antenna Parallel to Planar Phantom (Stowed Position)

0.0 cm Separation Distance from Bottom of Laptop PC to Planar Phantom

Itronix IX260 Rugged Laptop PC

with Sierra Wireless AirCard 555 PCS/Cellular CDMA Modem Card

(co-located with Cisco MPI-350 Mini-PCI DSSS WLAN Card)

PCS CDMA Mode

Single Transmit - PCS CDMA only

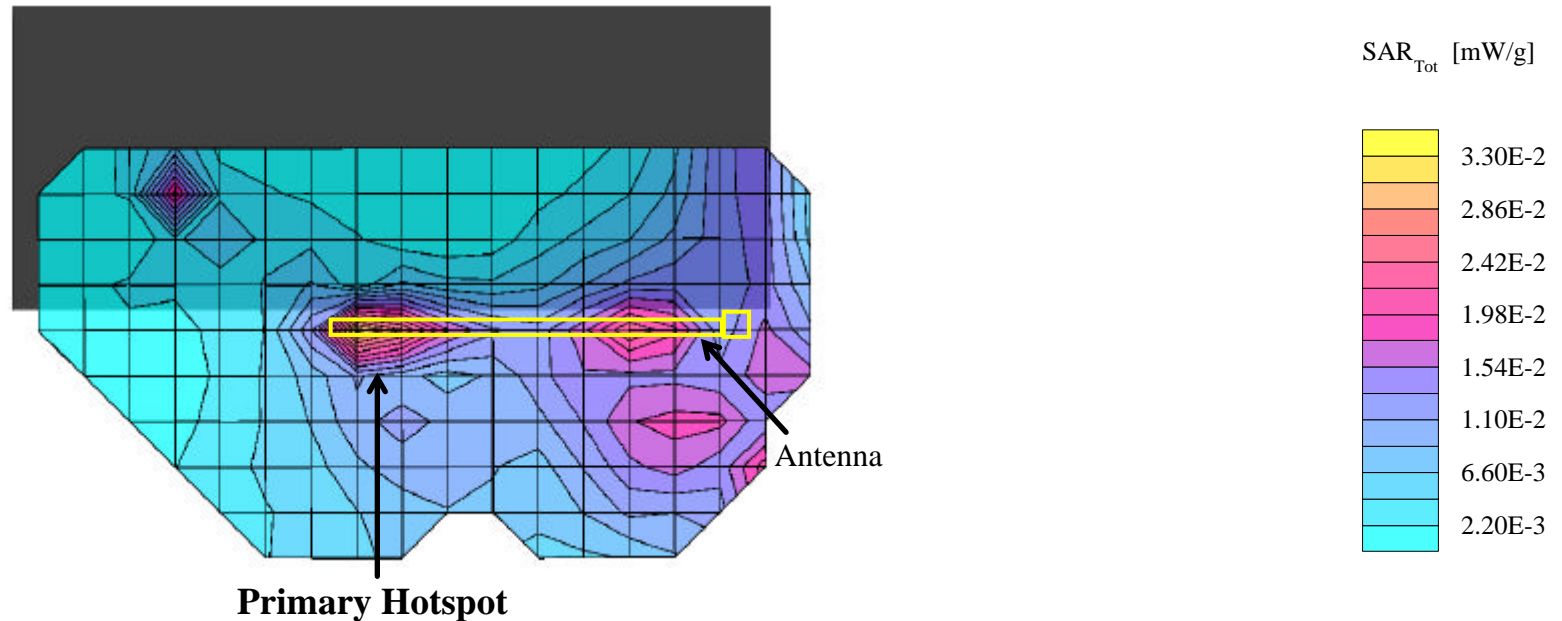
Channel 600 [1880.00 MHz]

Conducted Power: 23.0 dBm

Ambient Temp: 22.2°C; Fluid Temp: 21.4°C

Date Tested: October 31, 2002

Primary Hotspot Evaluation



Itronix Corporation FCC ID: KBCIX260AC555-MPI

SAM Phantom; Flat Section; Position: (270°,0°)

Probe: ET3DV6 - SN1387; ConvF(5.00,5.00,5.00); Crest factor: 1.0

1900 MHz Muscle: $\sigma = 1.51$ mho/m $\epsilon_r = 53.3$ $\rho = 1.00$ g/cm³

Coarse: Dx = 15.0, Dy = 15.0, Dz = 10.0

Cube 5x5x7

SAR (1g): 0.0152 mW/g, SAR (10g): 0.0072 mW/g

Body SAR - Bottom of Laptop PC (LCD Display Closed) - Antenna Parallel to Planar Phantom (Stowed Position)

0.0 cm Separation Distance from Bottom of Laptop PC to Planar Phantom

Itronix IX260 Rugged Laptop PC

with Sierra Wireless AirCard 555 PCS/Cellular CDMA Modem Card

(co-located with Cisco MPI-350 Mini-PCI DSSS WLAN Card)

PCS CDMA Mode

Single Transmit - PCS CDMA only

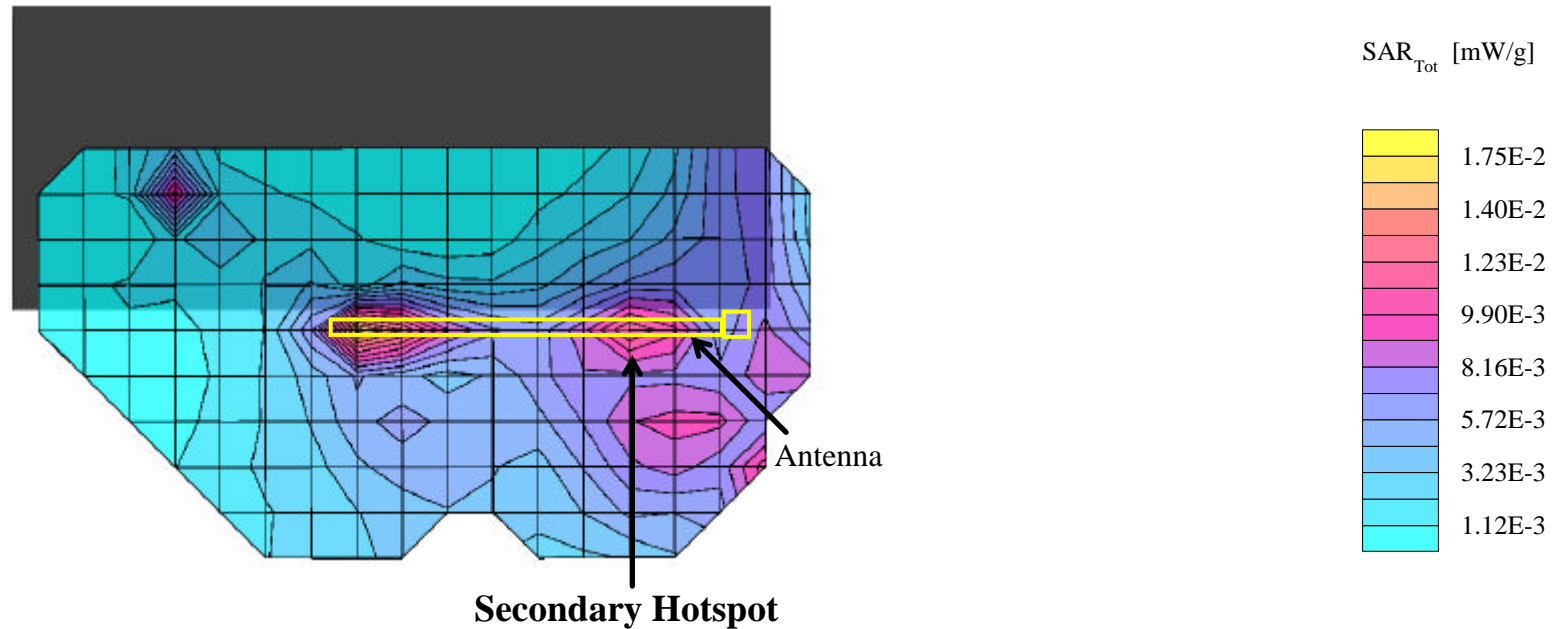
Channel 600 [1880.00 MHz]

Conducted Power: 23.0 dBm

Ambient Temp: 22.2°C; Fluid Temp: 21.4°C

Date Tested: October 31, 2002

Secondary Hotspot Evaluation



Itronix Corporation FCC ID: KBCIX260AC555-MPI

SAM Phantom; Flat Section; Position: (270°,0°)

Probe: ET3DV6 - SN1387; ConvF(5.00,5.00,5.00); Crest factor: 1.0

1900 MHz Muscle: $\sigma = 1.51$ mho/m $\epsilon_r = 53.3$ $\rho = 1.00$ g/cm³

Coarse: Dx = 15.0, Dy = 15.0, Dz = 10.0

Cube 5x5x7

SAR (1g): 0.0342 mW/g, SAR (10g): 0.0207 mW/g

Body SAR - Bottom of Laptop PC (LCD Display Closed) - Antenna Perpendicular to Planar Phantom (Extended Position)

0.0 cm Separation Distance from Bottom of Laptop PC to Planar Phantom

Itronix IX260 Rugged Laptop PC

with Sierra Wireless AirCard 555 PCS/Cellular CDMA Modem Card

(co-located with Cisco MPI-350 Mini-PCI DSSS WLAN Card)

PCS CDMA Mode

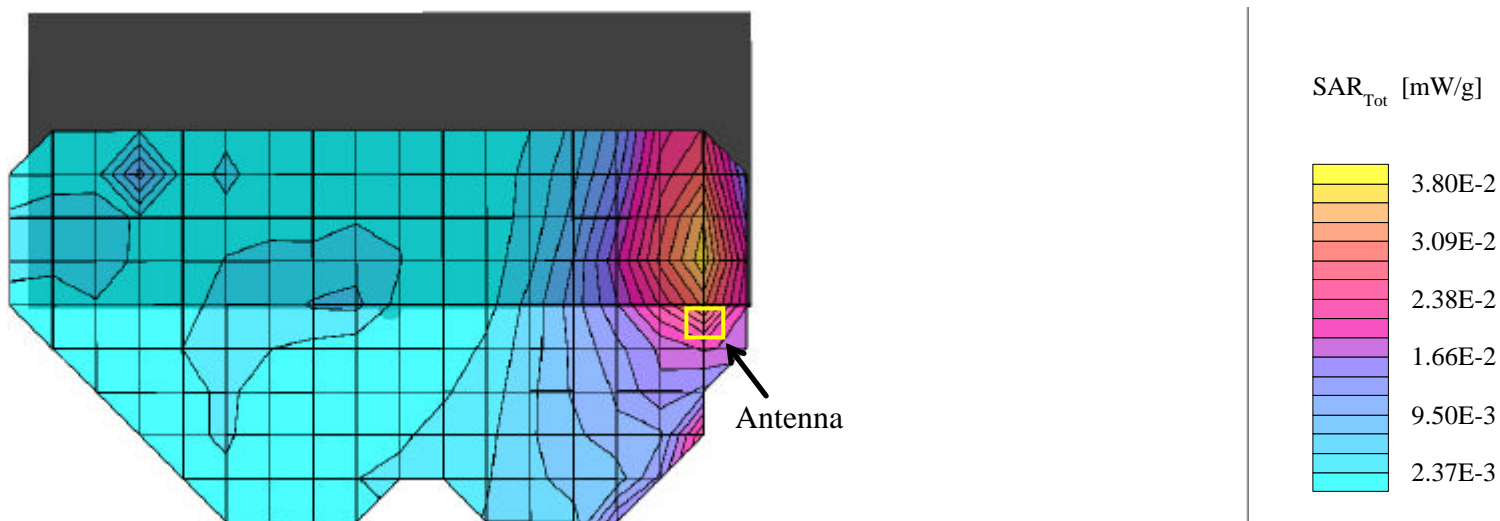
Single Transmit - PCS CDMA only

Channel 600 [1880.00 MHz]

Conducted Power: 23.0 dBm

Ambient Temp: 22.2°C; Fluid Temp: 21.4°C

Date Tested: October 31, 2002



Itronix Corporation FCC ID: KBCIX260AC555-MPI

SAM Phantom; Flat Section; Position: (0°,0°)

Probe: ET3DV6 - SN1387; ConvF(5.00,5.00,5.00); Crest factor: 1.0

1900 MHz Muscle: $\sigma = 1.51$ mho/m $\epsilon_r = 53.3$ $\rho = 1.00$ g/cm³

Coarse: Dx = 15.0, Dy = 15.0, Dz = 10.0

Body SAR - Bottom of Laptop PC (LCD Display Closed) - Antenna Perpendicular to Planar Phantom (Extended Position)

0.0 cm Separation Distance from Bottom of Laptop PC to Planar Phantom

Itronix IX260 Rugged Laptop PC

with Sierra Wireless AirCard 555 PCS/Cellular CDMA Modem Card

(co-located with Cisco MPI-350 Mini-PCI DSSS WLAN Card)

PCS CDMA Mode

Single Transmit - PCS CDMA only

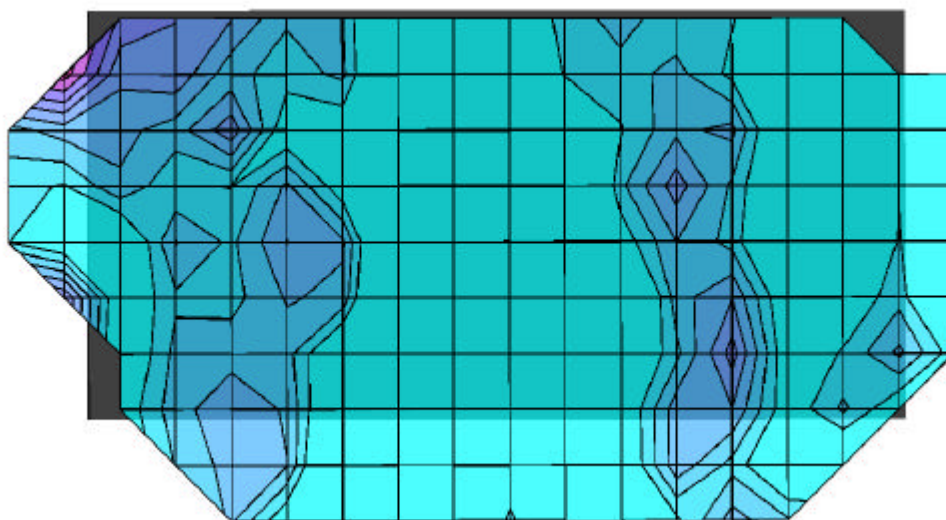
Channel 600 [1880.00 MHz]

Conducted Power: 23.0 dBm

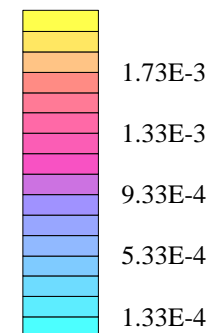
Ambient Temp: 22.2°C; Fluid Temp: 21.4°C

Date Tested: October 31, 2002

Coarse scan to show Left Half of Bottom Side



SAR_{Tot} [mW/g]



Itronix Corporation FCC ID: KBCIX260AC555-MPI

SAM Phantom; Flat Section; Position: (0°,0°)

Probe: ET3DV6 - SN1387; ConvF(5.00,5.00,5.00); Crest factor: 1.0

1900 MHz Muscle: $\sigma = 1.51$ mho/m $\epsilon_r = 53.3$ $\rho = 1.00$ g/cm³

Coarse: Dx = 15.0, Dy = 15.0, Dz = 10.0

Cube 5x5x7

SAR (1g): 0.212 mW/g, SAR (10g): 0.113 mW/g

Body SAR - Right Side of LCD Display (Closed) - Antenna Parallel to Planar Phantom (Stowed Position)

1.5 cm Separation Distance from Antenna to Planar Phantom

Itronix IX260 Rugged Laptop PC

with Sierra Wireless AirCard 555 PCS/Cellular CDMA Modem Card

(co-located with Cisco MPI-350 Mini-PCI DSSS WLAN Card)

PCS CDMA Mode

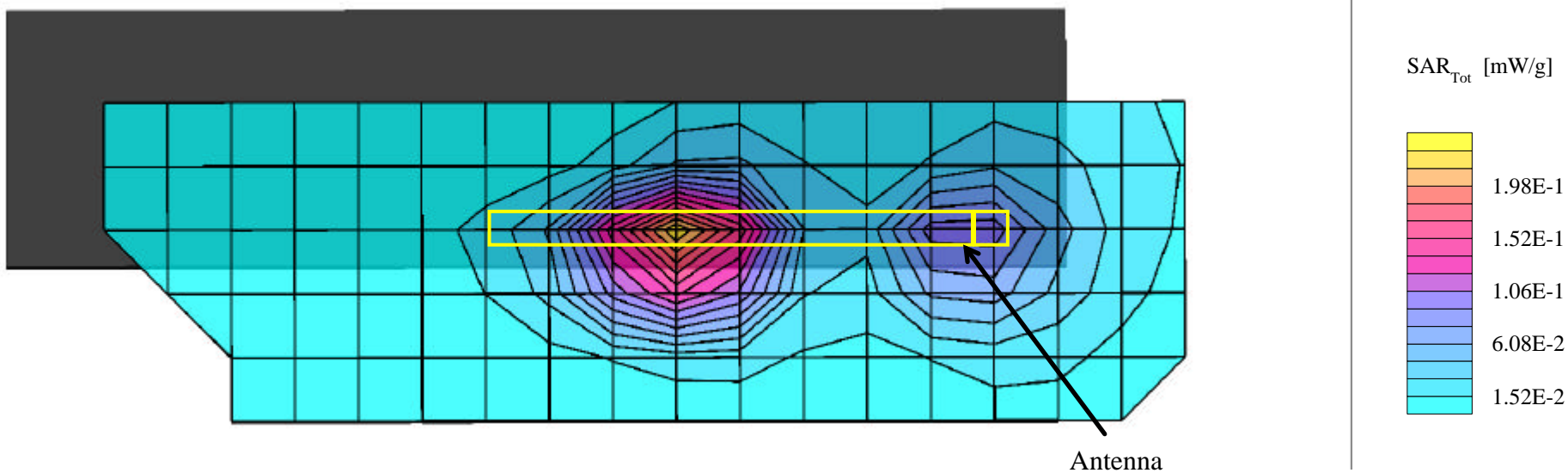
Single Transmit - PCS CDMA only

Channel 600 [1880.00 MHz]

Conducted Power: 23.0 dBm

Ambient Temp: 22.2°C; Fluid Temp: 21.4°C

Date Tested: October 31, 2002

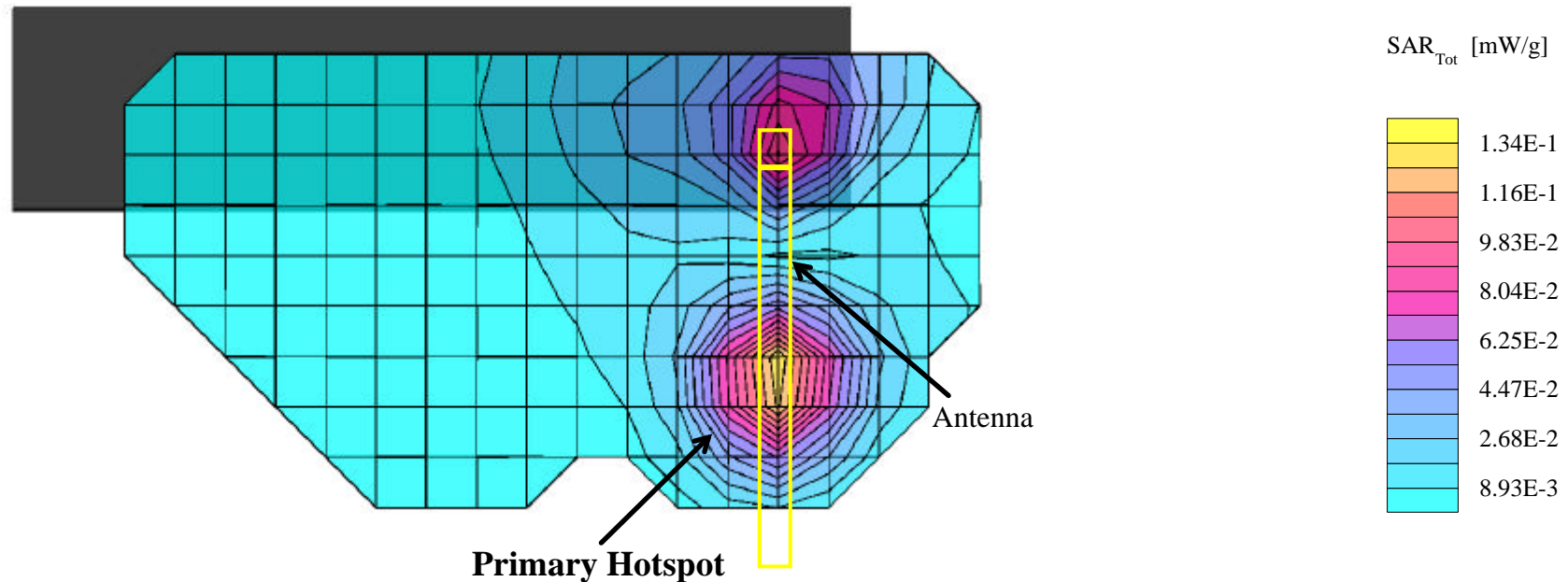


Itronix Corporation FCC ID: KBCIX260AC555-MPI

SAM Phantom; Flat Section; Position: (0°,0°)
 Probe: ET3DV6 - SN1387; ConvF(5.00,5.00,5.00); Crest factor: 1.0
 1900 MHz Muscle: $\sigma = 1.51$ mho/m $\epsilon_r = 53.3$ $\rho = 1.00$ g/cm³
 Coarse: Dx = 15.0, Dy = 15.0, Dz = 10.0
 Cube 5x5x7
 SAR (1g): 0.127 mW/g, SAR (10g): 0.0725 mW/g

Body SAR - Right Side of LCD Display (Closed) - Antenna Parallel to Planar Phantom (Extended Position)
 1.5 cm Separation Distance from Antenna to Planar Phantom
 Itronix IX260 Rugged Laptop PC
 with Sierra Wireless AirCard 555 PCS/Cellular CDMA Modem Card
 (co-located with Cisco MPI-350 Mini-PCI DSSS WLAN Card)
 PCS CDMA Mode
Single Transmit - PCS CDMA only
 Channel 600 [1880.00 MHz]
 Conducted Power: 23.0 dBm
 Ambient Temp: 22.2°C; Fluid Temp: 21.4°C
 Date Tested: October 31, 2002

Primary Hotspot Evaluation



Itronix Corporation FCC ID: KBCIX260AC555-MPI

SAM Phantom; Flat Section; Position: (0°,0°)
 Probe: ET3DV6 - SN1387; ConvF(5.00,5.00,5.00); Crest factor: 1.0
 1900 MHz Muscle: $\sigma = 1.51$ mho/m $\epsilon_r = 53.3$ $\rho = 1.00$ g/cm³
 Coarse: Dx = 15.0, Dy = 15.0, Dz = 10.0
 Cube 5x5x7
 SAR (1g): 0.0839 mW/g, SAR (10g): 0.0476 mW/g

Body SAR - Right Side of LCD Display (Closed) - Antenna Parallel to Planar Phantom (Extended Position)
 1.5 cm Separation Distance from Antenna to Planar Phantom
 Itronix IX260 Rugged Laptop PC
 with Sierra Wireless AirCard 555 PCS/Cellular CDMA Modem Card
 (co-located with Cisco MPI-350 Mini-PCI DSSS WLAN Card)
 PCS CDMA Mode
Single Transmit - PCS CDMA only
 Channel 600 [1880.00 MHz]
 Conducted Power: 23.0 dBm
 Ambient Temp: 22.2°C; Fluid Temp: 21.4°C
 Date Tested: October 31, 2002

Secondary Hotspot Evaluation

