

## APPENDIX A - SAR MEASUREMENT DATA

## Itronix Corporation FCC ID: KBCIX260AC555-MPI

SAM Phantom; Flat Section; Position: (270°,0°)

Probe: ET3DV6 - SN1387; ConvF(4.30,4.30,4.30); Crest factor: 1.0

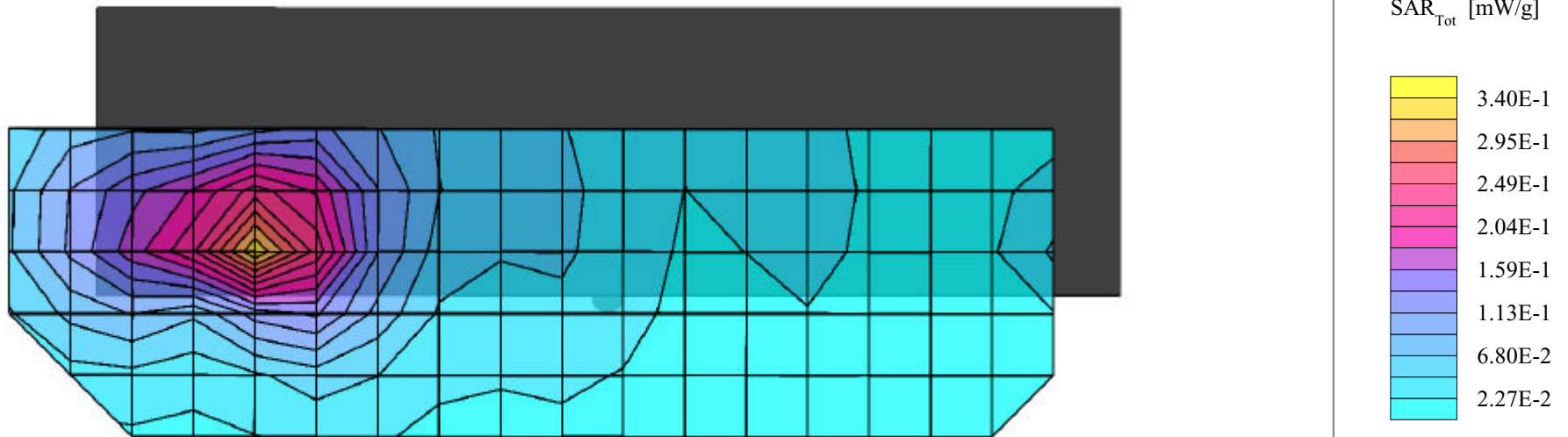
2450 MHz Muscle:  $\sigma = 2.01$  mho/m  $\epsilon_r = 47.7$   $\rho = 1.00$  g/cm<sup>3</sup>

Coarse: Dx = 15.0, Dy = 15.0, Dz = 10.0

Cube 5x5x7; Powerdrift: 0.12 dB

SAR (1g): 0.311 mW/g, SAR (10g): 0.161 mW/g

Body SAR - Back of Laptop PC LCD Display (Closed) - Left-Side Antenna  
1.5 cm Separation Distance from Back of LCD Display to Planar Phantom  
Itronix IX260 Rugged Laptop PC with Cisco MPI-350 Mini-PCI WLAN Card  
Co-located with Sierra Wireless AirCard 555/550 Dual-Band CDMA Modem  
CW Mode  
Mid Channel [2437 MHz]  
Peak Conducted Power: 21.1 dBm  
Ambient Temp: 23.3°C; Fluid Temp: 22.8°C  
Date Tested: December 10, 2002



## Itronix Corporation FCC ID: KBCIX260AC555-MPI

SAM Phantom; Flat Section; Position: (270°,0°)

Probe: ET3DV6 - SN1387; ConvF(4.30,4.30,4.30); Crest factor: 1.0

2450 MHz Muscle:  $\sigma = 2.01$  mho/m  $\epsilon_r = 47.7$   $\rho = 1.00$  g/cm<sup>3</sup>

Coarse: Dx = 15.0, Dy = 15.0, Dz = 10.0

Cube 5x5x7; Powerdrift: -0.20 dB

SAR (1g): 0.397 mW/g, SAR (10g): 0.200 mW/g

Body SAR - Back of Laptop PC LCD Display (Closed) - Right-Side Antenna

1.5 cm Separation Distance from Back of LCD Display to Planar Phantom

Itronix IX260 Rugged Laptop PC with Cisco MPI-350 Mini-PCI WLAN Card

Co-located with Sierra Wireless AirCard 555/550 Dual-Band CDMA Modem

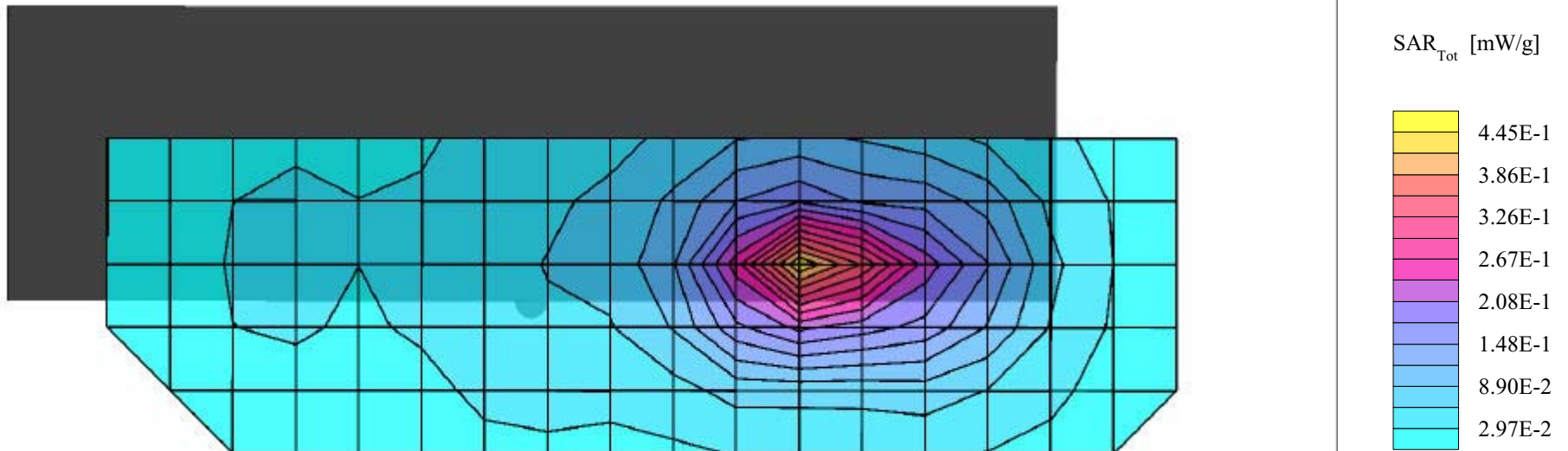
CW Mode

Mid Channel [2437 MHz]

Peak Conducted Power: 21.1 dBm

Ambient Temp: 23.3°C; Fluid Temp: 22.8°C

Date Tested: December 10, 2002



## Itronix Corporation FCC ID: KBCIX260AC555-MPI

SAM Phantom; Planar Section

Probe: ET3DV6 - SN1387; ConvF(4.30,4.30,4.30); Crest factor: 1.0

2450 MHz Muscle:  $\sigma = 2.01$  mho/m  $\epsilon_r = 47.7$   $\rho = 1.00$  g/cm<sup>3</sup>

## Z-Axis Extrapolation at Peak SAR Location

Body SAR - Back of Laptop PC LCD Display (Closed) - Right-Side Antenna

1.5 cm Separation Distance from Back of LCD Display to Planar Phantom

Itronix IX260 Rugged Laptop PC with Cisco MPI-350 Mini-PCI WLAN Card

Co-located with Sierra Wireless AirCard 555/550 Dual-Band CDMA Modem

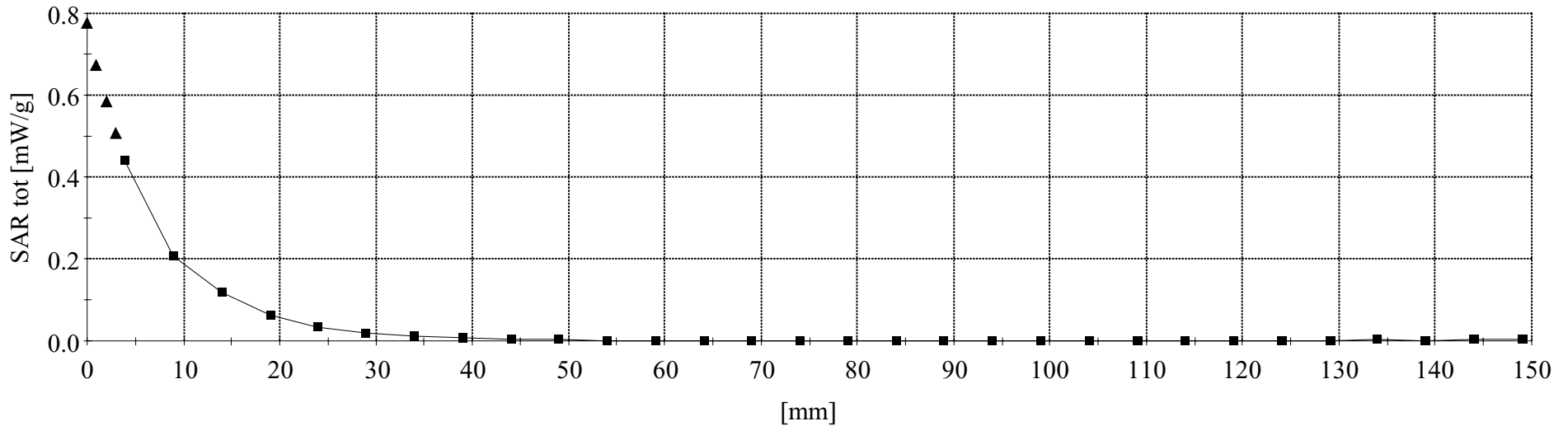
CW Mode

Mid Channel [2437 MHz]

Peak Conducted Power: 21.1 dBm

Ambient Temp: 23.3°C; Fluid Temp: 22.8°C

Date Tested: December 10, 2002



# Itronix Corporation FCC ID: KBCIX260AC555-MPI

SAM Phantom; Flat Section; Position: (270°,0°)

Probe: ET3DV6 - SN1387; ConvF(4.30,4.30,4.30); Crest factor: 1.0

2450 MHz Muscle:  $\sigma = 2.01$  mho/m  $\epsilon_r = 47.7$   $\rho = 1.00$  g/cm<sup>3</sup>

Coarse: Dx = 20.0, Dy = 20.0, Dz = 10.0

Cube 5x5x7; Powerdrift: -0.13 dB

SAR (1g): 0.0128 mW/g, SAR (10g): 0.0074 mW/g

Body SAR - Bottom of Laptop PC (LCD Display Closed) - Left-Side Antenna

0.0 cm Separation Distance from Bottom of Laptop PC to Planar Phantom

Itronix IX260 Rugged Laptop PC with Cisco MPI-350 Mini-PCI WLAN Card

Co-located with Sierra Wireless AirCard 555/550 Dual-Band CDMA Modem

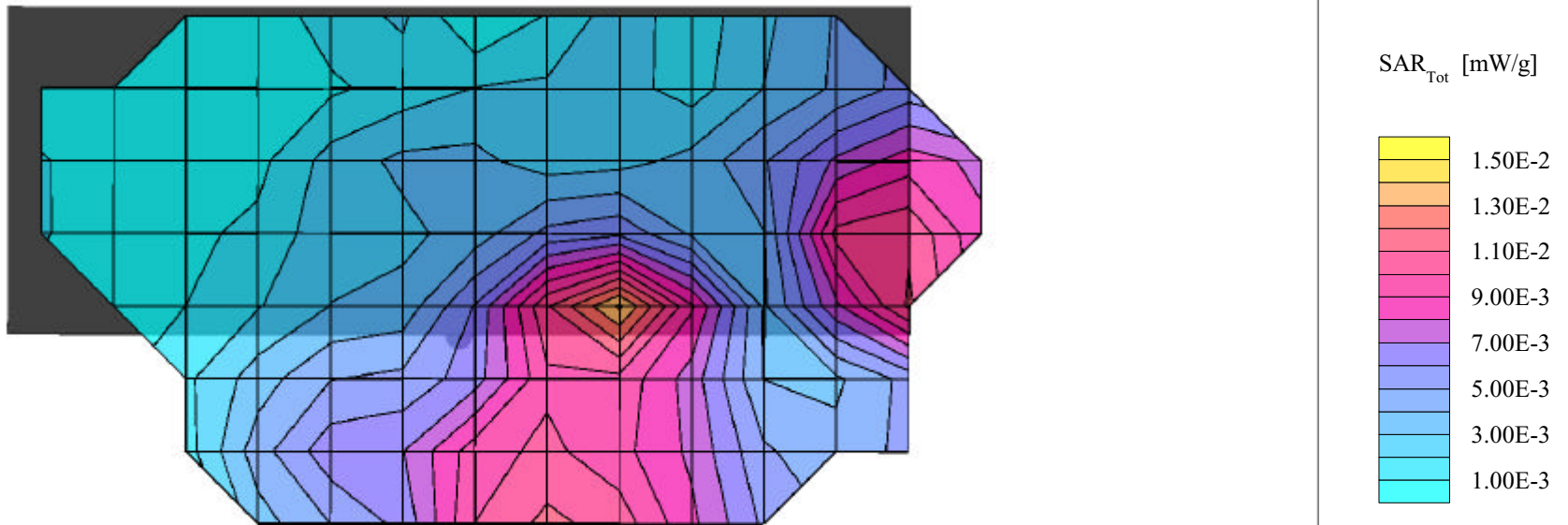
CW Mode

Mid Channel [2437 MHz]

Peak Conducted Power: 21.1 dBm

Ambient Temp: 23.3°C; Fluid Temp: 22.8°C

Date Tested: December 10, 2002



# Itronix Corporation FCC ID: KBCIX260AC555-MPI

SAM Phantom; Flat Section; Position: (270°,0°)

Probe: ET3DV6 - SN1387; ConvF(4.30,4.30,4.30); Crest factor: 1.0

2450 MHz Muscle:  $\sigma = 2.01$  mho/m  $\epsilon_r = 47.7$   $\rho = 1.00$  g/cm<sup>3</sup>

Coarse: Dx = 15.0, Dy = 15.0, Dz = 10.0

Cube 5x5x7; Powerdrift: -0.16 dB

SAR (1g): 0.0201 mW/g, SAR (10g): 0.0114 mW/g

Body SAR - Bottom of Laptop PC (LCD Display Closed) - Right-Side Antenna

0.0 cm Separation Distance from Bottom of Laptop PC to Planar Phantom

Itronix IX260 Rugged Laptop PC with Cisco MPI-350 Mini-PCI WLAN Card

Co-located with Sierra Wireless AirCard 555/550 Dual-Band CDMA Modem

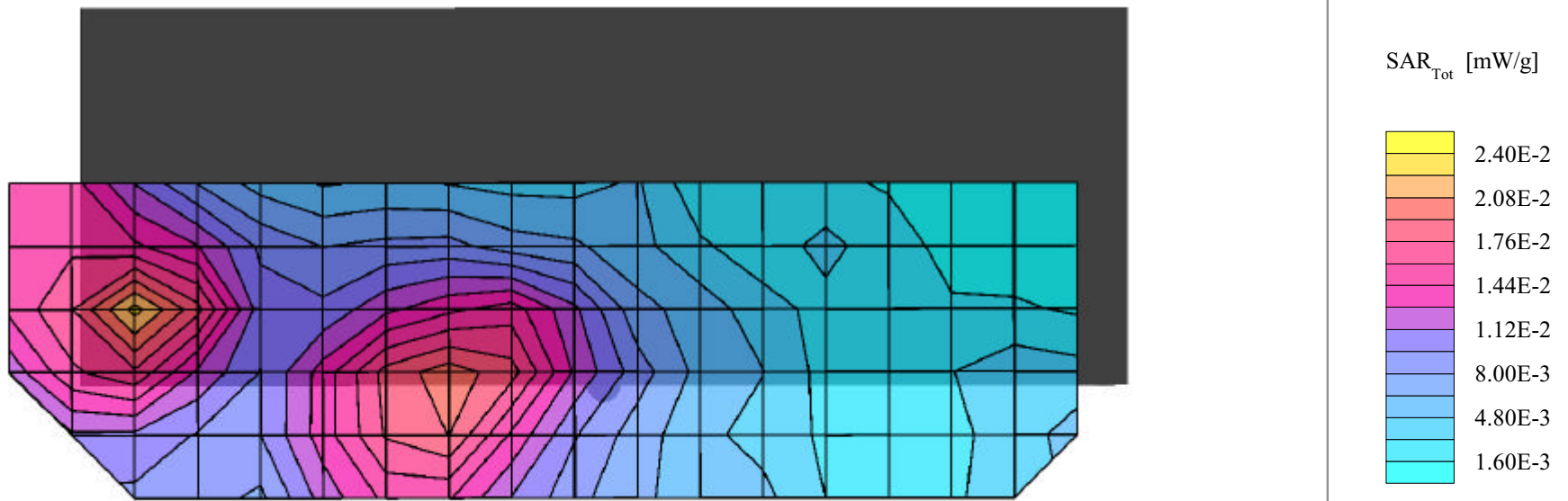
CW Mode

Mid Channel [2437 MHz]

Peak Conducted Power: 21.1 dBm

Ambient Temp: 23.3°C; Fluid Temp: 22.8°C

Date Tested: December 10, 2002



# Itronix Corporation FCC ID: KBCIX260AC555-MPI

SAM Phantom; Flat Section; Position: (270°,0°)

Probe: ET3DV6 - SN1387; ConvF(4.30,4.30,4.30); Crest factor: 1.0

2450 MHz Muscle:  $\sigma = 2.01$  mho/m  $\epsilon_r = 47.7$   $\rho = 1.00$  g/cm<sup>3</sup>

Coarse: Dx = 15.0, Dy = 15.0, Dz = 10.0

Cube 5x5x7; Powerdrift: -0.06 dB

SAR (1g): 0.0558 mW/g, SAR (10g): 0.0328 mW/g

Body SAR - Left Side of Laptop PC LCD Display (Open) - Left-Side Antenna

0.0 cm Separation Distance from Laptop PC to Planar Phantom

Itronix IX260 Rugged Laptop PC with Cisco MPI-350 Mini-PCI DSSS WLAN Card

Co-located with Sierra Wireless AirCard 555/550 Dual-Band CDMA Modem

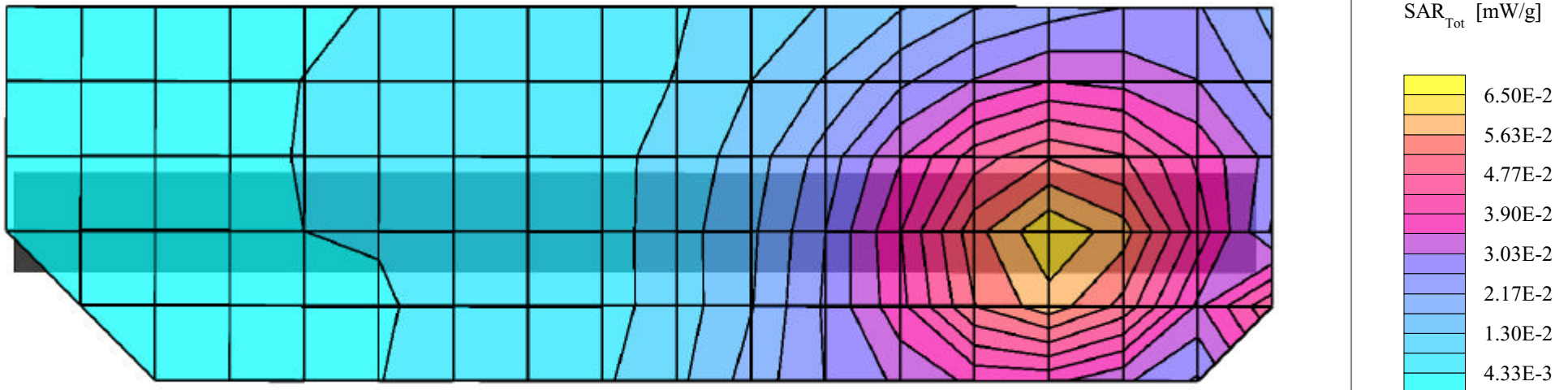
CW Mode

Mid Channel [2437 MHz]

Peak Conducted Power: 21.1 dBm

Ambient Temp: 23.3°C; Fluid Temp: 22.8°C

Date Tested: December 10, 2002



# Itronix Corporation FCC ID: KBCIX260AC555-MPI

SAM Phantom; Flat Section; Position: (270°,0°)

Probe: ET3DV6 - SN1387; ConvF(4.30,4.30,4.30); Crest factor: 1.0

2450 MHz Muscle:  $\sigma = 2.01$  mho/m  $\epsilon_r = 47.7$   $\rho = 1.00$  g/cm<sup>3</sup>

Coarse: Dx = 15.0, Dy = 15.0, Dz = 10.0

Cube 5x5x7; Powerdrift: -0.11 dB

SAR (1g): 0.0713 mW/g, SAR (10g): 0.0371 mW/g

Body SAR - Right Side of Laptop PC LCD Display (Open) - Right-Side Antenna

0.0 cm Separation Distance from Laptop PC to Planar Phantom

Itronix IX260 Rugged Laptop PC with Cisco MPI-350 Mini-PCI DSSS WLAN Card

Co-located with Sierra Wireless AirCard 555/550 Dual-Band CDMA Modem

CW Mode

Mid Channel [2437 MHz]

Peak Conducted Power: 21.1 dBm

Ambient Temp: 23.3°C; Fluid Temp: 22.8°C

Date Tested: December 10, 2002

