

Itronix Corporation FCC ID: KBCIX260AC555-MPI

SAM Phantom; Flat Section; Position: (270°,0°)

Probe: ET3DV6 - SN1387; ConvF(6.30,6.30,6.30); Crest factor: 1.0

835 MHz Muscle: $\sigma = 0.96$ mho/m $\epsilon_r = 53.3$ $\rho = 1.00$ g/cm³

Coarse: Dx = 15.0, Dy = 15.0, Dz = 10.0

Cube 5x5x7; Powerdrift: -0.03 dB

SAR (1g): 0.493 mW/g, SAR (10g): 0.294 mW/g

Body SAR - Back of LCD Display (Closed) - Antenna Parallel to Planar Phantom (Stowed Position)

0.0 cm Separation Distance from Back of LCD Display to Planar Phantom

Itronix IX260 Rugged Laptop PC

with Sierra Wireless AirCard 555 PCS/Cellular CDMA Modem Card

Co-located with Cisco MPI-350 Mini-PCI DSSS WLAN Card

Cellular CDMA Mode

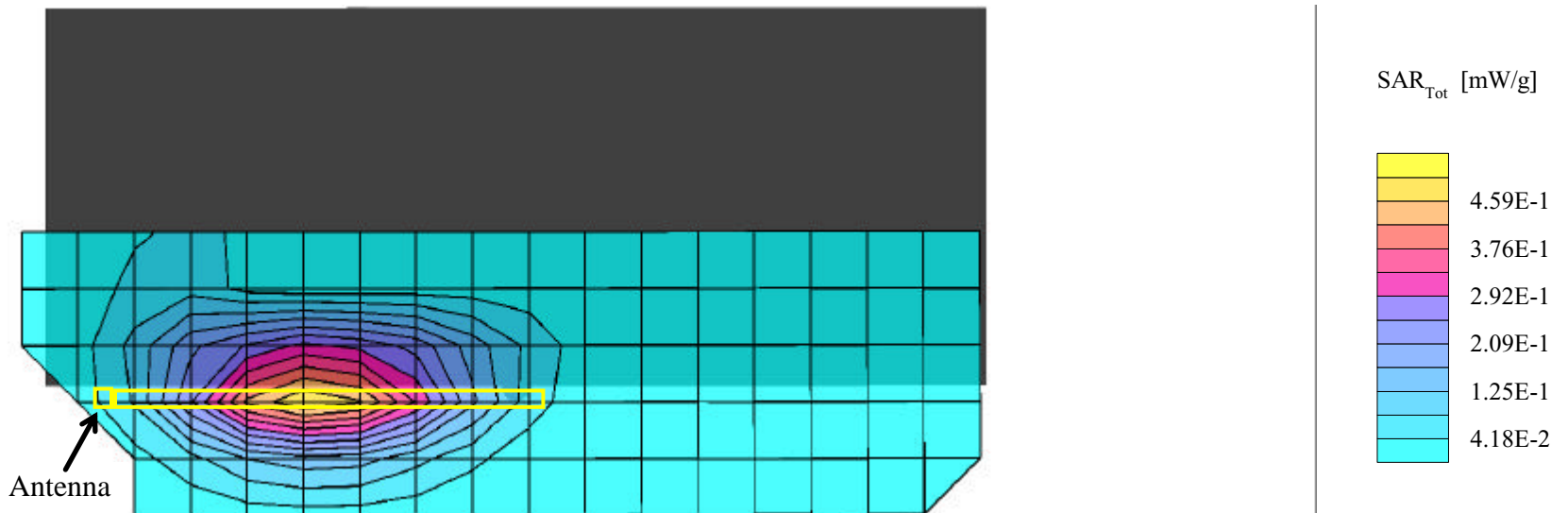
Single Transmit - Cellular CDMA only

Channel 363 [835.89 MHz]

Conducted Power: 23.0 dBm

Ambient Temp: 22.2°C; Fluid Temp: 22.0°C

Date Tested: November 01, 2002

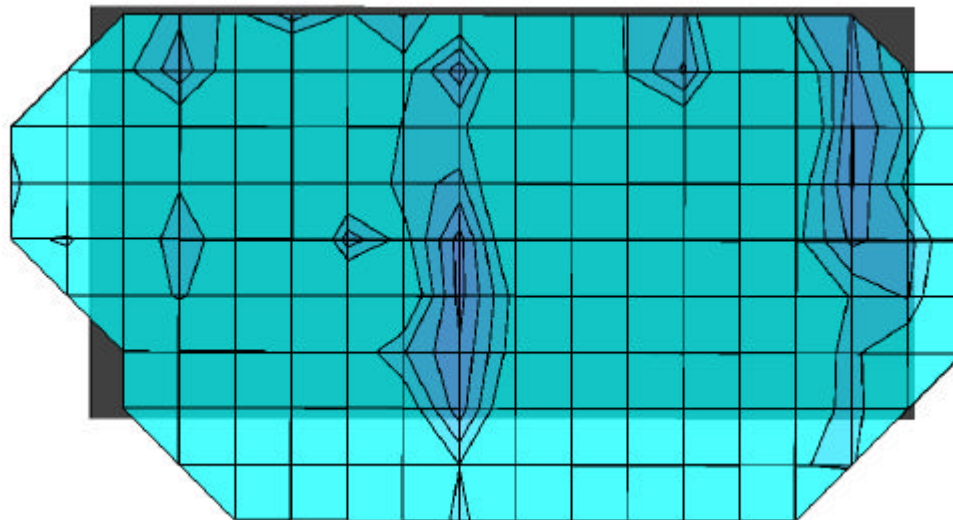


Itronix Corporation FCC ID: KBCIX260AC555-MPI

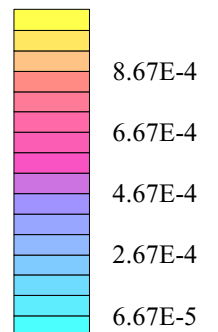
SAM Phantom; Flat Section; Position: (0°,0°)
Probe: ET3DV6 - SN1387; ConvF(6.30,6.30,6.30); Crest factor: 1.0
835 MHz Muscle: $\sigma = 0.96$ mho/m $\epsilon_r = 53.3$ $\rho = 1.00$ g/cm³
Coarse: Dx = 15.0, Dy = 15.0, Dz = 10.0

Body SAR - Back of LCD Display (Closed) - Antenna Parallel to Planar Phantom (Stowed Position)
0.0 cm Separation Distance from Back of LCD Display to Planar Phantom
Itronix IX260 Rugged Laptop PC
with Sierra Wireless AirCard 555 PCS/Cellular CDMA Modem Card
Co-located with Cisco MPI-350 Mini-PCI DSSS WLAN Card
Cellular CDMA Mode
Single Transmit - Cellular CDMA only
Channel 363 [835.89 MHz]
Conducted Power: 23.0 dBm
Ambient Temp: 22.2°C; Fluid Temp: 22.0°C
Date Tested: November 01, 2002

Coarse scan to show Left Half of LCD Display (Back Side)



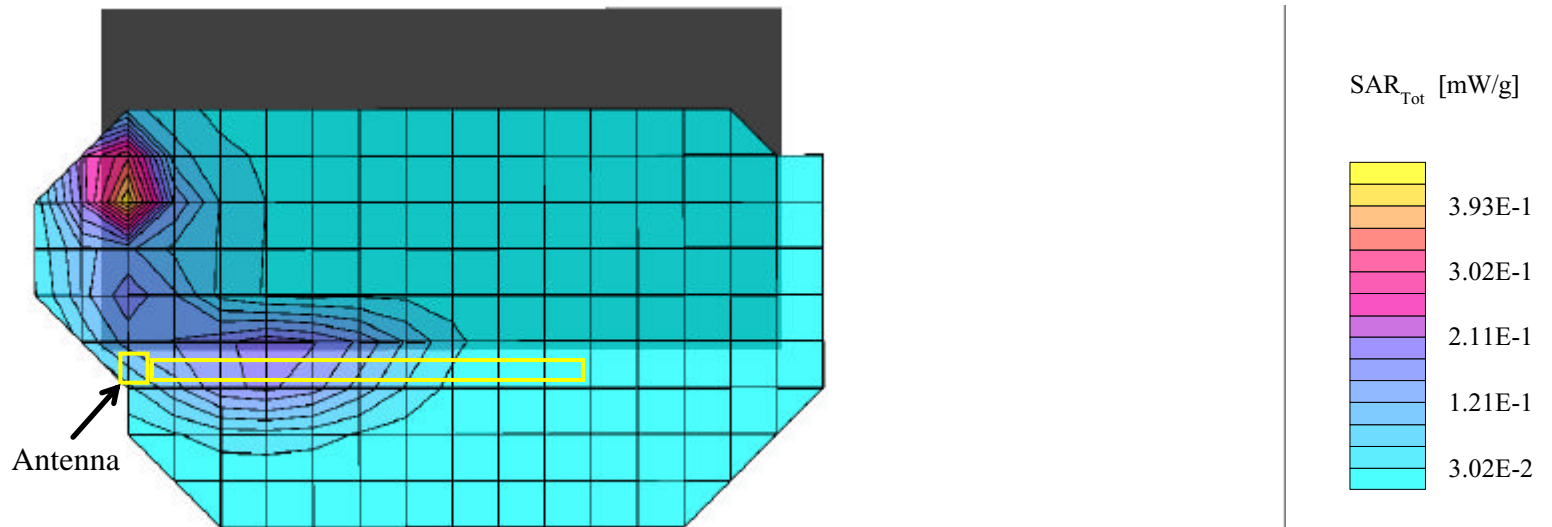
SAR_{Tot} [mW/g]



Itronix Corporation FCC ID: KBCIX260AC555-MPI

SAM Phantom; Flat Section; Position: (0°,0°)
 Probe: ET3DV6 - SN1387; ConvF(6.30,6.30,6.30); Crest factor: 1.0
 835 MHz Muscle: $\sigma = 0.96$ mho/m $\epsilon_r = 53.3$ $\rho = 1.00$ g/cm³
 Coarse: Dx = 15.0, Dy = 15.0, Dz = 10.0
 Cube 5x5x7; Powerdrift: -0.10 dB
 SAR (1g): 0.522 mW/g, SAR (10g): 0.192 mW/g

Body SAR - Back of LCD Display (Closed) - Antenna Parallel to Planar Phantom (Stowed Position)
 0.0 cm Separation Distance from Back of LCD Display to Planar Phantom
 Itronix IX260 Rugged Laptop PC
 with Sierra Wireless AirCard 555 PCS/Cellular CDMA Modem Card
 Co-located with Cisco MPI-350 Mini-PCI DSSS WLAN Card
 Cellular CDMA Mode
Simultaneous Transmit with co-located DSSS WLAN Card
 Channel 363 [835.89 MHz]
 Conducted Power: 23.0 dBm
 Ambient Temp: 22.2°C; Fluid Temp: 22.0°C
 Date Tested: November 01, 2002

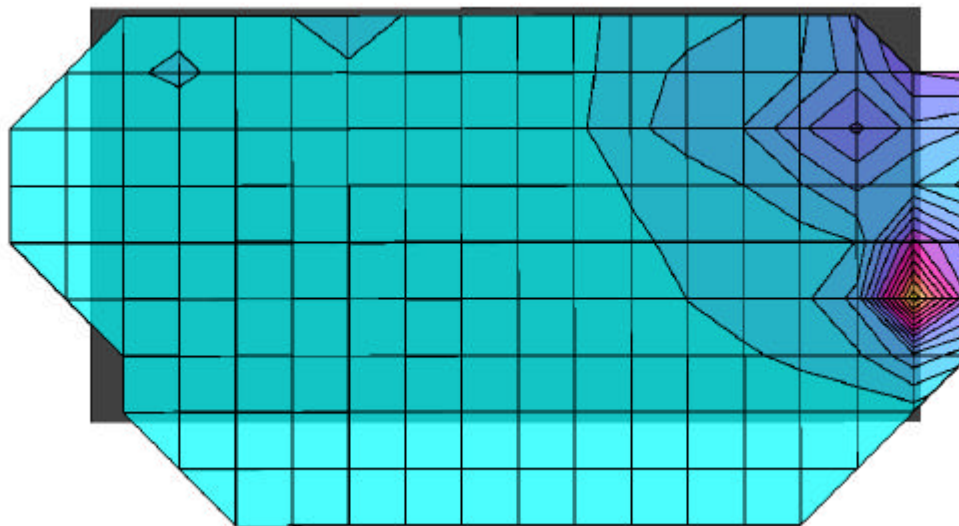


Itronix Corporation FCC ID: KBCIX260AC555-MPI

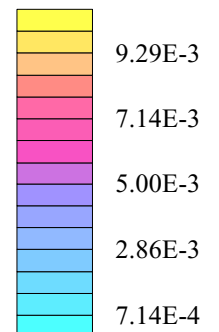
SAM Phantom; Flat Section; Position: (0°,0°)
 Probe: ET3DV6 - SN1387; ConvF(6.30,6.30,6.30); Crest factor: 1.0
 835 MHz Muscle: $\sigma = 0.96$ mho/m $\epsilon_r = 53.3$ $\rho = 1.00$ g/cm³
 Coarse: Dx = 15.0, Dy = 15.0, Dz = 10.0

Body SAR - Back of LCD Display (Closed) - Antenna Parallel to Planar Phantom (Stowed Position)
 0.0 cm Separation Distance from Back of LCD Display to Planar Phantom
 Itronix IX260 Rugged Laptop PC
 with Sierra Wireless AirCard 555 PCS/Cellular CDMA Modem Card
 Co-located with Cisco MPI-350 Mini-PCI DSSS WLAN Card
 Cellular CDMA Mode
Simultaneous Transmit with co-located DSSS WLAN Card
 Channel 363 [835.89 MHz]
 Conducted Power: 23.0 dBm
 Ambient Temp: 22.2°C; Fluid Temp: 22.0°C
 Date Tested: November 01, 2002

Coarse scan to show Left Half of LCD Display (Back Side)



SAR_{Tot} [mW/g]



Itronix Corporation FCC ID: KBCIX260AC555-MPI

SAM Phantom; Flat Section

Probe: ET3DV6 - SN1387; ConvF(6.30,6.30,6.30); Crest factor: 1.0

835 MHz Muscle: $\sigma = 0.96$ mho/m $\epsilon_r = 53.3$ $\rho = 1.00$ g/cm³

Z-Axis Extrapolation at Peak SAR Location

Body SAR - Back of LCD Display (Closed) - Antenna Parallel to Planar Phantom (Stowed Position)

0.0 cm Separation Distance from Back of LCD Display to Planar Phantom

Itronix IX260 Rugged Laptop PC

with Sierra Wireless AirCard 555 PCS/Cellular CDMA Modem Card

Co-located with Cisco MPI-350 Mini-PCI DSSS WLAN Card

Cellular CDMA Mode

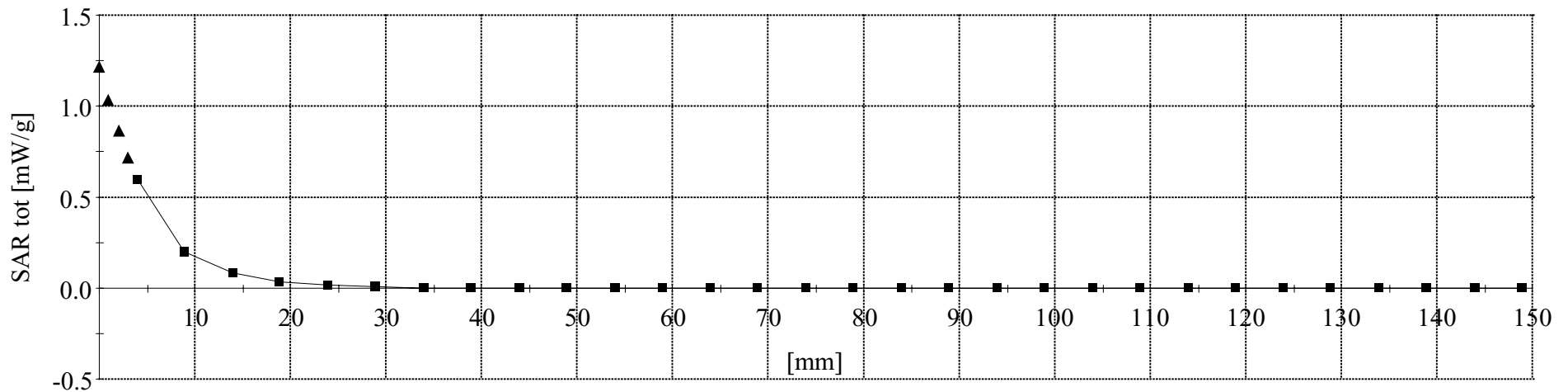
Simultaneous Transmit with co-located DSSS WLAN Card

Channel 363 [835.89 MHz]

Conducted Power: 23.0 dBm

Ambient Temp: 22.2°C; Fluid Temp: 22.0°C

Date Tested: November 01, 2002



Itronix Corporation FCC ID: KBCIX260AC555-MPI

SAM Phantom; Flat Section; Position: (270°,0°)

Probe: ET3DV6 - SN1387; ConvF(6.30,6.30,6.30); Crest factor: 1.0

835 MHz Muscle: $\sigma = 0.96$ mho/m $\epsilon_r = 53.3$ $\rho = 1.00$ g/cm³

Coarse: Dx = 15.0, Dy = 15.0, Dz = 10.0

Cube 5x5x7; Powerdrift: -0.17 dB

SAR (1g): 0.0175 mW/g, SAR (10g): 0.0113 mW/g

Body SAR - Bottom of Laptop PC (LCD Display Closed) - Antenna Perpendicular to Planar Phantom (Extended Position)

0.0 cm Separation Distance from Bottom of Laptop PC to Planar Phantom

Itronix IX260 Rugged Laptop PC

with Sierra Wireless AirCard 555 PCS/Cellular CDMA Modem Card

Co-located with Cisco MPI-350 Mini-PCI DSSS WLAN Card

Cellular CDMA Mode

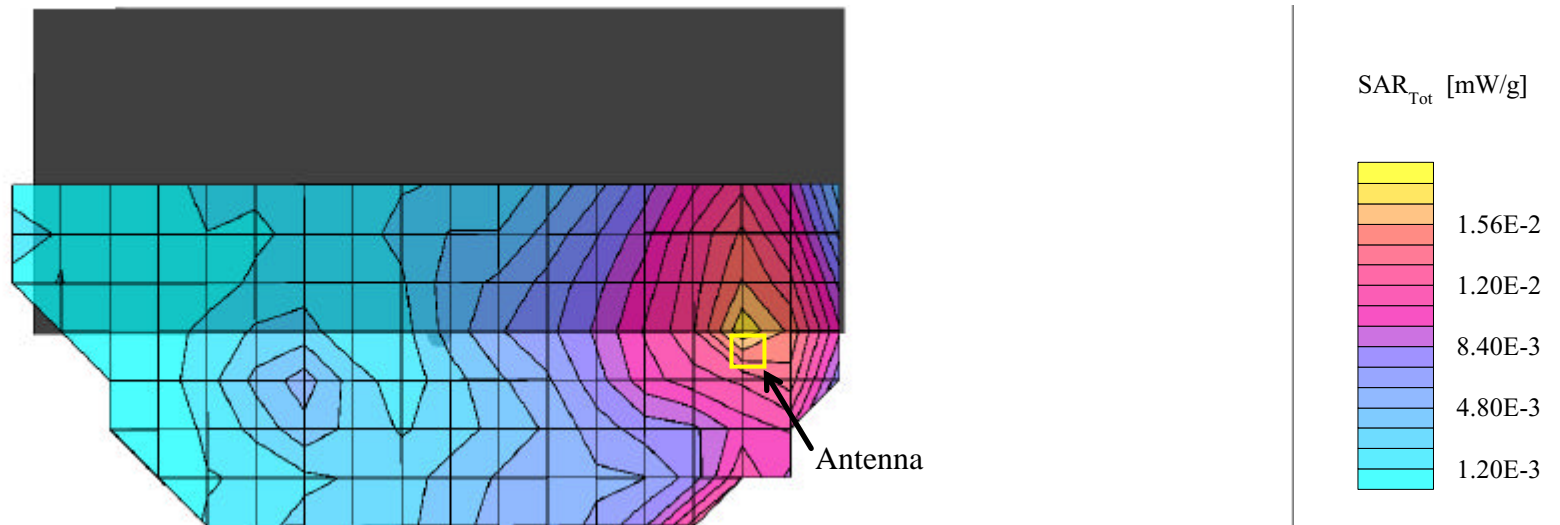
Single Transmit - Cellular CDMA only

Channel 363 [835.89 MHz]

Conducted Power: 23.0 dBm

Ambient Temp: 22.2°C; Fluid Temp: 22.0°C

Date Tested: November 01, 2002

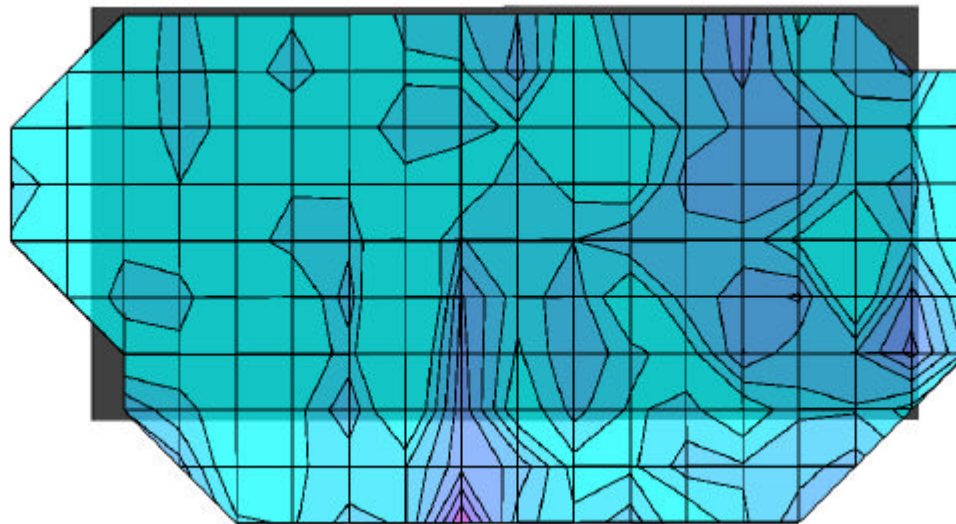


Itronix Corporation FCC ID: KBCIX260AC555-MPI

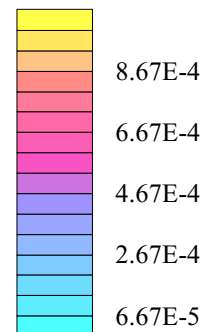
SAM Phantom; Flat Section; Position: (0°,0°)
Probe: ET3DV6 - SN1387; ConvF(6.30,6.30,6.30); Crest factor: 1.0
835 MHz Muscle: $\sigma = 0.96$ mho/m $\epsilon_r = 53.3$ $\rho = 1.00$ g/cm³
Coarse: Dx = 15.0, Dy = 15.0, Dz = 10.0

Body SAR - Bottom of Laptop PC (LCD Display Closed) - Antenna Perpendicular to Planar Phantom (Extended Position)
0.0 cm Separation Distance from Bottom of Laptop PC to Planar Phantom
Itronix IX260 Rugged Laptop PC
with Sierra Wireless AirCard 555 PCS/Cellular CDMA Modem Card
Co-located with Cisco MPI-350 Mini-PCI DSSS WLAN Card
Cellular CDMA Mode
Single Transmit - Cellular CDMA only
Channel 363 [835.89 MHz]
Conducted Power: 23.0 dBm
Ambient Temp: 22.2°C; Fluid Temp: 22.0°C
Date Tested: November 01, 2002

Coarse scan to show Left Half of Bottom Side



SAR_{Tot} [mW/g]



Itronix Corporation FCC ID: KBCIX260AC555-MPI

SAM Phantom; Flat Section; Position: (0°,0°)

Probe: ET3DV6 - SN1387; ConvF(6.30,6.30,6.30); Crest factor: 1.0

835 MHz Muscle: $\sigma = 0.96$ mho/m $\epsilon_r = 53.3$ $\rho = 1.00$ g/cm³

Coarse: Dx = 15.0, Dy = 15.0, Dz = 10.0

Cube 5x5x7; Powerdrift: -0.20 dB

SAR (1g): 0.0197 mW/g, SAR (10g): 0.0123 mW/g

Body SAR - Bottom of Laptop PC (LCD Display Closed) - Antenna Perpendicular to Planar Phantom (Extended Position)

0.0 cm Separation Distance from Bottom of Laptop PC to Planar Phantom

Itronix IX260 Rugged Laptop PC

with Sierra Wireless AirCard 555 PCS/Cellular CDMA Modem Card

Co-located with Cisco MPI-350 Mini-PCI DSSS WLAN Card

Cellular CDMA Mode

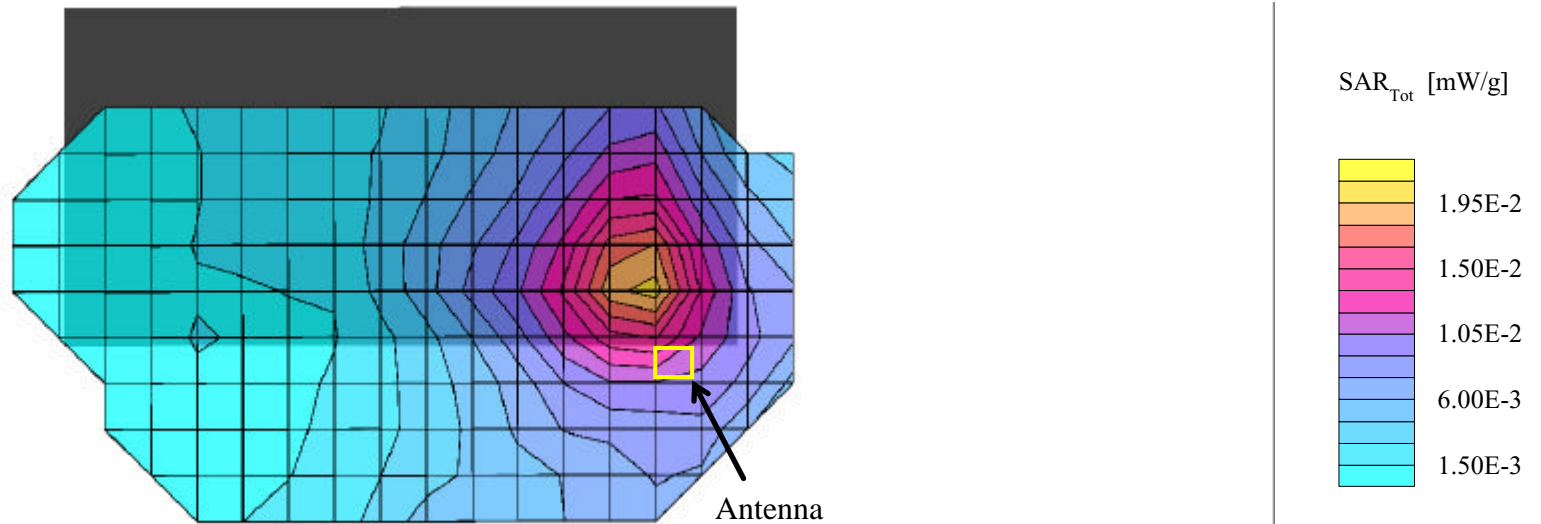
Simultaneous Transmit with co-located DSSS WLAN Card

Channel 363 [835.89 MHz]

Conducted Power: 23.0 dBm

Ambient Temp: 22.2°C; Fluid Temp: 22.0°C

Date Tested: November 01, 2002

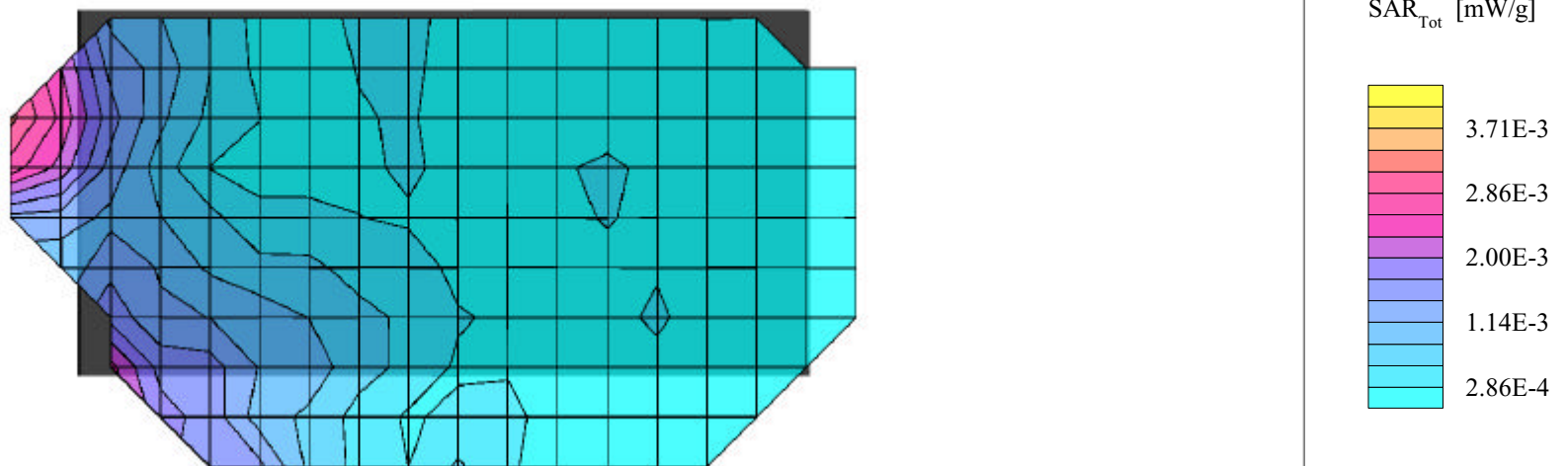


Itronix Corporation FCC ID: KBCIX260AC555-MPI

SAM Phantom; Flat Section; Position: (0°,0°)
 Probe: ET3DV6 - SN1387; ConvF(6.30,6.30,6.30); Crest factor: 1.0
 835 MHz Muscle: $\sigma = 0.96$ mho/m $\epsilon_r = 53.3$ $\rho = 1.00$ g/cm³
 Coarse: Dx = 15.0, Dy = 15.0, Dz = 10.0

Body SAR - Bottom of Laptop PC (LCD Display Closed) - Antenna Perpendicular to Planar Phantom (Extended Position)
 0.0 cm Separation Distance from Bottom of Laptop PC to Planar Phantom
 Itronix IX260 Rugged Laptop PC
 with Sierra Wireless AirCard 555 PCS/Cellular CDMA Modem Card
 Co-located with Cisco MPI-350 Mini-PCI DSSS WLAN Card
 Cellular CDMA Mode
Simultaneous Transmit with co-located DSSS WLAN Card
 Channel 363 [835.89 MHz]
 Conducted Power: 23.0 dBm
 Ambient Temp: 22.2°C; Fluid Temp: 22.0°C
 Date Tested: November 01, 2002

Coarse scan to show Left Half of Bottom Side



Itronix Corporation FCC ID: KBCIX260AC555-MPI

SAM Phantom; Flat Section; Position: (0°,0°)

Probe: ET3DV6 - SN1387; ConvF(6.30,6.30,6.30); Crest factor: 1.0

835 MHz Muscle: $\sigma = 0.96$ mho/m $\epsilon_r = 53.3$ $\rho = 1.00$ g/cm³

Coarse: Dx = 15.0, Dy = 15.0, Dz = 10.0

Cube 5x5x7; Powerdrift: -0.13 dB

SAR (1g): 0.231 mW/g, SAR (10g): 0.151 mW/g

Body SAR - Right Side of LCD Display (Closed) - Antenna Parallel to Planar Phantom (Extended Position)

1.5 cm Separation Distance from Antenna to Planar Phantom

Itronix IX260 Rugged Laptop PC

with Sierra Wireless AirCard 555 PCS/Cellular CDMA Modem Card

Co-located with Cisco MPI-350 Mini-PCI DSSS WLAN Card

Cellular CDMA Mode

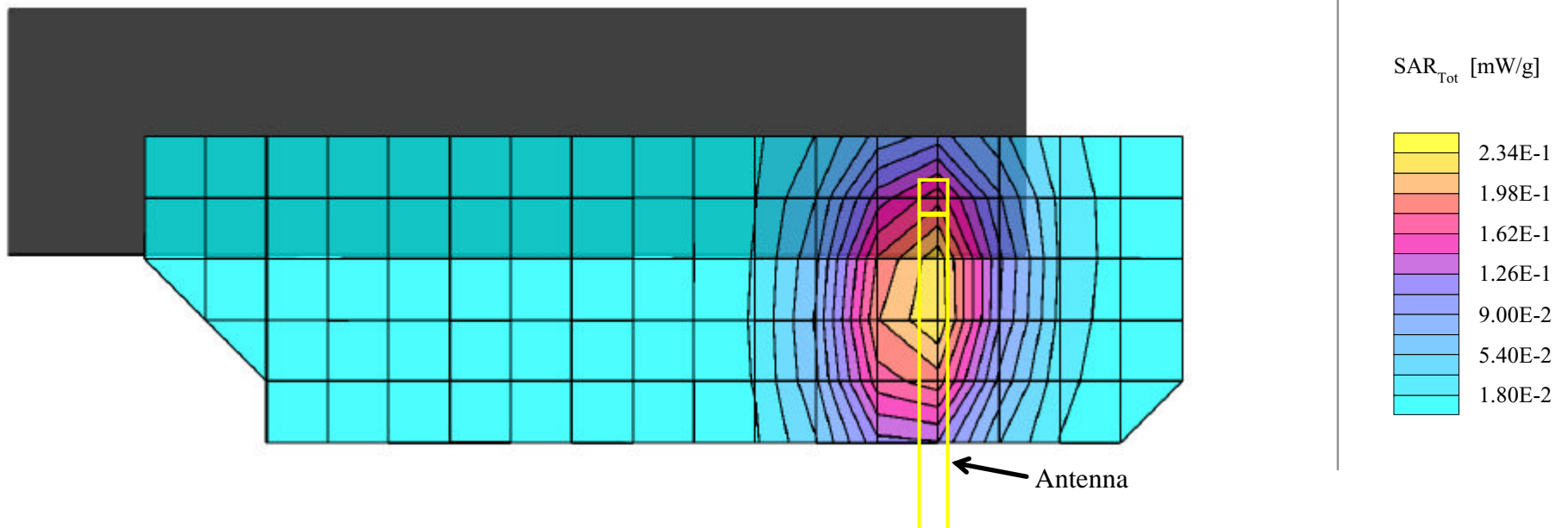
Single Transmit - Cellular CDMA only

Channel 363 [835.89 MHz]

Conducted Power: 23.0 dBm

Ambient Temp: 22.2°C; Fluid Temp: 22.0°C

Date Tested: November 01, 2002



Itronix Corporation FCC ID: KBCIX260AC555-MPI

SAM Phantom; Flat Section; Position: (0°,0°)

Probe: ET3DV6 - SN1387; ConvF(6.30,6.30,6.30); Crest factor: 1.0

835 MHz Muscle: $\sigma = 0.96$ mho/m $\epsilon_r = 53.3$ $\rho = 1.00$ g/cm³

Coarse: Dx = 15.0, Dy = 15.0, Dz = 10.0

Cube 5x5x7; Powerdrift: -0.12 dB

SAR (1g): 0.207 mW/g, SAR (10g): 0.135 mW/g

Body SAR - Right Side of LCD Display (Closed) - Antenna Parallel to Planar Phantom (Extended Position)

1.5 cm Separation Distance from Antenna to Planar Phantom

Itronix IX260 Rugged Laptop PC

with Sierra Wireless AirCard 555 PCS/Cellular CDMA Modem Card

Co-located with Cisco MPI-350 Mini-PCI DSSS WLAN Card

Cellular CDMA Mode

Simultaneous Transmit with co-located DSSS WLAN Card

Channel 363 [835.89 MHz]

Conducted Power: 23.0 dBm

Ambient Temp: 22.2°C; Fluid Temp: 22.0°C

Date Tested: November 01, 2002

